

**Inspection Photos**  
**Location: QB ENERGY Story Gulch Unit/8506D-25 F25496**  
**Location ID: 415182**  
**Date: 11/14/2024**



Photo # 9203 Entrance to location

Photo # 9226 Location

## Inspection Photos

Location: QB ENERGY Story Gulch Unit/8506D-25 F25496

Location ID: 415182

Date: 11/14/2024

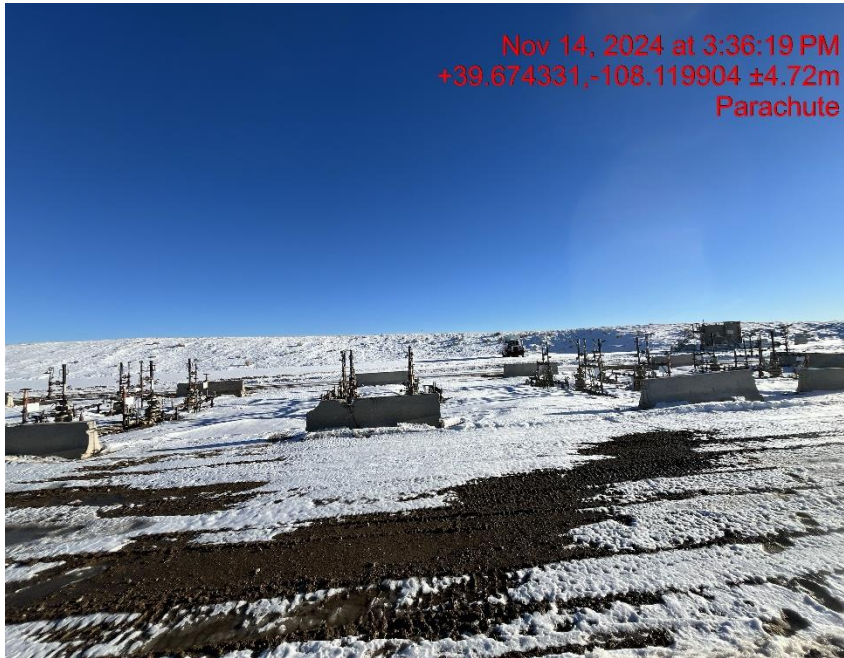


Photo # 9204 Location



Photo # 9205 Location



## Inspection Photos

Location: QB ENERGY Story Gulch Unit/8506D-25 F25496

Location ID: 415182

Date: 11/14/2024



Photo # 9215 Location



Photo # 9217 Location

## Inspection Photos

Location: QB ENERGY Story Gulch Unit/8506D-25 F25496

Location ID: 415182

Date: 11/14/2024



Nov 14, 2024 at 3:49:33 PM  
+39.674614,-108.119545 ±4.73m  
Parachute

Photo # 9218 Location



Nov 14, 2024 at 4:04:34 PM  
+39.673950,-108.120283 ±4.73m  
Parachute

Photo # 9234 Location



## Inspection Photos

Location: QB ENERGY Story Gulch Unit/8506D-25 F25496

Location ID: 415182

Date: 11/14/2024



Photo # 9219 Location

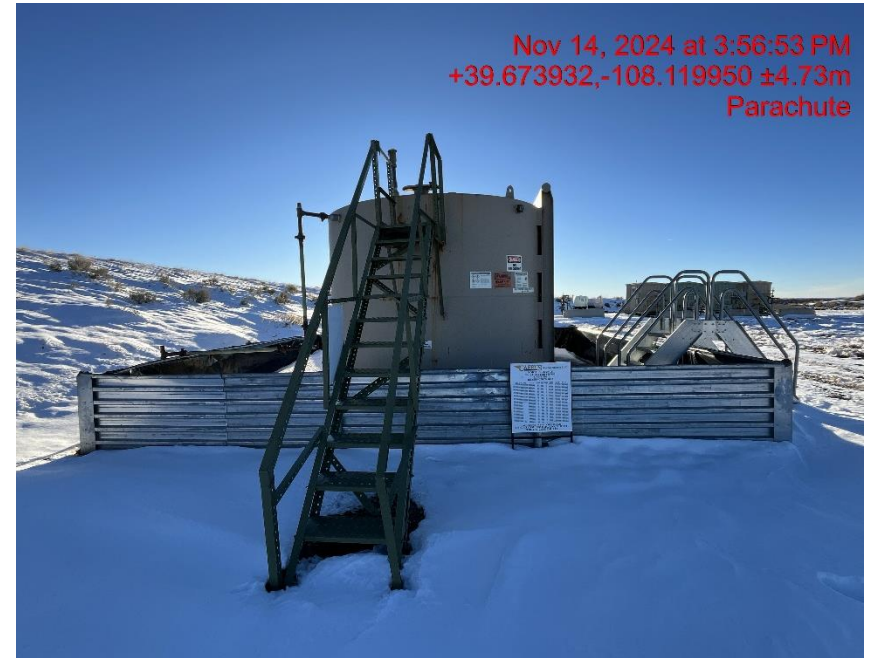


Photo # 9224 Location



## Inspection Photos

Location: QB ENERGY Story Gulch Unit/8506D-25 F25496

Location ID: 415182

Date: 11/14/2024



Photo # 9245 NE corner of location



Photo # 9246 SE corner of location



## Inspection Photos

Location: QB ENERGY Story Gulch Unit/8506D-25 F25496

Location ID: 415182

Date: 11/14/2024



Photo # 9248 SW corner of location



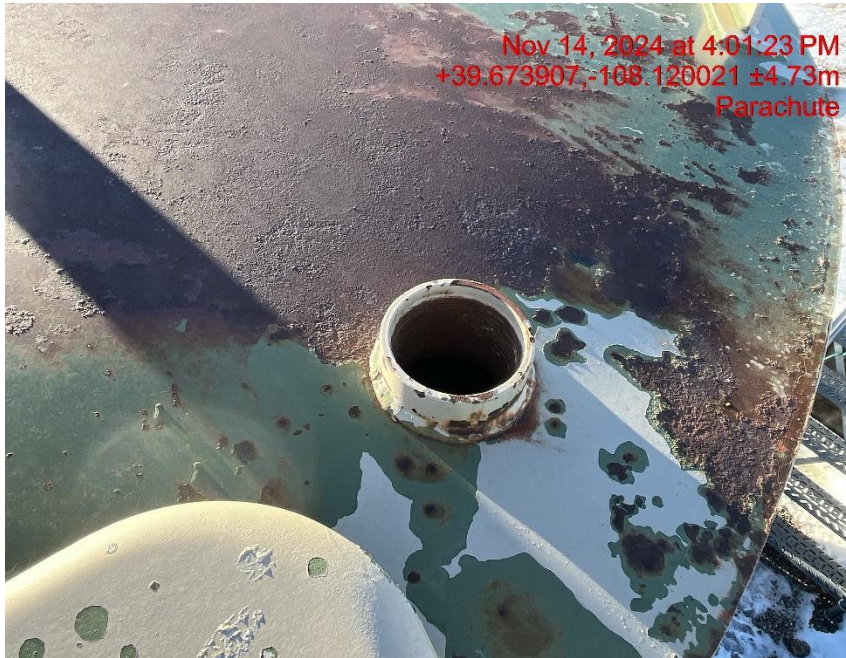
Photo # 9249 NW corner of location

## Inspection Photos

Location: QB ENERGY Story Gulch Unit/8506D-25 F25496

Location ID: 415182

Date: 11/14/2024



**Photo # 9230 Tank port open ended/wildlife hazard  
available for entry by wildlife**



**Photo # 9233 Open ended load line**



## Inspection Photos

Location: QB ENERGY Story Gulch Unit/8506D-25 F25496

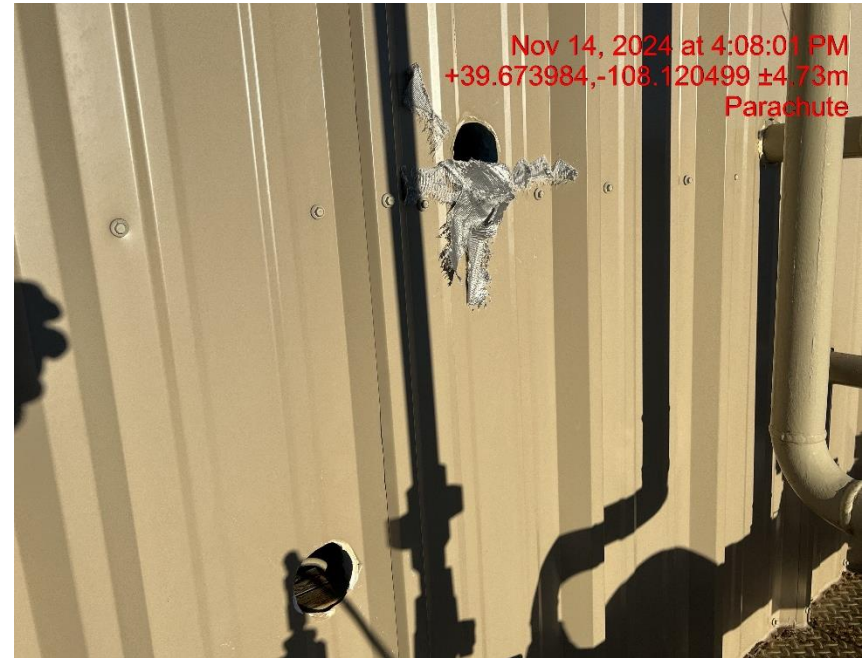
Location ID: 415182

Date: 11/14/2024



Nov 14, 2024 at 4:07:43 PM  
+39.673984,-108.120499 ±4.73m  
Parachute

**Photo # 9236 Open holes on gas meter building/wildlife hazard available for entry by wildlife**



Nov 14, 2024 at 4:08:01 PM  
+39.673984,-108.120499 ±4.73m  
Parachute

**Photo # 9237 Open holes on gas meter building/wildlife hazard available for entry by wildlife**