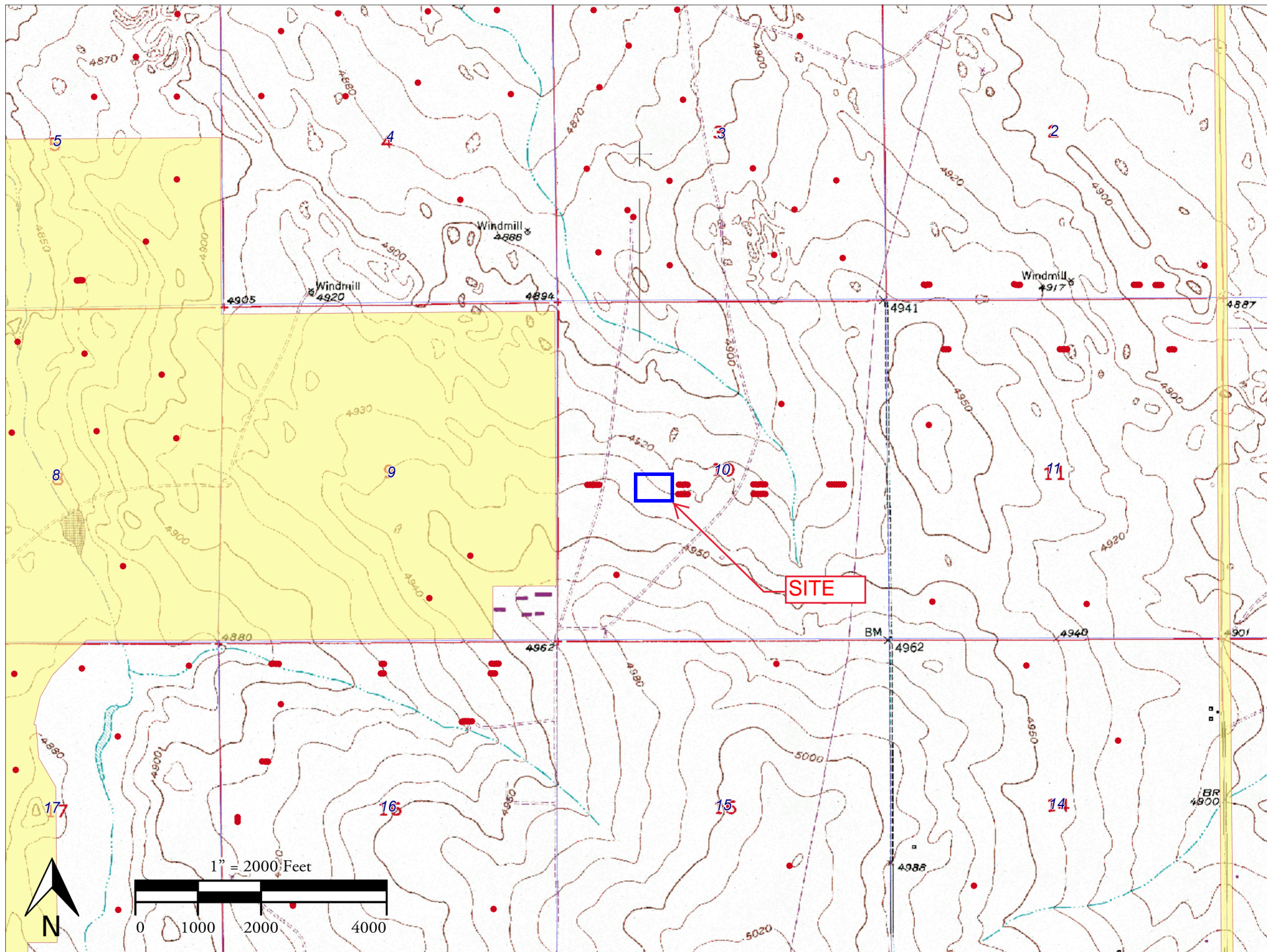


TABLE 2
SUMMARY OF VOLATILE ORGANIC SOIL CHEMISTRY DATA
NOBLE 100322
OSCAR SEPARATOR, WELD COUNTY, COLORADO
REM #

Sample ID	Sample Date	Depth (ft)	Benzene (mg/kg)	Toluene (mg/kg)	Ethyl-Benzene (mg/kg)	Xylenes (mg/kg)	1,2,4-Trimethyl-Benzene (mg/kg)	1,3,5-Trimethyl-Benzene (mg/kg)	Naphthalene (mg/kg)	TPH (mg/kg)	TPH GRO (mg/kg)	TPH DRO (mg/kg)	TPH ORO (mg/kg)
ECMC Table 915-1 Limits (Residential SSL)			1.2	490	5.8	58	30	27	2	500	500**		
ECMC Table 915-1 Limits (Protection of Groundwater SSL)			0.0026	0.69	0.78	9.9	0.0081	0.0087	0.0038	500	500**		
Waste Char	11/18/2024	0.2	pending	pending	pending	pending	pending	pending	pending	pending	pending	pending	pending

1. Bold values exceed the ECMC Table 915-1 limit(s)
 2. Red & blue highlighted soil analytical values indicate an exceedance of the referenced soil screening level (SSL)
 3. * Indicates laboratory minimum detection limit in excess of SSL
 4. ** Summation of GRO+DRO+ORO must be less than 500 mg/kg
- NA - Not analyzed
- = Source material characterization sample, excavated and transported off site for disposal.
- = Material excavated and transported off site for disposal.

OSCAR FACILITY



An aerial photograph of an industrial facility, possibly a refinery or chemical plant, situated in a desert environment. The facility consists of numerous interconnected pipes, walkways, and storage tanks. A red outline highlights a specific area in the center of the image, and a yellow dot is placed within this area. Two red arrows point from text labels to the highlighted area. The number '10250' is visible on a vertical pipe structure on the right side of the image.

Impacted surface soil

10250

Release Point - Kimray valve



Description:

#1 - Oscar Facility



Description:

#2 - Kimray valve failed in the bottom

Photo Log



Description:

#3 - Bottom of Kimray valve with washout shown

Photo Log



Description:

#4 - Looking east at impacted surface area

Photo Log



Description:

#5 - Looking east at impacted soil on south side of separator. Note Kimray valve on left side of photo.

Photo Log



Description:

#6 - Looking east at north side of separator

Photo Log



Description:

#7 - Looking northeast at separator skid. The southwest corner was the most impacted area with elevated PID concentrations to 1.5 ft.

Photo Log



Description:

#8 - Looking west at north side of separator skid.