

Taproot – Big Mountain Viper Pad – Produced Water Release

Photo: 1

Description:

Initial site conditions on 9/5 looking east.



Photo: 2

Description:

Initial site conditions looking southwest.



Taproot – Big Mountain Viper Pad – Produced Water Release

Photo: 3

Description:

Initial site conditions looking south.



Photo: 4

Description:

Release location.



Taproot – Big Mountain Viper Pad – Produced Water Release

Photo: 5

Description:

The outlined impacted area of the adjacent property to the southwest.



Photo: 6

Description:

Liquid Vac Truck Operator working to remove free liquids.



Taproot – Big Mountain Viper Pad – Produced Water Release

Photo: 7

Description:

Hydro excavator working in the primary excavation area to locate the pipeline failure.



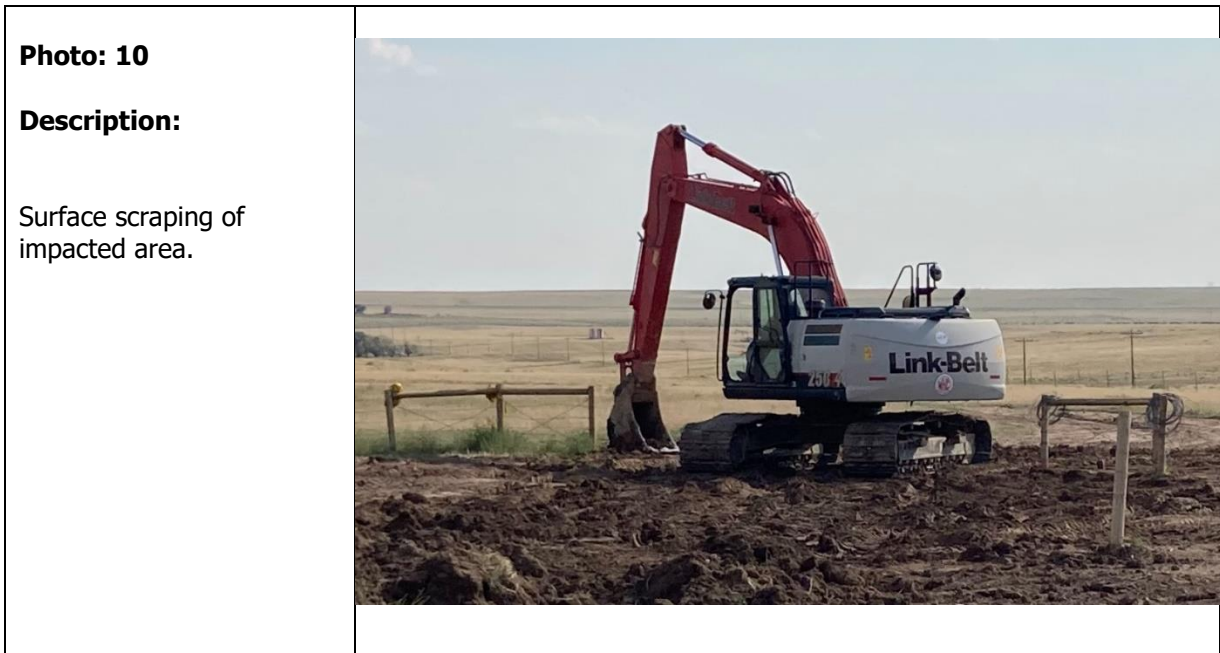
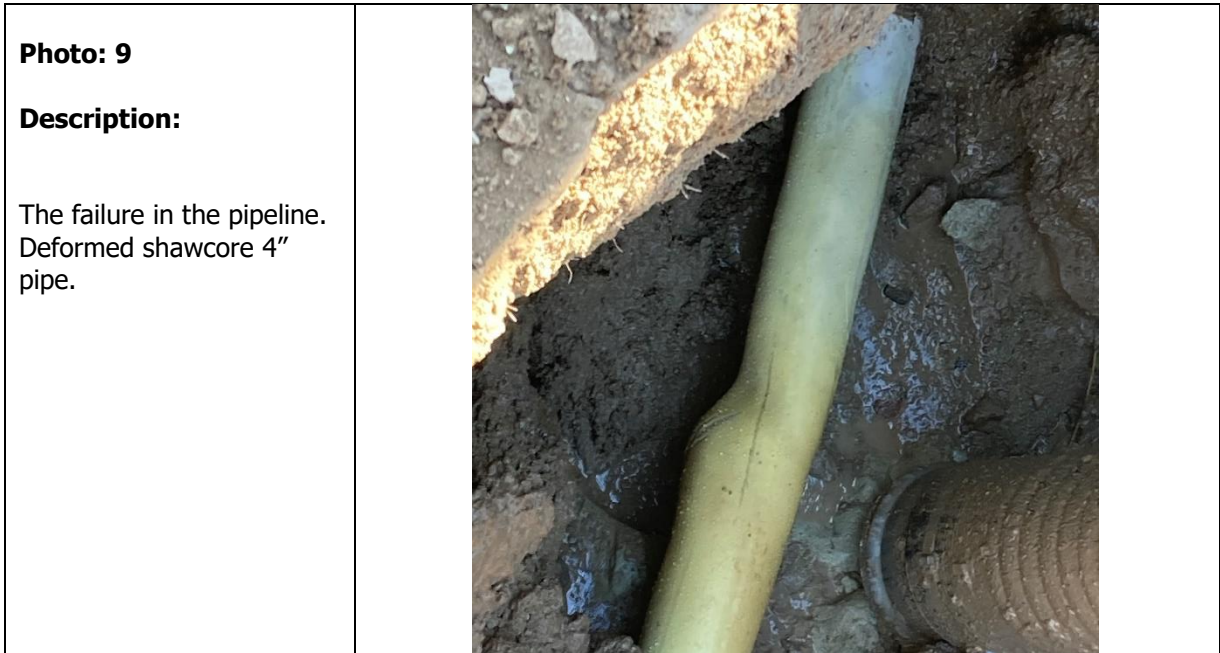
Photo: 8

Description:

Locating the failure in the pipeline.



Taproot – Big Mountain Viper Pad – Produced Water Release



Taproot – Big Mountain Viper Pad – Produced Water Release

Photo: 11

Description:

Surface scrapping of impacted area to remove visible wet soil.



Photo: 12

Description:

Loading impacted soil for disposal.



Taproot – Big Mountain Viper Pad – Produced Water Release

Photo: 13

Description:

Primary excavation area after exposing failed pipeline. View looking north.



Photo: 14

Description:

Secondary excavation area after surface scrape looking west.



Taproot – Big Mountain Viper Pad – Produced Water Release

Photo: 15

Description:

Secondary excavation area after surface scrape, looking east.



Photo: 16

Description:

Secondary excavation area after surface scrape looking north.



Taproot – Big Mountain Viper Pad – Produced Water Release

Photo: 17

Description:

Adjacent property after surface scrape.



Photo: 18

Description:

Replaced line with stainless steel pipe. View looking north.

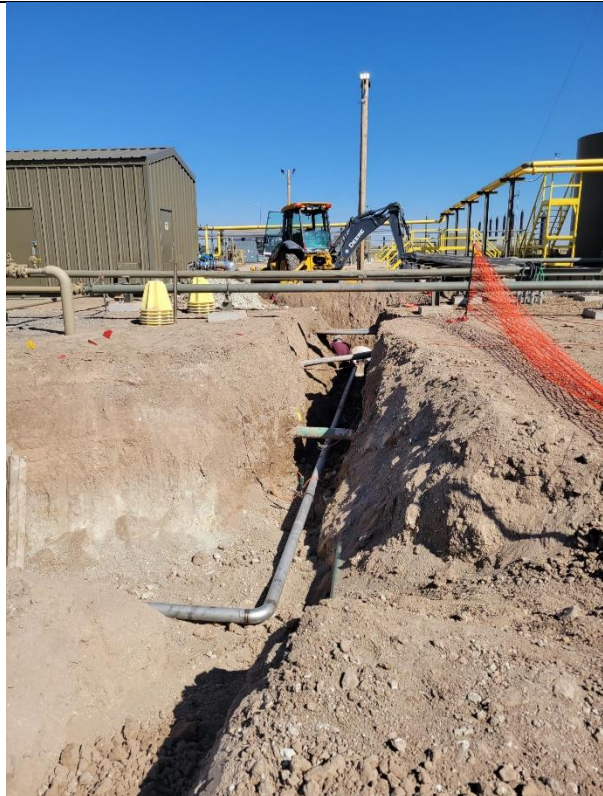


Photo: 19

Description:

Area of surface impacts to the east of the primary excavation. Hand digging and hydroexcavation performed until no observed impacts. View looking north.



Taproot – Big Mountain Viper Pad – Produced Water Release

Photo: 20

Description:

Widening of primary excavation completed on 11/10/22 and 11/11/22. Secondary sidewall samples collected.



Photo: 21

Description:

Widening of primary excavation completed on 11/10/22 and 11/11/22. Existing infrastructure hindering further excavation.



Taproot – Big Mountain Viper Pad – Produced Water Release

Photo: 22

Description:

Current site conditions August 2024, with locate flags and proposed soil boring location stakes.



Photo: 23

Description:

EWI's Direct Push (DPT) rig arriving onsite.



Taproot – Big Mountain Viper Pad – Produced Water Release

Photo: 24

Description:

EWI personnel hand auguring SB7 for spatial delineation of limited inorganic exceedances.



Photo: 25

Description:

EWI's DPT rig preparing to mobilize offsite.



Photo: 26

Description:

Test Well (TW1) bore hole drilled to 50' with 1" PVC well material set. Well was dry after 4 hours. Auger cuttings were dry, fine grained silt and clay. Water or evidence for water within 50' depth was not observed.



Photo: 27

Description:

Surface water located southeast of the Site from a temporary flooded water regime in a notable drainage located ~80' lower in elevation from the release location. The water table is typically located much lower than the surface in temporarily flooded water regimes.

