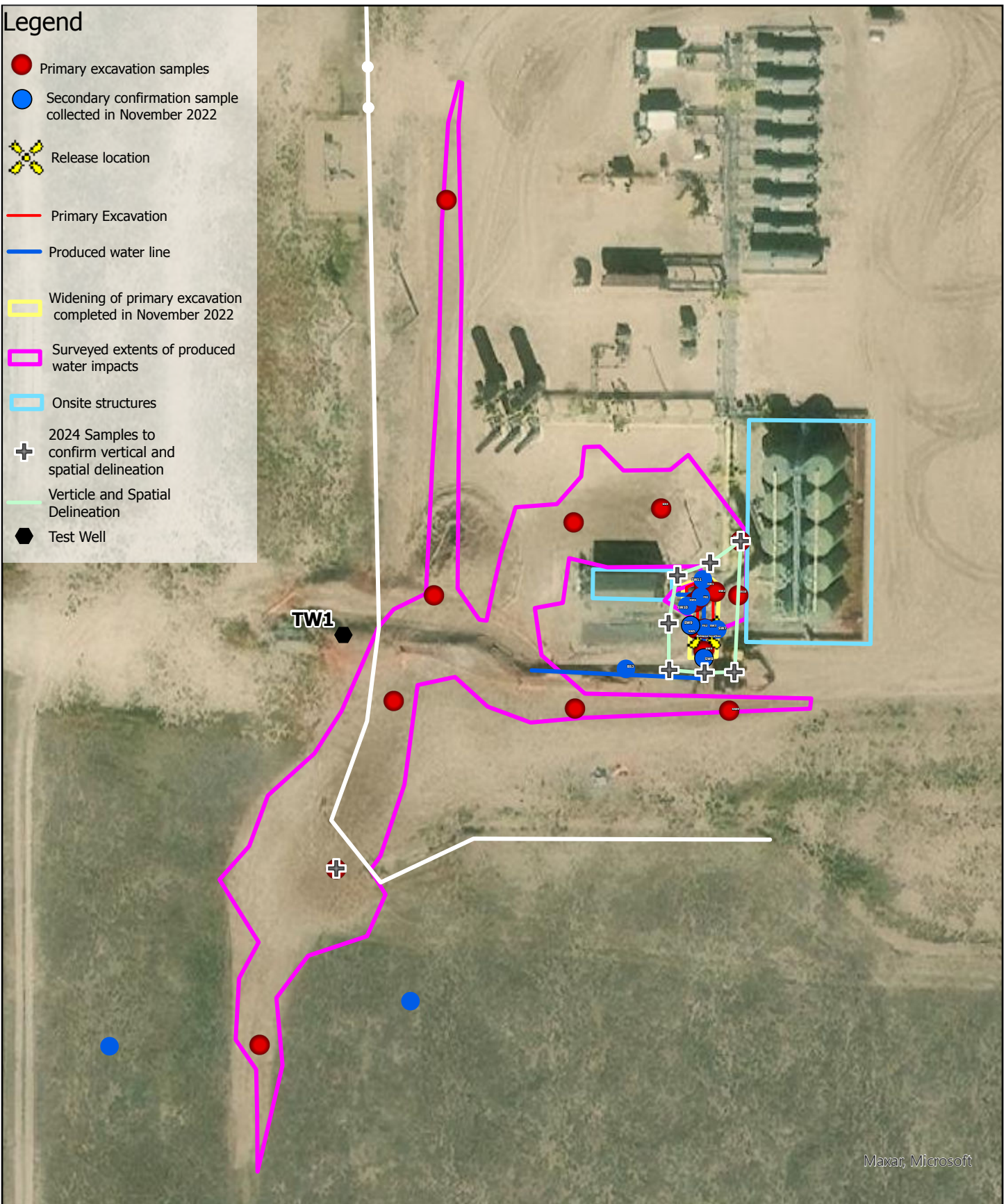


Legend

- Primary excavation samples
- Secondary confirmation sample collected in November 2022
- Release location
- Primary Excavation
- Produced water line
- Widening of primary excavation completed in November 2022
- Surveyed extents of produced water impacts
- Onsite structures
- + 2024 Samples to confirm vertical and spatial delineation
- Vertical and Spatial Delineation
- Test Well



Maxar, Microsoft

Checked By: A. Kubat		Scale 0 55 110 Feet	 ENVIRONMENTAL WORKS Denver Metro Office Location 2770 Industrial Lane Broomfield, CO 80020	Site Layout Big Mountain Viper Spill/Release Point ID 482854 Near Briggsdale, Colorado	Figure 1.0
EWI #222791 Drawn By: KEF 10/1/2024					