



Equipment ID: FLOWLINES		Equipment Type:		Equipment ID:		Equipment Type:	
Material:	Volume:	Contents:		Material:	Volume:	Contents:	
Notes/Conditions: FACING S.8				Notes/Conditions:			



Equipment ID: FL01-01 @4'		Equipment Type:		Equipment ID: FL01-01WEST@3?		Equipment Type:	
Material:	Volume:	Contents:		Material:	Volume:	Contents:	
Notes/Conditions: FACING W.				Notes/Conditions: FACING W.			



Equipment ID: FL01-02@3'		Equipment Type:		Equipment ID: FL01-03@3'		Equipment Type:	
Material:	Volume:	Contents:		Material:	Volume:	Contents:	
Notes/Conditions: FACING W.				Notes/Conditions: FACING W.			



Equipment ID: FL01-04@3'		Equipment Type:		Equipment ID: FL01-05@3'		Equipment Type:	
Material:	Volume:	Contents:		Material:	Volume:	Contents:	
Notes/Conditions: FACING W. TRASH PRESENT IN EXCAVATION. POSSIBLE PERSONAL DUMP?				Notes/Conditions: FACING W.			



Equipment ID: FL01-06@3'		Equipment Type:		Equipment ID: FL01-07@3'		Equipment Type:	
Material:	Volume:	Contents:		Material:	Volume:	Contents:	
Notes/Conditions: FACING W.				Notes/Conditions: FACNG W.			




Equipment ID: FLOWLINES			Equipment Type:			Equipment ID:			Equipment Type:		
Material:		Volume:		Contents:		Material:		Volume:		Contents:	
Notes/Conditions: FACING S.8						Notes/Conditions:					



Equipment ID: FL01-01 @4'		Equipment Type:	
Material:	Volume:	Contents:	
Notes/Conditions: FACING W.			

Equipment ID: FL01-01WEST@3?		Equipment Type:	
Material:	Volume:	Contents:	
Notes/Conditions: FACING W.			

					
Equipment ID: FL01-02@3'		Equipment Type:	Equipment ID: FL01-03@3'		Equipment Type:
Material:	Volume:	Contents:	Material:	Volume:	Contents:
Notes/Conditions: FACING W.			Notes/Conditions: FACING W.		



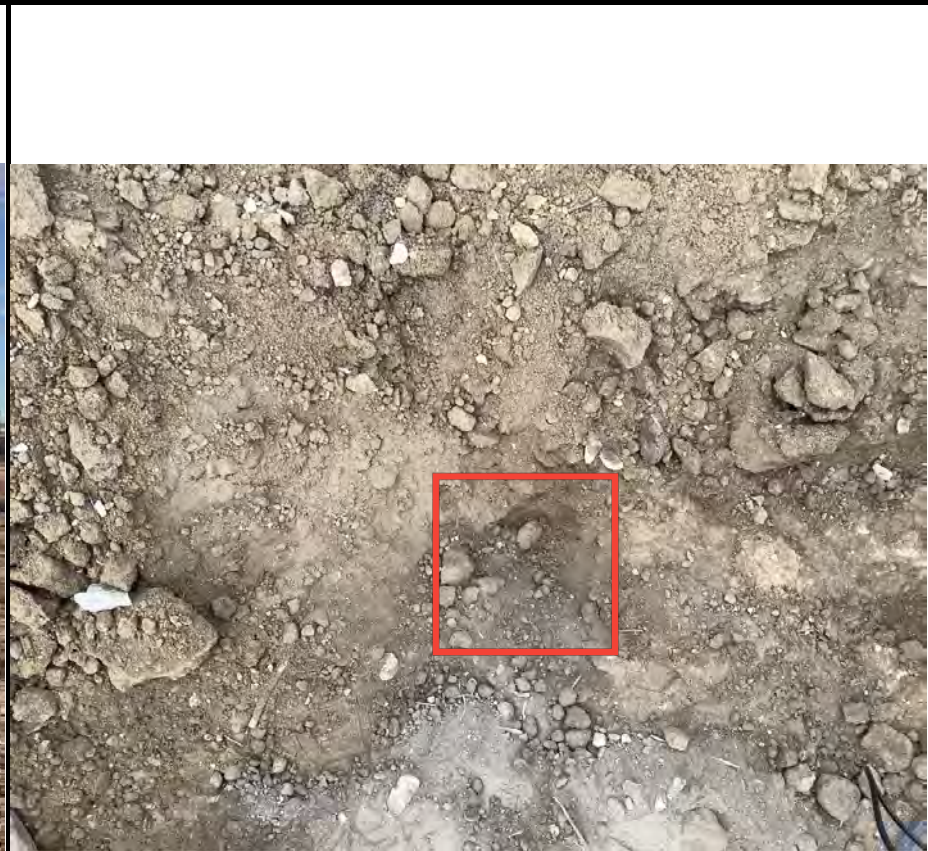
Equipment ID: FL01-04@3'		Equipment Type:		Equipment ID: FL01-05@3'		Equipment Type:	
Material:	Volume:	Contents:		Material:	Volume:	Contents:	
Notes/Conditions: FACING W. TRASH PRESENT IN EXCAVATION. POSSIBLE PERSONAL DUMP?				Notes/Conditions: FACING W.			



Equipment ID: FL01-06@3'		Equipment Type:		Equipment ID: FL01-07@3'		Equipment Type:	
Material:	Volume:	Contents:		Material:	Volume:	Contents:	
Notes/Conditions: FACING W.				Notes/Conditions: FACNG W.			



SITE NAME: SH Farms C17-19							DATE: 10/24/2024	REM. PROJECT #: 34145	WEATHER: Sunny, 40s	
SITE DIRECTIONS: CR 46//51 S. 1mi, E into site							CLIENT: Noble			
LEGALS AND LAT/LONG: 40.31542363, -104.5794432							TASMAN PERSONNEL: MW, CK			
SOIL TYPES: Well Graded Sand - SW							SURFACE GRADIENT: North			
SOIL SAMPLING							FACILITY INFRASTRUCTURE			
Date/Time	Soil Sample ID	PID (ppm)	Visual	Olfactory	Photo?	Grab or Lab Sample?	EQUIPMENT	Quantity	Photo?	
10-24-2024 10:30	FL01R-W@3'	0.1	No Staining	No Odor	Yes	Lab	Above Ground Storage Tank (AST)			
10-24-2024 10:36	FL01-01@4'	0.0	No Staining	No Odor	Yes	Grab	Buried or Partially Buried Vessel			
10-24-2024 10:49	FL01-02@3'	0.2	No Staining	No Odor	Yes	Grab	Separator			
10-24-2024 10:58	FL01-03@3'	0.1	No Staining	No Odor	Yes	Grab	Emission Control Device (ECD)			
10-24-2024 10:58	FL01-03@3'	0.1	No Staining	No Odor	Yes	Grab	Dump Line			
10-24-2024 11:06	FL01-04@3'	0.0	No Staining	No Odor	Yes	Lab	Wellhead			
10-24-2024 11:11	FL01-05@3'	0.1	No Staining	No Odor	Yes	Grab	Flowline	1	<input checked="" type="checkbox"/>	
10-24-2024 12:23	FL01-06@3'	0.1	No Staining	No Odor	Yes	Lab	Other:			
10-24-2024 12:28	FL01-07@3'	0.2	No Staining	No Odor	Yes	Lab	Soil Loads Removed			
10-24-2024 13:28	BKG01@0-6"	0.0	No Staining	No Odor	Yes	Lab	IMPACTED SOIL IDENTIFIED?			
10-24-2024 13:29	BKG01@3'	0.1	No Staining	No Odor	Yes	Lab	ESTIMATED VOLUME OF IMPACTS:			
10-24-2024 13:30	BKG01@4'	0.1	No Staining	No Odor	Yes	Lab	Date	Number	CY	
							Total Removed	0	0	
							Disposal Facility:			
							Groundwater Recovery			
							DATE GW ENCOUNTERED:	DEPTH:		
							GROUNDWATER IN CONTACT WITH IMPACTED SOIL?			
							LNAPL OR SHEEN OBSERVED ON GW?			
GROUNDWATER SAMPLING							Date	BBLs		
Date/Time	Groundwater Sample ID	Depth Collected	Turbid?	Sheen?	Odor?	Photo?				
							Total Removed	0		
							Disposal Facility:			



Equipment ID: FLOWLINES		Equipment Type:	
Material:	Volume:	Contents:	
Notes/Conditions: FACING S.8			

Equipment ID: FL01R-W@3'		Equipment Type:	
Material:	Volume:	Contents:	
Notes/Conditions: FACING W.			



Equipment ID: FL01-01 @ 4'		Equipment Type:		Equipment ID:		Equipment Type:	
Material:	Volume:	Contents:		Material:	Volume:	Contents:	
Notes/Conditions: FACING W.				Notes/Conditions:			



Equipment ID: FL01-02@3'		Equipment Type:	
Material:	Volume:	Contents:	
Notes/Conditions: FACING W.			

Equipment ID: FL01-03@3'		Equipment Type:	
Material:	Volume:	Contents:	
Notes/Conditions: FACING W.			

					
Material:	Volume:	Contents:	Material:	Volume:	Contents:
Notes/Conditions: FACING W. TRASH PRESENT IN EXCAVATION. POSSIBLE TRASH DUMP?			Notes/Conditions: FACING W.		

						
						Equipment ID: FL01-06@3' Equipment Type:
Material:		Volume:	Contents:		Notes/Conditions: FACNG W.	
Equipment ID: FL01-07@3' Equipment Type:			Material:		Volume:	Contents:
Notes/Conditions: FACING W.			Notes/Conditions: FACING W.			



Equipment ID: BKG01@0-6", 3', 4'		Equipment Type:		Equipment ID:		Equipment Type:	
Material:	Volume:	Contents:		Material:	Volume:	Contents:	
Notes/Conditions: FACING W.				Notes/Conditions:			



SITE NAME: SH Farms C17-03, 06, 19							DATE: 11/12/2024	REM. PROJECT #:	WEATHER: Sunny, 30s
SITE DIRECTIONS: CR 44//51 0.6mi N. , E. into site							CLIENT: Noble		
LEGALS AND LAT/LONG: 40.31441479, -104.5820272							TASMAN PERSONNEL: MW, CK		
SOIL TYPES: Well Graded Sand - SW							SURFACE GRADIENT: North		
SOIL SAMPLING							FACILITY INFRASTRUCTURE		
Date/Time	Soil Sample ID	PID (ppm)	Visual	Olfactory	Photo?	Grab or Lab Sample?	EQUIPMENT	Quantity	Photo?
							Above Ground Storage Tank (AST)		
11-12-2024 12:07	FL01-08@3'	0.0	No Staining	No Odor	Yes	Grab	Buried or Partially Buried Vessel		
11-12-2024 12:27	FL01-09@3'	0.0	No Staining	No Odor	Yes	Grab	Separator		
							Emission Control Device (ECD)		
							Dump Line		
							Wellhead		
							Flowline		
							Other:		
							Soil Loads Removed		
							IMPACTED SOIL IDENTIFIED?		
							ESTIMATED VOLUME OF IMPACTS:		
							Date	Number	CY
							Total Removed	0	0
							Disposal Facility:		
							Groundwater Recovery		
							DATE GW ENCOUNTERED:	DEPTH:	
							GROUNDWATER IN CONTACT WITH IMPACTED SOIL?		
							LNAPL OR SHEEN OBSERVED ON GW?		
GROUNDWATER SAMPLING							Date	BBLs	
Date/Time	Groundwater Sample ID	Depth Collected	Turbid?	Sheen?	Odor?	Photo?			
							Total Removed	0	
							Disposal Facility:		



Equipment ID: FL01-08 @3'		Equipment Type:		Equipment ID: FL01-09 @3'		Equipment Type:	
Material:	Volume:	Contents:		Material:	Volume:	Contents:	
Notes/Conditions: Facing E.				Notes/Conditions: FACING S.			

TABLE 1
FIELD DATA SUMMARY TABLE
NOBLE ENERGY, INC. - 100322
SH FARMS C17-03, C17-06 & C17-19 FLOWLINES, WELD COUNTY, COLORADO
REM #s 34145 and 34708

Sample ID	Sample Date	Depth (ft. bgs)	GPS Data Latitude/Longitude		PDOP Value	VOC Concentration (ppm)
FL01-01@3'	10/24/24	3	40.315188	-104.579867	0.8	0.0
FL01-02@3'	10/24/24	3	40.315006	-104.580251	0.9	0.2
FL01-03@3'	10/24/24	3	40.314905	-104.580462	0.9	0.1
FL01-04@3'	10/24/24	3	40.314675	-104.580904	0.9	0.0
FL01-05@3'	10/24/24	3	40.314441	-104.581274	0.8	0.1
FL01-06@3'	10/24/24	3	40.314354	-104.581524	1.1	0.1
FL01-07@3'	10/24/24	3	40.314321	-104.581819	0.8	0.2
FL01R-W@3'	10/24/24	3	40.315426	-104.579455	0.9	0.1
BKG01@0-6"	10/24/24	3	40.314368	-104.582584	1.1	0.0
BKG01@3'	10/24/24	4	40.314368	-104.582584	1.1	0.1
BKG01@4'	10/24/24	3	40.314368	-104.582584	1.1	0.1

Notes:

1. Global Positioning System (GPS) data is provided in decimal degrees using North American Datum (NAD) 83 UTM Zone 13 North.

2. Volatile organic compound (VOC) concentrations are measured in the field using a photoionization detector (PID).

PDOP = Position Dilution of Precision

ppm = Parts per million

in. = Inches

ft. = Feet

bgs = Below ground surface

TABLE 2
SUMMARY OF VOLATILE ORGANIC SOIL CHEMISTRY DATA
NOBLE ENERGY, INC. - 100322
SH FARMS C17-03, C17-06 & C17-19 FLOWLINES, WELD COUNTY, COLORADO
REM #s 34145 and 34708

Sample ID	Sample Date	Depth (ft. bgs)	Benzene (mg/kg)	Toluene (mg/kg)	Ethyl-Benzene (mg/kg)	Xylenes (mg/kg)	1,2,4-Trimethyl-Benzene (mg/kg)	1,3,5-Trimethyl-Benzene (mg/kg)	Naphthalene (mg/kg)	TPH (mg/kg)	TPH GRO (mg/kg)	TPH DRO (mg/kg)	TPH ORO (mg/kg)
ECMC Table 915-1 Limits (Residential SSL)			1.2	490	5.8	58	30	27	2	500	500**		
ECMC Table 915-1 Limits (Protection of Groundwater SSL)			0.0026	0.69	0.78	9.9	0.0081	0.0087	0.0038	500	500**		
SH FARMS C17-03 Flowline													
FL01-04@3'	10/24/24	3	<0.0020	<0.0050	<0.0050	<0.010	<0.0050	<0.0050	<0.0038	<500	<0.50	<50	<50
FL01-06@3'	10/24/24	3	<0.0020	<0.0050	<0.0050	<0.010	<0.0050	<0.0050	0.18	<500	<0.50	<50	<50
FL01-07@3'	10/24/24	3	<0.0020	<0.0050	<0.0050	<0.010	<0.0050	<0.0050	<0.0038	86	<0.50	86	<50
SH FARMS C17-06 Flowline													
FL01-04@3'	10/24/24	3	<0.0020	<0.0050	<0.0050	<0.010	<0.0050	<0.0050	<0.0038	<500	<0.50	<50	<50
FL01-06@3'	10/24/24	3	<0.0020	<0.0050	<0.0050	<0.010	<0.0050	<0.0050	0.0044	<500	<0.50	<50	<50
FL01-07@3'	10/24/24	3	<0.0020	<0.0050	<0.0050	<0.010	<0.0050	<0.0050	<0.0038	<500	<0.50	<50	<50
SH FARMS C17-19 Flowline													
FL01-04@3'	10/24/24	3	<0.0020	<0.0050	<0.0050	<0.010	<0.0050	<0.0050	<0.0038	<500	<0.50	<50	<50
FL01-06@3'	10/24/24	3	<0.0020	<0.0050	<0.0050	<0.010	<0.0050	<0.0050	0.010	<500	<0.50	<50	<50
FL01-07@3'	10/24/24	3	<0.0020	<0.0050	<0.0050	<0.010	<0.0050	<0.0050	<0.0038	<500	<0.50	<50	<50
FL01R-W@3'	10/24/24	3	<0.0020	<0.0050	<0.0050	<0.010	<0.0050	<0.0050	<0.0038	660	<0.50	420	140
Background													
BKG01@0-6"	10/24/24	0-0.5	<0.0020	<0.0050	<0.0050	<0.010	<0.0050	<0.0050	<0.0038	<500	<0.50	<50	<50
BKG01@3'	10/24/24	3	<0.0020	<0.0050	<0.0050	<0.010	<0.0050	<0.0050	<0.0038	<500	<0.50	<50	<50
BKG01@4'	10/24/24	4	<0.0020	<0.0050	<0.0050	<0.010	<0.0050	<0.0050	<0.0038	<500	<0.50	<50	<50

Notes:

- Bold** values exceed the ECMC Table 915-1 limit(s).
- Pink & blue highlighted soil analytical values indicate an exceedance of the referenced soil screening level (SSL).
- * Indicates laboratory minimum detection limit in excess of SSL.
- ** Summation of GRO+DRO+ORO must be less than 500 mg/kg.

ECMC = Energy & Carbon Management Commission

(<) = Analytical result is less than the indicated laboratory reporting limit.

TPH-GRO = Total petroleum hydrocarbons - gasoline range organics

TPH-DRO = Total petroleum hydrocarbons - diesel range organics

TPH-ORO = Total petroleum hydrocarbons - oil range organics

mg/kg = Milligrams per kilogram

ft. = Feet

bgs = Below ground surface

TABLE 3
SUMMARY OF POLYCYCLIC AROMATIC HYDROCARBON SOIL CHEMISTRY DATA
NOBLE ENERGY, INC. - 100322
SH FARMS C17-03, C17-06 & C17-19 FLOWLINES, WELD COUNTY, COLORADO
REM #s 34145 and 34708

Sample ID	Sample Date	Depth (ft. bgs)	Acenaphthene (mg/kg)	Anthracene (mg/kg)	Benzo (a) Anthracene (mg/kg)	Benzo (a) Pyrene (mg/kg)	Benzo (b) Fluoranthene (mg/kg)	Benzo (k) Fluoranthene (mg/kg)	Chrysene (mg/kg)	Dibenzo (a,h) Anthracene (mg/kg)	Fluoranthene (mg/kg)	Fluorene (mg/kg)	Indeno (1,2,3-cd) Pyrene (mg/kg)	Pyrene (mg/kg)	1-Methyl - Naphthalene (mg/kg)	2-Methyl- Naphthalene (mg/kg)
ECMC Table 915-1 Limits (Residential SSL)			360	1,800	1.1	0.11	1.1	11	110	0.11	240	240	1.1	180	18	24
ECMC Table 915-1 Limits (Protection of Groundwater SSL)			0.55	5.8	0.011	0.24	0.3	2.9	9	0.096	8.9	0.54	0.98	1.3	0.006	0.019
SH FARMS C17-03 Flowline																
FL01-04@3'	10/24/24	3	<0.00500	0.00502	0.00784	<0.00500	0.00828	<0.00500	0.00757	<0.00500	0.0210	<0.00500	<0.00500	0.0181	<0.00500	<0.00500
FL01-06@3'	10/24/24	3	0.0407	0.0552	0.0736	0.0472	0.0734	0.0259	0.0701	0.00844	0.203	0.0415	0.0333	0.171	0.00815	0.0184
FL01-07@3'	10/24/24	3	0.0413	0.138	0.419	0.337	0.528	0.170	0.413	0.0396	0.724	0.0500	0.204	0.768	<0.00500	<0.00500
SH FARMS C17-06 Flowline																
FL01-04@3'	10/24/24	3	0.0521	0.0518	0.0790	0.0500	0.0889	0.0337	0.0640	<0.00500	0.209	0.0578	0.103	0.395	<0.00500	0.0112
FL01-06@3'	10/24/24	3	0.0463	0.0621	0.0744	0.0480	0.101	0.0351	0.0648	<0.00500	0.200	0.0528	0.0874	0.339	<0.00500	0.0101
FL01-07@3'	10/24/24	3	0.0351	0.115	0.403	0.305	0.431	0.220	0.413	<0.00500	0.774	0.0405	0.286	0.841	<0.00500	<0.00500
SH FARMS C17-19 Flowline																
FL01-04@3'	10/24/24	3	<0.00500	0.00705	0.00877	0.00709	0.0102	<0.00500	0.00863	<0.00500	0.0259	<0.00500	0.00675	0.0189	<0.00500	<0.00500
FL01-06@3'	10/24/24	3	0.0192	0.0249	0.0292	0.0192	0.0284	0.00971	0.0280	<0.00500	0.0940	0.0196	0.0147	0.0632	<0.00500	<0.00500
FL01-07@3'	10/24/24	3	0.0606	0.145	0.355	0.266	0.383	0.125	0.365	0.0384	0.956	0.0723	0.189	0.709	<0.00500	<0.00500
FL01R-W@3'	10/24/24	3	0.0225	0.100	0.164	0.113	0.157	0.0524	0.157	0.0197	0.479	0.0401	0.0908	0.314	<0.00500	<0.00500
Background																
BKG01@0-6"	10/24/24	0-0.5	<0.00500	<0.00500	<0.00500	<0.00500	<0.00500	<0.00500	<0.00500	<0.00500	<0.00500	<0.00500	<0.00500	<0.00500	<0.00500	<0.00500
BKG01@3'	10/24/24	3	<0.00500	<0.00500	<0.00500	<0.00500	<0.00500	<0.00500	<0.00500	<0.00500	<0.00500	<0.00500	<0.00500	<0.00500	<0.00500	<0.00500
BKG01@4'	10/24/24	4	<0.00500	<0.00500	<0.00500	<0.00500	<0.00500	<0.00500	<0.00500	<0.00500	<0.00500	<0.00500	<0.00500	<0.00500	<0.00500	<0.00500

Notes:

- Bold** values exceed the ECMC Table 915-1 limit(s).
- Pink & blue highlighted soil analytical values indicate an exceedance of the referenced soil screening level (SSL).
- * Indicates laboratory minimum detection limit in excess of SSL.

ECMC = Colorado Energy & Carbon Management Commission

(<) = Analytical result is less than the indicated laboratory reporting limit.

ft. = Feet

bgs = Below ground surface

mg/kg = Milligrams per kilogram

TABLE 4
SUMMARY OF SOIL SUITABILITY FOR RECLAMATION
NOBLE ENERGY, INC. - 100322
SH FARMS C17-03, C17-06 & C17-19 FLOWLINES, WELD COUNTY, COLORADO
REM #s 34145 and 34708

Sample ID	Sample Date	Depth (ft. bgs)	pH (Standard Units)	EC (mmhos/cm)	SAR (Standard Units)	Boron (mg/L)
ECMC Table 915-1 Soil Suitability Limits			6 - 8.3	<4	<6	2
SH FARMS C17-03 Flowline						
FL01-04@3'	10/24/2024	3	7.56	4.25	4.84	<2.00
FL01-06@3'	10/24/2024	3	8.02	1.63	3.81	<2.00
FL01-07@3'	10/24/2024	3	7.92	0.804	1.43	<2.00
SH FARMS C17-06 Flowline						
FL01-04@3'	10/24/2024	3	7.59	3.42	3.51	<2.00
FL01-06@3'	10/24/2024	3	8.27	1.24	3.17	<2.00
FL01-07@3'	10/24/2024	3	8.19	0.833	1.23	<2.00
SH FARMS C17-19 Flowline						
FL01-04@3'	10/24/2024	3	7.76	4.01	4.06	<2.00
FL01-06@3'	10/24/2024	3	8.27	1.83	4.00	<2.00
FL01-07@3'	10/24/2024	3	8.24	0.774	2.06	<2.00
FL01R-W@3'	10/24/2024	3	7.89	1.04	1.87	<2.00
Background						
BKG01@0-6"	10/24/2024	0-0.5	7.83	2.06	1.28	<2.00
BKG01@3'	10/24/2024	3	7.94	2.44	2.53	<2.00
BKG01@4'	10/24/2024	4	8.14	1.85	2.80	<2.00
Maximum Root Background Concentration (0 - 3 ft)			-	2.44	-	-
Mean Root Background Concentration (0 - 3 ft)			-	2.25	-	-
Maximum Background Concentration			-	2.44	-	-
Mean Background Concentration			-	2.12	-	-

Notes:

1. **Bold** faced values exceed the ECMC Table 915-1 limit(s), but are within background concentrations.
2. **Bold** faced values exceed the ECMC Table 915-1 limit(s) and native background concentrations.
3. Brown highlighted soil analytical values indicate a regulatory exceedance.

ECMC = Colorado Energy & Carbon Management Commission

EC = Electrical conductivity

SAR = Sodium adsorption ratio

mmhos/cm = millimhos per centimeter

mg/L = milligram per liter

(<) = Analytical result is less than the indicated laboratory reporting limit.

ft. = Feet

bgs = Below ground surface

TABLE 5
SUMMARY OF METALS IN SOIL CHEMISTRY DATA
NOBLE ENERGY, INC.- 100322
SH FARMS C17-03, C17-06 & C17-19 FLOWLINES, WELD COUNTY, COLORADO
REM #s 34145 and 34708

Sample ID	Sample Date	Depth (ft. bgs)	Arsenic (mg/kg)	Barium (mg/kg)	Cadmium (mg/kg)	Chromium (VI) ^[4] (mg/kg)	Copper (mg/kg)	Lead (mg/kg)	Nickel (mg/kg)	Selenium (mg/kg)	Silver (mg/kg)	Zinc (mg/kg)
ECMC Table 915-1 Limits (Residential SSL)			0.68	15,000	71	0.3	3,100	400	1,500	390	390	23,000
ECMC Table 915-1 Limits (Protection of Groundwater SSL)			0.29	82	0.38	0.00067	46	14	26	0.26	0.8	370
SH FARMS C17-03 Flowline												
FL01-04@3'	10/24/24	3	2.05	69.4	0.400	<0.30	21.3	18.3	6.24	<0.260	0.0377	468
FL01-06@3'	10/24/24	3	2.26	52.6	<0.200	<0.30	3.92	4.42	3.93	<0.260	0.0254	14.8
FL01-07@3'	10/24/24	3	2.62	83.5	0.201	<0.30	7.12	5.63	4.83	<0.260	0.0285	19.1
SH FARMS C17-06 Flowline												
FL01-04@3'	10/24/24	3	2.17	68.1	0.331	<0.30	56.7	13.0	5.71	<0.260	0.0336	92.1
FL01-06@3'	10/24/24	3	3.90	54.9	<0.200	<0.30	4.48	5.95	4.49	<0.260	0.0274	17.3
FL01-07@3'	10/24/24	3	2.55	81.4	<0.200	<0.30	6.40	4.95	4.38	<0.260	0.0242	18.4
SH FARMS C17-19 Flowline												
FL01-04@3'	10/24/24	3	1.96	63.7	0.290	<0.30	16.7	16.5	4.81	<0.260	0.0276	72.8
FL01-06@3'	10/24/24	3	1.97	65.6	0.295	<0.30	14.0	12.1	4.54	<0.260	0.0282	58.7
FL01-07@3'	10/24/24	3	2.53	83.7	<0.200	<0.30	5.90	4.85	4.22	<0.260	0.0227	18.4
FL01R-W@3'	10/24/24	3	2.26	85.9	<0.200	<0.30	6.13	7.91	3.93	<0.260	0.0279	62.0
Background												
BKG01@0-6"	10/24/24	0-0.5	2.93	99.9	<0.200	<0.30	15.2	5.58	4.02	<0.260	0.0217	26.3
BKG01@3'	10/24/24	3	3.07	81.0	0.226	<0.30	6.29	8.22	5.36	<0.260	0.0331	20.6
BKG01@4'	10/24/24	4	3.48	81.7	<0.200	<0.30	4.60	6.63	5.75	<0.260	0.0410	19.5
Maximum Background Concentration			3.48	99.9	0.226	-	15.2	8.22	-	-	-	26.3
Maximum Background Concentration X 1.25			4.35	125	0.283	-	19.0	10.3	-	-	-	32.9
Mean Background Concentration			3.16	87.5	-	-	8.70	6.81	-	-	-	22.1
Mean Background Concentration X 1.25			3.95	109	-	-	10.9	8.51	-	-	-	27.7

Notes:

- Bold** faced values exceed the ECMC Table 915-1 limit(s), but are within 1.25x background concentrations.
- Red** faced values exceed the ECMC Table 915-1 limit(s) and native background concentrations.
- Pink & blue highlighted soil analytical values indicate an exceedance of the referenced soil screening level (SSL).
- Compound falls within ECMC Table 915-1 Footnote 9.
- Non-detect background results accounted for in the highest background concentration by using the reporting limit.

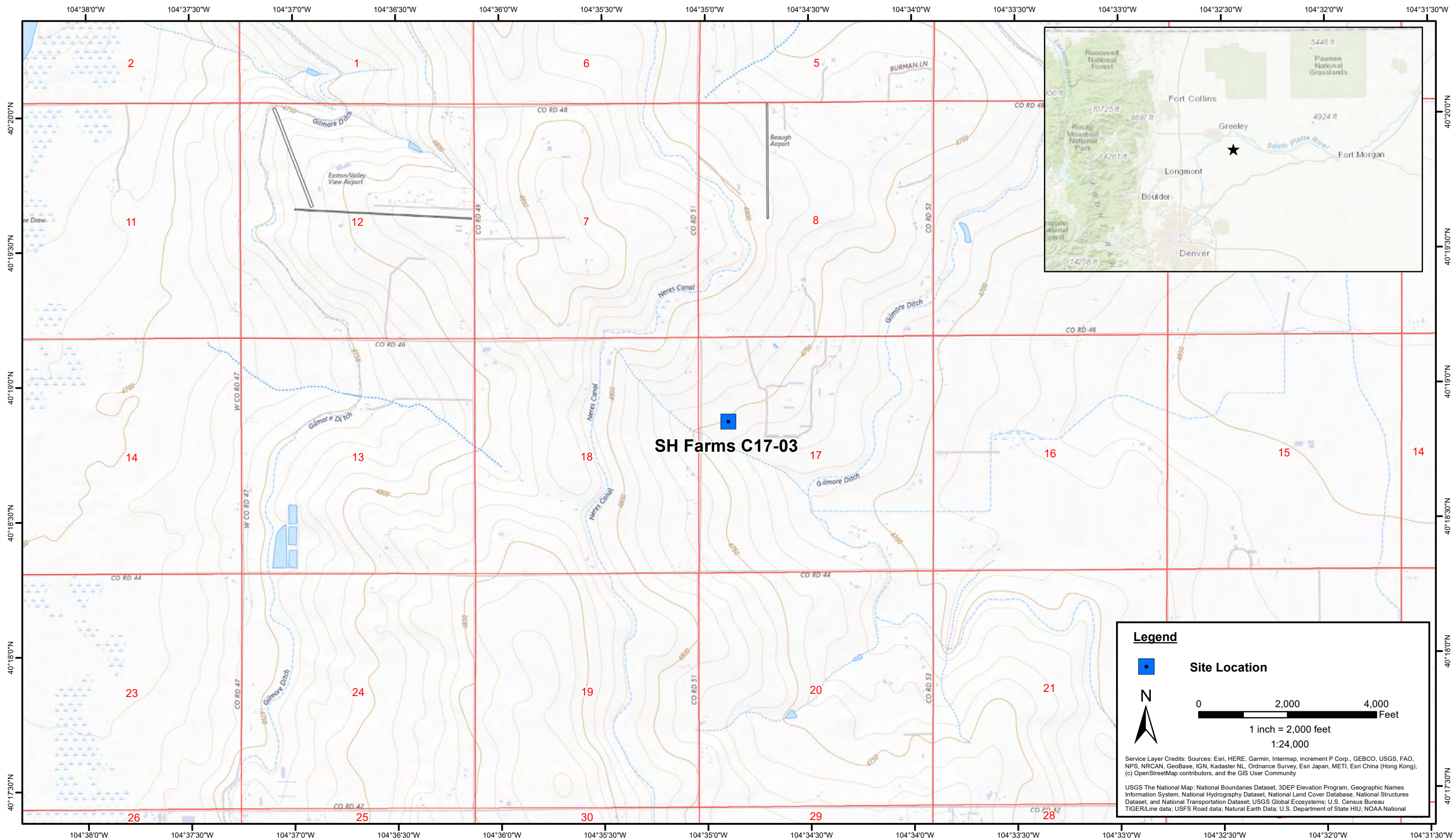
ECMC = Energy & Carbon Management Commission

(<) = Analytical result is less than the indicated laboratory reporting limit.


mg/kg = Milligrams per kilogram


ft. = Feet

bgs = Below ground surface



Legend

 **Site Location**

 N

0 2,000 4,000 Feet

1 inch = 2,000 feet
1:24,000

Service Layer Credits: Sources: Esri, HERE, Garmin, Intermap, increment P Corp., GEBCO, USGS, FAO, NPS, NRCAN, GeoBase, IGN, Kadaster NL, Ordnance Survey, Esri Japan, METI, Esri China (Hong Kong), (c) OpenStreetMap contributors, and the GIS User Community

USGS The National Map: National Boundaries Dataset, 3DEP Elevation Program, Geographic Names Information System, National Hydrography Dataset, National Land Cover Database, National Structures Dataset, and National Transportation Dataset; USGS Global Ecosystems; U.S. Census Bureau TIGER/Line data; USFS Road data; Natural Earth Data; U.S. Department of State HIU; NOAA National

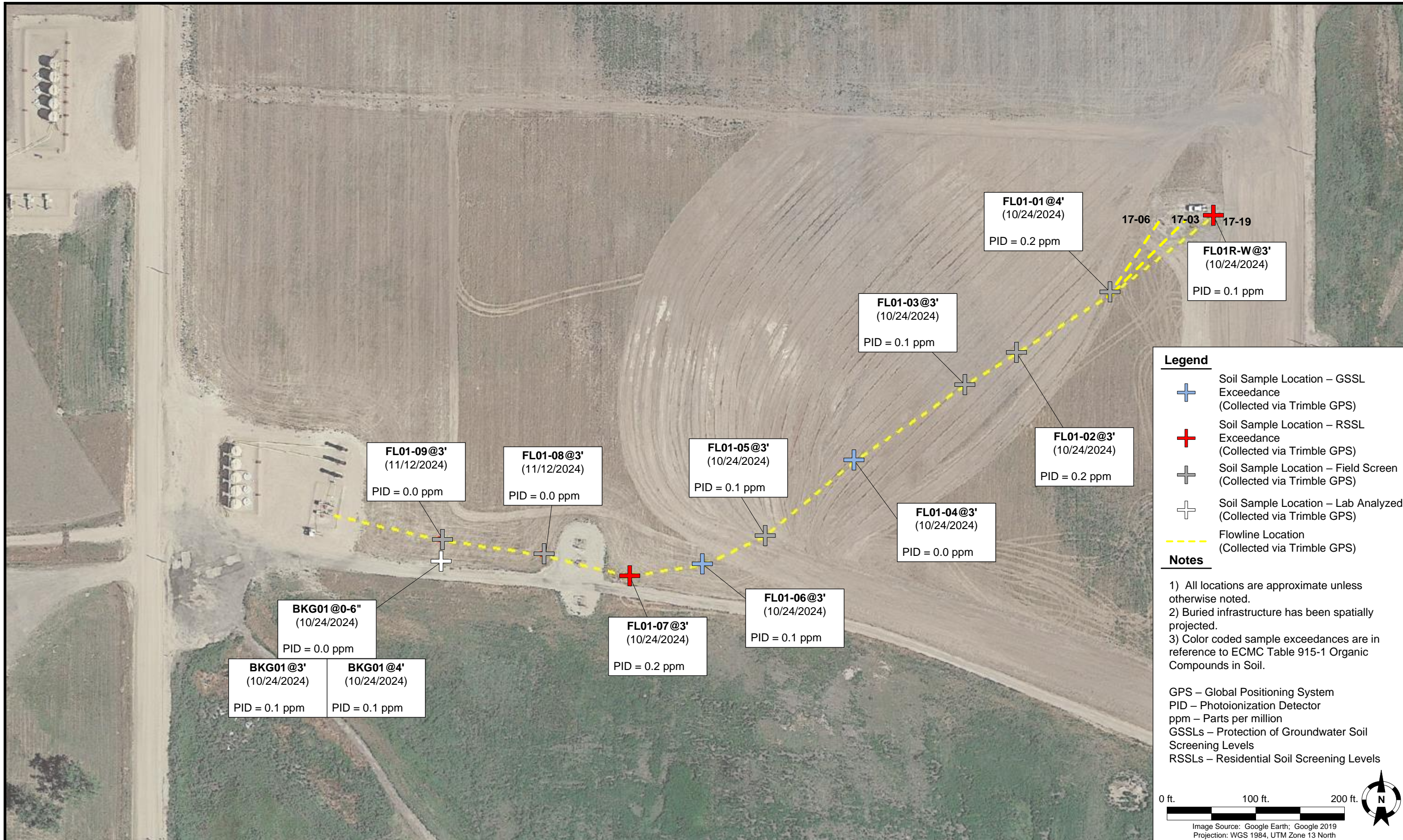
DATE:	November 2024
DESIGNED BY:	J. Whritenour
DRAWN BY:	L. Reed

 **Tasman, Inc.**
6855 W. 119th Ave
Broomfield, CO 80020

Noble Energy Inc. - 100322 - DJ Basin
SH Farms C17-03
SWNW, Section 17, Township 4 North, Range 64 West
Weld County, Colorado

Site Location Map

Figure
1



FL01-01@4' (10/24/2024) PID = 0.2 ppm	FL01-03@3' (10/24/2024) PID = 0.1 ppm	FL01-05@3' (10/24/2024) PID = 0.1 ppm	FL01-04@3' (10/24/2024) PID = 0.0 ppm	FL01-02@3' (10/24/2024) PID = 0.2 ppm	FL01-01@4' (10/24/2024) PID = 0.2 ppm	FL01R-W@3' (10/24/2024) PID = 0.1 ppm
FL01-09@3' (11/12/2024) PID = 0.0 ppm	FL01-08@3' (11/12/2024) PID = 0.0 ppm	FL01-07@3' (10/24/2024) PID = 0.2 ppm	FL01-06@3' (10/24/2024) PID = 0.1 ppm	FL01-05@3' (10/24/2024) PID = 0.1 ppm	FL01-04@3' (10/24/2024) PID = 0.0 ppm	FL01-03@3' (10/24/2024) PID = 0.1 ppm
BKG01@0-6" (10/24/2024) PID = 0.0 ppm	BKG01@3' (10/24/2024) PID = 0.1 ppm	BKG01@4' (10/24/2024) PID = 0.1 ppm	FL01-09@3' (11/12/2024) PID = 0.0 ppm	FL01-08@3' (11/12/2024) PID = 0.0 ppm	FL01-07@3' (10/24/2024) PID = 0.2 ppm	FL01-06@3' (10/24/2024) PID = 0.1 ppm

Legend

- + Soil Sample Location – GSSL Exceedance (Collected via Trimble GPS)
- + Soil Sample Location – RSSL Exceedance (Collected via Trimble GPS)
- + Soil Sample Location – Field Screen (Collected via Trimble GPS)
- + Soil Sample Location – Lab Analyzed (Collected via Trimble GPS)
- Flowline Location (Collected via Trimble GPS)

Notes

- 1) All locations are approximate unless otherwise noted.
- 2) Buried infrastructure has been spatially projected.
- 3) Color coded sample exceedances are in reference to ECMC Table 915-1 Organic Compounds in Soil.

GPS – Global Positioning System
 PID – Photoionization Detector
 ppm – Parts per million
 GSSLs – Protection of Groundwater Soil Screening Levels
 RSSLs – Residential Soil Screening Levels

0 ft. 100 ft. 200 ft.

Image Source: Google Earth; Google 2019
 Projection: WGS 1984, UTM Zone 13 North

DATE: November 13, 2024

DESIGNED BY: J. Whritenour

DRAWN BY: M. Liston



Tasman, Inc.
 6855 W 119th Avenue
 Broomfield, CO 80020

Noble Energy, Inc. – 100322 – DJ Basin
SH Farms C17-03, C17-06 & C17-19 Flowlines
 SWNW, Section 17, Township 4 North, Range 64 West
 Weld County, Colorado

**FLOWLINE
 DECOMMISSIONING
 AND SOIL SAMPLE
 LOCATION MAP**
 (10/24/2024 and 11/12/2024)

**FIGURE
 2**