

GODDSELL PERFORATORS

DEWELEY COLO

GAMMA RAY NEUTRON

WELL NO.

COMPANY

WELL

FIELD

COUNTY

LOCATION

SEC. 23

TWP. 4N

RGE. 67W

ELEVATIONS

PERMANENT DATUM

GROUND LEVEL

11 FT. ABOVE PERMANENT DATUM OF

DEWELEY COLO

DEWELEY COLO

DEWELEY COLO

DEWELEY COLO

DEWELEY COLO

DEWELEY COLO

DEWELEY COLO

DEWELEY COLO

DEWELEY COLO

DEWELEY COLO

DEWELEY COLO

DEWELEY COLO

DEWELEY COLO

DEWELEY COLO

DEWELEY COLO

DEWELEY COLO

DEWELEY COLO

DEWELEY COLO

DEWELEY COLO

DEWELEY COLO

DEWELEY COLO

DEWELEY COLO

DEWELEY COLO

DEWELEY COLO

DEWELEY COLO

DEWELEY COLO

DEWELEY COLO

RECEIVED

JAN 24 1995

WATTEBERG

WELD

WELD

WELD

WELD

WELD

WELD

WELD

WELD

WELD

WELD

WELD

WELD

WELD

WELD

WELD

WELD

WELD

WELD

WELD

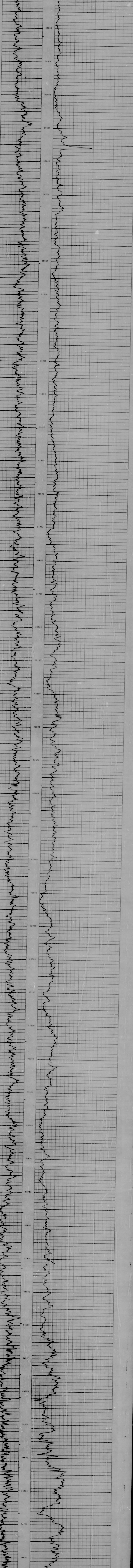
WELD

WELD

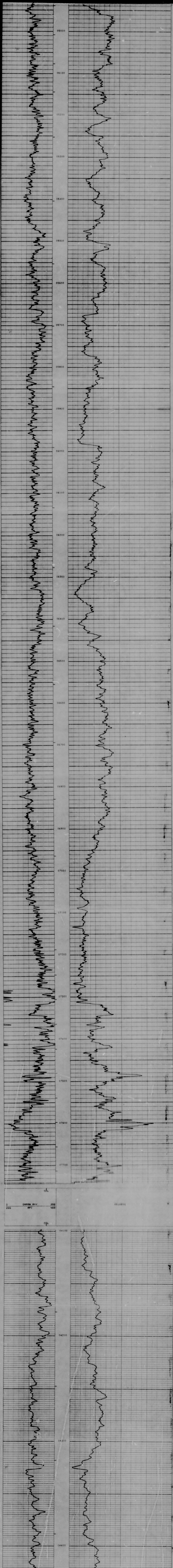
WELD

WELD

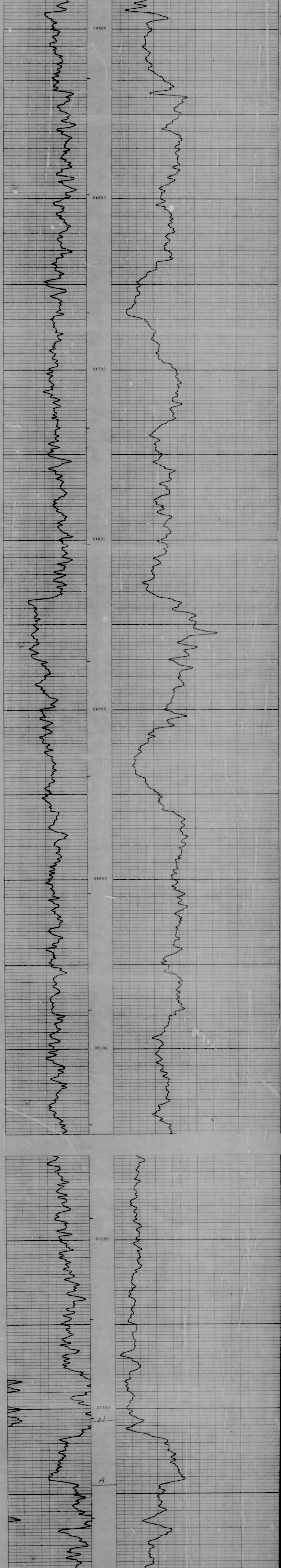
303 353 5118  
THANK YOU FOR CALLING GODDSELL



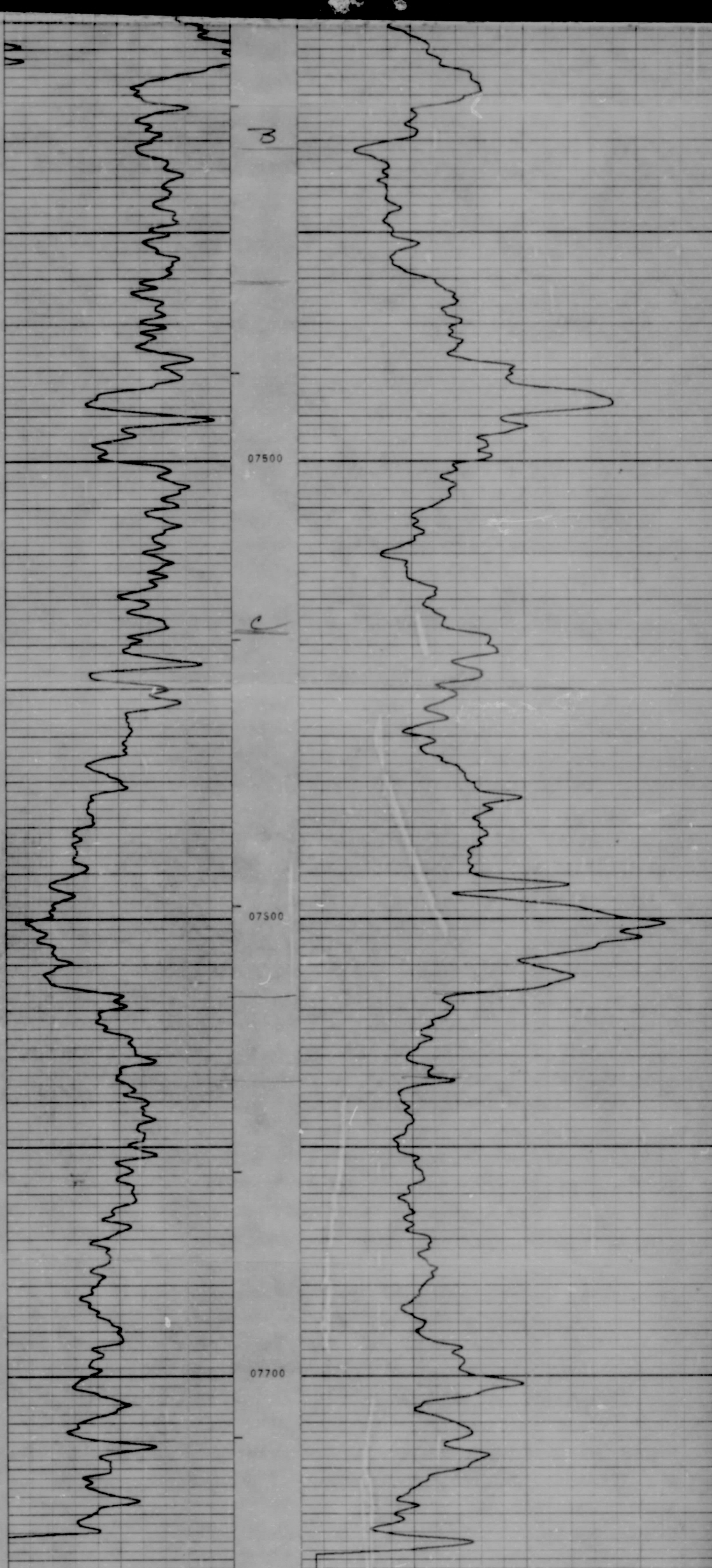




0 200 400 600 800 1000 1200 1400 1600 1800 2000 2200 2400 2600 2800 3000 3200 3400 3600 3800 4000 4200 4400 4600 4800 5000 5200 5400 5600 5800 6000 6200 6400 6600 6800 7000 7200 7400 7600 7800 8000 8200 8400 8600 8800 9000 9200 9400 9600 9800 10000







CCL		NEUTRON
0	200	
200	400	
CCL		

DRILLER T.D.	7832	COMPANY	SNYDER OIL CORP.	07 21 9
LOGGER T.D.	7744	WELL	UPRC NO. 23-S 1 7	
BOTTOM LOGGED		FIELD	WATTENBERG	
INTERVAL	7743	LOCATION	NH 6W SEC 23 4N 67W	
		COUNTY	DELD	
		STATE	COLO	