

0.0	ILD (OHMM)	50.000	
	SFLA(OHMM)		
0.0	SFLA(OHMM)	50.000	TENS(LB )
0.0		10.000	10000.0
		CILD(MHMQ)	
-160.0	SP (MV)	2000.0	0.0

SENSOR MEASURE POINT TO TOOL ZERO

ILD	9.4	FEET	GR	32.9	FEET
SFL	6.4	FEET	ILM	5.8	FEET
SPAR	2.5	FEET	SP	2.5	FEET
TENS	2.5	FEET			

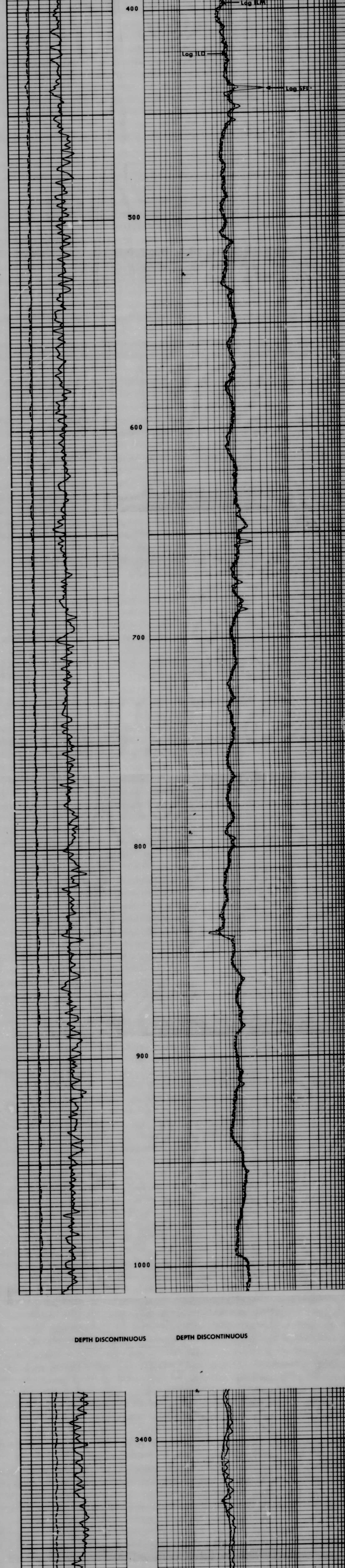
PARAMETERS

NAME	VALUE	UNIT	NAME	VALUE	UNIT
DSEC	6.00000	MHMO	WMUD	9.40000	LB/G
MSEC	7.30000	MHMO	SBR	1.00000	DHMM
BHS	OPEN		FFHI	SPHI	
7	87500	IN			

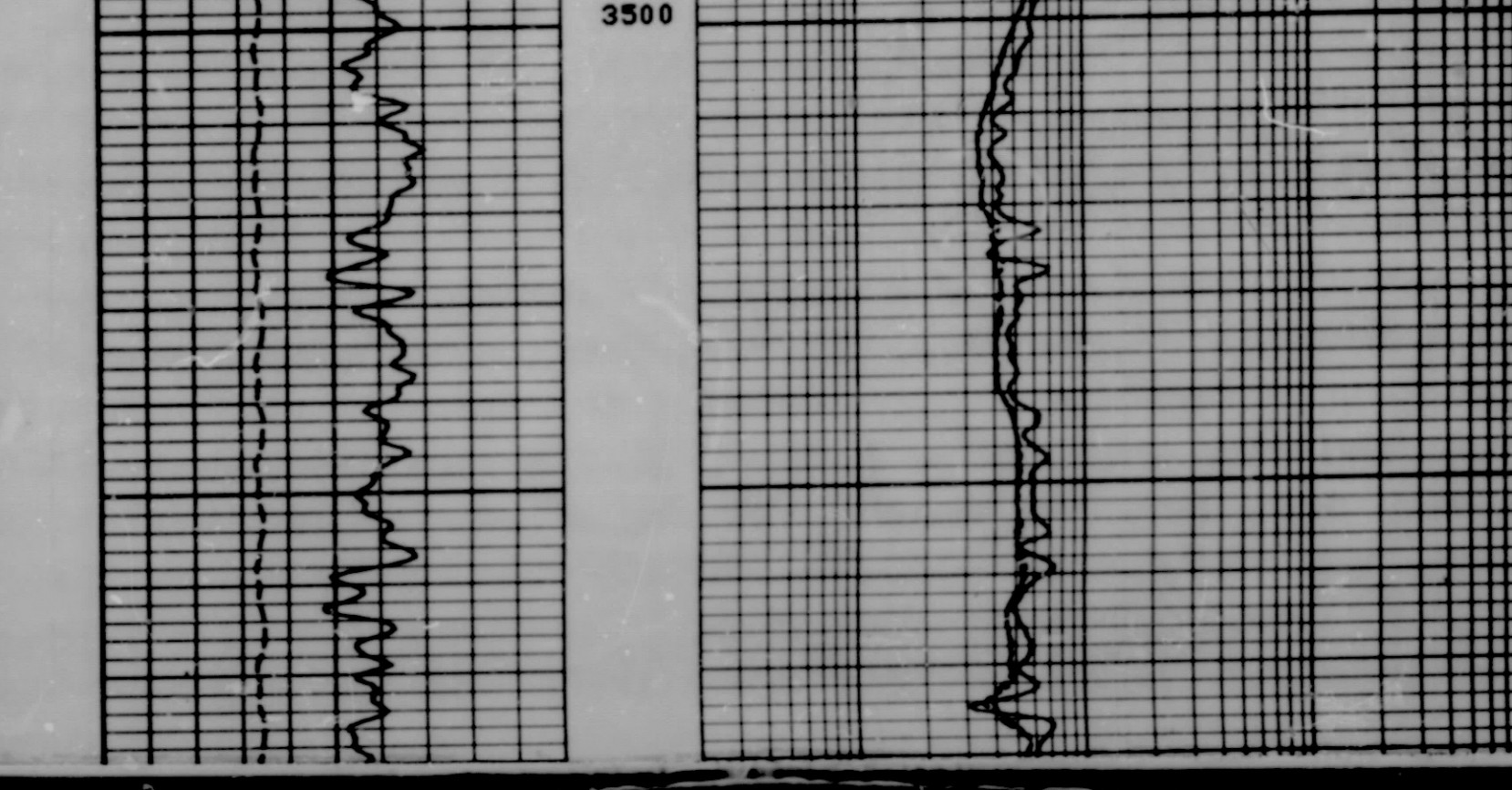
SENSOR MEASURE POINT TO TOOL ZERO	
ILD	9.4 FEET
SFL	6.4 FEET
SPAR	2.5 FEET
TENS	2.5 FEET
GR	32.9 FEET
ILM	5.8 FEET
SP	2.5 FEET

PARAMETERS					
NAME	VALUE	UNIT	NAME	VALUE	UNIT
DSEC	6.00000	MMHQ	UNUD	9.40000	LB/G
HSEC	2.20000	MMHQ	SBR	1.00000	OHMM
RHS	OPEN		FPHI	SPHI	
BS	2.87500	IN			

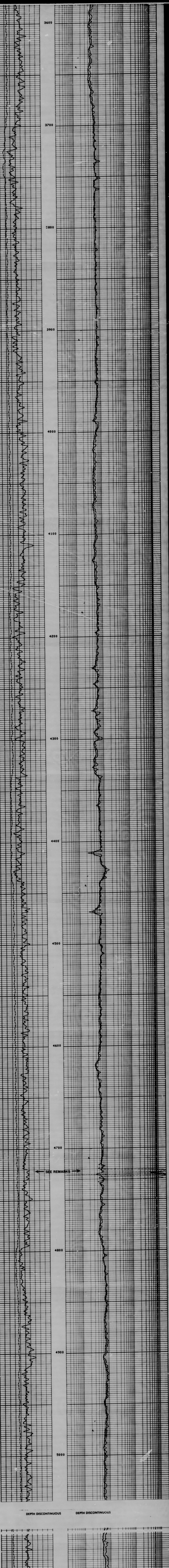
CP 28.4A	FILE 2	05-OCT-87 07:18		
GR (GAPI)	200.00	ILD (OHMM)	0.0	10000.0
SP (MV)	-160.0	SFLA (OHMM)	0.0	2000.0
		ILM (OHMM)	0.0	2000.0
		SFLU (OHMM)	0.0	2000.0



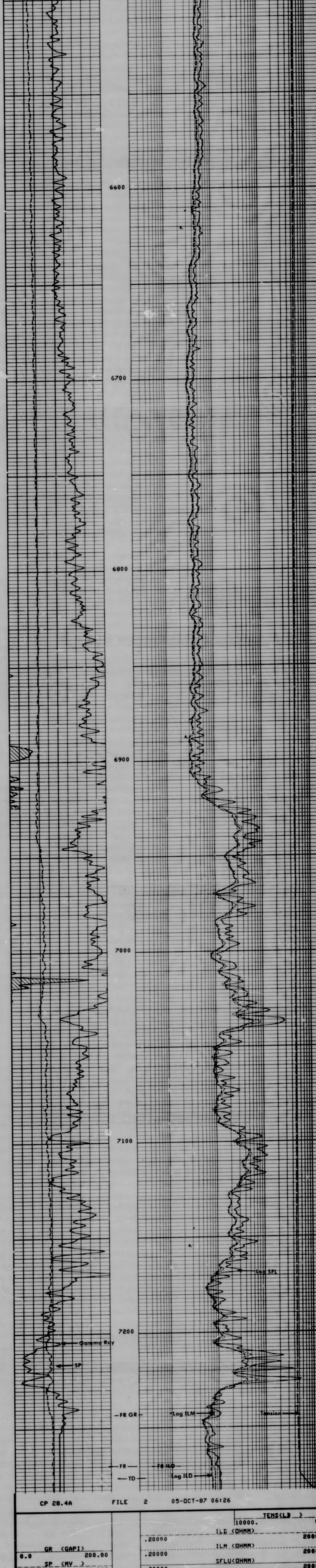
DEPTH DISCONTINUOUS      DEPTH DISCONTINUOUS







DEPTH DISCONTINUOUS      DEPTH DISCONTINUOUS



160.0

20.000

1.0000

SENSOR MEASURE POINT TO TOOL ZERO

ILD	9.4	FEET	GR	32.9	FEET
SFL	6.4	FEET	ILM	5.8	FEET
SPAR	2.5	FEET	SP	2.5	FEET
TENS	2.5	FEET			

PARAMETERS

NAME	VALUE	UNIT	NAME	VALUE	UNIT
DSEC	6.00000	MMHD	MMUD	9.40000	LB/G
MSEC	7.30000	MMHD	SBR	1.00000	OHMM
BHS	OPEN		FPHI	SPHI	
BS	2.82500	IN			

10000.


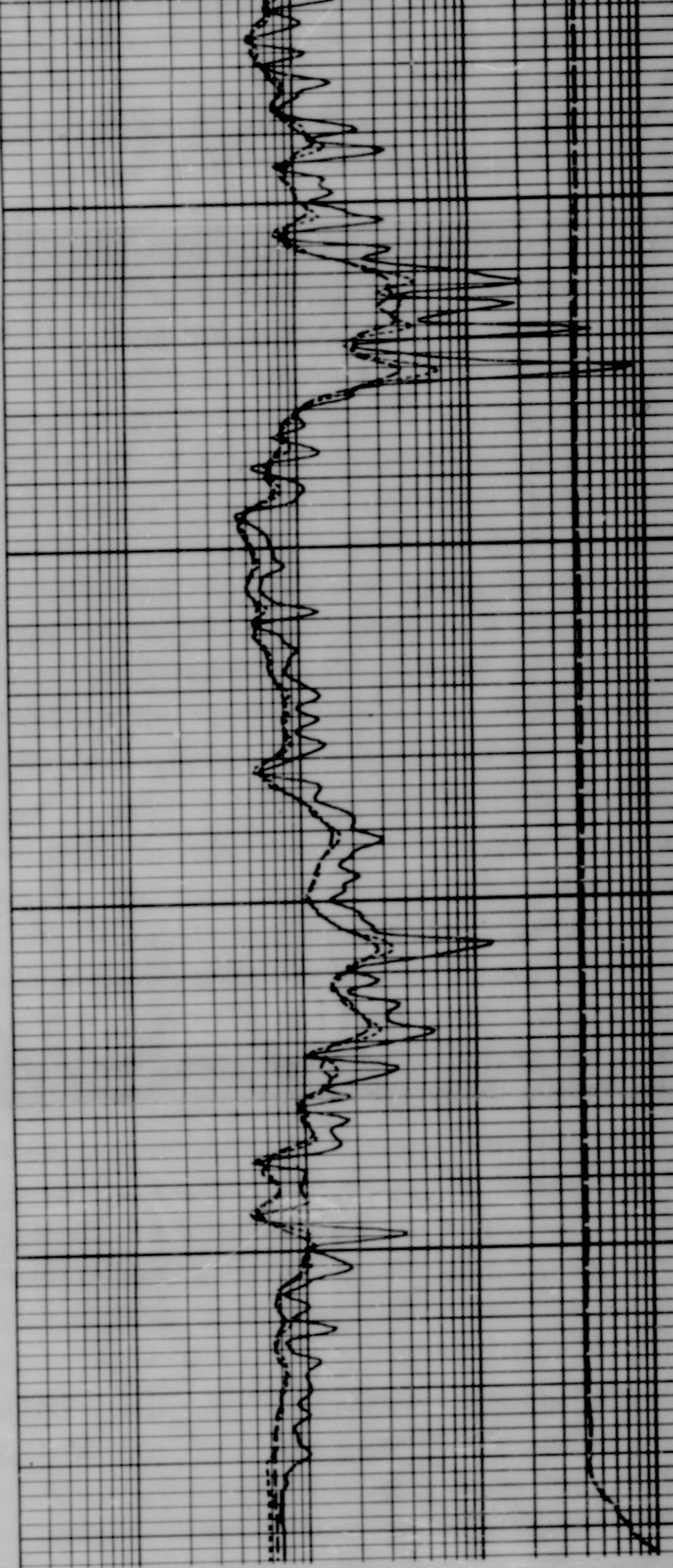
TENS(LB) 2

0.0

ILD (OHMM)

2000



SP (MV )		SFLU(OHMM)	
-160.0	40.000	.20000	2000.0
REPEAT SECTION		REPEAT SECTION	
CP 28.4A		FILE 1 05-OCT-87 06:22	
			
CP 28.4A		FILE 1 05-OCT-87 06:19	
REPEAT SECTION		REPEAT SECTION	
GR (GAPI)		TENS(LB )	
0.0 200.00		10000. 0.0	
SP (MV )		ILD (OHMM)	
-160.0 40.000		.20000 2000.0	
		ILM (OHMM)	
		.20000 2000.0	
		SFLU(OHMM)	
		.20000 2000.0	
SENSOR MEASURE POINT TO TOOL ZERO			
ILD 9.4 FEET		GR 32.9 FEET	
SFL 6.4 FEET		ILM 5.8 FEET	
SPAR 2.5 FEET		SP 2.5 FEET	
TENS 2.5 FEET			
PARAMETERS			
NAME VALUE UNIT		NAME VALUE UNIT	
DSEC 6.00000 MMHO		WMUD 9.40000 LB/G	
MSEC 7.30000 MMHO		SBR 1.00000 OHMM	
BHS OPEN		FPHI SPHI	
BS 7.82500 IN			

## BEFORE SURVEY CALIBRATION SUMMARY

PERFORMED: 05-OCT-87 05:45  
PROGRAM FILE: ISN (VERSION 28.4A 86/04/03)

## DITD ELECTRONICS CALIBRATION SUMMARY

	MEASURED		CALIBRATED		UNITS
	ZERO	PLUS	ZERO	PLUS	
ILD	.81	546.8	0.0	497.1	MMHO
ILM	.37	528.9	0.0	500.6	MMHO
SFL	.89	523.0	0.0	500.0	MMHO

ILD SONDE ERROR CORRECTION : 6.0 MMHO  
ILM SONDE ERROR CORRECTION : 7.3 MMHO

## SGTE DETECTOR CALIBRATION SUMMARY

	MEASURED		CALIBRATED	UNITS
	BKGD	JIG		
GR	44	202	169	GAPI

CP 28.4A FILE 0 05-OCT-87 05:45

## SHOP SUMMARY

PERFORMED: 24-SEP-87 14:27  
PROGRAM FILE: SHOP (VERSION 28.4 86/07/21)

## DITD ELECTRONICS CALIBRATION SUMMARY

	TEST LOOP CALIBRATION				TOOL CHECK		UNITS
	MEASURED		CALIBRATED		CALIBRATED		
	ZERO	PLUS	ZERO	PLUS	ZERO	PLUS	
ILD	-5.3	536.7	0.0	500.0	0.0	497.2	MMHO
ILM	-6.9	517.1	0.0	500.0	0.0	500.5	MMHO

ILD SONDE ERROR CORRECTION : 6.0 MMHO  
ILM SONDE ERROR CORRECTION : 7.3 MMHO

(IS:1082, IC:1096)