

MOFFAT ENGINEERING SERVICES

Gunbarrel Business Park
6395 Gunpark Drive — Penthouse
Boulder, Colorado 80301

303-530-0608



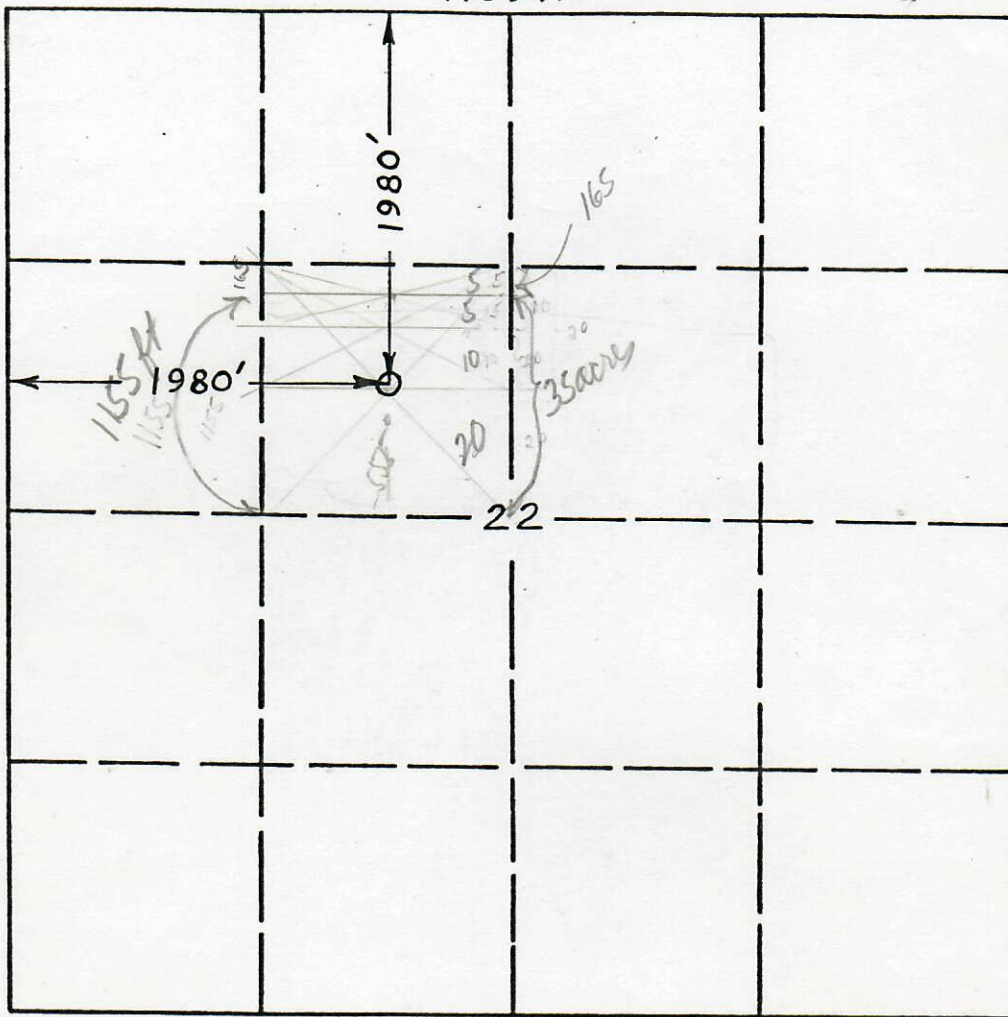
RECEIVED

JUN 22 1981

COLD, OIL & GAS CONS. COMM.

1980
1320
165
1155
495

R 69 W



1320
165
1155

1320
165
1485

Moffat Engineering Services has in accordance with a request from Martin Exploration Management Corp. determined the location of their - Walker #22-1 to be the Center of the Southeast Quarter (SE $\frac{1}{4}$) North-west Quarter (NW $\frac{1}{4}$) Section 22. (1980' FNL, 1980' FWL) Township 1 North, Range 69 West, Boulder County, Colorado.