

TABLE 1  
SUMMARY OF VOLATILE ORGANIC SOIL CHEMISTRY DATA  
PDC 69175  
GUS LD PAD, ADAMS COUNTY, COLORADO  
REM #

Sample ID	Sample Date	Depth (ft)	Benzene (mg/kg)	Toluene (mg/kg)	Ethyl-Benzene (mg/kg)	Xylenes (mg/kg)	1,2,4- Trimethyl- Benzene (mg/kg)	1,3,5- Trimethyl- Benzene (mg/kg)	Naphthalene (mg/kg)	TPH (mg/kg)	TPH GRO (mg/kg)	TPH DRO (mg/kg)	TPH ORO (mg/kg)
ECMC Table 915-1 Limits (Residential SSL)			1.2	490	5.8	58	30	27	2	500	500**		
ECMC Table 915-1 Limits (Protection of Groundwater SSL)			0.0026	0.69	0.78	9.9	0.0081	0.0087	0.0038	500	500**		
Waste Char	5/30/2024	0.2	<0.20	0.87	<0.50	3.3	6.4	<0.50	1.3	4,210	210	3000	1000
FS-01	06/03/2024	1.5	<0.00200	<0.00200	<0.00200	<0.00200	<0.00200	<0.00200	<0.002	<125.2	<0.200	<25.0	<100
FS-02	06/03/2024	1.5	<0.00200	<0.00200	<0.00200	<0.00200	<0.00200	<0.00200	<0.002	<125.2	<0.200	<25.0	<100
FS-03	06/03/2024	1.5	<0.00200	<0.00200	<0.00200	<0.00200	<0.00200	<0.00200	<0.002	<125.2	<0.200	<25.0	<100
FS-04	06/03/2024	1	<0.00200	<0.00200	<0.00200	<0.00200	<0.00200	<0.00200	<0.002	<125.2	<0.200	<25.0	<100
FS-05	06/03/2024	0.5	<0.00200	<0.00200	<0.00200	<0.00200	<0.00200	<0.00200	<0.002	<125.2	<0.200	<25.0	<100
FS-06	06/03/2024	0.5	<0.00200	<0.00200	<0.00200	<0.00200	<0.00200	<0.00200	<0.002	<125.2	<0.200	<25.0	<100
FS-07	06/03/2024	0.5	<0.00200	<0.00200	<0.00200	<0.00200	<0.00200	<0.00200	<0.002	<125.2	<0.200	<25.0	<100
FS-08	06/03/2024	0.5	<0.00200	<0.00200	<0.00200	<0.00200	<0.00200	<0.00200	<0.002	<125.2	<0.200	<25.0	<100
FS-09	06/03/2024	0.5	<0.00200	<0.00200	<0.00200	<0.00200	<0.00200	<0.00200	<0.002	<125.2	<0.200	<25.0	<100
SS-01	06/03/2024	1	<0.00200	<0.00200	<0.00200	<0.00200	<0.00200	<0.00200	<0.002	<125.2	<0.200	<25.0	<100
SS-02	06/03/2024	1	<0.00200	<0.00200	<0.00200	<0.00200	<0.00200	<0.00200	<0.002	<125.2	<0.200	<25.0	<100

1. Bold values exceed the ECMC Table 915-1 limit(s)
  2. Red & blue highlighted soil analytical values indicate an exceedance of the referenced soil screening level (SSL)
  3. \* Indicates laboratory minimum detection limit in excess of SSL
  4. \*\* Summation of GRO+DRO+ORO must be less than 500 mg/kg
- NA - Not analyzed

= Source material characterization sample, excavated and transported off site for disposal.

= Material excavated and transported off site for disposal.

TABLE 2  
SUMMARY OF POLYCYCLIC AROMATIC HYDROCARBON SOIL CHEMISTRY DATA  
PDC 69175  
GUS LD PAD, ADAMS COUNTY, COLORADO  
REM #

Sample ID	Sample Date	Depth (ft)	Acenaphthene (mg/kg)	Anthracene (mg/kg)	Benzo (a) Anthracene (mg/kg)	Benzo (a) Pyrene (mg/kg)	Benzo (b) Fluoranthene (mg/kg)	Benzo (k) Fluoranthene (mg/kg)	Chrysene (mg/kg)	Dibenzo (a,h) Anthracene (mg/kg)	Fluoranthene (mg/kg)	Fluorene (mg/kg)	Indeno (1,2,3- cd) Pyrene (mg/kg)	Pyrene (mg/kg)	1-Methyl - Naphthalene (mg/kg)	2-Methyl- Naphthalene (mg/kg)
ECMC Table 915-1 Limits (Residential SSL)			360	1800	1.1	0.11	1.1	11	110	0.11	240	240	1.1	180	18	24
ECMC Table 915-1 Limits (Protection of Groundwater SSL)			0.55	5.8	0.011	0.24	0.3	2.9	9	0.096	8.9	0.54	0.98	1.3	0.006	0.019
Waste Char	5/30/2024	0.2	<0.020	<0.020	<0.005	<0.020	<0.020	<0.020	<0.020	<0.020	<0.020	<0.020	<0.020	<0.020	<0.002	<0.002
FS-01	06/03/2024	1.5	<0.020	<0.020	<0.005	<0.020	<0.020	<0.020	<0.020	<0.020	<0.020	<0.020	<0.020	<0.020	<0.002	<0.002
FS-02	06/03/2024	1.5	<0.020	<0.020	<0.005	<0.020	<0.020	<0.020	<0.020	<0.020	<0.020	<0.020	<0.020	<0.020	<0.002	<0.002
FS-03	06/03/2024	1.5	<0.020	<0.020	<0.005	<0.020	<0.020	<0.020	<0.020	<0.020	<0.020	<0.020	<0.020	<0.020	<0.002	<0.002
FS-04	06/03/2024	1	<0.020	<0.020	<0.005	<0.020	<0.020	<0.020	<0.020	<0.020	<0.020	<0.020	<0.020	<0.020	<0.002	<0.002
FS-05	06/03/2024	0.5	<0.020	<0.020	<0.005	<0.020	<0.020	<0.020	<0.020	<0.020	<0.020	<0.020	<0.020	<0.020	<0.002	<0.002
FS-06	06/03/2024	0.5	<0.020	<0.020	<0.005	<0.020	<0.020	<0.020	<0.020	<0.020	<0.020	<0.020	<0.020	<0.020	<0.002	<0.002
FS-07	06/03/2024	0.5	<0.020	<0.020	<0.005	<0.020	<0.020	<0.020	<0.020	<0.020	<0.020	<0.020	<0.020	<0.020	<0.002	<0.002
FS-08	06/03/2024	0.5	<0.020	<0.020	<0.005	<0.020	<0.020	<0.020	<0.020	<0.020	<0.020	<0.020	<0.020	<0.020	<0.002	<0.002
FS-09	06/03/2024	0.5	<0.020	<0.020	<0.005	<0.020	<0.020	<0.020	<0.020	<0.020	<0.020	<0.020	<0.020	<0.020	<0.002	<0.002
SS-01	06/03/2024	1	<0.020	<0.020	<0.005	<0.020	<0.020	<0.020	<0.020	<0.020	<0.020	<0.020	<0.020	<0.020	<0.002	<0.002
SS-02	06/03/2024	1	<0.020	<0.020	<0.005	<0.020	<0.020	<0.020	<0.020	<0.020	<0.020	<0.020	<0.020	<0.020	<0.002	<0.002

1. Bold values exceed the ECMC Table 915-1 limit(s)

2. Red & blue highlighted soil analytical values indicate an exceedance of the referenced soil screening level (SSL)

3. \* Indicates laboratory minimum detection limit in excess of SSL

NA - Not analyzed

Source material characterization sample, excavated and transported off site for disposal.  
Material excavated and transported off site for disposal.

TABLE 3  
SUMMARY OF SOIL SUITABILITY FOR RECLAMATION  
PDC 69175  
GUS LD PAD, ADAMS COUNTY, COLORADO  
REM #

Sample ID	Sample Date	Depth (ft)	pH (Standard Units)	EC (mmhos/cm)	SAR (Standard Units)	Boron (mg/L)
ECMC Table 915-1 Soil Suitability Limits			6 - 8.3	<4	<6	2
Waste Char	5/30/2024	0.2	8.27	<b>8.36</b>	<b>37.5</b>	<b>6.59</b>
FS-01	06/03/2024	1.5	8.09	<b>4.72</b>	<b>28.7</b>	<0.0983
FS-02	06/03/2024	1.5	8.08	<b>5.82</b>	<b>26.0</b>	<0.101
FS-03	06/03/2024	1.5	8.19	3.69	<b>12.7</b>	0.212
FS-04	06/03/2024	1	<b>8.34</b>	2.22	<b>7.91</b>	0.247
FS-05	06/03/2024	0.5	<b>8.51</b>	2.04	<b>14.7</b>	0.279
FS-06	06/03/2024	0.5	8.19	2.65	3.38	0.391
FS-07	06/03/2024	0.5	8.26	<b>4.90</b>	<b>14.0</b>	0.815
FS-08	06/03/2024	0.5	7.96	<b>11.30</b>	<b>15.0</b>	1.47
FS-09	06/03/2024	0.5	<b>8.40</b>	2.43	<b>10.5</b>	0.413
SS-01	06/03/2024	1	8.06	<b>8.65</b>	<b>22.7</b>	<b>3.71</b>
SS-02	06/03/2024	1	8.26	2.30	<b>14.6</b>	<0.0996
BG-NE-IN	8/22/2024	1	<b>9.23</b>	1.07	5.89	<2.00
BG-SE-IN	8/22/2024	1	<b>8.84</b>	1.02	<b>11.0</b>	<2.00
BG-SE-OFF	8/22/2024	1	<b>8.34</b>	0.15	0.266	<2.00
BG-S-C	8/22/2024	1	7.68	2.78	0.199	<2.00
BG-S-W	8/22/2024	1	7.16	1.04	0.22	<2.00
BG-NE-ON 2 Ft	11/8/2024	2	<b>9.19</b>	1.03	<b>7.06</b>	<2.00
BG-NW-ON 2 Ft	11/8/2024	2	<b>8.31</b>	1.65	<b>10.1</b>	<2.00
BG-NN-ON 2 Ft	11/8/2024	2	<b>9.03</b>	1.26	<b>17.4</b>	<2.00
BG-SE-ON 1 Ft	11/8/2024	1	<b>9.31</b>	2.00	<b>12.0</b>	<2.00
BG-SW-ON 1 Ft	11/8/2024	1	<b>9.39</b>	1.01	<b>8.32</b>	<2.00
SS-01(2) 1 Ft	11/8/2024	1	<b>8.82</b>	0.68	2.65	<2.00
SS-01(2) 2 Ft	11/8/2024	2	<b>9.10</b>	0.63	5.26	<2.00
Maximum Root Background Concentration (0 - 3 ft)			9.39	2.78	17.4	<2.00

1. Bold faced values exceed the ECMC Table 915-1 limit(s)
2. Blue highlighted soil analytical values indicate a regulatory exceedance

NA - Not analyzed

= Source material characterization sample, excavated and transported off site for disposal.  
 = Material excavated and transported off site for disposal.  
 = Resolved via confirmation samples at 1 Ft and 2 Ft

TABLE 4  
SUMMARY OF METALS IN SOIL CHEMISTRY DATA  
PDC 69175  
GUS LD PAD, ADAMS COUNTY, COLORADO  
REM #

Sample ID	Sample Date	Depth (ft)	Arsenic (mg/kg)	Barium (mg/kg)	Cadmium (mg/kg)	Chromium (VI) (mg/kg)	Copper (mg/kg)	Lead (mg/kg)	Nickel (mg/kg)	Selenium (mg/kg)	Silver (mg/kg)	Zinc (mg/kg)
ECMC Table 915-1 Limits (Residential SSL)			0.68	15000	71	0.3	3100	400	1500	390	390	23000
ECMC Table 915-1 Limits (Protection of Groundwater SSL)			0.29	82	0.38	0.00067	46	14	26	0.26	0.8	370
Waste Char	5/30/2024	0.2	<b>3.28</b>	69.2	<0.200	<0.30	3.91	4.66	3.99	<0.260	<0.0200	14.6
FS-01	06/03/2024	1.5	<b>2.39</b>	27.2	0.211	<0.276	10.5	10.8	9.59	<0.247	<0.0952	<35.2
FS-02	06/03/2024	1.5	<b>4.22</b>	22.4	0.157	<0.374	11.2	10.6	9.28	<b>0.27</b>	<0.0853	40.0
FS-03	06/03/2024	1.5	<b>4.14</b>	52.4	0.311	<0.342	11.2	11.5	13.1	<0.234	<0.0899	42.7
FS-04	06/03/2024	1	<b>5.44</b>	60.7	<b>0.418</b>	<0.368	15.5	<b>27.6</b>	14.1	<0.243	<0.0933	52.7
FS-05	06/03/2024	0.5	<b>3.16</b>	<b>171</b>	0.132	<b>0.568</b>	<9.11	7.17	7.46	<0.237	<0.0911	33.7
FS-06	06/03/2024	0.5	<b>3.31</b>	<b>101</b>	0.125	<0.296	<9.74	7.19	7.48	<0.253	<0.0974	<36.0
FS-07	06/03/2024	0.5	<b>3.26</b>	<b>164</b>	0.117	<0.265	10.7	7.16	7.54	<0.241	<0.0928	34.8
FS-08	06/03/2024	0.5	<b>2.68</b>	60.6	0.0901	<0.282	<8.58	5.58	6.61	<0.223	<0.0858	<31.7
FS-09	06/03/2024	0.5	<b>2.94</b>	<b>149</b>	0.101	<0.354	<9.38	6.41	7.11	<0.244	<0.0938	<34.7
SS-01	06/03/2024	1	<b>3.81</b>	<b>127</b>	0.127	<0.348	9.53	8.06	8.45	<0.243	<0.0935	35.1
SS-02	06/03/2024	1	<b>2.79</b>	25.3	0.173	<0.296	12.1	13.9	8.84	<0.253	<0.0974	37.1
BG-NE-IN	8/22/2024	1	<b>3.91</b>	<b>116</b>	<b>0.400</b>	<0.30	6.3	7.57	6.04	<0.260	0.0391	22.1
BG-SE-IN	8/22/2024	1	<b>1.92</b>	45.5	<0.200	<0.30	4.06	3.73	3.86	<0.260	0.0443	12.5
BG-SE-OFF	8/22/2024	1	<b>7.30</b>	47.1	0.24	<0.30	5.65	7.87	5.89	<0.234	0.0246	19.8
BG-S-C	8/22/2024	1	<b>4.08</b>	9.23	<0.200	<0.30	6.37	12.3	3.21	<0.260	0.0211	17.7
BG-S-W	8/22/2024	1	<b>1.08</b>	6.26	<0.200	<0.30	6.46	9.54	3.29	<0.260	0.0333	10.8
BG-NE-ON 2 Ft	11/8/2024	2	<b>6.12</b>	12.3	<0.200	<0.30	8.08	11.7	4.54	<0.260	0.0221	16.7
BG-NW-ON 2 Ft	11/8/2024	2	<b>4.68</b>	9.42	<0.200	<0.30	5.16	5.78	5.48	<0.260	<0.0200	17
BG-NN-ON 2 Ft	11/8/2024	2	<b>3.98</b>	62.9	<b>0.406</b>	<0.30	9.39	<b>15</b>	7.51	<b>0.396</b>	0.0397	28.9
BG-SE-ON 1 Ft	11/8/2024	1	<b>5.12</b>	70.4	0.362	<0.30	19.5	11.2	7.19	<b>0.274</b>	0.0356	27.3
BG-SW-ON 1 Ft	11/8/2024	1	<b>2.62</b>	61.2	<0.200	<0.30	5.54	5.05	5.07	<0.260	0.0223	16.6
SS-01(2) 1 Ft	11/8/2024	1	<b>2.59</b>	<b>167</b>	0.212	<0.30	5.91	6.58	4.7	<0.260	0.0486	19.8
SS-01(2) 2 Ft	11/8/2024	2	<b>3.17</b>	61.1	<b>0.422</b>	<0.30	8.3	11.3	7.85	<0.260	0.0339	27.4
Maximum Root Zone Background Concentration (0 - 3 ft)			7.30	167	0.406	<0.30	6.46	12.3	6.04	<0.260	0.0443	22.1
125% Average Root Zone Background Concentration (0 - 3 ft)			9.13	209	0.508	0.38	8.08	15.38	7.55	0.325	0.0554	27.6

1. Bold values exceed the ECMC Table 915-1 limit(s)

2. Red & blue highlighted soil analytical values indicate an exceedance of the referenced soil screening level (SSL)

\* Indicates laboratory minimum detection limit in excess of SSL

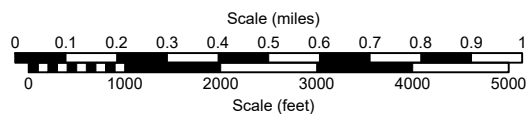
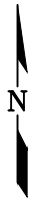
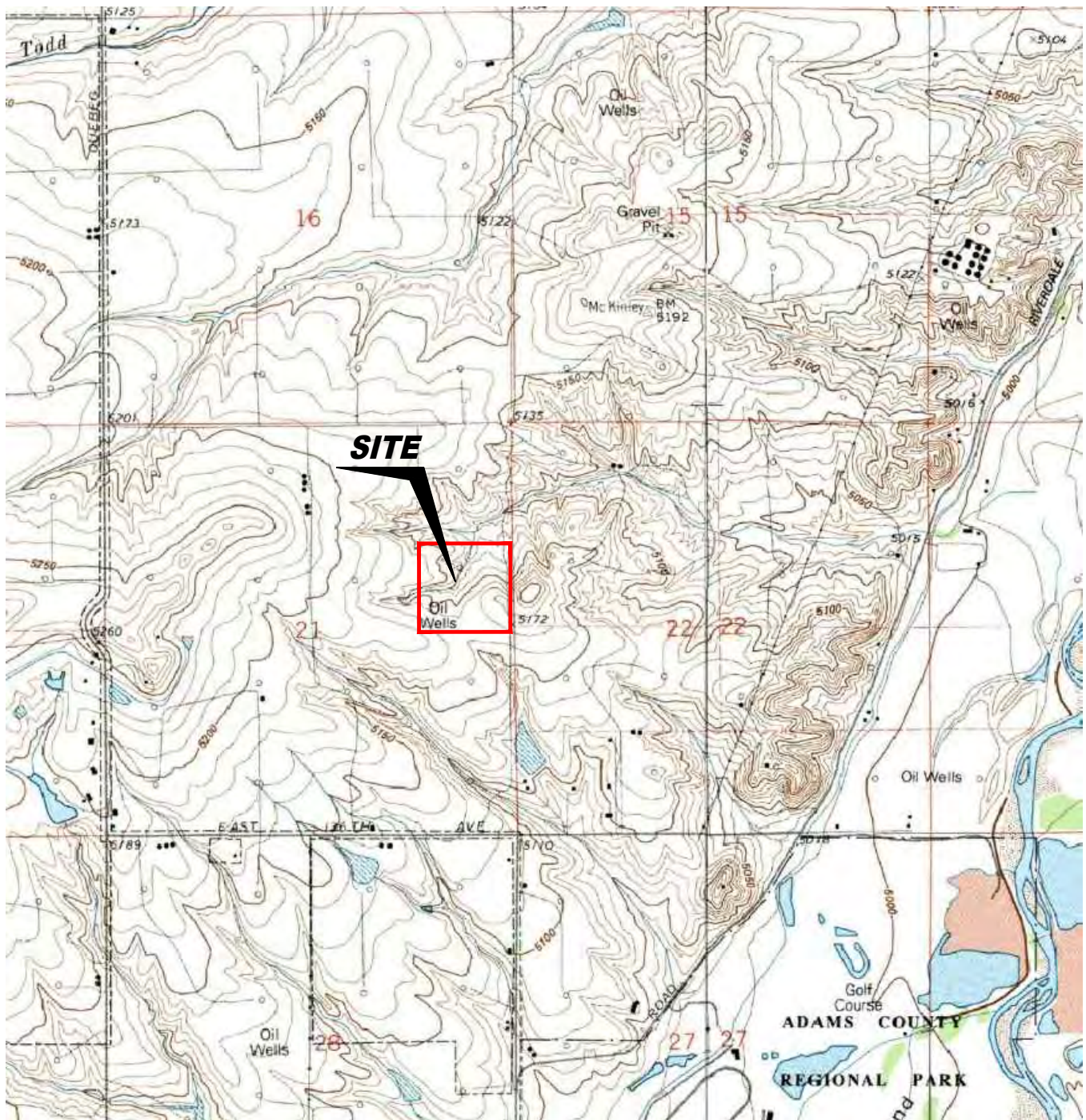
NA - Not analyzed

Sample ID	Sample Date	Depth (ft)	Arsenic (mg/kg)	Barium (mg/kg)	Cadmium (mg/kg)	Chromium (VI) (mg/kg)	Copper (mg/kg)	Lead (mg/kg)	Nickel (mg/kg)	Selenium (mg/kg)	Silver (mg/kg)	Zinc (mg/kg)
ECMC Table 915-1 Limits (Residential SSL)			0.68	15000	71	0.3	3100	400	1500	390	390	23000
ECMC Table 915-1 Limits (Protection of Groundwater SSL)			0.29	82	0.38	0.00067	46	14	26	0.26	0.8	370

= Source material characterization sample, excavated and transported off site for disposal.

= Material excavated and transported off site for disposal.





USGS 7.5 MINUTE SERIES (TOPOGRAPHIC)

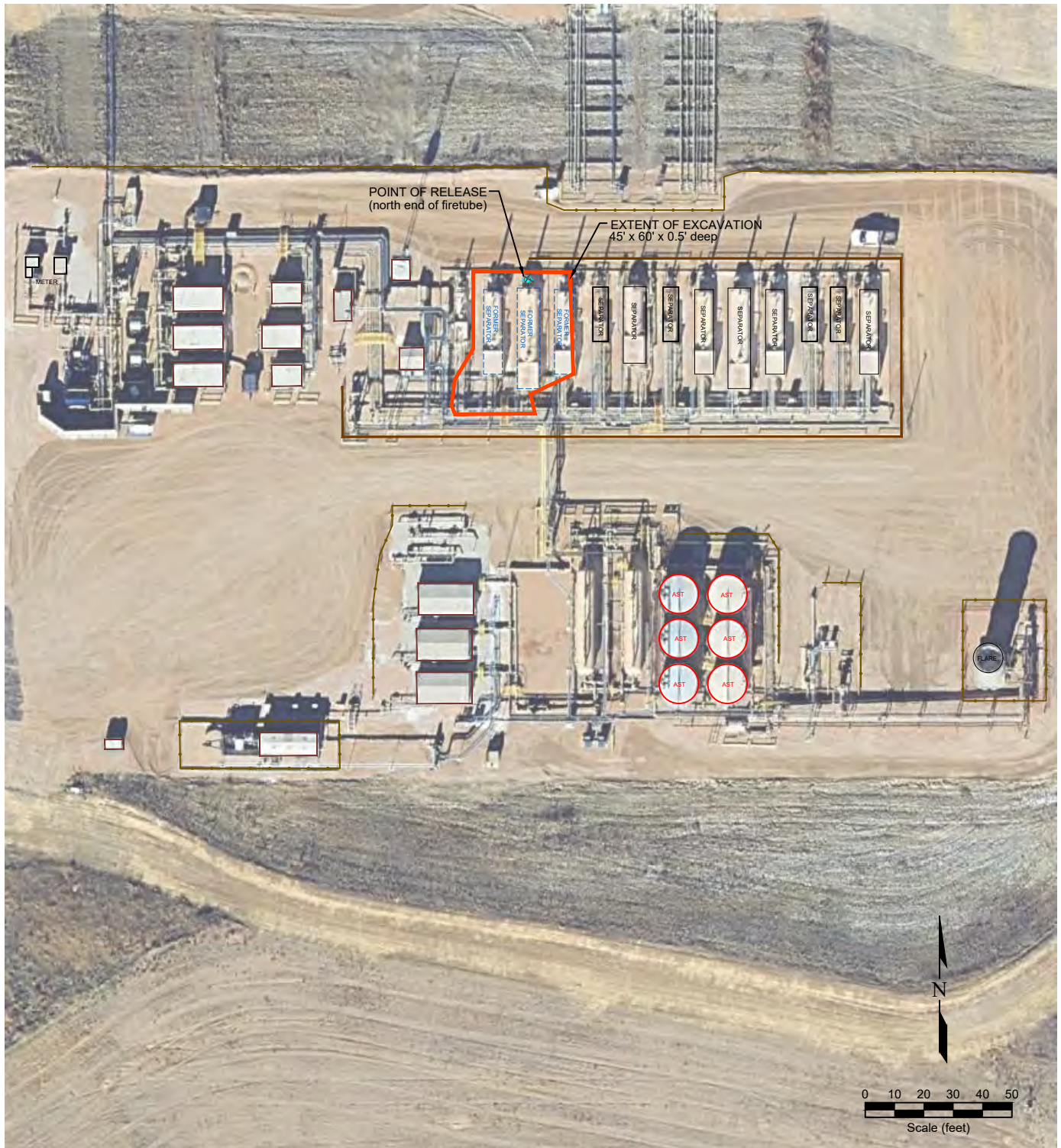
Figure 1  
**SITE LOCATION MAP**

**PDC Energy, Inc. ~ Gus LD Pad**  
SENE Sec. 21, T1S, R67W, 6th PM  
Adams County, Colorado  
39.952212°, -104.885496°

Project # <b>C024-122</b>	API #	Facility #
Date <b>9/19/24</b>	Remediation #	Filename <b>24122T</b>







#### LEGEND

	POINT OF RELEASE		ABOVE GROUND STORAGE TANK		FORMER FACILITY		EXTENT OF EXCAVATION
	BUILDING		BUILDING		FENCE LINE		CONTAINMENT BERM
					CONTAINMENT WALL		

Figure 2  
SITE MAP

**PDC Energy, Inc. ~ Gus LD Pad**  
 SENE Sec. 21, T1S, R67W, 6th PM  
 Adams County, Colorado  
 39.952212°, -104.885496°

Project No. <b>C024-122</b>	API #	Facility #
Date <b>9/19/24</b>	Remediation #	Filename <b>24122Q</b>





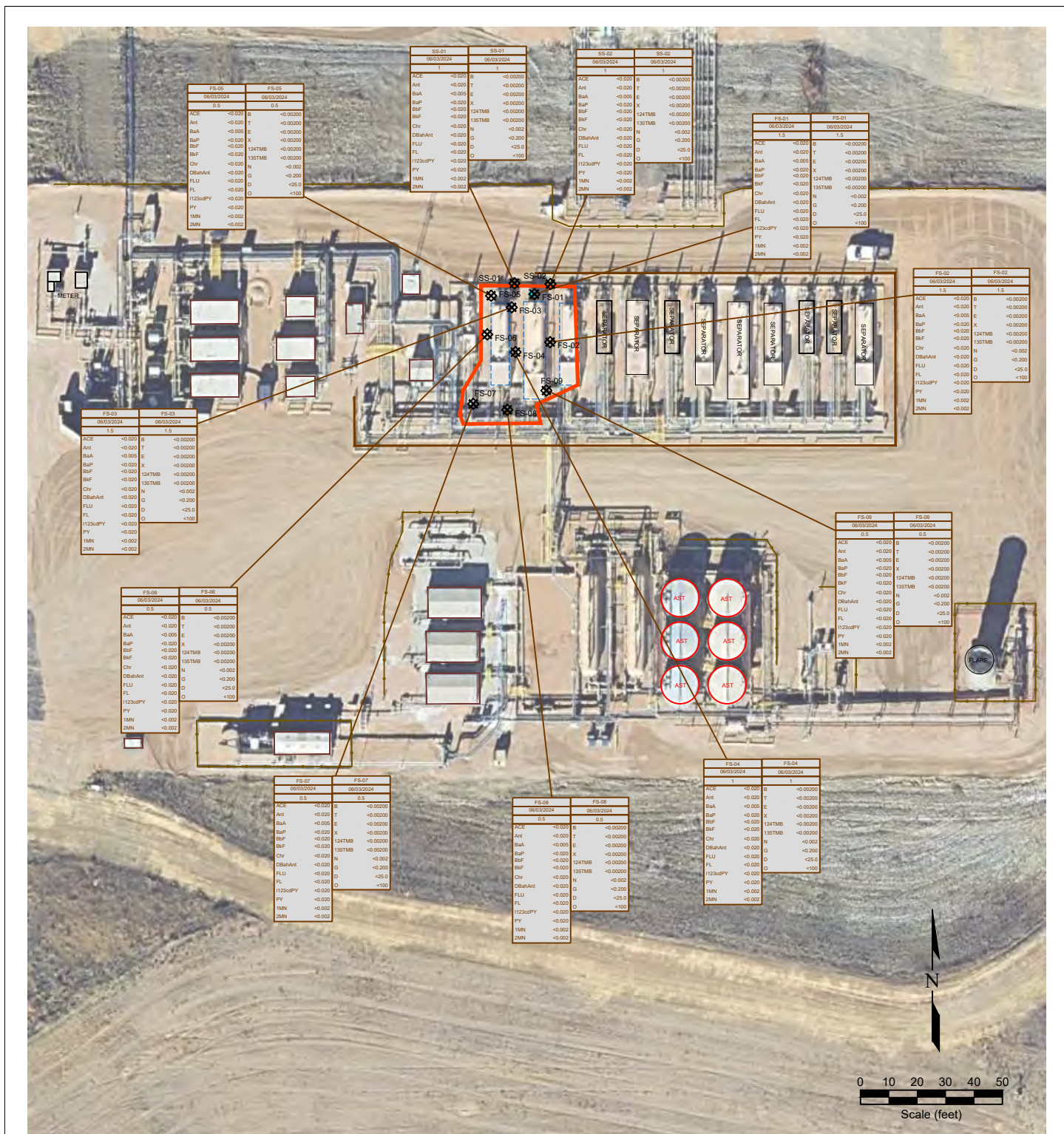


Figure 3  
ORGANIC SOIL CHEMISTRY MAP

**PDC Energy, Inc. ~ Gus LD Pad**  
**SENE Sec. 21, T1S, R67W, 6th PM**  
**Adams County, Colorado**  
**39.952212°N, -104.885496°W**

Project No.  
**C024-122**

Date  
**9/19/24**

API #

Remediation #

Facility #

Filename  
**24122Q**





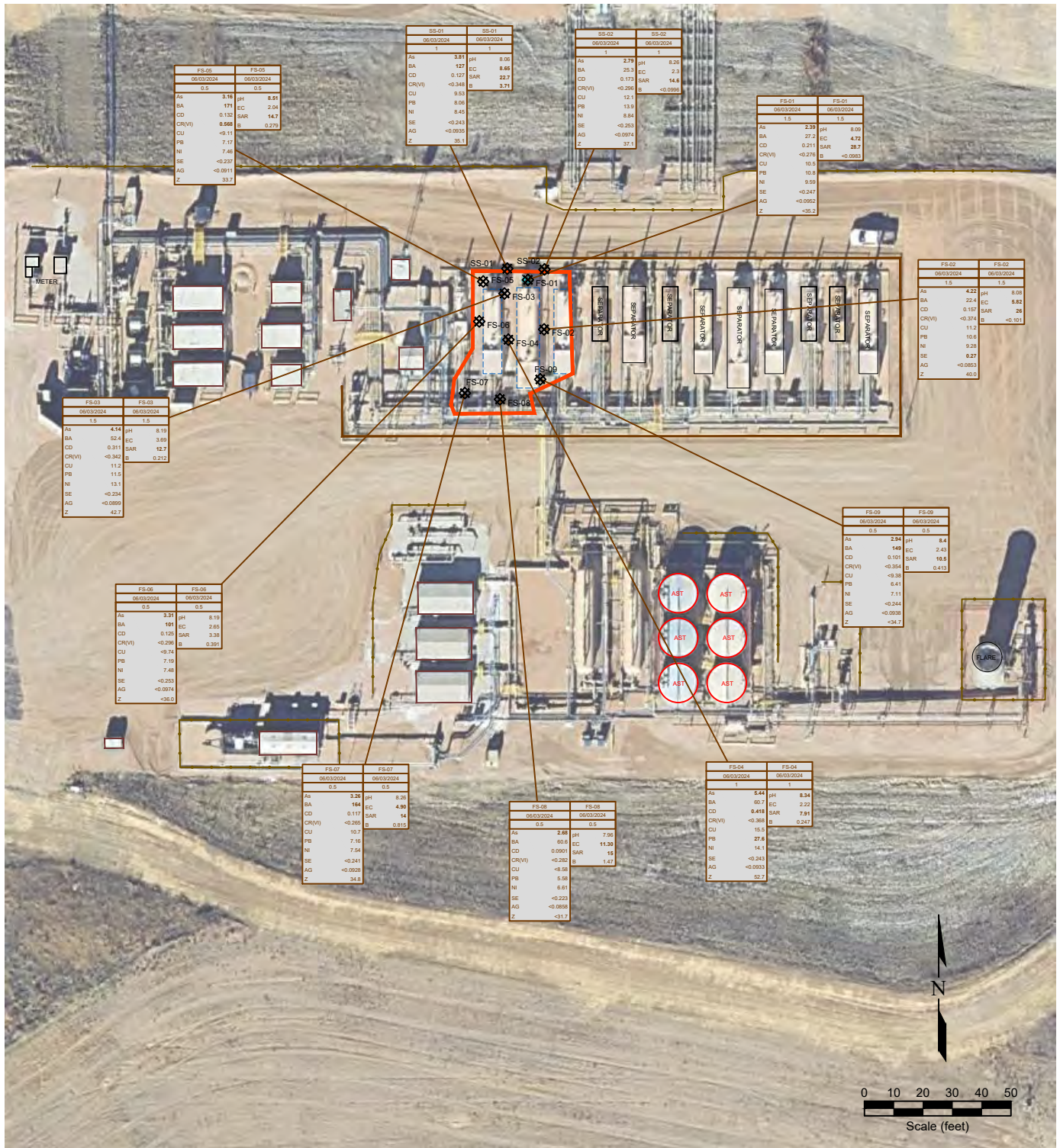


Figure 4  
METALS AND INORGANIC SOIL CHEMISTRY MAP

PDC Energy, Inc. ~ Gus LD Pad  
SENE Sec. 21, T1S, R67W, 6th PM  
Adams County, Colorado  
39.952212°, -104.885496°

Project No.  
C024-122

API #

Facility #

Date  
9/19/24

Remediation #

Filename  
24122Q





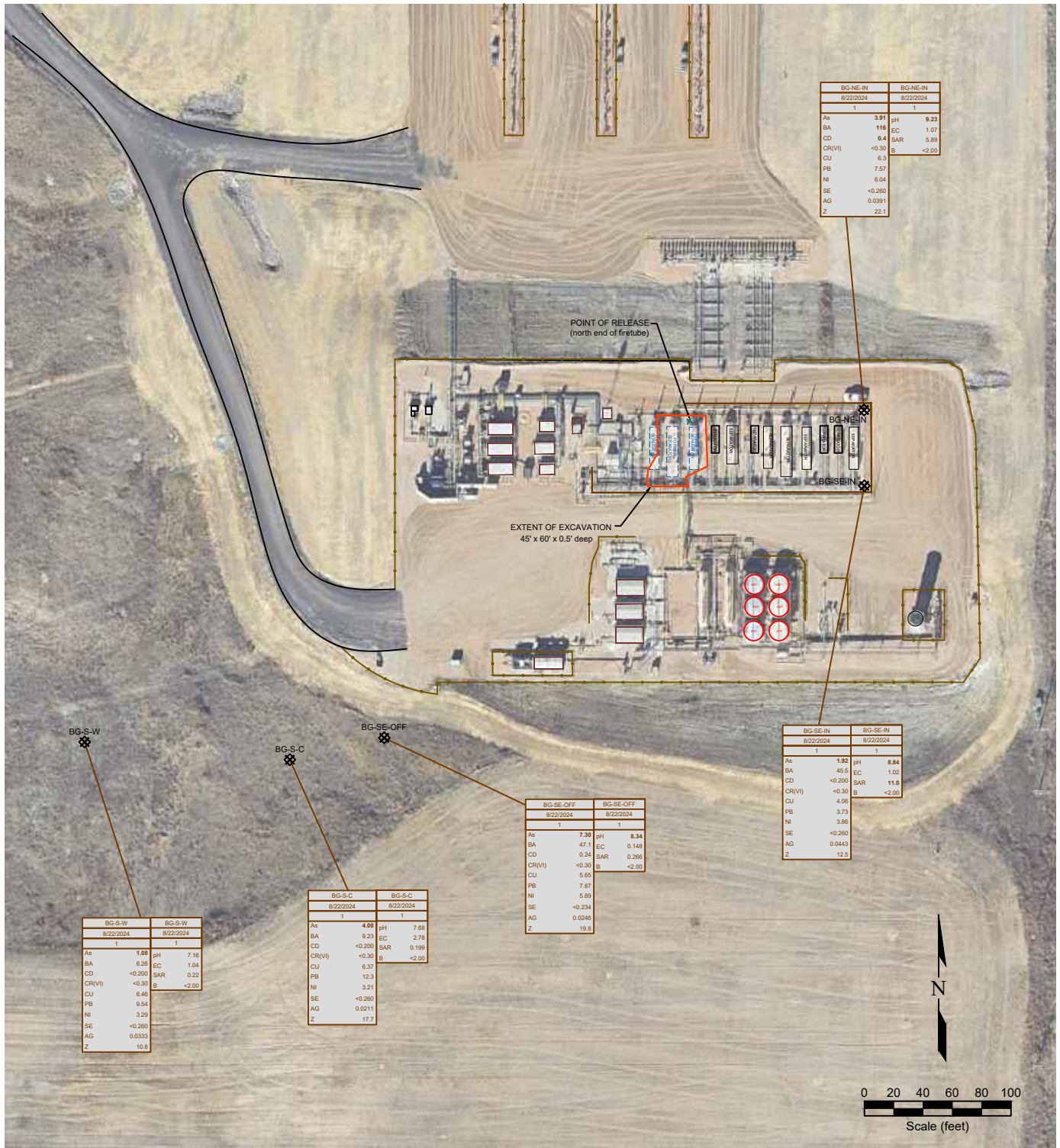


Figure 5  
BACKGROUND SAMPLE SOIL CHEMISTRY MAP

PDC Energy, Inc. ~ Gus LD Pad  
SENE Sec. 21, T1S, R67W, 6th PM  
Adams County, Colorado  
39.952212°, -104.885496°

Project No.  
C024-122

API #

Facility #

Date  
9/19/24

Remediation #

Filename  
24122QBKG





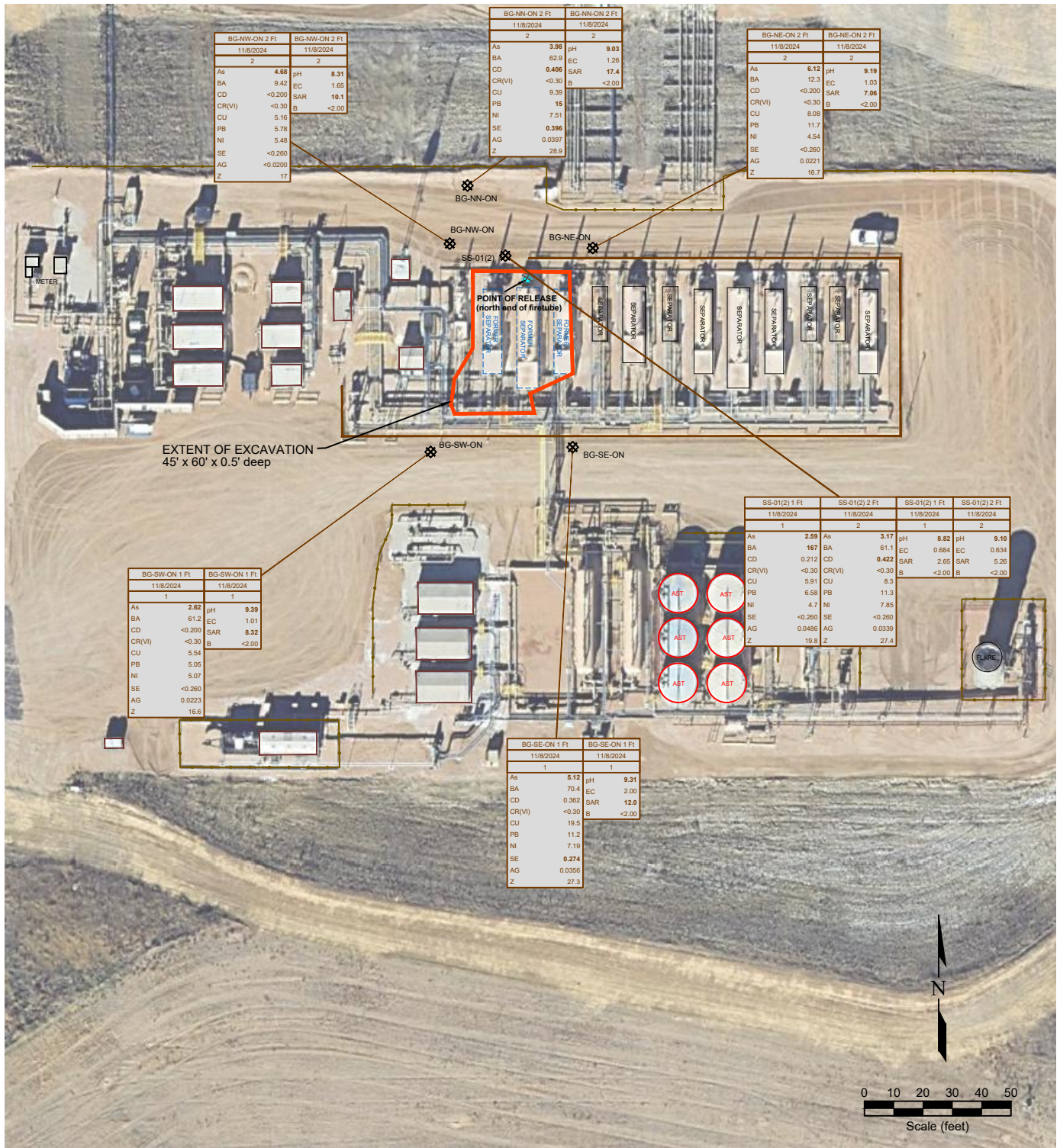


Figure 6  
BACKGROUND SAMPLE SOIL CHEMISTRY MAP

PDC Energy, Inc. ~ Gus LD Pad  
SENE Sec. 21, T1S, R67W, 6th PM  
Adams County, Colorado  
39.952212°, -104.885496°

Project No.  
C024-122

API #

Facility #

Date  
11/17/24

Remediation #

Filename  
24122QBKG2

