

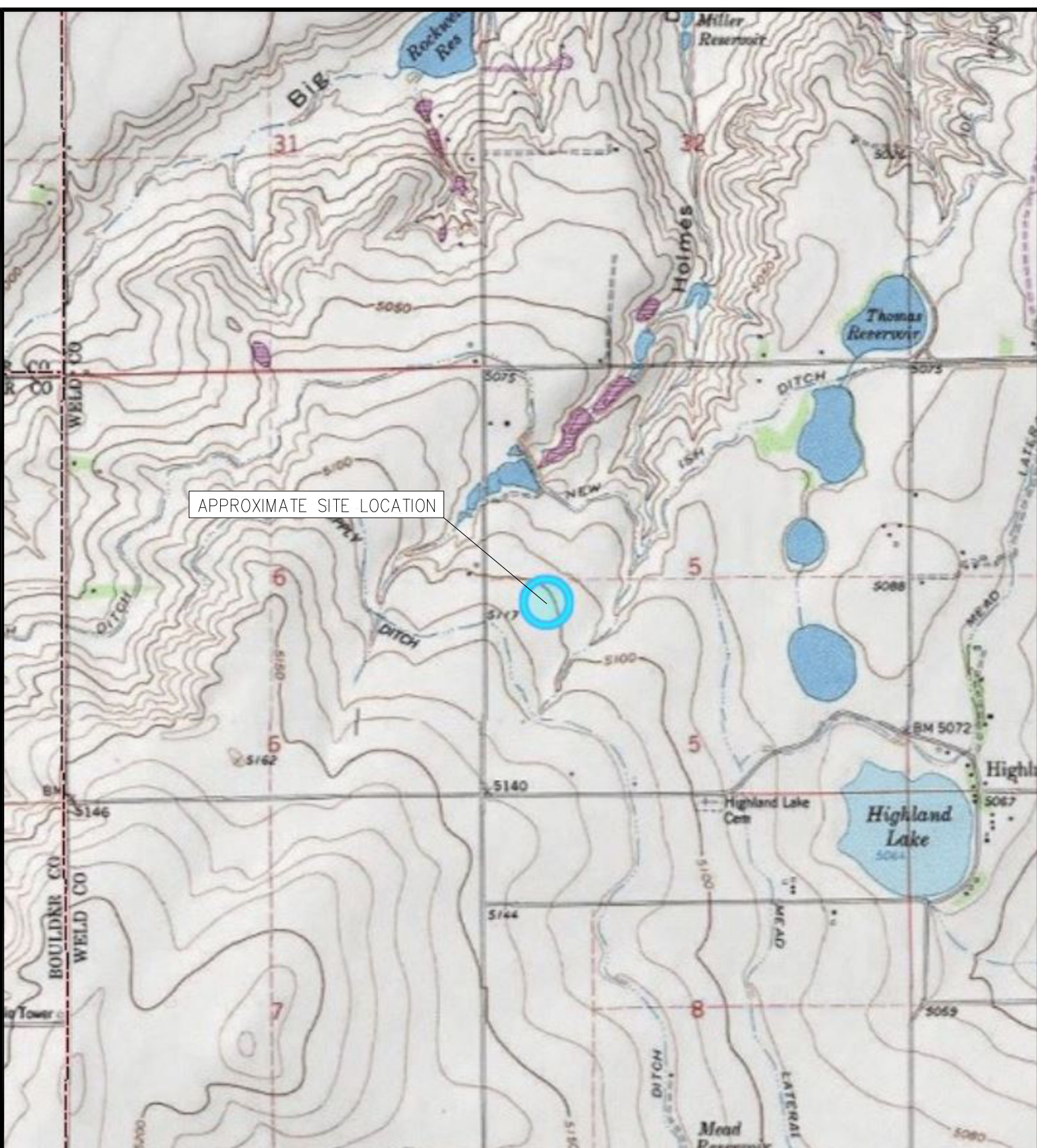


FIGURES

Figure 1: Topographic Site Location Map

Figure 2: Background Soil Sample Location Map

Figure 3: Excavation Soil Sample Location Map



APPROXIMATE SITE LOCATION

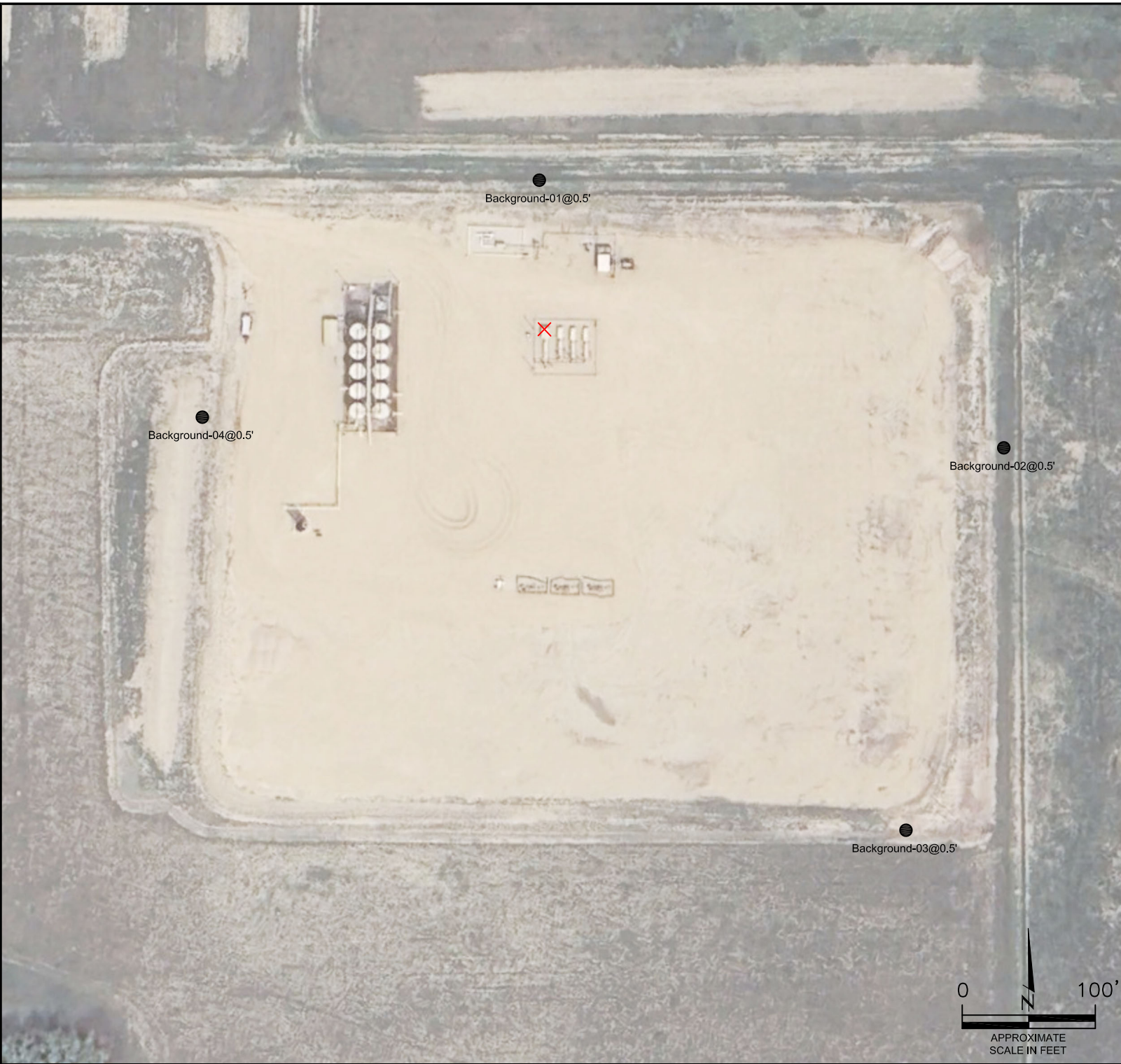


TOPOGRAPHIC SITE LOCATION MAP
 NOBLE PAD
 PW DUMPLINE RELEASE
 40.254548, -105.033597
 NW1/4 SW1/4 SEC.5 T3N R68W 6PM
 WELD COUNTY, COLORADO
 LOCATION ID 454131
 SPILL ID 488470



EAGLE
 ENVIRONMENTAL
 CONSULTING, LLC

8000 W 44th Ave, Wheat Ridge, CO 80033
 Ph: 303-433-0479 • F: 303-325-5449



- LEGEND**
- ✕ APPROXIMATE POINT OF RELEASE
 - APPROXIMATE SOIL SAMPLE LOCATION SUBMITTED FOR LABORATORY ANALYSIS

BACKGROUND: GOOGLE EARTH AERIAL IMAGERY MAY 2023

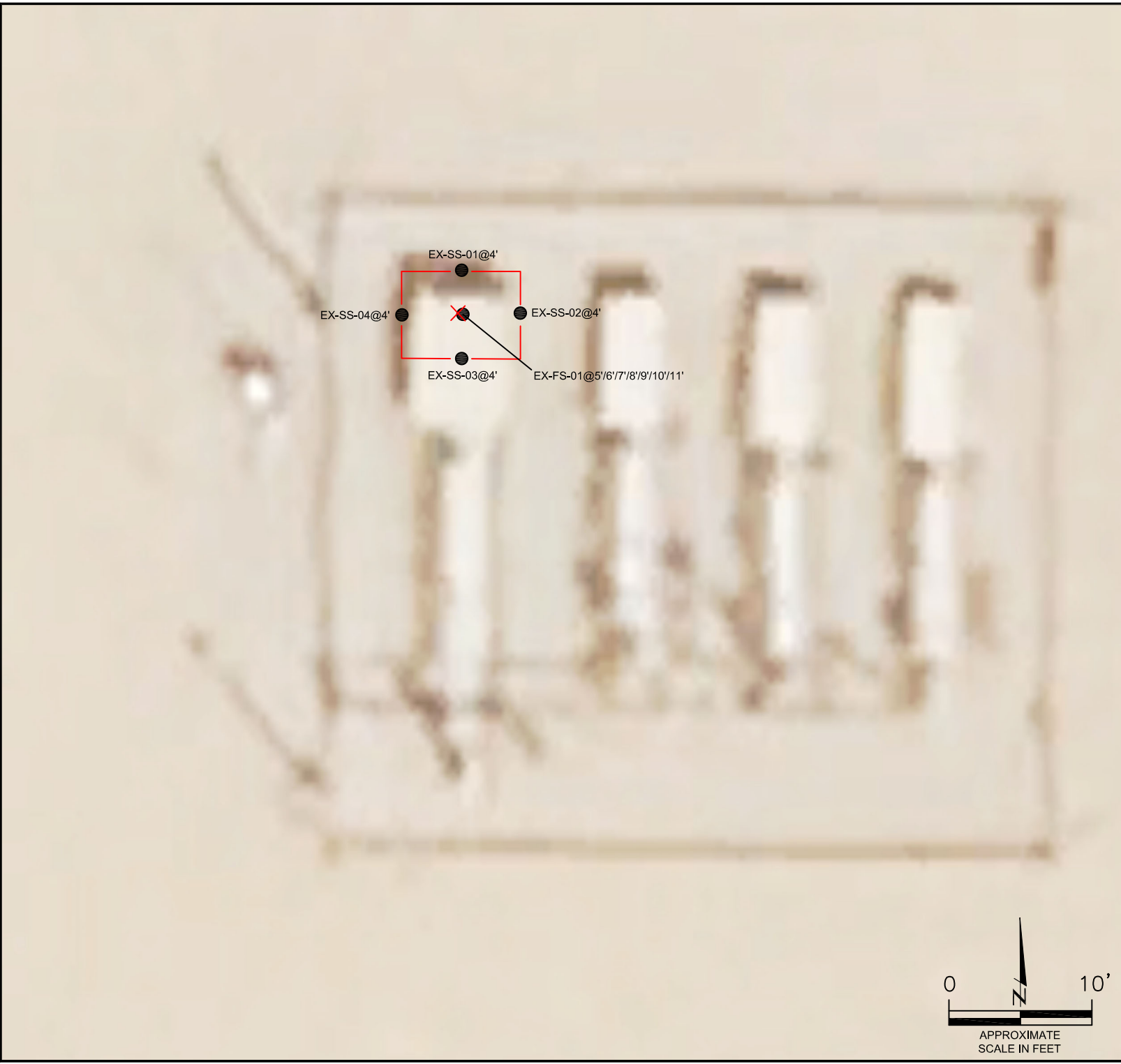
BACKGROUND SOIL SAMPLE LOCATION MAP
NOBLE PAD
PW DUMPLINE RELEASE
40.254537, -105.033619
NW1/4 SW1/4 SEC.5 T3N R68W 6PM
WELD COUNTY, COLORADO
LOCATION ID 454131
SPILL ID 488470

FIGURE NO.
2

DRAWN BY:
DAC



EAGLE
ENVIRONMENTAL
CONSULTING, LLC
8000 W 44th Ave, Wheat Ridge, CO 80033
Ph: 303-433-0479 • F: 303-325-5449



LEGEND

- APPROXIMATE EXCAVATION EXTENT
- × APPROXIMATE POINT OF RELEASE
- APPROXIMATE SOIL SAMPLE LOCATION

BACKGROUND: GOOGLE EARTH AERIAL IMAGERY MAY 2023

EXCAVATION SOIL SAMPLE LOCATION MAP

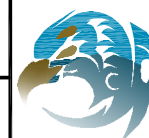
NOBLE PAD
PW DUMPLINE RELEASE
40.254537, -105.033619
NW1/4 SW1/4 SEC.5 T3N R68W 6PM
WELD COUNTY, COLORADO
LOCATION ID 454131
SPILL ID 488470

FIGURE NO.

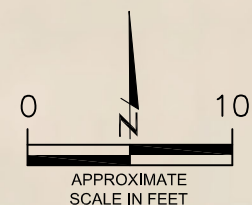
3

DRAWN BY:

DAC



EAGLE
ENVIRONMENTAL
CONSULTING, LLC
8000 W 44th Ave, Wheat Ridge, CO 80033
Ph: 303-433-0479 • F: 303-325-5449





TABLES

Table 1: Photoionization Detector Reading Summary

Table 2: Soil Analytical Results Summary

Table 3: Polycyclic Aromatic Hydrocarbons Analytical Results Summary

Table 4: Metals Analytical Results Summary

TABLE 1
PHOTOIONIZATION DETECTOR READING SUMMARY
NOBLE PAD
PW DUMPLINE RELEASE
40.254537, -105.033619
NW1/4 SW1/4 SEC.5 T3N R68W 6PM
WELD COUNTY, COLORADO
LOCATION ID 454131
SPILL ID 488470

Sample Location (Latitude, Longitude)	Date	Approximate Depth (feet)	PID Reading (ppm-v)	Lab Submission (Y/N)
EX-SS-01 @ 4' (40.254547, -105.033619)	11/11/24	4	0.9	Y
EX-SS-02 @ 4' (40.254538, -105.033606)	11/11/24	4	1.4	Y
EX-SS-03 @ 4' (40.254531, -105.033618)	11/11/24	4	0.6	Y
EX-SS-04 @ 4' (40.254538, -105.033632)	11/11/24	4	0.2	Y
EX-FS-01 @ 5' (40.254537, -105.033619)	11/11/24	5	105.6	N
EX-FS-01 @ 6' (40.254537, -105.033619)	11/11/24	6	81.4	Y
Background-01 @ 0.5' (40.254839, -105.033631)	11/11/24	0.5	1.0	Y
Background-02 @ 0.5' (40.254290, -105.032384)	11/11/24	0.5	0.9	Y
Background-03 @ 0.5' (40.253516, -105.032638)	11/11/24	0.5	1.3	Y
Background-04 @ 0.5' (40.254356, -105.034531)	11/11/24	0.5	1.0	Y
EX-FS-01 @ 7' (40.254537, -105.033619)	11/13/24	7	55.0	N
EX-FS-01 @ 8' (40.254537, -105.033619)	11/13/24	8	196.5	N
EX-FS-01 @ 9' (40.254537, -105.033619)	11/13/24	9	96.2	N
EX-FS-01 @ 10' (40.254537, -105.033619)	11/13/24	10	45.6	N
EX-FS-01 @ 11' (40.254537, -105.033619)	11/13/24	11	3.7	Y
(Y/N) = Yes or No ppm-v = parts per million by volume PID = photoionization detector				



TABLE 2
SOIL ANALYTICAL RESULTS SUMMARY
NOBLE PAD
PW DUMPLINE RELEASE
40.254537, -105.033619
NW1/4 SW1/4 SEC.5 T3N R68W 6PM
WELD COUNTY, COLORADO
LOCATION ID 454131
SPILL ID 488470

Sample Location (Latitude, Longitude)	Date	Approximate Depth (feet)	PID Reading (ppm-v)	Benzene (mg/kg)	Toluene (mg/kg)	Ethylbenzene (mg/kg)	Total Xylenes (mg/kg)	TPH-GRO (mg/kg)	TPH-DRO (mg/kg)	TPH-RRO (mg/kg)	1,2,4-TMB (mg/kg)	1,3,5-TMB (mg/kg)	Boron (mg/L)	Specific Conductance (mmhos/cm)	pH (pH units)	SAR
CECMC Table 915-1 Residential Soil Screening Levels				1.20	490	5.8	58	500			30	27	2	<4	6-8.3	<6
CECMC Table 915-1 Protection of Groundwater Soil Screening Levels				0.0026	0.69	0.78	9.9	-			0.0081	0.0087	-	-	-	-
EX-SS-01 @ 4' (40.254547, -105.033619)	11/11/24	4	0.9	<0.00200	<0.00200	<0.00200	<0.00200	<0.200	<25.0	<100	<0.00200	<0.00200	PENDING	PENDING	PENDING	PENDING
EX-SS-02 @ 4' (40.254538, -105.033606)	11/11/24	4	1.4	<0.00200	<0.00200	<0.00200	<0.00200	<0.200	<25.0	<100	<0.00200	<0.00200	PENDING	PENDING	PENDING	PENDING
EX-SS-03 @ 4' (40.254531, -105.033618)	11/11/24	4	0.6	<0.00200	<0.00200	<0.00200	<0.00200	<0.200	<25.0	<100	<0.00200	<0.00200	PENDING	PENDING	PENDING	PENDING
EX-SS-04 @ 4' (40.254538, -105.033632)	11/11/24	4	0.2	<0.00200	<0.00200	<0.00200	<0.00200	<0.200	<25.0	<100	<0.00200	<0.00200	PENDING	PENDING	PENDING	PENDING
EX-FS-01 @ 6' (40.254537, -105.033619)	11/11/24	6	81.4	0.0863	0.0334	<0.00200	0.0125	<0.200	<25.0	<100	<0.00200	<0.00200	PENDING	PENDING	PENDING	PENDING
EX-FS-01 @ 11' (40.254537, -105.033619)	11/13/24	11	3.7	0.00678	0.00374	<0.00200	<0.00200	<0.200	<25.0	<100	<0.00200	<0.00200	PENDING	PENDING	PENDING	PENDING
Background																
Background-01 @ 0.5' (40.254839, -105.033631)	11/11/24	0.5	1.0	NA	NA	NA	NA	NA	NA	NA	NA	NA	PENDING	PENDING	PENDING	PENDING
Background-02 @ 0.5' (40.254290, -105.032384)	11/11/24	0.5	0.9	NA	NA	NA	NA	NA	NA	NA	NA	NA	PENDING	PENDING	PENDING	PENDING
Background-03 @ 0.5' (40.253516, -105.032638)	11/11/24	0.5	1.3	NA	NA	NA	NA	NA	NA	NA	NA	NA	PENDING	PENDING	PENDING	PENDING
Background-04 @ 0.5' (40.254356, -105.034531)	11/11/24	0.5	1.0	NA	NA	NA	NA	NA	NA	NA	NA	NA	PENDING	PENDING	PENDING	PENDING
CECMC = Colorado Energy & Carbon Management Commission SAR = Sodium Adsorption Ratio TPH-GRO = Total Petroleum Hydrocarbons - Gasoline Range Organics TPH-DRO = Total Petroleum Hydrocarbons - Diesel Range Organics TPH-RRO = Total Petroleum Hydrocarbons - Residual Range Organics mg/kg = milligrams per kilogram PID = Photoionization Detector 1,2,4-TMB = 1,2,4-Trimethylbenzene 1,3,5-TMB = 1,3,5-Trimethylbenzene mg/L = milligrams per liter ppm-v = parts per million by volume mmhos/cm = millimhos per centimeter NA = Not Analyzed Values presented with a less than symbol (<) did not contain concentrations at or above the laboratory reporting limit. Values presented in BOLD contained concentrations exceeding CECMC Table 915-1 Protection of Groundwater Soil Screening Level Limits but within Background results. Values presented in BOLD contained concentrations exceeding CECMC Table 915-1 Protection of Groundwater Soil Screening Level Limits and Background results where applicable.																

TABLE 3
POLYCYCLIC AROMATIC HYDROCARBONS ANALYTICAL RESULTS SUMMARY
NOBLE PAD
PW DUMPLINE RELEASE
40.254537, -105.033619
NW1/4 SW1/4 SEC.5 T3N R68W 6PM
WELD COUNTY, COLORADO
LOCATION ID 454131
SPILL ID 488470

Sample Location (Latitude, Longitude)	Date	Approximate Depth (feet)	PID Reading (ppm-v)	1-Methyl- naphthalene (mg/kg)	2-Methyl- naphthalene (mg/kg)	Acenaphthene (mg/kg)	Anthracene (mg/kg)	Benzo(a)- anthracene (mg/kg)	Benzo(a)- pyrene (mg/kg)	Benzo(b)- fluoranthene (mg/kg)	Benzo(k)- fluoranthene (mg/kg)	Chrysene (mg/kg)	Dibenzo(a,h)- anthracene (mg/kg)	Fluoranthene (mg/kg)	Fluorene (mg/kg)	Indeno(1,2,3- cd)-pyrene (mg/kg)	Naphthalene (mg/kg)	Pyrene (mg/kg)
CECMC Table 915-1 Residential Soil Screening Levels				18	24	360	1,800	1.1	0.11	1.1	11	110	0.11	240	240	1.1	2	180
CECMC Table 915-1 Protection of Groundwater Soil Screening Levels				0.006	0.019	0.55	5.8	0.011	0.24	0.3	2.9	9	0.096	8.9	0.54	0.98	0.0038	1.3
EX-SS-01 @ 4' (40.254547, -105.033619)	11/11/24	4	0.9	PENDING	PENDING	PENDING	PENDING	PENDING	PENDING	PENDING	PENDING	PENDING	PENDING	PENDING	PENDING	PENDING	PENDING	PENDING
EX-SS-02 @ 4' (40.254538, -105.033606)	11/11/24	4	1.4	PENDING	PENDING	PENDING	PENDING	PENDING	PENDING	PENDING	PENDING	PENDING	PENDING	PENDING	PENDING	PENDING	PENDING	PENDING
EX-SS-03 @ 4' (40.254531, -105.033618)	11/11/24	4	0.6	PENDING	PENDING	PENDING	PENDING	PENDING	PENDING	PENDING	PENDING	PENDING	PENDING	PENDING	PENDING	PENDING	PENDING	PENDING
EX-SS-04 @ 4' (40.254538, -105.033632)	11/11/24	4	0.2	PENDING	PENDING	PENDING	PENDING	PENDING	PENDING	PENDING	PENDING	PENDING	PENDING	PENDING	PENDING	PENDING	PENDING	PENDING
EX-FS-01 @ 6' (40.254537, -105.033619)	11/11/24	6	81.4	PENDING	PENDING	PENDING	PENDING	PENDING	PENDING	PENDING	PENDING	PENDING	PENDING	PENDING	PENDING	PENDING	PENDING	PENDING
EX-FS-01 @ 11' (40.254537, -105.033619)	11/13/24	11	3.7	PENDING	PENDING	PENDING	PENDING	PENDING	PENDING	PENDING	PENDING	PENDING	PENDING	PENDING	PENDING	PENDING	PENDING	PENDING
CECMC = Colorado Energy & Carbon Management Commission PID = Photoionization Detector ppm-v = parts per million by volume mg/kg = milligrams per kilogram Values presented with a less than symbol (<) did not contain concentrations at or above the laboratory minimum detection levels. Values presented in BOLD contained concentrations exceeding CECMC Table 915-1 Protection of Groundwater Soil Screening Level Limits.																		

TABLE 4
METALS ANALYTICAL RESULTS SUMMARY
NOBLE PAD
PW DUMPLINE RELEASE
40.254537, -105.033619
NW1/4 SW1/4 SEC.5 T3N R68W 6PM
WELD COUNTY, COLORADO
LOCATION ID 454131
SPILL ID 488470

Sample Location (Latitude, Longitude)	Date	Approximate Depth (feet)	Arsenic (mg/kg)	Barium (mg/kg)	Cadmium (mg/kg)	Hexavalent Chromium (mg/kg)	Copper (mg/kg)	Lead (mg/kg)	Nickel (mg/kg)	Selenium (mg/kg)	Silver (mg/kg)	Zinc (mg/kg)
CECMC Table 915-1 Residential Soil Screening Levels			0.68**	15,000	71	0.3*	3,100	400	1,500	390	390	23,000
CECMC Table 915-1 Protection of Groundwater Soil Screening Levels			0.29**	82***	0.38	0.00067*	46	14****	26	0.26*****	0.8	370
Local Cleanup Level			8.83**	211***	-	-	-	18.6****	-	0.552*****	-	-
EX-SS-01 @ 4' (40.254547, -105.033619)	11/11/24	4	5.20**	160***	0.165	PENDING	11.0	10.7	13.4	0.279*****	<0.0846	46.3
EX-SS-02 @ 4' (40.254538, -105.033606)	11/11/24	4	5.62**	169***	0.180	PENDING	12.3	11.6	14.7	0.287*****	<0.0889	50.8
EX-SS-03 @ 4' (40.254531, -105.033618)	11/11/24	4	5.32**	153***	0.185	PENDING	12.5	11.5	15.4	0.261*****	<0.0852	51.7
EX-SS-04 @ 4' (40.254538, -105.033632)	11/11/24	4	5.39**	156***	0.170	PENDING	11.8	11.4	14.6	0.288*****	<0.0988	49.7
EX-FS-01 @ 6' (40.254537, -105.033619)	11/11/24	6	6.97**	168***	0.134	PENDING	11.8	12.2	14.6	0.371*****	<0.0920	50.9
EX-FS-01 @ 11' (40.254537, -105.033619)	11/13/24	11	4.25**	26.5	<0.0889	PENDING	<8.89	7.68	7.70	<0.231	<0.0889	<32.9
Background												
Background-01 @ 0.5' (40.254839, -105.033631)	11/11/24	0.5	6.40**	151***	0.243	PENDING	13.9	14.9****	16.0	0.409*****	<0.0945	62.7
Background-02 @ 0.5' (40.254290, -105.032384)	11/11/24	0.5	6.86**	161***	0.252	PENDING	15.20	14.3****	17.8	0.403*****	<0.0844	68.8
Background-03 @ 0.5' (40.253516, -105.032638)	11/11/24	0.5	7.07**	169***	0.265	PENDING	14.9	14.1****	17.7	0.392*****	<0.0882	65.5
Background-04 @ 0.5' (40.254356, -105.034531)	11/11/24	0.5	6.75**	165***	0.259	PENDING	14.3	14.4****	17.2	0.442*****	<0.0992	67.0
CECMC = Colorado Energy & Carbon Management Commission mg/kg = milligrams per kilogram Values presented with a less than symbol (<) did not contain concentrations at or above the laboratory reporting limit. Values presented in BOLD contained concentrations exceeding CECMC Table 915-1 Protection of Groundwater Soil Screening Level Limits but within Background results Values presented in BOLD contained concentrations exceeding CECMC Table 915-1 Protection of Groundwater Soil Screening Level Limits and Background results *Achievable practical quantitative limits for Hexavalent Chromium in soils is in the range of 0.1 to 1 mg/kg. **Arsenic is naturally occurring in Colorado. Local Cleanup Level (8.83 mg/kg) is 1.25 x Background (7.07 mg/kg). ***Barium is naturally occurring in Colorado. Local Cleanup Level (211 mg/kg) is 1.25 x Background (169 mg/kg). ****Lead is naturally occurring in Colorado. Local Cleanup Level (18.6 mg/kg) is 1.25 x Background (14.9 mg/kg). *****Selenium is naturally occurring in Colorado. Local Cleanup Level (0.552 mg/kg) is 1.25 x Background (0.442 mg/kg).												



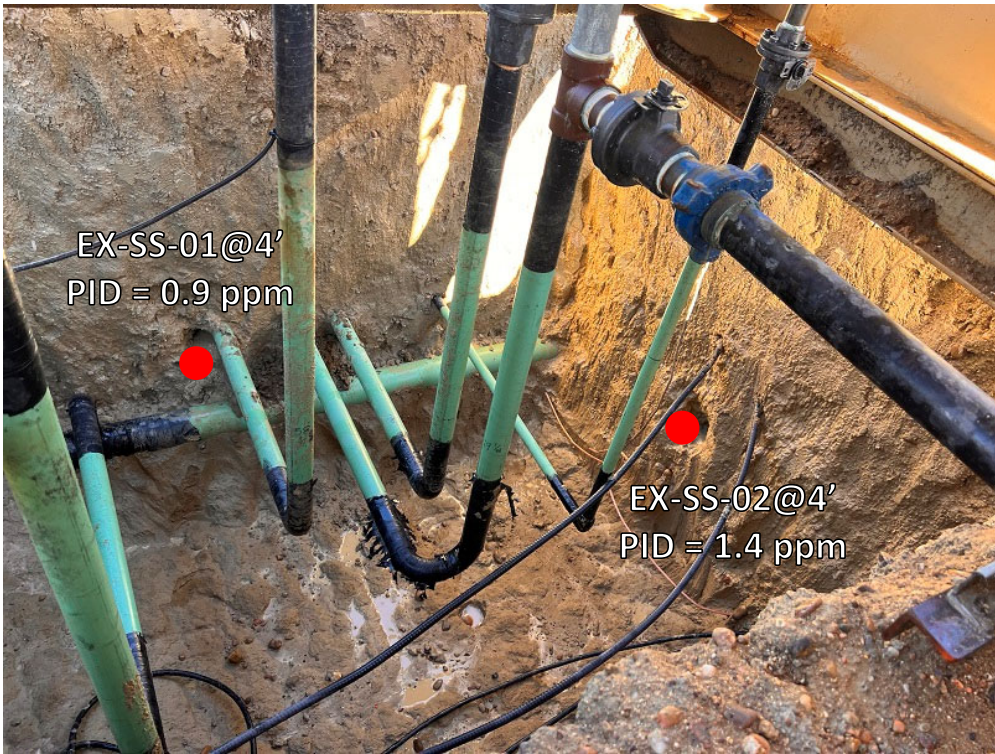
ATTACHMENT A

Photo Log

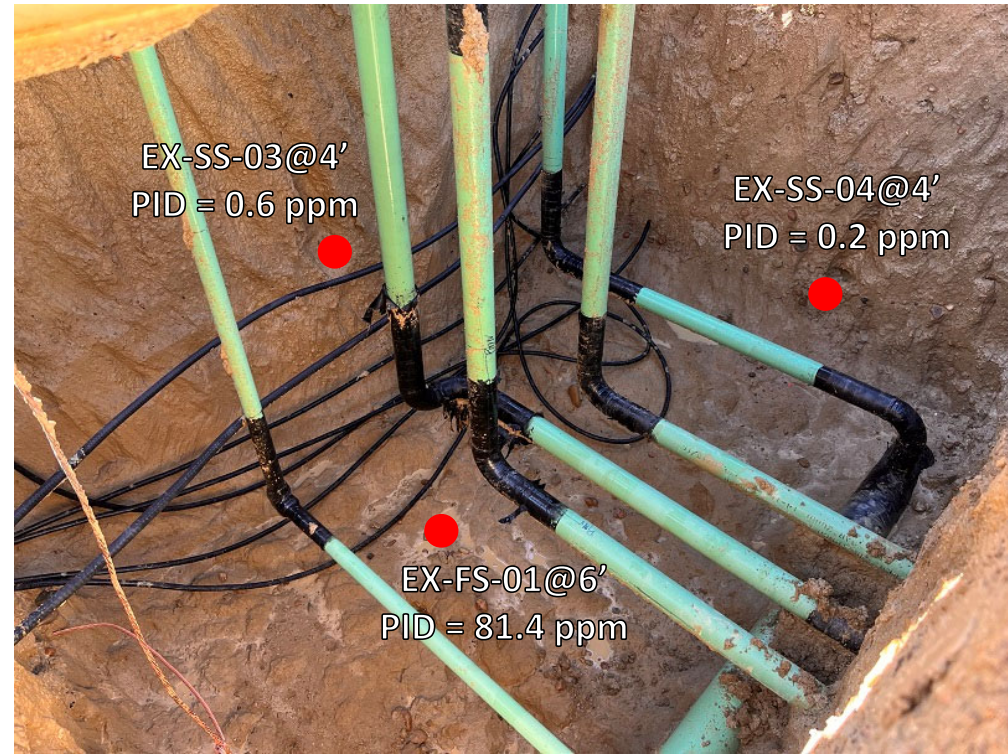
NOBLE PAD
PW DUMPLINE RELEASE
40.254548, -105.033597
NW1/4 SW1/4 SEC.5 T3N R68W 6PM
WELD COUNTY, COLORADO
LOCATION ID 454131
SPILL ID 488470



Assessment – 11/11/24



Looking NE
No petroleum hydrocarbon staining or odor observed



Looking SW
No petroleum hydrocarbon staining or odor observed

Assessment – 11/13/24



Looking SE
No petroleum hydrocarbon staining or odor observed