

RECEIVED

JUL 26 1973

COLORADO OIL & GAS CONS. COMM.



013-06005

GEOLOGICAL REPORT
EXETER, CLAUD B. HAMILL
and
X O EXPLORATION, INC.

DEEPE NO. 11-22

Section 22

NE SW

Township 1 North, Range 69 West
Boulder County, Colorado

DVR	
FJP	
HHM	✓
JAM	
LD	

Stanley A. Mollerstuen
Wellsite Geologist



DEVIATION

1. 500'	1/4°	6. 3912'	1°
2. 1035'	1/2°	7. 4211'	1/4°
3. 1700'	1/2°	8. 4631'	1°
4. 2517'	3/4°	9. 5084'	1°
5. 3209'	1°	10. 5352'	1°

CHRONOLOGICAL DRILLING REPORT

March 26, 1973 Rig up and drill surface hole to 160'. Set 148.13' of 8-5/8" casing at 156.13' with 175 sacks cement. Plug down at 7:30 P.M. Geologist on location to check surface hole samples. Two sets of samples caught at 10' intervals for mineral owners.

March 27, 1973 Drilled out at 12:30 A.M. Drilling at 750' at 7 A.M. Trip for Bit #2 at 1194'.

March 28, 1973 Trip for Bit #3 at 2517'. Drilling at 2910' at 7 A.M.

March 29, 1973 Trip for Bit #4 at 3912'. Drilling at 4200' at 7 A.M. Circulate samples at 4211'. Cut Core No. 1 (Parkman) from 4211-4272'. Trip in with Bit #5 at 4272'.

March 30, 1973 Drilling at 4590' at 7 A.M. Circulate samples at 4631'. Cut core No. 2 (Sussex) from 4631-4688'. Trip in with Bit #6 at 4682'.

March 31, 1973 Drilling at 4925' at 7 A.M. Bit locked up at 4940'. Left 3 cones in hole. Made two trips in with magnet and junk basket recovered junk. Trip in with Bit #7 at 4940' (?)

April 1, 1973 Drilled to 4970'. Some iron in hole. Trip for bit #8 at 4970'. Drilling at 4995' at 7 A.M. Circulate for samples at 5084'. Cut core #3 (Shannon) 5084-5144'.

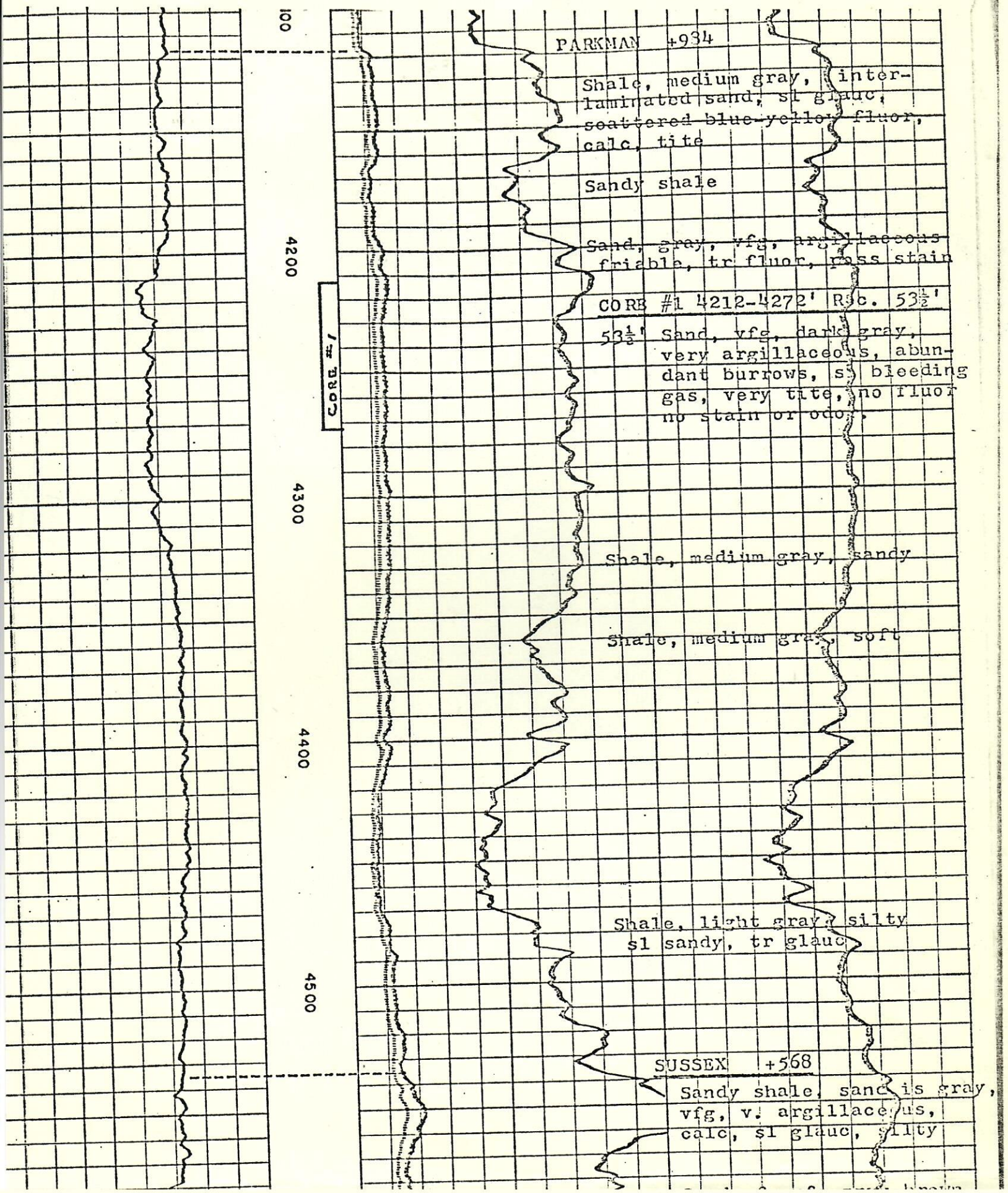
April 2, 1973 Finish cutting core #3. Trip in with Bit #9 at 5144'. Lost circulation at 5157'. Mixed 4 sacks hulls and regained circulation after 3-1/4 hours. Commenced drilling at 8:45 A.M. Reached 5352'(T.D.) at 5:15 P.M. Circulate and trip out for logging.

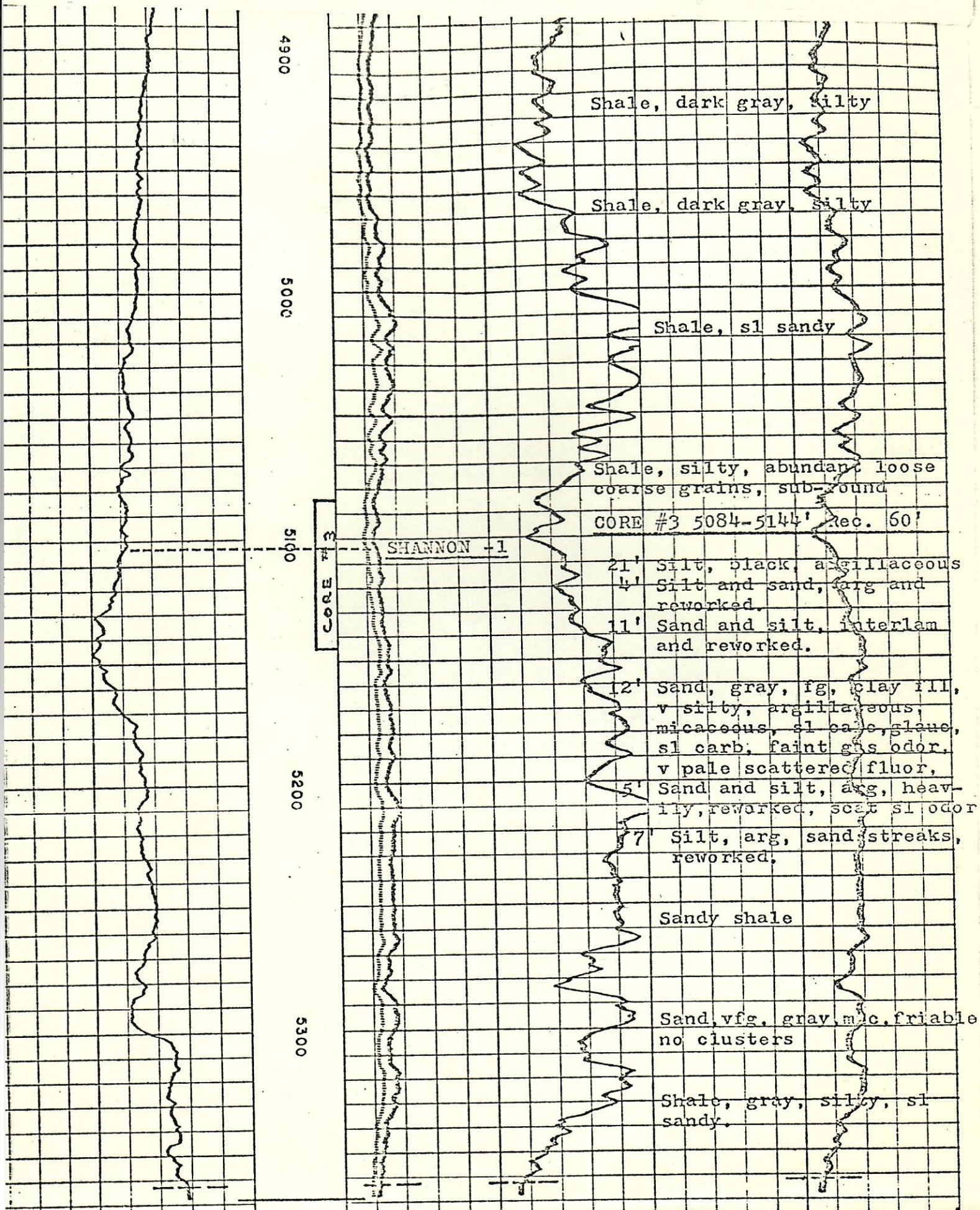
April 3, 1973 Finish logging at 3 A.M. Received plugging instructions from Jim McKee, Colorado State Oil and Gas Commission.

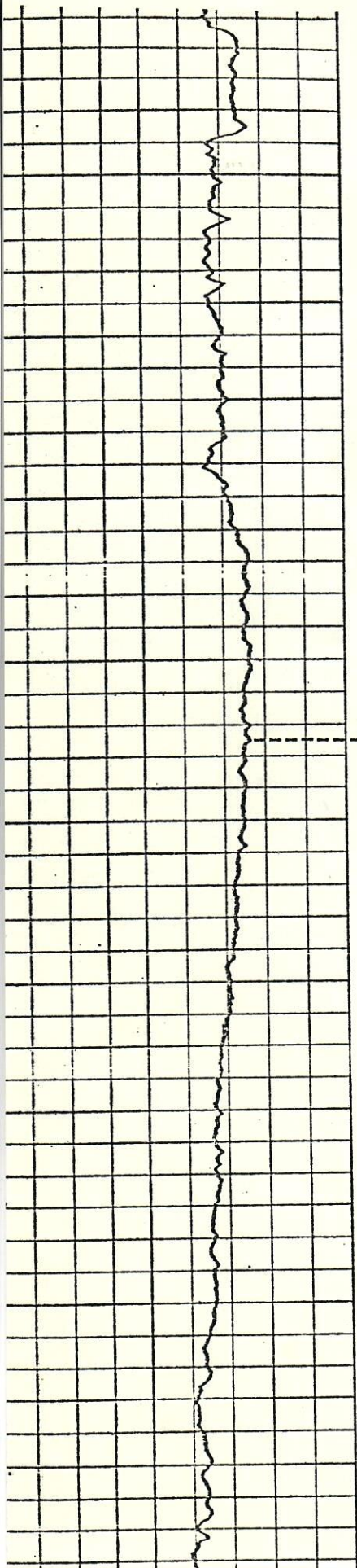
SAMPLE DESCRIPTION OF SURFACE HOLE

0 - 4'	Soil
4 -30'	Sand, medium coarse grained, yellow.
30 -40'	Sand and yellow clay
40 -70'	Yellow clay
70-156'	Shale gray

See attached electric log for sample description of zones of interest and core descriptions.







FOO

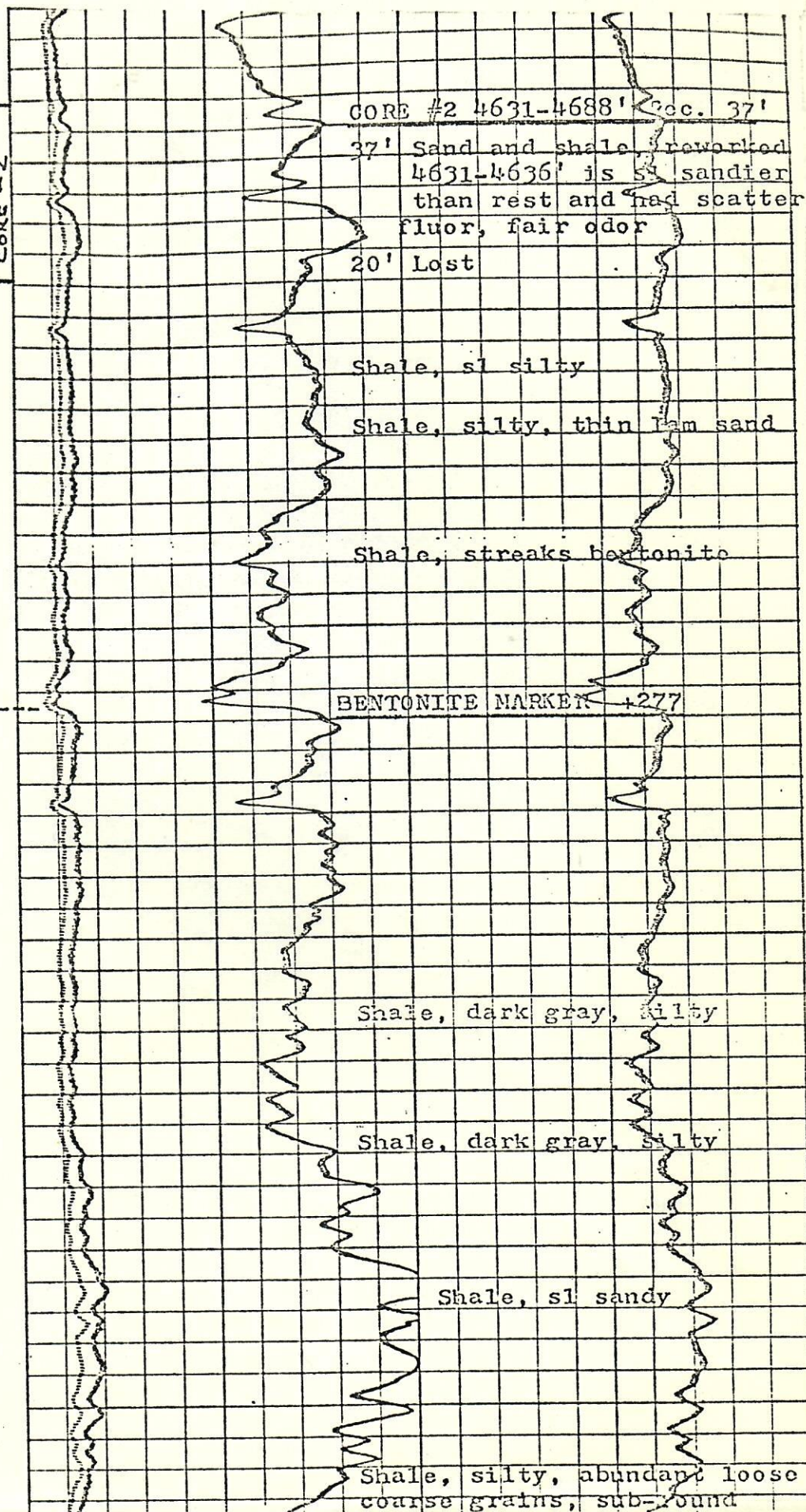
4700

4800

4900

5000

CORE #2



FORMATION TOPS

<u>Formation</u>	<u>Log Tops</u>	<u>K.B. 5102'</u> <u>Datum</u>
Parkman	4118'	+ 984
Sussex	4534'	+ 568
Bentonite Marker	4825'	+ 277
Shannon	5103'	- 1
Total Depth	5352' Driller	- 250
	5369' Logger	

BIT RECORD

<u>No.</u>	<u>Size</u>	<u>Make</u>	<u>Type</u>	<u>Depth Out</u>	<u>Footage</u>	<u>Hours</u>
1	7-7/8	Smith	DTJ	1194'	1034'	9-1/2
2	7-7/8	Reed	YT3-J	2517'	1323'	12-3/4
3	7-7/8	Smith	DTJ	3912'	1395'	17
4	7-7/8	Smith	DTJ	4211'	299'	4-1/2
4A	7-7/8	Chris	Diamond	4272'	60'	4-1/2
5	7-7/8	Smith	DTJ	4631'	669'	13-1/2
5A	7-7/8	Chris	Diamond	4688'	57'	8
6	7-7/8	Reed	YT3J	4940'	252'	8-3/4
(Lost 3 cones from Bit #6, 2 trips with magnet and junk basket)						
7	7-7/8	Hughes	CICJ	4970'	30'	2-3/4
8	7-7/8	Smith	DTJ	5084'	114'	6-3/4
8A	7-7/8	Chris	Diamond	5144'	60'	7
9	7-7/8	Smith	DTJ	5352'	208'	8-1/4

OPERATOR: Exeter, Claud B. Hamill and
X O Exploration, Inc.

LEASE: No. 11-22 Deepe

LOCATION: Section 22, Township 1 North, Range 69
West, 1980' FSL and 1850' FWL (NE SW)
Boulder County, Colorado

ELEVATION: Ground 5094' Kelly Bushing 5102'

CONTRACTOR: Exeter Drilling Company

TOOL PUSHER: Bob Flinn Rig #14

SPUDDED: March 26, 1973

SURFACE CASING: Set 148.13' of 8-5/8" at 156.13' K.B.
with 175 sacks cement. Plug down at
7:30 P.M. March 26, 1973. Drilled plug
at 12:30 A.M. March 27, 1973.

DRILLING COMPLETED: April 2, 1973 5:15 P.M.

STATUS: Plugged and Abandoned

LOG PROGRAM: Dresser-Atlas
Induction Electrolog 156-5364'
Densilog 3970-5369'

CORES:

1. Parkman 4212-4272'
2. Sussex 4631-4688'
3. Shannon 5084-5144'

(Log indicates downhole correction
of approximately 16' necessary)

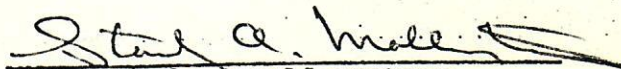
DRILL STEM TEST: None

TOTAL DEPTH: Driller 5352'
Logger 5369'

GEOLOGICAL RESUME

The No. 1 Deepe was drilled to evaluate the Parkman, Sussex and Shannon formations. It was determined from samples, cores and logs that all zones were lacking in the reservoir characteristics of sufficient porosity and permeability, necessary to establish commercial production. Approval to plug and abandon was obtained from all participants April 2, 1973.

Samples have been deposited with the American Stratigraphic Company in Denver, Colorado


Stanley A. Mollerstuen
Wellsite Geologist