







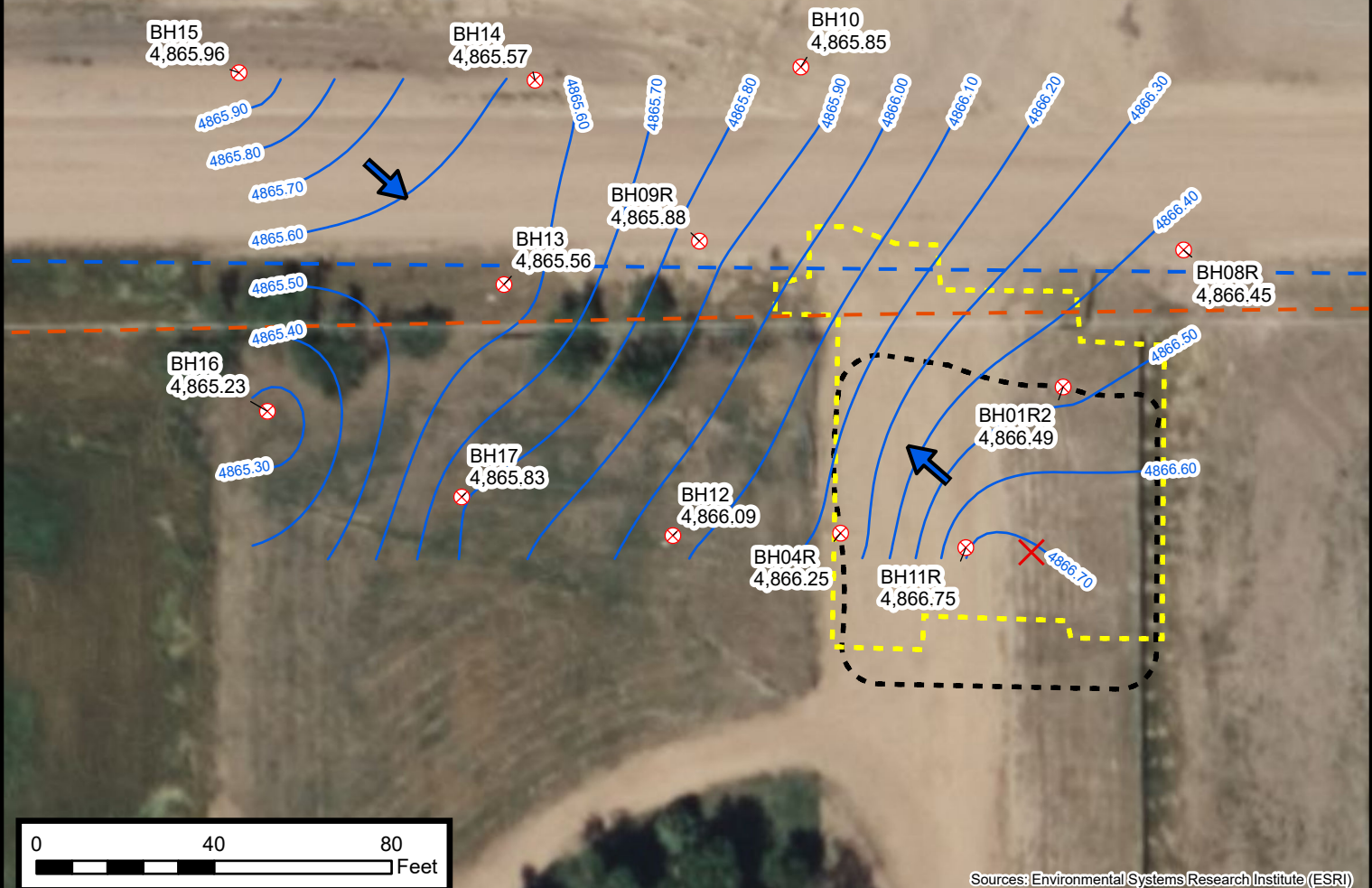


Legend

-  Active Monitoring Well
-  Release Point
-  Buried Central Weld County Water District Line
-  Overhead Power Lines
-  Relative Groundwater Elevation Contour
-  Final 2016 Excavation Extent
-  Final 2019 Excavation Extent
-  Surveyed Groundwater Flow Direction

Notes
Contour Interval = 0.1 Feet



Sources: Environmental Systems Research Institute (ESRI)



Groundwater Elevation Contour Map (9/20/2024)

Tuttle L 16-7
Kerr-McGee Oil and Gas Onshore, LP
NENW SEC 17-T3N-R66W
Weld County, Colorado

Project Number: 09A1662071

FIGURE
2