

**RADIAL BOND LOG
WITH GAMMA RAY**

ENERGY SERVICES

Comp. ANADARKO PETROLEUM CORP
 Well MEAD PLACE 20-22
 Field WATTENBERG
 Co WELD
 State CO

Company **ANADARKO PETROLEUM CORP**
 Well **MEAD PLACE 20-22**
 Field **WATTENBERG**
 County **WELD** State **CO**

Location: API # : 05-123-30063
 SEC 22 TWP 3N RGE 68W
 NW/SW
 PERFORM

Permanent Datum GL
 Log Measured From KB 15' Above Perm. Datum
 Drilling Measured From KB
 Elevation 4979'
 K.B. 4994'
 D.F. 4993'
 G.L. 4979'

Date of Service	AUG 22ND, 2024			
Run Number	ONE			
Depth Driller or PBTD	7915'			
Depth Logger	4610'			
Bottom Log Interval	4607'			
Top Log Interval	SURFACE			
Open Hole Size	7.875"			
Type Fluid	WATER			
Fluid Level	SURFACE			
Fluid Density	8.3#			
Max. Recorded Temperature	128° F			
Max. Wellhead Pressure	ZERO			
Wellhead Connection	7 1/16" 5K			
Estimated Cement Top	SEE LOG			
Unit Number	5074			
Wireline Size	9/32"			
Location	PLATTEVILLE, CO			
Recorded By	GREG JACKSON			
Witnessed By	JEFF CRISLER			
Tubing Record	Size	W/Ft	Top	Bottom
Surface Casing	8-5/8	24#	SURFACE	551'
Production Casing	4-1/2	11.5#	SURFACE	7903'
Liner Record				

>>> Fold Here >>>

All interpretations are opinions based on inferences from electrical or other measurements and Pioneer Wireline Services, LLC cannot and does not guarantee the accuracy or correctness of any interpretation, and Pioneer Wireline Services, LLC will not be liable or responsible for any loss, costs, damages, or expenses incurred or sustained by anyone resulting from any interpretation made by any of our officers, agents or employees.

Comments

N/A DENOTES NOT AVAILABLE OR NON-APPLICABLE.
 LOG CORRELATED TO EXISTING LOG ON STATE SITE.

THANK YOU FOR USING PIONEER ENERGY SERVICES!

Your Pioneer Energy Services Crew	Tool Data - Services	Serial Number
Engineer: G. JACKSON Operator: M. LLAMAS Operator: L. CASTILLO Operator:	BOND GAMMA RAY/CCL	

Sensor	Offset (ft)	Schematic	Description	Length (ft)	O.D. (in)	Weight (lb)
			Cable Head-Titan_144 1 7/16" Titan Cable Head	1.03	1.44	2.00
			Centralizer-275 Probe 2 3/4" Probe Adjustable Spring Centralizer	2.88	2.75	15.00
WVFS8	12.09		PROBE-RBT-DIGITAL-RBL-DC (FW1304-34) Probe 2 3/4" Radii Bond-Corrosion Package	8.75	2.75	100.00
WVFS7	12.09					
WVFS6	12.09					
WVFS5	12.09					
WVFS4	12.09					
WVFS3	12.09					
WVFS2	12.09					
WVFS1	12.09					
WVFCAL	12.09					
WVF3FT	12.09					
WVF5FT	11.09					
HEADVOLT	7.90					
			Centralizer-275 Probe 2 3/4" Probe Adjustable Spring Centralizer	2.88	2.75	15.00
CCL	4.20					
GCT_TEMP	3.41					
GR	2.83		PROBE-GR/CCL-DIGITAL-275 Probe GCT (140181) Probe 2 3/4" Gamma Ray/Temp/CCL	4.69	2.75	60.00
			Bullnose-PROBE Probe Go Pin Pressure Cap	0.33	1.38	1.00

Dataset: oxy_mead place 20-22_rcbl_8-22-24.db: field/well/run1/pass2
 Total length: 20.56 ft
 Total weight: 193.00 lb
 O.D.: 2.75 in

Log Variables

Database: C:\ProgramData\Warrior\Data\oxy_mead place 20-22_rcbl_8-22-24.db
 Dataset: field/well/run1/pass2/_vars_

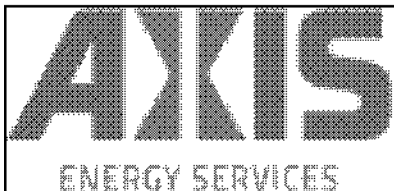
Top - Bottom

BOREID in 7.875	BOTTEMP degF 100	CASEOD in 4.5	CASETHCK in 0	CASEWGHT lb/ft 11.6	MAXAMPL mV 81.2	MINAMPL mV 1
MINATTN db/ft 0.08	PERFS No	PPT usec 0	SRFTEMP degF 0	TDEPTH ft 0		

Variable Description

BOREID : Borehole I.D.
 BOTTEMP : Bottom Hole Temperature
 CASEOD : Casing O.D.
 CASETHCK : Casing Thickness
 CASEWGHT : Casing Weight
 MAXAMPL : Maximum Amplitude

MINAMPL : Minimum Amplitude
 MINATTN : Minimum Attenuation
 PERFS : Perforation Flag
 PPT : Predicted Pipe Time
 SRFTEMP : Surface Temperature
 TDEPTH : Total Depth

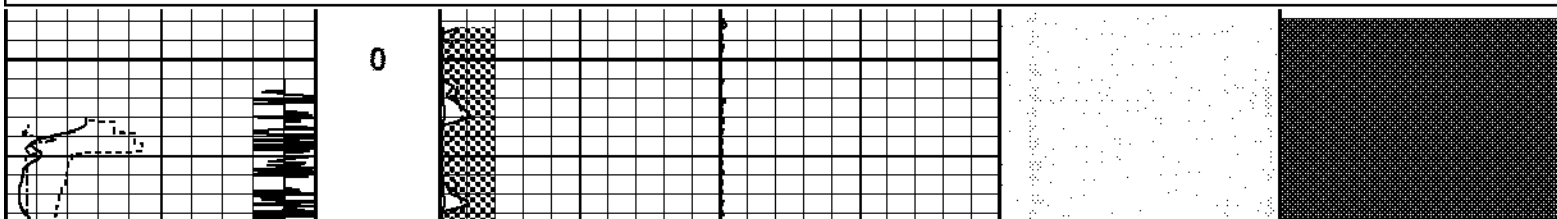


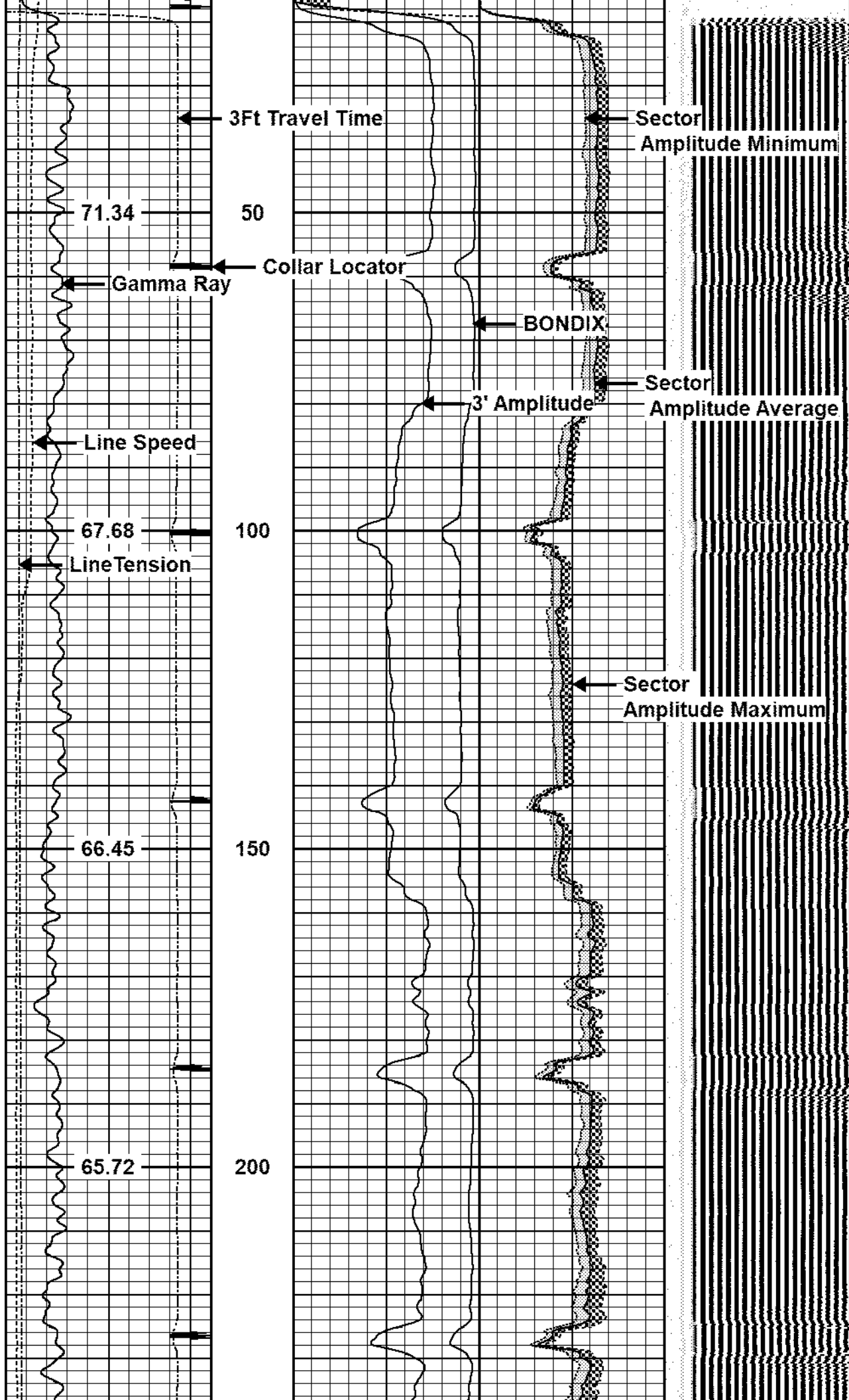
MAIN LOG

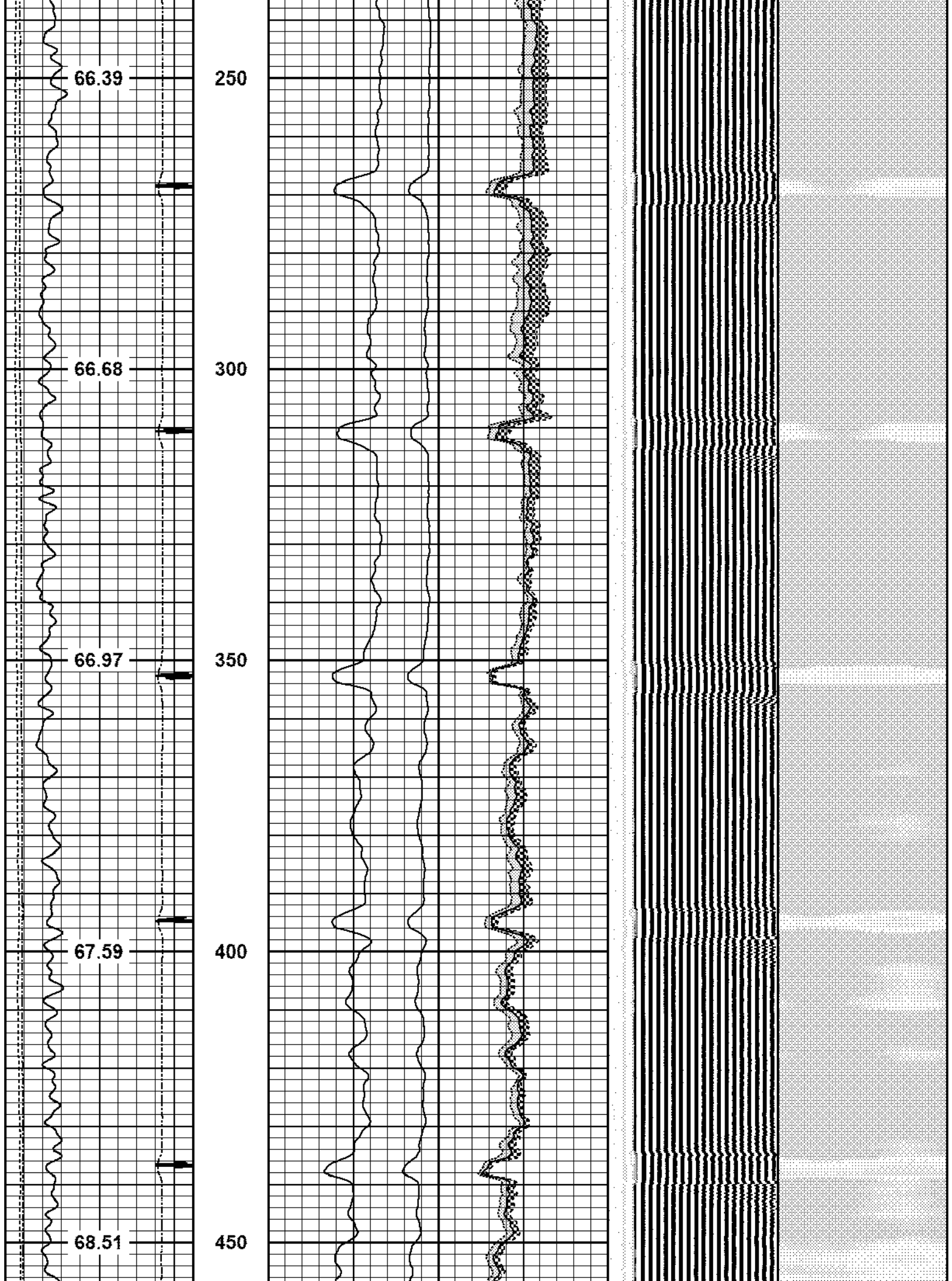
ZERO PSI APPLIED AT SURFACE

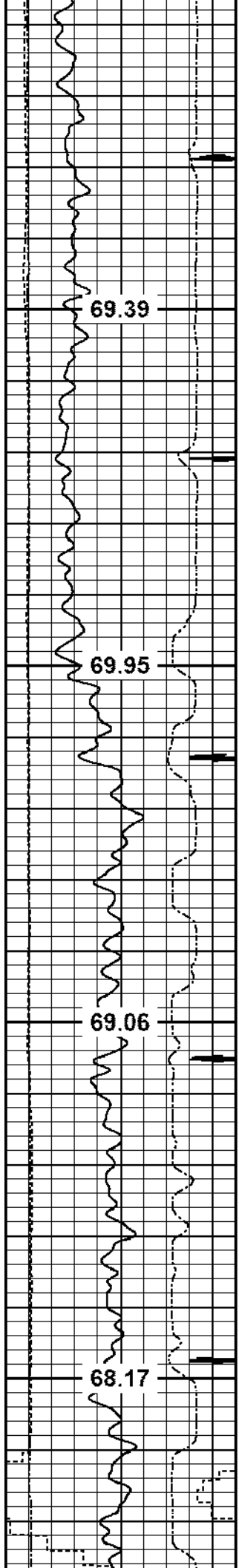
Database File: oxy_mead place 20-22_rcbl_8-22-24.db
 Dataset Pathname: pass2
 Presentation Format: pinr_scbl
 Dataset Creation: Thu Aug 22 14:51:06 2024
 Charted by: Depth in Feet scaled 1:240

3Ft Travel Time 575 (usec) 175	3' Amplitude 0 (mV) 100	Sector Amplitude Average	VDL 200 (usec) 1200	1 Sector Map 8
-9 Collar Locator 1	3' Amplified Amplitude X 5	0 150		
Gamma Ray 0 (GAPI) 150	0 (mV) 20	Sector Amplitude Maximum		
Line Tension 0 (lb) 2000	1 BONDIX 0 0	0 150		
Line Speed -100 (ft/min) 100		Sector Amplitude Minimum		
TEMP (degF)		0 150		







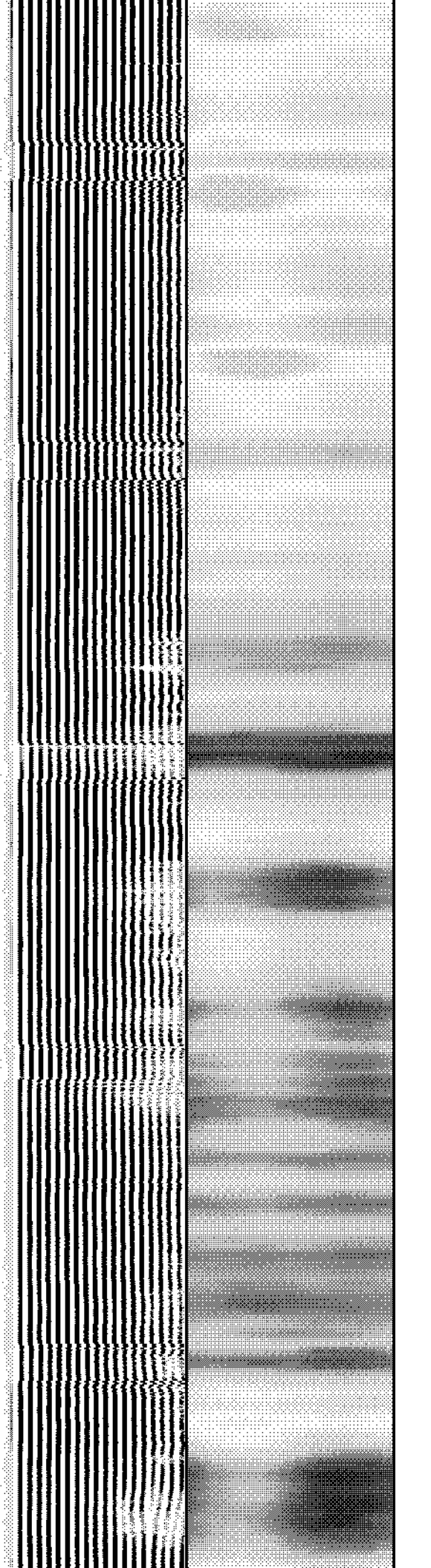
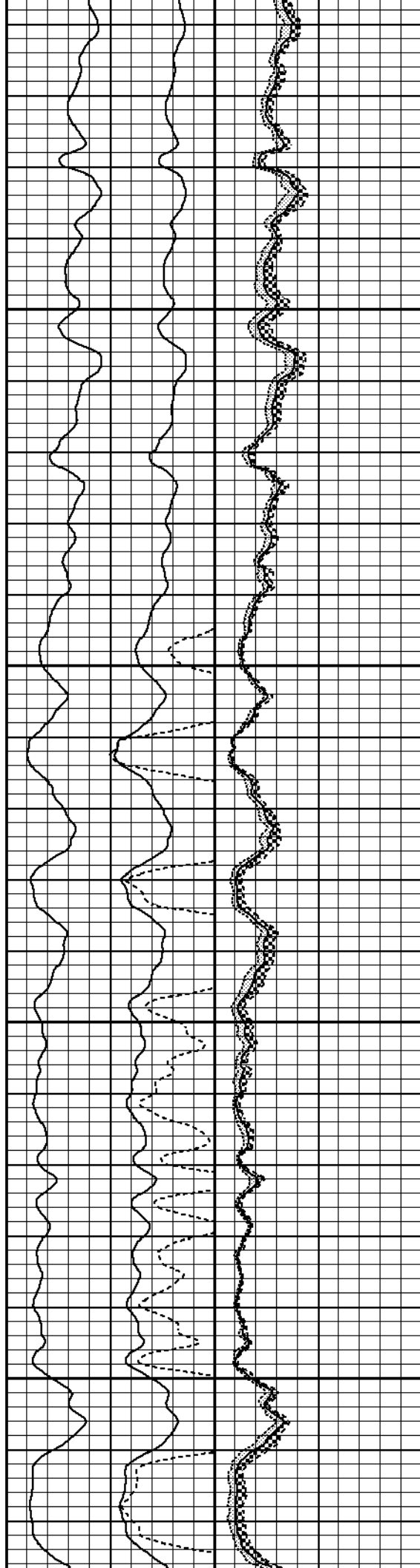


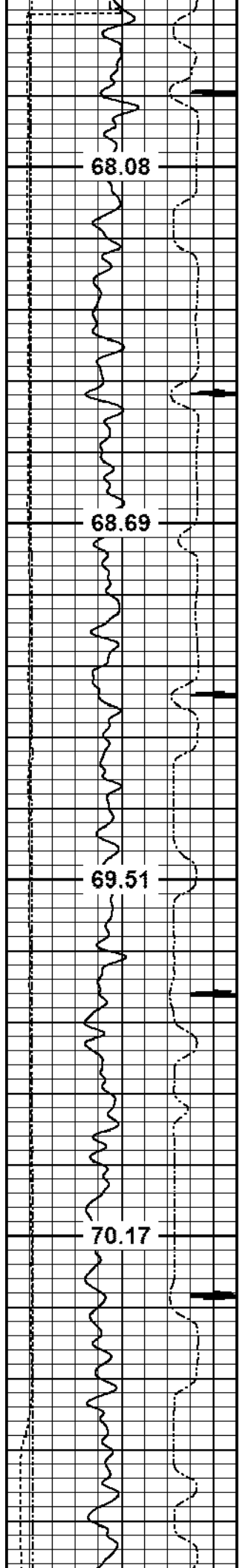
500

550

600

650



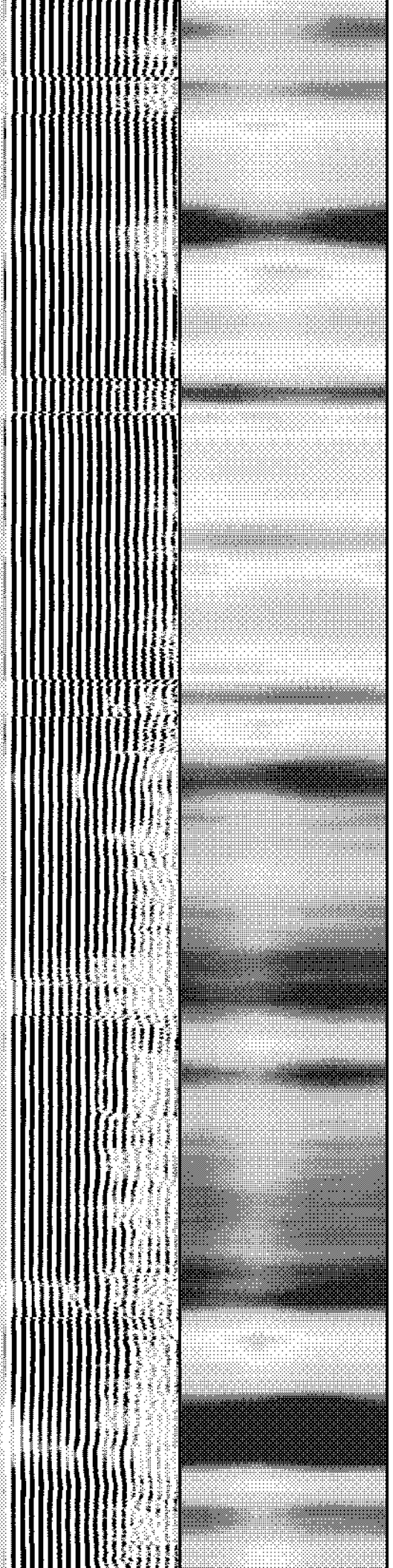
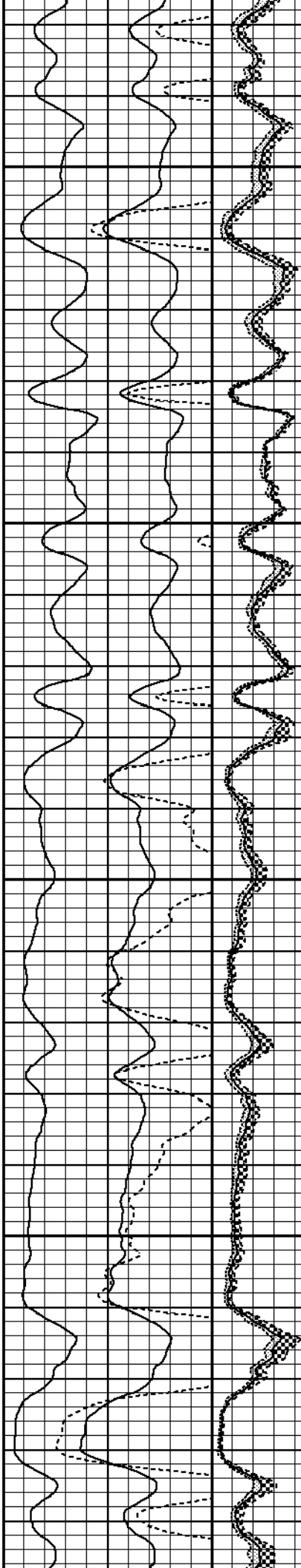


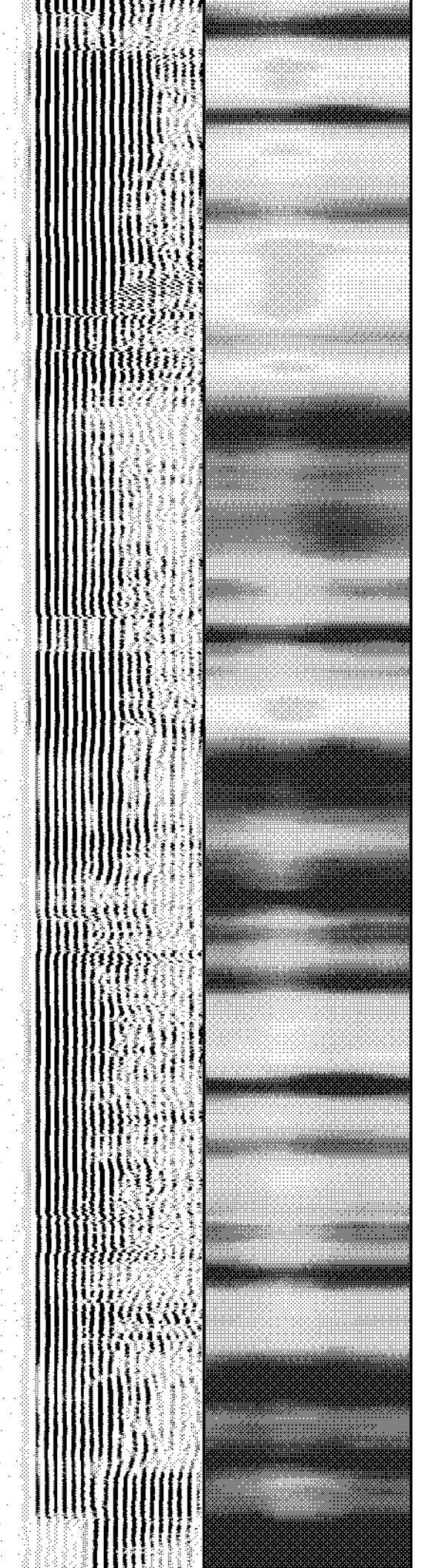
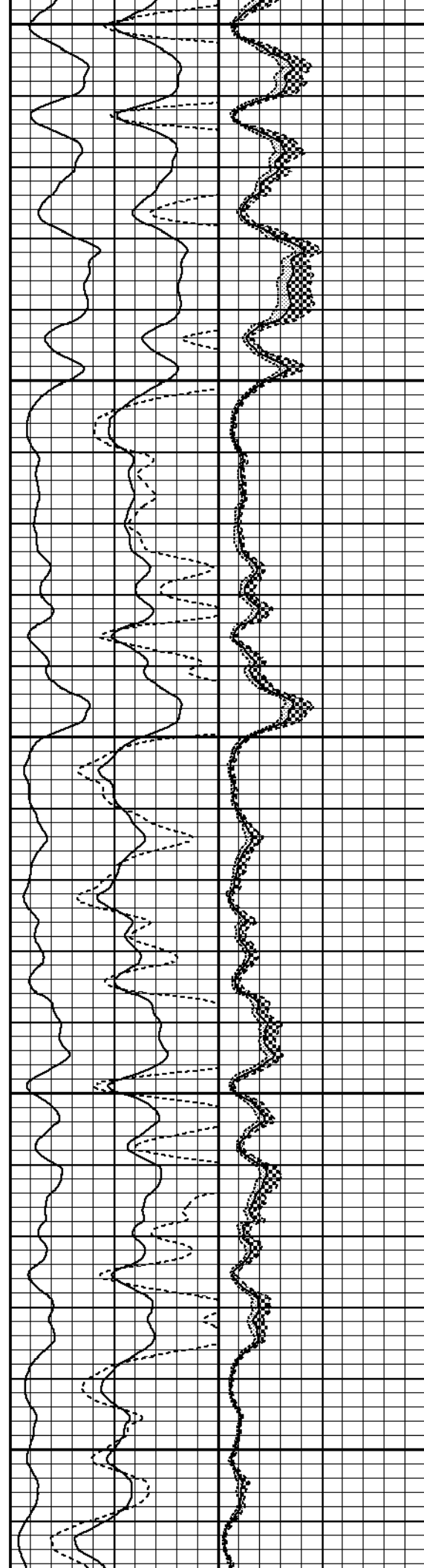
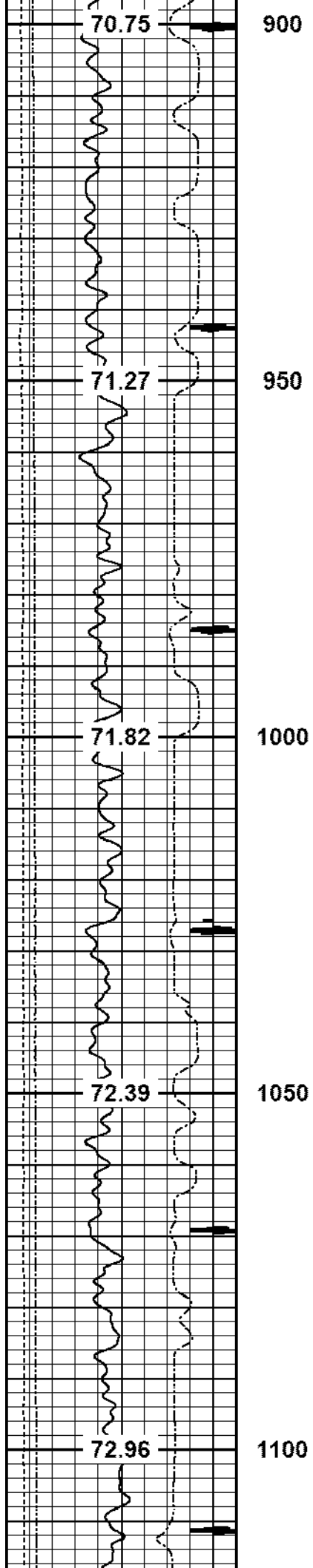
700

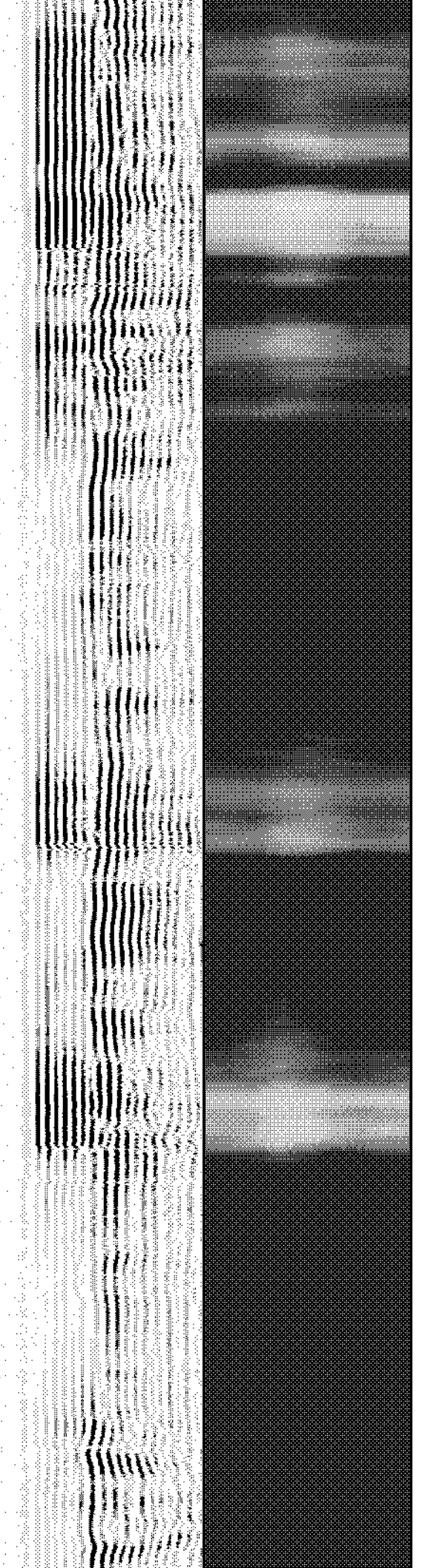
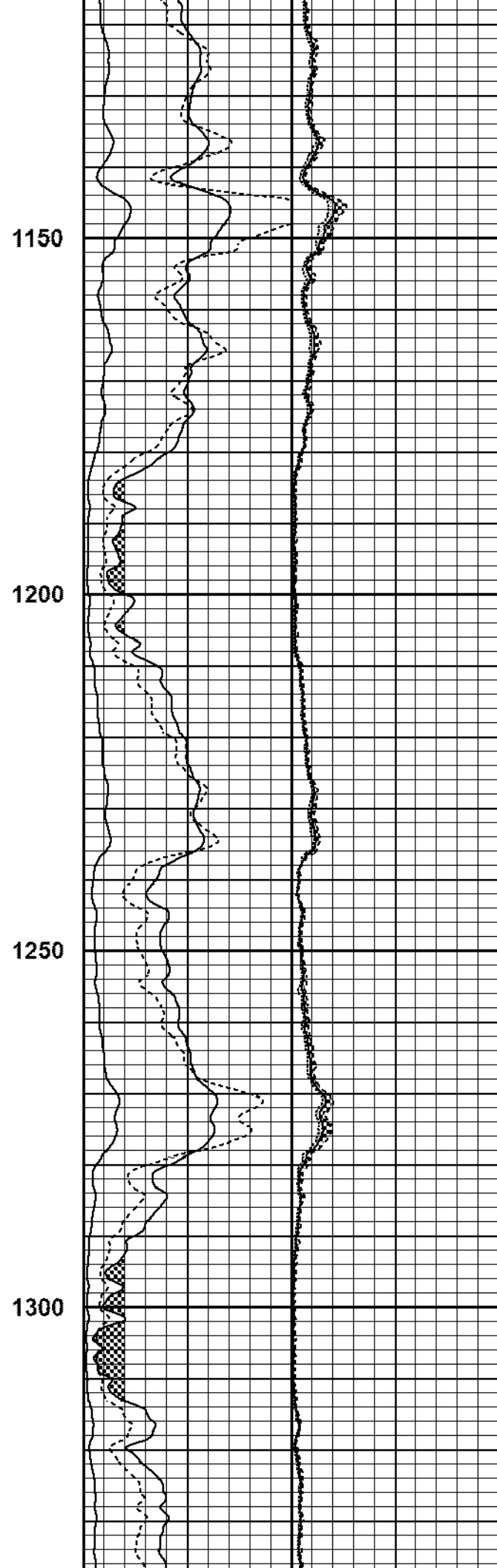
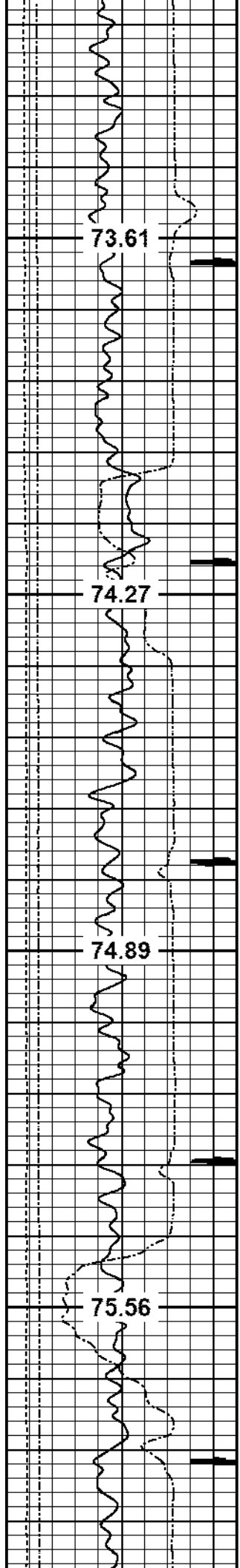
750

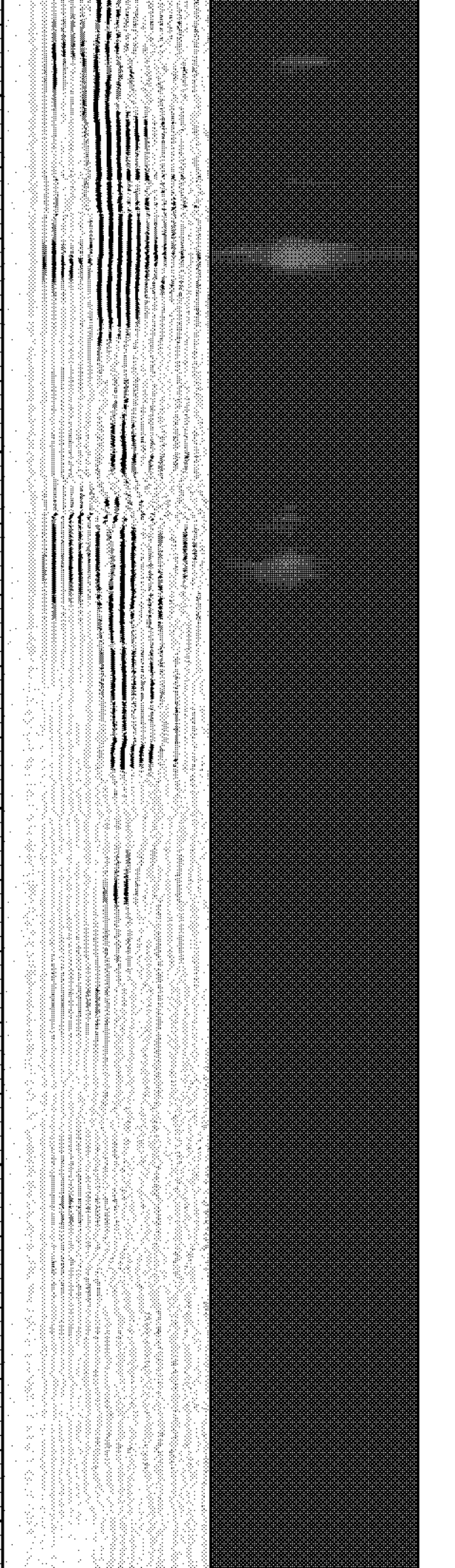
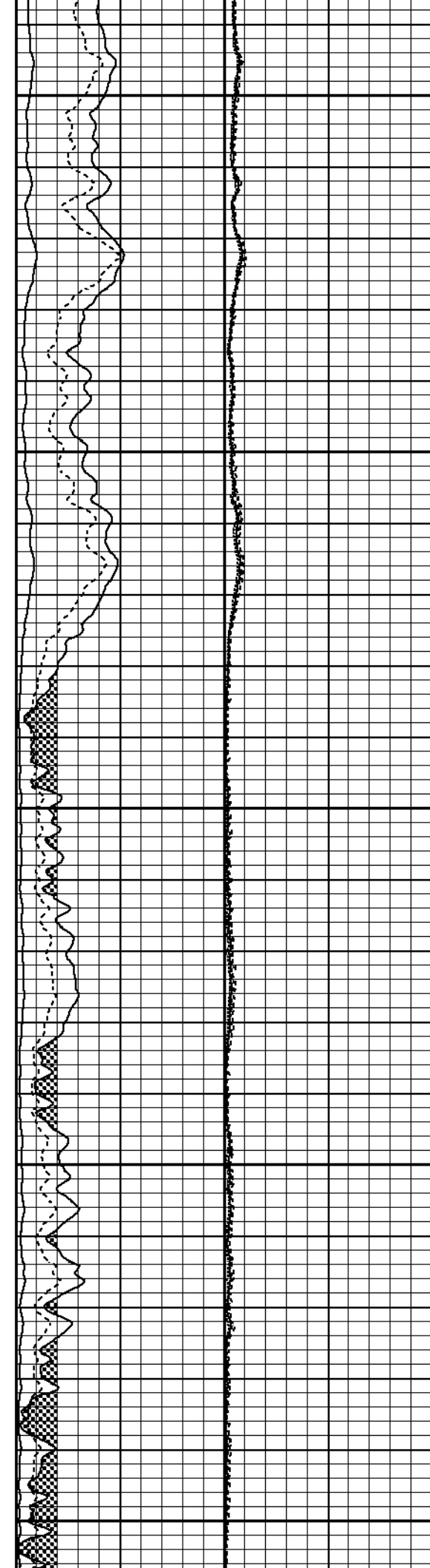
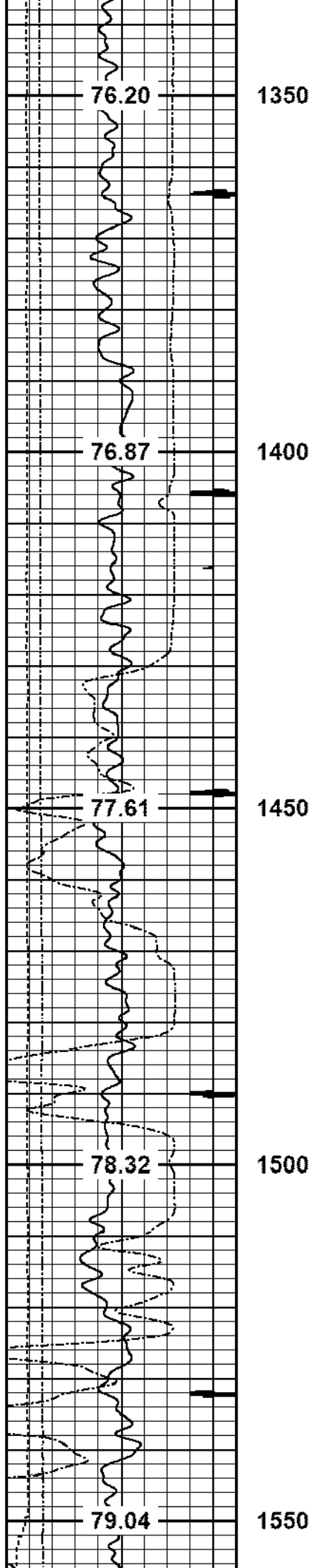
800

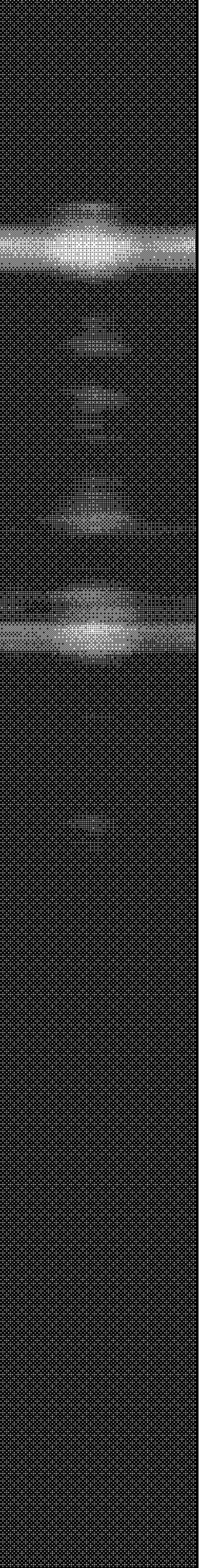
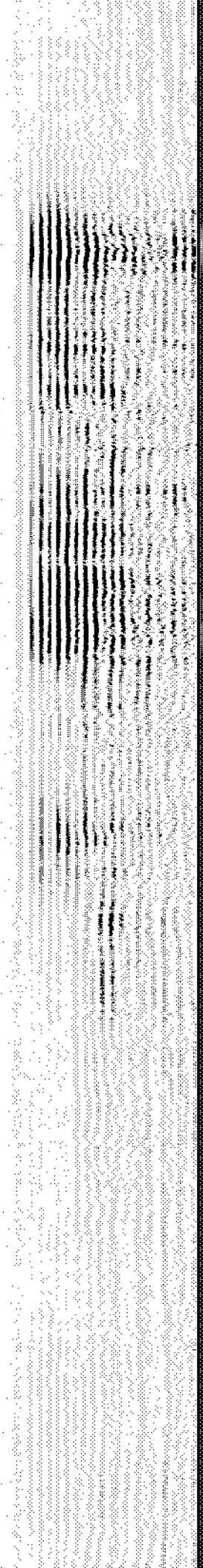
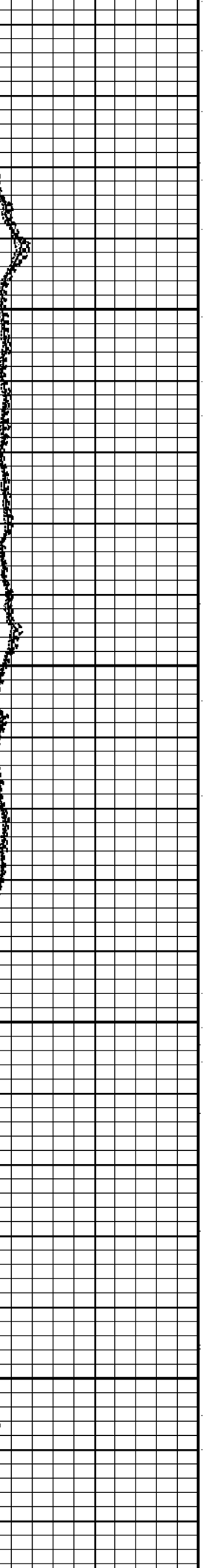
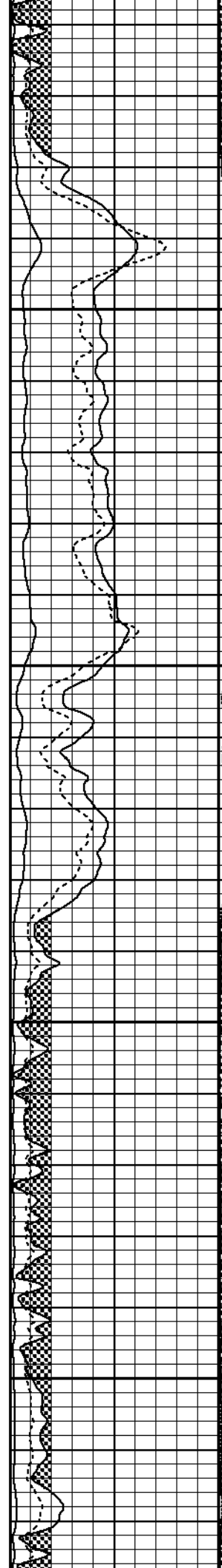
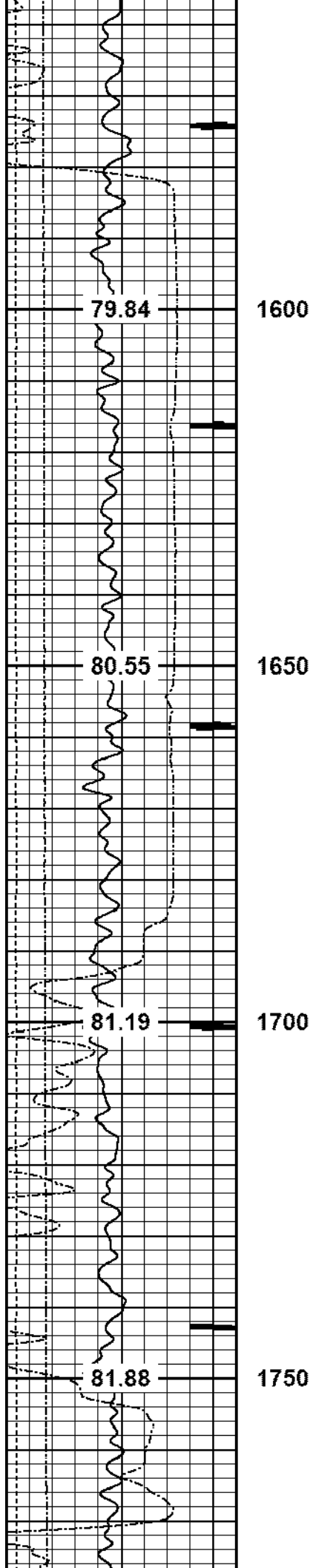
850

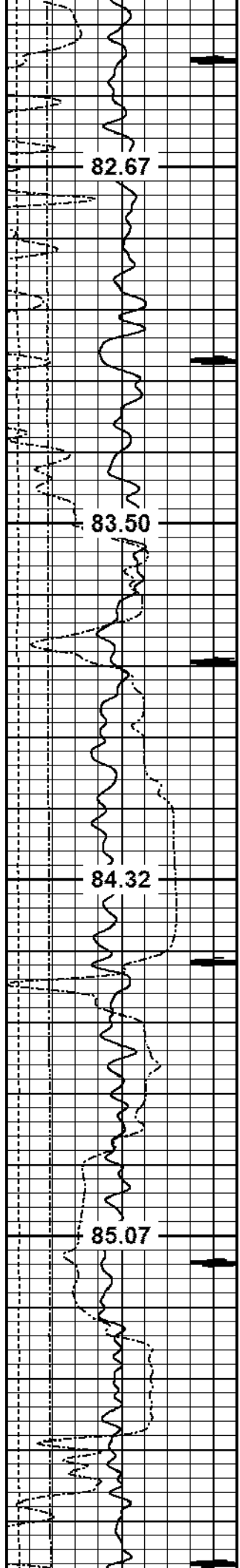










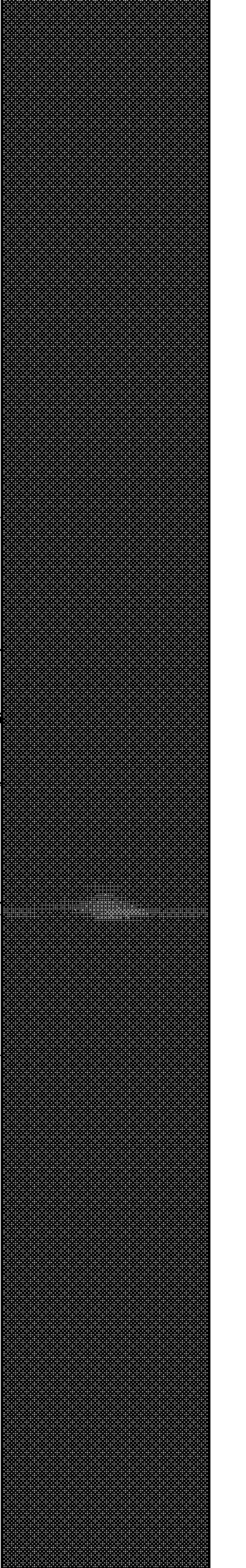
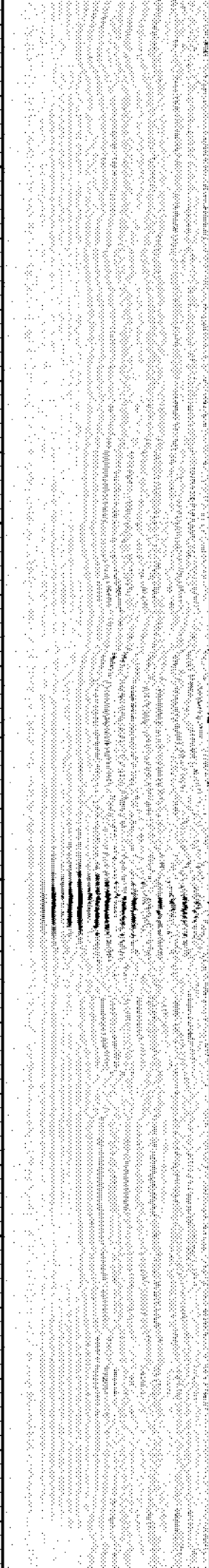
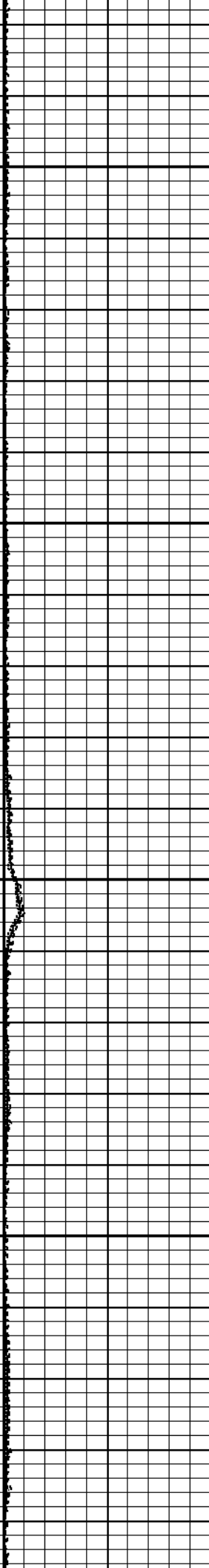
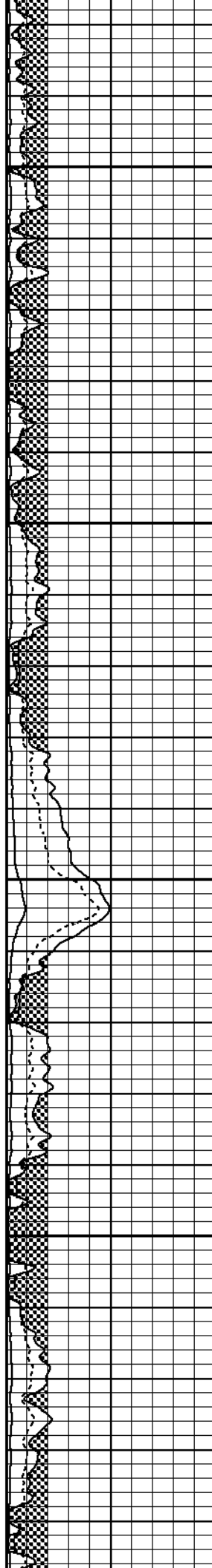


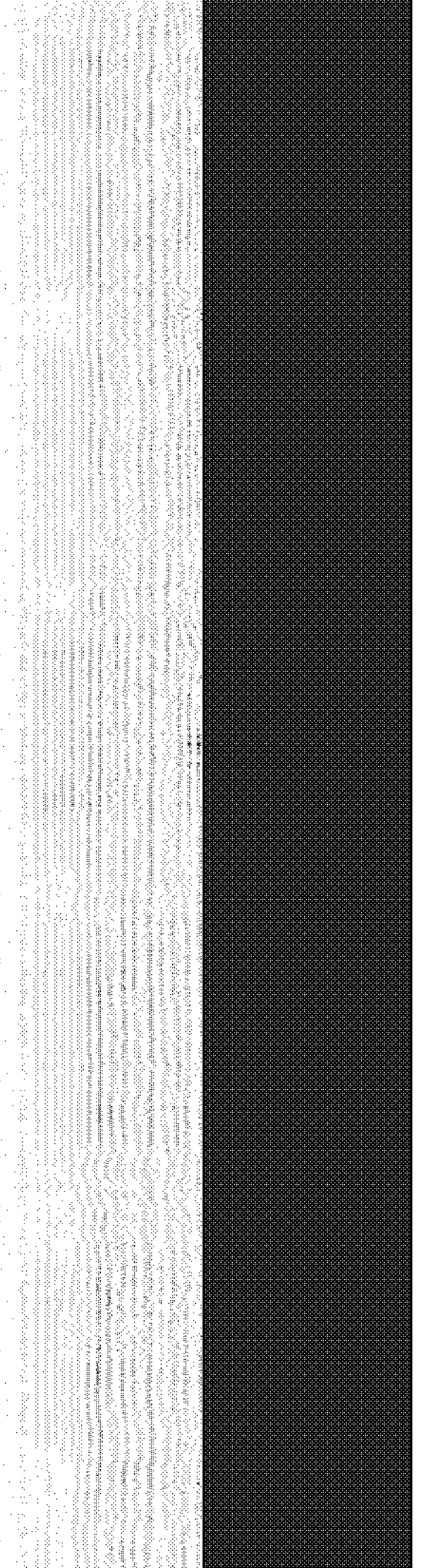
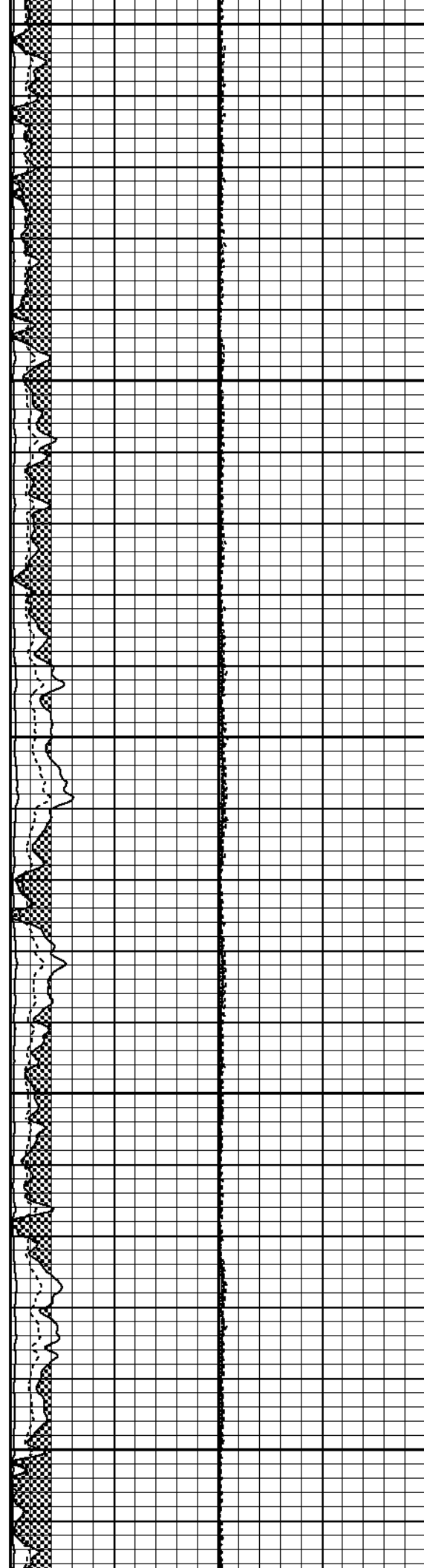
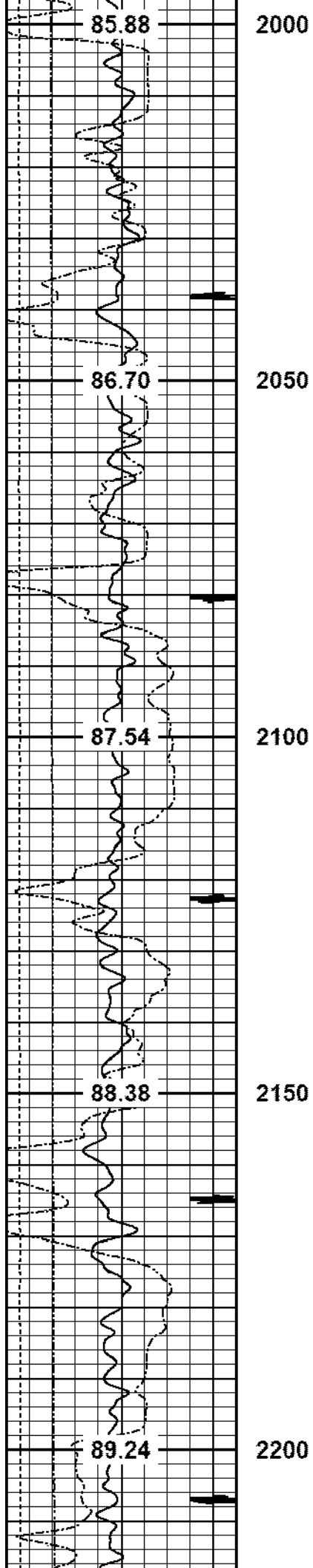
1800

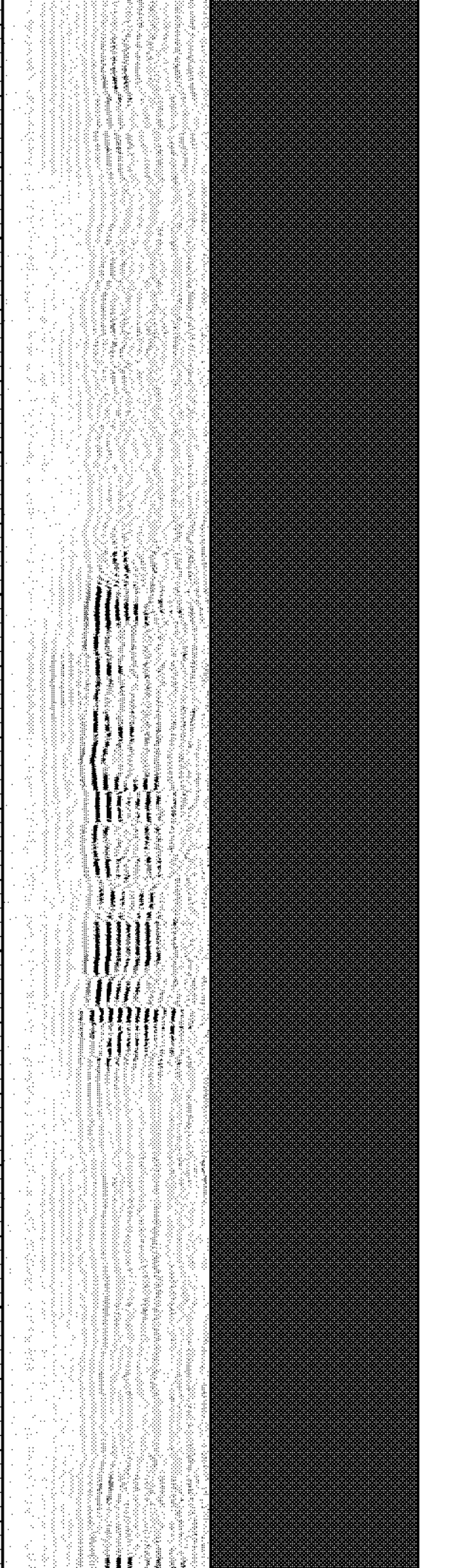
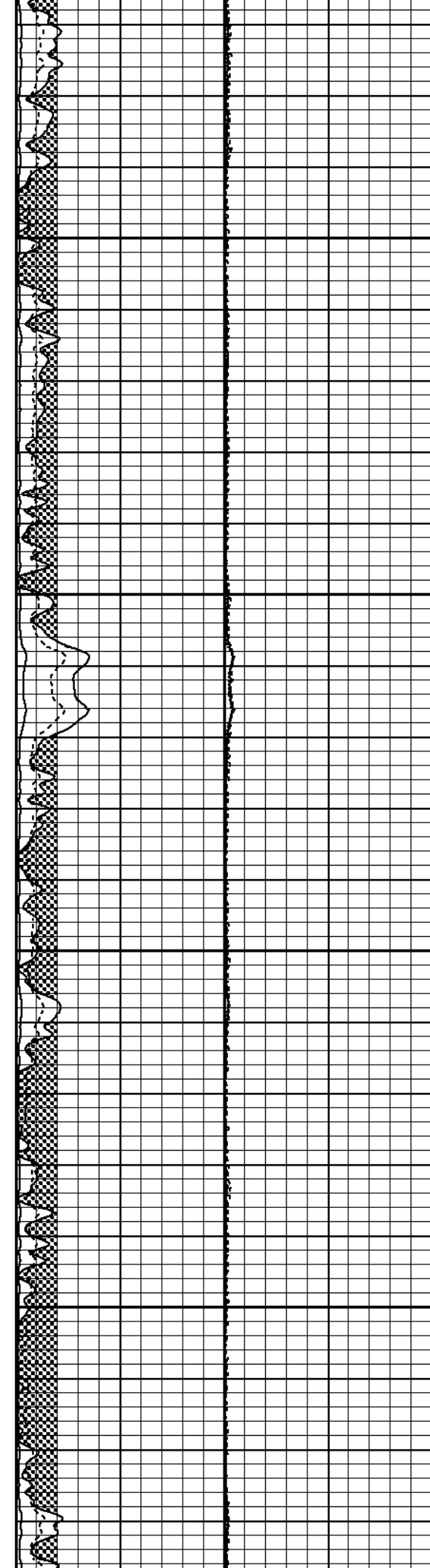
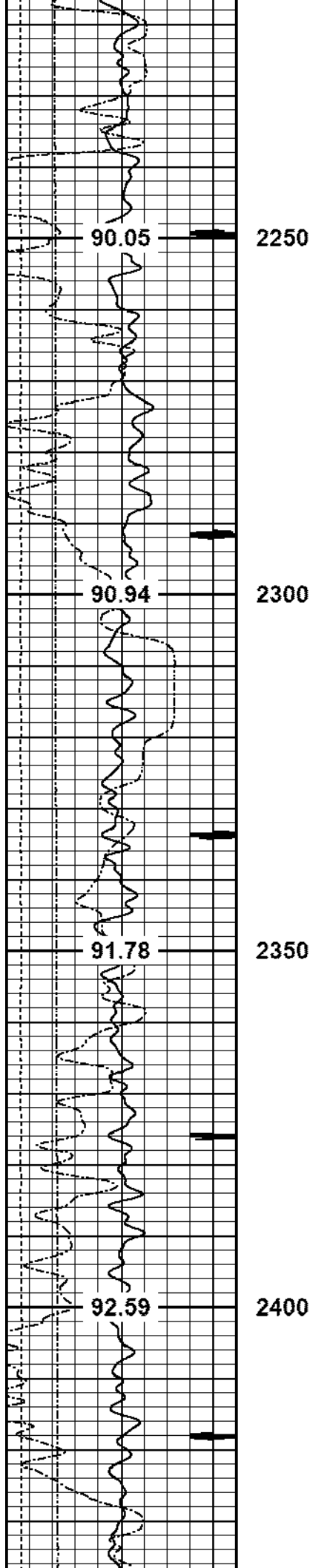
1850

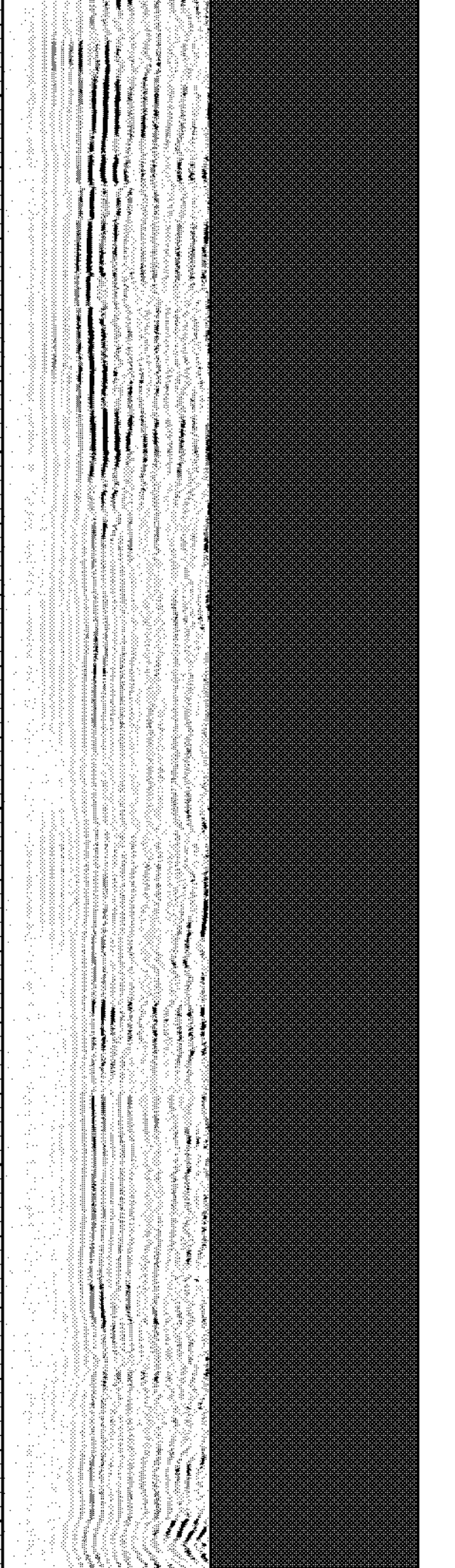
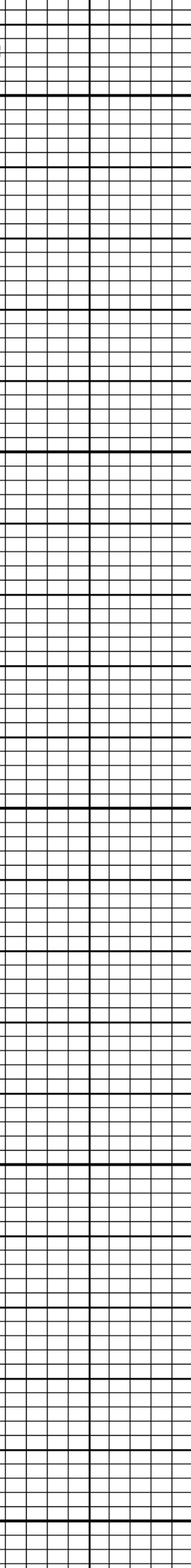
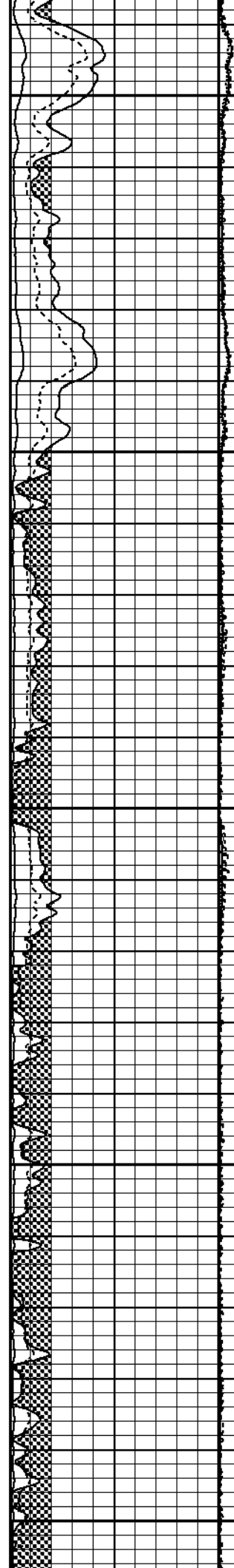
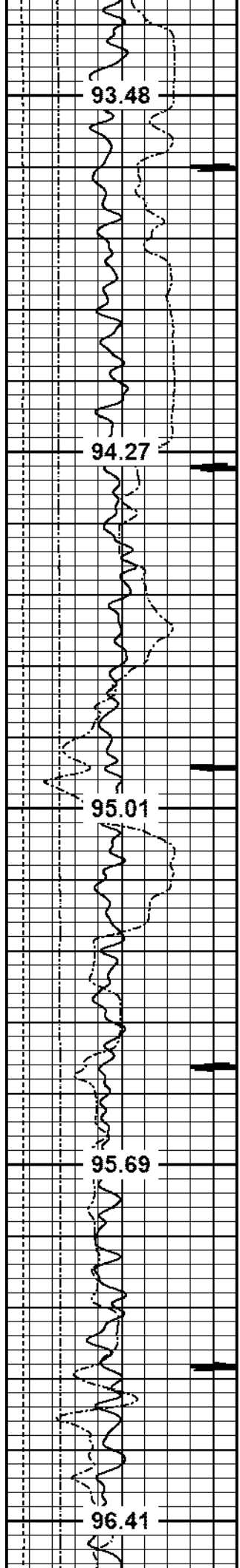
1900

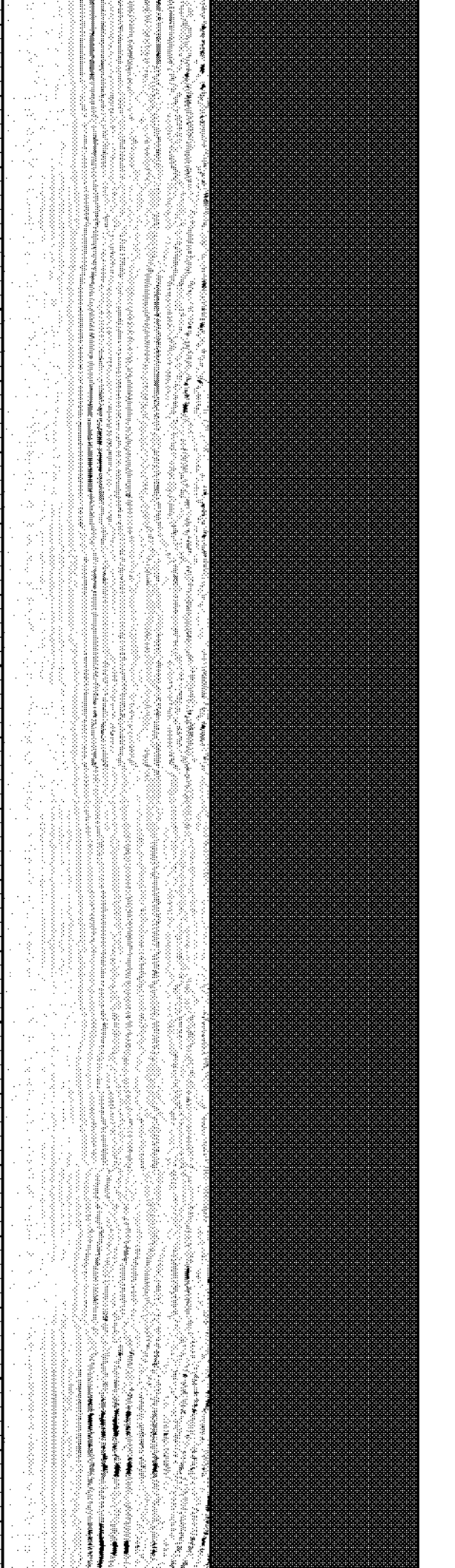
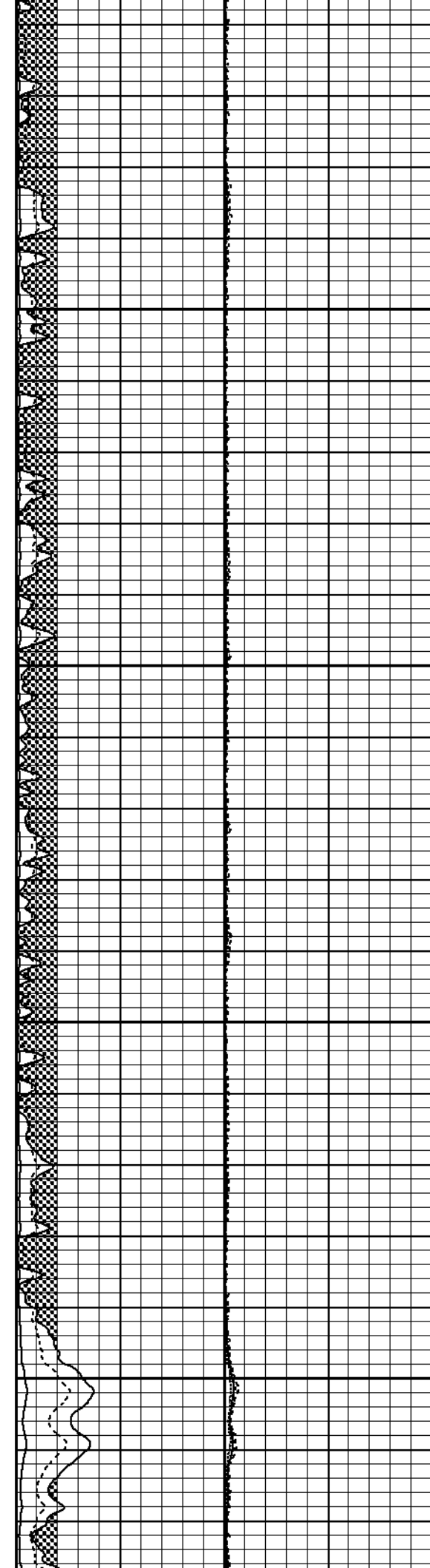
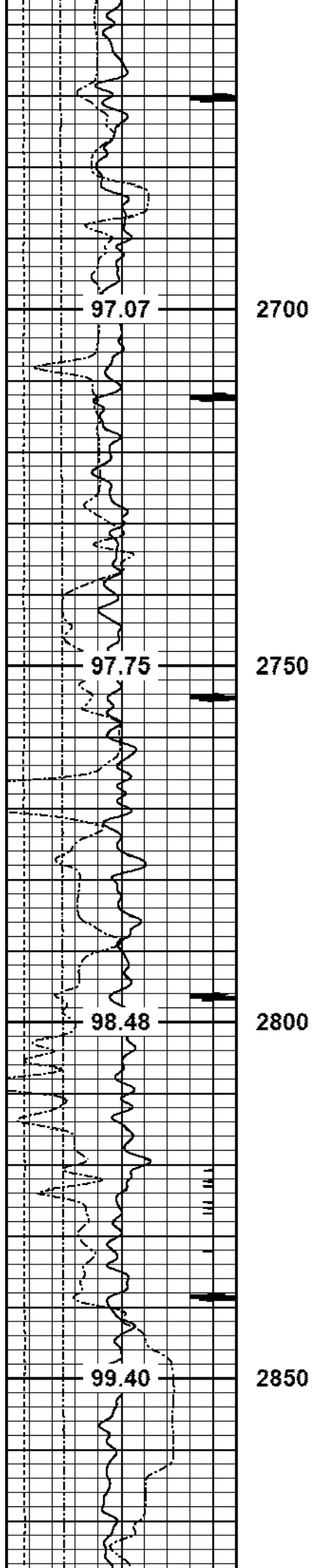
1950

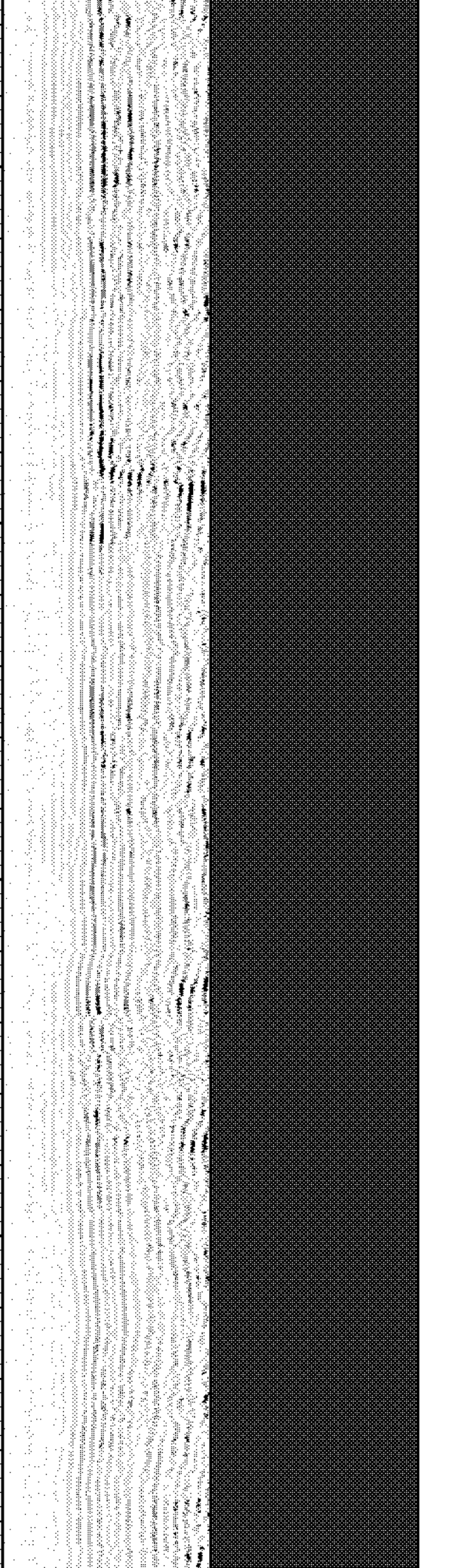
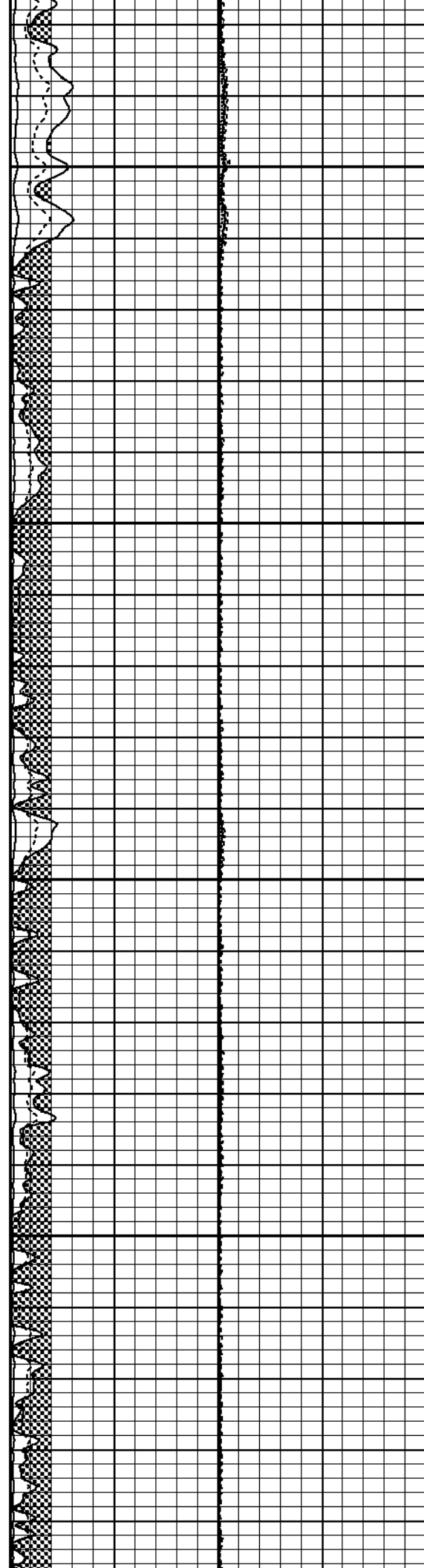
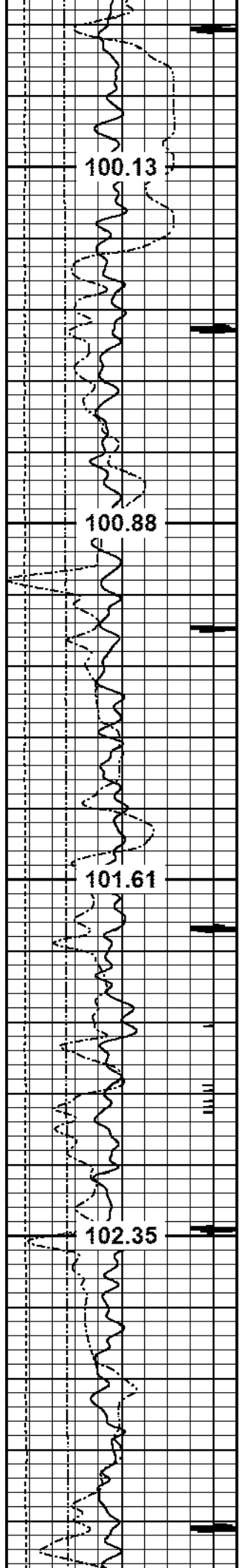


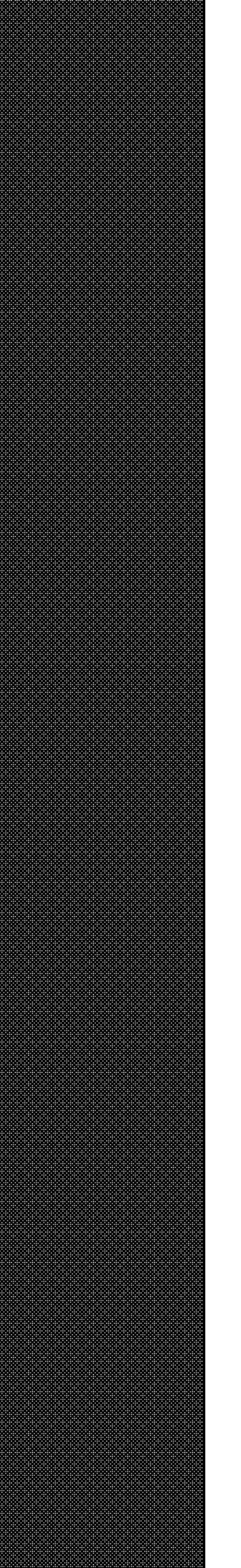
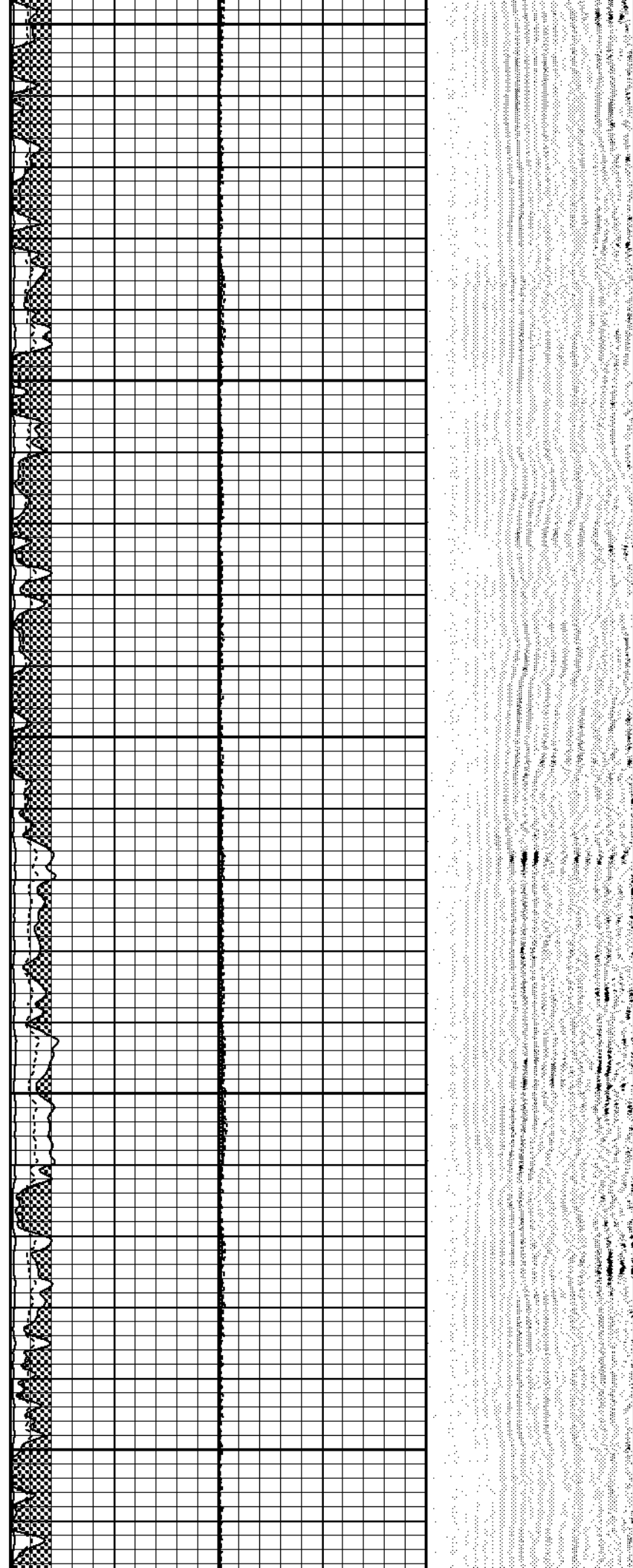
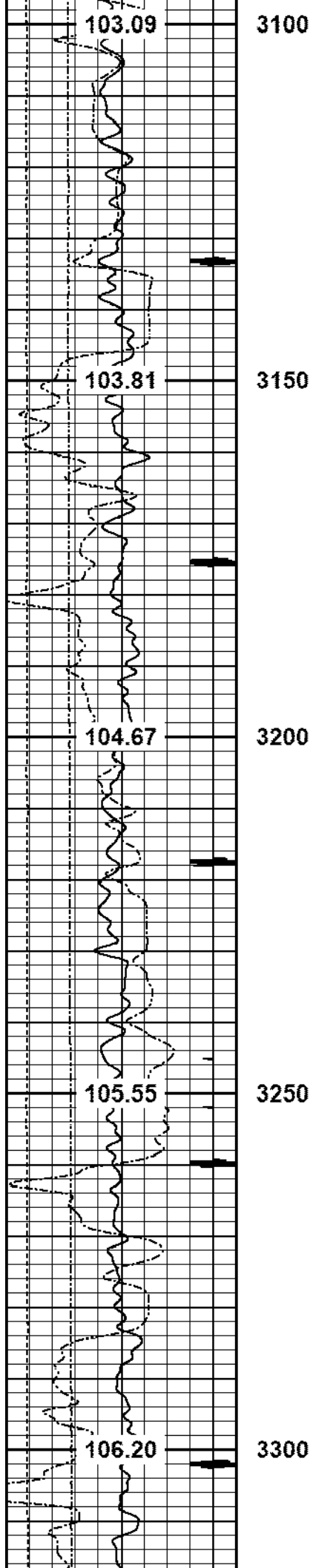


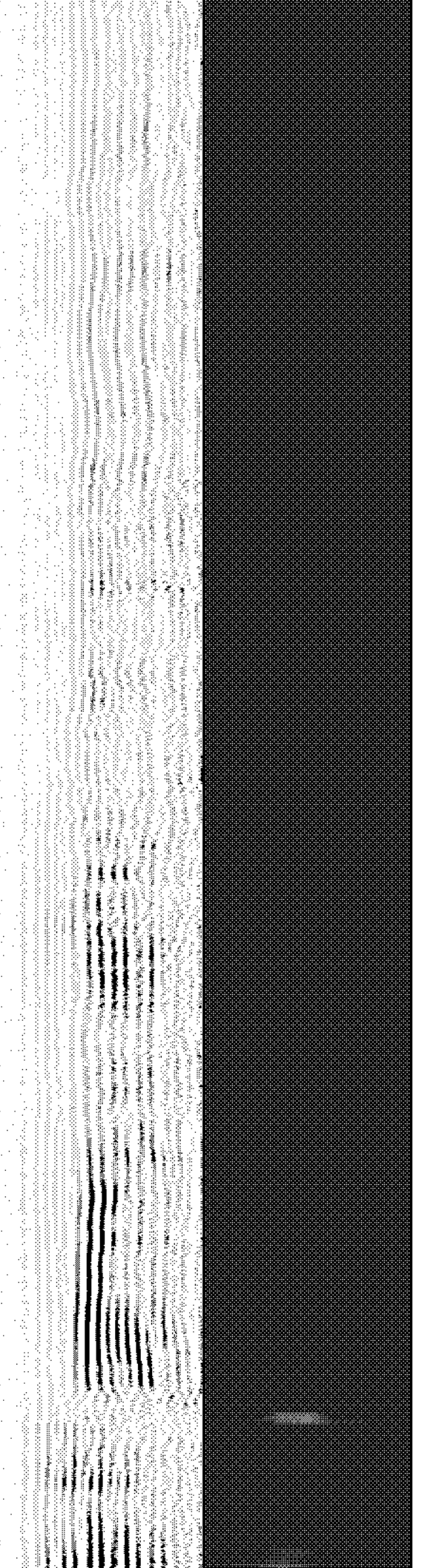
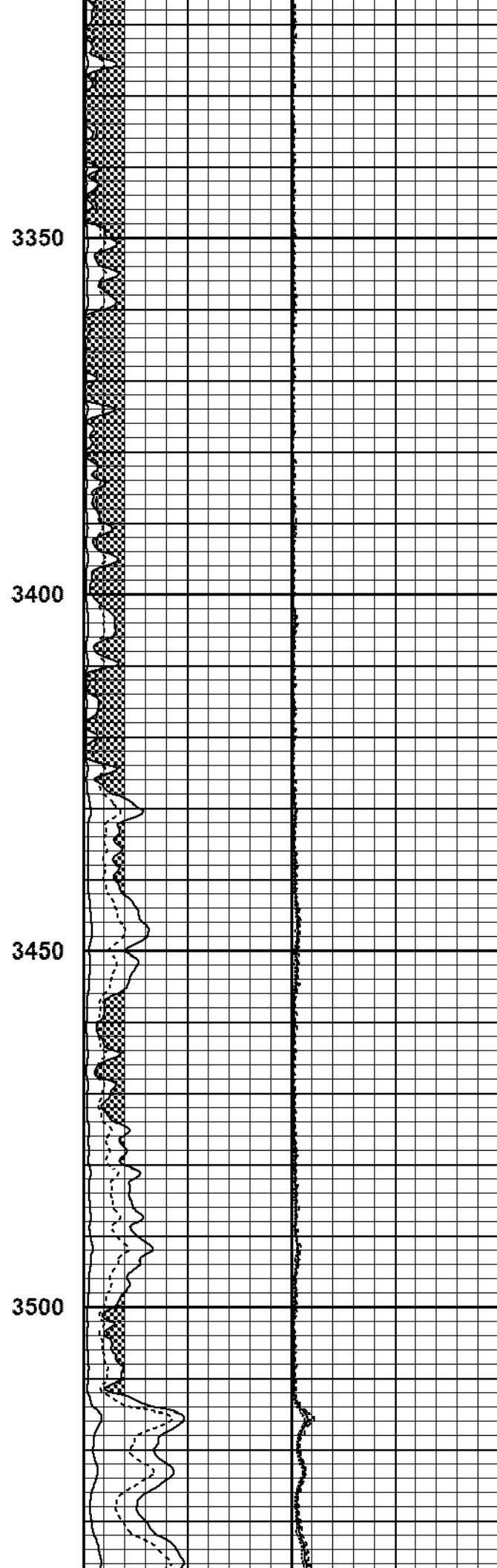
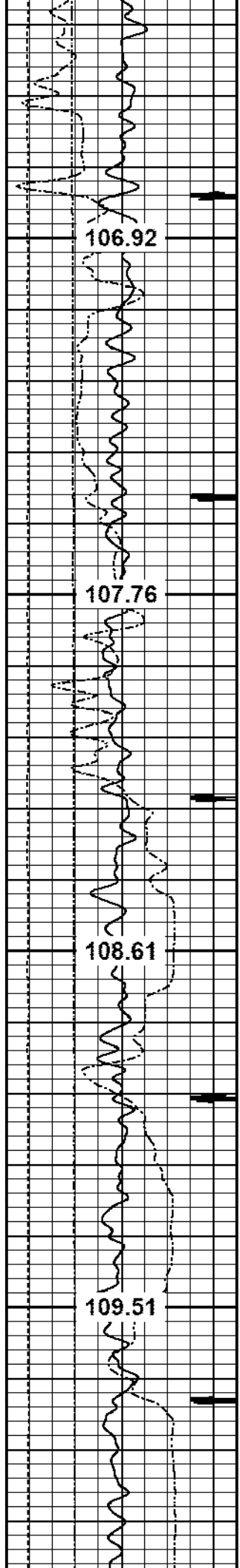


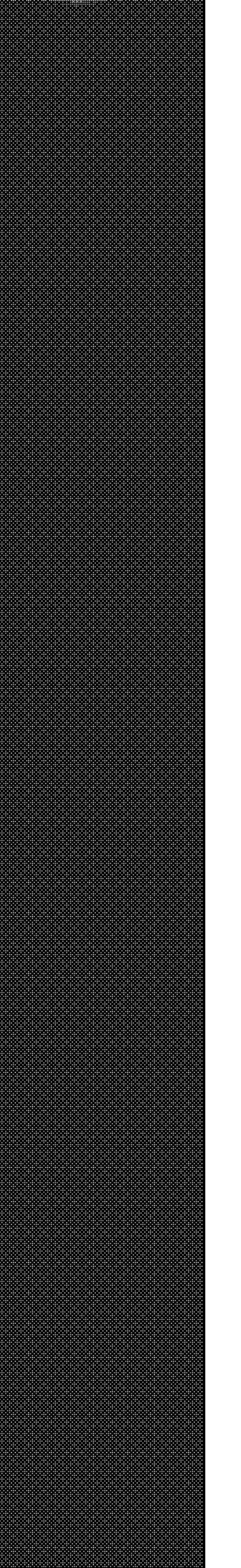
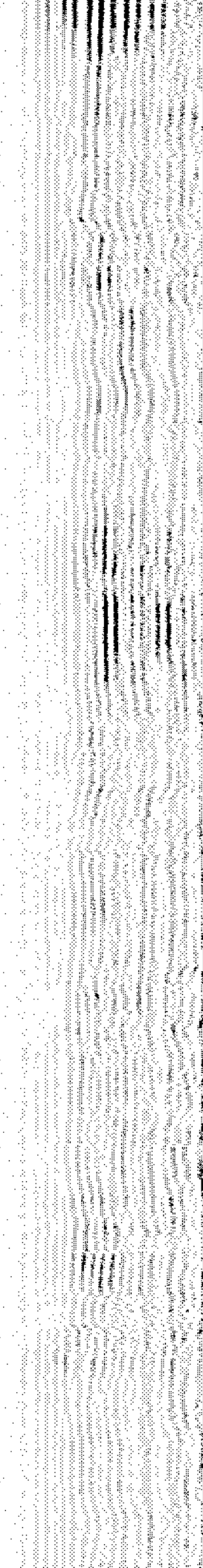
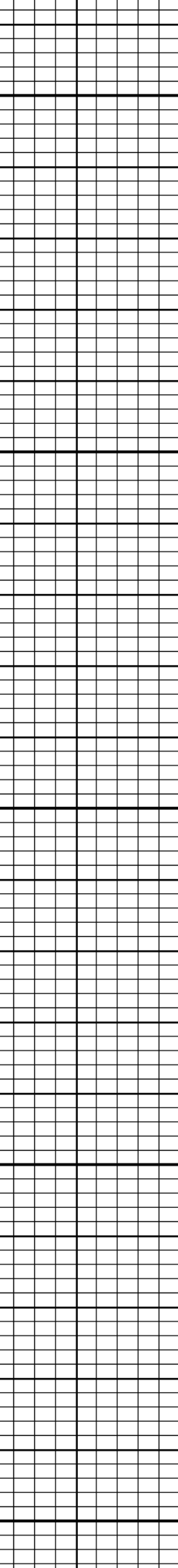
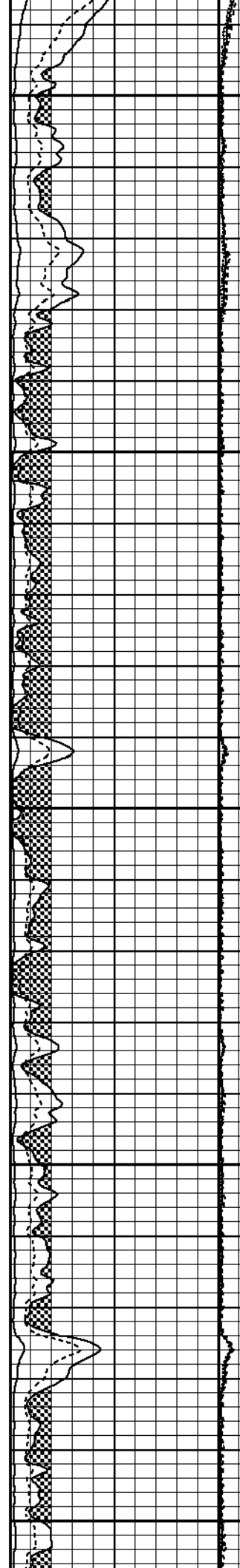
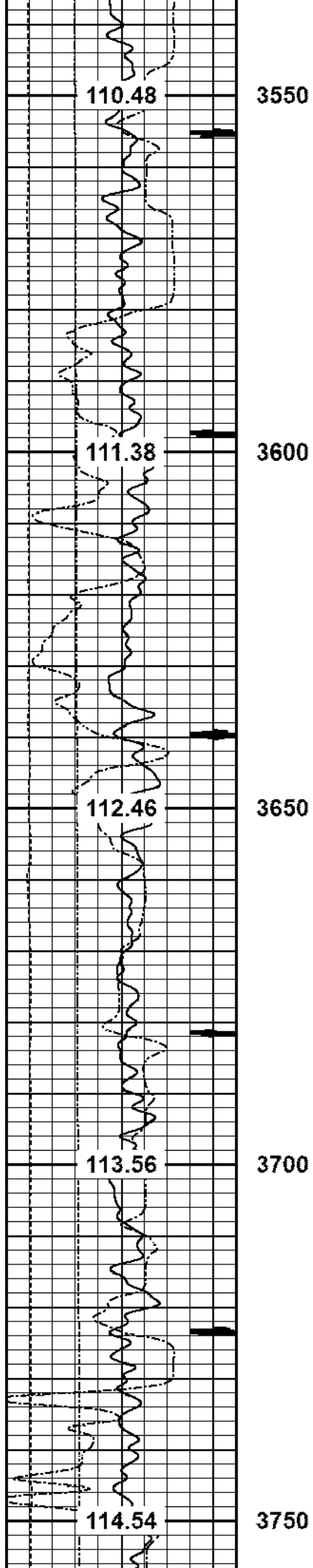


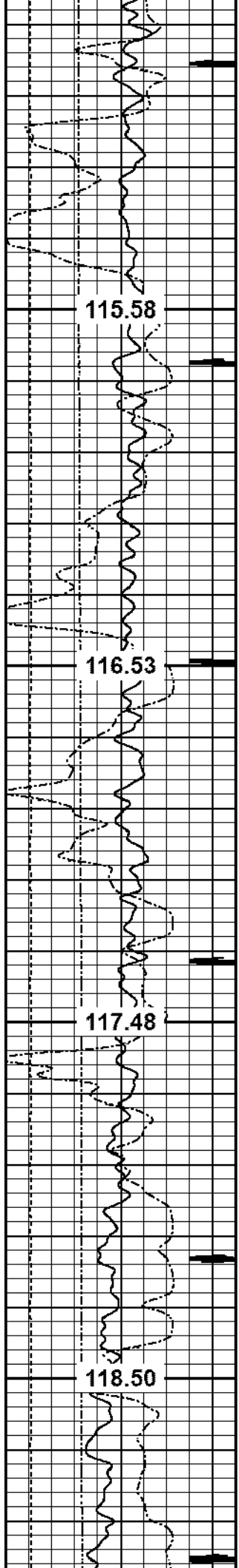










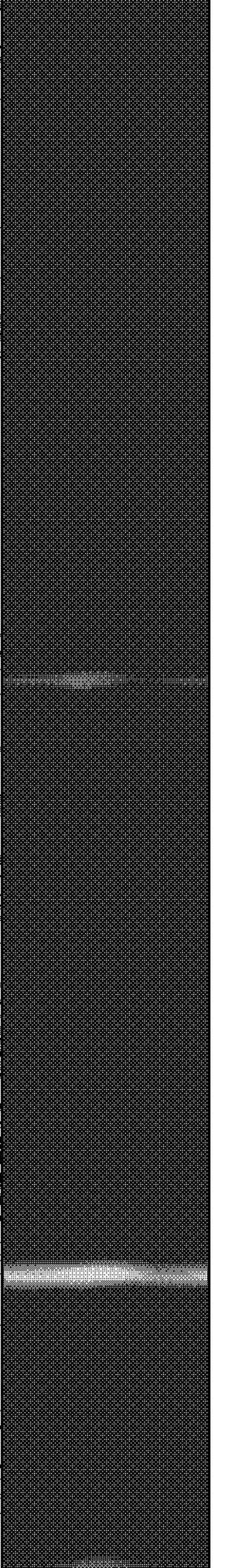
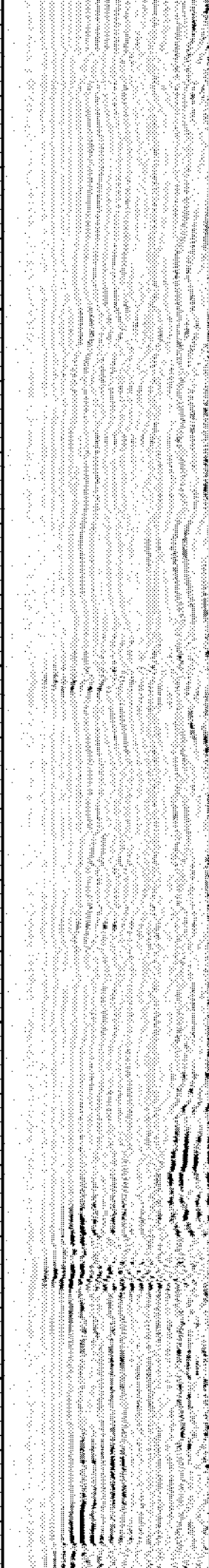
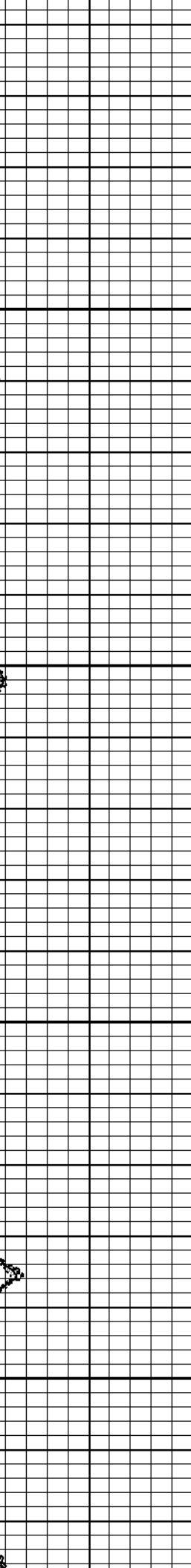
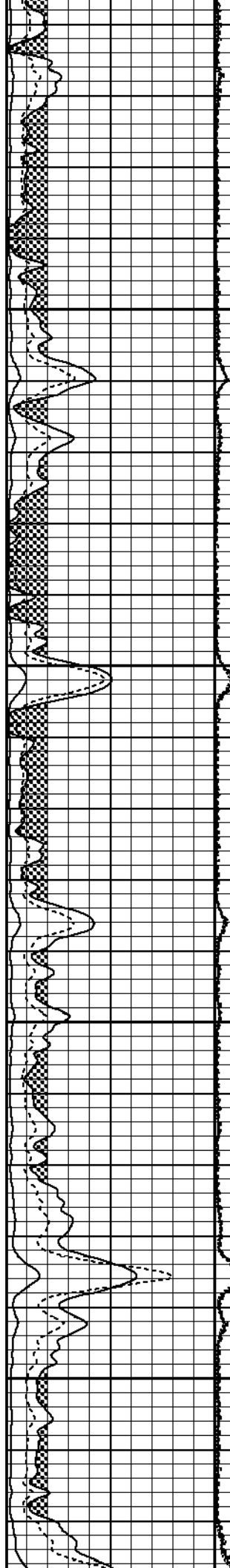


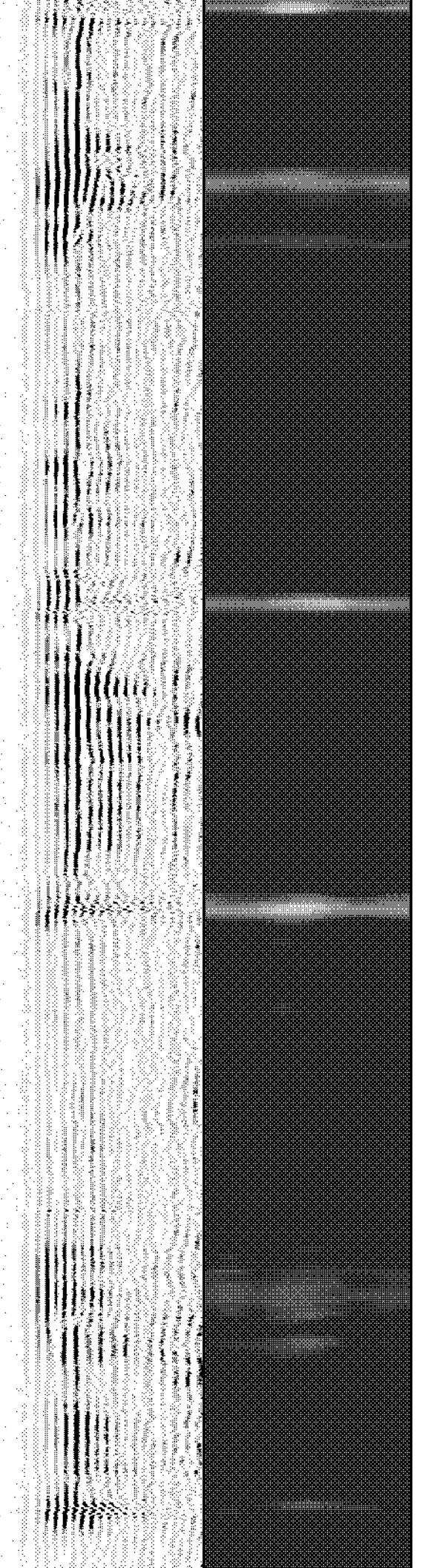
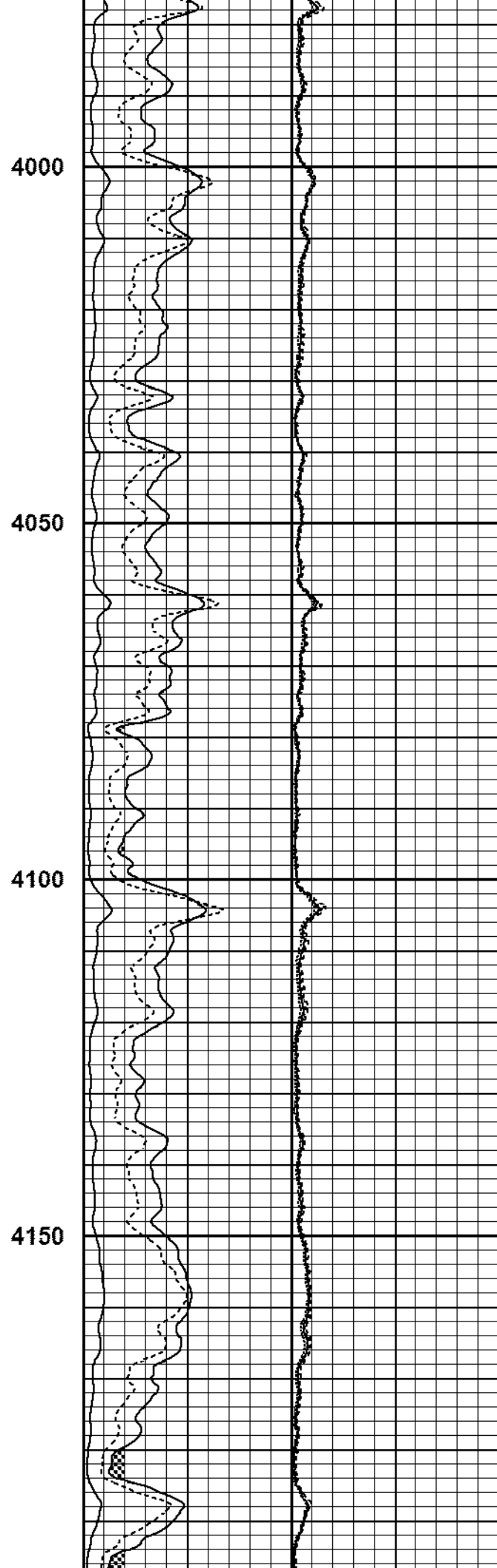
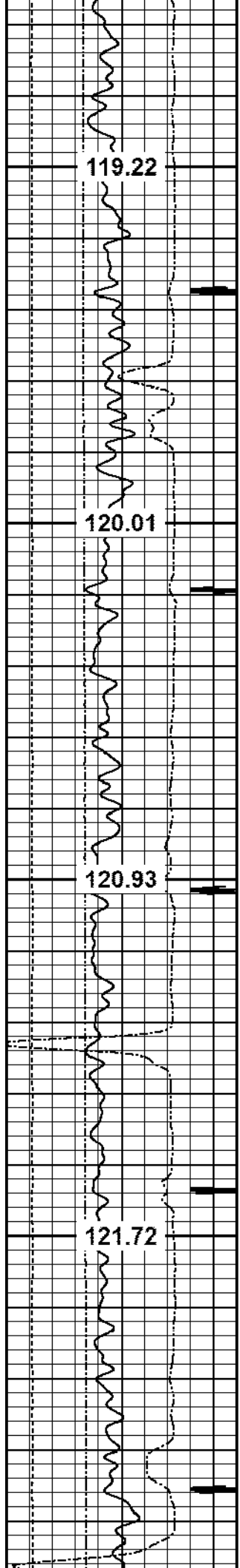
3800

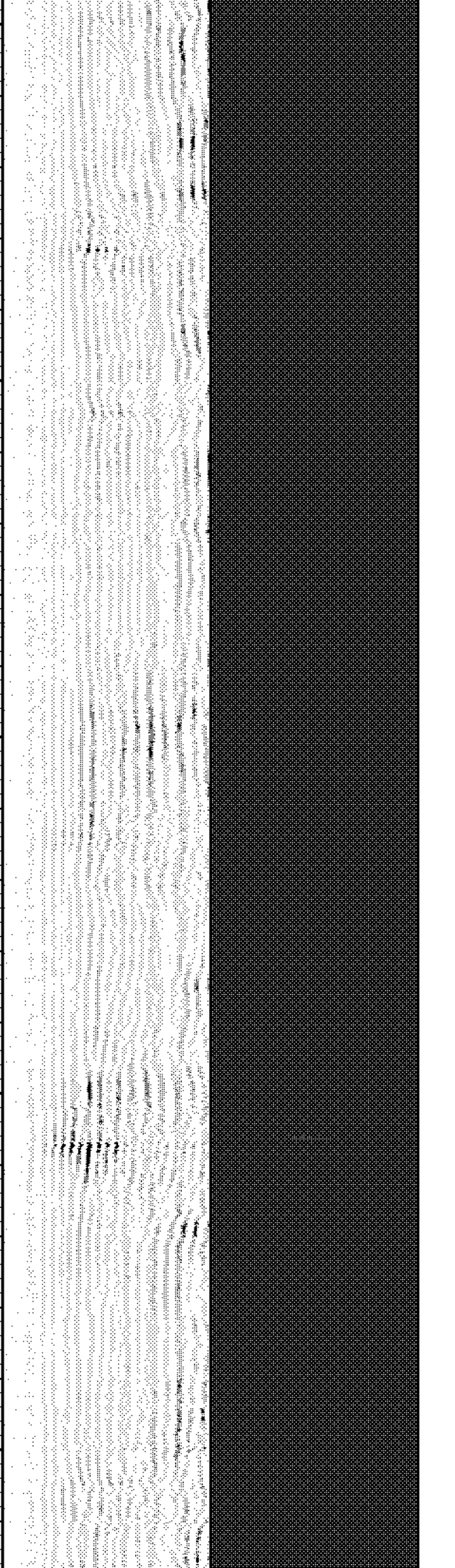
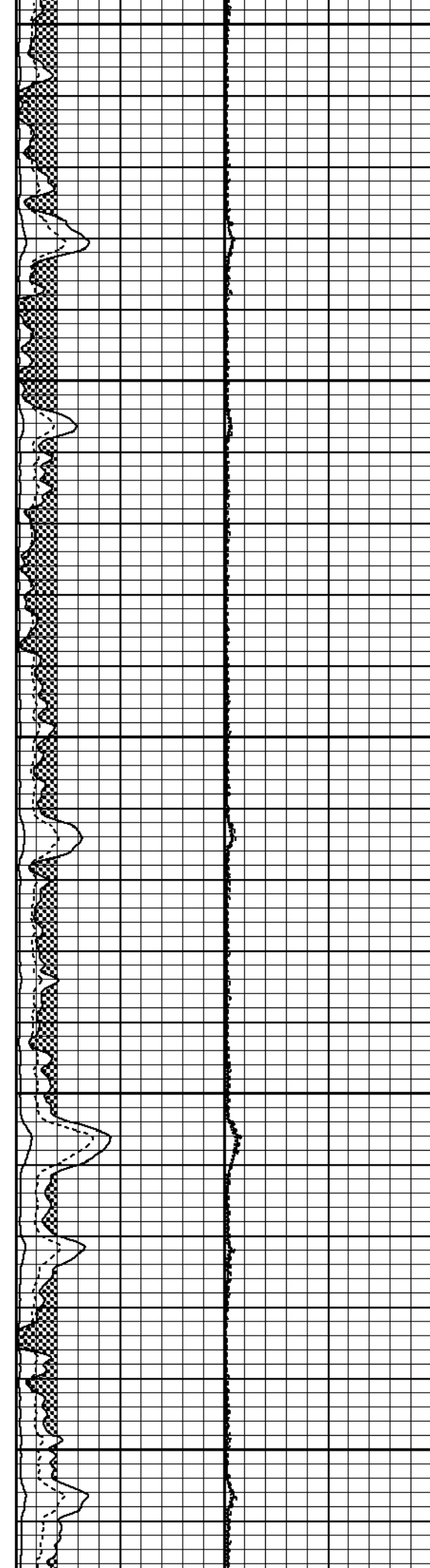
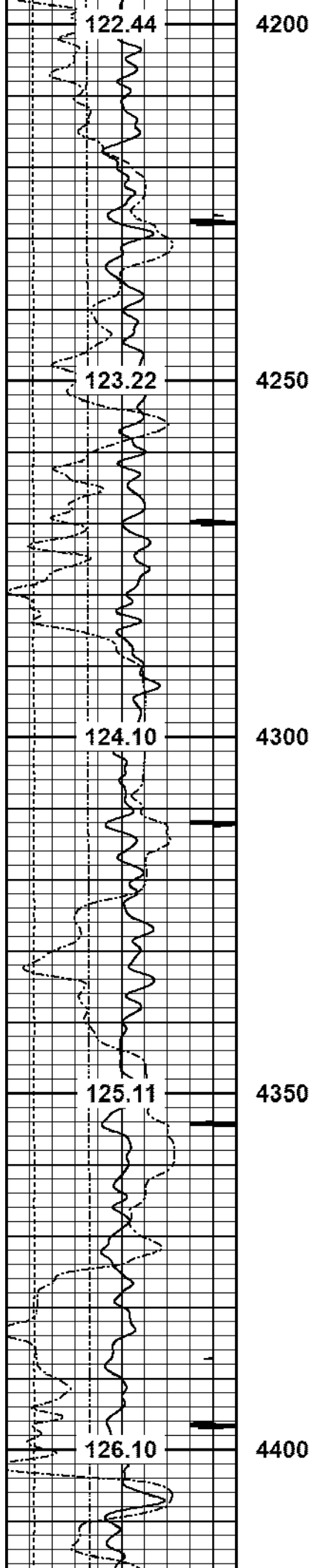
3850

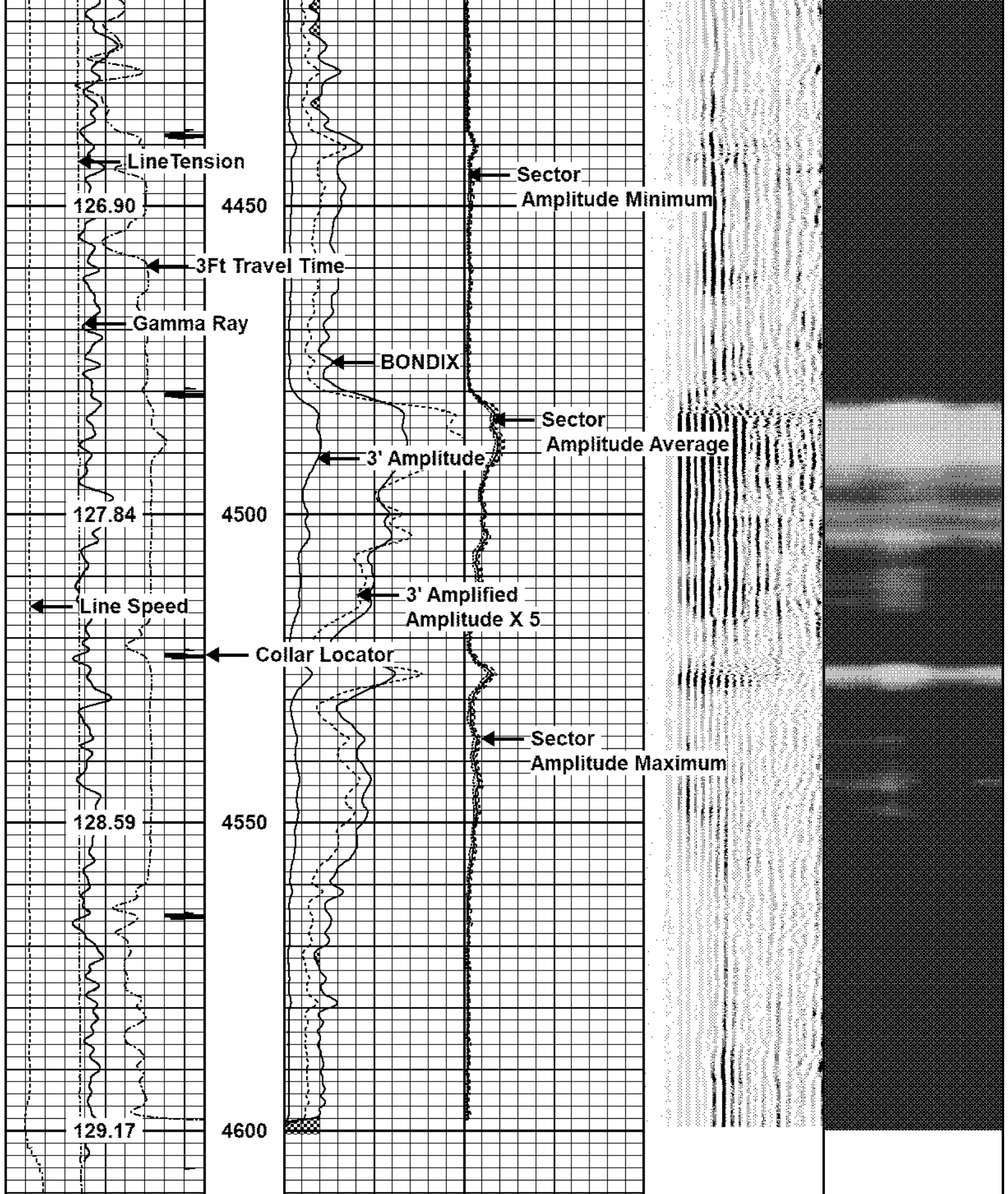
3900

3950





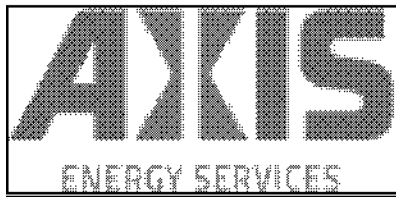




3Ft Travel Time	3' Amplitude	Sector	VDL	1 Sector Map 8
575 (usec) 175	0 (mV) 100	Amplitude Average	200 (usec) 1200	
-9 Collar Locator 1	3' Amplified Amplitude X 5	0 150		
Gamma Ray	0 (mV) 20	Sector Amplitude Maximum		

0	(GAPI)	150
LineTension		
0	(lb)	2000
Line Speed		
-100	(ft/min)	100
TEMP		
(degF)		

0	(mV)	20	Amplitude Maximum
1	BONDIX	0 0	150
Sector			
Amplitude Minimum			
0			150

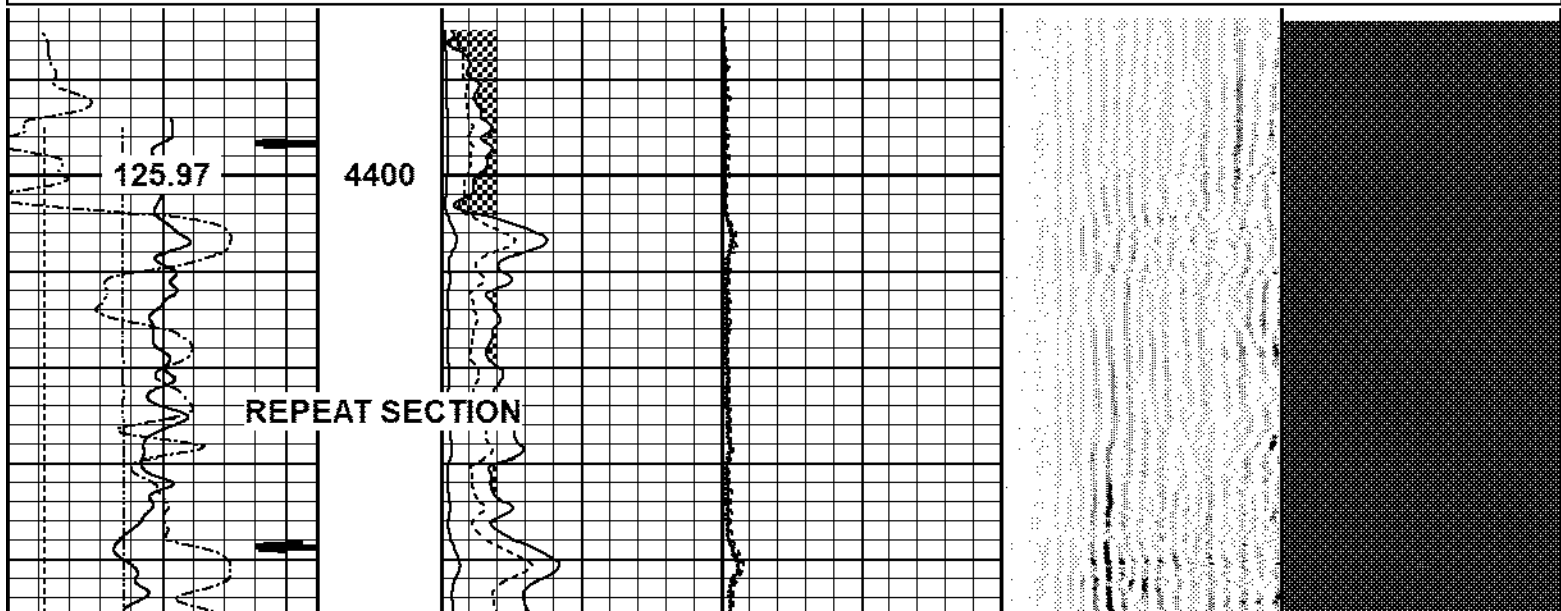


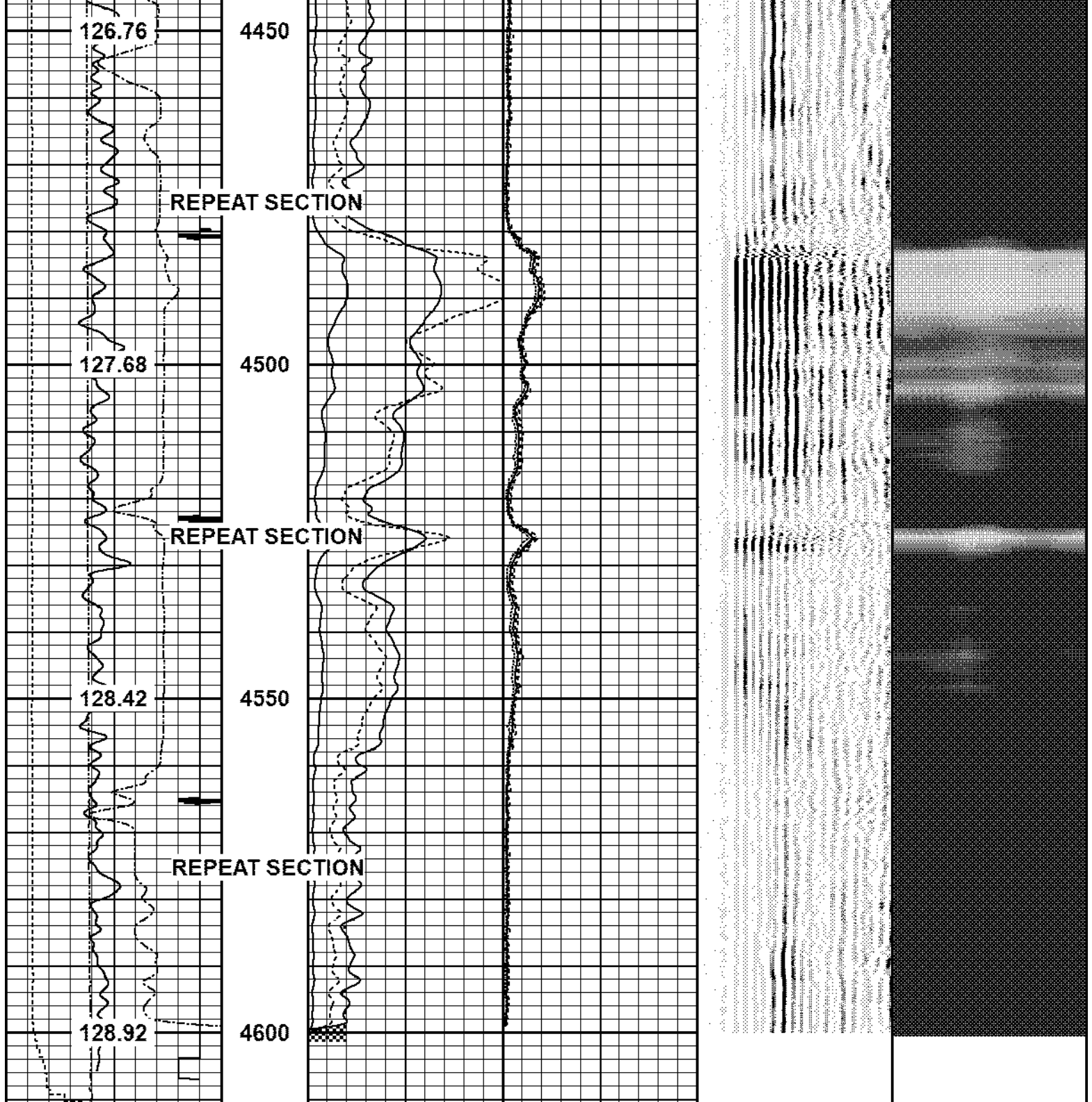
REPEAT SECTION

ZERO PSI APPLIED AT SURFACE

Database File	oxy_mead place 20-22_rcbl_8-22-24.db
Dataset Pathname	pass1
Presentation Format	pinr_scbl
Dataset Creation	Thu Aug 22 14:46:41 2024
Charted by	Depth in Feet scaled 1:240

3Ft Travel Time	3' Amplitude	Sector	VDL	1 Sector Map 8
575 (usec) 175	0 (mV) 100	Amplitude Average	200 (usec) 1200	
-9 Collar Locator 1	3' Amplified Amplitude X 5	0 150		
Gamma Ray	0 (mV) 20	Sector		
0 (GAPI) 150	1 BONDIX 0 0	Amplitude Maximum		
LineTension		150		
0 (lb) 2000		Sector		
Line Speed		Amplitude Minimum		
-100 (ft/min) 100		0 150		
TEMP				
(degF)				





3Ft Travel Time		
575	(usec)	175
-9 Collar Locator		
1		
Gamma Ray		
0	(GAPI)	150
LineTension		
0	(lb)	2000
Line Speed		
-100	(ft/min)	100

3' Amplitude		
0	(mV)	100
3' Amplified Amplitude X 5		
0	(mV)	20
1 BONDIX		

Sector Amplitude Average	
0	150
Sector Amplitude Maximum	
0	150
Sector Amplitude Minimum	
0	150

VDL
200 (usec) 1200

1 **Sector Map 8**

TEMP
(degF)

Calibration Report

Database File oxy_mead place 20-22_rcbl_8-22-24.db
 Dataset Pathname pass2
 Dataset Creation Thu Aug 22 14:51:06 2024

Gamma Ray Calibration Report

Serial Number: 140181
 Tool Model: 275 Probe GCT
 Performed: Tue Apr 11 10:14:32 2023

Calibrator Value: 1.0 GAPI

Background Reading: 0.0 cps
 Calibrator Reading: 1.0 cps

Sensitivity: 0.5500 GAPI/cps

Segmented Cement Bond Log Calibration Report

Serial Number: FW1304-34
 Tool Model: RBL-DC

Calibration Casing Diameter: 4.500 in
 Calibration Depth: 723.576 ft

Master Calibration, performed Thu Aug 22 14:35:32 2024:

	Raw (v)		Calibrated (mv)		Results	
	Zero	Cal	Zero	Cal	Gain	Offset
3'	0.015	1.553	0.800	81.196	52.259	0.017
CAL	1.508	1.546				
5'	0.032	1.470	0.800	81.196	55.906	-0.968
SUM						
S1	0.012	1.553	0.000	100.000	64.893	-0.798
S2	0.024	1.584	0.000	100.000	64.101	-1.533
S3	0.024	1.570	0.000	100.000	64.649	-1.531
S4	0.020	1.561	0.000	100.000	64.894	-1.290
S5	0.020	1.572	0.000	100.000	64.403	-1.270
S6	0.022	1.570	0.000	100.000	64.589	-1.402
S7	0.020	1.566	0.000	100.000	64.706	-1.311
S8	0.021	1.562	0.000	100.000	64.880	-1.338

Air Zero Calibration, performed Thu Aug 22 14:04:12 2024:

	Raw (v)		Calibrated (v)		Results	
	Zero		Zero			Offset
3'	0.000		0.000			0.000
5'	0.000		0.000			0.000
SUM						
S1	0.000		0.000			0.000
S2	0.000		0.000			0.000
S3	0.000		0.000			0.000
S4	0.000		0.000			0.000

S5	0.000	0.000	0.000
S6	0.000	0.000	0.000
S7	0.000	0.000	0.000
S8	0.000	0.000	0.000



Company	ANADARKO PETROLEUM CORP
Well	MEAD PLACE 20-22
Field	WATTENBERG
County	WELD
State	CO