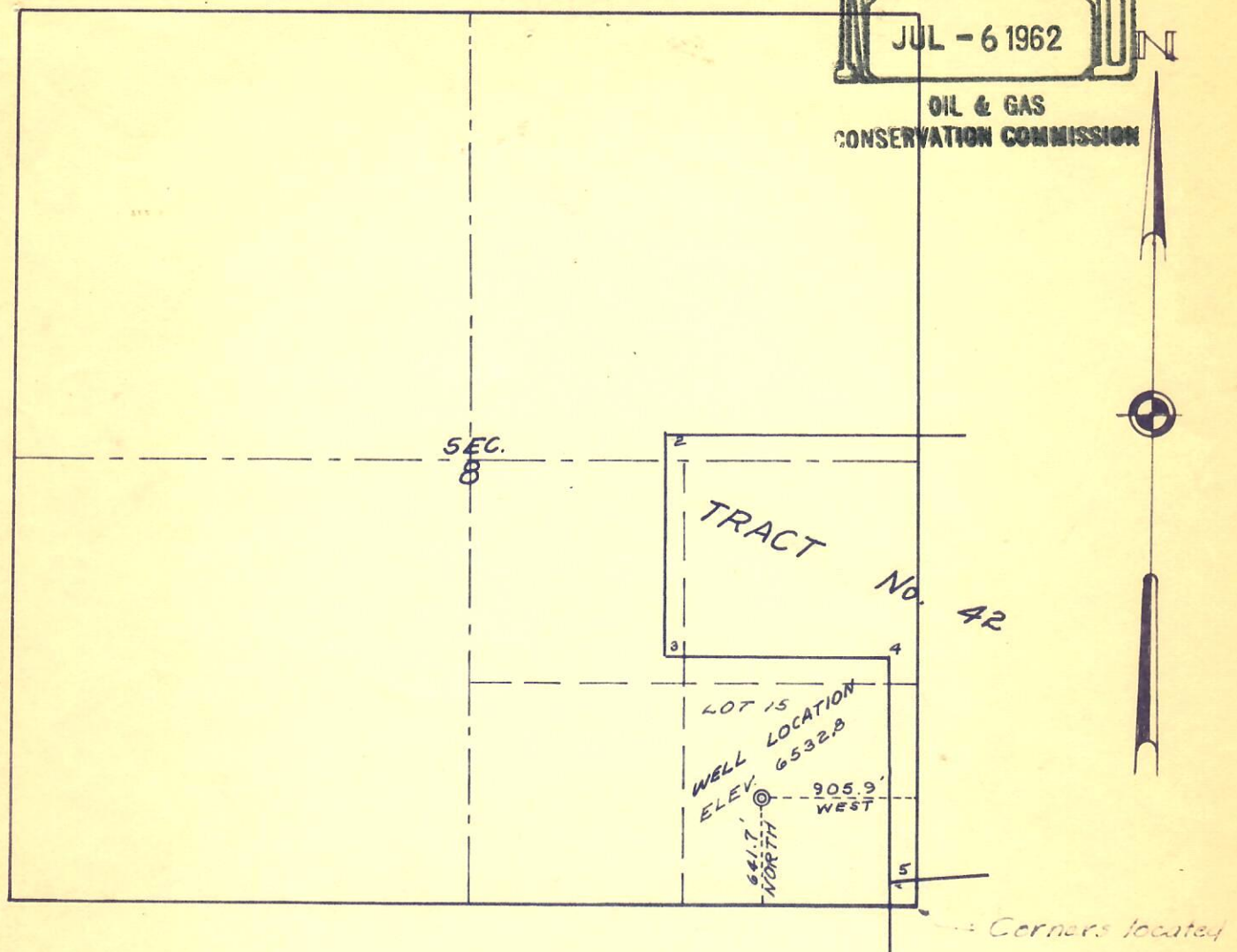


RECEIVED
JUL - 6 1962

OIL & GAS
CONSERVATION COMMISSION



WELL LOCATION

K. C. L. NO. 1 KRITSAS

KERN COUNTY LAND COMPANY

FARMINGTON, NEW MEXICO

SITUATED IN LOT 15 SECTION 8,

T. 1 N., R. 93 W. OF THE 6TH P.M.

RIO BLANCO COUNTY, COLO.

This is to certify that the "Well Location" shown on this plat was plotted from field notes of actual surveys made by me or under my supervision and that the same are true and correct to the best of my knowledge and belief.

DATE SURVEYED: JULY 2, 1962

SCALE 1 INCH = 1000 FEET

REF. POINT EAST ~ 120' ELEV. 6547.0

REF. POINT WEST ~ 230' ELEV. 6533.7

TOM WALKER
Glenwood Springs, Colorado
Reg. Land Surveyor
Certificate No. 597



00038613