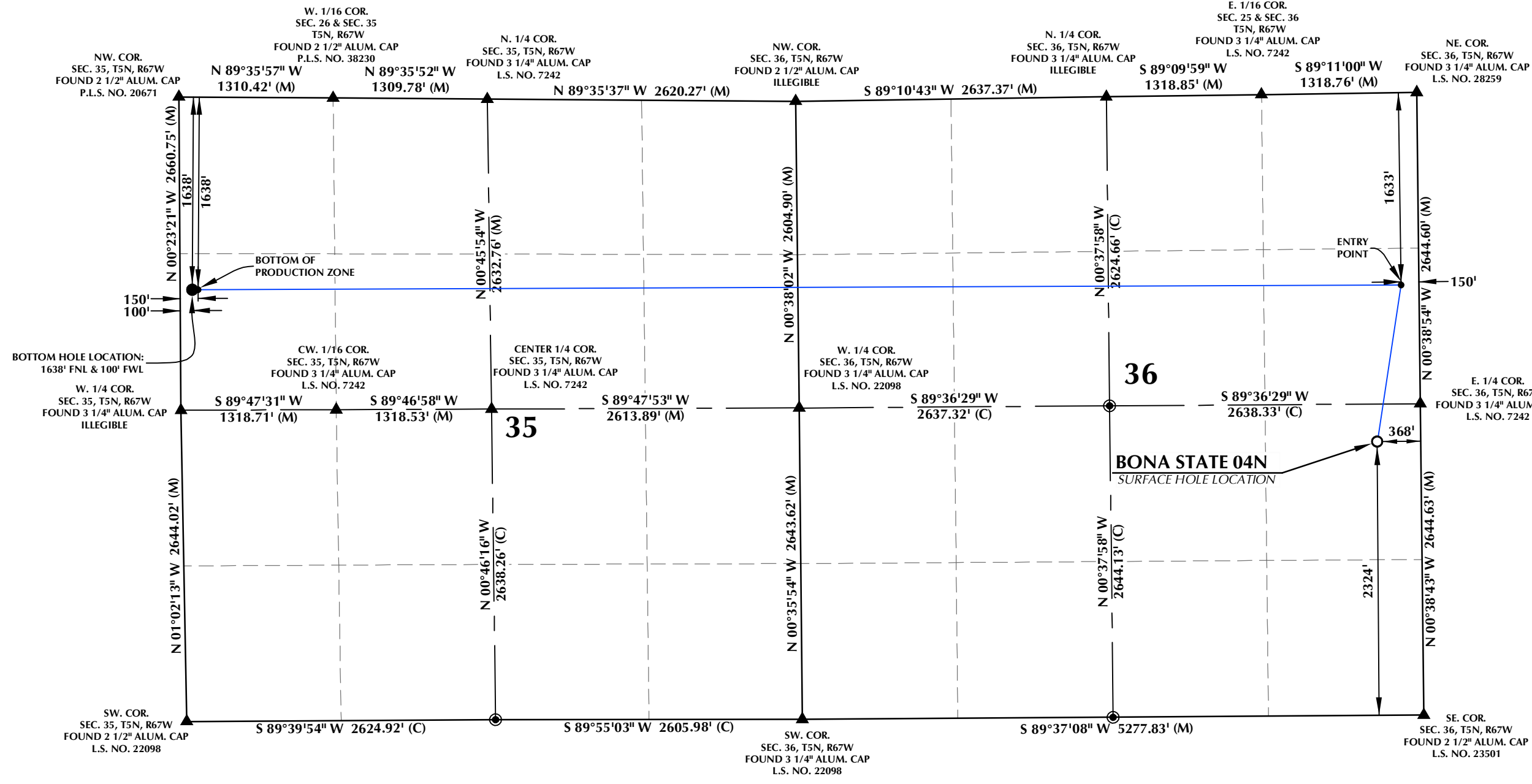


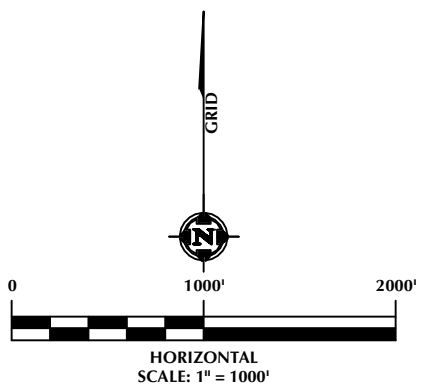
# T5N, R67W



**SURFACE HOLE LOCATION: NAD 83**  
**GROUND ELEVATION= 4870.4'**  
**LATITUDE= 40.355185°**  
**LONGITUDE= -104.833329°**  
**ENTRY POINT: NAD 83**  
**LATITUDE= 40.358840°**  
**LONGITUDE= -104.832564°**  
**BOTTOM OF PRODUCTION ZONE: NAD 83**  
**LATITUDE= 40.358928°**  
**LONGITUDE= -104.869245°**  
**BOTTOM HOLE LOCATION: NAD 83**  
**LATITUDE= 40.358928°**  
**LONGITUDE= -104.869424°**

**CERTIFICATE OF SURVEYOR:**  
 THIS IS TO CERTIFY THAT THE ABOVE PLAT WAS PREPARED FROM FIELD NOTES OF ACTUAL SURVEY MADE BY ME OR UNDER MY SUPERVISION AND TO THE BEST OF MY KNOWLEDGE AND BELIEF THIS CERTIFICATE DOES NOT REPRESENT A LAND SURVEY THAT OR IMPROVEMENT SURVEY PLAT AS DEFINED BY C.R.S. 38-51-102 AND CANNOT BE RELIED UPON TO DETERMINE OWNERSHIP.  
*Randall K. French*  
 RANDALL K. FRENCH  
 PROFESSIONAL LAND SURVEYOR  
 COLORADO REGISTRATION NUMBER 38512  
 4/26/24

- NOTES:**
- ▲ INDICATES SECTION CORNER.
  - INDICATES CALCULATED CORNER.
  - ELEVATION BASED ON NAVD88 (GEOID18).
  - BASIS OF BEARINGS DERIVED FROM COLORADO COORDINATE SYSTEM OF 1983, NORTH ZONE.
  - ALL MEASURED DISTANCES ARE GRID.  
COMBINED SCALE FACTOR: .99972653 CALCULATED FROM THE NE. CORNER OF SECTION 36, T5N, R67W.
  - OPERATOR: JEREMY GROVES / PDOP = 1.4
  - WELL FOOTAGES ARE MEASURED AT RIGHT ANGLES TO THE SECTION LINES.



**609 CONSULTING, LLC**

LOVELAND OFFICE  
 6706 North Franklin Avenue  
 Loveland, Colorado 80538  
 Phone 970-776-4331

SHERIDAN OFFICE  
 1095 Saberton Avenue  
 Sheridan, Wyoming 82801  
 Phone 307-674-0609

**Chevron**

PDC ENERGY  
 1099 18th Street  
 Granite Tower, Suite 1500  
 Denver, Colorado 80202

On August 7, 2023, Chevron acquired PDC Energy, Inc. ("PDC").  
 PDC is continuing to operate as a wholly owned subsidiary of Chevron.

<b>WELL PAD - BONA STATE 5N67W36 1-12</b>		
<b>BONA STATE 04N</b>		
<b>WELL LOCATION CERTIFICATE</b>		
2324' FSL & 368' FEL (NESE) (SURFACE HOLE LOCATION)		
1633' FNL & 150' FEL (SENE) (ENTRY POINT)		
LOCATED IN SECTION 36		
1638' FNL & 150' FWL (SWNW) (BOTTOM OF PRODUCTION ZONE)		
1638' FNL & 100' FWL (SWNW) (BOTTOM HOLE LOCATION)		
LOCATED IN SECTION 35		
T5N, R67W, 6TH P.M.		
WELD COUNTY, COLORADO		
DRAFTED BY:	SJM	CHECKED BY: RKF
DATE DRAFTED:	4/26/24	DATE SURVEYED: 11/8/22
REVISED:		FILE NAME: 17-252

K:\SYNERGY\RESOURCES\2017\2017\_252\_BONA\_STATE\_T5N\_R67W\_SEC\_36\PLATS\BONA\_STATE\BONA\_STATE.dwg, 4/24/2024 12:50:26 PM, smiller