

PDC ENERGY INC

Location: COLORADO Slot: SLOT#07 BOOTH STATE 07NA (2595FSL & 752FEL,SEC.25)
 Field: WELD COUNTY (NAD83/GRID) Well: BOOTH STATE 07NA
 Facility: SEC.25-T05N-R67W Wellbore: BOOTH STATE 07NA PWB

Plot reference wellpath is BOOTH STATE 07NA (REV-A.0) PWP
 Grid System: NAD83 / Lambert Colorado SP, Northern Zone (SPT), US feet
 True vertical depths are referenced to (4982GL+30KB@5012RKB) (RKB)
 North Reference: Grid north
 Reference wellpath measured depths are referenced to (4982GL+30KB@5012RKB) (RKB)
 Scale: True distance
 (4982GL+30KB@5012RKB) (RKB) to Mean Sea Level: 5012 feet
 Coordinates are in feet referenced to Slot
 Mean Sea Level to Ground level (At Slot: SLOT#07 BOOTH STATE 07NA (2595FSL & 752FEL,SEC.25)): 0 feet
 Depths are in feet
 Offset wellpath MDs are referenced to each path's default MD datum
 Created by: guenaler on 2024-05-26; Database: WA_Deriver

Location Information

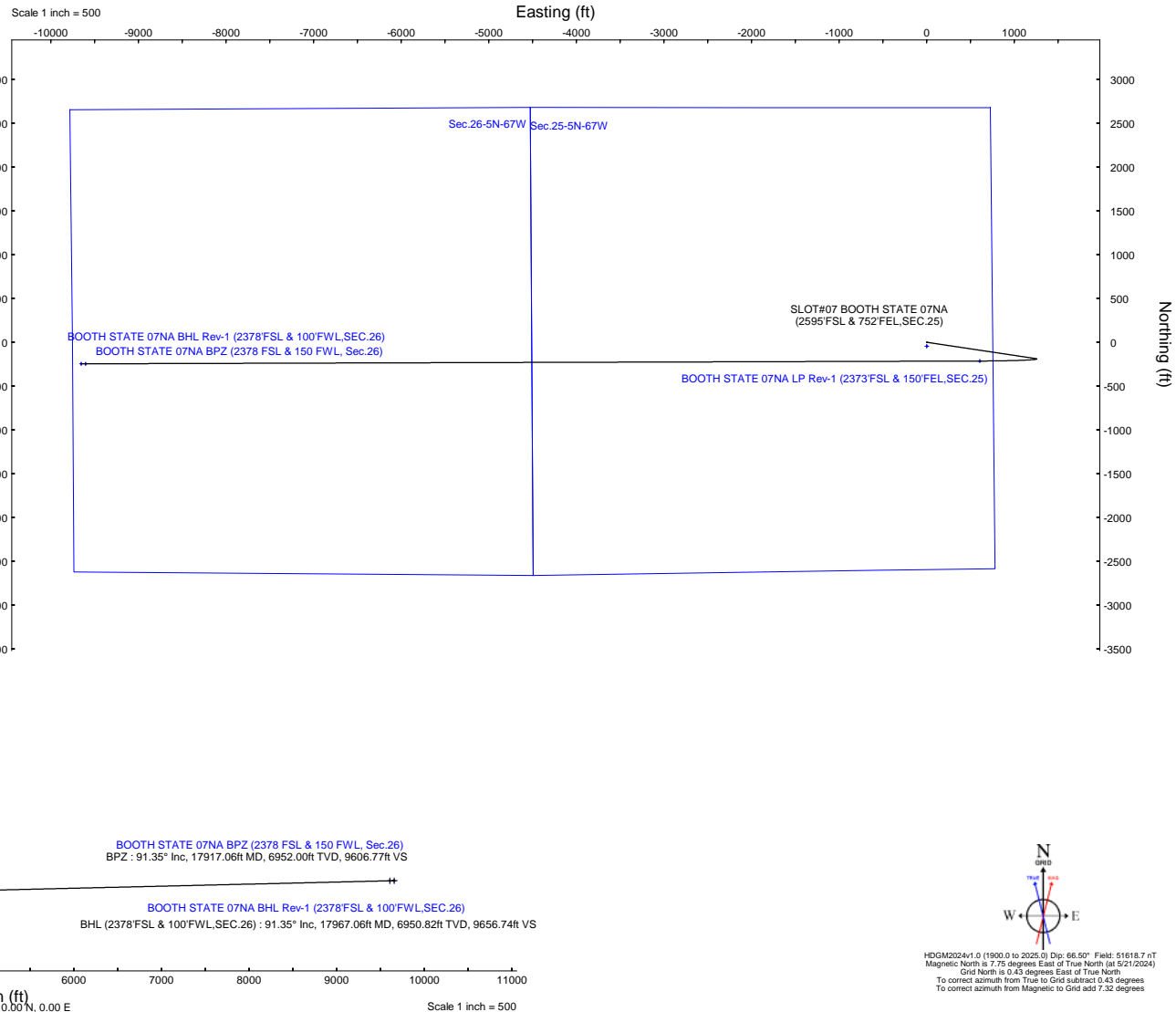
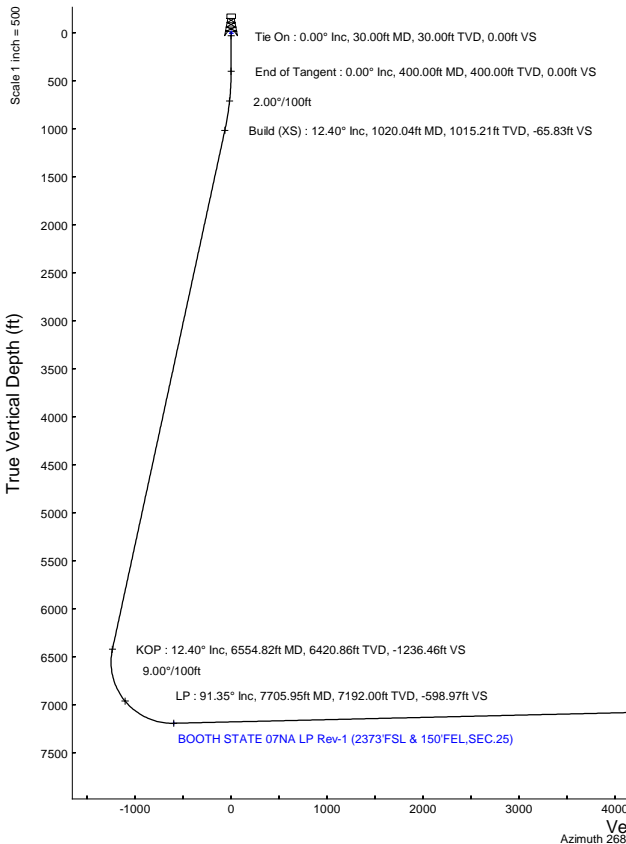
Facility Name		Grid East (US ft)	Grid North (US ft)	Latitude	Longitude	
SEC.25-T05N-R67W		3185351.829	1378676.217	40°22'14.4552"N	104°50'5.1720"W	
Slot	Local N (ft)	Local E (ft)	Grid East (US ft)	Grid North (US ft)	Latitude	Longitude
SLOT#07 BOOTH STATE 07NA (2595FSL & 752FEL,SEC.25)	-89.99	0.12	3185351.947	1378485.234	40°22'13.5660"N	104°50'5.1752"W
(4982GL+30KB@5012RKB) (RKB) to Ground level (At Slot: SLOT#07 BOOTH STATE 07NA (2595FSL & 752FEL,SEC.25))				5012ft		
Mean Sea Level to Ground level (At Slot: SLOT#07 BOOTH STATE 07NA (2595FSL & 752FEL,SEC.25))				0ft		
(4982GL+30KB@5012RKB) (RKB) to Mean Sea Level				5012ft		

Targets

Name	MD (ft)	TVD (ft)	Local N (ft)	Local E (ft)	Grid East (US ft)	Grid North (US ft)	Latitude	Longitude
Sec.25-5N-67W	N/A	2.00	-45.18	0.06	3185352.01	1378440.06	40°22'13.1196"N	104°50'5.1628"W
Sec.26-5N-67W	N/A	2.00	-45.18	0.06	3185352.01	1378440.06	40°22'13.1196"N	104°50'5.1628"W
BOOTH STATE 07NA BHL Rev-1 (2378FSL & 100FWL,SEC.26)	N/A	6952.00	-246.14	-9653.78	3175698.58	1378239.11	40°22'11.8308"N	104°52'9.9228"W
BOOTH STATE 07NA BPZ (2378 FSL & 150 FWL, Sec.26)	17917.06	6952.00	-245.78	-9603.62	3175748.73	1378239.46	40°22'11.8308"N	104°52'9.2748"W
BOOTH STATE 07NA LP Rev-1 (2373FSL & 150FEL,SEC.25)	7705.95	7192.00	-214.05	604.61	3185956.53	1378271.19	40°22'11.4060"N	104°49'57.3888"W

Well Profile Data

Design Comment	MD (ft)	Inc (°)	Az (°)	TVD (ft)	Local N (ft)	Local E (ft)	DLS (°/100ft)	VS (ft)
Tie On	30.00	0.000	98.512	30.00	0.00	0.00	0.00	0.00
End of Tangent	400.00	0.000	98.512	400.00	0.00	0.00	0.00	0.00
Build (XS)	1020.04	12.401	98.512	1015.21	-9.89	66.10	2.00	-65.83
KOP	6554.82	12.401	98.512	6420.86	-185.82	1241.59	0.00	-1236.46
LP	7705.95	91.347	269.822	7192.00	-214.05	604.61	9.00	-598.97
BPZ	17917.06	91.347	269.822	6952.00	-245.78	-9603.62	0.00	9606.77
BHL (2378FSL & 100FWL,SEC.26)	17967.06	91.347	269.822	6950.82	-245.94	-9653.61	0.00	9656.74



HDGM2024v1.0 (1900.0 to 2025.0) Dip: 66.50° Field: 51618.7 nT
 Magnetic North is 7.75 degrees East of True North (at 5/21/2024)
 Grid North is 0.43 degrees East of True North
 To correct azimuth from True to Grid subtract 0.43 degrees
 To correct azimuth from Magnetic to Grid add 7.32 degrees



Planned Wellpath Report

BOOTH STATE 07NA (REV-A.0) PWP
Page 1 of 8



REFERENCE WELLPATH IDENTIFICATION

Operator	PDC ENERGY INC	Well	BOOTH STATE 07NA
Field	WELD COUNTY (NAD83/GRID)	API/Legal	
Facility	SEC.25-T05N-R67W	Wellbore	BOOTH STATE 07NA PWB
Slot	SLOT#07 BOOTH STATE 07NA (2595'FSL & 752'FEL,SEC.25)		

REPORT SETUP INFORMATION

Projection System	NAD83 / Lambert Colorado SP, Northern Zone (501), US feet	Software System	WellArchitect® 6.0
North Reference	Grid	User	Guenaler
Scale	0.999959	Report Generated	5/25/2024 at 10:23:51 PM
Convergence at slot	0.43° East	Database	WA_Denver

WELLPATH LOCATION

	Local coordinates		Grid coordinates		Geographic coordinates	
	North[ft]	East[ft]	Easting[US ft]	Northing[US ft]	Latitude	Longitude
Slot Location	-89.99	0.12	3185351.95	1378485.23	40.3704350°	-104.8347720°
Facility Reference Pt			3185351.83	1378575.22	40.3706820°	-104.8347700°
Field Reference Pt			3296400.32	1413291.61	40.4630000°	-104.4347500°

WELLPATH DATUM

Calculation method	Minimum curvature	(4982'GL+30'KB@5012'RKB) (RKB) to Facility Vertical Datum	5012.00ft
Horizontal Reference Pt	Slot	(4982'GL+30'KB@5012'RKB) (RKB) to Mean Sea Level	5012.00ft
Vertical Reference Pt	(4982'GL+30'KB@5012'RKB) (RKB)	(4982'GL+30'KB@5012'RKB) (RKB) to Ground Level at Slot (SLOT#07 BOOTH STATE 07NA (2595'FSL & 752'FEL,SEC.25))	5012.00ft
MD Reference Pt	(4982'GL+30'KB@5012'RKB) (RKB)	Section Origin	N 0.00, E 0.00 ft
Field Vertical Reference	Mean Sea Level	Section Azimuth	268.54°



Planned Wellpath Report

BOOTH STATE 07NA (REV-A.0) PWP
Page 2 of 8


REFERENCE WELLPATH IDENTIFICATION

Operator	PDC ENERGY INC	Well	BOOTH STATE 07NA
Field	WELD COUNTY (NAD83/GRID)	API/Legal	
Facility	SEC.25-T05N-R67W	Wellbore	BOOTH STATE 07NA PWB
Slot	SLOT#07 BOOTH STATE 07NA (2595'FSL & 752'FEL,SEC.25)		

WELLPATH DATA (197 stations) † = interpolated, ‡ = extrapolated station

MD [ft]	Inclination [°]	Azimuth [°]	TVD [ft]	Vert Sect [ft]	North [ft]	East [ft]	Latitude	Longitude	DLS [°/100ft]	Comments
0.00†	0.000	98.512	0.00	0.00	0.00	0.00	40.3704350	-104.8347720	0.00	
30.00	0.000	98.512	30.00	0.00	0.00	0.00	40.3704350	-104.8347720	0.00	Tie On
130.00†	0.000	98.512	130.00	0.00	0.00	0.00	40.3704350	-104.8347720	0.00	
230.00†	0.000	98.512	230.00	0.00	0.00	0.00	40.3704350	-104.8347720	0.00	
330.00†	0.000	98.512	330.00	0.00	0.00	0.00	40.3704350	-104.8347720	0.00	
400.00	0.000	98.512	400.00	0.00	0.00	0.00	40.3704350	-104.8347720	0.00	End of Tangent
430.00†	0.600	98.512	430.00	-0.15	-0.02	0.16	40.3704349	-104.8347714	2.00	
530.00†	2.600	98.512	529.96	-2.90	-0.44	2.92	40.3704337	-104.8347615	2.00	
630.00†	4.600	98.512	629.75	-9.09	-1.37	9.13	40.3704311	-104.8347393	2.00	
730.00†	6.600	98.512	729.27	-18.70	-2.81	18.78	40.3704269	-104.8347047	2.00	
830.00†	8.600	98.512	828.39	-31.72	-4.77	31.86	40.3704213	-104.8346578	2.00	
902.57†	10.051	98.512	900.00	-43.31	-6.51	43.49	40.3704162	-104.8346161	2.00	PIERRE
930.00†	10.600	98.512	926.98	-48.15	-7.24	48.35	40.3704141	-104.8345987	2.00	
1020.04	12.401	98.512	1015.21	-65.83	-9.89	66.10	40.3704065	-104.8345350	2.00	Build (XS)
1024.94†	12.401	98.512	1020.00	-66.87	-10.05	67.14	40.3704060	-104.8345313	0.00	U PAWNEE
1030.00†	12.401	98.512	1024.94	-67.93	-10.21	68.22	40.3704056	-104.8345275	0.00	
1130.00†	12.401	98.512	1122.61	-89.09	-13.39	89.46	40.3703964	-104.8344513	0.00	
1230.00†	12.401	98.512	1220.27	-110.24	-16.57	110.69	40.3703872	-104.8343752	0.00	
1330.00†	12.401	98.512	1317.94	-131.39	-19.75	131.93	40.3703781	-104.8342991	0.00	
1430.00†	12.401	98.512	1415.61	-152.54	-22.92	153.17	40.3703689	-104.8342229	0.00	
1521.53†	12.401	98.512	1505.00	-171.90	-25.83	172.61	40.3703605	-104.8341533	0.00	U PAWNEE BASE
1530.00†	12.401	98.512	1513.27	-173.69	-26.10	174.41	40.3703598	-104.8341468	0.00	
1630.00†	12.401	98.512	1610.94	-194.84	-29.28	195.65	40.3703506	-104.8340707	0.00	
1730.00†	12.401	98.512	1708.61	-215.99	-32.46	216.88	40.3703414	-104.8339945	0.00	
1830.00†	12.401	98.512	1806.27	-237.14	-35.64	238.12	40.3703323	-104.8339184	0.00	
1930.00†	12.401	98.512	1903.94	-258.29	-38.82	259.36	40.3703231	-104.8338423	0.00	
2030.00†	12.401	98.512	2001.61	-279.44	-42.00	280.60	40.3703139	-104.8337661	0.00	
2130.00†	12.401	98.512	2099.27	-300.59	-45.17	301.84	40.3703048	-104.8336900	0.00	
2230.00†	12.401	98.512	2196.94	-321.74	-48.35	323.08	40.3702956	-104.8336139	0.00	
2330.00†	12.401	98.512	2294.61	-342.89	-51.53	344.31	40.3702865	-104.8335377	0.00	
2430.00†	12.401	98.512	2392.28	-364.04	-54.71	365.55	40.3702773	-104.8334616	0.00	
2530.00†	12.401	98.512	2489.94	-385.19	-57.89	386.79	40.3702681	-104.8333855	0.00	
2630.00†	12.401	98.512	2587.61	-406.34	-61.07	408.03	40.3702590	-104.8333093	0.00	
2730.00†	12.401	98.512	2685.28	-427.49	-64.25	429.27	40.3702498	-104.8332332	0.00	
2830.00†	12.401	98.512	2782.94	-448.64	-67.42	450.51	40.3702406	-104.8331571	0.00	
2930.00†	12.401	98.512	2880.61	-469.79	-70.60	471.74	40.3702315	-104.8330810	0.00	
3030.00†	12.401	98.512	2978.28	-490.94	-73.78	492.98	40.3702223	-104.8330048	0.00	
3130.00†	12.401	98.512	3075.94	-512.09	-76.96	514.22	40.3702132	-104.8329287	0.00	
3230.00†	12.401	98.512	3173.61	-533.24	-80.14	535.46	40.3702040	-104.8328526	0.00	
3330.00†	12.401	98.512	3271.28	-554.39	-83.32	556.70	40.3701948	-104.8327764	0.00	
3430.00†	12.401	98.512	3368.94	-575.55	-86.49	577.94	40.3701857	-104.8327003	0.00	
3530.00†	12.401	98.512	3466.61	-596.70	-89.67	599.17	40.3701765	-104.8326242	0.00	
3630.00†	12.401	98.512	3564.28	-617.85	-92.85	620.41	40.3701673	-104.8325480	0.00	
3730.00†	12.401	98.512	3661.95	-639.00	-96.03	641.65	40.3701582	-104.8324719	0.00	
3830.00†	12.401	98.512	3759.61	-660.15	-99.21	662.89	40.3701490	-104.8323958	0.00	



Planned Wellpath Report

BOOTH STATE 07NA (REV-A.0) PWP
Page 3 of 8



REFERENCE WELLPATH IDENTIFICATION			
Operator	PDC ENERGY INC	Well	BOOTH STATE 07NA
Field	WELD COUNTY (NAD83/GRID)	API/Legal	
Facility	SEC.25-T05N-R67W	Wellbore	BOOTH STATE 07NA PWB
Slot	SLOT#07 BOOTH STATE 07NA (2595'FSL & 752'FEL,SEC.25)		

WELLPATH DATA (197 stations) † = interpolated, ‡ = extrapolated station										
MD [ft]	Inclination [°]	Azimuth [°]	TVD [ft]	Vert Sect [ft]	North [ft]	East [ft]	Latitude	Longitude	DLS [°/100ft]	Comments
3902.07†	12.401	98.512	3830.00	-675.39	-101.50	678.19	40.3701424	-104.8323409	0.00	Parkman Sandstone
3930.00†	12.401	98.512	3857.28	-681.30	-102.39	684.13	40.3701398	-104.8323196	0.00	
4030.00†	12.401	98.512	3954.95	-702.45	-105.57	705.37	40.3701307	-104.8322435	0.00	
4130.00†	12.401	98.512	4052.61	-723.60	-108.74	726.60	40.3701215	-104.8321674	0.00	
4230.00†	12.401	98.512	4150.28	-744.75	-111.92	747.84	40.3701124	-104.8320912	0.00	
4330.00†	12.401	98.512	4247.95	-765.90	-115.10	769.08	40.3701032	-104.8320151	0.00	
4430.00†	12.401	98.512	4345.61	-787.05	-118.28	790.32	40.3700940	-104.8319390	0.00	
4431.42†	12.401	98.512	4347.00	-787.35	-118.33	790.62	40.3700939	-104.8319379	0.00	Sussex Sandstone
4530.00†	12.401	98.512	4443.28	-808.20	-121.46	811.56	40.3700849	-104.8318628	0.00	
4630.00†	12.401	98.512	4540.95	-829.35	-124.64	832.79	40.3700757	-104.8317867	0.00	
4730.00†	12.401	98.512	4638.62	-850.50	-127.82	854.03	40.3700665	-104.8317106	0.00	
4830.00†	12.401	98.512	4736.28	-871.65	-130.99	875.27	40.3700574	-104.8316344	0.00	
4930.00†	12.401	98.512	4833.95	-892.80	-134.17	896.51	40.3700482	-104.8315583	0.00	
5016.06†	12.401	98.512	4918.00	-911.00	-136.91	914.79	40.3700403	-104.8314928	0.00	Shannon Sandstone
5030.00†	12.401	98.512	4931.62	-913.95	-137.35	917.75	40.3700390	-104.8314822	0.00	
5130.00†	12.401	98.512	5029.28	-935.10	-140.53	938.99	40.3700299	-104.8314061	0.00	
5230.00†	12.401	98.512	5126.95	-956.25	-143.71	960.22	40.3700207	-104.8313299	0.00	
5330.00†	12.401	98.512	5224.62	-977.40	-146.89	981.46	40.3700116	-104.8312538	0.00	
5430.00†	12.401	98.512	5322.28	-998.55	-150.07	1002.70	40.3700024	-104.8311777	0.00	
5530.00†	12.401	98.512	5419.95	-1019.70	-153.24	1023.94	40.3699932	-104.8311015	0.00	
5630.00†	12.401	98.512	5517.62	-1040.85	-156.42	1045.18	40.3699841	-104.8310254	0.00	
5730.00†	12.401	98.512	5615.28	-1062.01	-159.60	1066.42	40.3699749	-104.8309493	0.00	
5830.00†	12.401	98.512	5712.95	-1083.16	-162.78	1087.65	40.3699657	-104.8308731	0.00	
5930.00†	12.401	98.512	5810.62	-1104.31	-165.96	1108.89	40.3699566	-104.8307970	0.00	
6030.00†	12.401	98.512	5908.29	-1125.46	-169.14	1130.13	40.3699474	-104.8307209	0.00	
6130.00†	12.401	98.512	6005.95	-1146.61	-172.32	1151.37	40.3699382	-104.8306447	0.00	
6230.00†	12.401	98.512	6103.62	-1167.76	-175.49	1172.61	40.3699291	-104.8305686	0.00	
6330.00†	12.401	98.512	6201.29	-1188.91	-178.67	1193.85	40.3699199	-104.8304925	0.00	
6430.00†	12.401	98.512	6298.95	-1210.06	-181.85	1215.08	40.3699107	-104.8304163	0.00	
6530.00†	12.401	98.512	6396.62	-1231.21	-185.03	1236.32	40.3699016	-104.8303402	0.00	
6554.82	12.401	98.512	6420.86	-1236.46	-185.82	1241.59	40.3698993	-104.8303213	0.00	KOP
6630.00†	5.811	108.931	6495.06	-1247.99	-188.25	1253.19	40.3698924	-104.8302798	9.00	
6730.00†	3.998	241.239	6594.88	-1249.64	-191.58	1254.93	40.3698832	-104.8302736	9.00	
6830.00†	12.655	261.224	6693.75	-1235.65	-194.93	1241.02	40.3698743	-104.8303236	9.00	
6930.00†	21.593	264.937	6789.22	-1206.36	-198.24	1211.80	40.3698658	-104.8304286	9.00	
7030.00†	30.566	266.536	6878.95	-1162.50	-201.40	1168.00	40.3698581	-104.8305858	9.00	
7130.00†	39.550	267.460	6960.73	-1105.13	-204.36	1110.70	40.3698511	-104.8307916	9.00	
7230.00†	48.540	268.086	7032.53	-1035.69	-207.02	1041.30	40.3698453	-104.8310407	9.00	
7330.00†	57.532	268.559	7092.60	-955.87	-209.34	961.51	40.3698405	-104.8313271	9.00	
7365.88†	60.759	268.706	7111.00	-925.07	-210.07	930.73	40.3698392	-104.8314376	9.00	Sharon Springs
7430.00†	66.526	268.946	7139.46	-867.64	-211.25	873.31	40.3698371	-104.8316437	9.00	
7444.29†	67.811	268.997	7145.00	-854.48	-211.48	860.14	40.3698368	-104.8316909	9.00	Niobrara A
7530.00†	75.520	269.283	7171.94	-773.18	-212.70	778.85	40.3698351	-104.8319827	9.00	
7630.00†	84.515	269.593	7189.26	-674.81	-213.66	680.47	40.3698345	-104.8323358	9.00	
7705.95	91.347	269.822	7192.00†	-598.97	-214.05	604.61	40.3698350	-104.8326080	9.00	LP



Planned Wellpath Report

BOOTH STATE 07NA (REV-A.0) PWP
Page 4 of 8



REFERENCE WELLPATH IDENTIFICATION			
Operator	PDC ENERGY INC	Well	BOOTH STATE 07NA
Field	WELD COUNTY (NAD83/GRID)	API/Legal	
Facility	SEC.25-T05N-R67W	Wellbore	BOOTH STATE 07NA PWB
Slot	SLOT#07 BOOTH STATE 07NA (2595'FSL & 752'FEL,SEC.25)		

WELLPATH DATA (197 stations) † = interpolated, ‡ = extrapolated station										
MD [ft]	Inclination [°]	Azimuth [°]	TVD [ft]	Vert Sect [ft]	North [ft]	East [ft]	Latitude	Longitude	DLS [°/100ft]	Comments
7730.00†	91.347	269.822	7191.43	-574.93	-214.12	580.57	40.3698353	-104.8326943	0.00	
7830.00†	91.347	269.822	7189.08	-474.98	-214.43	480.60	40.3698365	-104.8330530	0.00	
7930.00†	91.347	269.822	7186.73	-375.04	-214.75	380.63	40.3698377	-104.8334118	0.00	
8030.00†	91.347	269.822	7184.38	-275.09	-215.06	280.66	40.3698389	-104.8337706	0.00	
8130.00†	91.347	269.822	7182.03	-175.14	-215.37	180.69	40.3698401	-104.8341294	0.00	
8230.00†	91.347	269.822	7179.68	-75.20	-215.68	80.71	40.3698413	-104.8344881	0.00	
8330.00†	91.347	269.822	7177.33	24.75	-215.99	-19.26	40.3698425	-104.8348469	0.00	
8430.00†	91.347	269.822	7174.98	124.70	-216.30	-119.23	40.3698437	-104.8352057	0.00	
8530.00†	91.347	269.822	7172.63	224.65	-216.61	-219.20	40.3698450	-104.8355645	0.00	
8630.00†	91.347	269.822	7170.28	324.59	-216.92	-319.17	40.3698462	-104.8359233	0.00	
8730.00†	91.347	269.822	7167.93	424.54	-217.23	-419.15	40.3698474	-104.8362820	0.00	
8830.00†	91.347	269.822	7165.58	524.49	-217.54	-519.12	40.3698486	-104.8366408	0.00	
8930.00†	91.347	269.822	7163.23	624.44	-217.85	-619.09	40.3698498	-104.8369996	0.00	
9030.00†	91.347	269.822	7160.88	724.38	-218.16	-719.06	40.3698510	-104.8373584	0.00	
9130.00†	91.347	269.822	7158.53	824.33	-218.47	-819.03	40.3698522	-104.8377171	0.00	
9230.00†	91.347	269.822	7156.18	924.28	-218.79	-919.00	40.3698533	-104.8380759	0.00	
9330.00†	91.347	269.822	7153.83	1024.23	-219.10	-1018.98	40.3698545	-104.8384347	0.00	
9430.00†	91.347	269.822	7151.48	1124.17	-219.41	-1118.95	40.3698557	-104.8387935	0.00	
9530.00†	91.347	269.822	7149.13	1224.12	-219.72	-1218.92	40.3698569	-104.8391522	0.00	
9630.00†	91.347	269.822	7146.78	1324.07	-220.03	-1318.89	40.3698581	-104.8395110	0.00	
9705.63‡	91.347	269.822	7145.00	1399.66	-220.26	-1394.50	40.3698590	-104.8397823	0.00	Niobrara A
9730.00†	91.347	269.822	7144.43	1424.02	-220.34	-1418.86	40.3698593	-104.8398698	0.00	
9830.00†	91.347	269.822	7142.08	1523.96	-220.65	-1518.84	40.3698605	-104.8402286	0.00	
9930.00†	91.347	269.822	7139.73	1623.91	-220.96	-1618.81	40.3698617	-104.8405873	0.00	
10030.00†	91.347	269.822	7137.38	1723.86	-221.27	-1718.78	40.3698629	-104.8409461	0.00	
10130.00†	91.347	269.822	7135.03	1823.81	-221.58	-1818.75	40.3698641	-104.8413049	0.00	
10230.00†	91.347	269.822	7132.68	1923.75	-221.89	-1918.72	40.3698652	-104.8416637	0.00	
10330.00†	91.347	269.822	7130.32	2023.70	-222.20	-2018.70	40.3698664	-104.8420224	0.00	
10430.00†	91.347	269.822	7127.97	2123.65	-222.51	-2118.67	40.3698676	-104.8423812	0.00	
10530.00†	91.347	269.822	7125.62	2223.59	-222.83	-2218.64	40.3698688	-104.8427400	0.00	
10630.00†	91.347	269.822	7123.27	2323.54	-223.14	-2318.61	40.3698700	-104.8430988	0.00	
10730.00†	91.347	269.822	7120.92	2423.49	-223.45	-2418.58	40.3698712	-104.8434575	0.00	
10830.00†	91.347	269.822	7118.57	2523.44	-223.76	-2518.56	40.3698723	-104.8438163	0.00	
10930.00†	91.347	269.822	7116.22	2623.38	-224.07	-2618.53	40.3698735	-104.8441751	0.00	
11030.00†	91.347	269.822	7113.87	2723.33	-224.38	-2718.50	40.3698747	-104.8445339	0.00	
11130.00†	91.347	269.822	7111.52	2823.28	-224.69	-2818.47	40.3698759	-104.8448926	0.00	
11152.20†	91.347	269.822	7111.00	2845.47	-224.76	-2840.67	40.3698761	-104.8449723	0.00	Sharon Springs
11230.00†	91.347	269.822	7109.17	2923.23	-225.00	-2918.44	40.3698770	-104.8452514	0.00	
11330.00†	91.347	269.822	7106.82	3023.17	-225.31	-3018.41	40.3698782	-104.8456102	0.00	
11430.00†	91.347	269.822	7104.47	3123.12	-225.62	-3118.39	40.3698794	-104.8459690	0.00	
11530.00†	91.347	269.822	7102.12	3223.07	-225.93	-3218.36	40.3698805	-104.8463277	0.00	
11630.00†	91.347	269.822	7099.77	3323.02	-226.24	-3318.33	40.3698817	-104.8466865	0.00	
11730.00†	91.347	269.822	7097.42	3422.96	-226.55	-3418.30	40.3698829	-104.8470453	0.00	
11830.00†	91.347	269.822	7095.07	3522.91	-226.87	-3518.27	40.3698841	-104.8474041	0.00	
11930.00†	91.347	269.822	7092.72	3622.86	-227.18	-3618.25	40.3698852	-104.8477628	0.00	



Planned Wellpath Report

BOOTH STATE 07NA (REV-A.0) PWP
Page 5 of 8



REFERENCE WELLPATH IDENTIFICATION			
Operator	PDC ENERGY INC	Well	BOOTH STATE 07NA
Field	WELD COUNTY (NAD83/GRID)	API/Legal	
Facility	SEC.25-T05N-R67W	Wellbore	BOOTH STATE 07NA PWB
Slot	SLOT#07 BOOTH STATE 07NA (2595'FSL & 752'FEL,SEC.25)		

WELLPATH DATA (197 stations) † = interpolated, ‡ = extrapolated station										
MD [ft]	Inclination [°]	Azimuth [°]	TVD [ft]	Vert Sect [ft]	North [ft]	East [ft]	Latitude	Longitude	DLS [°/100ft]	Comments
12030.00†	91.347	269.822	7090.37	3722.81	-227.49	-3718.22	40.3698864	-104.8481216	0.00	
12130.00†	91.347	269.822	7088.02	3822.75	-227.80	-3818.19	40.3698875	-104.8484804	0.00	
12230.00†	91.347	269.822	7085.67	3922.70	-228.11	-3918.16	40.3698887	-104.8488392	0.00	
12330.00†	91.347	269.822	7083.32	4022.65	-228.42	-4018.13	40.3698899	-104.8491980	0.00	
12430.00†	91.347	269.822	7080.97	4122.59	-228.73	-4118.11	40.3698910	-104.8495567	0.00	
12530.00†	91.347	269.822	7078.62	4222.54	-229.04	-4218.08	40.3698922	-104.8499155	0.00	
12630.00†	91.347	269.822	7076.27	4322.49	-229.35	-4318.05	40.3698933	-104.8502743	0.00	
12730.00†	91.347	269.822	7073.92	4422.44	-229.66	-4418.02	40.3698945	-104.8506331	0.00	
12830.00†	91.347	269.822	7071.57	4522.38	-229.97	-4517.99	40.3698957	-104.8509918	0.00	
12930.00†	91.347	269.822	7069.21	4622.33	-230.28	-4617.96	40.3698968	-104.8513506	0.00	
13030.00†	91.347	269.822	7066.86	4722.28	-230.59	-4717.94	40.3698980	-104.8517094	0.00	
13130.00†	91.347	269.822	7064.51	4822.23	-230.91	-4817.91	40.3698991	-104.8520682	0.00	
13230.00†	91.347	269.822	7062.16	4922.17	-231.22	-4917.88	40.3699003	-104.8524269	0.00	
13330.00†	91.347	269.822	7059.81	5022.12	-231.53	-5017.85	40.3699014	-104.8527857	0.00	
13430.00†	91.347	269.822	7057.46	5122.07	-231.84	-5117.82	40.3699026	-104.8531445	0.00	
13530.00†	91.347	269.822	7055.11	5222.02	-232.15	-5217.80	40.3699037	-104.8535033	0.00	
13630.00†	91.347	269.822	7052.76	5321.96	-232.46	-5317.77	40.3699049	-104.8538620	0.00	
13730.00†	91.347	269.822	7050.41	5421.91	-232.77	-5417.74	40.3699060	-104.8542208	0.00	
13830.00†	91.347	269.822	7048.06	5521.86	-233.08	-5517.71	40.3699072	-104.8545796	0.00	
13930.00†	91.347	269.822	7045.71	5621.81	-233.39	-5617.68	40.3699083	-104.8549384	0.00	
14030.00†	91.347	269.822	7043.36	5721.75	-233.70	-5717.66	40.3699094	-104.8552971	0.00	
14130.00†	91.347	269.822	7041.01	5821.70	-234.01	-5817.63	40.3699106	-104.8556559	0.00	
14230.00†	91.347	269.822	7038.66	5921.65	-234.32	-5917.60	40.3699117	-104.8560147	0.00	
14330.00†	91.347	269.822	7036.31	6021.60	-234.63	-6017.57	40.3699129	-104.8563735	0.00	
14430.00†	91.347	269.822	7033.96	6121.54	-234.95	-6117.54	40.3699140	-104.8567322	0.00	
14530.00†	91.347	269.822	7031.61	6221.49	-235.26	-6217.52	40.3699151	-104.8570910	0.00	
14630.00†	91.347	269.822	7029.26	6321.44	-235.57	-6317.49	40.3699163	-104.8574498	0.00	
14730.00†	91.347	269.822	7026.91	6421.38	-235.88	-6417.46	40.3699174	-104.8578086	0.00	
14830.00†	91.347	269.822	7024.56	6521.33	-236.19	-6517.43	40.3699185	-104.8581674	0.00	
14930.00†	91.347	269.822	7022.21	6621.28	-236.50	-6617.40	40.3699197	-104.8585261	0.00	
15030.00†	91.347	269.822	7019.86	6721.23	-236.81	-6717.37	40.3699208	-104.8588849	0.00	
15130.00†	91.347	269.822	7017.51	6821.17	-237.12	-6817.35	40.3699219	-104.8592437	0.00	
15230.00†	91.347	269.822	7015.16	6921.12	-237.43	-6917.32	40.3699231	-104.8596025	0.00	
15330.00†	91.347	269.822	7012.81	7021.07	-237.74	-7017.29	40.3699242	-104.8599612	0.00	
15430.00†	91.347	269.822	7010.46	7121.02	-238.05	-7117.26	40.3699253	-104.8603200	0.00	
15530.00†	91.347	269.822	7008.11	7220.96	-238.36	-7217.23	40.3699265	-104.8606788	0.00	
15630.00†	91.347	269.822	7005.75	7320.91	-238.67	-7317.21	40.3699276	-104.8610376	0.00	
15730.00†	91.347	269.822	7003.40	7420.86	-238.99	-7417.18	40.3699287	-104.8613963	0.00	
15830.00†	91.347	269.822	7001.05	7520.81	-239.30	-7517.15	40.3699298	-104.8617551	0.00	
15930.00†	91.347	269.822	6998.70	7620.75	-239.61	-7617.12	40.3699309	-104.8621139	0.00	
16030.00†	91.347	269.822	6996.35	7720.70	-239.92	-7717.09	40.3699321	-104.8624727	0.00	
16130.00†	91.347	269.822	6994.00	7820.65	-240.23	-7817.07	40.3699332	-104.8628314	0.00	
16230.00†	91.347	269.822	6991.65	7920.60	-240.54	-7917.04	40.3699343	-104.8631902	0.00	
16330.00†	91.347	269.822	6989.30	8020.54	-240.85	-8017.01	40.3699354	-104.8635490	0.00	
16430.00†	91.347	269.822	6986.95	8120.49	-241.16	-8116.98	40.3699365	-104.8639078	0.00	



Planned Wellpath Report

BOOTH STATE 07NA (REV-A.0) PWP
Page 6 of 8



REFERENCE WELLPATH IDENTIFICATION			
Operator	PDC ENERGY INC	Well	BOOTH STATE 07NA
Field	WELD COUNTY (NAD83/GRID)	API/Legal	
Facility	SEC.25-T05N-R67W	Wellbore	BOOTH STATE 07NA PWB
Slot	SLOT#07 BOOTH STATE 07NA (2595'FSL & 752'FEL,SEC.25)		

WELLPATH DATA (197 stations) † = interpolated, ‡ = extrapolated station										
MD [ft]	Inclination [°]	Azimuth [°]	TVD [ft]	Vert Sect [ft]	North [ft]	East [ft]	Latitude	Longitude	DLS [°/100ft]	Comments
16530.00†	91.347	269.822	6984.60	8220.44	-241.47	-8216.95	40.3699377	-104.8642665	0.00	
16630.00†	91.347	269.822	6982.25	8320.38	-241.78	-8316.92	40.3699388	-104.8646253	0.00	
16730.00†	91.347	269.822	6979.90	8420.33	-242.09	-8416.90	40.3699399	-104.8649841	0.00	
16830.00†	91.347	269.822	6977.55	8520.28	-242.40	-8516.87	40.3699410	-104.8653429	0.00	
16930.00†	91.347	269.822	6975.20	8620.23	-242.71	-8616.84	40.3699421	-104.8657017	0.00	
17030.00†	91.347	269.822	6972.85	8720.17	-243.03	-8716.81	40.3699432	-104.8660604	0.00	
17130.00†	91.347	269.822	6970.50	8820.12	-243.34	-8816.78	40.3699443	-104.8664192	0.00	
17230.00†	91.347	269.822	6968.15	8920.07	-243.65	-8916.76	40.3699454	-104.8667780	0.00	
17330.00†	91.347	269.822	6965.80	9020.02	-243.96	-9016.73	40.3699465	-104.8671368	0.00	
17430.00†	91.347	269.822	6963.45	9119.96	-244.27	-9116.70	40.3699476	-104.8674955	0.00	
17530.00†	91.347	269.822	6961.10	9219.91	-244.58	-9216.67	40.3699487	-104.8678543	0.00	
17630.00†	91.347	269.822	6958.75	9319.86	-244.89	-9316.64	40.3699498	-104.8682131	0.00	
17730.00†	91.347	269.822	6956.40	9419.81	-245.20	-9416.62	40.3699509	-104.8685719	0.00	
17830.00†	91.347	269.822	6954.05	9519.75	-245.51	-9516.59	40.3699520	-104.8689306	0.00	
17917.06	91.347	269.822	6952.00 [‡]	9606.77	-245.78	-9603.62	40.3699530	-104.8692430	0.00	BPZ
17930.00†	91.347	269.822	6951.70	9619.70	-245.82	-9616.56	40.3699531	-104.8692894	0.00	
17967.06	91.347	269.822	6950.82	9656.74	-245.94	-9653.61	40.3699535	-104.8694224	0.00	BHL (2378'FSL & 100'FWL,SEC.26)

TARGETS									
Name	MD [ft]	TVD [ft]	North [ft]	East [ft]	Grid East [US ft]	Grid North [US ft]	Latitude	Longitude	Shape
Sec.25-5N-67W	N/A	2.00	-45.18	0.06	3185352.01	1378440.06	40.3703110	-104.8347730	polygon
	2D Polygon: dimensions not calculated								
Sec.26-5N-67W	N/A	2.00	-45.18	0.06	3185352.01	1378440.06	40.3703110	-104.8347730	polygon
	2D Polygon: dimensions not calculated								
BOOTH STATE 07NA BHL Rev-1 (2378'FSL & 100'FWL,SEC.26)	N/A	6952.00	-246.14	-9653.78	3175698.58	1378239.11	40.3699530	-104.8694230	point
2) BOOTH STATE 07NA BPZ (2378 FSL & 150 FWL, Sec.26)	17917.06	6952.00	-245.78	-9603.62	3175748.73	1378239.46	40.3699530	-104.8692430	point
1) BOOTH STATE 07NA LP Rev-1 (2373'FSL & 150'FEL,SEC.25)	7705.95	7192.00	-214.05	604.61	3185956.53	1378271.19	40.3698350	-104.8326080	point



Planned Wellpath Report

BOOTH STATE 07NA (REV-A.0) PWP
Page 7 of 8



REFERENCE WELLPATH IDENTIFICATION			
Operator	PDC ENERGY INC	Well	BOOTH STATE 07NA
Field	WELD COUNTY (NAD83/GRID)	API/Legal	
Facility	SEC.25-T05N-R67W	Wellbore	BOOTH STATE 07NA PWB
Slot	SLOT#07 BOOTH STATE 07NA (2595'FSL & 752'FEL,SEC.25)		

SURVEY PROGRAM - Ref Wellbore: BOOTH STATE 07NA PWB Ref Wellpath: BOOTH STATE 07NA (REV-A.0) PWP				
Start MD [ft]	End MD [ft]	Positional Uncertainty Model	Log Name/Comment	Wellbore
30.00	2000.00	OWSG MWD rev2 - Standard		BOOTH STATE 07NA PWB
2000.00	17967.06	OWSG MWD rev2 (MS+IFR1)		BOOTH STATE 07NA PWB



Planned Wellpath Report

BOOTH STATE 07NA (REV-A.0) PWP
Page 8 of 8



REFERENCE WELLPATH IDENTIFICATION			
Operator	PDC ENERGY INC	Well	BOOTH STATE 07NA
Field	WELD COUNTY (NAD83/GRID)	API/Legal	
Facility	SEC.25-T05N-R67W	Wellbore	BOOTH STATE 07NA PWB
Slot	SLOT#07 BOOTH STATE 07NA (2595'FSL & 752'FEL,SEC.25)		

WELLPATH COMMENTS				
MD [ft]	Inclination [°]	Azimuth [°]	TVD [ft]	Comment
902.57	10.051	98.512	900.00	PIERRE
1024.94	12.401	98.512	1020.00	U PAWNEE
1521.53	12.401	98.512	1505.00	U PAWNEE BASE
3902.07	12.401	98.512	3830.00	Parkman Sandstone
4431.42	12.401	98.512	4347.00	Sussex Sandstone
5016.06	12.401	98.512	4918.00	Shannon Sandstone
7365.88	60.759	268.706	7111.00	Sharon Springs
7444.29	67.811	268.997	7145.00	Niobrara A
9705.63	91.347	269.822	7145.00	Niobrara A
11152.20	91.347	269.822	7111.00	Sharon Springs

DESIGN COMMENTS				
MD [ft]	Inclination [°]	Azimuth [°]	TVD [ft]	Comment
30.00	0.000	98.512	30.00	Tie On
400.00	0.000	98.512	400.00	End of Tangent
1020.04	12.401	98.512	1015.21	Build (XS)
6554.82	12.401	98.512	6420.86	KOP
7705.95	91.347	269.822	7192.00	LP
17917.06	91.347	269.822	6952.00	BPZ
17967.06	91.347	269.822	6950.82	BHL (2378'FSL & 100'FWL,SEC.26)



Closest Approach Clearance Summary Report

BOOTH STATE 07NA (REV-A.0) PWP - SPE WPTS Stop Drilling HSE Risk (2017)
Page 1 of 5



REFERENCE WELLPATH IDENTIFICATION

Operator	PDC ENERGY INC	Well	BOOTH STATE 07NA
Field	WELD COUNTY (NAD83/GRID)	API/Legal	
Facility	SEC.25-T05N-R67W	Wellbore	BOOTH STATE 07NA PWB
Slot	SLOT#07 BOOTH STATE 07NA (2595'FSL & 752'FEL,SEC.25)		

REPORT SETUP INFORMATION

Projection System	NAD83 / Lambert Colorado SP, Northern Zone (501), US feet	Software System	WellArchitect® 6.0
North Reference	Grid	User	Guenaler
Scale	0.999959	Report Generated	5/25/2024 at 10:54:44 PM
Convergence at slot	0.43° East	Database	WA_Denver

WELLPATH LOCATION

	Local coordinates		Grid coordinates		Geographic coordinates	
	North[ft]	East[ft]	Easting[US ft]	Northing[US ft]	Latitude	Longitude
Slot Location	-89.99	0.12	3185351.95	1378485.23	40.3704350°	-104.8347720°
Facility Reference Pt			3185351.83	1378575.22	40.3706820°	-104.8347700°
Field Reference Pt			3296400.32	1413291.61	40.4630000°	-104.4347500°

WELLPATH DATUM

Calculation method	Minimum Curvature	(4982'GL+30'KB@5012'RKB) (RKB) to Facility Vertical Datum	5012.00ft
Horizontal Reference Pt	Slot	(4982'GL+30'KB@5012'RKB) (RKB) to Mean Sea Level	5012.00ft
Vertical Reference Pt	(4982'GL+30'KB@5012'RKB) (RKB)	(4982'GL+30'KB@5012'RKB) (RKB) to Ground Level at Slot (SLOT#07 BOOTH STATE 07NA (2595'FSL & 752'FEL,SEC.25))	5012.00ft
MD Reference Pt	(4982'GL+30'KB@5012'RKB) (RKB)		
Field Vertical Reference	Mean Sea Level		

POSITIONAL UNCERTAINTY CALCULATION SETTINGS

Ellipse Confidence Limit	3.50 Std Dev	Ellipse Start MD	30.00ft	Surface Position Uncertainty	included
Declination	7.75° East of TN	Dip Angle	66.50°	Mag Field Strength	51619 nT
Slot Surface Uncertainty @1SD		Horizontal	0.100ft	Vertical	1.000ft
Facility Surface Uncertainty @1SD		Horizontal	8.200ft	Vertical	3.000ft

Positional Uncertainty values in the WELLPATH DATA table are the projection of the ellipsoid of uncertainty onto the vertical and horizontal planes



Closest Approach Clearance Summary Report

BOOTH STATE 07NA (REV-A.0) PWP - SPE WPTS Stop Drilling HSE Risk (2017)
Page 2 of 5



REFERENCE WELLPATH IDENTIFICATION			
Operator	PDC ENERGY INC	Well	BOOTH STATE 07NA
Field	WELD COUNTY (NAD83/GRID)	API/Legal	
Facility	SEC.25-T05N-R67W	Wellbore	BOOTH STATE 07NA PWB
Slot	SLOT#07 BOOTH STATE 07NA (2595'FSL & 752'FEL,SEC.25)		

PROXIMITY-SCAN RULE			
Rule Name	SPE WPTS Stop Drilling HSE Risk (2017)	Rule Based On	Ratio
Plane of Rule	Closest Approach	Threshold Value	1.00
Include Casing & Hole Size	yes	Apply Cone of Safety	no

SURVEY PROGRAM - Ref Wellbore: BOOTH STATE 07NA PWB Ref Wellpath: BOOTH STATE 07NA (REV-A.0) PWP				
Start MD [ft]	End MD [ft]	Positional Uncertainty Model	Log Name/Comment	Wellbore
30.00	2000.00	OWSG MWD rev2 - Standard		BOOTH STATE 07NA PWB
2000.00	17967.06	OWSG MWD rev2 (MS+IFR1)		BOOTH STATE 07NA PWB



Closest Approach Clearance Summary Report

BOOTH STATE 07NA (REV-A.0) PWP - SPE WPTS Stop Drilling HSE Risk (2017)
Page 3 of 5



REFERENCE WELLPATH IDENTIFICATION			
Operator	PDC ENERGY INC	Well	BOOTH STATE 07NA
Field	WELD COUNTY (NAD83/GRID)	API/Legal	
Facility	SEC.25-T05N-R67W	Wellbore	BOOTH STATE 07NA PWB
Slot	SLOT#07 BOOTH STATE 07NA (2595'FSL & 752'FEL,SEC.25)		

CALCULATION RANGE & CUTOFF		
From: 30.00ft MD	To: 17967.06ft MD	C-C Cutoff: (none)

OFFSET WELL CLEARANCE SUMMARY (54 Offset Wellpaths selected) Ratios are calculated in Closest Approach plane												
Offset Facility	Offset Slot	Offset Well	Offset Wellbore	Offset Wellpath	Wellbore Status	C-C Clearance Distance			Rule Separation Ratio			
						Ref MD [ft]	Min C-C Clear Dist [ft]	Diverging from MD [ft]	Ref MD of Min Ratio [ft]	Min Ratio	Min Ratio Dvrg from [ft]	Rule Status
SEC.25-T05N-R67W	SLOT#21 BOOTH N #25-11 (05-123-22680) PA	BOOTH N #25-11 (05-123-22680) PA	BOOTH N #25-11 AWB	BOOTH N #25-11 AWP (PA)	Abandoned	10884.62	241.53	10884.62	10884.43	0.03	10884.43	FAIL
SEC.26-T05N-R67W	SLOT#10 BOOTH #13-26 (05-123-17941) TA	BOOTH #13-26	BOOTH #13-26 AWB	BOOTH #13-26 AWP	Abandoned	17214.85	302.84	17214.85	17214.55	0.04	17214.55	FAIL
SEC.25-T05N-R67W	SLOT#20 BOOTH N #25-9 (05-123-21924) PA	BOOTH N #25-9 (05-123-21924) PA	BOOTH N #25-9 AWB	BOOTH N #25-9 AWP (PA)	Abandoned	8146.86	325.82	8146.86	8146.51	0.04	8146.51	FAIL
SEC.25-T05N-R67W	SLOT#26 BOOTH N #25-10 (05-123-21925) PA	BOOTH N #25-10 (05-123-21925) PA	BOOTH N #25-10 AWB	BOOTH N #25-10 AWP (PA)	Abandoned	9556.17	504.30	9556.17	9555.34	0.06	9555.34	FAIL
SEC.25-T05N-R67W	SLOT#27 BOOTH N #25-12 (05-123-22681) PA	BOOTH N #25-12 (05-123-22681) PA	BOOTH N #25-12 AWB	BOOTH N #25-12 AWP (PA)	Abandoned	12319.55	563.50	12319.55	12318.50	0.07	12318.50	FAIL
SEC.26-T05N-R67W	SLOT#03 Booth N #25-32D (05-123-31660) PR	Booth N #25-32D	Booth N #25-32D AWB	Booth N #25-32D AWP (PR)	Producing / injecting	12715.53	438.88	12715.53	12690.19	0.07	12690.19	FAIL
SEC.26-T05N-R67W	SLOT#09 BOOTH #33-26 (05-123-18228) PA	BOOTH #33-26	BOOTH #33-26 AWB	BOOTH #33-26 AWP	Abandoned	14608.76	632.10	14608.76	14607.45	0.07	14607.45	FAIL
SEC.25-T05N-R67W	SLOT#28 BOOTH #25-14 (05-123-17369) PA	BOOTH #25-14 (05-123-17369) PA	BOOTH #25-14 AWB	BOOTH #25-14 AWP (PA)	Abandoned	30.00	548.99	8450.77	8450.77	0.08	8450.77	FAIL
SEC.26-T05N-R67W	SLOT#12 BLEHM #2 (05-123-11006) PA	BLEHM #2	BLEHM #2 AWB	BLEHM #2 AWP	Drilling	16112.01	882.01	16112.01	16109.46	0.10	16109.46	FAIL
SEC.25-T05N-R67W	SLOT#19 BOOTH N #25-23 (05-123-23167) PA	BOOTH N #25-23 (05-123-23167) PA	BOOTH N #25-23 AWB	BOOTH N #25-23 AWP (PA)	Abandoned	8720.08	926.54	8720.08	8717.26	0.11	8717.26	FAIL
SEC.26-T05N-R67W	SLOT#11 BLEHM N #26-8 (05-123-23344) SI	BLEHM N #26-8	BLEHM N #26-8 AWB	BLEHM N #26-8 AWP	Producing / injecting	13608.57	1011.11	13608.57	13605.22	0.12	13605.22	FAIL
SEC.25-T05N-R67W	SLOT#13 BOOTH N #25-25 (05-123-22706) PA	BOOTH N #25-25 (05-123-22706) PA	BOOTH N #25-25 AWB	BOOTH N #25-25 AWP (PA)	Abandoned	11581.50	1013.57	11581.50	11578.10	0.12	11578.10	FAIL
SEC.25-T05N-R67W	SLOT#15 BOOTH N #25-13 (05-123-22708) TA	BOOTH N #25-13 (05-123-22708) TA	BOOTH N #25-13 AWB	BOOTH N #25-13 AWP (TA)	Abandoned	11551.94	1014.91	11551.94	11548.53	0.12	11548.53	FAIL
SEC.25-T05N-R67W	SLOT#29 BOOTH #N 25-6 (05-123-18083) SI	BOOTH #N 25-6 (05-123-18083) SI	BOOTH #N 25-6 AWB	BOOTH #N 25-6 AWP (SI)	Producing / injecting	10953.63	1031.09	10953.63	10950.15	0.12	10950.15	FAIL
SEC.25-T05N-R67W	SLOT#33 BOOTH #N 25-5 (05-123-18082) SI	BOOTH #N 25-5 (05-123-18082) SI	BOOTH #N 25-5 AWB	BOOTH #N 25-5 AWP (SI)	Producing / injecting	12333.49	1085.32	12333.49	12329.63	0.12	12329.63	FAIL
SEC.26-T05N-R67W	SLOT#14 VETTER #26-13 (05-123-19998) PA	VETTER #26-13	VETTER #26-13 AWB	VETTER #26-13 AWP	Abandoned	14949.30	1106.82	14949.30	14945.29	0.13	14945.29	FAIL
SEC.26-T05N-R67W	SLOT#15 BLEHM N #26-5 (05-123-19492) PA	BLEHM N #26-5	BLEHM N #26-5 AWB	BLEHM N #26-5 AWP	Abandoned	17242.25	1100.39	17242.25	17238.26	0.13	17238.26	FAIL
SEC.26-T05N-R67W	SLOT#17 BLEHM #1 (05-123-10692) TA	BLEHM #1	BLEHM #1 AWB	BLEHM #1 AWP	Abandoned	16854.48	1121.09	16854.48	16850.31	0.13	16850.31	FAIL
SEC.25-T05N-R67W	SLOT#32 BOOTH #25-15 (05-123-28106) PR	BOOTH #25-15 (05-123-28106) PR	BOOTH #25-15 AWB	BOOTH #25-15 AWP (PR)	Producing / injecting	30.00	1542.53	9030.00	9020.87	0.18	9020.87	FAIL
SEC.25-T05N-R67W	SLOT#34 BOOTH N #25-15 (05-123-21926) PA	BOOTH N #25-15 (05-123-21926) PA	BOOTH N #25-15 AWB	BOOTH N #25-15 AWP (PA)	Abandoned	9510.07	1555.87	9510.07	9502.05	0.18	9502.05	FAIL
SEC.26-T05N-R67W	SLOT#06 BLEHM #26-17 (05-123-23036) TA	BLEHM #26-17	BLEHM #26-17 AWB	BLEHM #26-17 AWP	Abandoned	14188.39	1704.53	14188.39	14178.87	0.20	14178.87	FAIL
SEC.25-T05N-R67W	SLOT#30 BOOTH N #25-16 (05-123-21927) PA	BOOTH N #25-16 (05-123-21927) PA	BOOTH N #25-16 AWB	BOOTH N #25-16 AWP (PA)	Abandoned	8319.60	1736.83	8319.60	8309.64	0.20	8309.64	FAIL
SEC.25-T05N-R67W	SLOT#24 BOOTH N #25-19 (05-123-25620) SI	BOOTH N #25-19 (05-123-25620) SI	BOOTH N #25-19 AWB	BOOTH N #25-19 AWP (SI)	Producing / injecting	11697.78	1748.16	11697.78	11687.79	0.20	11687.79	FAIL
SEC.26-T05N-R67W	SLOT#02 BLEHM N #26-19 (05-123-23361) SI	BLEHM N #26-19	BLEHM N #26-19 AWB	BLEHM N #26-19 AWP	Producing / injecting	16722.08	1765.18	16722.08	16711.84	0.21	16711.84	FAIL
SEC.26-T05N-R67W	SLOT#16 BOOTH #34-26 (05-123-18230) PA	BOOTH #34-26	BOOTH #34-26 AWB	BOOTH #34-26 AWB	Abandoned	14795.89	1957.88	14795.89	14783.16	0.23	14783.16	FAIL



Closest Approach Clearance Summary Report

BOOTH STATE 07NA (REV-A.0) PWP - SPE WPTS Stop Drilling HSE Risk (2017)
Page 4 of 5



REFERENCE WELLPATH IDENTIFICATION			
Operator	PDC ENERGY INC	Well	BOOTH STATE 07NA
Field	WELD COUNTY (NAD83/GRID)	API/Legal	
Facility	SEC.25-T05N-R67W	Wellbore	BOOTH STATE 07NA PWB
Slot	SLOT#07 BOOTH STATE 07NA (2595'FSL & 752'FEL,SEC.25)		

CALCULATION RANGE & CUTOFF		
From: 30.00ft MD	To: 17967.06ft MD	C-C Cutoff: (none)

OFFSET WELL CLEARANCE SUMMARY (54 Offset Wellpaths selected) Ratios are calculated in Closest Approach plane												
Offset Facility	Offset Slot	Offset Well	Offset Wellbore	Offset Wellpath	Wellbore Status	C-C Clearance Distance			Rule Separation Ratio			
						Ref MD [ft]	Min C-C Clear Dist [ft]	Diverging from MD [ft]	Ref MD of Min Ratio [ft]	Min Ratio	Min Ratio Dvrg from [ft]	Rule Status
SEC.25-T05N-R67W	SLOT#22 BOOTH #25-12 (05-123-17336) PA	BOOTH #25-12 (05-123-17336) PA	BOOTH #25-12 AWB	BOOTH #25-12 AWP (PA)	Abandoned	9676.06	2071.25	9676.06	9662.11	0.23	9662.11	FAIL
SEC.26-T05N-R67W	SLOT#07 VETTER #26-12 (05-123-19413) PA	VETTER #26-12	VETTER #26-12 AWB	VETTER #26-12 AWP	Drilling	14616.80	2252.50	14616.80	14600.15	0.26	14600.15	FAIL
SEC.26-T05N-R67W	SLOT#08 BLEHM #3 (05-123-11103) TA	BLEHM #3	BLEHM #3 AWB	BLEHM #3 AWP	Drilling	17417.14	2242.53	17417.14	17400.57	0.26	17400.57	FAIL
SEC.25-T05N-R67W	SLOT#17 BOOTH #N 25-3 (05-123-15479) SI	BOOTH #N 25-3 (05-123-15479) SI	BOOTH #N 25-3 AWB	BOOTH #N 25-3 AWP (SI)	Producing / injecting	10960.41	2417.27	10960.41	10941.33	0.28	10941.33	FAIL
SEC.25-T05N-R67W	SLOT#23 BOOTH N #25-4 (05-123-15478) SI	BOOTH N #25-4 (05-123-15478) SI	BOOTH N #25-4 AWB	BOOTH N #25-4 AWP (SI)	Producing / injecting	12365.64	2426.95	12365.64	12346.38	0.28	12346.38	FAIL
SEC.26-T05N-R67W	SLOT#01 BLEHM N #26-03 (05-123-19438) SI	BLEHM N #26-03	BLEHM N #26-03 AWB	BLEHM N #26-03 AWP (SI)	Producing / injecting	16287.79	2433.63	16287.79	16268.28	0.28	16268.28	FAIL
SEC.25-T05N-R67W	SLOT#31 BOOTH #25-32 (05-123-19894) PA	BOOTH #25-32 (05-123-19894) PA	BOOTH #25-32 AWB	BOOTH #25-32 AWP (PA)	Abandoned	9366.11	1109.12	9366.11	9357.21	1.33	9357.21	PASS
SEC.25-T05N-R67W	SLOT#36 Booth N #25-22D (05-123-31646) PA	Booth N #25-22D (05-123-31646) PA	Booth N #25-22D AWB	Booth N #25-22D AWP (PA)	Abandoned	9022.05	111.08	9022.05	9000.06	1.38	9000.06	PASS
SEC.25-T05N-R67W	SLOT#06 BOOTH STATE 06N (2610'FSL & 752'FEL,SEC.25)	BOOTH STATE 06N	BOOTH STATE 06N PWB	BOOTH STATE 06N (REV-A.0) PWP	Planned	30.00	14.94	230.00	17966.65	1.57	17966.65	PASS
SEC.25-T05N-R67W	SLOT#08 BOOTH STATE 08C (2580'FSL & 753'FEL,SEC.25)	BOOTH STATE 08C	BOOTH STATE 08C PWB	BOOTH STATE 08C (REV-A.0) PWP	Planned	401.59	14.94	17930.00	490.29	1.60	17967.06	PASS
SEC.25-T05N-R67W	SLOT#35 Booth N #25-20D (05-123-31645) TA	Booth N #25-20D (05-123-31645) TA	Booth N #25-20D AWB	Booth N #25-20D AWP (TA)	Abandoned	11452.76	289.83	11452.76	11497.45	2.44	11497.45	PASS
SEC.25-T05N-R67W	SLOT#05 BOOTH STATE 05N (2625'FSL & 752'FEL,SEC.25)	BOOTH STATE 05N	BOOTH STATE 05N PWB	BOOTH STATE 05N (REV-A.0) PWP	Planned	30.00	29.87	330.00	17967.06	2.74	17967.06	PASS
SEC.25-T05N-R67W	SLOT#09 BOOTH STATE 09N (2565'FSL & 753'FEL,SEC.25)	BOOTH STATE 09N	BOOTH STATE 09N PWB	BOOTH STATE 09N (REV-A.0) PWP	Planned	401.32	30.24	401.32	17967.06	2.78	17967.06	PASS
SEC.25-T05N-R67W	SLOT#10 BOOTH STATE 10N (2550'FSL & 753'FEL,SEC.25)	BOOTH STATE 10N	BOOTH STATE 10N PWB	BOOTH STATE 10N (REV-A.0) PWP	Planned	402.52	45.18	402.52	17967.06	4.14	17967.06	PASS
SEC.25-T05N-R67W	SLOT#04 BOOTH STATE 04C (2640'FSL & 752'FEL,SEC.25)	BOOTH STATE 04C	BOOTH STATE 04C PWB	BOOTH STATE 04C (REV-A.0) PWP	Planned	30.00	44.81	17967.06	17967.06	4.21	17967.06	PASS
SEC.25-T05N-R67W	SLOT#38 Booth N #25-21D (05-123-31648) PA	Booth N #25-21D (05-123-31648) PA	Booth N #25-21D AWB	Booth N #25-21D AWP (PA)	Abandoned	10077.43	404.13	10077.43	10114.99	4.66	10114.99	PASS
SEC.25-T05N-R67W	SLOT#03 BOOTH STATE 03NA (2655'FSL & 752'FEL,SEC.25)	BOOTH STATE 03NA	BOOTH STATE 03NA PWB	BOOTH STATE 03NA (REV-A.0) PWP	Planned	30.00	60.11	330.00	17967.06	5.42	17967.06	PASS
SEC.25-T05N-R67W	SLOT#11 BOOTH STATE 11N (2535'FSL & 753'FEL,SEC.25)	BOOTH STATE 11N	BOOTH STATE 11N PWB	BOOTH STATE 11N (REV-A.0) PWP	Planned	30.00	60.11	230.00	17967.06	5.46	17967.06	PASS
SEC.25-T05N-R67W	SLOT#02 BOOTH STATE 02N (2670'FSL & 752'FEL,SEC.25)	BOOTH STATE 02N	BOOTH STATE 02N PWB	BOOTH STATE 02N (REV-A.0) PWP	Planned	30.00	75.05	400.00	17967.06	6.81	17967.06	PASS
SEC.25-T05N-R67W	SLOT#12 BOOTH STATE 12N (2520'FSL & 753'FEL,SEC.25)	BOOTH STATE 12N	BOOTH STATE 12N PWB	BOOTH STATE 12N (REV-A.0) PWP	Planned	30.00	75.05	230.00	17967.06	6.82	17967.06	PASS
SEC.25-T05N-R67W	SLOT#01 BOOTH STATE 01N (2588'FNL & 752'FEL,SEC.25)	BOOTH STATE 01N	BOOTH STATE 01N PWB	BOOTH STATE 01N (REV-A.0) PWP	Planned	30.00	89.99	230.00	17967.06	8.14	17967.06	PASS
SEC.26-T05N-R67W	SLOT#04 BOOTH N #25-33D (05-123-31666) PR	BOOTH N #25-33D	BOOTH N #25-33D AWB	BOOTH N #25-33D AWP	Drilling	12716.81	1168.67	12716.81	12819.21	8.52	12819.21	PASS
SEC.26-T05N-R67W	SLOT#13 BOOTH #24-26 (05-123-17942) PA	BOOTH #24-26	BOOTH #24-26 AWB	BOOTH #24-26 AWP	Abandoned	16366.26	1892.91	16366.26	16560.33	9.05	16560.33	PASS
SEC.25-T05N-R67W	SLOT#25 Booth N #25-31D (05-123-31514) SI	Booth N #25-31D (05-123-31514) SI	Booth N #25-31D AWB	Booth N #25-31D AWP (SI)	Producing / injecting	12956.20	1559.37	12956.20	13127.13	11.37	13127.13	PASS
SEC.25-T05N-R67W	SLOT#37 Booth N #25-24D (05-123-31647) PA	Booth N #25-24D (05-123-31647) PA	Booth N #25-24D AWB	Booth N #25-24D AWP (PA)	Abandoned	10280.99	1018.70	10280.99	10381.52	11.62	10381.52	PASS



Closest Approach Clearance Summary Report

BOOTH STATE 07NA (REV-A.0) PWP - SPE WPTS Stop Drilling HSE Risk (2017)
Page 5 of 5



REFERENCE WELLPATH IDENTIFICATION			
Operator	PDC ENERGY INC	Well	BOOTH STATE 07NA
Field	WELD COUNTY (NAD83/GRID)	API/Legal	
Facility	SEC.25-T05N-R67W	Wellbore	BOOTH STATE 07NA PWB
Slot	SLOT#07 BOOTH STATE 07NA (2595'FSL & 752'FEL,SEC.25)		

CALCULATION RANGE & CUTOFF		
From: 30.00ft MD	To: 17967.06ft MD	C-C Cutoff: (none)

OFFSET WELL CLEARANCE SUMMARY (54 Offset Wellpaths selected) Ratios are calculated in Closest Approach plane												
Offset Facility	Offset Slot	Offset Well	Offset Wellbore	Offset Wellpath	Wellbore Status	C-C Clearance Distance			Rule Separation Ratio			
						Ref MD [ft]	Min C-C Clear Dist [ft]	Diverging from MD [ft]	Ref MD of Min Ratio [ft]	Min Ratio	Min Ratio Dvrg from [ft]	Rule Status
SEC.26-T05N-R67W	SLOT#05 BLEHM N #26-1 (05-123-22113) PA Gyro Need Survey	BLEHM N #26-1	BLEHM N #26-1 AWB	BLEHM N #26-1 AWP	Abandoned	13404.65	2350.55	13404.65	13759.29	15.30	13759.29	PASS
SEC.25-T05N-R67W	SLOT#18 Booth N #25-18D (05-123-31511) PA	Booth N #25-18D (05-123-31511) PA	Booth N #25-18D AWB	Booth N #25-18D AWP (PA)	Abandoned	10345.93	1540.39	10345.93	10672.84	16.39	10672.84	PASS
SEC.25-T05N-R67W	SLOT#14 BOOTH N #25-14 (05-123-22709) PA	BOOTH N #25-14 (05-123-22709) PA	BOOTH N #25-14 AWB	BOOTH N #25-14 AWP (PA)	Abandoned	10777.81	1843.97	10777.81	11079.51	18.58	11079.51	PASS
SEC.25-T05N-R67W	SLOT#16 BOOTH #25-11 (05-123-16856) PA	BOOTH #25-11 (05-123-16856) PA	BOOTH #25-11 AWB	BOOTH #25-11 AWP (PA)	Abandoned	30.00	1940.12	8330.00	8955.40	33.02	8955.40	PASS