

# PDC ENERGY INC

Location: COLORADO Slot: SLOT#06 BOOTH STATE 06N (2610'FSL & 752'FEL,SEC.25)

Field: WELD COUNTY (NAD83/GRID) Well: BOOTH STATE 06N

Facility: SEC.25-T05N-R67W Wellbore: BOOTH STATE 06N PWB

Plot reference wellpath is BOOTH STATE 06N (REV-A.0) PWP

Grid System: NAD83 / Lambert Colorado SP, Northern Zone (501), US feet

True vertical depths are referenced to (4982'GL+30'KB@5012'RKB) (RKB)

North Reference: Grid north

Reference wellpath measured depths are referenced to (4982'GL+30'KB@5012'RKB) (RKB)

Scale: True distance

(4982'GL+30'KB@5012'RKB) (RKB) to Mean Sea Level: 5012 feet

Coordinates are in feet referenced to Slot

Mean Sea Level to Ground level (At Slot: SLOT#06 BOOTH STATE 06N (2610'FSL & 752'FEL,SEC.25)): 0 feet

Depths are in feet

Offset wellpath MDs are referenced to each path's default MD datum

Created by: guemater on 2024-05-26; Database: WA\_Denver

## Location Information

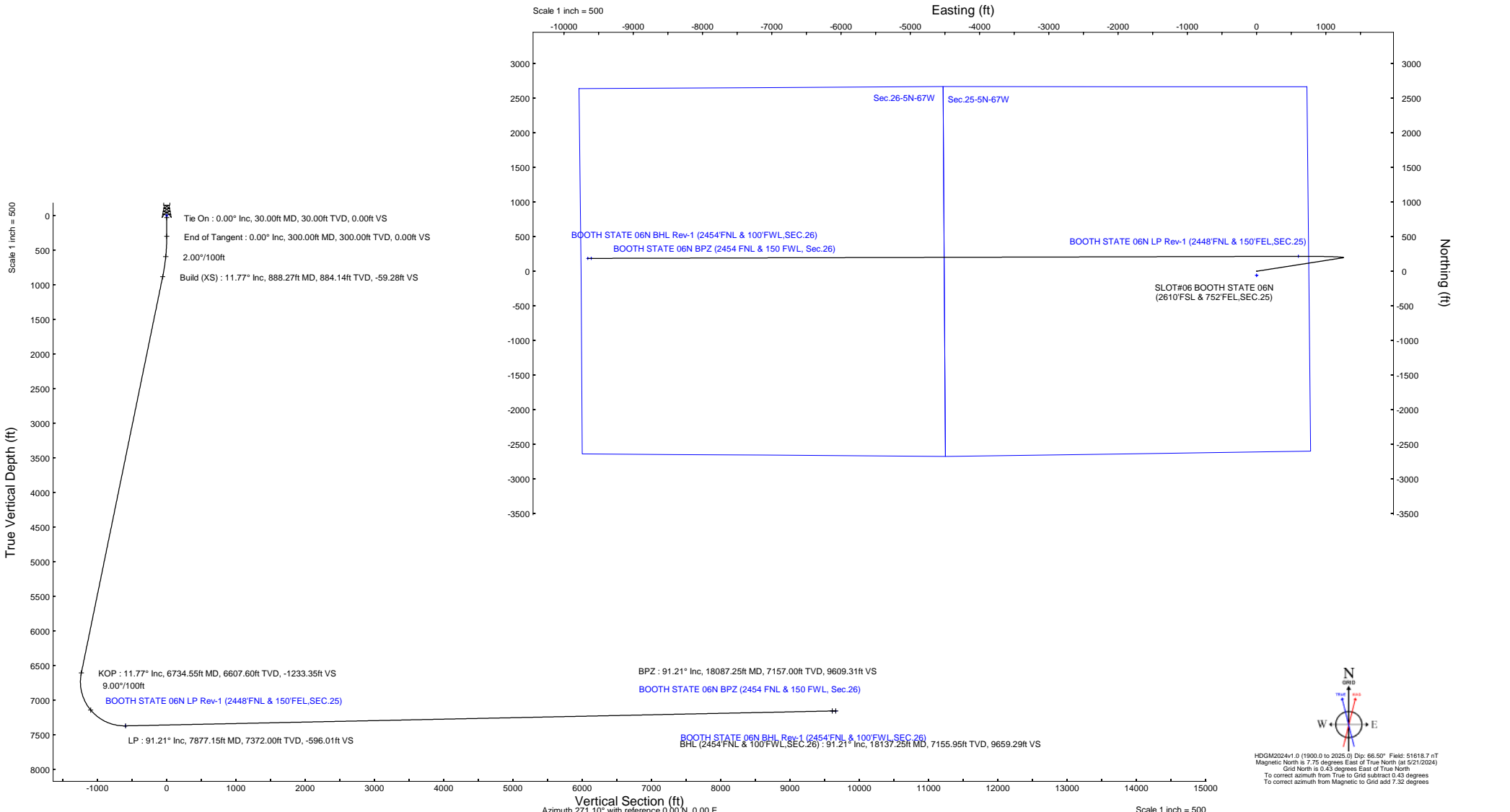
Facility Name		Grid East (US ft)	Grid North (US ft)	Latitude	Longitude	
SEC.25-T05N-R67W		3185351.829	1378575.217	40°22'14.4552"N	104°50'5.1720"W	
Slot	Local N (ft)	Local E (ft)	Grid East (US ft)	Grid North (US ft)	Latitude	Longitude
SLOT#06 BOOTH STATE 06N (2610'FSL & 752'FEL,SEC.25)	-75.05	0.01	3185351.835	1378580.170	40°22'13.7136"N	104°50'5.1792"W
(4982'GL+30'KB@5012'RKB) (RKB) to Ground level (At Slot: SLOT#06 BOOTH STATE 06N (2610'FSL & 752'FEL,SEC.25))				5012ft		
Mean Sea Level to Ground level (At Slot: SLOT#06 BOOTH STATE 06N (2610'FSL & 752'FEL,SEC.25))				0ft		
(4982'GL+30'KB@5012'RKB) (RKB) to Mean Sea Level				5012ft		

### Targets

Name	MD (ft)	TVD (ft)	Local N (ft)	Local E (ft)	Grid East (US ft)	Grid North (US ft)	Latitude	Longitude
Sec.25-5N-67W	N/A	2.00	-60.11	0.17	3185352.01	1378440.06	40°22'13.1196"N	104°50'5.1828"W
Sec.26-5N-67W	N/A	2.00	-60.11	0.17	3185352.01	1378440.06	40°22'13.1196"N	104°50'5.1828"W
BOOTH STATE 06N BHL Rev-1 (2454'FNL & 100'FWL,SEC.26)	N/A	7157.00	185.19	-9657.68	3175694.57	1378685.35	40°22'16.2408"N	104°52'9.9330"W
BOOTH STATE 06N BPZ (2454'FNL & 150'FWL, Sec.26)	18087.25	7157.00	185.54	-9607.52	3175744.72	1378685.71	40°22'16.2408"N	104°52'9.2856"W
BOOTH STATE 06N LP Rev-1 (2448'FNL & 150'FEL,SEC.25)	7877.15	7372.00	215.82	600.26	3185952.07	1378715.98	40°22'15.8016"N	104°49'57.4032"W

### Well Profile Data

Design Comment	MD (ft)	Inc (°)	Az (°)	TVD (ft)	Local N (ft)	Local E (ft)	DLS (°/100ft)	VS (ft)
Tie On	30.00	0.00	81.130	30.00	0.00	0.00	0.00	0.00
End of Tangent	300.00	0.00	81.130	300.00	0.00	0.00	0.00	0.00
Build (XS)	888.27	11.765	81.130	884.14	9.28	59.47	2.00	-59.28
KOP	6734.55	11.765	81.130	6607.60	193.09	1237.29	0.00	-1233.35
LP	7877.15	91.207	269.830	7372.00	215.82	600.26	9.00	-596.01
BPZ	18087.25	91.207	269.830	7157.00	185.54	-9607.52	0.00	9609.31
BHL (2454'FNL & 100'FWL,SEC.26)	18137.25	91.207	269.830	7155.95	185.40	-9657.51	0.00	9659.29



HDGM2024v1.0 (1900.0 to 2025.0) Dip: 66.50° Field: 51618.7 nT  
 Magnetic North is 7.75 degrees East of True North (at 5/21/2024)  
 Grid North is 0.43 degrees East of True North  
 To correct azimuth from True to Grid subtract 0.43 degrees  
 To correct azimuth from Magnetic to Grid add 7.32 degrees



# Planned Wellpath Report

BOOTH STATE 06N (REV-A.0) PWP  
Page 1 of 8



## REFERENCE WELLPATH IDENTIFICATION

Operator	PDC ENERGY INC	Well	BOOTH STATE 06N
Field	WELD COUNTY (NAD83/GRID)	API/Legal	
Facility	SEC.25-T05N-R67W	Wellbore	BOOTH STATE 06N PWB
Slot	SLOT#06 BOOTH STATE 06N (2610'FSL & 752'FEL,SEC.25)		

## REPORT SETUP INFORMATION

Projection System	NAD83 / Lambert Colorado SP, Northern Zone (501), US feet	Software System	WellArchitect® 6.0
North Reference	Grid	User	Guenaler
Scale	0.999959	Report Generated	5/25/2024 at 9:21:41 PM
Convergence at slot	0.43° East	Database	WA_Denver

## WELLPATH LOCATION

	Local coordinates		Grid coordinates		Geographic coordinates	
	North[ft]	East[ft]	Easting[US ft]	Northing[US ft]	Latitude	Longitude
Slot Location	-75.05	0.01	3185351.84	1378500.17	40.3704760°	-104.8347720°
Facility Reference Pt			3185351.83	1378575.22	40.3706820°	-104.8347700°
Field Reference Pt			3296400.32	1413291.61	40.4630000°	-104.4347500°

## WELLPATH DATUM

Calculation method	Minimum curvature	(4982'GL+30'KB@5012'RKB) (RKB) to Facility Vertical Datum	5012.00ft
Horizontal Reference Pt	Slot	(4982'GL+30'KB@5012'RKB) (RKB) to Mean Sea Level	5012.00ft
Vertical Reference Pt	(4982'GL+30'KB@5012'RKB) (RKB)	(4982'GL+30'KB@5012'RKB) (RKB) to Ground Level at Slot (SLOT#06 BOOTH STATE 06N (2610'FSL & 752'FEL,SEC.25))	5012.00ft
MD Reference Pt	(4982'GL+30'KB@5012'RKB) (RKB)	Section Origin	N 0.00, E 0.00 ft
Field Vertical Reference	Mean Sea Level	Section Azimuth	271.10°



# Planned Wellpath Report

BOOTH STATE 06N (REV-A.0) PWP  
Page 2 of 8


**REFERENCE WELLPATH IDENTIFICATION**

Operator	PDC ENERGY INC	Well	BOOTH STATE 06N
Field	WELD COUNTY (NAD83/GRID)	API/Legal	
Facility	SEC.25-T05N-R67W	Wellbore	BOOTH STATE 06N PWB
Slot	SLOT#06 BOOTH STATE 06N (2610'FSL & 752'FEL,SEC.25)		

**WELLPATH DATA (201 stations) † = interpolated, ‡ = extrapolated station**

MD [ft]	Inclination [°]	Azimuth [°]	TVD [ft]	Vert Sect [ft]	North [ft]	East [ft]	Latitude	Longitude	DLS [°/100ft]	Comments
0.00†	0.000	81.130	0.00	0.00	0.00	0.00	40.3704760	-104.8347720	0.00	
30.00	0.000	81.130	30.00	0.00	0.00	0.00	40.3704760	-104.8347720	0.00	Tie On
130.00†	0.000	81.130	130.00	0.00	0.00	0.00	40.3704760	-104.8347720	0.00	
230.00†	0.000	81.130	230.00	0.00	0.00	0.00	40.3704760	-104.8347720	0.00	
300.00	0.000	81.130	300.00	0.00	0.00	0.00	40.3704760	-104.8347720	0.00	End of Tangent
330.00†	0.600	81.130	330.00	-0.15	0.02	0.16	40.3704761	-104.8347714	2.00	
430.00†	2.600	81.130	429.96	-2.90	0.45	2.91	40.3704772	-104.8347615	2.00	
530.00†	4.600	81.130	529.75	-9.09	1.42	9.12	40.3704797	-104.8347392	2.00	
630.00†	6.600	81.130	629.27	-18.70	2.93	18.76	40.3704836	-104.8347046	2.00	
730.00†	8.600	81.130	728.39	-31.72	4.97	31.83	40.3704890	-104.8346577	2.00	
830.00†	10.600	81.130	826.98	-48.15	7.54	48.30	40.3704957	-104.8345985	2.00	
888.27	11.765	81.130	884.14	-59.28	9.28	59.47	40.3705002	-104.8345583	2.00	Build (XS)
904.47†	11.765	81.130	900.00	-62.53	9.79	62.73	40.3705016	-104.8345466	0.00	PIERRE
930.00†	11.765	81.130	925.00	-67.66	10.59	67.87	40.3705037	-104.8345281	0.00	
1027.04†	11.765	81.130	1020.00	-87.15	13.64	87.42	40.3705116	-104.8344579	0.00	U PAWNEE
1030.00†	11.765	81.130	1022.90	-87.74	13.74	88.02	40.3705119	-104.8344557	0.00	
1130.00†	11.765	81.130	1120.80	-107.82	16.88	108.17	40.3705201	-104.8343834	0.00	
1230.00†	11.765	81.130	1218.70	-127.91	20.02	128.31	40.3705283	-104.8343110	0.00	
1330.00†	11.765	81.130	1316.59	-147.99	23.17	148.46	40.3705365	-104.8342386	0.00	
1430.00†	11.765	81.130	1414.49	-168.07	26.31	168.61	40.3705448	-104.8341662	0.00	
1522.45†	11.765	81.130	1505.00	-186.64	29.22	187.23	40.3705523	-104.8340993	0.00	U PAWNEE BASE
1530.00†	11.765	81.130	1512.39	-188.15	29.46	188.75	40.3705530	-104.8340938	0.00	
1630.00†	11.765	81.130	1610.29	-208.24	32.60	208.90	40.3705612	-104.8340214	0.00	
1730.00†	11.765	81.130	1708.19	-228.32	35.75	229.05	40.3705694	-104.8339491	0.00	
1830.00†	11.765	81.130	1806.09	-248.40	38.89	249.19	40.3705776	-104.8338767	0.00	
1930.00†	11.765	81.130	1903.99	-268.48	42.03	269.34	40.3705858	-104.8338043	0.00	
2030.00†	11.765	81.130	2001.89	-288.57	45.18	289.49	40.3705940	-104.8337319	0.00	
2130.00†	11.765	81.130	2099.79	-308.65	48.32	309.63	40.3706023	-104.8336595	0.00	
2230.00†	11.765	81.130	2197.69	-328.73	51.47	329.78	40.3706105	-104.8335871	0.00	
2330.00†	11.765	81.130	2295.59	-348.81	54.61	349.92	40.3706187	-104.8335147	0.00	
2430.00†	11.765	81.130	2393.48	-368.89	57.75	370.07	40.3706269	-104.8334424	0.00	
2530.00†	11.765	81.130	2491.38	-388.98	60.90	390.22	40.3706351	-104.8333700	0.00	
2630.00†	11.765	81.130	2589.28	-409.06	64.04	410.36	40.3706433	-104.8332976	0.00	
2730.00†	11.765	81.130	2687.18	-429.14	67.19	430.51	40.3706515	-104.8332252	0.00	
2830.00†	11.765	81.130	2785.08	-449.22	70.33	450.66	40.3706598	-104.8331528	0.00	
2930.00†	11.765	81.130	2882.98	-469.31	73.47	470.80	40.3706680	-104.8330804	0.00	
3030.00†	11.765	81.130	2980.88	-489.39	76.62	490.95	40.3706762	-104.8330081	0.00	
3130.00†	11.765	81.130	3078.78	-509.47	79.76	511.10	40.3706844	-104.8329357	0.00	
3230.00†	11.765	81.130	3176.68	-529.55	82.91	531.24	40.3706926	-104.8328633	0.00	
3330.00†	11.765	81.130	3274.58	-549.64	86.05	551.39	40.3707008	-104.8327909	0.00	
3430.00†	11.765	81.130	3372.48	-569.72	89.20	571.54	40.3707090	-104.8327185	0.00	
3530.00†	11.765	81.130	3470.37	-589.80	92.34	591.68	40.3707173	-104.8326461	0.00	
3630.00†	11.765	81.130	3568.27	-609.88	95.48	611.83	40.3707255	-104.8325737	0.00	
3730.00†	11.765	81.130	3666.17	-629.97	98.63	631.98	40.3707337	-104.8325014	0.00	
3830.00†	11.765	81.130	3764.07	-650.05	101.77	652.12	40.3707419	-104.8324290	0.00	



# Planned Wellpath Report

BOOTH STATE 06N (REV-A.0) PWP  
Page 3 of 8



REFERENCE WELLPATH IDENTIFICATION			
Operator	PDC ENERGY INC	Well	BOOTH STATE 06N
Field	WELD COUNTY (NAD83/GRID)	API/Legal	
Facility	SEC.25-T05N-R67W	Wellbore	BOOTH STATE 06N PWB
Slot	SLOT#06 BOOTH STATE 06N (2610'FSL & 752'FEL,SEC.25)		

WELLPATH DATA (201 stations) † = interpolated, ‡ = extrapolated station										
MD [ft]	Inclination [°]	Azimuth [°]	TVD [ft]	Vert Sect [ft]	North [ft]	East [ft]	Latitude	Longitude	DLS [°/100ft]	Comments
3897.34†	11.765	81.130	3830.00	-663.57	103.89	665.69	40.3707474	-104.8323802	0.00	Parkman Sandstone
3930.00†	11.765	81.130	3861.97	-670.13	104.92	672.27	40.3707501	-104.8323566	0.00	
4030.00†	11.765	81.130	3959.87	-690.21	108.06	692.41	40.3707583	-104.8322842	0.00	
4130.00†	11.765	81.130	4057.77	-710.30	111.20	712.56	40.3707665	-104.8322118	0.00	
4230.00†	11.765	81.130	4155.67	-730.38	114.35	732.71	40.3707747	-104.8321394	0.00	
4330.00†	11.765	81.130	4253.57	-750.46	117.49	752.85	40.3707830	-104.8320670	0.00	
4425.44†	11.765	81.130	4347.00	-769.63	120.49	772.08	40.3707908	-104.8319980	0.00	Sussex Sandstone
4430.00†	11.765	81.130	4351.47	-770.54	120.64	773.00	40.3707912	-104.8319947	0.00	
4530.00†	11.765	81.130	4449.37	-790.63	123.78	793.15	40.3707994	-104.8319223	0.00	
4630.00†	11.765	81.130	4547.26	-810.71	126.92	813.29	40.3708076	-104.8318499	0.00	
4730.00†	11.765	81.130	4645.16	-830.79	130.07	833.44	40.3708158	-104.8317775	0.00	
4830.00†	11.765	81.130	4743.06	-850.87	133.21	853.59	40.3708240	-104.8317051	0.00	
4930.00†	11.765	81.130	4840.96	-870.95	136.36	873.73	40.3708322	-104.8316327	0.00	
5008.69†	11.765	81.130	4918.00	-886.76	138.83	889.59	40.3708387	-104.8315758	0.00	Shannon Sandstone
5030.00†	11.765	81.130	4938.86	-891.04	139.50	893.88	40.3708405	-104.8315604	0.00	
5130.00†	11.765	81.130	5036.76	-911.12	142.64	914.03	40.3708487	-104.8314880	0.00	
5230.00†	11.765	81.130	5134.66	-931.20	145.79	934.17	40.3708569	-104.8314156	0.00	
5330.00†	11.765	81.130	5232.56	-951.28	148.93	954.32	40.3708651	-104.8313432	0.00	
5430.00†	11.765	81.130	5330.46	-971.37	152.08	974.47	40.3708733	-104.8312708	0.00	
5530.00†	11.765	81.130	5428.36	-991.45	155.22	994.61	40.3708815	-104.8311984	0.00	
5630.00†	11.765	81.130	5526.26	-1011.53	158.37	1014.76	40.3708897	-104.8311260	0.00	
5730.00†	11.765	81.130	5624.15	-1031.61	161.51	1034.90	40.3708979	-104.8310537	0.00	
5830.00†	11.765	81.130	5722.05	-1051.70	164.65	1055.05	40.3709062	-104.8309813	0.00	
5930.00†	11.765	81.130	5819.95	-1071.78	167.80	1075.20	40.3709144	-104.8309089	0.00	
6030.00†	11.765	81.130	5917.85	-1091.86	170.94	1095.34	40.3709226	-104.8308365	0.00	
6130.00†	11.765	81.130	6015.75	-1111.94	174.09	1115.49	40.3709308	-104.8307641	0.00	
6230.00†	11.765	81.130	6113.65	-1132.03	177.23	1135.64	40.3709390	-104.8306917	0.00	
6330.00†	11.765	81.130	6211.55	-1152.11	180.37	1155.78	40.3709472	-104.8306193	0.00	
6430.00†	11.765	81.130	6309.45	-1172.19	183.52	1175.93	40.3709554	-104.8305470	0.00	
6530.00†	11.765	81.130	6407.35	-1192.27	186.66	1196.08	40.3709636	-104.8304746	0.00	
6630.00†	11.765	81.130	6505.25	-1212.36	189.81	1216.22	40.3709719	-104.8304022	0.00	
6730.00†	11.765	81.130	6603.15	-1232.44	192.95	1236.37	40.3709801	-104.8303298	0.00	
6734.55	11.765	81.130	6607.60	-1233.35	193.09	1237.29	40.3709804	-104.8303265	0.00	KOP
6830.00†	3.536	59.065	6702.13	-1245.45	196.11	1249.45	40.3709885	-104.8302828	9.00	
6930.00†	6.232	286.713	6801.95	-1242.84	199.27	1246.89	40.3709972	-104.8302919	9.00	
7030.00†	15.070	276.617	6900.14	-1224.63	202.33	1228.74	40.3710060	-104.8303569	9.00	
7130.00†	24.028	273.938	6994.28	-1191.29	205.23	1195.45	40.3710146	-104.8304763	9.00	
7230.00†	33.008	272.660	7082.05	-1143.63	207.90	1147.83	40.3710229	-104.8306471	9.00	
7265.16†	36.168	272.349	7111.00	-1123.68	208.77	1127.89	40.3710257	-104.8307187	9.00	Sharon Springs
7308.38†	40.052	272.025	7145.00	-1097.01	209.79	1101.24	40.3710291	-104.8308143	9.00	Niobrara A
7330.00†	41.995	271.883	7161.31	-1082.83	210.27	1087.06	40.3710307	-104.8308652	9.00	
7430.00†	50.987	271.337	7230.08	-1010.38	212.28	1014.64	40.3710377	-104.8311250	9.00	
7492.53†	56.610	271.063	7267.00	-959.94	213.33	964.21	40.3710417	-104.8313059	9.00	Niobrara B
7530.00†	59.980	270.916	7286.69	-928.06	213.88	932.34	40.3710438	-104.8314203	9.00	
7630.00†	68.975	270.565	7329.73	-837.92	215.04	842.20	40.3710489	-104.8317438	9.00	



# Planned Wellpath Report

BOOTH STATE 06N (REV-A.0) PWP  
Page 4 of 8



REFERENCE WELLPATH IDENTIFICATION			
Operator	PDC ENERGY INC	Well	BOOTH STATE 06N
Field	WELD COUNTY (NAD83/GRID)	API/Legal	
Facility	SEC.25-T05N-R67W	Wellbore	BOOTH STATE 06N PWB
Slot	SLOT#06 BOOTH STATE 06N (2610'FSL & 752'FEL,SEC.25)		

WELLPATH DATA (201 stations) † = interpolated, ‡ = extrapolated station										
MD [ft]	Inclination [°]	Azimuth [°]	TVD [ft]	Vert Sect [ft]	North [ft]	East [ft]	Latitude	Longitude	DLS [°/100ft]	Comments
7633.56†	69.294	270.554	7331.00	-834.59	215.07	838.88	40.3710490	-104.8317557	9.00	Niobrara C
7730.00†	77.970	270.255	7358.15	-742.16	215.71	746.43	40.3710527	-104.8320874	9.00	
7830.00†	86.965	269.964	7371.25	-643.14	215.90	647.40	40.3710553	-104.8324428	9.00	
7877.15	91.207	269.830	7372.00†	-596.01	215.82	600.26	40.3710560	-104.8326120	9.00	LP
7930.00†	91.207	269.830	7370.89	-543.19	215.66	547.43	40.3710567	-104.8328016	0.00	
8030.00†	91.207	269.830	7368.78	-443.23	215.36	447.45	40.3710579	-104.8331604	0.00	
8130.00†	91.207	269.830	7366.68	-343.28	215.07	347.47	40.3710592	-104.8335192	0.00	
8230.00†	91.207	269.830	7364.57	-243.33	214.77	247.49	40.3710604	-104.8338780	0.00	
8330.00†	91.207	269.830	7362.46	-143.37	214.47	147.52	40.3710617	-104.8342368	0.00	
8430.00†	91.207	269.830	7360.36	-43.42	214.18	47.54	40.3710629	-104.8345956	0.00	
8530.00†	91.207	269.830	7358.25	56.53	213.88	-52.44	40.3710641	-104.8349544	0.00	
8630.00†	91.207	269.830	7356.15	156.49	213.58	-152.41	40.3710654	-104.8353132	0.00	
8730.00†	91.207	269.830	7354.04	256.44	213.29	-252.39	40.3710666	-104.8356720	0.00	
8830.00†	91.207	269.830	7351.94	356.39	212.99	-352.37	40.3710679	-104.8360308	0.00	
8930.00†	91.207	269.830	7349.83	456.35	212.69	-452.35	40.3710691	-104.8363896	0.00	
9030.00†	91.207	269.830	7347.72	556.30	212.40	-552.32	40.3710704	-104.8367484	0.00	
9130.00†	91.207	269.830	7345.62	656.25	212.10	-652.30	40.3710716	-104.8371072	0.00	
9230.00†	91.207	269.830	7343.51	756.21	211.81	-752.28	40.3710728	-104.8374660	0.00	
9330.00†	91.207	269.830	7341.41	856.16	211.51	-852.26	40.3710741	-104.8378248	0.00	
9430.00†	91.207	269.830	7339.30	956.11	211.21	-952.23	40.3710753	-104.8381836	0.00	
9530.00†	91.207	269.830	7337.20	1056.07	210.92	-1052.21	40.3710765	-104.8385424	0.00	
9630.00†	91.207	269.830	7335.09	1156.02	210.62	-1152.19	40.3710778	-104.8389012	0.00	
9730.00†	91.207	269.830	7332.98	1255.97	210.32	-1252.17	40.3710790	-104.8392600	0.00	
9824.19†	91.207	269.830	7331.00	1350.12	210.04	-1346.34	40.3710802	-104.8395980	0.00	Niobrara C
9830.00†	91.207	269.830	7330.88	1355.93	210.03	-1352.14	40.3710802	-104.8396188	0.00	
9930.00†	91.207	269.830	7328.77	1455.88	209.73	-1452.12	40.3710815	-104.8399776	0.00	
10030.00†	91.207	269.830	7326.67	1555.83	209.43	-1552.10	40.3710827	-104.8403364	0.00	
10130.00†	91.207	269.830	7324.56	1655.79	209.14	-1652.08	40.3710839	-104.8406952	0.00	
10230.00†	91.207	269.830	7322.45	1755.74	208.84	-1752.05	40.3710851	-104.8410540	0.00	
10330.00†	91.207	269.830	7320.35	1855.69	208.54	-1852.03	40.3710864	-104.8414128	0.00	
10430.00†	91.207	269.830	7318.24	1955.65	208.25	-1952.01	40.3710876	-104.8417717	0.00	
10530.00†	91.207	269.830	7316.14	2055.60	207.95	-2051.99	40.3710888	-104.8421305	0.00	
10630.00†	91.207	269.830	7314.03	2155.55	207.65	-2151.96	40.3710900	-104.8424893	0.00	
10730.00†	91.207	269.830	7311.93	2255.50	207.36	-2251.94	40.3710913	-104.8428481	0.00	
10830.00†	91.207	269.830	7309.82	2355.46	207.06	-2351.92	40.3710925	-104.8432069	0.00	
10930.00†	91.207	269.830	7307.71	2455.41	206.77	-2451.89	40.3710937	-104.8435657	0.00	
11030.00†	91.207	269.830	7305.61	2555.36	206.47	-2551.87	40.3710949	-104.8439245	0.00	
11130.00†	91.207	269.830	7303.50	2655.32	206.17	-2651.85	40.3710961	-104.8442833	0.00	
11230.00†	91.207	269.830	7301.40	2755.27	205.88	-2751.83	40.3710973	-104.8446421	0.00	
11330.00†	91.207	269.830	7299.29	2855.22	205.58	-2851.80	40.3710986	-104.8450009	0.00	
11430.00†	91.207	269.830	7297.19	2955.18	205.28	-2951.78	40.3710998	-104.8453597	0.00	
11530.00†	91.207	269.830	7295.08	3055.13	204.99	-3051.76	40.3711010	-104.8457185	0.00	
11630.00†	91.207	269.830	7292.97	3155.08	204.69	-3151.74	40.3711022	-104.8460773	0.00	
11730.00†	91.207	269.830	7290.87	3255.04	204.39	-3251.71	40.3711034	-104.8464361	0.00	
11830.00†	91.207	269.830	7288.76	3354.99	204.10	-3351.69	40.3711046	-104.8467949	0.00	



# Planned Wellpath Report

BOOTH STATE 06N (REV-A.0) PWP  
Page 5 of 8


**REFERENCE WELLPATH IDENTIFICATION**

Operator	PDC ENERGY INC	Well	BOOTH STATE 06N
Field	WELD COUNTY (NAD83/GRID)	API/Legal	
Facility	SEC.25-T05N-R67W	Wellbore	BOOTH STATE 06N PWB
Slot	SLOT#06 BOOTH STATE 06N (2610'FSL & 752'FEL,SEC.25)		

**WELLPATH DATA (201 stations) † = interpolated, ‡ = extrapolated station**

MD [ft]	Inclination [°]	Azimuth [°]	TVD [ft]	Vert Sect [ft]	North [ft]	East [ft]	Latitude	Longitude	DLS [°/100ft]	Comments
11930.00†	91.207	269.830	7286.66	3454.94	203.80	-3451.67	40.3711058	-104.8471537	0.00	
12030.00†	91.207	269.830	7284.55	3554.90	203.50	-3551.65	40.3711070	-104.8475125	0.00	
12130.00†	91.207	269.830	7282.45	3654.85	203.21	-3651.62	40.3711082	-104.8478713	0.00	
12230.00†	91.207	269.830	7280.34	3754.80	202.91	-3751.60	40.3711094	-104.8482301	0.00	
12330.00†	91.207	269.830	7278.23	3854.76	202.61	-3851.58	40.3711106	-104.8485889	0.00	
12430.00†	91.207	269.830	7276.13	3954.71	202.32	-3951.56	40.3711118	-104.8489477	0.00	
12530.00†	91.207	269.830	7274.02	4054.66	202.02	-4051.53	40.3711130	-104.8493065	0.00	
12630.00†	91.207	269.830	7271.92	4154.62	201.72	-4151.51	40.3711142	-104.8496653	0.00	
12730.00†	91.207	269.830	7269.81	4254.57	201.43	-4251.49	40.3711154	-104.8500241	0.00	
12830.00†	91.207	269.830	7267.70	4354.52	201.13	-4351.46	40.3711166	-104.8503829	0.00	
12863.48†	91.207	269.830	7267.00	4387.99	201.03	-4384.93	40.3711170	-104.8505030	0.00	Niobrara B
12930.00†	91.207	269.830	7265.60	4454.48	200.84	-4451.44	40.3711178	-104.8507417	0.00	
13030.00†	91.207	269.830	7263.49	4554.43	200.54	-4551.42	40.3711190	-104.8511005	0.00	
13130.00†	91.207	269.830	7261.39	4654.38	200.24	-4651.40	40.3711202	-104.8514593	0.00	
13230.00†	91.207	269.830	7259.28	4754.34	199.95	-4751.37	40.3711214	-104.8518181	0.00	
13330.00†	91.207	269.830	7257.18	4854.29	199.65	-4851.35	40.3711226	-104.8521769	0.00	
13430.00†	91.207	269.830	7255.07	4954.24	199.35	-4951.33	40.3711238	-104.8525357	0.00	
13530.00†	91.207	269.830	7252.96	5054.20	199.06	-5051.31	40.3711250	-104.8528945	0.00	
13630.00†	91.207	269.830	7250.86	5154.15	198.76	-5151.28	40.3711262	-104.8532533	0.00	
13730.00†	91.207	269.830	7248.75	5254.10	198.46	-5251.26	40.3711274	-104.8536121	0.00	
13830.00†	91.207	269.830	7246.65	5354.06	198.17	-5351.24	40.3711285	-104.8539709	0.00	
13930.00†	91.207	269.830	7244.54	5454.01	197.87	-5451.22	40.3711297	-104.8543297	0.00	
14030.00†	91.207	269.830	7242.44	5553.96	197.57	-5551.19	40.3711309	-104.8546885	0.00	
14130.00†	91.207	269.830	7240.33	5653.92	197.28	-5651.17	40.3711321	-104.8550473	0.00	
14230.00†	91.207	269.830	7238.22	5753.87	196.98	-5751.15	40.3711333	-104.8554061	0.00	
14330.00†	91.207	269.830	7236.12	5853.82	196.68	-5851.13	40.3711345	-104.8557649	0.00	
14430.00†	91.207	269.830	7234.01	5953.78	196.39	-5951.10	40.3711356	-104.8561237	0.00	
14530.00†	91.207	269.830	7231.91	6053.73	196.09	-6051.08	40.3711368	-104.8564825	0.00	
14630.00†	91.207	269.830	7229.80	6153.68	195.79	-6151.06	40.3711380	-104.8568413	0.00	
14730.00†	91.207	269.830	7227.70	6253.64	195.50	-6251.04	40.3711392	-104.8572001	0.00	
14830.00†	91.207	269.830	7225.59	6353.59	195.20	-6351.01	40.3711403	-104.8575589	0.00	
14930.00†	91.207	269.830	7223.48	6453.54	194.91	-6450.99	40.3711415	-104.8579177	0.00	
15030.00†	91.207	269.830	7221.38	6553.50	194.61	-6550.97	40.3711427	-104.8582765	0.00	
15130.00†	91.207	269.830	7219.27	6653.45	194.31	-6650.94	40.3711439	-104.8586353	0.00	
15230.00†	91.207	269.830	7217.17	6753.40	194.02	-6750.92	40.3711450	-104.8589941	0.00	
15330.00†	91.207	269.830	7215.06	6853.36	193.72	-6850.90	40.3711462	-104.8593529	0.00	
15430.00†	91.207	269.830	7212.96	6953.31	193.42	-6950.88	40.3711474	-104.8597117	0.00	
15530.00†	91.207	269.830	7210.85	7053.26	193.13	-7050.85	40.3711485	-104.8600705	0.00	
15630.00†	91.207	269.830	7208.74	7153.22	192.83	-7150.83	40.3711497	-104.8604293	0.00	
15730.00†	91.207	269.830	7206.64	7253.17	192.53	-7250.81	40.3711509	-104.8607881	0.00	
15830.00†	91.207	269.830	7204.53	7353.12	192.24	-7350.79	40.3711520	-104.8611469	0.00	
15930.00†	91.207	269.830	7202.43	7453.08	191.94	-7450.76	40.3711532	-104.8615057	0.00	
16030.00†	91.207	269.830	7200.32	7553.03	191.64	-7550.74	40.3711543	-104.8618646	0.00	
16130.00†	91.207	269.830	7198.21	7652.98	191.35	-7650.72	40.3711555	-104.8622234	0.00	
16230.00†	91.207	269.830	7196.11	7752.94	191.05	-7750.70	40.3711567	-104.8625822	0.00	



# Planned Wellpath Report

BOOTH STATE 06N (REV-A.0) PWP  
Page 6 of 8



REFERENCE WELLPATH IDENTIFICATION			
Operator	PDC ENERGY INC	Well	BOOTH STATE 06N
Field	WELD COUNTY (NAD83/GRID)	API/Legal	
Facility	SEC.25-T05N-R67W	Wellbore	BOOTH STATE 06N PWB
Slot	SLOT#06 BOOTH STATE 06N (2610'FSL & 752'FEL,SEC.25)		

WELLPATH DATA (201 stations) † = interpolated, ‡ = extrapolated station										
MD [ft]	Inclination [°]	Azimuth [°]	TVD [ft]	Vert Sect [ft]	North [ft]	East [ft]	Latitude	Longitude	DLS [°/100ft]	Comments
16330.00†	91.207	269.830	7194.00	7852.89	190.75	-7850.67	40.3711578	-104.8629410	0.00	
16430.00†	91.207	269.830	7191.90	7952.84	190.46	-7950.65	40.3711590	-104.8632998	0.00	
16530.00†	91.207	269.830	7189.79	8052.80	190.16	-8050.63	40.3711601	-104.8636586	0.00	
16630.00†	91.207	269.830	7187.69	8152.75	189.87	-8150.61	40.3711613	-104.8640174	0.00	
16730.00†	91.207	269.830	7185.58	8252.70	189.57	-8250.58	40.3711624	-104.8643762	0.00	
16830.00†	91.207	269.830	7183.47	8352.65	189.27	-8350.56	40.3711636	-104.8647350	0.00	
16930.00†	91.207	269.830	7181.37	8452.61	188.98	-8450.54	40.3711648	-104.8650938	0.00	
17030.00†	91.207	269.830	7179.26	8552.56	188.68	-8550.52	40.3711659	-104.8654526	0.00	
17130.00†	91.207	269.830	7177.16	8652.51	188.38	-8650.49	40.3711671	-104.8658114	0.00	
17230.00†	91.207	269.830	7175.05	8752.47	188.09	-8750.47	40.3711682	-104.8661702	0.00	
17330.00†	91.207	269.830	7172.95	8852.42	187.79	-8850.45	40.3711693	-104.8665290	0.00	
17430.00†	91.207	269.830	7170.84	8952.37	187.49	-8950.42	40.3711705	-104.8668878	0.00	
17530.00†	91.207	269.830	7168.73	9052.33	187.20	-9050.40	40.3711716	-104.8672466	0.00	
17630.00†	91.207	269.830	7166.63	9152.28	186.90	-9150.38	40.3711728	-104.8676054	0.00	
17730.00†	91.207	269.830	7164.52	9252.23	186.60	-9250.36	40.3711739	-104.8679642	0.00	
17830.00†	91.207	269.830	7162.42	9352.19	186.31	-9350.33	40.3711751	-104.8683230	0.00	
17930.00†	91.207	269.830	7160.31	9452.14	186.01	-9450.31	40.3711762	-104.8686818	0.00	
18030.00†	91.207	269.830	7158.21	9552.09	185.71	-9550.29	40.3711773	-104.8690406	0.00	
18087.25	91.207	269.830	7157.00 <sup>‡</sup>	9609.31	185.54	-9607.52	40.3711780	-104.8692460	0.00	BPZ
18130.00†	91.207	269.830	7156.10	9652.05	185.42	-9650.27	40.3711785	-104.8693994	0.00	
18137.25	91.207	269.830	7155.95	9659.29	185.40	-9657.51	40.3711786	-104.8694254	0.00	BHL (2454'FNL & 100'FWL,SEC.26)

TARGETS									
Name	MD [ft]	TVD [ft]	North [ft]	East [ft]	Grid East [US ft]	Grid North [US ft]	Latitude	Longitude	Shape
Sec.25-5N-67W	N/A	2.00	-60.11	0.17	3185352.01	1378440.06	40.3703110	-104.8347730	polygon
	2D Polygon: dimensions not calculated								
Sec.26-5N-67W	N/A	2.00	-60.11	0.17	3185352.01	1378440.06	40.3703110	-104.8347730	polygon
	2D Polygon: dimensions not calculated								
BOOTH STATE 06N BHL Rev-1 (2454'FNL & 100'FWL,SEC.26)	N/A	7157.00	185.19	-9657.68	3175694.57	1378685.35	40.3711780	-104.8694260	point
2) BOOTH STATE 06N BPZ (2454 FNL & 150 FWL, Sec.26)	18087.25	7157.00	185.54	-9607.52	3175744.72	1378685.71	40.3711780	-104.8692460	point
1) BOOTH STATE 06N LP Rev-1 (2448'FNL & 150'FEL,SEC.25)	7877.15	7372.00	215.82	600.26	3185952.07	1378715.98	40.3710560	-104.8326120	point



# Planned Wellpath Report

BOOTH STATE 06N (REV-A.0) PWP  
Page 7 of 8



REFERENCE WELLPATH IDENTIFICATION			
Operator	PDC ENERGY INC	Well	BOOTH STATE 06N
Field	WELD COUNTY (NAD83/GRID)	API/Legal	
Facility	SEC.25-T05N-R67W	Wellbore	BOOTH STATE 06N PWB
Slot	SLOT#06 BOOTH STATE 06N (2610'FSL & 752'FEL,SEC.25)		

SURVEY PROGRAM - Ref Wellbore: BOOTH STATE 06N PWB    Ref Wellpath: BOOTH STATE 06N (REV-A.0) PWP				
Start MD [ft]	End MD [ft]	Positional Uncertainty Model	Log Name/Comment	Wellbore
30.00	2000.00	OWSG MWD rev2 - Standard		BOOTH STATE 06N PWB
2000.00	18137.25	OWSG MWD rev2 (MS+IFR1)		BOOTH STATE 06N PWB



# Planned Wellpath Report

BOOTH STATE 06N (REV-A.0) PWP  
Page 8 of 8



REFERENCE WELLPATH IDENTIFICATION			
Operator	PDC ENERGY INC	Well	BOOTH STATE 06N
Field	WELD COUNTY (NAD83/GRID)	API/Legal	
Facility	SEC.25-T05N-R67W	Wellbore	BOOTH STATE 06N PWB
Slot	SLOT#06 BOOTH STATE 06N (2610'FSL & 752'FEL,SEC.25)		

WELLPATH COMMENTS				
MD [ft]	Inclination [°]	Azimuth [°]	TVD [ft]	Comment
904.47	11.765	81.130	900.00	PIERRE
1027.04	11.765	81.130	1020.00	U PAWNEE
1522.45	11.765	81.130	1505.00	U PAWNEE BASE
3897.34	11.765	81.130	3830.00	Parkman Sandstone
4425.44	11.765	81.130	4347.00	Sussex Sandstone
5008.69	11.765	81.130	4918.00	Shannon Sandstone
7265.16	36.168	272.349	7111.00	Sharon Springs
7308.38	40.052	272.025	7145.00	Niobrara A
7492.53	56.610	271.063	7267.00	Niobrara B
7633.56	69.294	270.554	7331.00	Niobrara C
9824.19	91.207	269.830	7331.00	Niobrara C
12863.48	91.207	269.830	7267.00	Niobrara B

DESIGN COMMENTS				
MD [ft]	Inclination [°]	Azimuth [°]	TVD [ft]	Comment
30.00	0.000	81.130	30.00	Tie On
300.00	0.000	81.130	300.00	End of Tangent
888.27	11.765	81.130	884.14	Build (XS)
6734.55	11.765	81.130	6607.60	KOP
7877.15	91.207	269.830	7372.00	LP
18087.25	91.207	269.830	7157.00	BPZ
18137.25	91.207	269.830	7155.95	BHL (2454'FNL & 100'FWL,SEC.26)



# Closest Approach Clearance Summary Report

BOOTH STATE 06N (REV-A.0) PWP - SPE WPTS Stop Drilling HSE Risk (2017)  
Page 1 of 5



REFERENCE WELLPATH IDENTIFICATION			
Operator	PDC ENERGY INC	Well	BOOTH STATE 06N
Field	WELD COUNTY (NAD83/GRID)	API/Legal	
Facility	SEC.25-T05N-R67W	Wellbore	BOOTH STATE 06N PWB
Slot	SLOT#06 BOOTH STATE 06N (2610'FSL & 752'FEL,SEC.25)		

REPORT SETUP INFORMATION			
Projection System	NAD83 / Lambert Colorado SP, Northern Zone (501), US feet	Software System	WellArchitect® 6.0
North Reference	Grid	User	Guenaler
Scale	0.999959	Report Generated	5/25/2024 at 9:42:03 PM
Convergence at slot	0.43° East	Database	WA_Denver

WELLPATH LOCATION						
	Local coordinates		Grid coordinates		Geographic coordinates	
	North[ft]	East[ft]	Easting[US ft]	Northing[US ft]	Latitude	Longitude
Slot Location	-75.05	0.01	3185351.84	1378500.17	40°22'13.7136"N	104°50'5.1792"W
Facility Reference Pt			3185351.83	1378575.22	40°22'14.4552"N	104°50'5.1720"W
Field Reference Pt			3296400.32	1413291.61	40°27'46.8000"N	104°26'5.1000"W

WELLPATH DATUM			
Calculation method	Minimum Curvature	(4982'GL+30'KB@5012'RKB) (RKB) to Facility Vertical Datum	5012.00ft
Horizontal Reference Pt	Slot	(4982'GL+30'KB@5012'RKB) (RKB) to Mean Sea Level	5012.00ft
Vertical Reference Pt	(4982'GL+30'KB@5012'RKB) (RKB)	(4982'GL+30'KB@5012'RKB) (RKB) to Ground Level at Slot (SLOT#06 BOOTH STATE 06N (2610'FSL & 752'FEL,SEC.25))	5012.00ft
MD Reference Pt	(4982'GL+30'KB@5012'RKB) (RKB)		
Field Vertical Reference	Mean Sea Level		

POSITIONAL UNCERTAINTY CALCULATION SETTINGS					
Ellipse Confidence Limit	3.50 Std Dev	Ellipse Start MD	30.00ft	Surface Position Uncertainty	included
Declination	7.75° East of TN	Dip Angle	66.50°	Mag Field Strength	51619 nT
Slot Surface Uncertainty @1SD		Horizontal	0.100ft	Vertical	1.000ft
Facility Surface Uncertainty @1SD		Horizontal	8.200ft	Vertical	3.000ft
Positional Uncertainty values in the WELLPATH DATA table are the projection of the ellipsoid of uncertainty onto the vertical and horizontal planes					



# Closest Approach Clearance Summary Report

BOOTH STATE 06N (REV-A.0) PWP - SPE WPTS Stop Drilling HSE Risk (2017)  
Page 2 of 5



REFERENCE WELLPATH IDENTIFICATION			
Operator	PDC ENERGY INC	Well	BOOTH STATE 06N
Field	WELD COUNTY (NAD83/GRID)	API/Legal	
Facility	SEC.25-T05N-R67W	Wellbore	BOOTH STATE 06N PWB
Slot	SLOT#06 BOOTH STATE 06N (2610'FSL & 752'FEL,SEC.25)		

PROXIMITY-SCAN RULE			
Rule Name	SPE WPTS Stop Drilling HSE Risk (2017)	Rule Based On	Ratio
Plane of Rule	Closest Approach	Threshold Value	1.00
Include Casing & Hole Size	yes	Apply Cone of Safety	no

SURVEY PROGRAM - Ref Wellbore: BOOTH STATE 06N PWB    Ref Wellpath: BOOTH STATE 06N (REV-A.0) PWP				
Start MD [ft]	End MD [ft]	Positional Uncertainty Model	Log Name/Comment	Wellbore
30.00	2000.00	OWSG MWD rev2 - Standard		BOOTH STATE 06N PWB
2000.00	18137.25	OWSG MWD rev2 (MS+IFR1)		BOOTH STATE 06N PWB



# Closest Approach Clearance Summary Report

BOOTH STATE 06N (REV-A.0) PWP - SPE WPTS Stop Drilling HSE Risk (2017)  
Page 3 of 5



REFERENCE WELLPATH IDENTIFICATION			
Operator	PDC ENERGY INC	Well	BOOTH STATE 06N
Field	WELD COUNTY (NAD83/GRID)	API/Legal	
Facility	SEC.25-T05N-R67W	Wellbore	BOOTH STATE 06N PWB
Slot	SLOT#06 BOOTH STATE 06N (2610'FSL & 752'FEL,SEC.25)		

CALCULATION RANGE & CUTOFF		
From: 30.00ft MD	To: 18137.25ft MD	C-C Cutoff: (none)

OFFSET WELL CLEARANCE SUMMARY (54 Offset Wellpaths selected) Ratios are calculated in Closest Approach plane												
Offset Facility	Offset Slot	Offset Well	Offset Wellbore	Offset Wellpath	Wellbore Status	C-C Clearance Distance			Rule Separation Ratio			
						Ref MD [ft]	Min C-C Clear Dist [ft]	Diverging from MD [ft]	Ref MD of Min Ratio [ft]	Min Ratio	Min Ratio Dvrg from [ft]	Rule Status
SEC.26-T05N-R67W	SLOT#03 Booth N #25-32D (05-123-31660) PR	Booth N #25-32D	Booth N #25-32D AWB	Booth N #25-32D AWP (PR)	Producing / injecting	12882.83	0.66	12882.83	12882.94	0.00	12882.94	FAIL
SEC.25-T05N-R67W	SLOT#28 BOOTH #25-14 (05-123-17369) PA	BOOTH #25-14 (05-123-17369) PA	BOOTH #25-14 AWB	BOOTH #25-14 AWP ( PA)	Abandoned	8620.71	301.19	8620.71	8620.45	0.03	8620.45	FAIL
SEC.26-T05N-R67W	SLOT#12 BLEHM #2 (05-123-11006) PA	BLEHM #2	BLEHM #2 AWB	BLEHM #2 AWP	Drilling	16279.73	435.99	16279.73	16279.20	0.05	16279.20	FAIL
SEC.26-T05N-R67W	SLOT#11 BLEHM N #26-8 (05-123-23344) SI	BLEHM N #26-8	BLEHM N #26-8 AWB	BLEHM N #26-8 AWP	Producing / injecting	13776.45	565.45	13776.45	13775.54	0.06	13775.54	FAIL
SEC.25-T05N-R67W	SLOT#29 BOOTH #N 25-6 (05-123-18083) SI	BOOTH #N 25-6 (05-123-18083) SI	BOOTH #N 25-6 AWB	BOOTH #N 25-6 AWP ( SI)	Producing / injecting	11121.65	585.81	11121.65	11120.68	0.07	11120.68	FAIL
SEC.25-T05N-R67W	SLOT#33 BOOTH #N 25-5 (05-123-18082) SI	BOOTH #N 25-5 (05-123-18082) SI	BOOTH #N 25-5 AWB	BOOTH #N 25-5 AWP ( SI)	Producing / injecting	12501.45	639.85	12501.45	12500.28	0.07	12500.28	FAIL
SEC.26-T05N-R67W	SLOT#15 BLEHM N #26-5 (05-123-19492) PA	BLEHM N #26-5	BLEHM N #26-5 AWB	BLEHM N #26-5 AWP	Abandoned	17409.94	654.21	17409.94	17408.72	0.07	17408.72	FAIL
SEC.26-T05N-R67W	SLOT#14 VETTER #26-13 (05-123-19998) PA	VETTER #26-13	VETTER #26-13 AWB	VETTER #26-13 AWP	Abandoned	15117.12	660.97	15117.12	15115.88	0.07	15115.88	FAIL
SEC.25-T05N-R67W	SLOT#21 BOOTH N #25-11 (05-123-22680) PA	BOOTH N #25-11 (05-123-22680) PA	BOOTH N #25-11 AWB	BOOTH N #25-11 AWP ( PA)	Abandoned	11052.47	686.80	11052.47	11051.11	0.08	11051.11	FAIL
SEC.26-T05N-R67W	SLOT#10 BOOTH #13-26 (05-123-17941) TA	BOOTH #13-26	BOOTH #13-26 AWB	BOOTH #13-26 AWP	Abandoned	17382.34	749.01	17382.34	17380.72	0.09	17380.72	FAIL
SEC.25-T05N-R67W	SLOT#20 BOOTH N #25-9 (05-123-21924) PA	BOOTH N #25-9 (05-123-21924) PA	BOOTH N #25-9 AWB	BOOTH N #25-9 AWP ( PA)	Abandoned	971.83	574.96	8313.14	8313.14	0.09	8313.14	FAIL
SEC.25-T05N-R67W	SLOT#26 BOOTH N #25-10 (05-123-21925) PA	BOOTH N #25-10 (05-123-21925) PA	BOOTH N #25-10 AWB	BOOTH N #25-10 AWP ( PA)	Abandoned	9724.05	949.37	9724.05	9721.47	0.11	9721.47	FAIL
SEC.25-T05N-R67W	SLOT#27 BOOTH N #25-12 (05-123-22681) PA	BOOTH N #25-12 (05-123-22681) PA	BOOTH N #25-12 AWB	BOOTH N #25-12 AWP ( PA)	Abandoned	12487.27	1008.97	12487.27	12484.33	0.11	12484.33	FAIL
SEC.26-T05N-R67W	SLOT#09 BOOTH #33-26 (05-123-18228) PA	BOOTH #33-26	BOOTH #33-26 AWB	BOOTH #33-26 AWP	Abandoned	14776.35	1077.90	14776.35	14773.01	0.12	14773.01	FAIL
SEC.25-T05N-R67W	SLOT#32 BOOTH #25-15 (05-123-28106) PR	BOOTH #25-15 (05-123-28106) PR	BOOTH #25-15 AWB	BOOTH #25-15 AWP ( PR)	Producing / injecting	9197.21	1135.78	9197.21	9193.54	0.13	9193.54	FAIL
SEC.26-T05N-R67W	SLOT#06 BLEHM #26-17 (05-123-23036) TA	BLEHM #26-17	BLEHM #26-17 AWB	BLEHM #26-17 AWP	Abandoned	14356.34	1258.79	14356.34	14351.82	0.14	14351.82	FAIL
SEC.25-T05N-R67W	SLOT#24 BOOTH N #25-19 (05-123-25620) SI	BOOTH N #25-19 (05-123-25620) SI	BOOTH N #25-19 AWB	BOOTH N #25-19 AWP ( SI)	Producing / injecting	11865.87	1302.77	11865.87	11861.04	0.15	11861.04	FAIL
SEC.26-T05N-R67W	SLOT#02 BLEHM N #26-19 (05-123-23361) SI	BLEHM N #26-19	BLEHM N #26-19 AWB	BLEHM N #26-19 AWP	Producing / injecting	16889.89	1319.07	16889.89	16884.93	0.15	16884.93	FAIL
SEC.25-T05N-R67W	SLOT#19 BOOTH N #25-23 (05-123-23167) PA	BOOTH N #25-23 (05-123-23167) PA	BOOTH N #25-23 AWB	BOOTH N #25-23 AWP ( PA)	Abandoned	130.00	1227.82	8882.54	8882.54	0.15	8882.54	FAIL
SEC.25-T05N-R67W	SLOT#13 BOOTH N #25-25 (05-123-22706) PA	BOOTH N #25-25 (05-123-22706) PA	BOOTH N #25-25 AWB	BOOTH N #25-25 AWP (PA)	Abandoned	11749.20	1458.94	11749.20	11743.04	0.16	11743.04	FAIL
SEC.25-T05N-R67W	SLOT#15 BOOTH N #25-13 (05-123-22708) TA	BOOTH N #25-13 (05-123-22708) TA	BOOTH N #25-13 AWB	BOOTH N #25-13 AWP ( TA)	Abandoned	11719.64	1460.27	11719.64	11713.48	0.16	11713.48	FAIL
SEC.26-T05N-R67W	SLOT#17 BLEHM #1 (05-123-10692) TA	BLEHM #1	BLEHM #1 AWB	BLEHM #1 AWP	Abandoned	17021.88	1567.21	17021.88	17014.77	0.18	17014.77	FAIL
SEC.25-T05N-R67W	SLOT#22 BOOTH #25-12 (05-123-17336) PA	BOOTH #25-12 (05-123-17336) PA	BOOTH #25-12 AWB	BOOTH #25-12 AWP ( PA)	Abandoned	9844.30	1626.15	9844.30	9836.80	0.18	9836.80	FAIL
SEC.26-T05N-R67W	SLOT#07 VETTER #26-12 (05-123-19413) PA	VETTER #26-12	VETTER #26-12 AWB	VETTER #26-12 AWP	Drilling	14784.80	1806.70	14784.80	14775.49	0.20	14775.49	FAIL
SEC.26-T05N-R67W	SLOT#08 BLEHM #3 (05-123-11103) TA	BLEHM #3	BLEHM #3 AWB	BLEHM #3 AWP	Drilling	17584.98	1796.33	17584.98	17575.76	0.20	17575.76	FAIL



# Closest Approach Clearance Summary Report

BOOTH STATE 06N (REV-A.0) PWP - SPE WPTS Stop Drilling HSE Risk (2017)  
Page 4 of 5



REFERENCE WELLPATH IDENTIFICATION			
Operator	PDC ENERGY INC	Well	BOOTH STATE 06N
Field	WELD COUNTY (NAD83/GRID)	API/Legal	
Facility	SEC.25-T05N-R67W	Wellbore	BOOTH STATE 06N PWB
Slot	SLOT#06 BOOTH STATE 06N (2610'FSL & 752'FEL,SEC.25)		

CALCULATION RANGE & CUTOFF		
From: 30.00ft MD	To: 18137.25ft MD	C-C Cutoff: (none)

OFFSET WELL CLEARANCE SUMMARY (54 Offset Wellpaths selected) Ratios are calculated in Closest Approach plane												
Offset Facility	Offset Slot	Offset Well	Offset Wellbore	Offset Wellpath	Wellbore Status	C-C Clearance Distance			Rule Separation Ratio			
						Ref MD [ft]	Min C-C Clear Dist [ft]	Diverging from MD [ft]	Ref MD of Min Ratio [ft]	Min Ratio	Min Ratio Dvrg from [ft]	Rule Status
SEC.25-T05N-R67W	SLOT#17 BOOTH #N 25-3 (05-123-15479) SI	BOOTH #N 25-3 (05-123-15479) SI	BOOTH #N 25-3 AWB	BOOTH #N 25-3 AWP ( SI)	Producing / injecting	11128.63	1971.99	11128.63	11117.56	0.22	11117.56	FAIL
SEC.25-T05N-R67W	SLOT#23 BOOTH N #25-4 (05-123-15478) SI	BOOTH N #25-4 (05-123-15478) SI	BOOTH N #25-4 AWB	BOOTH N #25-4 AWP ( SI)	Producing / injecting	12533.79	1981.48	12533.79	12522.61	0.22	12522.61	FAIL
SEC.26-T05N-R67W	SLOT#01 BLEHM N #26-03 (05-123-19438) SI	BLEHM N #26-03	BLEHM N #26-03 AWB	BLEHM N #26-03 AWP (SI)	Producing / injecting	16455.72	1987.59	16455.72	16444.42	0.22	16444.42	FAIL
SEC.25-T05N-R67W	SLOT#34 BOOTH N #25-15 (05-123-21926) PA	BOOTH N #25-15 (05-123-21926) PA	BOOTH N #25-15 AWB	BOOTH N #25-15 AWP ( PA)	Abandoned	9677.81	2000.94	9677.81	9666.22	0.23	9666.22	FAIL
SEC.25-T05N-R67W	SLOT#30 BOOTH N #25-16 (05-123-21927) PA	BOOTH N #25-16 (05-123-21927) PA	BOOTH N #25-16 AWB	BOOTH N #25-16 AWP ( PA)	Abandoned	130.00	1967.72	8473.64	8473.64	0.24	8473.64	FAIL
SEC.26-T05N-R67W	SLOT#16 BOOTH #34-26 (05-123-18230) PA	BOOTH #34-26	BOOTH #34-26 AWB	BOOTH #34-26 AWB	Abandoned	14963.28	2403.70	14963.28	14946.56	0.27	14946.56	FAIL
SEC.25-T05N-R67W	SLOT#38 Booth N #25-21D (05-123-31648) PA	Booth N #25-21D (05-123-31648) PA	Booth N #25-21D AWB	Booth N #25-21D AWP (PA)	Abandoned	10247.58	41.29	10247.58	10246.39	0.43	10246.39	FAIL
SEC.25-T05N-R67W	SLOT#35 Booth N #25-20D (05-123-31645) TA	Booth N #25-20D (05-123-31645) TA	Booth N #25-20D AWB	Booth N #25-20D AWP ( TA)	Abandoned	11639.46	78.88	11639.46	11630.06	0.62	11630.06	FAIL
SEC.25-T05N-R67W	SLOT#31 BOOTH #25-32 (05-123-19894) PA	BOOTH #25-32 (05-123-19894) PA	BOOTH #25-32 AWB	BOOTH #25-32 AWP ( PA)	Abandoned	9534.23	664.07	9534.23	9531.62	0.75	9531.62	FAIL
SEC.25-T05N-R67W	SLOT#05 BOOTH STATE 05N (2625'FSL & 752'FEL,SEC.25)	BOOTH STATE 05N	BOOTH STATE 05N PWB	BOOTH STATE 05N (REV-A.0) PWP	Planned	409.07	14.74	409.07	18137.25	1.39	18137.25	PASS
SEC.25-T05N-R67W	SLOT#07 BOOTH STATE 07NA (2595'FSL & 752'FEL,SEC.25)	BOOTH STATE 07NA	BOOTH STATE 07NA PWB	BOOTH STATE 07NA (REV-A.0) PWP	Planned	30.00	14.94	300.00	18137.25	1.57	18137.25	PASS
SEC.25-T05N-R67W	SLOT#04 BOOTH STATE 04C (2640'FSL & 752'FEL,SEC.25)	BOOTH STATE 04C	BOOTH STATE 04C PWB	BOOTH STATE 04C (REV-A.0) PWP	Planned	415.87	29.63	18137.25	18137.25	2.72	18137.25	PASS
SEC.25-T05N-R67W	SLOT#08 BOOTH STATE 08C (2580'FSL & 753'FEL,SEC.25)	BOOTH STATE 08C	BOOTH STATE 08C PWB	BOOTH STATE 08C (REV-A.0) PWP	Planned	30.00	29.87	18130.00	18137.25	2.72	18137.25	PASS
SEC.25-T05N-R67W	SLOT#09 BOOTH STATE 09N (2565'FSL & 753'FEL,SEC.25)	BOOTH STATE 09N	BOOTH STATE 09N PWB	BOOTH STATE 09N (REV-A.0) PWP	Planned	30.00	45.18	300.00	18137.25	4.07	18137.25	PASS
SEC.25-T05N-R67W	SLOT#03 BOOTH STATE 03NA (2655'FSL & 752'FEL,SEC.25)	BOOTH STATE 03NA	BOOTH STATE 03NA PWB	BOOTH STATE 03NA (REV-A.0) PWP	Planned	416.19	44.90	416.19	18137.25	4.12	18137.25	PASS
SEC.25-T05N-R67W	SLOT#36 Booth N #25-22D (05-123-31646) PA	Booth N #25-22D (05-123-31646) PA	Booth N #25-22D AWB	Booth N #25-22D AWP ( PA)	Abandoned	9190.72	336.37	9190.72	9267.50	4.18	9267.50	PASS
SEC.25-T05N-R67W	SLOT#02 BOOTH STATE 02N (2670'FSL & 752'FEL,SEC.25)	BOOTH STATE 02N	BOOTH STATE 02N PWB	BOOTH STATE 02N (REV-A.0) PWP	Planned	507.28	59.42	507.28	18137.25	5.41	18137.25	PASS
SEC.25-T05N-R67W	SLOT#10 BOOTH STATE 10N (2550'FSL & 753'FEL,SEC.25)	BOOTH STATE 10N	BOOTH STATE 10N PWB	BOOTH STATE 10N (REV-A.0) PWP	Planned	30.00	60.11	300.00	18137.25	5.42	18137.25	PASS
SEC.25-T05N-R67W	SLOT#01 BOOTH STATE 01N (2588'FNL & 752'FEL,SEC.25)	BOOTH STATE 01N	BOOTH STATE 01N PWB	BOOTH STATE 01N (REV-A.0) PWP	Planned	30.00	75.05	230.00	18137.25	6.76	18137.25	PASS
SEC.25-T05N-R67W	SLOT#11 BOOTH STATE 11N (2535'FSL & 753'FEL,SEC.25)	BOOTH STATE 11N	BOOTH STATE 11N PWB	BOOTH STATE 11N (REV-A.0) PWP	Planned	30.00	75.05	300.00	18137.25	6.77	18137.25	PASS
SEC.25-T05N-R67W	SLOT#25 Booth N #25-31D (05-123-31514) SI	Booth N #25-31D (05-123-31514) SI	Booth N #25-31D AWB	Booth N #25-31D AWP ( SI)	Producing / injecting	13125.54	1112.17	13125.54	13215.85	8.12	13215.85	PASS
SEC.25-T05N-R67W	SLOT#12 BOOTH STATE 12N (2520'FSL & 753'FEL,SEC.25)	BOOTH STATE 12N	BOOTH STATE 12N PWB	BOOTH STATE 12N (REV-A.0) PWP	Planned	30.00	89.99	300.00	18137.25	8.12	18137.25	PASS
SEC.26-T05N-R67W	SLOT#13 BOOTH #24-26 (05-123-17942) PA	BOOTH #24-26	BOOTH #24-26 AWB	BOOTH #24-26 AWP	Abandoned	16556.26	2341.94	16556.26	16839.81	11.13	16839.81	PASS
SEC.26-T05N-R67W	SLOT#04 BOOTH N #25-33D (05-123-31666) PR	BOOTH N #25-33D	BOOTH N #25-33D AWB	BOOTH N #25-33D AWP	Drilling	12881.98	1611.84	12881.98	13066.59	11.68	13066.59	PASS
SEC.25-T05N-R67W	SLOT#18 Booth N #25-18D (05-123-31511) PA	Booth N #25-18D (05-123-31511) PA	Booth N #25-18D AWB	Booth N #25-18D AWP ( PA)	Abandoned	10515.39	1095.57	10515.39	10705.30	11.69	10705.30	PASS



# Closest Approach Clearance Summary Report

BOOTH STATE 06N (REV-A.0) PWP - SPE WPTS Stop Drilling HSE Risk (2017)  
Page 5 of 5



REFERENCE WELLPATH IDENTIFICATION			
Operator	PDC ENERGY INC	Well	BOOTH STATE 06N
Field	WELD COUNTY (NAD83/GRID)	API/Legal	
Facility	SEC.25-T05N-R67W	Wellbore	BOOTH STATE 06N PWB
Slot	SLOT#06 BOOTH STATE 06N (2610'FSL & 752'FEL,SEC.25)		

CALCULATION RANGE & CUTOFF		
From: 30.00ft MD	To: 18137.25ft MD	C-C Cutoff: (none)

OFFSET WELL CLEARANCE SUMMARY (54 Offset Wellpaths selected) Ratios are calculated in Closest Approach plane												
Offset Facility	Offset Slot	Offset Well	Offset Wellbore	Offset Wellpath	Wellbore Status	C-C Clearance Distance			Rule Separation Ratio			
						Ref MD [ft]	Min C-C Clear Dist [ft]	Diverging from MD [ft]	Ref MD of Min Ratio [ft]	Min Ratio	Min Ratio Dvrg from [ft]	Rule Status
SEC.26-T05N-R67W	SLOT#05 BLEHM N #26-1 (05-123-22113) PA Gyro Need Survey	BLEHM N #26-1	BLEHM N #26-1 AWB	BLEHM N #26-1 AWP	Abandoned	13574.14	1896.40	13574.14	13812.79	12.40	13812.79	PASS
SEC.25-T05N-R67W	SLOT#37 Booth N #25-24D (05-123-31647) PA	Booth N #25-24D (05-123-31647) PA	Booth N #25-24D AWB	Booth N #25-24D AWP ( PA)	Abandoned	10447.09	1462.42	10447.09	10653.88	16.42	10653.88	PASS
SEC.25-T05N-R67W	SLOT#14 BOOTH N #25-14 (05-123-22709) PA	BOOTH N #25-14 (05-123-22709) PA	BOOTH N #25-14 AWB	BOOTH N #25-14 AWP ( PA)	Abandoned	10951.04	2289.93	10951.04	11411.20	22.67	11411.20	PASS
SEC.25-T05N-R67W	SLOT#16 BOOTH #25-11 (05-123-16856) PA	BOOTH #25-11 (05-123-16856) PA	BOOTH #25-11 AWB	BOOTH #25-11 AWP ( PA)	Abandoned	8548.18	1721.07	8548.18	8876.20	26.11	8876.20	PASS