

# PDC ENERGY INC

Location: COLORADO Slot: SLOT#04 BOOTH STATE 04C (2640'FSL & 752'FEL,SEC.25)

Field: WELD COUNTY (NAD83/GRID) Well: BOOTH STATE 04C

Facility: SEC.25-T05N-R67W Wellbore: BOOTH STATE 04C PWB

**Plot reference wellpath is BOOTH STATE 04C (REV-A.0) PWP**

Grid System: NAD83 / Lambert Colorado SP, Northern Zone (501), US feet  
 True vertical depths are referenced to (4983'GL+30'KB@5013'RKB) (RKB)  
 Reference wellpath measured depths are referenced to (4983'GL+30'KB@5013'RKB) (RKB)  
 (4983'GL+30'KB@5013'RKB) (RKB) to Mean Sea Level: 5013 feet  
 Mean Sea Level to Ground level (At Slot: SLOT#04 BOOTH STATE 04C (2640'FSL & 752'FEL,SEC.25)): 0 feet  
 Offset wellpath MDs are referenced to each path's default MD datum  
 Created by: gueneran on 2024-05-26; Database: WA, Denver

### Location Information

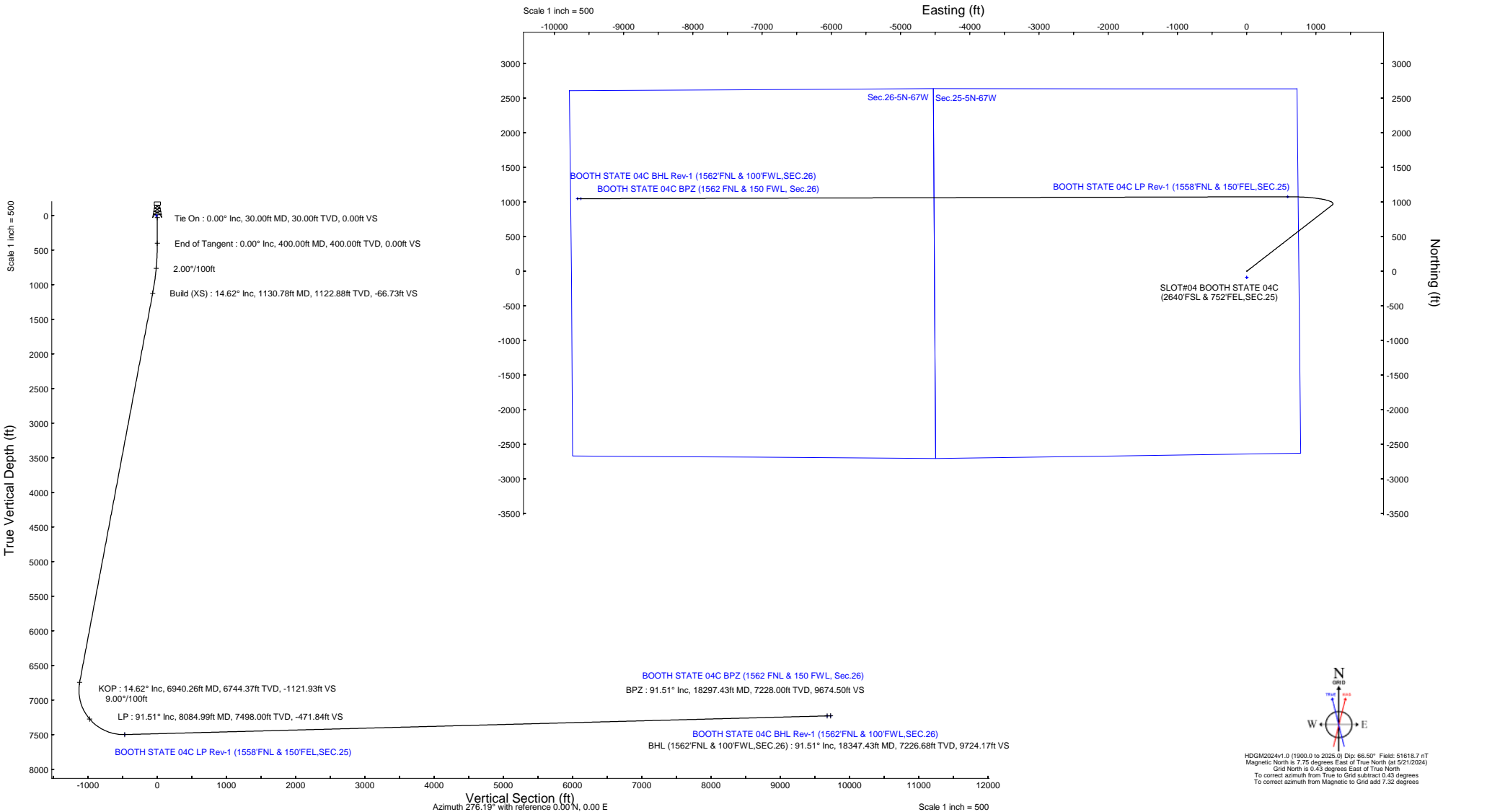
Facility Name		Grid East (US ft)	Grid North (US ft)	Latitude	Longitude	
SEC.25-T05N-R67W		3185351.829	1378575.217	40°22'14.4552"N	104°50'5.1828"W	
Slot	Local N (ft)	Local E (ft)	Grid East (US ft)	Grid North (US ft)	Latitude	Longitude
SLOT#04 BOOTH STATE 04C (2640'FSL & 752'FEL,SEC.25)	-45.18	0.06	3185351.889	1378530.044	40°22'14.0088"N	104°50'5.1758"W
(4983'GL+30'KB@5013'RKB) (RKB) to Ground level (At Slot: SLOT#04 BOOTH STATE 04C (2640'FSL & 752'FEL,SEC.25))				5013ft		
Mean Sea Level to Ground level (At Slot: SLOT#04 BOOTH STATE 04C (2640'FSL & 752'FEL,SEC.25))				0ft		
(4983'GL+30'KB@5013'RKB) (RKB) to Mean Sea Level				5013ft		

### Targets

Name	MD (ft)	TVD (ft)	Local N (ft)	Local E (ft)	Grid East (US ft)	Grid North (US ft)	Latitude	Longitude
Sec.25-5N-67W	N/A	3.00	-89.99	0.12	3185352.01	1378440.06	40°22'13.1196"N	104°50'5.1828"W
Sec.26-5N-67W	N/A	3.00	-89.99	0.12	3185352.01	1378440.06	40°22'13.1196"N	104°50'5.1828"W
BOOTH STATE 04C BHL Rev-1 (1562'FNL & 100'FWL,SEC.26)	N/A	7228.00	1047.83	-9667.70	3175684.60	1379577.82	40°22'25.0608"N	104°52'9.9804"W
BOOTH STATE 04C BPZ (1562'FNL & 150'FWL, Sec.26)	18297.43	7228.00	1048.18	-9617.55	3175734.75	1379578.18	40°22'25.0608"N	104°52'9.3324"W
BOOTH STATE 04C LP Rev-1 (1558'FNL & 150'FEL,SEC.25)	8084.99	7498.00	1076.27	591.28	3185943.14	1379606.27	40°22'24.6000"N	104°49'57.4320"W

### Well Profile Data

Design Comment	MD (ft)	Inc (°)	Az (°)	TVD (ft)	Local N (ft)	Local E (ft)	DLS (°/100ft)	VS (ft)
Tie On	30.00	0.00	52.227	30.00	0.00	0.00	0.00	0.00
End of Tangent	400.00	0.00	52.227	400.00	0.00	0.00	0.00	0.00
Build (XS)	1130.78	14.616	52.227	1122.88	56.78	73.28	2.00	-66.73
KOP	6940.26	14.616	52.227	6744.37	954.72	1232.00	0.00	-1121.93
LP	8084.99	91.515	269.842	7498.00	1076.27	591.28	9.00	-471.84
BPZ	18297.43	91.515	269.842	7228.00	1048.18	-9617.55	0.00	9674.50
BHL (1562'FNL & 100'FWL,SEC.26)	18347.43	91.515	269.842	7226.68	1048.04	-9667.53	0.00	9724.17





# Planned Wellpath Report

BOOTH STATE 04C (REV-A.0) PWP  
Page 1 of 8



## REFERENCE WELLPATH IDENTIFICATION

Operator	PDC ENERGY INC	Well	BOOTH STATE 04C
Field	WELD COUNTY (NAD83/GRID)	API/Legal	
Facility	SEC.25-T05N-R67W	Wellbore	BOOTH STATE 04C PWB
Slot	SLOT#04 BOOTH STATE 04C (2640'FSL & 752'FEL,SEC.25)		

## REPORT SETUP INFORMATION

Projection System	NAD83 / Lambert Colorado SP, Northern Zone (501), US feet	Software System	WellArchitect® 6.0
North Reference	Grid	User	Guenaler
Scale	0.999959	Report Generated	5/25/2024 at 9:21:33 PM
Convergence at slot	0.43° East	Database	WA_Denver

## WELLPATH LOCATION

	Local coordinates		Grid coordinates		Geographic coordinates	
	North[ft]	East[ft]	Easting[US ft]	Northing[US ft]	Latitude	Longitude
Slot Location	-45.18	0.06	3185351.89	1378530.04	40.3705580°	-104.8347710°
Facility Reference Pt			3185351.83	1378575.22	40.3706820°	-104.8347700°
Field Reference Pt			3296400.32	1413291.61	40.4630000°	-104.4347500°

## WELLPATH DATUM

Calculation method	Minimum curvature	(4983'GL+30'KB@5013'RKB) (RKB) to Facility Vertical Datum	5013.00ft
Horizontal Reference Pt	Slot	(4983'GL+30'KB@5013'RKB) (RKB) to Mean Sea Level	5013.00ft
Vertical Reference Pt	(4983'GL+30'KB@5013'RKB) (RKB)	(4983'GL+30'KB@5013'RKB) (RKB) to Ground Level at Slot (SLOT#04 BOOTH STATE 04C (2640'FSL & 752'FEL,SEC.25))	5013.00ft
MD Reference Pt	(4983'GL+30'KB@5013'RKB) (RKB)	Section Origin	N 0.00, E 0.00 ft
Field Vertical Reference	Mean Sea Level	Section Azimuth	276.19°



# Planned Wellpath Report

BOOTH STATE 04C (REV-A.0) PWP  
Page 2 of 8



REFERENCE WELLPATH IDENTIFICATION			
Operator	PDC ENERGY INC	Well	BOOTH STATE 04C
Field	WELD COUNTY (NAD83/GRID)	API/Legal	
Facility	SEC.25-T05N-R67W	Wellbore	BOOTH STATE 04C PWB
Slot	SLOT#04 BOOTH STATE 04C (2640'FSL & 752'FEL, SEC.25)		

WELLPATH DATA (209 stations) † = interpolated, ‡ = extrapolated station										
MD [ft]	Inclination [°]	Azimuth [°]	TVD [ft]	Vert Sect [ft]	North [ft]	East [ft]	Latitude	Longitude	DLS ["/100ft]	Comments
0.00†	0.000	52.227	0.00	0.00	0.00	0.00	40.3705580	-104.8347710	0.00	
30.00	0.000	52.227	30.00	0.00	0.00	0.00	40.3705580	-104.8347710	0.00	Tie On
130.00†	0.000	52.227	130.00	0.00	0.00	0.00	40.3705580	-104.8347710	0.00	
230.00†	0.000	52.227	230.00	0.00	0.00	0.00	40.3705580	-104.8347710	0.00	
330.00†	0.000	52.227	330.00	0.00	0.00	0.00	40.3705580	-104.8347710	0.00	
400.00	0.000	52.227	400.00	0.00	0.00	0.00	40.3705580	-104.8347710	0.00	End of Tangent
430.00†	0.600	52.227	430.00	-0.11	0.10	0.12	40.3705583	-104.8347706	2.00	
530.00†	2.600	52.227	529.96	-2.12	1.81	2.33	40.3705629	-104.8347626	2.00	
630.00†	4.600	52.227	629.75	-6.64	5.65	7.29	40.3705734	-104.8347447	2.00	
730.00†	6.600	52.227	729.27	-13.67	11.63	15.01	40.3705896	-104.8347168	2.00	
830.00†	8.600	52.227	828.39	-23.19	19.73	25.46	40.3706116	-104.8346791	2.00	
902.57†	10.051	52.227	900.00	-31.65	26.93	34.76	40.3706312	-104.8346455	2.00	PIERRE
930.00†	10.600	52.227	926.98	-35.19	29.94	38.64	40.3706394	-104.8346315	2.00	
1024.94†	12.499	52.227	1020.00	-48.87	41.59	53.67	40.3706710	-104.8345773	2.00	U PAWNEE
1030.00†	12.600	52.227	1024.93	-49.66	42.26	54.54	40.3706729	-104.8345742	2.00	
1130.00†	14.600	52.227	1122.13	-66.59	56.66	73.12	40.3707120	-104.8345071	2.00	
1130.78	14.616	52.227	1122.88	-66.73	56.78	73.28	40.3707124	-104.8345065	2.00	Build (XS)
1230.00†	14.616	52.227	1218.89	-84.75	72.12	93.07	40.3707540	-104.8344351	0.00	
1330.00†	14.616	52.227	1315.65	-102.91	87.58	113.01	40.3707961	-104.8343631	0.00	
1430.00†	14.616	52.227	1412.42	-121.08	103.03	132.96	40.3708381	-104.8342911	0.00	
1525.68†	14.616	52.227	1505.00	-138.46	117.82	152.04	40.3708783	-104.8342222	0.00	U PAWNEE BASE
1530.00†	14.616	52.227	1509.18	-139.24	118.49	152.90	40.3708801	-104.8342191	0.00	
1630.00†	14.616	52.227	1605.95	-157.40	133.95	172.85	40.3709221	-104.8341471	0.00	
1730.00†	14.616	52.227	1702.71	-175.57	149.40	192.79	40.3709641	-104.8340751	0.00	
1830.00†	14.616	52.227	1799.47	-193.73	164.86	212.74	40.3710061	-104.8340031	0.00	
1930.00†	14.616	52.227	1896.24	-211.90	180.31	232.68	40.3710481	-104.8339311	0.00	
2030.00†	14.616	52.227	1993.00	-230.06	195.77	252.63	40.3710902	-104.8338591	0.00	
2130.00†	14.616	52.227	2089.77	-248.22	211.23	272.58	40.3711322	-104.8337871	0.00	
2230.00†	14.616	52.227	2186.53	-266.39	226.68	292.52	40.3711742	-104.8337151	0.00	
2330.00†	14.616	52.227	2283.29	-284.55	242.14	312.47	40.3712162	-104.8336431	0.00	
2430.00†	14.616	52.227	2380.06	-302.71	257.60	332.41	40.3712582	-104.8335711	0.00	
2530.00†	14.616	52.227	2476.82	-320.88	273.05	352.36	40.3713002	-104.8334991	0.00	
2630.00†	14.616	52.227	2573.59	-339.04	288.51	372.30	40.3713422	-104.8334271	0.00	
2730.00†	14.616	52.227	2670.35	-357.20	303.96	392.25	40.3713842	-104.8333551	0.00	
2830.00†	14.616	52.227	2767.11	-375.37	319.42	412.19	40.3714263	-104.8332831	0.00	
2930.00†	14.616	52.227	2863.88	-393.53	334.88	432.14	40.3714683	-104.8332111	0.00	
3030.00†	14.616	52.227	2960.64	-411.69	350.33	452.08	40.3715103	-104.8331391	0.00	
3130.00†	14.616	52.227	3057.41	-429.86	365.79	472.03	40.3715523	-104.8330671	0.00	
3230.00†	14.616	52.227	3154.17	-448.02	381.25	491.97	40.3715943	-104.8329951	0.00	
3330.00†	14.616	52.227	3250.93	-466.18	396.70	511.92	40.3716363	-104.8329232	0.00	
3430.00†	14.616	52.227	3347.70	-484.35	412.16	531.87	40.3716783	-104.8328512	0.00	
3530.00†	14.616	52.227	3444.46	-502.51	427.62	551.81	40.3717204	-104.8327792	0.00	
3630.00†	14.616	52.227	3541.23	-520.67	443.07	571.76	40.3717624	-104.8327072	0.00	
3730.00†	14.616	52.227	3637.99	-538.84	458.53	591.70	40.3718044	-104.8326352	0.00	
3830.00†	14.616	52.227	3734.75	-557.00	473.98	611.65	40.3718464	-104.8325632	0.00	



# Planned Wellpath Report

BOOTH STATE 04C (REV-A.0) PWP  
Page 3 of 8



REFERENCE WELLPATH IDENTIFICATION			
Operator	PDC ENERGY INC	Well	BOOTH STATE 04C
Field	WELD COUNTY (NAD83/GRID)	API/Legal	
Facility	SEC.25-T05N-R67W	Wellbore	BOOTH STATE 04C PWB
Slot	SLOT#04 BOOTH STATE 04C (2640'FSL & 752'FEL,SEC.25)		

WELLPATH DATA (209 stations) † = interpolated, ‡ = extrapolated station										
MD [ft]	Inclination [°]	Azimuth [°]	TVD [ft]	Vert Sect [ft]	North [ft]	East [ft]	Latitude	Longitude	DLS [°/100ft]	Comments
3928.43†	14.616	52.227	3830.00	-574.88	489.20	631.28	40.3718877	-104.8324923	0.00	Parkman Sandstone
3930.00†	14.616	52.227	3831.52	-575.16	489.44	631.59	40.3718884	-104.8324912	0.00	
4030.00†	14.616	52.227	3928.28	-593.33	504.90	651.54	40.3719304	-104.8324192	0.00	
4130.00†	14.616	52.227	4025.05	-611.49	520.35	671.48	40.3719724	-104.8323472	0.00	
4230.00†	14.616	52.227	4121.81	-629.65	535.81	691.43	40.3720144	-104.8322752	0.00	
4330.00†	14.616	52.227	4218.58	-647.82	551.27	711.37	40.3720565	-104.8322032	0.00	
4430.00†	14.616	52.227	4315.34	-665.98	566.72	731.32	40.3720985	-104.8321312	0.00	
4462.72†	14.616	52.227	4347.00	-671.92	571.78	737.85	40.3721122	-104.8321076	0.00	Sussex Sandstone
4530.00†	14.616	52.227	4412.10	-684.14	582.18	751.27	40.3721405	-104.8320592	0.00	
4630.00†	14.616	52.227	4508.87	-702.31	597.63	771.21	40.3721825	-104.8319872	0.00	
4730.00†	14.616	52.227	4605.63	-720.47	613.09	791.16	40.3722245	-104.8319152	0.00	
4830.00†	14.616	52.227	4702.40	-738.63	628.55	811.10	40.3722665	-104.8318432	0.00	
4930.00†	14.616	52.227	4799.16	-756.80	644.00	831.05	40.3723085	-104.8317712	0.00	
5030.00†	14.616	52.227	4895.92	-774.96	659.46	850.99	40.3723505	-104.8316992	0.00	
5052.81†	14.616	52.227	4918.00	-779.10	662.99	855.54	40.3723601	-104.8316828	0.00	Shannon Sandstone
5130.00†	14.616	52.227	4992.69	-793.12	674.92	870.94	40.3723926	-104.8316272	0.00	
5230.00†	14.616	52.227	5089.45	-811.29	690.37	890.88	40.3724346	-104.8315552	0.00	
5330.00†	14.616	52.227	5186.22	-829.45	705.83	910.83	40.3724766	-104.8314832	0.00	
5430.00†	14.616	52.227	5282.98	-847.61	721.29	930.77	40.3725186	-104.8314112	0.00	
5530.00†	14.616	52.227	5379.74	-865.78	736.74	950.72	40.3725606	-104.8313392	0.00	
5630.00†	14.616	52.227	5476.51	-883.94	752.20	970.67	40.3726026	-104.8312672	0.00	
5730.00†	14.616	52.227	5573.27	-902.10	767.65	990.61	40.3726446	-104.8311952	0.00	
5830.00†	14.616	52.227	5670.04	-920.27	783.11	1010.56	40.3726866	-104.8311232	0.00	
5930.00†	14.616	52.227	5766.80	-938.43	798.57	1030.50	40.3727287	-104.8310512	0.00	
6030.00†	14.616	52.227	5863.56	-956.60	814.02	1050.45	40.3727707	-104.8309792	0.00	
6130.00†	14.616	52.227	5960.33	-974.76	829.48	1070.39	40.3728127	-104.8309072	0.00	
6230.00†	14.616	52.227	6057.09	-992.92	844.94	1090.34	40.3728547	-104.8308352	0.00	
6330.00†	14.616	52.227	6153.86	-1011.09	860.39	1110.28	40.3728967	-104.8307632	0.00	
6430.00†	14.616	52.227	6250.62	-1029.25	875.85	1130.23	40.3729387	-104.8306912	0.00	
6530.00†	14.616	52.227	6347.38	-1047.41	891.31	1150.17	40.3729807	-104.8306192	0.00	
6630.00†	14.616	52.227	6444.15	-1065.58	906.76	1170.12	40.3730227	-104.8305472	0.00	
6730.00†	14.616	52.227	6540.91	-1083.74	922.22	1190.07	40.3730648	-104.8304752	0.00	
6830.00†	14.616	52.227	6637.68	-1101.90	937.67	1210.01	40.3731068	-104.8304032	0.00	
6930.00†	14.616	52.227	6734.44	-1120.07	953.13	1229.96	40.3731488	-104.8303312	0.00	
6940.26	14.616	52.227	6744.37	-1121.93	954.72	1232.00	40.3731531	-104.8303238	0.00	KOP
7030.00†	9.707	20.772	6832.16	-1132.00	968.75	1243.65	40.3731914	-104.8302816	9.00	
7130.00†	10.658	328.336	6930.78	-1128.44	984.54	1241.79	40.3732347	-104.8302879	9.00	
7230.00†	17.135	301.356	7027.90	-1109.40	1000.10	1224.32	40.3732778	-104.8303502	9.00	
7318.86†	24.255	290.890	7111.00	-1079.85	1013.44	1196.04	40.3733150	-104.8304513	9.00	Sharon Springs
7330.00†	25.183	289.983	7121.12	-1075.33	1015.07	1191.67	40.3733196	-104.8304669	9.00	
7356.64†	27.423	288.050	7145.00	-1063.82	1018.91	1180.52	40.3733303	-104.8305069	9.00	Niobrara A
7430.00†	33.695	283.972	7208.15	-1027.09	1029.07	1144.67	40.3733590	-104.8306352	9.00	
7503.62†	40.085	281.047	7267.00	-983.19	1038.55	1101.54	40.3733859	-104.8307898	9.00	Niobrara B
7530.00†	42.390	280.182	7286.84	-965.85	1041.75	1084.45	40.3733950	-104.8308510	9.00	
7592.62†	47.884	278.404	7331.00	-921.55	1048.88	1040.66	40.3734155	-104.8310080	9.00	Niobrara C



# Planned Wellpath Report

BOOTH STATE 04C (REV-A.0) PWP  
Page 4 of 8



REFERENCE WELLPATH IDENTIFICATION			
Operator	PDC ENERGY INC	Well	BOOTH STATE 04C
Field	WELD COUNTY (NAD83/GRID)	API/Legal	
Facility	SEC.25-T05N-R67W	Wellbore	BOOTH STATE 04C PWB
Slot	SLOT#04 BOOTH STATE 04C (2640'FSL & 752'FEL,SEC.25)		

WELLPATH DATA (209 stations) † = interpolated, ‡ = extrapolated station										
MD [ft]	Inclination [°]	Azimuth [°]	TVD [ft]	Vert Sect [ft]	North [ft]	East [ft]	Latitude	Longitude	DLS [°/100ft]	Comments
7630.00†	51.174	277.485	7355.26	-893.13	1052.81	1012.50	40.3734269	-104.8311089	9.00	
7665.93†	54.344	276.678	7377.00	-864.53	1056.33	984.12	40.3734371	-104.8312107	9.00	Fort Hays
7730.00†	60.007	275.385	7411.72	-810.72	1061.96	930.60	40.3734537	-104.8314026	9.00	
7830.00†	68.867	273.631	7454.83	-720.65	1069.00	840.76	40.3734749	-104.8317249	9.00	
7836.11†	69.409	273.532	7457.00	-714.95	1069.35	835.06	40.3734760	-104.8317453	9.00	Codell
7918.57†	76.728	272.248	7481.00	-636.25	1073.31	756.33	40.3734885	-104.8320277	9.00	Carlile
7930.00†	77.743	272.077	7483.53	-625.12	1073.73	745.19	40.3734898	-104.8320677	9.00	
8030.00†	86.628	270.625	7497.11	-526.51	1076.05	646.25	40.3734982	-104.8324227	9.00	
8084.99	91.515	269.842	7498.00†	-471.84	1076.27	591.28	40.3735000	-104.8326200	9.00	LP
8130.00†	91.515	269.842	7496.81	-427.12	1076.15	546.29	40.3735006	-104.8327815	0.00	
8230.00†	91.515	269.842	7494.17	-327.77	1075.88	446.32	40.3735019	-104.8331402	0.00	
8330.00†	91.515	269.842	7491.52	-228.41	1075.60	346.36	40.3735032	-104.8334990	0.00	
8430.00†	91.515	269.842	7488.88	-129.06	1075.33	246.39	40.3735045	-104.8338578	0.00	
8530.00†	91.515	269.842	7486.23	-29.71	1075.05	146.43	40.3735058	-104.8342165	0.00	
8630.00†	91.515	269.842	7483.59	69.64	1074.78	46.46	40.3735071	-104.8345753	0.00	
8728.00†	91.515	269.842	7481.00	167.01	1074.51	-51.50	40.3735084	-104.8349269	0.00	Carlile
8730.00†	91.515	269.842	7480.95	169.00	1074.50	-53.50	40.3735084	-104.8349341	0.00	
8830.00†	91.515	269.842	7478.30	268.35	1074.22	-153.47	40.3735097	-104.8352929	0.00	
8930.00†	91.515	269.842	7475.66	367.70	1073.95	-253.43	40.3735110	-104.8356516	0.00	
9030.00†	91.515	269.842	7473.02	467.06	1073.67	-353.40	40.3735123	-104.8360104	0.00	
9130.00†	91.515	269.842	7470.37	566.41	1073.40	-453.36	40.3735136	-104.8363692	0.00	
9230.00†	91.515	269.842	7467.73	665.76	1073.12	-553.33	40.3735149	-104.8367279	0.00	
9330.00†	91.515	269.842	7465.08	765.11	1072.85	-653.29	40.3735162	-104.8370867	0.00	
9430.00†	91.515	269.842	7462.44	864.47	1072.57	-753.25	40.3735175	-104.8374455	0.00	
9530.00†	91.515	269.842	7459.80	963.82	1072.30	-853.22	40.3735188	-104.8378042	0.00	
9630.00†	91.515	269.842	7457.15	1063.17	1072.02	-953.18	40.3735201	-104.8381630	0.00	
9635.77†	91.515	269.842	7457.00	1068.90	1072.01	-958.95	40.3735202	-104.8381837	0.00	Codell
9730.00†	91.515	269.842	7454.51	1162.52	1071.75	-1053.15	40.3735214	-104.8385218	0.00	
9830.00†	91.515	269.842	7451.86	1261.88	1071.47	-1153.11	40.3735227	-104.8388805	0.00	
9930.00†	91.515	269.842	7449.22	1361.23	1071.20	-1253.08	40.3735240	-104.8392393	0.00	
10030.00†	91.515	269.842	7446.58	1460.58	1070.92	-1353.04	40.3735253	-104.8395981	0.00	
10130.00†	91.515	269.842	7443.93	1559.94	1070.65	-1453.01	40.3735266	-104.8399568	0.00	
10230.00†	91.515	269.842	7441.29	1659.29	1070.37	-1552.97	40.3735278	-104.8403156	0.00	
10330.00†	91.515	269.842	7438.65	1758.64	1070.10	-1652.94	40.3735291	-104.8406744	0.00	
10430.00†	91.515	269.842	7436.00	1857.99	1069.82	-1752.90	40.3735304	-104.8410331	0.00	
10530.00†	91.515	269.842	7433.36	1957.35	1069.55	-1852.87	40.3735317	-104.8413919	0.00	
10630.00†	91.515	269.842	7430.71	2056.70	1069.27	-1952.83	40.3735330	-104.8417507	0.00	
10730.00†	91.515	269.842	7428.07	2156.05	1069.00	-2052.80	40.3735343	-104.8421094	0.00	
10830.00†	91.515	269.842	7425.43	2255.40	1068.72	-2152.76	40.3735355	-104.8424682	0.00	
10930.00†	91.515	269.842	7422.78	2354.76	1068.45	-2252.72	40.3735368	-104.8428270	0.00	
11030.00†	91.515	269.842	7420.14	2454.11	1068.17	-2352.69	40.3735381	-104.8431857	0.00	
11130.00†	91.515	269.842	7417.49	2553.46	1067.90	-2452.65	40.3735394	-104.8435445	0.00	
11230.00†	91.515	269.842	7414.85	2652.82	1067.62	-2552.62	40.3735407	-104.8439033	0.00	
11330.00†	91.515	269.842	7412.21	2752.17	1067.35	-2652.58	40.3735419	-104.8442621	0.00	
11430.00†	91.515	269.842	7409.56	2851.52	1067.07	-2752.55	40.3735432	-104.8446208	0.00	



# Planned Wellpath Report

BOOTH STATE 04C (REV-A.0) PWP  
Page 5 of 8



REFERENCE WELLPATH IDENTIFICATION			
Operator	PDC ENERGY INC	Well	BOOTH STATE 04C
Field	WELD COUNTY (NAD83/GRID)	API/Legal	
Facility	SEC.25-T05N-R67W	Wellbore	BOOTH STATE 04C PWB
Slot	SLOT#04 BOOTH STATE 04C (2640'FSL & 752'FEL,SEC.25)		

WELLPATH DATA (209 stations) † = interpolated, ‡ = extrapolated station										
MD [ft]	Inclination [°]	Azimuth [°]	TVD [ft]	Vert Sect [ft]	North [ft]	East [ft]	Latitude	Longitude	DLS [°/100ft]	Comments
11530.00†	91.515	269.842	7406.92	2950.87	1066.80	-2852.51	40.3735445	-104.8449796	0.00	
11630.00†	91.515	269.842	7404.28	3050.23	1066.52	-2952.48	40.3735457	-104.8453384	0.00	
11730.00†	91.515	269.842	7401.63	3149.58	1066.25	-3052.44	40.3735470	-104.8456971	0.00	
11830.00†	91.515	269.842	7398.99	3248.93	1065.97	-3152.41	40.3735483	-104.8460559	0.00	
11930.00†	91.515	269.842	7396.34	3348.28	1065.70	-3252.37	40.3735496	-104.8464147	0.00	
12030.00†	91.515	269.842	7393.70	3447.64	1065.42	-3352.34	40.3735508	-104.8467734	0.00	
12130.00†	91.515	269.842	7391.06	3546.99	1065.15	-3452.30	40.3735521	-104.8471322	0.00	
12230.00†	91.515	269.842	7388.41	3646.34	1064.87	-3552.27	40.3735533	-104.8474910	0.00	
12330.00†	91.515	269.842	7385.77	3745.70	1064.60	-3652.23	40.3735546	-104.8478497	0.00	
12430.00†	91.515	269.842	7383.13	3845.05	1064.32	-3752.19	40.3735559	-104.8482085	0.00	
12530.00†	91.515	269.842	7380.48	3944.40	1064.05	-3852.16	40.3735571	-104.8485673	0.00	
12630.00†	91.515	269.842	7377.84	4043.75	1063.77	-3952.12	40.3735584	-104.8489260	0.00	
12661.68†	91.515	269.842	7377.00	4075.22	1063.68	-3983.79	40.3735588	-104.8490397	0.00	Fort Hays
12730.00†	91.515	269.842	7375.19	4143.11	1063.50	-4052.09	40.3735597	-104.8492848	0.00	
12830.00†	91.515	269.842	7372.55	4242.46	1063.22	-4152.05	40.3735609	-104.8496436	0.00	
12930.00†	91.515	269.842	7369.91	4341.81	1062.95	-4252.02	40.3735622	-104.8500023	0.00	
13030.00†	91.515	269.842	7367.26	4441.16	1062.67	-4351.98	40.3735634	-104.8503611	0.00	
13130.00†	91.515	269.842	7364.62	4540.52	1062.40	-4451.95	40.3735647	-104.8507199	0.00	
13230.00†	91.515	269.842	7361.97	4639.87	1062.12	-4551.91	40.3735659	-104.8510787	0.00	
13330.00†	91.515	269.842	7359.33	4739.22	1061.85	-4651.88	40.3735672	-104.8514374	0.00	
13430.00†	91.515	269.842	7356.69	4838.58	1061.57	-4751.84	40.3735684	-104.8517962	0.00	
13530.00†	91.515	269.842	7354.04	4937.93	1061.30	-4851.81	40.3735697	-104.8521550	0.00	
13630.00†	91.515	269.842	7351.40	5037.28	1061.02	-4951.77	40.3735709	-104.8525137	0.00	
13730.00†	91.515	269.842	7348.76	5136.63	1060.75	-5051.74	40.3735722	-104.8528725	0.00	
13830.00†	91.515	269.842	7346.11	5235.99	1060.47	-5151.70	40.3735734	-104.8532313	0.00	
13930.00†	91.515	269.842	7343.47	5335.34	1060.20	-5251.66	40.3735747	-104.8535900	0.00	
14030.00†	91.515	269.842	7340.82	5434.69	1059.92	-5351.63	40.3735759	-104.8539488	0.00	
14130.00†	91.515	269.842	7338.18	5534.04	1059.65	-5451.59	40.3735772	-104.8543076	0.00	
14230.00†	91.515	269.842	7335.54	5633.40	1059.37	-5551.56	40.3735784	-104.8546663	0.00	
14330.00†	91.515	269.842	7332.89	5732.75	1059.10	-5651.52	40.3735796	-104.8550251	0.00	
14401.57†	91.515	269.842	7331.00	5803.86	1058.90	-5723.07	40.3735805	-104.8552819	0.00	Niobrara C
14430.00†	91.515	269.842	7330.25	5832.10	1058.82	-5751.49	40.3735809	-104.8553839	0.00	
14530.00†	91.515	269.842	7327.60	5931.46	1058.55	-5851.45	40.3735821	-104.8557426	0.00	
14630.00†	91.515	269.842	7324.96	6030.81	1058.27	-5951.42	40.3735834	-104.8561014	0.00	
14730.00†	91.515	269.842	7322.32	6130.16	1058.00	-6051.38	40.3735846	-104.8564602	0.00	
14830.00†	91.515	269.842	7319.67	6229.51	1057.72	-6151.35	40.3735858	-104.8568190	0.00	
14930.00†	91.515	269.842	7317.03	6328.87	1057.44	-6251.31	40.3735871	-104.8571777	0.00	
15030.00†	91.515	269.842	7314.39	6428.22	1057.17	-6351.28	40.3735883	-104.8575365	0.00	
15130.00†	91.515	269.842	7311.74	6527.57	1056.89	-6451.24	40.3735895	-104.8578953	0.00	
15230.00†	91.515	269.842	7309.10	6626.92	1056.62	-6551.21	40.3735908	-104.8582540	0.00	
15330.00†	91.515	269.842	7306.45	6726.28	1056.34	-6651.17	40.3735920	-104.8586128	0.00	
15430.00†	91.515	269.842	7303.81	6825.63	1056.07	-6751.13	40.3735932	-104.8589716	0.00	
15530.00†	91.515	269.842	7301.17	6924.98	1055.79	-6851.10	40.3735945	-104.8593303	0.00	
15630.00†	91.515	269.842	7298.52	7024.34	1055.52	-6951.06	40.3735957	-104.8596891	0.00	
15730.00†	91.515	269.842	7295.88	7123.69	1055.24	-7051.03	40.3735969	-104.8600479	0.00	



# Planned Wellpath Report

BOOTH STATE 04C (REV-A.0) PWP  
Page 6 of 8



REFERENCE WELLPATH IDENTIFICATION			
Operator	PDC ENERGY INC	Well	BOOTH STATE 04C
Field	WELD COUNTY (NAD83/GRID)	API/Legal	
Facility	SEC.25-T05N-R67W	Wellbore	BOOTH STATE 04C PWB
Slot	SLOT#04 BOOTH STATE 04C (2640'FSL & 752'FEL,SEC.25)		

WELLPATH DATA (209 stations) † = interpolated, ‡ = extrapolated station										
---	--	--	--	--	--	--	--	--	--	--

MD [ft]	Inclination [°]	Azimuth [°]	TVD [ft]	Vert Sect [ft]	North [ft]	East [ft]	Latitude	Longitude	DLS [°/100ft]	Comments
15830.00†	91.515	269.842	7293.23	7223.04	1054.97	-7150.99	40.3735981	-104.8604066	0.00	
15930.00†	91.515	269.842	7290.59	7322.39	1054.69	-7250.96	40.3735994	-104.8607654	0.00	
16030.00†	91.515	269.842	7287.95	7421.75	1054.42	-7350.92	40.3736006	-104.8611242	0.00	
16130.00†	91.515	269.842	7285.30	7521.10	1054.14	-7450.89	40.3736018	-104.8614829	0.00	
16230.00†	91.515	269.842	7282.66	7620.45	1053.87	-7550.85	40.3736030	-104.8618417	0.00	
16330.00†	91.515	269.842	7280.02	7719.80	1053.59	-7650.82	40.3736042	-104.8622005	0.00	
16430.00†	91.515	269.842	7277.37	7819.16	1053.32	-7750.78	40.3736055	-104.8625593	0.00	
16530.00†	91.515	269.842	7274.73	7918.51	1053.04	-7850.75	40.3736067	-104.8629180	0.00	
16630.00†	91.515	269.842	7272.08	8017.86	1052.77	-7950.71	40.3736079	-104.8632768	0.00	
16730.00†	91.515	269.842	7269.44	8117.22	1052.49	-8050.68	40.3736091	-104.8636356	0.00	
16822.30†	91.515	269.842	7267.00	8208.92	1052.24	-8142.94	40.3736102	-104.8639667	0.00	Niobrara B
16830.00†	91.515	269.842	7266.80	8216.57	1052.22	-8150.64	40.3736103	-104.8639943	0.00	
16930.00†	91.515	269.842	7264.15	8315.92	1051.94	-8250.60	40.3736115	-104.8643531	0.00	
17030.00†	91.515	269.842	7261.51	8415.27	1051.67	-8350.57	40.3736127	-104.8647119	0.00	
17130.00†	91.515	269.842	7258.86	8514.63	1051.39	-8450.53	40.3736140	-104.8650706	0.00	
17230.00†	91.515	269.842	7256.22	8613.98	1051.12	-8550.50	40.3736152	-104.8654294	0.00	
17330.00†	91.515	269.842	7253.58	8713.33	1050.84	-8650.46	40.3736164	-104.8657882	0.00	
17430.00†	91.515	269.842	7250.93	8812.68	1050.57	-8750.43	40.3736176	-104.8661469	0.00	
17530.00†	91.515	269.842	7248.29	8912.04	1050.29	-8850.39	40.3736188	-104.8665057	0.00	
17630.00†	91.515	269.842	7245.65	9011.39	1050.02	-8950.36	40.3736200	-104.8668645	0.00	
17730.00†	91.515	269.842	7243.00	9110.74	1049.74	-9050.32	40.3736212	-104.8672232	0.00	
17830.00†	91.515	269.842	7240.36	9210.10	1049.47	-9150.29	40.3736224	-104.8675820	0.00	
17930.00†	91.515	269.842	7237.71	9309.45	1049.19	-9250.25	40.3736236	-104.8679408	0.00	
18030.00†	91.515	269.842	7235.07	9408.80	1048.92	-9350.22	40.3736248	-104.8682996	0.00	
18130.00†	91.515	269.842	7232.43	9508.15	1048.64	-9450.18	40.3736260	-104.8686583	0.00	
18230.00†	91.515	269.842	7229.78	9607.51	1048.37	-9550.15	40.3736272	-104.8690171	0.00	
18297.43	91.515	269.842	7228.00 <sup>2</sup>	9674.50	1048.18	-9617.55	40.3736280	-104.8692590	0.00	BPZ
18330.00†	91.515	269.842	7227.14	9706.86	1048.09	-9650.11	40.3736284	-104.8693759	0.00	
18347.43	91.515	269.842	7226.68	9724.17	1048.04	-9667.53	40.3736286	-104.8694384	0.00	BHL (1562'FNL & 100'FWL,SEC.26)



# Planned Wellpath Report

BOOTH STATE 04C (REV-A.0) PWP  
Page 7 of 8



REFERENCE WELLPATH IDENTIFICATION			
Operator	PDC ENERGY INC	Well	BOOTH STATE 04C
Field	WELD COUNTY (NAD83/GRID)	API/Legal	
Facility	SEC.25-T05N-R67W	Wellbore	BOOTH STATE 04C PWB
Slot	SLOT#04 BOOTH STATE 04C (2640'FSL & 752'FEL,SEC.25)		

TARGETS									
Name	MD [ft]	TVD [ft]	North [ft]	East [ft]	Grid East [US ft]	Grid North [US ft]	Latitude	Longitude	Shape
Sec.25-5N-67W	N/A	3.00	-89.99	0.12	3185352.01	1378440.06	40.3703110	-104.8347730	polygon
	2D Polygon: dimensions not calculated								
Sec.26-5N-67W	N/A	3.00	-89.99	0.12	3185352.01	1378440.06	40.3703110	-104.8347730	polygon
	2D Polygon: dimensions not calculated								
BOOTH STATE 04C BHL Rev-1 (1562'FNL & 100'FWL,SEC.26)	N/A	7228.00	1047.83	-9667.70	3175684.60	1379577.82	<b>40.3736280</b>	<b>-104.8694390</b>	point
2) BOOTH STATE 04C BPZ (1562 FNL & 150 FWL, Sec.26)	18297.43	7228.00	1048.18	-9617.55	3175734.75	1379578.18	<b>40.3736280</b>	<b>-104.8692590</b>	point
1) BOOTH STATE 04C LP Rev-1 (1558'FNL & 150'FEL,SEC.25)	8084.99	7498.00	1076.27	591.28	3185943.14	1379606.27	<b>40.3735000</b>	<b>-104.8326200</b>	point

SURVEY PROGRAM - Ref Wellbore: BOOTH STATE 04C PWB    Ref Wellpath: BOOTH STATE 04C (REV-A.0) PWP				
Start MD [ft]	End MD [ft]	Positional Uncertainty Model	Log Name/Comment	Wellbore
30.00	2000.00	OWSG MWD rev2 - Standard		BOOTH STATE 04C PWB
2000.00	18347.43	OWSG MWD rev2 (MS+IFR1)		BOOTH STATE 04C PWB



# Planned Wellpath Report

BOOTH STATE 04C (REV-A.0) PWP  
Page 8 of 8



REFERENCE WELLPATH IDENTIFICATION			
Operator	PDC ENERGY INC	Well	BOOTH STATE 04C
Field	WELD COUNTY (NAD83/GRID)	API/Legal	
Facility	SEC.25-T05N-R67W	Wellbore	BOOTH STATE 04C PWB
Slot	SLOT#04 BOOTH STATE 04C (2640'FSL & 752'FEL,SEC.25)		

WELLPATH COMMENTS				
MD [ft]	Inclination [°]	Azimuth [°]	TVD [ft]	Comment
902.57	10.051	52.227	900.00	PIERRE
1024.94	12.499	52.227	1020.00	U PAWNEE
1525.68	14.616	52.227	1505.00	U PAWNEE BASE
3928.43	14.616	52.227	3830.00	Parkman Sandstone
4462.72	14.616	52.227	4347.00	Sussex Sandstone
5052.81	14.616	52.227	4918.00	Shannon Sandstone
7318.86	24.255	290.890	7111.00	Sharon Springs
7356.64	27.423	288.050	7145.00	Niobrara A
7503.62	40.085	281.047	7267.00	Niobrara B
7592.62	47.884	278.404	7331.00	Niobrara C
7665.93	54.344	276.678	7377.00	Fort Hays
7836.11	69.409	273.532	7457.00	Codell
7918.57	76.728	272.248	7481.00	Carlile
8728.00	91.515	269.842	7481.00	Carlile
9635.77	91.515	269.842	7457.00	Codell
12661.68	91.515	269.842	7377.00	Fort Hays
14401.57	91.515	269.842	7331.00	Niobrara C
16822.30	91.515	269.842	7267.00	Niobrara B

DESIGN COMMENTS				
MD [ft]	Inclination [°]	Azimuth [°]	TVD [ft]	Comment
30.00	0.000	52.227	30.00	Tie On
400.00	0.000	52.227	400.00	End of Tangent
1130.78	14.616	52.227	1122.88	Build (XS)
6940.26	14.616	52.227	6744.37	KOP
8084.99	91.515	269.842	7498.00	LP
18297.43	91.515	269.842	7228.00	BPZ
18347.43	91.515	269.842	7226.68	BHL (1562'FNL & 100'FWL,SEC.26)



# Closest Approach Clearance Summary Report

BOOTH STATE 04C (REV-A.0) PWP - SPE WPTS Stop Drilling HSE Risk (2017)  
Page 1 of 5



REFERENCE WELLPATH IDENTIFICATION			
Operator	PDC ENERGY INC	Well	BOOTH STATE 04C
Field	WELD COUNTY (NAD83/GRID)	API/Legal	
Facility	SEC.25-T05N-R67W	Wellbore	BOOTH STATE 04C PWB
Slot	SLOT#04 BOOTH STATE 04C (2640'FSL & 752'FEL,SEC.25)		

REPORT SETUP INFORMATION			
Projection System	NAD83 / Lambert Colorado SP, Northern Zone (501), US feet	Software System	WellArchitect® 6.0
North Reference	Grid	User	Guenaler
Scale	0.999959	Report Generated	5/25/2024 at 9:42:49 PM
Convergence at slot	0.43° East	Database	WA_Denver

WELLPATH LOCATION						
	Local coordinates		Grid coordinates		Geographic coordinates	
	North[ft]	East[ft]	Easting[US ft]	Northing[US ft]	Latitude	Longitude
Slot Location	-45.18	0.06	3185351.89	1378530.04	40°22'14.0088"N	104°50'5.1756"W
Facility Reference Pt			3185351.83	1378575.22	40°22'14.4552"N	104°50'5.1720"W
Field Reference Pt			3296400.32	1413291.61	40°27'46.8000"N	104°26'5.1000"W

WELLPATH DATUM			
Calculation method	Minimum Curvature	(4983'GL+30'KB@5013'RKB) (RKB) to Facility Vertical Datum	5013.00ft
Horizontal Reference Pt	Slot	(4983'GL+30'KB@5013'RKB) (RKB) to Mean Sea Level	5013.00ft
Vertical Reference Pt	(4983'GL+30'KB@5013'RKB) (RKB)	(4983'GL+30'KB@5013'RKB) (RKB) to Ground Level at Slot (SLOT#04 BOOTH STATE 04C (2640'FSL & 752'FEL,SEC.25))	5013.00ft
MD Reference Pt	(4983'GL+30'KB@5013'RKB) (RKB)		
Field Vertical Reference	Mean Sea Level		

POSITIONAL UNCERTAINTY CALCULATION SETTINGS					
Ellipse Confidence Limit	3.50 Std Dev	Ellipse Start MD	30.00ft	Surface Position Uncertainty	included
Declination	7.75° East of TN	Dip Angle	66.50°	Mag Field Strength	51619 nT
Slot Surface Uncertainty @1SD		Horizontal	0.100ft	Vertical	1.000ft
Facility Surface Uncertainty @1SD		Horizontal	8.200ft	Vertical	3.000ft
Positional Uncertainty values in the WELLPATH DATA table are the projection of the ellipsoid of uncertainty onto the vertical and horizontal planes					



# Closest Approach Clearance Summary Report

BOOTH STATE 04C (REV-A.0) PWP - SPE WPTS Stop Drilling HSE Risk (2017)  
Page 2 of 5



REFERENCE WELLPATH IDENTIFICATION			
Operator	PDC ENERGY INC	Well	BOOTH STATE 04C
Field	WELD COUNTY (NAD83/GRID)	API/Legal	
Facility	SEC.25-T05N-R67W	Wellbore	BOOTH STATE 04C PWB
Slot	SLOT#04 BOOTH STATE 04C (2640'FSL & 752'FEL,SEC.25)		

PROXIMITY-SCAN RULE			
Rule Name	SPE WPTS Stop Drilling HSE Risk (2017)	Rule Based On	Ratio
Plane of Rule	Closest Approach	Threshold Value	1.00
Include Casing & Hole Size	yes	Apply Cone of Safety	no

SURVEY PROGRAM - Ref Wellbore: BOOTH STATE 04C PWB    Ref Wellpath: BOOTH STATE 04C (REV-A.0) PWP				
Start MD [ft]	End MD [ft]	Positional Uncertainty Model	Log Name/Comment	Wellbore
30.00	2000.00	OWSG MWD rev2 - Standard		BOOTH STATE 04C PWB
2000.00	18347.43	OWSG MWD rev2 (MS+IFR1)		BOOTH STATE 04C PWB



# Closest Approach Clearance Summary Report

BOOTH STATE 04C (REV-A.0) PWP - SPE WPTS Stop Drilling HSE Risk (2017)  
Page 3 of 5



REFERENCE WELLPATH IDENTIFICATION			
Operator	PDC ENERGY INC	Well	BOOTH STATE 04C
Field	WELD COUNTY (NAD83/GRID)	API/Legal	
Facility	SEC.25-T05N-R67W	Wellbore	BOOTH STATE 04C PWB
Slot	SLOT#04 BOOTH STATE 04C (2640'FSL & 752'FEL,SEC.25)		

CALCULATION RANGE & CUTOFF		
From: 30.00ft MD	To: 18347.43ft MD	C-C Cutoff: (none)

OFFSET WELL CLEARANCE SUMMARY (54 Offset Wellpaths selected) Ratios are calculated in Closest Approach plane												
Offset Facility	Offset Slot	Offset Well	Offset Wellbore	Offset Wellpath	Wellbore Status	C-C Clearance Distance			Rule Separation Ratio			
						Ref MD [ft]	Min C-C Clear Dist [ft]	Diverging from MD [ft]	Ref MD of Min Ratio [ft]	Min Ratio	Min Ratio Dvrg from [ft]	Rule Status
SEC.26-T05N-R67W	SLOT#14 VETTER #26-13 (05-123-19998) PA	VETTER #26-13	VETTER #26-13 AWB	VETTER #26-13 AWP	Abandoned	15319.54	230.93	15319.54	15319.36	0.03	15319.36	FAIL
SEC.25-T05N-R67W	SLOT#32 BOOTH #25-15 (05-123-28106) PR	BOOTH #25-15 (05-123-28106) PR	BOOTH #25-15 AWB	BOOTH #25-15 AWP ( PR)	Producing / injecting	9398.98	245.14	9398.98	9398.77	0.03	9398.77	FAIL
SEC.26-T05N-R67W	SLOT#15 BLEHM N #26-5 (05-123-19492) PA	BLEHM N #26-5	BLEHM N #26-5 AWB	BLEHM N #26-5 AWP	Abandoned	17612.65	238.18	17612.65	17612.45	0.03	17612.45	FAIL
SEC.25-T05N-R67W	SLOT#33 BOOTH #N 25-5 (05-123-18082) SI	BOOTH #N 25-5 (05-123-18082) SI	BOOTH #N 25-5 AWB	BOOTH #N 25-5 AWP ( SI)	Producing / injecting	12703.54	251.49	12703.54	12703.31	0.03	12703.31	FAIL
SEC.25-T05N-R67W	SLOT#29 BOOTH #N 25-6 (05-123-18083) SI	BOOTH #N 25-6 (05-123-18083) SI	BOOTH #N 25-6 AWB	BOOTH #N 25-6 AWP ( SI)	Producing / injecting	11323.55	305.24	11323.55	11323.22	0.03	11323.22	FAIL
SEC.26-T05N-R67W	SLOT#11 BLEHM N #26-8 (05-123-23344) SI	BLEHM N #26-8	BLEHM N #26-8 AWB	BLEHM N #26-8 AWP	Producing / injecting	13978.68	326.16	13978.68	13978.31	0.04	13978.31	FAIL
SEC.26-T05N-R67W	SLOT#06 BLEHM #26-17 (05-123-23036) TA	BLEHM #26-17	BLEHM #26-17 AWB	BLEHM #26-17 AWP	Abandoned	14558.79	367.05	14558.79	14558.32	0.04	14558.32	FAIL
SEC.25-T05N-R67W	SLOT#24 BOOTH N #25-19 (05-123-25620) SI	BOOTH N #25-19 (05-123-25620) SI	BOOTH N #25-19 AWB	BOOTH N #25-19 AWP ( SI)	Producing / injecting	12068.01	411.57	12068.01	12067.42	0.04	12067.42	FAIL
SEC.26-T05N-R67W	SLOT#02 BLEHM N #26-19 (05-123-23361) SI	BLEHM N #26-19	BLEHM N #26-19 AWB	BLEHM N #26-19 AWP	Producing / injecting	17092.68	426.79	17092.68	17092.04	0.05	17092.04	FAIL
SEC.26-T05N-R67W	SLOT#12 BLEHM #2 (05-123-11006) PA	BLEHM #2	BLEHM #2 AWB	BLEHM #2 AWP	Drilling	16482.26	456.16	16482.26	16481.52	0.05	16481.52	FAIL
SEC.25-T05N-R67W	SLOT#28 BOOTH #25-14 (05-123-17369) PA	BOOTH #25-14 (05-123-17369) PA	BOOTH #25-14 AWB	BOOTH #25-14 AWP ( PA)	Abandoned	1489.23	471.55	8821.01	8821.01	0.06	8821.01	FAIL
SEC.25-T05N-R67W	SLOT#22 BOOTH #25-12 (05-123-17336) PA	BOOTH #25-12 (05-123-17336) PA	BOOTH #25-12 AWB	BOOTH #25-12 AWP ( PA)	Abandoned	10046.26	735.38	10046.26	10044.37	0.08	10044.37	FAIL
SEC.26-T05N-R67W	SLOT#08 BLEHM #3 (05-123-11103) TA	BLEHM #3	BLEHM #3 AWB	BLEHM #3 AWP	Drilling	17787.97	903.90	17787.97	17785.07	0.10	17785.07	FAIL
SEC.26-T05N-R67W	SLOT#07 VETTER #26-12 (05-123-19413) PA	VETTER #26-12	VETTER #26-12 AWB	VETTER #26-12 AWP	Drilling	14987.43	914.87	14987.43	14984.47	0.10	14984.47	FAIL
SEC.25-T05N-R67W	SLOT#17 BOOTH #N 25-3 (05-123-15479) SI	BOOTH #N 25-3 (05-123-15479) SI	BOOTH #N 25-3 AWB	BOOTH #N 25-3 AWP ( SI)	Producing / injecting	11330.82	1080.94	11330.82	11326.71	0.12	11326.71	FAIL
SEC.25-T05N-R67W	SLOT#23 BOOTH N #25-4 (05-123-15478) SI	BOOTH N #25-4 (05-123-15478) SI	BOOTH N #25-4 AWB	BOOTH N #25-4 AWP ( SI)	Producing / injecting	12736.17	1090.13	12736.17	12731.98	0.12	12731.98	FAIL
SEC.26-T05N-R67W	SLOT#01 BLEHM N #26-03 (05-123-19438) SI	BLEHM N #26-03	BLEHM N #26-03 AWB	BLEHM N #26-03 AWP (SI)	Producing / injecting	16658.60	1095.41	16658.60	16654.34	0.12	16654.34	FAIL
SEC.26-T05N-R67W	SLOT#03 Booth N #25-32D (05-123-31660) PR	Booth N #25-32D	Booth N #25-32D AWB	Booth N #25-32D AWP (PR)	Producing / injecting	13084.01	887.17	13084.01	13126.11	0.13	13126.11	FAIL
SEC.25-T05N-R67W	SLOT#21 BOOTH N #25-11 (05-123-22680) PA	BOOTH N #25-11 (05-123-22680) PA	BOOTH N #25-11 AWB	BOOTH N #25-11 AWP ( PA)	Abandoned	11254.08	1577.83	11254.08	11245.20	0.17	11245.20	FAIL
SEC.25-T05N-R67W	SLOT#20 BOOTH N #25-9 (05-123-21924) PA	BOOTH N #25-9 (05-123-21924) PA	BOOTH N #25-9 AWB	BOOTH N #25-9 AWP ( PA)	Abandoned	30.00	608.81	8506.30	8506.30	0.18	8506.30	FAIL
SEC.26-T05N-R67W	SLOT#10 BOOTH #13-26 (05-123-17941) TA	BOOTH #13-26	BOOTH #13-26 AWB	BOOTH #13-26 AWP	Abandoned	17584.75	1641.40	17584.75	17575.02	0.19	17575.02	FAIL
SEC.25-T05N-R67W	SLOT#26 BOOTH N #25-10 (05-123-21925) PA	BOOTH N #25-10 (05-123-21925) PA	BOOTH N #25-10 AWB	BOOTH N #25-10 AWP ( PA)	Abandoned	30.00	1461.99	9930.00	9913.39	0.20	9913.39	FAIL
SEC.25-T05N-R67W	SLOT#27 BOOTH N #25-12 (05-123-22681) PA	BOOTH N #25-12 (05-123-22681) PA	BOOTH N #25-12 AWB	BOOTH N #25-12 AWP ( PA)	Abandoned	12689.00	1900.31	12689.00	12676.04	0.21	12676.04	FAIL
SEC.26-T05N-R67W	SLOT#09 BOOTH #33-26 (05-123-18228) PA	BOOTH #33-26	BOOTH #33-26 AWB	BOOTH #33-26 AWP	Abandoned	14978.36	1969.73	14978.36	14964.43	0.22	14964.43	FAIL
SEC.25-T05N-R67W	SLOT#31 BOOTH #25-32 (05-123-19894) PA	BOOTH #25-32 (05-123-19894) PA	BOOTH #25-32 AWB	BOOTH #25-32 AWP ( PA)	Abandoned	9735.95	226.64	9735.95	9735.52	0.24	9735.52	FAIL



# Closest Approach Clearance Summary Report

BOOTH STATE 04C (REV-A.0) PWP - SPE WPTS Stop Drilling HSE Risk (2017)  
Page 4 of 5



REFERENCE WELLPATH IDENTIFICATION			
Operator	PDC ENERGY INC	Well	BOOTH STATE 04C
Field	WELD COUNTY (NAD83/GRID)	API/Legal	
Facility	SEC.25-T05N-R67W	Wellbore	BOOTH STATE 04C PWB
Slot	SLOT#04 BOOTH STATE 04C (2640'FSL & 752'FEL,SEC.25)		

CALCULATION RANGE & CUTOFF		
From: 30.00ft MD	To: 18347.43ft MD	C-C Cutoff: (none)

OFFSET WELL CLEARANCE SUMMARY (54 Offset Wellpaths selected) Ratios are calculated in Closest Approach plane												
Offset Facility	Offset Slot	Offset Well	Offset Wellbore	Offset Wellpath	Wellbore Status	C-C Clearance Distance			Rule Separation Ratio			
						Ref MD [ft]	Min C-C Clear Dist [ft]	Diverging from MD [ft]	Ref MD of Min Ratio [ft]	Min Ratio	Min Ratio Dvrg from [ft]	Rule Status
SEC.25-T05N-R67W	SLOT#19 BOOTH N #25-23 (05-123-23167) PA	BOOTH N #25-23 (05-123-23167) PA	BOOTH N #25-23 AWB	BOOTH N #25-23 AWP ( PA)	Abandoned	130.00	1256.07	9070.92	9070.92	0.25	9070.92	FAIL
SEC.25-T05N-R67W	SLOT#13 BOOTH N #25-25 (05-123-22706) PA	BOOTH N #25-25 (05-123-22706) PA	BOOTH N #25-25 AWB	BOOTH N #25-25 AWP (PA)	Abandoned	11950.73	2350.12	11950.73	11930.91	0.26	11930.91	FAIL
SEC.25-T05N-R67W	SLOT#15 BOOTH N #25-13 (05-123-22708) TA	BOOTH N #25-13 (05-123-22708) TA	BOOTH N #25-13 AWB	BOOTH N #25-13 AWP ( TA)	Abandoned	11921.18	2351.44	11921.18	11901.33	0.26	11901.33	FAIL
SEC.26-T05N-R67W	SLOT#17 BLEHM #1 (05-123-10692) TA	BLEHM #1	BLEHM #1 AWB	BLEHM #1 AWP	Abandoned	17224.07	2459.52	17224.07	17202.19	0.28	17202.19	FAIL
SEC.25-T05N-R67W	SLOT#34 BOOTH N #25-15 (05-123-21926) PA	BOOTH N #25-15 (05-123-21926) PA	BOOTH N #25-15 AWB	BOOTH N #25-15 AWP ( PA)	Abandoned	130.00	2177.04	9849.00	9849.00	0.32	9849.00	FAIL
SEC.25-T05N-R67W	SLOT#30 BOOTH N #25-16 (05-123-21927) PA	BOOTH N #25-16 (05-123-21927) PA	BOOTH N #25-16 AWB	BOOTH N #25-16 AWP ( PA)	Abandoned	130.00	1997.60	8654.68	8654.68	0.34	8654.68	FAIL
SEC.26-T05N-R67W	SLOT#16 BOOTH #34-26 (05-123-18230) PA	BOOTH #34-26	BOOTH #34-26 AWB	BOOTH #34-26 AWB	Abandoned	15165.03	3295.57	15165.03	15125.86	0.37	15125.86	FAIL
SEC.25-T05N-R67W	SLOT#05 BOOTH STATE 05N (2625'FSL & 752'FEL,SEC.25)	BOOTH STATE 05N	BOOTH STATE 05N PWB	BOOTH STATE 05N (REV-A.0) PWP	Planned	30.00	14.94	18347.43	18347.43	1.51	18347.43	PASS
SEC.25-T05N-R67W	SLOT#25 Booth N #25-31D (05-123-31514) SI	Booth N #25-31D (05-123-31514) SI	Booth N #25-31D AWB	Booth N #25-31D AWP ( SI)	Producing / injecting	13328.30	220.02	13328.30	13333.82	1.58	13333.82	PASS
SEC.25-T05N-R67W	SLOT#03 BOOTH STATE 03NA (2655'FSL & 752'FEL,SEC.25)	BOOTH STATE 03NA	BOOTH STATE 03NA PWB	BOOTH STATE 03NA (REV-A.0) PWP	Planned	30.00	15.30	8130.00	615.31	1.59	18347.43	PASS
SEC.25-T05N-R67W	SLOT#18 Booth N #25-18D (05-123-31511) PA	Booth N #25-18D (05-123-31511) PA	Booth N #25-18D AWB	Booth N #25-18D AWP ( PA)	Abandoned	10718.11	204.87	10718.11	10737.60	2.15	10737.60	PASS
SEC.25-T05N-R67W	SLOT#02 BOOTH STATE 02N (2670'FSL & 752'FEL,SEC.25)	BOOTH STATE 02N	BOOTH STATE 02N PWB	BOOTH STATE 02N (REV-A.0) PWP	Planned	662.95	27.48	662.95	18347.43	2.71	18347.43	PASS
SEC.25-T05N-R67W	SLOT#06 BOOTH STATE 06N (2610'FSL & 752'FEL,SEC.25)	BOOTH STATE 06N	BOOTH STATE 06N PWB	BOOTH STATE 06N (REV-A.0) PWP	Planned	416.75	29.63	18330.00	18347.43	2.72	18347.43	PASS
SEC.25-T05N-R67W	SLOT#01 BOOTH STATE 01N (2588'FNL & 752'FEL,SEC.25)	BOOTH STATE 01N	BOOTH STATE 01N PWB	BOOTH STATE 01N (REV-A.0) PWP	Planned	30.00	45.18	230.00	18347.43	4.07	18347.43	PASS
SEC.25-T05N-R67W	SLOT#07 BOOTH STATE 07NA (2595'FSL & 752'FEL,SEC.25)	BOOTH STATE 07NA	BOOTH STATE 07NA PWB	BOOTH STATE 07NA (REV-A.0) PWP	Planned	30.00	44.81	18347.43	18347.43	4.21	18347.43	PASS
SEC.25-T05N-R67W	SLOT#08 BOOTH STATE 08C (2580'FSL & 753'FEL,SEC.25)	BOOTH STATE 08C	BOOTH STATE 08C PWB	BOOTH STATE 08C (REV-A.0) PWP	Planned	30.00	59.75	400.00	18347.43	5.41	18347.43	PASS
SEC.26-T05N-R67W	SLOT#05 BLEHM N #26-1 (05-123-22113) PA Gyro Need Survey	BLEHM N #26-1	BLEHM N #26-1 AWB	BLEHM N #26-1 AWP	Abandoned	13777.32	1001.53	13777.32	13854.77	6.56	13854.77	PASS
SEC.25-T05N-R67W	SLOT#09 BOOTH STATE 09N (2565'FSL & 753'FEL,SEC.25)	BOOTH STATE 09N	BOOTH STATE 09N PWB	BOOTH STATE 09N (REV-A.0) PWP	Planned	30.00	75.05	14930.00	18347.43	6.79	18347.43	PASS
SEC.25-T05N-R67W	SLOT#35 Booth N #25-20D (05-123-31645) TA	Booth N #25-20D (05-123-31645) TA	Booth N #25-20D AWB	Booth N #25-20D AWP ( TA)	Abandoned	11843.74	929.47	11843.74	11783.42	7.52	11783.42	PASS
SEC.25-T05N-R67W	SLOT#10 BOOTH STATE 10N (2550'FSL & 753'FEL,SEC.25)	BOOTH STATE 10N	BOOTH STATE 10N PWB	BOOTH STATE 10N (REV-A.0) PWP	Planned	30.00	89.99	400.00	18347.43	8.12	18347.43	PASS
SEC.25-T05N-R67W	SLOT#11 BOOTH STATE 11N (2535'FSL & 753'FEL,SEC.25)	BOOTH STATE 11N	BOOTH STATE 11N PWB	BOOTH STATE 11N (REV-A.0) PWP	Planned	30.00	104.92	230.00	18347.43	9.48	18347.43	PASS
SEC.25-T05N-R67W	SLOT#38 Booth N #25-21D (05-123-31648) PA	Booth N #25-21D (05-123-31648) PA	Booth N #25-21D AWB	Booth N #25-21D AWP (PA)	Abandoned	10450.17	931.87	10450.17	10532.81	10.51	10532.81	PASS
SEC.25-T05N-R67W	SLOT#12 BOOTH STATE 12N (2520'FSL & 753'FEL,SEC.25)	BOOTH STATE 12N	BOOTH STATE 12N PWB	BOOTH STATE 12N (REV-A.0) PWP	Planned	30.00	119.86	230.00	18347.43	10.82	18347.43	PASS
SEC.25-T05N-R67W	SLOT#16 BOOTH #25-11 (05-123-16856) PA	BOOTH #25-11 (05-123-16856) PA	BOOTH #25-11 AWB	BOOTH #25-11 AWP ( PA)	Abandoned	8752.78	839.25	8752.78	8833.09	12.51	8833.09	PASS
SEC.25-T05N-R67W	SLOT#36 Booth N #25-22D (05-123-31646) PA	Booth N #25-22D (05-123-31646) PA	Booth N #25-22D AWB	Booth N #25-22D AWP ( PA)	Abandoned	9391.39	1227.22	9391.39	9741.56	14.76	9741.56	PASS



# Closest Approach Clearance Summary Report

BOOTH STATE 04C (REV-A.0) PWP - SPE WPTS Stop Drilling HSE Risk (2017)  
Page 5 of 5



REFERENCE WELLPATH IDENTIFICATION			
Operator	PDC ENERGY INC	Well	BOOTH STATE 04C
Field	WELD COUNTY (NAD83/GRID)	API/Legal	
Facility	SEC.25-T05N-R67W	Wellbore	BOOTH STATE 04C PWB
Slot	SLOT#04 BOOTH STATE 04C (2640'FSL & 752'FEL,SEC.25)		

CALCULATION RANGE & CUTOFF		
From: 30.00ft MD	To: 18347.43ft MD	C-C Cutoff: (none)

OFFSET WELL CLEARANCE SUMMARY (54 Offset Wellpaths selected) Ratios are calculated in Closest Approach plane												
Offset Facility	Offset Slot	Offset Well	Offset Wellbore	Offset Wellpath	Wellbore Status	C-C Clearance Distance			Rule Separation Ratio			
						Ref MD [ft]	Min C-C Clear Dist [ft]	Diverging from MD [ft]	Ref MD of Min Ratio [ft]	Min Ratio	Min Ratio Dvrg from [ft]	Rule Status
SEC.26-T05N-R67W	SLOT#13 BOOTH #24-26 (05-123-17942) PA	BOOTH #24-26	BOOTH #24-26 AWB	BOOTH #24-26 AWP	Abandoned	16766.32	3235.23	16766.32	17272.93	15.17	17272.93	PASS
SEC.26-T05N-R67W	SLOT#04 BOOTH N #25-33D (05-123-31666) PR	BOOTH N #25-33D	BOOTH N #25-33D AWB	BOOTH N #25-33D AWP	Drilling	13082.21	2502.08	13082.21	13498.29	17.77	13498.29	PASS
SEC.25-T05N-R67W	SLOT#37 Booth N #25-24D (05-123-31647) PA	Booth N #25-24D (05-123-31647) PA	Booth N #25-24D AWB	Booth N #25-24D AWP ( PA)	Abandoned	10647.27	2352.63	10647.27	11169.63	25.43	11169.63	PASS
SEC.25-T05N-R67W	SLOT#14 BOOTH N #25-14 (05-123-22709) PA	BOOTH N #25-14 (05-123-22709) PA	BOOTH N #25-14 AWB	BOOTH N #25-14 AWP ( PA)	Abandoned	11155.35	3181.35	11155.35	12018.61	30.27	12018.61	PASS