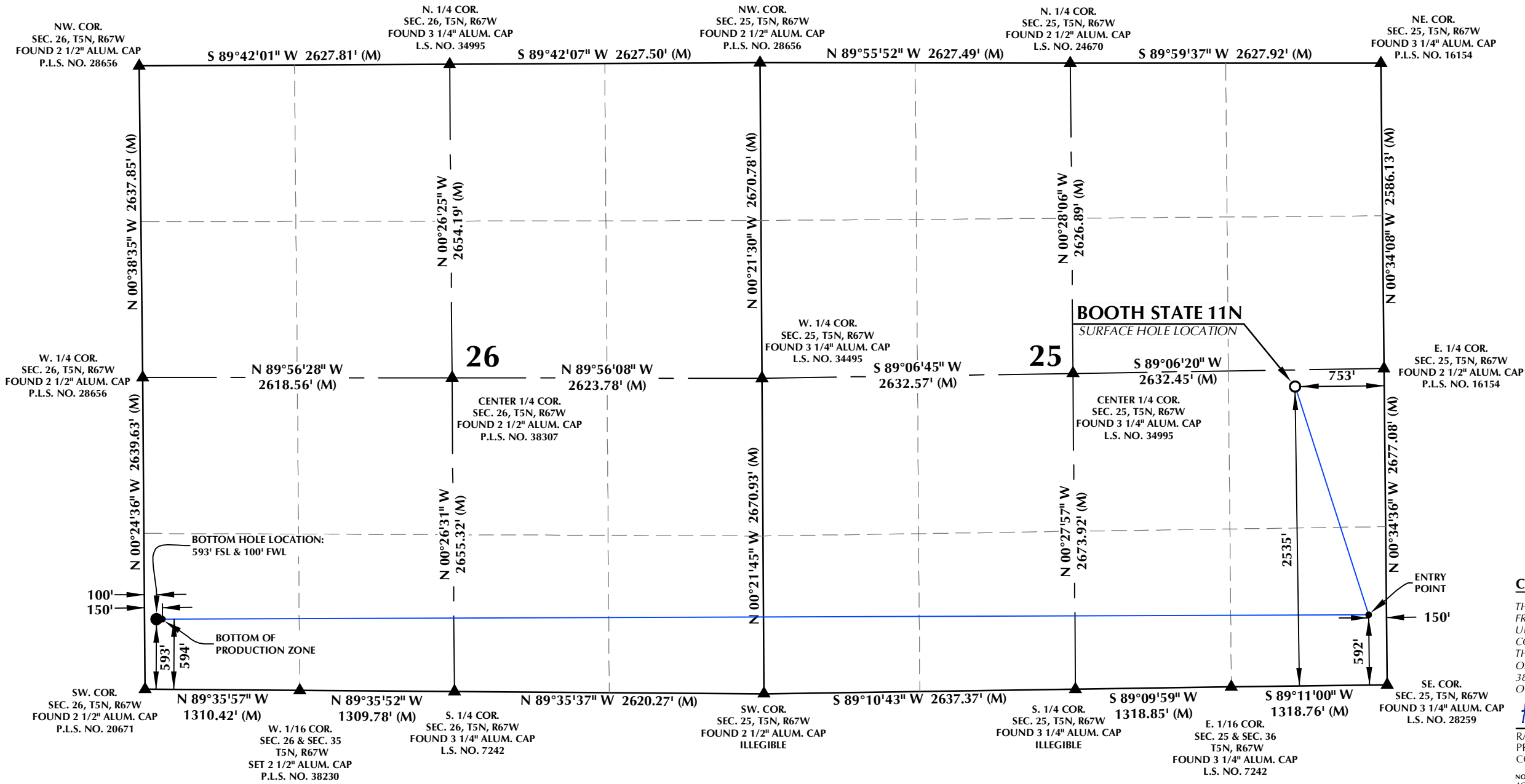


T5N, R67W



SURFACE HOLE LOCATION: NAD 83
GROUND ELEVATION= 4979.6'
LATITUDE= 40.370270°
LONGITUDE= -104.834774°
ENTRY POINT: NAD 83
LATITUDE= 40.364948°
LONGITUDE= -104.832592°
BOTTOM OF PRODUCTION ZONE: NAD 83
LATITUDE= 40.365053°
LONGITUDE= -104.869243°
BOTTOM HOLE LOCATION: NAD 83
LATITUDE= 40.365053°
LONGITUDE= -104.869422°

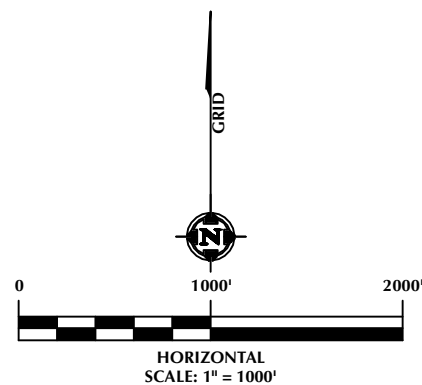
CERTIFICATE OF SURVEYOR:

THIS IS TO CERTIFY THAT THE ABOVE PLAN WAS PREPARED FROM FIELD NOTES OF ACTUAL SURVEY MADE BY ME OR UNDER MY SUPERVISION AND TO THE BEST OF MY KNOWLEDGE AND BELIEF THIS CERTIFICATE DOES NOT REPRESENT A LAND SURVEY THAT OR IMPROVEMENT SURVEY PLAN AS DEFINED BY C.S. 38-51-102 AND CANNOT BE RELIED UPON TO DETERMINE OWNERSHIP.

Randall K. French
4/26/24
RANDALL K. FRENCH
PROFESSIONAL LAND SURVEYOR
COLORADO REGISTRATION NUMBER 38512

NOTICE: ACCORDING TO COLORADO STATE LAW YOU MAY COMMENCE A LEGAL ACTION BASED UPON ANY DEFECT IN THIS SURVEY WITHIN THREE YEARS OF THE DATE YOU FIRST DISCOVER SUCH DEFECT. IN NO EVENT MAY ANY ACTION BASED UPON ANY DEFECT IN THIS SURVEY BE COMMENCED MORE THAN TEN YEARS FROM THE DATE ON THE CERTIFICATION SHOWN HEREON.

- NOTES:**
- ▲ INDICATES SECTION CORNER.
 - INDICATES CALCULATED CORNER.
 - ELEVATION BASED ON NAVD88 (GEOID12B).
 - BASIS OF BEARINGS DERIVED FROM COLORADO COORDINATE SYSTEM OF 1983, NORTH ZONE.
 - ALL MEASURED DISTANCES ARE GRID. COMBINED SCALE FACTOR: .99972391 CALCULATED FROM THE E. 1/4 CORNER OF SECTION 25, T5N, R67W.
 - OPERATOR: JEREMY GROVES/ PDOP = 1.7
 - WELL FOOTAGES ARE MEASURED AT RIGHT ANGLES TO THE SECTION LINES.



609 CONSULTING, LLC

LOVELAND OFFICE
 6706 North Franklin Avenue
 Loveland, Colorado 80538
 Phone 970-776-4331

SHERIDAN OFFICE
 1095 Saberton Avenue
 Sheridan, Wyoming 82801
 Phone 307-674-0609

Chevron

PDC ENERGY
 1099 18th Street
 Granite Tower, Suite 1500
 Denver, Colorado 80202

On August 7, 2023, Chevron acquired PDC Energy, Inc. ("PDC"). PDC is continuing to operate as a wholly owned subsidiary of Chevron.

WELL PAD - BOOTH STATE 5N67W25 1-12

BOOTH STATE 11N
WELL LOCATION CERTIFICATE
2535' FSL & 753' FEL (NESE) (SURFACE HOLE LOCATION)
592' FSL & 150' FEL (SESE) (ENTRY POINT)
LOCATED IN SECTION 25
594' FSL & 150' FWL (SWSW) (BOTTOM OF PRODUCTION ZONE)
593' FSL & 100' FWL (SWSW) (BOTTOM HOLE LOCATION)
LOCATED IN SECTION 26
T5N, R67W, 6TH P.M.
WELD COUNTY, COLORADO

DRAFTED BY:	SJM	CHECKED BY:	RKF
DATE DRAFTED:	4/26/24	DATE SURVEYED:	6/16/21
REVISED:		FILE NAME:	18-25