

PDC ENERGY INC

Location: COLORADO Slot: SLOT#03 BOOTH STATE 03NA (2655'FSL & 752'FEL,SEC.25)

Field: WELD COUNTY (NAD83/GRID) Well: BOOTH STATE 03NA

Facility: SEC.25-T05N-R67W Wellbore: BOOTH STATE 03NA PWB

Plot reference wellpath is BOOTH STATE 03NA (REV-A.0) PWB

Grid System: NAD83 / Lambert Colorado SP, Northern Zone (501), US feet
 True vertical depths are referenced to (4984'GL+30'KB@5014'RKB) (RKB)
 Reference wellpath measured depths are referenced to (4984'GL+30'KB@5014'RKB) (RKB)
 (4984'GL+30'KB@5014'RKB) (RKB) to Mean Sea Level: 501.4 feet
 Mean Sea Level to Ground level (At Slot: SLOT#03 BOOTH STATE 03NA (2655'FSL & 752'FEL,SEC.25)): 0 feet
 Offset wellpath MDs are referenced to each path's default MD datum
 North Reference: Grid north
 Scale: True distance
 Coordinates are in feet referenced to Slot
 Depths are in feet
 Created by: guesaler on 2024-05-26; Database: WA_Denver

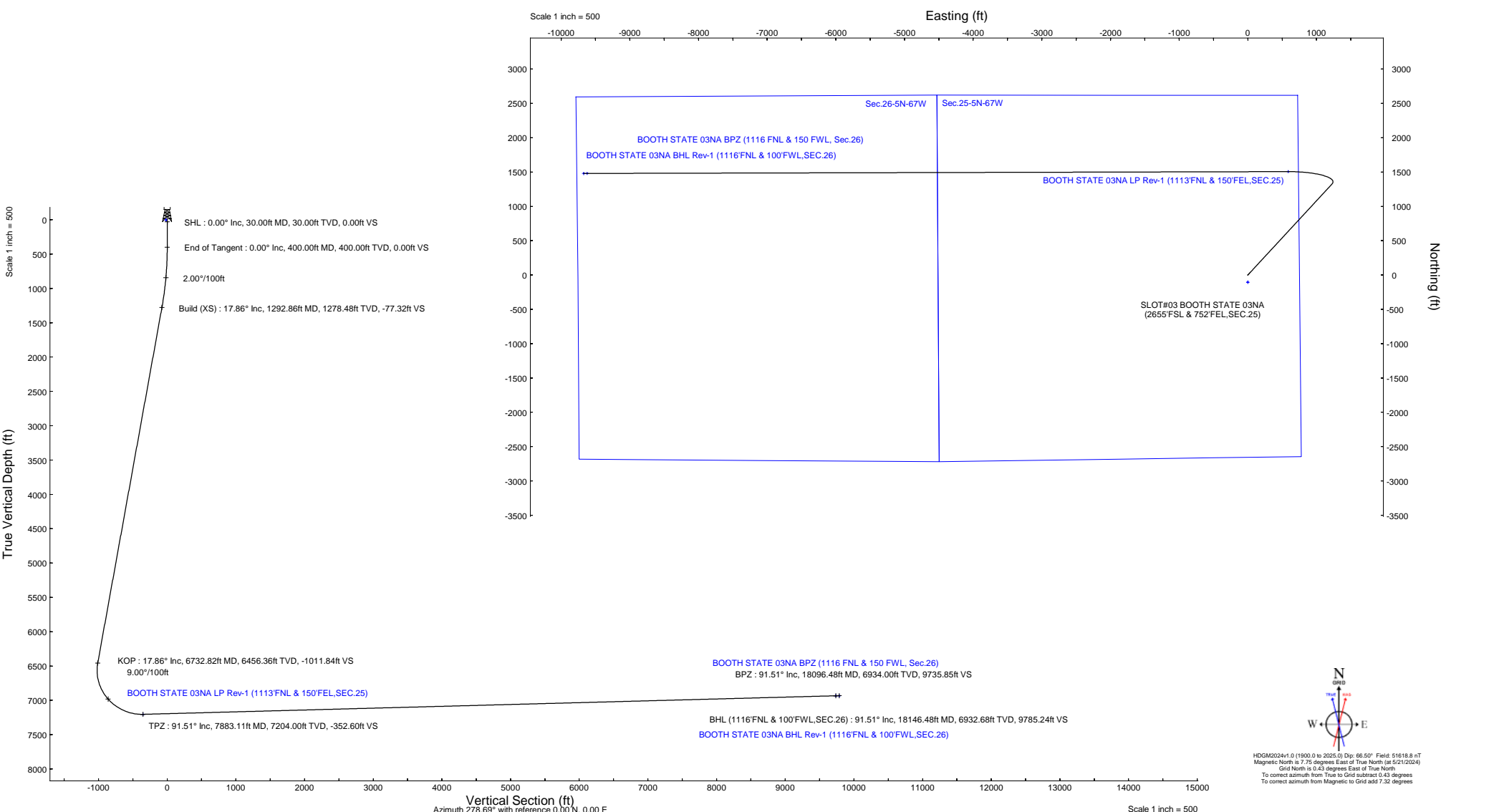
Location Information

Facility Name	Grid East (US ft)	Grid North (US ft)	Latitude	Longitude		
SEC.25-T05N-R67W	3185351.829	1378575.217	49°22'14.4552"N	104°50'5.1828"W		
Slot	Local N (ft)	Local E (ft)	Grid East (US ft)	Grid North (US ft)	Latitude	Longitude
SLOT#03 BOOTH STATE 03NA (2655'FSL & 752'FEL,SEC.25)	-29.87	0.22	3185352.063	1378545.346	49°22'14.1600"N	104°50'5.1720"W
(4984'GL+30'KB@5014'RKB) (RKB) to Ground level (At Slot: SLOT#03 BOOTH STATE 03NA (2655'FSL & 752'FEL,SEC.25))						501.4ft
Mean Sea Level to Ground level (At Slot: SLOT#03 BOOTH STATE 03NA (2655'FSL & 752'FEL,SEC.25))						0ft
(4984'GL+30'KB@5014'RKB) (RKB) to Mean Sea Level						501.4ft

		Targets							
Name	MD (ft)	TVD (ft)	Local N (ft)	Local E (ft)	Grid East (US ft)	Grid North (US ft)	Latitude	Longitude	
Sec.25-5N-67W	N/A	4.00	-105.29	-0.05	3185352.01	1378440.06	40°22'13.1196"N	104°50'5.1828"W	
Sec.26-5N-67W	N/A	4.00	-105.29	-0.05	3185352.01	1378440.06	40°22'13.1196"N	104°50'5.1828"W	
BOOTH STATE 03NA BHL Rev-1 (1116'FNL & 100'FWL,SEC.26)	N/A	6934.00	1478.78	-9672.71	3175079.76	1380024.06	40°22'29.4708"N	104°52'10.0020"W	
BOOTH STATE 03NA BPZ (1116'FNL & 150'FWL, SEC.26)	18096.48	6934.00	1479.13	-9622.84	3175729.63	1380024.42	40°22'29.4708"N	104°52'9.3576"W	
BOOTH STATE 03NA LP Rev-1 (1113'FNL & 150'FEL,SEC.25)	7883.11	7204.00	1505.78	586.93	3185938.96	1380051.06	40°22'28.9956"N	104°49'57.4428"W	

Well Profile Data

Design Comment	MD (ft)	Inc (°)	Az (°)	TVD (ft)	Local N (ft)	Local E (ft)	DLS (*/100ft)	VS (ft)
SHL	30.00	0.00	42.764	30.00	0.00	0.00	0.00	0.00
End of Tangent	400.00	0.00	42.764	400.00	0.00	0.00	0.00	0.00
Build (XS)	1292.86	17.857	42.764	1278.48	101.32	93.71	2.00	-77.32
KOP	6732.82	17.857	42.764	6456.36	1326.00	1226.35	0.00	-1011.84
TPZ	7883.11	91.515	269.850	7204.00	1505.78	586.93	9.00	-352.60
BPZ	18096.48	91.515	269.850	6934.00	1479.13	-9622.84	0.00	9735.85
BHL (1116'FNL & 100'FWL,SEC.26)	18146.48	91.515	269.850	6932.68	1479.00	-9672.82	0.00	9785.24





Planned Wellpath Report

BOOTH STATE 03NA (REV-A.0) PWP
Page 1 of 8



REFERENCE WELLPATH IDENTIFICATION

Operator	PDC ENERGY INC	Well	BOOTH STATE 03NA
Field	WELD COUNTY (NAD83/GRID)	API/Legal	
Facility	SEC.25-T05N-R67W	Wellbore	BOOTH STATE 03NA PWB
Slot	SLOT#03 BOOTH STATE 03NA (2655'FSL & 752'FEL,SEC.25)		

REPORT SETUP INFORMATION

Projection System	NAD83 / Lambert Colorado SP, Northern Zone (501), US feet	Software System	WellArchitect® 6.0
North Reference	Grid	User	Guenaler
Scale	0.999959	Report Generated	5/25/2024 at 9:21:25 PM
Convergence at slot	0.43° East	Database	WA_Denver

WELLPATH LOCATION

	Local coordinates		Grid coordinates		Geographic coordinates	
	North[ft]	East[ft]	Easting[US ft]	Northing[US ft]	Latitude	Longitude
Slot Location	-29.87	0.22	3185352.05	1378545.35	40.3706000°	-104.8347700°
Facility Reference Pt			3185351.83	1378575.22	40.3706820°	-104.8347700°
Field Reference Pt			3296400.32	1413291.61	40.4630000°	-104.4347500°

WELLPATH DATUM

Calculation method	Minimum curvature	(4984'GL+30'KB@5014'RKB) (RKB) to Facility Vertical Datum	5014.00ft
Horizontal Reference Pt	Slot	(4984'GL+30'KB@5014'RKB) (RKB) to Mean Sea Level	5014.00ft
Vertical Reference Pt	(4984'GL+30'KB@5014'RKB) (RKB)	(4984'GL+30'KB@5014'RKB) (RKB) to Ground Level at Slot (SLOT#03 BOOTH STATE 03NA (2655'FSL & 752'FEL,SEC.25))	5014.00ft
MD Reference Pt	(4984'GL+30'KB@5014'RKB) (RKB)	Section Origin	N 0.00, E 0.00 ft
Field Vertical Reference	Mean Sea Level	Section Azimuth	278.69°



Planned Wellpath Report

BOOTH STATE 03NA (REV-A.0) PWP
Page 2 of 8


REFERENCE WELLPATH IDENTIFICATION

Operator	PDC ENERGY INC	Well	BOOTH STATE 03NA
Field	WELD COUNTY (NAD83/GRID)	API/Legal	
Facility	SEC.25-T05N-R67W	Wellbore	BOOTH STATE 03NA PWB
Slot	SLOT#03 BOOTH STATE 03NA (2655'FSL & 752'FEL,SEC.25)		

WELLPATH DATA (199 stations) † = interpolated, ‡ = extrapolated station

MD [ft]	Inclination [°]	Azimuth [°]	TVD [ft]	Vert Sect [ft]	North [ft]	East [ft]	Latitude	Longitude	DLS [°/100ft]	Comments
0.00†	0.000	42.764	0.00	0.00	0.00	0.00	40.3706000	-104.8347700	0.00	
30.00	0.000	42.764	30.00	0.00	0.00	0.00	40.3706000	-104.8347700	0.00	SHL
130.00†	0.000	42.764	130.00	0.00	0.00	0.00	40.3706000	-104.8347700	0.00	
230.00†	0.000	42.764	230.00	0.00	0.00	0.00	40.3706000	-104.8347700	0.00	
330.00†	0.000	42.764	330.00	0.00	0.00	0.00	40.3706000	-104.8347700	0.00	
400.00	0.000	42.764	400.00	0.00	0.00	0.00	40.3706000	-104.8347700	0.00	End of Tangent
430.00†	0.600	42.764	430.00	-0.09	0.12	0.11	40.3706003	-104.8347696	2.00	
530.00†	2.600	42.764	529.96	-1.65	2.17	2.00	40.3706059	-104.8347628	2.00	
630.00†	4.600	42.764	629.75	-5.17	6.77	6.27	40.3706185	-104.8347473	2.00	
730.00†	6.600	42.764	729.27	-10.64	13.94	12.89	40.3706380	-104.8347234	2.00	
830.00†	8.600	42.764	828.39	-18.04	23.65	21.87	40.3706645	-104.8346909	2.00	
902.57†	10.051	42.764	900.00	-24.63	32.28	29.86	40.3706880	-104.8346620	2.00	PIERRE
930.00†	10.600	42.764	926.98	-27.39	35.89	33.19	40.3706978	-104.8346499	2.00	
1024.94†	12.499	42.764	1020.00	-38.04	49.85	46.10	40.3707359	-104.8346032	2.00	U PAWNEE
1024.00†	12.600	42.764	1024.93	-38.65	50.65	46.85	40.3707381	-104.8346005	2.00	
1130.00†	14.600	42.764	1122.13	-51.82	67.91	62.81	40.3707851	-104.8345428	2.00	
1230.00†	16.600	42.764	1218.44	-66.89	87.66	81.07	40.3708389	-104.8344767	2.00	
1292.86	17.857	42.764	1278.48	-77.32	101.32	93.71	40.3708762	-104.8344310	2.00	Build (XS)
1330.00†	17.857	42.764	1313.83	-83.70	109.69	101.44	40.3708990	-104.8344030	0.00	
1430.00†	17.857	42.764	1409.01	-100.88	132.20	122.26	40.3709603	-104.8343277	0.00	
1530.00†	17.857	42.764	1504.19	-118.06	154.71	143.08	40.3710217	-104.8342523	0.00	
1530.85†	17.857	42.764	1505.00	-118.20	154.90	143.26	40.3710222	-104.8342517	0.00	U PAWNEE BASE
1630.00†	17.857	42.764	1599.37	-135.24	177.22	163.91	40.3710831	-104.8341770	0.00	
1730.00†	17.857	42.764	1694.56	-152.41	199.74	184.73	40.3711444	-104.8341017	0.00	
1830.00†	17.857	42.764	1789.74	-169.59	222.25	205.55	40.3712058	-104.8340264	0.00	
1930.00†	17.857	42.764	1884.92	-186.77	244.76	226.37	40.3712672	-104.8339510	0.00	
2030.00†	17.857	42.764	1980.10	-203.95	267.27	247.19	40.3713285	-104.8338757	0.00	
2130.00†	17.857	42.764	2075.28	-221.13	289.79	268.01	40.3713899	-104.8338004	0.00	
2230.00†	17.857	42.764	2170.47	-238.31	312.30	288.83	40.3714513	-104.8337251	0.00	
2330.00†	17.857	42.764	2265.65	-255.49	334.81	309.65	40.3715126	-104.8336497	0.00	
2430.00†	17.857	42.764	2360.83	-272.67	357.32	330.47	40.3715740	-104.8335744	0.00	
2530.00†	17.857	42.764	2456.01	-289.85	379.84	351.29	40.3716353	-104.8334991	0.00	
2630.00†	17.857	42.764	2551.20	-307.02	402.35	372.11	40.3716967	-104.8334237	0.00	
2730.00†	17.857	42.764	2646.38	-324.20	424.86	392.93	40.3717581	-104.8333484	0.00	
2830.00†	17.857	42.764	2741.56	-341.38	447.37	413.75	40.3718194	-104.8332731	0.00	
2930.00†	17.857	42.764	2836.74	-358.56	469.89	434.58	40.3718808	-104.8331978	0.00	
3030.00†	17.857	42.764	2931.93	-375.74	492.40	455.40	40.3719422	-104.8331224	0.00	
3130.00†	17.857	42.764	3027.11	-392.92	514.91	476.22	40.3720035	-104.8330471	0.00	
3230.00†	17.857	42.764	3122.29	-410.10	537.42	497.04	40.3720649	-104.8329718	0.00	
3330.00†	17.857	42.764	3217.47	-427.28	559.94	517.86	40.3721263	-104.8328964	0.00	
3430.00†	17.857	42.764	3312.66	-444.46	582.45	538.68	40.3721876	-104.8328211	0.00	
3530.00†	17.857	42.764	3407.84	-461.63	604.96	559.50	40.3722490	-104.8327458	0.00	
3630.00†	17.857	42.764	3503.02	-478.81	627.47	580.32	40.3723103	-104.8326704	0.00	
3730.00†	17.857	42.764	3598.20	-495.99	649.99	601.14	40.3723717	-104.8325951	0.00	
3830.00†	17.857	42.764	3693.38	-513.17	672.50	621.96	40.3724331	-104.8325198	0.00	



Planned Wellpath Report

BOOTH STATE 03NA (REV-A.0) PWP
Page 3 of 8



REFERENCE WELLPATH IDENTIFICATION			
Operator	PDC ENERGY INC	Well	BOOTH STATE 03NA
Field	WELD COUNTY (NAD83/GRID)	API/Legal	
Facility	SEC.25-T05N-R67W	Wellbore	BOOTH STATE 03NA PWB
Slot	SLOT#03 BOOTH STATE 03NA (2655'FSL & 752'FEL,SEC.25)		

WELLPATH DATA (199 stations) † = interpolated, ‡ = extrapolated station										
MD [ft]	Inclination [°]	Azimuth [°]	TVD [ft]	Vert Sect [ft]	North [ft]	East [ft]	Latitude	Longitude	DLS [°/100ft]	Comments
3930.00†	17.857	42.764	3788.57	-530.35	695.01	642.78	40.3724944	-104.8324445	0.00	
3973.53†	17.857	42.764	3830.00	-537.83	704.81	651.85	40.3725211	-104.8324117	0.00	Parkman Sandstone
4030.00†	17.857	42.764	3883.75	-547.53	717.52	663.60	40.3725558	-104.8323691	0.00	
4130.00†	17.857	42.764	3978.93	-564.71	740.04	684.42	40.3726172	-104.8322938	0.00	
4230.00†	17.857	42.764	4074.11	-581.89	762.55	705.25	40.3726785	-104.8322185	0.00	
4330.00†	17.857	42.764	4169.30	-599.07	785.06	726.07	40.3727399	-104.8321431	0.00	
4430.00†	17.857	42.764	4264.48	-616.24	807.57	746.89	40.3728012	-104.8320678	0.00	
4516.70†	17.857	42.764	4347.00	-631.14	827.09	764.94	40.3728544	-104.8320025	0.00	Sussex Sandstone
4530.00†	17.857	42.764	4359.66	-633.42	830.09	767.71	40.3728626	-104.8319925	0.00	
4630.00†	17.857	42.764	4454.84	-650.60	852.60	788.53	40.3729240	-104.8319171	0.00	
4730.00†	17.857	42.764	4550.03	-667.78	875.11	809.35	40.3729853	-104.8318418	0.00	
4830.00†	17.857	42.764	4645.21	-684.96	897.63	830.17	40.3730467	-104.8317665	0.00	
4930.00†	17.857	42.764	4740.39	-702.14	920.14	850.99	40.3731081	-104.8316911	0.00	
5030.00†	17.857	42.764	4835.57	-719.32	942.65	871.81	40.3731694	-104.8316158	0.00	
5116.60†	17.857	42.764	4918.00	-734.19	962.15	889.84	40.3732226	-104.8315506	0.00	Shannon Sandstone
5130.00†	17.857	42.764	4930.76	-736.50	965.16	892.63	40.3732308	-104.8315405	0.00	
5230.00†	17.857	42.764	5025.94	-753.68	987.68	913.45	40.3732921	-104.8314651	0.00	
5330.00†	17.857	42.764	5121.12	-770.85	1010.19	934.27	40.3733535	-104.8313898	0.00	
5430.00†	17.857	42.764	5216.30	-788.03	1032.70	955.10	40.3734149	-104.8313145	0.00	
5530.00†	17.857	42.764	5311.48	-805.21	1055.21	975.92	40.3734762	-104.8312392	0.00	
5630.00†	17.857	42.764	5406.67	-822.39	1077.73	996.74	40.3735376	-104.8311638	0.00	
5730.00†	17.857	42.764	5501.85	-839.57	1100.24	1017.56	40.3735990	-104.8310885	0.00	
5830.00†	17.857	42.764	5597.03	-856.75	1122.75	1038.38	40.3736603	-104.8310132	0.00	
5930.00†	17.857	42.764	5692.21	-873.93	1145.26	1059.20	40.3737217	-104.8309378	0.00	
6030.00†	17.857	42.764	5787.40	-891.11	1167.78	1080.02	40.3737830	-104.8308625	0.00	
6130.00†	17.857	42.764	5882.58	-908.29	1190.29	1100.84	40.3738444	-104.8307872	0.00	
6230.00†	17.857	42.764	5977.76	-925.46	1212.80	1121.66	40.3739058	-104.8307118	0.00	
6330.00†	17.857	42.764	6072.94	-942.64	1235.31	1142.48	40.3739671	-104.8306365	0.00	
6430.00†	17.857	42.764	6168.13	-959.82	1257.83	1163.30	40.3740285	-104.8305612	0.00	
6530.00†	17.857	42.764	6263.31	-977.00	1280.34	1184.12	40.3740899	-104.8304858	0.00	
6630.00†	17.857	42.764	6358.49	-994.18	1302.85	1204.94	40.3741512	-104.8304105	0.00	
6730.00†	17.857	42.764	6453.67	-1011.36	1325.36	1225.77	40.3742126	-104.8303352	0.00	
6732.82	17.857	42.764	6456.36	-1011.84	1326.00	1226.35	40.3742143	-104.8303330	0.00	KOP
6830.00†	13.727	13.915	6549.99	-1021.26	1348.17	1239.27	40.3742749	-104.8302861	9.00	
6930.00†	14.526	336.549	6647.16	-1015.65	1371.24	1237.13	40.3743383	-104.8302931	9.00	
7030.00†	19.815	311.408	6742.80	-994.68	1394.00	1219.39	40.3744011	-104.8303562	9.00	
7130.00†	27.078	297.869	6834.55	-958.85	1415.90	1186.49	40.3744619	-104.8304737	9.00	
7230.00†	35.109	289.939	6920.15	-909.04	1436.39	1139.24	40.3745191	-104.8306427	9.00	
7330.00†	43.482	284.702	6997.49	-846.49	1454.96	1078.80	40.3745714	-104.8308591	9.00	
7430.00†	52.030	280.884	7064.67	-772.74	1471.17	1006.66	40.3746173	-104.8311175	9.00	
7511.99†	59.113	278.371	7111.00	-705.17	1482.41	940.03	40.3746496	-104.8313564	9.00	Sharon Springs
7530.00†	60.675	277.871	7120.03	-689.59	1484.61	924.60	40.3746559	-104.8314117	9.00	
7585.14†	65.468	276.428	7145.00	-640.46	1490.71	875.84	40.3746737	-104.8315865	9.00	Niobrara A
7630.00†	69.377	275.334	7162.22	-599.10	1494.95	834.64	40.3746862	-104.8317343	9.00	
7730.00†	78.112	273.074	7190.19	-503.49	1501.94	739.00	40.3747073	-104.8320773	9.00	



Planned Wellpath Report

BOOTH STATE 03NA (REV-A.0) PWP
Page 4 of 8



REFERENCE WELLPATH IDENTIFICATION			
Operator	PDC ENERGY INC	Well	BOOTH STATE 03NA
Field	WELD COUNTY (NAD83/GRID)	API/Legal	
Facility	SEC.25-T05N-R67W	Wellbore	BOOTH STATE 03NA PWB
Slot	SLOT#03 BOOTH STATE 03NA (2655'FSL & 752'FEL,SEC.25)		

WELLPATH DATA (199 stations) † = interpolated, ‡ = extrapolated station										
MD [ft]	Inclination [°]	Azimuth [°]	TVD [ft]	Vert Sect [ft]	North [ft]	East [ft]	Latitude	Longitude	DLS [°/100ft]	Comments
7830.00†	86.864	270.955	7203.25	-405.13	1505.40	640.02	40.3747189	-104.8324325	9.00	
7883.11	91.515	269.850	7204.00†	-352.60	1505.78	586.93	40.3747210	-104.8326230	9.00	TPZ
7930.00†	91.515	269.850	7202.76	-306.28	1505.65	540.06	40.3747216	-104.8327912	0.00	
8030.00†	91.515	269.850	7200.12	-207.50	1505.39	440.09	40.3747230	-104.8331500	0.00	
8130.00†	91.515	269.850	7197.47	-108.72	1505.13	340.13	40.3747243	-104.8335088	0.00	
8230.00†	91.515	269.850	7194.83	-9.95	1504.87	240.16	40.3747257	-104.8338676	0.00	
8330.00†	91.515	269.850	7192.19	88.83	1504.61	140.20	40.3747270	-104.8342263	0.00	
8430.00†	91.515	269.850	7189.54	187.61	1504.35	40.23	40.3747284	-104.8345851	0.00	
8530.00†	91.515	269.850	7186.90	286.38	1504.09	-59.73	40.3747297	-104.8349439	0.00	
8630.00†	91.515	269.850	7184.26	385.16	1503.83	-159.70	40.3747310	-104.8353027	0.00	
8730.00†	91.515	269.850	7181.61	483.94	1503.57	-259.66	40.3747324	-104.8356614	0.00	
8830.00†	91.515	269.850	7178.97	582.71	1503.31	-359.63	40.3747337	-104.8360202	0.00	
8930.00†	91.515	269.850	7176.32	681.49	1503.05	-459.59	40.3747351	-104.8363790	0.00	
9030.00†	91.515	269.850	7173.68	780.27	1502.78	-559.56	40.3747364	-104.8367377	0.00	
9130.00†	91.515	269.850	7171.04	879.04	1502.52	-659.52	40.3747377	-104.8370965	0.00	
9230.00†	91.515	269.850	7168.39	977.82	1502.26	-759.49	40.3747391	-104.8374553	0.00	
9330.00†	91.515	269.850	7165.75	1076.60	1502.00	-859.45	40.3747404	-104.8378141	0.00	
9430.00†	91.515	269.850	7163.11	1175.38	1501.74	-959.41	40.3747417	-104.8381728	0.00	
9530.00†	91.515	269.850	7160.46	1274.15	1501.48	-1059.38	40.3747431	-104.8385316	0.00	
9630.00†	91.515	269.850	7157.82	1372.93	1501.22	-1159.34	40.3747444	-104.8388904	0.00	
9730.00†	91.515	269.850	7155.18	1471.71	1500.96	-1259.31	40.3747457	-104.8392492	0.00	
9830.00†	91.515	269.850	7152.53	1570.48	1500.70	-1359.27	40.3747471	-104.8396079	0.00	
9930.00†	91.515	269.850	7149.89	1669.26	1500.44	-1459.24	40.3747484	-104.8399667	0.00	
10030.00†	91.515	269.850	7147.24	1768.04	1500.18	-1559.20	40.3747497	-104.8403255	0.00	
10114.92†	91.515	269.850	7145.00	1851.92	1499.95	-1644.09	40.3747508	-104.8406302	0.00	Niobrara A
10130.00†	91.515	269.850	7144.60	1866.81	1499.91	-1659.17	40.3747510	-104.8406843	0.00	
10230.00†	91.515	269.850	7141.96	1965.59	1499.65	-1759.13	40.3747524	-104.8410430	0.00	
10330.00†	91.515	269.850	7139.31	2064.37	1499.39	-1859.10	40.3747537	-104.8414018	0.00	
10430.00†	91.515	269.850	7136.67	2163.14	1499.13	-1959.06	40.3747550	-104.8417606	0.00	
10530.00†	91.515	269.850	7134.03	2261.92	1498.87	-2059.03	40.3747563	-104.8421194	0.00	
10630.00†	91.515	269.850	7131.38	2360.70	1498.61	-2158.99	40.3747576	-104.8424781	0.00	
10730.00†	91.515	269.850	7128.74	2459.47	1498.35	-2258.96	40.3747590	-104.8428369	0.00	
10830.00†	91.515	269.850	7126.10	2558.25	1498.09	-2358.92	40.3747603	-104.8431957	0.00	
10930.00†	91.515	269.850	7123.45	2657.03	1497.83	-2458.89	40.3747616	-104.8435545	0.00	
11030.00†	91.515	269.850	7120.81	2755.80	1497.57	-2558.85	40.3747629	-104.8439132	0.00	
11130.00†	91.515	269.850	7118.17	2854.58	1497.31	-2658.81	40.3747642	-104.8442720	0.00	
11230.00†	91.515	269.850	7115.52	2953.36	1497.05	-2758.78	40.3747655	-104.8446308	0.00	
11330.00†	91.515	269.850	7112.88	3052.13	1496.78	-2858.74	40.3747668	-104.8449896	0.00	
11401.05†	91.515	269.850	7111.00	3122.31	1496.60	-2929.77	40.3747678	-104.8452445	0.00	Sharon Springs
11430.00†	91.515	269.850	7110.23	3150.91	1496.52	-2958.71	40.3747682	-104.8453483	0.00	
11530.00†	91.515	269.850	7107.59	3249.69	1496.26	-3058.67	40.3747695	-104.8457071	0.00	
11630.00†	91.515	269.850	7104.95	3348.47	1496.00	-3158.64	40.3747708	-104.8460659	0.00	
11730.00†	91.515	269.850	7102.30	3447.24	1495.74	-3258.60	40.3747721	-104.8464247	0.00	
11830.00†	91.515	269.850	7099.66	3546.02	1495.48	-3358.57	40.3747734	-104.8467834	0.00	
11930.00†	91.515	269.850	7097.02	3644.80	1495.22	-3458.53	40.3747747	-104.8471422	0.00	



Planned Wellpath Report

BOOTH STATE 03NA (REV-A.0) PWP
Page 5 of 8



REFERENCE WELLPATH IDENTIFICATION			
Operator	PDC ENERGY INC	Well	BOOTH STATE 03NA
Field	WELD COUNTY (NAD83/GRID)	API/Legal	
Facility	SEC.25-T05N-R67W	Wellbore	BOOTH STATE 03NA PWB
Slot	SLOT#03 BOOTH STATE 03NA (2655'FSL & 752'FEL,SEC.25)		

WELLPATH DATA (199 stations) † = interpolated, ‡ = extrapolated station										
MD [ft]	Inclination [°]	Azimuth [°]	TVD [ft]	Vert Sect [ft]	North [ft]	East [ft]	Latitude	Longitude	DLS [°/100ft]	Comments
12030.00†	91.515	269.850	7094.37	3743.57	1494.96	-3558.50	40.3747760	-104.8475010	0.00	
12130.00†	91.515	269.850	7091.73	3842.35	1494.70	-3658.46	40.3747773	-104.8478598	0.00	
12230.00†	91.515	269.850	7089.09	3941.13	1494.44	-3758.43	40.3747786	-104.8482185	0.00	
12330.00†	91.515	269.850	7086.44	4039.90	1494.18	-3858.39	40.3747799	-104.8485773	0.00	
12430.00†	91.515	269.850	7083.80	4138.68	1493.92	-3958.36	40.3747812	-104.8489361	0.00	
12530.00†	91.515	269.850	7081.16	4237.46	1493.65	-4058.32	40.3747825	-104.8492949	0.00	
12630.00†	91.515	269.850	7078.51	4336.23	1493.39	-4158.29	40.3747838	-104.8496536	0.00	
12730.00†	91.515	269.850	7075.87	4435.01	1493.13	-4258.25	40.3747851	-104.8500124	0.00	
12830.00†	91.515	269.850	7073.22	4533.79	1492.87	-4358.21	40.3747864	-104.8503712	0.00	
12930.00†	91.515	269.850	7070.58	4632.56	1492.61	-4458.18	40.3747877	-104.8507300	0.00	
13030.00†	91.515	269.850	7067.94	4731.34	1492.35	-4558.14	40.3747890	-104.8510887	0.00	
13130.00†	91.515	269.850	7065.29	4830.12	1492.09	-4658.11	40.3747903	-104.8514475	0.00	
13230.00†	91.515	269.850	7062.65	4928.89	1491.83	-4758.07	40.3747915	-104.8518063	0.00	
13330.00†	91.515	269.850	7060.01	5027.67	1491.57	-4858.04	40.3747928	-104.8521651	0.00	
13430.00†	91.515	269.850	7057.36	5126.45	1491.31	-4958.00	40.3747941	-104.8525238	0.00	
13530.00†	91.515	269.850	7054.72	5225.23	1491.05	-5057.97	40.3747954	-104.8528826	0.00	
13630.00†	91.515	269.850	7052.08	5324.00	1490.79	-5157.93	40.3747967	-104.8532414	0.00	
13730.00†	91.515	269.850	7049.43	5422.78	1490.52	-5257.90	40.3747980	-104.8536002	0.00	
13830.00†	91.515	269.850	7046.79	5521.56	1490.26	-5357.86	40.3747993	-104.8539589	0.00	
13930.00†	91.515	269.850	7044.14	5620.33	1490.00	-5457.83	40.3748005	-104.8543177	0.00	
14030.00†	91.515	269.850	7041.50	5719.11	1489.74	-5557.79	40.3748018	-104.8546765	0.00	
14130.00†	91.515	269.850	7038.86	5817.89	1489.48	-5657.76	40.3748031	-104.8550353	0.00	
14230.00†	91.515	269.850	7036.21	5916.66	1489.22	-5757.72	40.3748044	-104.8553940	0.00	
14330.00†	91.515	269.850	7033.57	6015.44	1488.96	-5857.69	40.3748057	-104.8557528	0.00	
14430.00†	91.515	269.850	7030.93	6114.22	1488.70	-5957.65	40.3748069	-104.8561116	0.00	
14530.00†	91.515	269.850	7028.28	6212.99	1488.44	-6057.61	40.3748082	-104.8564704	0.00	
14630.00†	91.515	269.850	7025.64	6311.77	1488.18	-6157.58	40.3748095	-104.8568291	0.00	
14730.00†	91.515	269.850	7023.00	6410.55	1487.92	-6257.54	40.3748108	-104.8571879	0.00	
14830.00†	91.515	269.850	7020.35	6509.32	1487.65	-6357.51	40.3748120	-104.8575467	0.00	
14930.00†	91.515	269.850	7017.71	6608.10	1487.39	-6457.47	40.3748133	-104.8579055	0.00	
15030.00†	91.515	269.850	7015.07	6706.88	1487.13	-6557.44	40.3748146	-104.8582642	0.00	
15130.00†	91.515	269.850	7012.42	6805.65	1486.87	-6657.40	40.3748159	-104.8586230	0.00	
15230.00†	91.515	269.850	7009.78	6904.43	1486.61	-6757.37	40.3748171	-104.8589818	0.00	
15330.00†	91.515	269.850	7007.13	7003.21	1486.35	-6857.33	40.3748184	-104.8593406	0.00	
15430.00†	91.515	269.850	7004.49	7101.98	1486.09	-6957.30	40.3748197	-104.8596993	0.00	
15530.00†	91.515	269.850	7001.85	7200.76	1485.83	-7057.26	40.3748209	-104.8600581	0.00	
15630.00†	91.515	269.850	6999.20	7299.54	1485.57	-7157.23	40.3748222	-104.8604169	0.00	
15730.00†	91.515	269.850	6996.56	7398.32	1485.31	-7257.19	40.3748234	-104.8607757	0.00	
15830.00†	91.515	269.850	6993.92	7497.09	1485.05	-7357.16	40.3748247	-104.8611344	0.00	
15930.00†	91.515	269.850	6991.27	7595.87	1484.79	-7457.12	40.3748260	-104.8614932	0.00	
16030.00†	91.515	269.850	6988.63	7694.65	1484.52	-7557.09	40.3748272	-104.8618520	0.00	
16130.00†	91.515	269.850	6985.99	7793.42	1484.26	-7657.05	40.3748285	-104.8622108	0.00	
16230.00†	91.515	269.850	6983.34	7892.20	1484.00	-7757.01	40.3748297	-104.8625695	0.00	
16330.00†	91.515	269.850	6980.70	7990.98	1483.74	-7856.98	40.3748310	-104.8629283	0.00	
16430.00†	91.515	269.850	6978.05	8089.75	1483.48	-7956.94	40.3748323	-104.8632871	0.00	



Planned Wellpath Report

BOOTH STATE 03NA (REV-A.0) PWP
Page 6 of 8



REFERENCE WELLPATH IDENTIFICATION			
Operator	PDC ENERGY INC	Well	BOOTH STATE 03NA
Field	WELD COUNTY (NAD83/GRID)	API/Legal	
Facility	SEC.25-T05N-R67W	Wellbore	BOOTH STATE 03NA PWB
Slot	SLOT#03 BOOTH STATE 03NA (2655'FSL & 752'FEL,SEC.25)		

WELLPATH DATA (199 stations) † = interpolated, ‡ = extrapolated station										
MD [ft]	Inclination [°]	Azimuth [°]	TVD [ft]	Vert Sect [ft]	North [ft]	East [ft]	Latitude	Longitude	DLS [°/100ft]	Comments
16530.00†	91.515	269.850	6975.41	8188.53	1483.22	-8056.91	40.3748335	-104.8636459	0.00	
16630.00†	91.515	269.850	6972.77	8287.31	1482.96	-8156.87	40.3748348	-104.8640046	0.00	
16730.00†	91.515	269.850	6970.12	8386.08	1482.70	-8256.84	40.3748360	-104.8643634	0.00	
16830.00†	91.515	269.850	6967.48	8484.86	1482.44	-8356.80	40.3748373	-104.8647222	0.00	
16930.00†	91.515	269.850	6964.84	8583.64	1482.18	-8456.77	40.3748385	-104.8650810	0.00	
17030.00†	91.515	269.850	6962.19	8682.41	1481.92	-8556.73	40.3748398	-104.8654397	0.00	
17130.00†	91.515	269.850	6959.55	8781.19	1481.66	-8656.70	40.3748410	-104.8657985	0.00	
17230.00†	91.515	269.850	6956.91	8879.97	1481.39	-8756.66	40.3748423	-104.8661573	0.00	
17330.00†	91.515	269.850	6954.26	8978.74	1481.13	-8856.63	40.3748435	-104.8665161	0.00	
17430.00†	91.515	269.850	6951.62	9077.52	1480.87	-8956.59	40.3748447	-104.8668748	0.00	
17530.00†	91.515	269.850	6948.98	9176.30	1480.61	-9056.56	40.3748460	-104.8672336	0.00	
17630.00†	91.515	269.850	6946.33	9275.07	1480.35	-9156.52	40.3748472	-104.8675924	0.00	
17730.00†	91.515	269.850	6943.69	9373.85	1480.09	-9256.49	40.3748485	-104.8679512	0.00	
17830.00†	91.515	269.850	6941.04	9472.63	1479.83	-9356.45	40.3748497	-104.8683099	0.00	
17930.00†	91.515	269.850	6938.40	9571.41	1479.57	-9456.42	40.3748509	-104.8686687	0.00	
18030.00†	91.515	269.850	6935.76	9670.18	1479.31	-9556.38	40.3748522	-104.8690275	0.00	
18096.48	91.515	269.850	6934.00‡	9735.85	1479.13	-9622.84	40.3748530	-104.8692660	0.00	BPZ
18130.00†	91.515	269.850	6933.11	9768.96	1479.05	-9656.34	40.3748534	-104.8693863	0.00	
18146.48	91.515	269.850	6932.68	9785.24	1479.00	-9672.82	40.3748536	-104.8694454	0.00	BHL (1116'FNL & 100'FWL,SEC.26)

TARGETS									
Name	MD [ft]	TVD [ft]	North [ft]	East [ft]	Grid East [US ft]	Grid North [US ft]	Latitude	Longitude	Shape
Sec.25-5N-67W	N/A	4.00	-105.29	-0.05	3185352.01	1378440.06	40.3703110	-104.8347730	polygon
	2D Polygon: dimensions not calculated								
Sec.26-5N-67W	N/A	4.00	-105.29	-0.05	3185352.01	1378440.06	40.3703110	-104.8347730	polygon
	2D Polygon: dimensions not calculated								
BOOTH STATE 03NA BHL Rev-1 (1116'FNL & 100'FWL,SEC.26)	N/A	6934.00	1478.78	-9672.71	3175679.76	1380024.06	40.3748530	-104.8694450	point
2) BOOTH STATE 03NA BPZ (1116 FNL & 150 FWL, Sec.26)	18096.48	6934.00	1479.13	-9622.84	3175729.63	1380024.42	40.3748530	-104.8692660	point
1) BOOTH STATE 03NA LP Rev-1 (1113'FNL & 150'FEL,SEC.25)	7883.11	7204.00	1505.78	586.93	3185938.96	1380051.06	40.3747210	-104.8326230	point



Planned Wellpath Report
 BOOTH STATE 03NA (REV-A.0) PWP
 Page 7 of 8



REFERENCE WELLPATH IDENTIFICATION			
Operator	PDC ENERGY INC	Well	BOOTH STATE 03NA
Field	WELD COUNTY (NAD83/GRID)	API/Legal	
Facility	SEC.25-T05N-R67W	Wellbore	BOOTH STATE 03NA PWB
Slot	SLOT#03 BOOTH STATE 03NA (2655'FSL & 752'FEL,SEC.25)		

SURVEY PROGRAM - Ref Wellbore: BOOTH STATE 03NA PWB Ref Wellpath: BOOTH STATE 03NA (REV-A.0) PWP				
Start MD [ft]	End MD [ft]	Positional Uncertainty Model	Log Name/Comment	Wellbore
30.00	2000.00	OWSG MWD rev2 - Standard		BOOTH STATE 03NA PWB
2000.00	18146.48	OWSG MWD rev2 (MS+IFR1)		BOOTH STATE 03NA PWB



Planned Wellpath Report

BOOTH STATE 03NA (REV-A.0) PWP
Page 8 of 8



REFERENCE WELLPATH IDENTIFICATION			
Operator	PDC ENERGY INC	Well	BOOTH STATE 03NA
Field	WELD COUNTY (NAD83/GRID)	API/Legal	
Facility	SEC.25-T05N-R67W	Wellbore	BOOTH STATE 03NA PWB
Slot	SLOT#03 BOOTH STATE 03NA (2655'FSL & 752'FEL,SEC.25)		

WELLPATH COMMENTS				
MD [ft]	Inclination [°]	Azimuth [°]	TVD [ft]	Comment
902.57	10.051	42.764	900.00	PIERRE
1024.94	12.499	42.764	1020.00	U PAWNEE
1530.85	17.857	42.764	1505.00	U PAWNEE BASE
3973.53	17.857	42.764	3830.00	Parkman Sandstone
4516.70	17.857	42.764	4347.00	Sussex Sandstone
5116.60	17.857	42.764	4918.00	Shannon Sandstone
7511.99	59.113	278.371	7111.00	Sharon Springs
7585.14	65.468	276.428	7145.00	Niobrara A
10114.92	91.515	269.850	7145.00	Niobrara A
11401.05	91.515	269.850	7111.00	Sharon Springs

DESIGN COMMENTS				
MD [ft]	Inclination [°]	Azimuth [°]	TVD [ft]	Comment
30.00	0.000	42.764	30.00	SHL
400.00	0.000	42.764	400.00	End of Tangent
1292.86	17.857	42.764	1278.48	Build (XS)
6732.82	17.857	42.764	6456.36	KOP
7883.11	91.515	269.850	7204.00	TPZ
18096.48	91.515	269.850	6934.00	BPZ
18146.48	91.515	269.850	6932.68	BHL (1116'FNL & 100'FWL,SEC.26)



Closest Approach Clearance Summary Report

BOOTH STATE 03NA (REV-A.0) PWP - SPE WPTS Stop Drilling HSE Risk (2017)
Page 1 of 5



REFERENCE WELLPATH IDENTIFICATION			
Operator	PDC ENERGY INC	Well	BOOTH STATE 03NA
Field	WELD COUNTY (NAD83/GRID)	API/Legal	
Facility	SEC.25-T05N-R67W	Wellbore	BOOTH STATE 03NA PWB
Slot	SLOT#03 BOOTH STATE 03NA (2655'FSL & 752'FEL,SEC.25)		

REPORT SETUP INFORMATION			
Projection System	NAD83 / Lambert Colorado SP, Northern Zone (501), US feet	Software System	WellArchitect® 6.0
North Reference	Grid	User	Guenaler
Scale	0.999959	Report Generated	5/25/2024 at 9:42:45 PM
Convergence at slot	0.43° East	Database	WA_Denver

WELLPATH LOCATION						
	Local coordinates		Grid coordinates		Geographic coordinates	
	North[ft]	East[ft]	Easting[US ft]	Northing[US ft]	Latitude	Longitude
Slot Location	-29.87	0.22	3185352.05	1378545.35	40°22'14.1600"N	104°50'5.1720"W
Facility Reference Pt			3185351.83	1378575.22	40°22'14.4552"N	104°50'5.1720"W
Field Reference Pt			3296400.32	1413291.61	40°27'46.8000"N	104°26'5.1000"W

WELLPATH DATUM			
Calculation method	Minimum Curvature	(4984'GL+30'KB@5014'RKB) (RKB) to Facility Vertical Datum	5014.00ft
Horizontal Reference Pt	Slot	(4984'GL+30'KB@5014'RKB) (RKB) to Mean Sea Level	5014.00ft
Vertical Reference Pt	(4984'GL+30'KB@5014'RKB) (RKB)	(4984'GL+30'KB@5014'RKB) (RKB) to Ground Level at Slot (SLOT#03 BOOTH STATE 03NA (2655'FSL & 752'FEL,SEC.25))	5014.00ft
MD Reference Pt	(4984'GL+30'KB@5014'RKB) (RKB)		
Field Vertical Reference	Mean Sea Level		

POSITIONAL UNCERTAINTY CALCULATION SETTINGS					
Ellipse Confidence Limit	3.50 Std Dev	Ellipse Start MD	30.00ft	Surface Position Uncertainty	included
Declination	7.75° East of TN	Dip Angle	66.50°	Mag Field Strength	51619 nT
Slot Surface Uncertainty @1SD		Horizontal	0.100ft	Vertical	1.000ft
Facility Surface Uncertainty @1SD		Horizontal	8.200ft	Vertical	3.000ft
Positional Uncertainty values in the WELLPATH DATA table are the projection of the ellipsoid of uncertainty onto the vertical and horizontal planes					



Closest Approach Clearance Summary Report

BOOTH STATE 03NA (REV-A.0) PWP - SPE WPTS Stop Drilling HSE Risk (2017)
Page 2 of 5



REFERENCE WELLPATH IDENTIFICATION			
Operator	PDC ENERGY INC	Well	BOOTH STATE 03NA
Field	WELD COUNTY (NAD83/GRID)	API/Legal	
Facility	SEC.25-T05N-R67W	Wellbore	BOOTH STATE 03NA PWB
Slot	SLOT#03 BOOTH STATE 03NA (2655'FSL & 752'FEL,SEC.25)		

PROXIMITY-SCAN RULE			
Rule Name	SPE WPTS Stop Drilling HSE Risk (2017)	Rule Based On	Ratio
Plane of Rule	Closest Approach	Threshold Value	1.00
Include Casing & Hole Size	yes	Apply Cone of Safety	no

SURVEY PROGRAM - Ref Wellbore: BOOTH STATE 03NA PWB Ref Wellpath: BOOTH STATE 03NA (REV-A.0) PWP				
Start MD [ft]	End MD [ft]	Positional Uncertainty Model	Log Name/Comment	Wellbore
30.00	2000.00	OWSG MWD rev2 - Standard		BOOTH STATE 03NA PWB
2000.00	18146.48	OWSG MWD rev2 (MS+IFR1)		BOOTH STATE 03NA PWB



Closest Approach Clearance Summary Report

BOOTH STATE 03NA (REV-A.0) PWP - SPE WPTS Stop Drilling HSE Risk (2017)
Page 3 of 5



REFERENCE WELLPATH IDENTIFICATION			
Operator	PDC ENERGY INC	Well	BOOTH STATE 03NA
Field	WELD COUNTY (NAD83/GRID)	API/Legal	
Facility	SEC.25-T05N-R67W	Wellbore	BOOTH STATE 03NA PWB
Slot	SLOT#03 BOOTH STATE 03NA (2655'FSL & 752'FEL,SEC.25)		

CALCULATION RANGE & CUTOFF		
From: 30.00ft MD	To: 18146.48ft MD	C-C Cutoff: (none)

OFFSET WELL CLEARANCE SUMMARY (54 Offset Wellpaths selected) Ratios are calculated in Closest Approach plane												
Offset Facility	Offset Slot	Offset Well	Offset Wellbore	Offset Wellpath	Wellbore Status	C-C Clearance Distance			Rule Separation Ratio			
						Ref MD [ft]	Min C-C Clear Dist [ft]	Diverging from MD [ft]	Ref MD of Min Ratio [ft]	Min Ratio	Min Ratio Dvrg from [ft]	Rule Status
SEC.26-T05N-R67W	SLOT#02 BLEHM N #26-19 (05-123-23361) SI	BLEHM N #26-19	BLEHM N #26-19 AWB	BLEHM N #26-19 AWP	Producing / injecting	16887.84	19.30	16887.84	16887.84	0.00	16887.84	FAIL
SEC.25-T05N-R67W	SLOT#24 BOOTH N #25-19 (05-123-25620) SI	BOOTH N #25-19 (05-123-25620) SI	BOOTH N #25-19 AWB	BOOTH N #25-19 AWP (SI)	Producing / injecting	11863.16	33.81	11863.16	11863.16	0.00	11863.16	FAIL
SEC.26-T05N-R67W	SLOT#06 BLEHM #26-17 (05-123-23036) TA	BLEHM #26-17	BLEHM #26-17 AWB	BLEHM #26-17 AWP	Abandoned	14353.94	78.68	14353.94	14353.91	0.01	14353.91	FAIL
SEC.25-T05N-R67W	SLOT#32 BOOTH #25-15 (05-123-28106) PR	BOOTH #25-15 (05-123-28106) PR	BOOTH #25-15 AWB	BOOTH #25-15 AWP (PR)	Producing / injecting	9194.10	199.86	9194.10	9193.96	0.02	9193.96	FAIL
SEC.25-T05N-R67W	SLOT#22 BOOTH #25-12 (05-123-17336) PA	BOOTH #25-12 (05-123-17336) PA	BOOTH #25-12 AWB	BOOTH #25-12 AWP (PA)	Abandoned	9841.45	290.28	9841.45	9841.15	0.03	9841.15	FAIL
SEC.26-T05N-R67W	SLOT#08 BLEHM #3 (05-123-11103) TA	BLEHM #3	BLEHM #3 AWB	BLEHM #3 AWP	Drilling	17583.19	457.71	17583.19	17582.42	0.05	17582.42	FAIL
SEC.26-T05N-R67W	SLOT#07 VETTER #26-12 (05-123-19413) PA	VETTER #26-12	VETTER #26-12 AWB	VETTER #26-12 AWP	Drilling	14782.65	469.08	14782.65	14781.85	0.05	14781.85	FAIL
SEC.25-T05N-R67W	SLOT#17 BOOTH #N 25-3 (05-123-15479) SI	BOOTH #N 25-3 (05-123-15479) SI	BOOTH #N 25-3 AWB	BOOTH #N 25-3 AWP (SI)	Producing / injecting	11126.07	635.67	11126.07	11124.60	0.07	11124.60	FAIL
SEC.25-T05N-R67W	SLOT#23 BOOTH N #25-4 (05-123-15478) SI	BOOTH N #25-4 (05-123-15478) SI	BOOTH N #25-4 AWB	BOOTH N #25-4 AWP (SI)	Producing / injecting	12531.42	644.65	12531.42	12529.90	0.07	12529.90	FAIL
SEC.26-T05N-R67W	SLOT#01 BLEHM N #26-03 (05-123-19438) SI	BLEHM N #26-03	BLEHM N #26-03 AWB	BLEHM N #26-03 AWP (SI)	Producing / injecting	16453.85	649.37	16453.85	16452.30	0.08	16452.30	FAIL
SEC.26-T05N-R67W	SLOT#14 VETTER #26-13 (05-123-19998) PA	VETTER #26-13	VETTER #26-13 AWB	VETTER #26-13 AWP	Abandoned	15114.60	676.77	15114.60	15112.90	0.08	15112.90	FAIL
SEC.26-T05N-R67W	SLOT#15 BLEHM N #26-5 (05-123-19492) PA	BLEHM N #26-5	BLEHM N #26-5 AWB	BLEHM N #26-5 AWP	Abandoned	17407.71	684.35	17407.71	17405.96	0.08	17405.96	FAIL
SEC.25-T05N-R67W	SLOT#33 BOOTH #N 25-5 (05-123-18082) SI	BOOTH #N 25-5 (05-123-18082) SI	BOOTH #N 25-5 AWB	BOOTH #N 25-5 AWP (SI)	Producing / injecting	12498.59	696.97	12498.59	12496.79	0.08	12496.79	FAIL
SEC.25-T05N-R67W	SLOT#29 BOOTH #N 25-6 (05-123-18083) SI	BOOTH #N 25-6 (05-123-18083) SI	BOOTH #N 25-6 AWB	BOOTH #N 25-6 AWP (SI)	Producing / injecting	11118.60	750.51	11118.60	11116.52	0.09	11116.52	FAIL
SEC.26-T05N-R67W	SLOT#11 BLEHM N #26-8 (05-123-23344) SI	BLEHM N #26-8	BLEHM N #26-8 AWB	BLEHM N #26-8 AWP	Producing / injecting	13773.73	771.82	13773.73	13771.52	0.09	13771.52	FAIL
SEC.26-T05N-R67W	SLOT#12 BLEHM #2 (05-123-11006) PA	BLEHM #2	BLEHM #2 AWB	BLEHM #2 AWP	Drilling	16277.29	902.16	16277.29	16274.26	0.10	16274.26	FAIL
SEC.25-T05N-R67W	SLOT#28 BOOTH #25-14 (05-123-17369) PA	BOOTH #25-14 (05-123-17369) PA	BOOTH #25-14 AWB	BOOTH #25-14 AWP (PA)	Abandoned	1647.74	424.76	8613.31	8613.31	0.12	8613.31	FAIL
SEC.26-T05N-R67W	SLOT#03 Booth N #25-32D (05-123-31660) PR	Booth N #25-32D	Booth N #25-32D AWB	Booth N #25-32D AWP (PR)	Producing / injecting	12878.70	1342.76	12878.70	12941.96	0.21	12941.96	FAIL
SEC.25-T05N-R67W	SLOT#21 BOOTH N #25-11 (05-123-22680) PA	BOOTH N #25-11 (05-123-22680) PA	BOOTH N #25-11 AWB	BOOTH N #25-11 AWP (PA)	Abandoned	11048.95	2023.09	11048.95	11033.73	0.23	11033.73	FAIL
SEC.25-T05N-R67W	SLOT#20 BOOTH N #25-9 (05-123-21924) PA	BOOTH N #25-9 (05-123-21924) PA	BOOTH N #25-9 AWB	BOOTH N #25-9 AWP (PA)	Abandoned	30.00	623.51	8294.56	8294.56	0.24	8294.56	FAIL
SEC.26-T05N-R67W	SLOT#10 BOOTH #13-26 (05-123-17941) TA	BOOTH #13-26	BOOTH #13-26 AWB	BOOTH #13-26 AWP	Abandoned	17379.61	2087.56	17379.61	17363.20	0.25	17363.20	FAIL
SEC.25-T05N-R67W	SLOT#26 BOOTH N #25-10 (05-123-21925) PA	BOOTH N #25-10 (05-123-21925) PA	BOOTH N #25-10 AWB	BOOTH N #25-10 AWP (PA)	Abandoned	30.00	1470.23	9730.00	9700.91	0.26	9700.91	FAIL
SEC.25-T05N-R67W	SLOT#27 BOOTH N #25-12 (05-123-22681) PA	BOOTH N #25-12 (05-123-22681) PA	BOOTH N #25-12 AWB	BOOTH N #25-12 AWP (PA)	Abandoned	12483.82	2345.78	12483.82	12463.25	0.27	12463.25	FAIL
SEC.26-T05N-R67W	SLOT#09 BOOTH #33-26 (05-123-18228) PA	BOOTH #33-26	BOOTH #33-26 AWB	BOOTH #33-26 AWP	Abandoned	14773.17	2415.52	14773.17	14751.34	0.28	14751.34	FAIL
SEC.25-T05N-R67W	SLOT#19 BOOTH N #25-23 (05-123-23167) PA	BOOTH N #25-23 (05-123-23167) PA	BOOTH N #25-23 AWB	BOOTH N #25-23 AWP (PA)	Abandoned	130.00	1270.61	8856.73	8856.73	0.31	8856.73	FAIL



Closest Approach Clearance Summary Report

BOOTH STATE 03NA (REV-A.0) PWP - SPE WPTS Stop Drilling HSE Risk (2017)
Page 4 of 5



REFERENCE WELLPATH IDENTIFICATION			
Operator	PDC ENERGY INC	Well	BOOTH STATE 03NA
Field	WELD COUNTY (NAD83/GRID)	API/Legal	
Facility	SEC.25-T05N-R67W	Wellbore	BOOTH STATE 03NA PWB
Slot	SLOT#03 BOOTH STATE 03NA (2655'FSL & 752'FEL,SEC.25)		

CALCULATION RANGE & CUTOFF		
From: 30.00ft MD	To: 18146.48ft MD	C-C Cutoff: (none)

OFFSET WELL CLEARANCE SUMMARY (54 Offset Wellpaths selected) Ratios are calculated in Closest Approach plane												
Offset Facility	Offset Slot	Offset Well	Offset Wellbore	Offset Wellpath	Wellbore Status	C-C Clearance Distance			Rule Separation Ratio			
						Ref MD [ft]	Min C-C Clear Dist [ft]	Diverging from MD [ft]	Ref MD of Min Ratio [ft]	Min Ratio	Min Ratio Dvrg from [ft]	Rule Status
SEC.25-T05N-R67W	SLOT#13 BOOTH N #25-25 (05-123-22706) PA	BOOTH N #25-25 (05-123-22706) PA	BOOTH N #25-25 AWB	BOOTH N #25-25 AWP (PA)	Abandoned	11745.49	2795.49	11745.49	11716.26	0.32	11716.26	FAIL
SEC.25-T05N-R67W	SLOT#15 BOOTH N #25-13 (05-123-22708) TA	BOOTH N #25-13 (05-123-22708) TA	BOOTH N #25-13 AWB	BOOTH N #25-13 AWP (TA)	Abandoned	11715.94	2796.80	11715.94	11686.68	0.32	11686.68	FAIL
SEC.26-T05N-R67W	SLOT#17 BLEHM #1 (05-123-10692) TA	BLEHM #1	BLEHM #1 AWB	BLEHM #1 AWP	Abandoned	17018.81	2905.63	17018.81	16986.98	0.34	16986.98	FAIL
SEC.25-T05N-R67W	SLOT#34 BOOTH N #25-15 (05-123-21926) PA	BOOTH N #25-15 (05-123-21926) PA	BOOTH N #25-15 AWB	BOOTH N #25-15 AWP (PA)	Abandoned	130.00	2189.94	9632.08	9632.08	0.39	9632.08	FAIL
SEC.25-T05N-R67W	SLOT#30 BOOTH N #25-16 (05-123-21927) PA	BOOTH N #25-16 (05-123-21927) PA	BOOTH N #25-16 AWB	BOOTH N #25-16 AWP (PA)	Abandoned	130.00	2012.90	8437.05	8437.05	0.40	8437.05	FAIL
SEC.26-T05N-R67W	SLOT#16 BOOTH #34-26 (05-123-18230) PA	BOOTH #34-26	BOOTH #34-26 AWB	BOOTH #34-26 AWP	Abandoned	14959.65	3741.39	14959.65	14907.04	0.44	14907.04	FAIL
SEC.25-T05N-R67W	SLOT#31 BOOTH #25-32 (05-123-19894) PA	BOOTH #25-32 (05-123-19894) PA	BOOTH #25-32 AWB	BOOTH #25-32 AWP (PA)	Abandoned	9531.01	671.69	9531.01	9527.08	0.80	9527.08	FAIL
SEC.25-T05N-R67W	SLOT#02 BOOTH STATE 02N (2670'FSL & 752'FEL,SEC.25)	BOOTH STATE 02N	BOOTH STATE 02N PWB	BOOTH STATE 02N (REV-A.0) PWP	Planned	687.73	11.28	687.73	723.57	0.88	18146.48	FAIL
SEC.25-T05N-R67W	SLOT#04 BOOTH STATE 04C (2640'FSL & 752'FEL,SEC.25)	BOOTH STATE 04C	BOOTH STATE 04C PWB	BOOTH STATE 04C (REV-A.0) PWP	Planned	30.00	15.30	400.00	615.42	1.59	18130.00	PASS
SEC.25-T05N-R67W	SLOT#25 Booth N #25-31D (05-123-31514) SI	Booth N #25-31D (05-123-31514) SI	Booth N #25-31D AWB	Booth N #25-31D AWP (SI)	Producing / injecting	13121.87	223.12	13121.87	13122.40	1.61	13122.40	PASS
SEC.25-T05N-R67W	SLOT#18 Booth N #25-18D (05-123-31511) PA	Booth N #25-18D (05-123-31511) PA	Booth N #25-18D AWB	Booth N #25-18D AWP (PA)	Abandoned	10511.07	240.89	10511.07	10497.40	2.57	10497.40	PASS
SEC.25-T05N-R67W	SLOT#05 BOOTH STATE 05N (2625'FSL & 752'FEL,SEC.25)	BOOTH STATE 05N	BOOTH STATE 05N PWB	BOOTH STATE 05N (REV-A.0) PWP	Planned	30.00	30.24	400.00	18140.96	2.73	18140.96	PASS
SEC.25-T05N-R67W	SLOT#01 BOOTH STATE 01N (2588'FNL & 752'FEL,SEC.25)	BOOTH STATE 01N	BOOTH STATE 01N PWB	BOOTH STATE 01N (REV-A.0) PWP	Planned	30.00	29.87	230.00	18146.48	2.74	18146.48	PASS
SEC.26-T05N-R67W	SLOT#05 BLEHM N #26-1 (05-123-22113) PA Gyro Need Survey	BLEHM N #26-1	BLEHM N #26-1 AWB	BLEHM N #26-1 AWP	Abandoned	13571.04	569.14	13571.04	13601.35	3.74	13601.35	PASS
SEC.25-T05N-R67W	SLOT#06 BOOTH STATE 06N (2610'FSL & 752'FEL,SEC.25)	BOOTH STATE 06N	BOOTH STATE 06N PWB	BOOTH STATE 06N (REV-A.0) PWP	Planned	417.96	44.90	417.96	18146.48	4.12	18146.48	PASS
SEC.25-T05N-R67W	SLOT#07 BOOTH STATE 07NA (2595'FSL & 752'FEL,SEC.25)	BOOTH STATE 07NA	BOOTH STATE 07NA PWB	BOOTH STATE 07NA (REV-A.0) PWP	Planned	30.00	60.11	400.00	18146.48	5.41	18146.48	PASS
SEC.25-T05N-R67W	SLOT#16 BOOTH #25-11 (05-123-16856) PA	BOOTH #25-11 (05-123-16856) PA	BOOTH #25-11 AWB	BOOTH #25-11 AWP (PA)	Abandoned	8544.78	383.88	8544.78	8558.00	5.81	8558.00	PASS
SEC.25-T05N-R67W	SLOT#08 BOOTH STATE 08C (2580'FSL & 753'FEL,SEC.25)	BOOTH STATE 08C	BOOTH STATE 08C PWB	BOOTH STATE 08C (REV-A.0) PWP	Planned	30.00	75.05	400.00	18146.48	6.85	18146.48	PASS
SEC.25-T05N-R67W	SLOT#09 BOOTH STATE 09N (2565'FSL & 753'FEL,SEC.25)	BOOTH STATE 09N	BOOTH STATE 09N PWB	BOOTH STATE 09N (REV-A.0) PWP	Planned	30.00	90.35	400.00	18146.48	8.14	18146.48	PASS
SEC.25-T05N-R67W	SLOT#10 BOOTH STATE 10N (2550'FSL & 753'FEL,SEC.25)	BOOTH STATE 10N	BOOTH STATE 10N PWB	BOOTH STATE 10N (REV-A.0) PWP	Planned	30.00	105.29	400.00	18146.48	9.50	18146.48	PASS
SEC.25-T05N-R67W	SLOT#11 BOOTH STATE 11N (2535'FSL & 753'FEL,SEC.25)	BOOTH STATE 11N	BOOTH STATE 11N PWB	BOOTH STATE 11N (REV-A.0) PWP	Planned	30.00	120.23	230.00	18146.48	10.84	18146.48	PASS
SEC.25-T05N-R67W	SLOT#35 Booth N #25-20D (05-123-31645) TA	Booth N #25-20D (05-123-31645) TA	Booth N #25-20D AWB	Booth N #25-20D AWP (TA)	Abandoned	11631.69	1424.11	11631.69	11594.51	11.57	11594.51	PASS
SEC.25-T05N-R67W	SLOT#12 BOOTH STATE 12N (2520'FSL & 753'FEL,SEC.25)	BOOTH STATE 12N	BOOTH STATE 12N PWB	BOOTH STATE 12N (REV-A.0) PWP	Planned	30.00	135.16	230.00	18146.48	12.19	18146.48	PASS
SEC.25-T05N-R67W	SLOT#38 Booth N #25-21D (05-123-31648) PA	Booth N #25-21D (05-123-31648) PA	Booth N #25-21D AWB	Booth N #25-21D AWP (PA)	Abandoned	10242.09	1377.04	10242.09	10451.48	15.60	10451.48	PASS
SEC.26-T05N-R67W	SLOT#13 BOOTH #24-26 (05-123-17942) PA	BOOTH #24-26	BOOTH #24-26 AWB	BOOTH #24-26 AWP	Abandoned	16526.07	3676.78	16526.07	17169.78	17.24	17169.78	PASS



Closest Approach Clearance Summary Report

BOOTH STATE 03NA (REV-A.0) PWP - SPE WPTS Stop Drilling HSE Risk (2017)
Page 5 of 5



REFERENCE WELLPATH IDENTIFICATION			
Operator	PDC ENERGY INC	Well	BOOTH STATE 03NA
Field	WELD COUNTY (NAD83/GRID)	API/Legal	
Facility	SEC.25-T05N-R67W	Wellbore	BOOTH STATE 03NA PWB
Slot	SLOT#03 BOOTH STATE 03NA (2655'FSL & 752'FEL,SEC.25)		

CALCULATION RANGE & CUTOFF		
From: 30.00ft MD	To: 18146.48ft MD	C-C Cutoff: (none)

OFFSET WELL CLEARANCE SUMMARY (54 Offset Wellpaths selected) Ratios are calculated in Closest Approach plane												
Offset Facility	Offset Slot	Offset Well	Offset Wellbore	Offset Wellpath	Wellbore Status	C-C Clearance Distance			Rule Separation Ratio			
						Ref MD [ft]	Min C-C Clear Dist [ft]	Diverging from MD [ft]	Ref MD of Min Ratio [ft]	Min Ratio	Min Ratio Dvrg from [ft]	Rule Status
SEC.25-T05N-R67W	SLOT#36 Booth N #25-22D (05-123-31646) PA	Booth N #25-22D (05-123-31646) PA	Booth N #25-22D AWB	Booth N #25-22D AWP (PA)	Abandoned	9186.89	1669.21	9186.89	9725.53	20.07	9725.53	PASS
SEC.26-T05N-R67W	SLOT#04 BOOTH N #25-33D (05-123-31666) PR	BOOTH N #25-33D	BOOTH N #25-33D AWB	BOOTH N #25-33D AWP	Drilling	12880.12	2951.10	12880.12	13450.84	20.85	13450.84	PASS
SEC.25-T05N-R67W	SLOT#37 Booth N #25-24D (05-123-31647) PA	Booth N #25-24D (05-123-31647) PA	Booth N #25-24D AWB	Booth N #25-24D AWP (PA)	Abandoned	401.80	2582.21	10430.00	11187.84	30.02	11187.84	PASS
SEC.25-T05N-R67W	SLOT#14 BOOTH N #25-14 (05-123-22709) PA	BOOTH N #25-14 (05-123-22709) PA	BOOTH N #25-14 AWB	BOOTH N #25-14 AWP (PA)	Abandoned	84.00	3460.24	10930.00	12063.77	34.18	12063.77	PASS