

PDC ENERGY INC

Location: COLORADO Slot: SLOT#01 BOOTH STATE 01N (2588'FNL & 752'FEL,SEC.25)

Field: WELD COUNTY (NAD83/GRID) Well: BOOTH STATE 01N

Facility: SEC.25-T05N-R67W Wellbore: BOOTH STATE 01N PWB

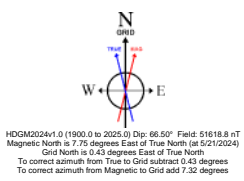
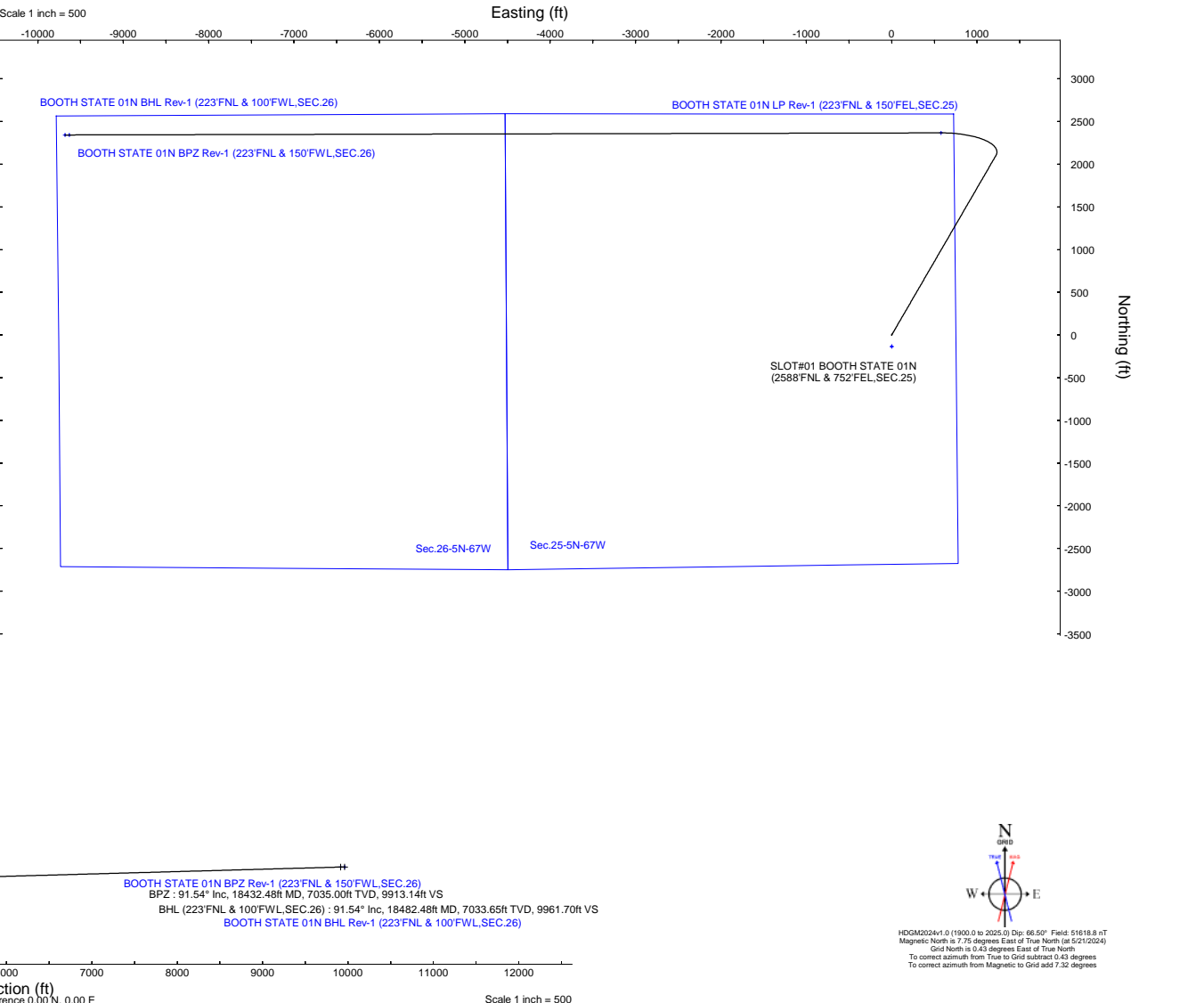
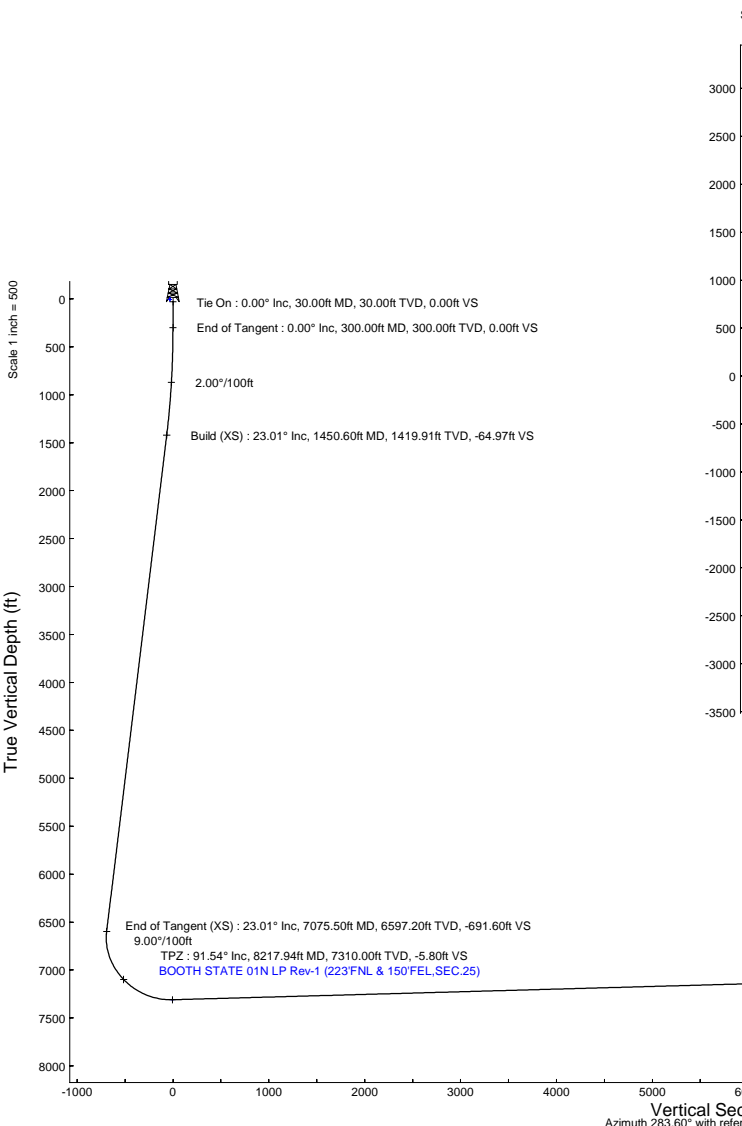
Plot reference wellpath is **BOOTH STATE 01N (REV-A.0) PWP**

Grid System: NAD83 / Lambert Colorado SP, Northern Zone (S01), US feet
 North Reference: Grid north
 Scale: True distance
 Coordinates are in feet referenced to Slot
 Depths are in feet
 Created by: guenater on 2024-05-25; Database: WA_Deriver

Location Information						
Facility Name		Grid East (US ft)	Grid North (US ft)	Latitude	Longitude	
SEC.25-T05N-R67W		3185351.829	1378575.217	40°22'14.4552"N	104°50'5.1828"W	
Slot	Local N (ft)	Local E (ft)	Grid East (US ft)	Grid North (US ft)	Latitude	Longitude
SLOT#01 BOOTH STATE 01N (2588'FNL & 752'FEL, SEC.25)	0.00	0.00	3185351.829	1378575.217	40°22'14.4552"N	104°50'5.1828"W
[4985'GL+30'KB = 5015'RK(B) (RKB) to Ground level (At Slot: SLOT#01 BOOTH STATE 01N (2588'FNL & 752'FEL, SEC.25))		5015ft				
Mean Sea Level to Ground level (At Slot: SLOT#01 BOOTH STATE 01N (2588'FNL & 752'FEL, SEC.25))		0ft				
[4985'GL+30'KB = 5015'RK(B) (RKB) to Mean Sea Level		5015ft				

Targets									
Name	MD (ft)	TVD (ft)	Local N (ft)	Local E (ft)	Grid East (US ft)	Grid North (US ft)	Latitude	Longitude	
Sec.25-5N-67W	N/A	5.00	-135.16	0.18	3185352.01	1378440.06	40°22'13.1196"N	104°50'5.1828"W	
Sec.26-5N-67W	N/A	5.00	-135.16	0.18	3185352.01	1378440.06	40°22'13.1196"N	104°50'5.1828"W	
BOOTH STATE 01N BHL Rev-1 (223'FNL & 100'FWL,SEC.26)	N/A	7035.00	2341.42	-9682.45	3175669.79	1380916.54	40°22'38.2908"N	104°52'0.0488"W	
BOOTH STATE 01N BPZ Rev-1 (223'FNL & 150'FWL,SEC.26)	18432.48	7035.00	2341.77	-9632.58	3175719.66	1380916.89	40°22'38.2908"N	104°52'9.4044"W	
BOOTH STATE 01N LP Rev-1 (223'FNL & 150'FWL,SEC.25)	8217.94	7310.00	2366.24	578.23	3185930.03	1380941.35	40°22'37.7840"N	104°49'57.4716"W	

Well Profile Data								
Design Comment	MD (ft)	Inc (°)	Az (°)	TVD (ft)	Local N (ft)	Local E (ft)	DLS (°/100ft)	VS (ft)
Tie On	30.00	0.000	30.153	30.00	0.00	0.00	0.00	0.00
End of Tangent	300.00	0.000	30.153	300.00	0.00	0.00	0.00	0.00
Build (XS)	1450.60	23.012	30.153	1419.91	197.12	114.51	2.00	-64.97
End of Tangent (XS)	7075.50	23.012	30.153	6597.20	2098.48	1219.04	0.00	-691.60
TPZ	8217.94	91.543	269.863	7310.00	2366.24	578.23	9.00	-5.80
BPZ	18432.48	91.543	269.863	7035.00	2341.77	-9632.58	0.00	9913.14
BHL (223'FNL & 100'FWL,SEC.26)	18482.48	91.543	269.863	7033.65	2341.65	-9682.56	0.00	9961.70





Planned Wellpath Report

BOOTH STATE 01N (REV-A.0) PWP
Page 1 of 8



REFERENCE WELLPATH IDENTIFICATION

Operator	PDC ENERGY INC	Well	BOOTH STATE 01N
Field	WELD COUNTY (NAD83/GRID)	API/Legal	
Facility	SEC.25-T05N-R67W	Wellbore	BOOTH STATE 01N PWB
Slot	SLOT#01 BOOTH STATE 01N (2588'FNL & 752'FEL,SEC.25)		

REPORT SETUP INFORMATION

Projection System	NAD83 / Lambert Colorado SP, Northern Zone (501), US feet	Software System	WellArchitect® 6.0
North Reference	Grid	User	Guenaler
Scale	0.999959	Report Generated	5/25/2024 at 9:38:27 PM
Convergence at slot	0.43° East	Database	WA_Denver

WELLPATH LOCATION

	Local coordinates		Grid coordinates		Geographic coordinates	
	North[ft]	East[ft]	Easting[US ft]	Northing[US ft]	Latitude	Longitude
Slot Location	0.00	0.00	3185351.83	1378575.22	40.3706820°	-104.8347700°
Facility Reference Pt			3185351.83	1378575.22	40.3706820°	-104.8347700°
Field Reference Pt			3296400.32	1413291.61	40.4630000°	-104.4347500°

WELLPATH DATUM

Calculation method	Minimum curvature	(4985'GL+30'KB = 5015'RKB) (RKB) to Facility Vertical Datum	5015.00ft
Horizontal Reference Pt	Slot	(4985'GL+30'KB = 5015'RKB) (RKB) to Mean Sea Level	5015.00ft
Vertical Reference Pt	(4985'GL+30'KB = 5015'RKB) (RKB)	(4985'GL+30'KB = 5015'RKB) (RKB) to Ground Level at Slot (SLOT#01 BOOTH STATE 01N (2588'FNL & 752'FEL,SEC.25))	5015.00ft
MD Reference Pt	(4985'GL+30'KB = 5015'RKB) (RKB)	Section Origin	N 0.00, E 0.00 ft
Field Vertical Reference	Mean Sea Level	Section Azimuth	283.60°



Planned Wellpath Report

BOOTH STATE 01N (REV-A.0) PWP
Page 2 of 8



REFERENCE WELLPATH IDENTIFICATION			
Operator	PDC ENERGY INC	Well	BOOTH STATE 01N
Field	WELD COUNTY (NAD83/GRID)	API/Legal	
Facility	SEC.25-T05N-R67W	Wellbore	BOOTH STATE 01N PWB
Slot	SLOT#01 BOOTH STATE 01N (2588'FNL & 752'FEL,SEC.25)		

WELLPATH DATA (204 stations) † = interpolated, ‡ = extrapolated station										
MD [ft]	Inclination [°]	Azimuth [°]	TVD [ft]	Vert Sect [ft]	North [ft]	East [ft]	Latitude	Longitude	DLS [°/100ft]	Comments
0.00†	0.000	30.153	0.00	0.00	0.00	0.00	40.3706820	-104.8347700	0.00	
30.00	0.000	30.153	30.00	0.00	0.00	0.00	40.3706820	-104.8347700	0.00	Tie On
130.00†	0.000	30.153	130.00	0.00	0.00	0.00	40.3706820	-104.8347700	0.00	
230.00†	0.000	30.153	230.00	0.00	0.00	0.00	40.3706820	-104.8347700	0.00	
300.00	0.000	30.153	300.00	0.00	0.00	0.00	40.3706820	-104.8347700	0.00	End of Tangent
330.00†	0.600	30.153	330.00	-0.04	0.14	0.08	40.3706824	-104.8347697	2.00	
430.00†	2.600	30.153	429.96	-0.84	2.55	1.48	40.3706890	-104.8347646	2.00	
530.00†	4.600	30.153	529.75	-2.63	7.98	4.64	40.3707038	-104.8347532	2.00	
630.00†	6.600	30.153	629.27	-5.41	16.42	9.54	40.3707269	-104.8347353	2.00	
730.00†	8.600	30.153	728.39	-9.18	27.85	16.18	40.3707581	-104.8347112	2.00	
830.00†	10.600	30.153	826.98	-13.93	42.27	24.56	40.3707975	-104.8346807	2.00	
904.48†	12.090	30.153	900.00	-18.11	54.94	31.92	40.3708321	-104.8346540	2.00	PIERRE
930.00†	12.600	30.153	924.93	-19.66	59.66	34.66	40.3708450	-104.8346440	2.00	
1027.80†	14.556	30.153	1020.00	-26.20	79.51	46.19	40.3708993	-104.8346021	2.00	U PAWNEE
1030.00†	14.600	30.153	1022.13	-26.36	79.99	46.47	40.3709006	-104.8346011	2.00	
1130.00†	16.600	30.153	1118.44	-34.03	103.24	59.97	40.3709641	-104.8345520	2.00	
1230.00†	18.600	30.153	1213.75	-42.64	129.39	75.16	40.3710356	-104.8344968	2.00	
1330.00†	20.600	30.153	1307.95	-52.20	158.39	92.01	40.3711149	-104.8344355	2.00	
1430.00†	22.600	30.153	1400.93	-62.69	190.22	110.50	40.3712018	-104.8343683	2.00	
1450.60	23.012	30.153	1419.91	-64.97	197.12	114.51	40.3712207	-104.8343537	2.00	Build (XS)
1530.00†	23.012	30.153	1493.00	-73.81	223.96	130.10	40.3712941	-104.8342971	0.00	
1543.04†	23.012	30.153	1505.00	-75.26	228.37	132.66	40.3713061	-104.8342878	0.00	U PAWNEE BASE
1630.00†	23.012	30.153	1585.04	-84.95	257.77	149.74	40.3713864	-104.8342257	0.00	
1730.00†	23.012	30.153	1677.08	-96.09	291.57	169.38	40.3714788	-104.8341543	0.00	
1830.00†	23.012	30.153	1769.12	-107.23	325.37	189.01	40.3715712	-104.8340829	0.00	
1930.00†	23.012	30.153	1861.17	-118.37	359.17	208.65	40.3716636	-104.8340115	0.00	
2030.00†	23.012	30.153	1953.21	-129.51	392.98	228.29	40.3717560	-104.8339402	0.00	
2130.00†	23.012	30.153	2045.25	-140.65	426.78	247.92	40.3718483	-104.8338688	0.00	
2230.00†	23.012	30.153	2137.29	-151.79	460.58	267.56	40.3719407	-104.8337974	0.00	
2330.00†	23.012	30.153	2229.34	-162.94	494.38	287.20	40.3720331	-104.8337260	0.00	
2430.00†	23.012	30.153	2321.38	-174.08	528.19	306.83	40.3721255	-104.8336546	0.00	
2530.00†	23.012	30.153	2413.42	-185.22	561.99	326.47	40.3722178	-104.8335832	0.00	
2630.00†	23.012	30.153	2505.46	-196.36	595.79	346.10	40.3723102	-104.8335119	0.00	
2730.00†	23.012	30.153	2597.50	-207.50	629.59	365.74	40.3724026	-104.8334405	0.00	
2830.00†	23.012	30.153	2689.55	-218.64	663.40	385.38	40.3724950	-104.8333691	0.00	
2930.00†	23.012	30.153	2781.59	-229.78	697.20	405.01	40.3725873	-104.8332977	0.00	
3030.00†	23.012	30.153	2873.63	-240.92	731.00	424.65	40.3726797	-104.8332263	0.00	
3130.00†	23.012	30.153	2965.67	-252.06	764.80	444.29	40.3727721	-104.8331549	0.00	
3230.00†	23.012	30.153	3057.72	-263.20	798.61	463.92	40.3728645	-104.8330836	0.00	
3330.00†	23.012	30.153	3149.76	-274.34	832.41	483.56	40.3729569	-104.8330122	0.00	
3430.00†	23.012	30.153	3241.80	-285.48	866.21	503.20	40.3730492	-104.8329408	0.00	
3530.00†	23.012	30.153	3333.84	-296.62	900.01	522.83	40.3731416	-104.8328694	0.00	
3630.00†	23.012	30.153	3425.89	-307.76	933.82	542.47	40.3732340	-104.8327980	0.00	
3730.00†	23.012	30.153	3517.93	-318.90	967.62	562.11	40.3733264	-104.8327266	0.00	
3830.00†	23.012	30.153	3609.97	-330.04	1001.42	581.74	40.3734187	-104.8326552	0.00	



Planned Wellpath Report

BOOTH STATE 01N (REV-A.0) PWP
Page 3 of 8



REFERENCE WELLPATH IDENTIFICATION			
Operator	PDC ENERGY INC	Well	BOOTH STATE 01N
Field	WELD COUNTY (NAD83/GRID)	API/Legal	
Facility	SEC.25-T05N-R67W	Wellbore	BOOTH STATE 01N PWB
Slot	SLOT#01 BOOTH STATE 01N (2588'FNL & 752'FEL,SEC.25)		

WELLPATH DATA (204 stations) † = interpolated, ‡ = extrapolated station										
MD [ft]	Inclination [°]	Azimuth [°]	TVD [ft]	Vert Sect [ft]	North [ft]	East [ft]	Latitude	Longitude	DLS [°/100ft]	Comments
3930.00†	23.012	30.153	3702.01	-341.18	1035.23	601.38	40.3735111	-104.8325839	0.00	
4030.00†	23.012	30.153	3794.06	-352.32	1069.03	621.01	40.3736035	-104.8325125	0.00	
4069.05†	23.012	30.153	3830.00	-356.67	1082.23	628.68	40.3736396	-104.8324846	0.00	Parkman Sandstone
4130.00†	23.012	30.153	3886.10	-363.46	1102.83	640.65	40.3736959	-104.8324411	0.00	
4230.00†	23.012	30.153	3978.14	-374.60	1136.63	660.29	40.3737882	-104.8323697	0.00	
4330.00†	23.012	30.153	4070.18	-385.74	1170.44	679.92	40.3738806	-104.8322983	0.00	
4430.00†	23.012	30.153	4162.22	-396.88	1204.24	699.56	40.3739730	-104.8322269	0.00	
4530.00†	23.012	30.153	4254.27	-408.02	1238.04	719.20	40.3740654	-104.8321555	0.00	
4630.00†	23.012	30.153	4346.31	-419.16	1271.84	738.83	40.3741578	-104.8320842	0.00	
4630.75†	23.012	30.153	4347.00	-419.25	1272.10	738.98	40.3741584	-104.8320836	0.00	Sussex Sandstone
4730.00†	23.012	30.153	4438.35	-430.30	1305.65	758.47	40.3742501	-104.8320128	0.00	
4830.00†	23.012	30.153	4530.39	-441.44	1339.45	778.11	40.3743425	-104.8319414	0.00	
4930.00†	23.012	30.153	4622.44	-452.59	1373.25	797.74	40.3744349	-104.8318700	0.00	
5030.00†	23.012	30.153	4714.48	-463.73	1407.05	817.38	40.3745273	-104.8317986	0.00	
5130.00†	23.012	30.153	4806.52	-474.87	1440.86	837.02	40.3746196	-104.8317272	0.00	
5230.00†	23.012	30.153	4898.56	-486.01	1474.66	856.65	40.3747120	-104.8316558	0.00	
5251.12†	23.012	30.153	4918.00	-488.36	1481.80	860.80	40.3747315	-104.8316408	0.00	Shannon Sandstone
5330.00†	23.012	30.153	4990.61	-497.15	1508.46	876.29	40.3748044	-104.8315844	0.00	
5430.00†	23.012	30.153	5082.65	-508.29	1542.26	895.92	40.3748968	-104.8315130	0.00	
5530.00†	23.012	30.153	5174.69	-519.43	1576.07	915.56	40.3749891	-104.8314417	0.00	
5630.00†	23.012	30.153	5266.73	-530.57	1609.87	935.20	40.3750815	-104.8313703	0.00	
5730.00†	23.012	30.153	5358.78	-541.71	1643.67	954.83	40.3751739	-104.8312989	0.00	
5830.00†	23.012	30.153	5450.82	-552.85	1677.47	974.47	40.3752663	-104.8312275	0.00	
5930.00†	23.012	30.153	5542.86	-563.99	1711.28	994.11	40.3753586	-104.8311561	0.00	
6030.00†	23.012	30.153	5634.90	-575.13	1745.08	1013.74	40.3754510	-104.8310847	0.00	
6130.00†	23.012	30.153	5726.94	-586.27	1778.88	1033.38	40.3755434	-104.8310133	0.00	
6230.00†	23.012	30.153	5818.99	-597.41	1812.68	1053.02	40.3756358	-104.8309419	0.00	
6330.00†	23.012	30.153	5911.03	-608.55	1846.49	1072.65	40.3757281	-104.8308705	0.00	
6430.00†	23.012	30.153	6003.07	-619.69	1880.29	1092.29	40.3758205	-104.8307992	0.00	
6530.00†	23.012	30.153	6095.11	-630.83	1914.09	1111.93	40.3759129	-104.8307278	0.00	
6630.00†	23.012	30.153	6187.16	-641.97	1947.89	1131.56	40.3760053	-104.8306564	0.00	
6730.00†	23.012	30.153	6279.20	-653.11	1981.70	1151.20	40.3760976	-104.8305850	0.00	
6830.00†	23.012	30.153	6371.24	-664.25	2015.50	1170.84	40.3761900	-104.8305136	0.00	
6930.00†	23.012	30.153	6463.28	-675.39	2049.30	1190.47	40.3762824	-104.8304422	0.00	
7030.00†	23.012	30.153	6555.33	-686.53	2083.11	1210.11	40.3763748	-104.8303708	0.00	
7075.50	23.012	30.153	6597.20	-691.60	2098.48	1219.04	40.3764168	-104.8303383	0.00	End of Tangent (XS)
7130.00†	21.156	18.046	6647.73	-695.40	2117.06	1227.45	40.3764676	-104.8303077	9.00	
7230.00†	20.422	352.586	6741.41	-690.54	2151.59	1230.79	40.3765623	-104.8302947	9.00	
7330.00†	23.275	329.468	6834.39	-670.49	2185.98	1218.48	40.3766570	-104.8303380	9.00	
7430.00†	28.661	312.870	6924.38	-635.74	2219.38	1190.81	40.3767492	-104.8304364	9.00	
7530.00†	35.441	301.646	7009.16	-587.16	2250.97	1148.46	40.3768368	-104.8305875	9.00	
7630.00†	42.954	293.771	7086.65	-525.93	2279.98	1092.49	40.3769176	-104.8307876	9.00	
7664.01†	45.612	291.597	7111.00	-502.49	2289.12	1070.58	40.3769431	-104.8308660	9.00	Sharon Springs
7714.45†	49.622	288.713	7145.00	-465.48	2301.93	1035.60	40.3769790	-104.8309912	9.00	Niobrara A
7730.00†	50.871	287.893	7154.94	-453.57	2305.68	1024.25	40.3769896	-104.8310318	9.00	



Planned Wellpath Report

BOOTH STATE 01N (REV-A.0) PWP
Page 4 of 8



REFERENCE WELLPATH IDENTIFICATION			
Operator	PDC ENERGY INC	Well	BOOTH STATE 01N
Field	WELD COUNTY (NAD83/GRID)	API/Legal	
Facility	SEC.25-T05N-R67W	Wellbore	BOOTH STATE 01N PWB
Slot	SLOT#01 BOOTH STATE 01N (2588'FNL & 752'FEL,SEC.25)		

WELLPATH DATA (204 stations) † = interpolated, ‡ = extrapolated station										
MD [ft]	Inclination [°]	Azimuth [°]	TVD [ft]	Vert Sect [ft]	North [ft]	East [ft]	Latitude	Longitude	DLS ["/100ft]	Comments
7830.00†	59.023	283.224	7212.35	-371.85	2327.45	945.45	40.3770509	-104.8313141	9.00	
7930.00†	67.317	279.300	7257.46	-282.80	2344.75	858.01	40.3771002	-104.8316274	9.00	
7955.92†	69.482	278.366	7267.00	-258.78	2348.45	834.20	40.3771109	-104.8317128	9.00	Niobrara B
8030.00†	75.694	275.829	7289.16	-188.60	2357.15	764.09	40.3771362	-104.8319642	9.00	
8130.00†	84.119	272.609	7306.67	-91.57	2364.35	666.01	40.3771580	-104.8323160	9.00	
8217.94	91.543	269.863	7310.00 [†]	-5.80	2366.24	578.23	40.3771650	-104.8326310	9.00	TPZ
8230.00†	91.543	269.863	7309.68	5.91	2366.21	566.16	40.3771652	-104.8326743	0.00	
8330.00†	91.543	269.863	7306.98	103.02	2365.97	466.20	40.3771666	-104.8330331	0.00	
8430.00†	91.543	269.863	7304.29	200.13	2365.73	366.24	40.3771680	-104.8333918	0.00	
8530.00†	91.543	269.863	7301.60	297.23	2365.49	266.27	40.3771694	-104.8337506	0.00	
8630.00†	91.543	269.863	7298.91	394.34	2365.25	166.31	40.3771708	-104.8341094	0.00	
8730.00†	91.543	269.863	7296.21	491.44	2365.01	66.35	40.3771722	-104.8344682	0.00	
8830.00†	91.543	269.863	7293.52	588.55	2364.77	-33.62	40.3771736	-104.8348270	0.00	
8930.00†	91.543	269.863	7290.83	685.66	2364.53	-133.58	40.3771750	-104.8351858	0.00	
9030.00†	91.543	269.863	7288.14	782.76	2364.29	-233.54	40.3771764	-104.8355445	0.00	
9130.00†	91.543	269.863	7285.45	879.87	2364.05	-333.51	40.3771778	-104.8359033	0.00	
9230.00†	91.543	269.863	7282.75	976.98	2363.81	-433.47	40.3771792	-104.8362621	0.00	
9330.00†	91.543	269.863	7280.06	1074.08	2363.57	-533.43	40.3771806	-104.8366209	0.00	
9430.00†	91.543	269.863	7277.37	1171.19	2363.33	-633.40	40.3771820	-104.8369797	0.00	
9530.00†	91.543	269.863	7274.68	1268.29	2363.09	-733.36	40.3771834	-104.8373385	0.00	
9630.00†	91.543	269.863	7271.98	1365.40	2362.85	-833.32	40.3771848	-104.8376972	0.00	
9730.00†	91.543	269.863	7269.29	1462.51	2362.62	-933.29	40.3771862	-104.8380560	0.00	
9815.12†	91.543	269.863	7267.00	1545.16	2362.41	-1018.37	40.3771873	-104.8383614	0.00	Niobrara B
9830.00†	91.543	269.863	7266.60	1559.61	2362.38	-1033.25	40.3771875	-104.8384148	0.00	
9930.00†	91.543	269.863	7263.91	1656.72	2362.14	-1133.21	40.3771889	-104.8387736	0.00	
10030.00†	91.543	269.863	7261.21	1753.82	2361.90	-1233.18	40.3771903	-104.8391324	0.00	
10130.00†	91.543	269.863	7258.52	1850.93	2361.66	-1333.14	40.3771917	-104.8394911	0.00	
10230.00†	91.543	269.863	7255.83	1948.04	2361.42	-1433.10	40.3771931	-104.8398499	0.00	
10330.00†	91.543	269.863	7253.14	2045.14	2361.18	-1533.07	40.3771945	-104.8402087	0.00	
10430.00†	91.543	269.863	7250.45	2142.25	2360.94	-1633.03	40.3771959	-104.8405675	0.00	
10530.00†	91.543	269.863	7247.75	2239.36	2360.70	-1732.99	40.3771973	-104.8409263	0.00	
10630.00†	91.543	269.863	7245.06	2336.46	2360.46	-1832.96	40.3771986	-104.8412851	0.00	
10730.00†	91.543	269.863	7242.37	2433.57	2360.22	-1932.92	40.3772000	-104.8416438	0.00	
10830.00†	91.543	269.863	7239.68	2530.67	2359.98	-2032.89	40.3772014	-104.8420026	0.00	
10930.00†	91.543	269.863	7236.98	2627.78	2359.74	-2132.85	40.3772028	-104.8423614	0.00	
11030.00†	91.543	269.863	7234.29	2724.89	2359.50	-2232.81	40.3772041	-104.8427202	0.00	
11130.00†	91.543	269.863	7231.60	2821.99	2359.26	-2332.78	40.3772055	-104.8430790	0.00	
11230.00†	91.543	269.863	7228.91	2919.10	2359.02	-2432.74	40.3772069	-104.8434378	0.00	
11330.00†	91.543	269.863	7226.22	3016.20	2358.78	-2532.70	40.3772083	-104.8437965	0.00	
11430.00†	91.543	269.863	7223.52	3113.31	2358.54	-2632.67	40.3772096	-104.8441553	0.00	
11530.00†	91.543	269.863	7220.83	3210.42	2358.30	-2732.63	40.3772110	-104.8445141	0.00	
11630.00†	91.543	269.863	7218.14	3307.52	2358.07	-2832.59	40.3772124	-104.8448729	0.00	
11730.00†	91.543	269.863	7215.45	3404.63	2357.83	-2932.56	40.3772138	-104.8452317	0.00	
11830.00†	91.543	269.863	7212.75	3501.74	2357.59	-3032.52	40.3772151	-104.8455904	0.00	
11930.00†	91.543	269.863	7210.06	3598.84	2357.35	-3132.48	40.3772165	-104.8459492	0.00	



Planned Wellpath Report

BOOTH STATE 01N (REV-A.0) PWP
Page 5 of 8



REFERENCE WELLPATH IDENTIFICATION			
Operator	PDC ENERGY INC	Well	BOOTH STATE 01N
Field	WELD COUNTY (NAD83/GRID)	API/Legal	
Facility	SEC.25-T05N-R67W	Wellbore	BOOTH STATE 01N PWB
Slot	SLOT#01 BOOTH STATE 01N (2588'FNL & 752'FEL,SEC.25)		

WELLPATH DATA (204 stations) † = interpolated, ‡ = extrapolated station											
MD [ft]	Inclination [°]	Azimuth [°]	TVD [ft]	Vert Sect [ft]	North [ft]	East [ft]	Latitude	Longitude	DLS [°/100ft]	Comments	
12030.00†	91.543	269.863	7207.37	3695.95	2357.11	-3232.45	40.3772179	-104.8463080	0.00		
12130.00†	91.543	269.863	7204.68	3793.05	2356.87	-3332.41	40.3772192	-104.8466668	0.00		
12230.00†	91.543	269.863	7201.99	3890.16	2356.63	-3432.37	40.3772206	-104.8470256	0.00		
12330.00†	91.543	269.863	7199.29	3987.27	2356.39	-3532.34	40.3772219	-104.8473844	0.00		
12430.00†	91.543	269.863	7196.60	4084.37	2356.15	-3632.30	40.3772233	-104.8477431	0.00		
12530.00†	91.543	269.863	7193.91	4181.48	2355.91	-3732.26	40.3772247	-104.8481019	0.00		
12630.00†	91.543	269.863	7191.22	4278.58	2355.67	-3832.23	40.3772260	-104.8484607	0.00		
12730.00†	91.543	269.863	7188.52	4375.69	2355.43	-3932.19	40.3772274	-104.8488195	0.00		
12830.00†	91.543	269.863	7185.83	4472.80	2355.19	-4032.15	40.3772287	-104.8491783	0.00		
12930.00†	91.543	269.863	7183.14	4569.90	2354.95	-4132.12	40.3772301	-104.8495371	0.00		
13030.00†	91.543	269.863	7180.45	4667.01	2354.71	-4232.08	40.3772315	-104.8498958	0.00		
13130.00†	91.543	269.863	7177.76	4764.11	2354.47	-4332.05	40.3772328	-104.8502546	0.00		
13230.00†	91.543	269.863	7175.06	4861.22	2354.23	-4432.01	40.3772342	-104.8506134	0.00		
13330.00†	91.543	269.863	7172.37	4958.33	2353.99	-4531.97	40.3772355	-104.8509722	0.00		
13430.00†	91.543	269.863	7169.68	5055.43	2353.75	-4631.94	40.3772369	-104.8513310	0.00		
13530.00†	91.543	269.863	7166.99	5152.54	2353.52	-4731.90	40.3772382	-104.8516897	0.00		
13630.00†	91.543	269.863	7164.29	5249.65	2353.28	-4831.86	40.3772396	-104.8520485	0.00		
13730.00†	91.543	269.863	7161.60	5346.75	2353.04	-4931.83	40.3772409	-104.8524073	0.00		
13830.00†	91.543	269.863	7158.91	5443.86	2352.80	-5031.79	40.3772423	-104.8527661	0.00		
13930.00†	91.543	269.863	7156.22	5540.96	2352.56	-5131.75	40.3772436	-104.8531249	0.00		
14030.00†	91.543	269.863	7153.53	5638.07	2352.32	-5231.72	40.3772449	-104.8534837	0.00		
14130.00†	91.543	269.863	7150.83	5735.18	2352.08	-5331.68	40.3772463	-104.8538424	0.00		
14230.00†	91.543	269.863	7148.14	5832.28	2351.84	-5431.64	40.3772476	-104.8542012	0.00		
14330.00†	91.543	269.863	7145.45	5929.39	2351.60	-5531.61	40.3772490	-104.8545600	0.00		
14346.66†	91.543	269.863	7145.00	5945.57	2351.56	-5548.26	40.3772492	-104.8546198	0.00	Niobrara A	
14430.00†	91.543	269.863	7142.76	6026.49	2351.36	-5631.57	40.3772503	-104.8549188	0.00		
14530.00†	91.543	269.863	7140.06	6123.60	2351.12	-5731.53	40.3772516	-104.8552776	0.00		
14630.00†	91.543	269.863	7137.37	6220.71	2350.88	-5831.50	40.3772530	-104.8556364	0.00		
14730.00†	91.543	269.863	7134.68	6317.81	2350.64	-5931.46	40.3772543	-104.8559951	0.00		
14830.00†	91.543	269.863	7131.99	6414.92	2350.40	-6031.42	40.3772557	-104.8563539	0.00		
14930.00†	91.543	269.863	7129.30	6512.03	2350.16	-6131.39	40.3772570	-104.8567127	0.00		
15030.00†	91.543	269.863	7126.60	6609.13	2349.92	-6231.35	40.3772583	-104.8570715	0.00		
15130.00†	91.543	269.863	7123.91	6706.24	2349.68	-6331.31	40.3772597	-104.8574303	0.00		
15230.00†	91.543	269.863	7121.22	6803.34	2349.44	-6431.28	40.3772610	-104.8577891	0.00		
15330.00†	91.543	269.863	7118.53	6900.45	2349.20	-6531.24	40.3772623	-104.8581478	0.00		
15430.00†	91.543	269.863	7115.83	6997.56	2348.96	-6631.20	40.3772636	-104.8585066	0.00		
15530.00†	91.543	269.863	7113.14	7094.66	2348.73	-6731.17	40.3772650	-104.8588654	0.00		
15609.55†	91.543	269.863	7111.00	7171.91	2348.53	-6810.69	40.3772660	-104.8591508	0.00	Sharon Springs	
15630.00†	91.543	269.863	7110.45	7191.77	2348.49	-6831.13	40.3772663	-104.8592242	0.00		
15730.00†	91.543	269.863	7107.76	7288.87	2348.25	-6931.10	40.3772676	-104.8595830	0.00		
15830.00†	91.543	269.863	7105.06	7385.98	2348.01	-7031.06	40.3772689	-104.8599418	0.00		
15930.00†	91.543	269.863	7102.37	7483.09	2347.77	-7131.02	40.3772703	-104.8603005	0.00		
16030.00†	91.543	269.863	7099.68	7580.19	2347.53	-7230.99	40.3772716	-104.8606593	0.00		
16130.00†	91.543	269.863	7096.99	7677.30	2347.29	-7330.95	40.3772729	-104.8610181	0.00		
16230.00†	91.543	269.863	7094.30	7774.41	2347.05	-7430.91	40.3772742	-104.8613769	0.00		



Planned Wellpath Report

BOOTH STATE 01N (REV-A.0) PWP
Page 6 of 8



REFERENCE WELLPATH IDENTIFICATION			
Operator	PDC ENERGY INC	Well	BOOTH STATE 01N
Field	WELD COUNTY (NAD83/GRID)	API/Legal	
Facility	SEC.25-T05N-R67W	Wellbore	BOOTH STATE 01N PWB
Slot	SLOT#01 BOOTH STATE 01N (2588'FNL & 752'FEL,SEC.25)		

WELLPATH DATA (204 stations) † = interpolated, ‡ = extrapolated station										
MD [ft]	Inclination [°]	Azimuth [°]	TVD [ft]	Vert Sect [ft]	North [ft]	East [ft]	Latitude	Longitude	DLS [°/100ft]	Comments
16330.00†	91.543	269.863	7091.60	7871.51	2346.81	-7530.88	40.3772755	-104.8617357	0.00	
16430.00†	91.543	269.863	7088.91	7968.62	2346.57	-7630.84	40.3772769	-104.8620945	0.00	
16530.00†	91.543	269.863	7086.22	8065.72	2346.33	-7730.80	40.3772782	-104.8624532	0.00	
16630.00†	91.543	269.863	7083.53	8162.83	2346.09	-7830.77	40.3772795	-104.8628120	0.00	
16730.00†	91.543	269.863	7080.83	8259.94	2345.85	-7930.73	40.3772808	-104.8631708	0.00	
16830.00†	91.543	269.863	7078.14	8357.04	2345.61	-8030.69	40.3772821	-104.8635296	0.00	
16930.00†	91.543	269.863	7075.45	8454.15	2345.37	-8130.66	40.3772834	-104.8638884	0.00	
17030.00†	91.543	269.863	7072.76	8551.25	2345.13	-8230.62	40.3772847	-104.8642472	0.00	
17130.00†	91.543	269.863	7070.07	8648.36	2344.89	-8330.58	40.3772860	-104.8646059	0.00	
17230.00†	91.543	269.863	7067.37	8745.47	2344.65	-8430.55	40.3772874	-104.8649647	0.00	
17330.00†	91.543	269.863	7064.68	8842.57	2344.41	-8530.51	40.3772887	-104.8653235	0.00	
17430.00†	91.543	269.863	7061.99	8939.68	2344.18	-8630.47	40.3772900	-104.8656823	0.00	
17530.00†	91.543	269.863	7059.30	9036.79	2343.94	-8730.44	40.3772913	-104.8660411	0.00	
17630.00†	91.543	269.863	7056.60	9133.89	2343.70	-8830.40	40.3772926	-104.8663999	0.00	
17730.00†	91.543	269.863	7053.91	9231.00	2343.46	-8930.36	40.3772939	-104.8667586	0.00	
17830.00†	91.543	269.863	7051.22	9328.10	2343.22	-9030.33	40.3772952	-104.8671174	0.00	
17930.00†	91.543	269.863	7048.53	9425.21	2342.98	-9130.29	40.3772965	-104.8674762	0.00	
18030.00†	91.543	269.863	7045.84	9522.32	2342.74	-9230.25	40.3772978	-104.8678350	0.00	
18130.00†	91.543	269.863	7043.14	9619.42	2342.50	-9330.22	40.3772991	-104.8681938	0.00	
18230.00†	91.543	269.863	7040.45	9716.53	2342.26	-9430.18	40.3773004	-104.8685526	0.00	
18330.00†	91.543	269.863	7037.76	9813.63	2342.02	-9530.15	40.3773017	-104.8689113	0.00	
18430.00†	91.543	269.863	7035.07	9910.74	2341.78	-9630.11	40.3773030	-104.8692701	0.00	
18432.48	91.543	269.863	7035.00 ²	9913.14	2341.77	-9632.58	40.3773030	-104.8692790	0.00	BPZ
18482.48	91.543	269.863	7033.65	9961.70	2341.65	-9682.56	40.3773036	-104.8694584	0.00	BHL (223'FNL & 100'FWL,SEC.26)



Planned Wellpath Report

BOOTH STATE 01N (REV-A.0) PWP
Page 7 of 8



REFERENCE WELLPATH IDENTIFICATION			
Operator	PDC ENERGY INC	Well	BOOTH STATE 01N
Field	WELD COUNTY (NAD83/GRID)	API/Legal	
Facility	SEC.25-T05N-R67W	Wellbore	BOOTH STATE 01N PWB
Slot	SLOT#01 BOOTH STATE 01N (2588'FNL & 752'FEL,SEC.25)		

TARGETS									
Name	MD [ft]	TVD [ft]	North [ft]	East [ft]	Grid East [US ft]	Grid North [US ft]	Latitude	Longitude	Shape
Sec.25-5N-67W	N/A	5.00	-135.16	0.18	3185352.01	1378440.06	40.3703110	-104.8347730	polygon
	2D Polygon: dimensions not calculated								
Sec.26-5N-67W	N/A	5.00	-135.16	0.18	3185352.01	1378440.06	40.3703110	-104.8347730	polygon
	2D Polygon: dimensions not calculated								
BOOTH STATE 01N BHL Rev-1 (223'FNL & 100'FWL,SEC.26)	N/A	7035.00	2341.42	-9682.45	3175669.79	1380916.54	40.3773030	-104.8694580	point
2) BOOTH STATE 01N BPZ Rev-1 (223'FNL & 150'FWL,SEC.26)	18432.48	7035.00	2341.77	-9632.58	3175719.66	1380916.89	40.3773030	-104.8692790	point
1) BOOTH STATE 01N LP Rev-1 (223'FNL & 150'FEL,SEC.25)	8217.94	7310.00	2366.24	578.23	3185930.03	1380941.35	40.3771650	-104.8326310	point

SURVEY PROGRAM - Ref Wellbore: BOOTH STATE 01N PWB Ref Wellpath: BOOTH STATE 01N (REV-A.0) PWP				
Start MD [ft]	End MD [ft]	Positional Uncertainty Model	Log Name/Comment	Wellbore
30.00	2000.00	OWSG MWD rev2 - Standard		BOOTH STATE 01N PWB
2000.00	18666.26	OWSG MWD rev2 (MS+IFR1)		BOOTH STATE 01N PWB



Planned Wellpath Report

BOOTH STATE 01N (REV-A.0) PWP
Page 8 of 8



REFERENCE WELLPATH IDENTIFICATION			
Operator	PDC ENERGY INC	Well	BOOTH STATE 01N
Field	WELD COUNTY (NAD83/GRID)	API/Legal	
Facility	SEC.25-T05N-R67W	Wellbore	BOOTH STATE 01N PWB
Slot	SLOT#01 BOOTH STATE 01N (2588'FNL & 752'FEL,SEC.25)		

WELLPATH COMMENTS				
MD [ft]	Inclination [°]	Azimuth [°]	TVD [ft]	Comment
904.48	12.090	30.153	900.00	PIERRE
1027.80	14.556	30.153	1020.00	U PAWNEE
1543.04	23.012	30.153	1505.00	U PAWNEE BASE
4069.05	23.012	30.153	3830.00	Parkman Sandstone
4630.75	23.012	30.153	4347.00	Sussex Sandstone
5251.12	23.012	30.153	4918.00	Shannon Sandstone
7664.01	45.612	291.597	7111.00	Sharon Springs
7714.45	49.622	288.713	7145.00	Niobrara A
7955.92	69.482	278.366	7267.00	Niobrara B
9815.12	91.543	269.863	7267.00	Niobrara B
14346.66	91.543	269.863	7145.00	Niobrara A
15609.55	91.543	269.863	7111.00	Sharon Springs

DESIGN COMMENTS				
MD [ft]	Inclination [°]	Azimuth [°]	TVD [ft]	Comment
30.00	0.000	30.153	30.00	Tie On
300.00	0.000	30.153	300.00	End of Tangent
1450.60	23.012	30.153	1419.91	Build (XS)
7075.50	23.012	30.153	6597.20	End of Tangent (XS)
8217.94	91.543	269.863	7310.00	TPZ
18432.48	91.543	269.863	7035.00	BPZ
18482.48	91.543	269.863	7033.65	BHL (223'FNL & 100'FWL,SEC.26)



Closest Approach Clearance Summary Report

BOOTH STATE 01N (REV-A.0) PWP - SPE WPTS Stop Drilling HSE Risk (2017)
Page 1 of 5



REFERENCE WELLPATH IDENTIFICATION			
Operator	PDC ENERGY INC	Well	BOOTH STATE 01N
Field	WELD COUNTY (NAD83/GRID)	API/Legal	
Facility	SEC.25-T05N-R67W	Wellbore	BOOTH STATE 01N PWB
Slot	SLOT#01 BOOTH STATE 01N (2588'FNL & 752'FEL,SEC.25)		

REPORT SETUP INFORMATION			
Projection System	NAD83 / Lambert Colorado SP, Northern Zone (501), US feet	Software System	WellArchitect® 6.0
North Reference	Grid	User	Guenaler
Scale	0.999959	Report Generated	5/25/2024 at 9:50:49 PM
Convergence at slot	0.43° East	Database	WA_Denver

WELLPATH LOCATION						
	Local coordinates		Grid coordinates		Geographic coordinates	
	North[ft]	East[ft]	Easting[US ft]	Northing[US ft]	Latitude	Longitude
Slot Location	0.00	0.00	3185351.83	1378575.22	40.3706820°	-104.8347700°
Facility Reference Pt			3185351.83	1378575.22	40.3706820°	-104.8347700°
Field Reference Pt			3296400.32	1413291.61	40.4630000°	-104.4347500°

WELLPATH DATUM			
Calculation method	Minimum Curvature	(4985'GL+30'KB = 5015'RKB) (RKB) to Facility Vertical Datum	5015.00ft
Horizontal Reference Pt	Slot	(4985'GL+30'KB = 5015'RKB) (RKB) to Mean Sea Level	5015.00ft
Vertical Reference Pt	(4985'GL+30'KB = 5015'RKB) (RKB)	(4985'GL+30'KB = 5015'RKB) (RKB) to Ground Level at Slot (SLOT#01 BOOTH STATE 01N (2588'FNL & 752'FEL,SEC.25))	5015.00ft
MD Reference Pt	(4985'GL+30'KB = 5015'RKB) (RKB)		
Field Vertical Reference	Mean Sea Level		

POSITIONAL UNCERTAINTY CALCULATION SETTINGS					
Ellipse Confidence Limit	3.50 Std Dev	Ellipse Start MD	30.00ft	Surface Position Uncertainty	included
Declination	7.75° East of TN	Dip Angle	66.50°	Mag Field Strength	51619 nT
Slot Surface Uncertainty @1SD		Horizontal	0.100ft	Vertical	1.000ft
Facility Surface Uncertainty @1SD		Horizontal	8.200ft	Vertical	3.000ft
Positional Uncertainty values in the WELLPATH DATA table are the projection of the ellipsoid of uncertainty onto the vertical and horizontal planes					



Closest Approach Clearance Summary Report

BOOTH STATE 01N (REV-A.0) PWP - SPE WPTS Stop Drilling HSE Risk (2017)
Page 2 of 5



REFERENCE WELLPATH IDENTIFICATION			
Operator	PDC ENERGY INC	Well	BOOTH STATE 01N
Field	WELD COUNTY (NAD83/GRID)	API/Legal	
Facility	SEC.25-T05N-R67W	Wellbore	BOOTH STATE 01N PWB
Slot	SLOT#01 BOOTH STATE 01N (2588'FNL & 752'FEL,SEC.25)		

PROXIMITY-SCAN RULE			
Rule Name	SPE WPTS Stop Drilling HSE Risk (2017)	Rule Based On	Ratio
Plane of Rule	Closest Approach	Threshold Value	1.00
Include Casing & Hole Size	yes	Apply Cone of Safety	no

SURVEY PROGRAM - Ref Wellbore: BOOTH STATE 01N PWB Ref Wellpath: BOOTH STATE 01N (REV-A.0) PWP				
Start MD [ft]	End MD [ft]	Positional Uncertainty Model	Log Name/Comment	Wellbore
30.00	2000.00	OWSG MWD rev2 - Standard		BOOTH STATE 01N PWB
2000.00	18666.26	OWSG MWD rev2 (MS+IFR1)		BOOTH STATE 01N PWB



Closest Approach Clearance Summary Report

BOOTH STATE 01N (REV-A.0) PWP - SPE WPTS Stop Drilling HSE Risk (2017)
Page 3 of 5



REFERENCE WELLPATH IDENTIFICATION			
Operator	PDC ENERGY INC	Well	BOOTH STATE 01N
Field	WELD COUNTY (NAD83/GRID)	API/Legal	
Facility	SEC.25-T05N-R67W	Wellbore	BOOTH STATE 01N PWB
Slot	SLOT#01 BOOTH STATE 01N (2588'FNL & 752'FEL,SEC.25)		

CALCULATION RANGE & CUTOFF		
From: 30.00ft MD	To: 18482.48ft MD	C-C Cutoff: (none)

OFFSET WELL CLEARANCE SUMMARY (54 Offset Wellpaths selected) Ratios are calculated in Closest Approach plane												
Offset Facility	Offset Slot	Offset Well	Offset Wellbore	Offset Wellpath	Wellbore Status	C-C Clearance Distance			Rule Separation Ratio			
						Ref MD [ft]	Min C-C Clear Dist [ft]	Diverging from MD [ft]	Ref MD of Min Ratio [ft]	Min Ratio	Min Ratio Dvrg from [ft]	Rule Status
SEC.25-T05N-R67W	SLOT#23 BOOTH N #25-4 (05-123-15478) SI	BOOTH N #25-4 (05-123-15478) SI	BOOTH N #25-4 AWB	BOOTH N #25-4 AWP (SI)	Producing / injecting	12859.64	246.69	12859.64	12859.42	0.03	12859.42	FAIL
SEC.26-T05N-R67W	SLOT#01 BLEHM N #26-03 (05-123-19438) SI	BLEHM N #26-03	BLEHM N #26-03 AWB	BLEHM N #26-03 AWP (SI)	Producing / injecting	16782.13	242.81	16782.13	16781.90	0.03	16781.90	FAIL
SEC.25-T05N-R67W	SLOT#17 BOOTH #N 25-3 (05-123-15479) SI	BOOTH #N 25-3 (05-123-15479) SI	BOOTH #N 25-3 AWB	BOOTH #N 25-3 AWP (SI)	Producing / injecting	11454.28	255.38	11454.28	11454.04	0.03	11454.04	FAIL
SEC.26-T05N-R67W	SLOT#07 VETTER #26-12 (05-123-19413) PA	VETTER #26-12	VETTER #26-12 AWB	VETTER #26-12 AWP	Drilling	15110.87	422.75	15110.87	15110.20	0.05	15110.20	FAIL
SEC.26-T05N-R67W	SLOT#08 BLEHM #3 (05-123-11103) TA	BLEHM #3	BLEHM #3 AWB	BLEHM #3 AWP	Drilling	17911.44	434.72	17911.44	17910.72	0.05	17910.72	FAIL
SEC.25-T05N-R67W	SLOT#22 BOOTH #25-12 (05-123-17336) PA	BOOTH #25-12 (05-123-17336) PA	BOOTH #25-12 AWB	BOOTH #25-12 AWP (PA)	Abandoned	10169.57	600.49	10169.57	10168.25	0.07	10168.25	FAIL
SEC.25-T05N-R67W	SLOT#24 BOOTH N #25-19 (05-123-25620) SI	BOOTH N #25-19 (05-123-25620) SI	BOOTH N #25-19 AWB	BOOTH N #25-19 AWP (SI)	Producing / injecting	12191.24	925.02	12191.24	12188.07	0.10	12188.07	FAIL
SEC.26-T05N-R67W	SLOT#02 BLEHM N #26-19 (05-123-23361) SI	BLEHM N #26-19	BLEHM N #26-19 AWB	BLEHM N #26-19 AWP	Producing / injecting	17215.98	911.58	17215.98	17212.85	0.10	17212.85	FAIL
SEC.26-T05N-R67W	SLOT#06 BLEHM #26-17 (05-123-23036) TA	BLEHM #26-17	BLEHM #26-17 AWB	BLEHM #26-17 AWP	Abandoned	14682.03	970.42	14682.03	14678.52	0.11	14678.52	FAIL
SEC.25-T05N-R67W	SLOT#32 BOOTH #25-15 (05-123-28106) PR	BOOTH #25-15 (05-123-28106) PR	BOOTH #25-15 AWB	BOOTH #25-15 AWP (PR)	Producing / injecting	9522.11	1090.49	9522.11	9517.74	0.12	9517.74	FAIL
SEC.25-T05N-R67W	SLOT#28 BOOTH #25-14 (05-123-17369) PA	BOOTH #25-14 (05-123-17369) PA	BOOTH #25-14 AWB	BOOTH #25-14 AWP (PA)	Abandoned	1655.07	345.42	8930.00	2101.68	0.16	8930.00	FAIL
SEC.26-T05N-R67W	SLOT#14 VETTER #26-13 (05-123-19998) PA	VETTER #26-13	VETTER #26-13 AWB	VETTER #26-13 AWP	Abandoned	15442.58	1568.67	15442.58	15433.39	0.18	15433.39	FAIL
SEC.25-T05N-R67W	SLOT#33 BOOTH #N 25-5 (05-123-18082) SI	BOOTH #N 25-5 (05-123-18082) SI	BOOTH #N 25-5 AWB	BOOTH #N 25-5 AWP (SI)	Producing / injecting	12826.53	1588.30	12826.53	12817.13	0.18	12817.13	FAIL
SEC.26-T05N-R67W	SLOT#15 BLEHM N #26-5 (05-123-19492) PA	BLEHM N #26-5	BLEHM N #26-5 AWB	BLEHM N #26-5 AWP	Abandoned	17735.72	1576.74	17735.72	17726.37	0.18	17726.37	FAIL
SEC.25-T05N-R67W	SLOT#29 BOOTH #N 25-6 (05-123-18083) SI	BOOTH #N 25-6 (05-123-18083) SI	BOOTH #N 25-6 AWB	BOOTH #N 25-6 AWP (SI)	Producing / injecting	11446.51	1641.56	11446.51	11436.51	0.19	11436.51	FAIL
SEC.26-T05N-R67W	SLOT#11 BLEHM N #26-8 (05-123-23344) SI	BLEHM N #26-8	BLEHM N #26-8 AWB	BLEHM N #26-8 AWP	Producing / injecting	14101.67	1663.43	14101.67	14091.34	0.19	14091.34	FAIL
SEC.26-T05N-R67W	SLOT#12 BLEHM #2 (05-123-11006) PA	BLEHM #2	BLEHM #2 AWB	BLEHM #2 AWP	Drilling	16605.23	1794.31	16605.23	16593.18	0.21	16593.18	FAIL
SEC.25-T05N-R67W	SLOT#21 BOOTH N #25-11 (05-123-22680) PA	BOOTH N #25-11 (05-123-22680) PA	BOOTH N #25-11 AWB	BOOTH N #25-11 AWP (PA)	Abandoned	30.00	2631.58	11344.87	11344.87	0.33	11344.87	FAIL
SEC.26-T05N-R67W	SLOT#03 Booth N #25-32D (05-123-31660) PR	Booth N #25-32D	Booth N #25-32D AWB	Booth N #25-32D AWP (PR)	Producing / injecting	13205.44	2229.64	13205.44	13301.71	0.34	13301.71	FAIL
SEC.25-T05N-R67W	SLOT#20 BOOTH N #25-9 (05-123-21924) PA	BOOTH N #25-9 (05-123-21924) PA	BOOTH N #25-9 AWB	BOOTH N #25-9 AWP (PA)	Abandoned	30.00	652.42	8630.00	8605.21	0.34	8605.21	FAIL
SEC.26-T05N-R67W	SLOT#10 BOOTH #13-26 (05-123-17941) TA	BOOTH #13-26	BOOTH #13-26 AWB	BOOTH #13-26 AWP	Abandoned	17707.31	2979.94	17707.31	17673.69	0.35	17673.69	FAIL
SEC.25-T05N-R67W	SLOT#26 BOOTH N #25-10 (05-123-21925) PA	BOOTH N #25-10 (05-123-21925) PA	BOOTH N #25-10 AWB	BOOTH N #25-10 AWP (PA)	Abandoned	30.00	1486.20	10030.00	10010.27	0.36	10010.27	FAIL
SEC.25-T05N-R67W	SLOT#27 BOOTH N #25-12 (05-123-22681) PA	BOOTH N #25-12 (05-123-22681) PA	BOOTH N #25-12 AWB	BOOTH N #25-12 AWP (PA)	Abandoned	12811.41	3237.12	12811.41	12772.05	0.37	12772.05	FAIL
SEC.26-T05N-R67W	SLOT#09 BOOTH #33-26 (05-123-18228) PA	BOOTH #33-26	BOOTH #33-26 AWB	BOOTH #33-26 AWP	Abandoned	15100.77	3307.34	15100.77	15059.64	0.38	15059.64	FAIL
SEC.25-T05N-R67W	SLOT#19 BOOTH N #25-23 (05-123-23167) PA	BOOTH N #25-23 (05-123-23167) PA	BOOTH N #25-23 AWB	BOOTH N #25-23 AWP (PA)	Abandoned	130.00	1298.88	9230.00	9163.17	0.41	9163.17	FAIL



Closest Approach Clearance Summary Report

BOOTH STATE 01N (REV-A.0) PWP - SPE WPTS Stop Drilling HSE Risk (2017)
Page 4 of 5



REFERENCE WELLPATH IDENTIFICATION			
Operator	PDC ENERGY INC	Well	BOOTH STATE 01N
Field	WELD COUNTY (NAD83/GRID)	API/Legal	
Facility	SEC.25-T05N-R67W	Wellbore	BOOTH STATE 01N PWB
Slot	SLOT#01 BOOTH STATE 01N (2588'FNL & 752'FEL,SEC.25)		

CALCULATION RANGE & CUTOFF		
From: 30.00ft MD	To: 18482.48ft MD	C-C Cutoff: (none)

OFFSET WELL CLEARANCE SUMMARY (54 Offset Wellpaths selected) Ratios are calculated in Closest Approach plane												
Offset Facility	Offset Slot	Offset Well	Offset Wellbore	Offset Wellpath	Wellbore Status	C-C Clearance Distance			Rule Separation Ratio			
						Ref MD [ft]	Min C-C Clear Dist [ft]	Diverging from MD [ft]	Ref MD of Min Ratio [ft]	Min Ratio	Min Ratio Dvrg from [ft]	Rule Status
SEC.25-T05N-R67W	SLOT#13 BOOTH N #25-25 (05-123-22706) PA	BOOTH N #25-25 (05-123-22706) PA	BOOTH N #25-25 AWB	BOOTH N #25-25 AWP (PA)	Abandoned	130.00	3526.82	12030.00	12021.91	0.42	12021.91	FAIL
SEC.25-T05N-R67W	SLOT#15 BOOTH N #25-13 (05-123-22708) TA	BOOTH N #25-13 (05-123-22708) TA	BOOTH N #25-13 AWB	BOOTH N #25-13 AWP (TA)	Abandoned	130.00	3499.94	12030.00	11992.32	0.42	11992.32	FAIL
SEC.26-T05N-R67W	SLOT#17 BLEHM #1 (05-123-10692) TA	BLEHM #1	BLEHM #1 AWB	BLEHM #1 AWP	Abandoned	17346.34	3797.93	17346.34	17291.67	0.44	17291.67	FAIL
SEC.25-T05N-R67W	SLOT#34 BOOTH N #25-15 (05-123-21926) PA	BOOTH N #25-15 (05-123-21926) PA	BOOTH N #25-15 AWB	BOOTH N #25-15 AWP (PA)	Abandoned	130.00	2214.92	10030.00	9933.99	0.48	9933.99	FAIL
SEC.25-T05N-R67W	SLOT#30 BOOTH N #25-16 (05-123-21927) PA	BOOTH N #25-16 (05-123-21927) PA	BOOTH N #25-16 AWB	BOOTH N #25-16 AWP (PA)	Abandoned	130.00	2042.77	8830.00	8737.84	0.50	8737.84	FAIL
SEC.26-T05N-R67W	SLOT#16 BOOTH #34-26 (05-123-18230) PA	BOOTH #34-26	BOOTH #34-26 AWB	BOOTH #34-26 AWB	Abandoned	15286.97	4633.26	15286.97	15205.91	0.54	15205.91	FAIL
SEC.25-T05N-R67W	SLOT#02 BOOTH STATE 02N (2670'FSL & 752'FEL,SEC.25)	BOOTH STATE 02N	BOOTH STATE 02N PWB	BOOTH STATE 02N (REV-A.0) PWP	Planned	30.00	14.94	300.00	18476.26	1.35	18476.26	PASS
SEC.25-T05N-R67W	SLOT#31 BOOTH #25-32 (05-123-19894) PA	BOOTH #25-32 (05-123-19894) PA	BOOTH #25-32 AWB	BOOTH #25-32 AWP (PA)	Abandoned	1306.46	1297.23	9838.19	9838.19	1.81	9838.19	PASS
SEC.26-T05N-R67W	SLOT#05 BLEHM N #26-1 (05-123-22113) PA Gyro Need Survey	BLEHM N #26-1	BLEHM N #26-1 AWB	BLEHM N #26-1 AWP	Abandoned	13901.07	325.54	13901.07	13899.60	2.12	13899.60	PASS
SEC.25-T05N-R67W	SLOT#03 BOOTH STATE 03NA (2655'FSL & 752'FEL,SEC.25)	BOOTH STATE 03NA	BOOTH STATE 03NA PWB	BOOTH STATE 03NA (REV-A.0) PWP	Planned	30.00	29.87	300.00	18477.74	2.74	18477.74	PASS
SEC.25-T05N-R67W	SLOT#04 BOOTH STATE 04C (2640'FSL & 752'FEL,SEC.25)	BOOTH STATE 04C	BOOTH STATE 04C PWB	BOOTH STATE 04C (REV-A.0) PWP	Planned	30.00	45.18	300.00	18477.70	4.07	18477.70	PASS
SEC.25-T05N-R67W	SLOT#05 BOOTH STATE 05N (2625'FSL & 752'FEL,SEC.25)	BOOTH STATE 05N	BOOTH STATE 05N PWB	BOOTH STATE 05N (REV-A.0) PWP	Planned	30.00	60.11	300.00	18482.48	5.40	18482.48	PASS
SEC.25-T05N-R67W	SLOT#06 BOOTH STATE 06N (2610'FSL & 752'FEL,SEC.25)	BOOTH STATE 06N	BOOTH STATE 06N PWB	BOOTH STATE 06N (REV-A.0) PWP	Planned	30.00	75.05	300.00	18482.48	6.76	18482.48	PASS
SEC.25-T05N-R67W	SLOT#16 BOOTH #25-11 (05-123-16856) PA	BOOTH #25-11 (05-123-16856) PA	BOOTH #25-11 AWB	BOOTH #25-11 AWP (PA)	Abandoned	8872.93	505.38	8872.93	8896.34	7.31	8896.34	PASS
SEC.25-T05N-R67W	SLOT#25 Booth N #25-31D (05-123-31514) SI	Booth N #25-31D (05-123-31514) SI	Booth N #25-31D AWB	Booth N #25-31D AWP (SI)	Producing / injecting	13450.64	1115.45	13450.64	13513.98	8.06	13513.98	PASS
SEC.25-T05N-R67W	SLOT#07 BOOTH STATE 07NA (2595'FSL & 752'FEL,SEC.25)	BOOTH STATE 07NA	BOOTH STATE 07NA PWB	BOOTH STATE 07NA (REV-A.0) PWP	Planned	30.00	89.99	300.00	18482.48	8.13	18482.48	PASS
SEC.25-T05N-R67W	SLOT#08 BOOTH STATE 08C (2580'FSL & 753'FEL,SEC.25)	BOOTH STATE 08C	BOOTH STATE 08C PWB	BOOTH STATE 08C (REV-A.0) PWP	Planned	30.00	104.92	300.00	18482.48	9.47	18482.48	PASS
SEC.25-T05N-R67W	SLOT#09 BOOTH STATE 09N (2565'FSL & 753'FEL,SEC.25)	BOOTH STATE 09N	BOOTH STATE 09N PWB	BOOTH STATE 09N (REV-A.0) PWP	Planned	30.00	120.23	300.00	18482.48	10.82	18482.48	PASS
SEC.25-T05N-R67W	SLOT#18 Booth N #25-18D (05-123-31511) PA	Booth N #25-18D (05-123-31511) PA	Booth N #25-18D AWB	Booth N #25-18D AWP (PA)	Abandoned	10839.80	1131.60	10839.80	10866.13	11.98	10866.13	PASS
SEC.25-T05N-R67W	SLOT#10 BOOTH STATE 10N (2550'FSL & 753'FEL,SEC.25)	BOOTH STATE 10N	BOOTH STATE 10N PWB	BOOTH STATE 10N (REV-A.0) PWP	Planned	30.00	135.16	300.00	18482.48	12.16	18482.48	PASS
SEC.25-T05N-R67W	SLOT#11 BOOTH STATE 11N (2535'FSL & 753'FEL,SEC.25)	BOOTH STATE 11N	BOOTH STATE 11N PWB	BOOTH STATE 11N (REV-A.0) PWP	Planned	30.00	150.10	300.00	18482.48	13.51	18482.48	PASS
SEC.25-T05N-R67W	SLOT#12 BOOTH STATE 12N (2520'FSL & 753'FEL,SEC.25)	BOOTH STATE 12N	BOOTH STATE 12N PWB	BOOTH STATE 12N (REV-A.0) PWP	Planned	30.00	165.04	300.00	18482.48	14.85	18482.48	PASS
SEC.25-T05N-R67W	SLOT#35 Booth N #25-20D (05-123-31645) TA	Booth N #25-20D (05-123-31645) TA	Booth N #25-20D AWB	Booth N #25-20D AWP (TA)	Abandoned	11960.91	2278.34	11960.91	12038.75	18.05	12038.75	PASS
SEC.26-T05N-R67W	SLOT#13 BOOTH #24-26 (05-123-17942) PA	BOOTH #24-26	BOOTH #24-26 AWB	BOOTH #24-26 AWP	Abandoned	16863.98	4570.40	16863.98	17817.09	21.08	17817.09	PASS
SEC.25-T05N-R67W	SLOT#38 Booth N #25-21D (05-123-31648) PA	Booth N #25-21D (05-123-31648) PA	Booth N #25-21D AWB	Booth N #25-21D AWP (PA)	Abandoned	10571.03	2267.98	10571.03	11122.35	24.57	11122.35	PASS



Closest Approach Clearance Summary Report

BOOTH STATE 01N (REV-A.0) PWP - SPE WPTS Stop Drilling HSE Risk (2017)
Page 5 of 5



REFERENCE WELLPATH IDENTIFICATION			
Operator	PDC ENERGY INC	Well	BOOTH STATE 01N
Field	WELD COUNTY (NAD83/GRID)	API/Legal	
Facility	SEC.25-T05N-R67W	Wellbore	BOOTH STATE 01N PWB
Slot	SLOT#01 BOOTH STATE 01N (2588'FNL & 752'FEL,SEC.25)		

CALCULATION RANGE & CUTOFF		
From: 30.00ft MD	To: 18482.48ft MD	C-C Cutoff: (none)

OFFSET WELL CLEARANCE SUMMARY (54 Offset Wellpaths selected) Ratios are calculated in Closest Approach plane												
Offset Facility	Offset Slot	Offset Well	Offset Wellbore	Offset Wellpath	Wellbore Status	C-C Clearance Distance			Rule Separation Ratio			
						Ref MD [ft]	Min C-C Clear Dist [ft]	Diverging from MD [ft]	Ref MD of Min Ratio [ft]	Min Ratio	Min Ratio Dvrg from [ft]	Rule Status
SEC.26-T05N-R67W	SLOT#04 BOOTH N #25-33D (05-123-31666) PR	BOOTH N #25-33D	BOOTH N #25-33D AWB	BOOTH N #25-33D AWP	Drilling	13205.57	3841.23	13205.57	14123.72	26.41	14123.72	PASS
SEC.25-T05N-R67W	SLOT#36 Booth N #25-22D (05-123-31646) PA	Booth N #25-22D (05-123-31646) PA	Booth N #25-22D AWB	Booth N #25-22D AWP (PA)	Abandoned	4166.57	2289.95	9530.00	10469.25	29.24	10469.25	PASS
SEC.25-T05N-R67W	SLOT#37 Booth N #25-24D (05-123-31647) PA	Booth N #25-24D (05-123-31647) PA	Booth N #25-24D AWB	Booth N #25-24D AWP (PA)	Abandoned	306.35	2605.32	10730.00	11990.35	37.51	11990.35	PASS
SEC.25-T05N-R67W	SLOT#14 BOOTH N #25-14 (05-123-22709) PA	BOOTH N #25-14 (05-123-22709) PA	BOOTH N #25-14 AWB	BOOTH N #25-14 AWP (PA)	Abandoned	85.00	3471.36	11230.00	12926.78	40.49	12926.78	PASS