



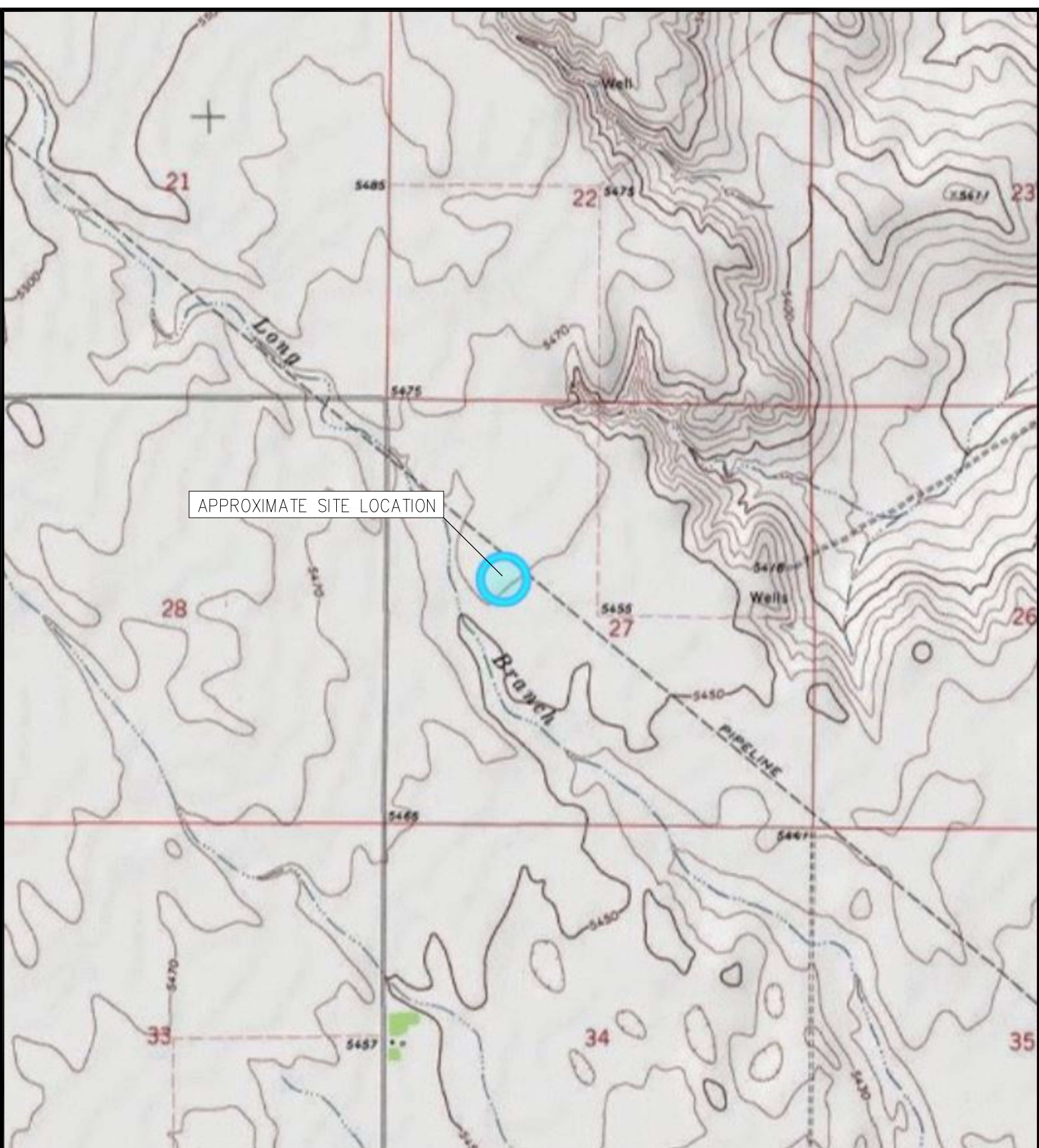
FIGURES

Figure 1: Topographic Site Location Map

Figure 2: Wellhead Soil Sample Location Map

Figure 3: Flowline Soil Sample Location Map

Figure 4: Production Facility Soil Sample Location Map



APPROXIMATE SITE LOCATION

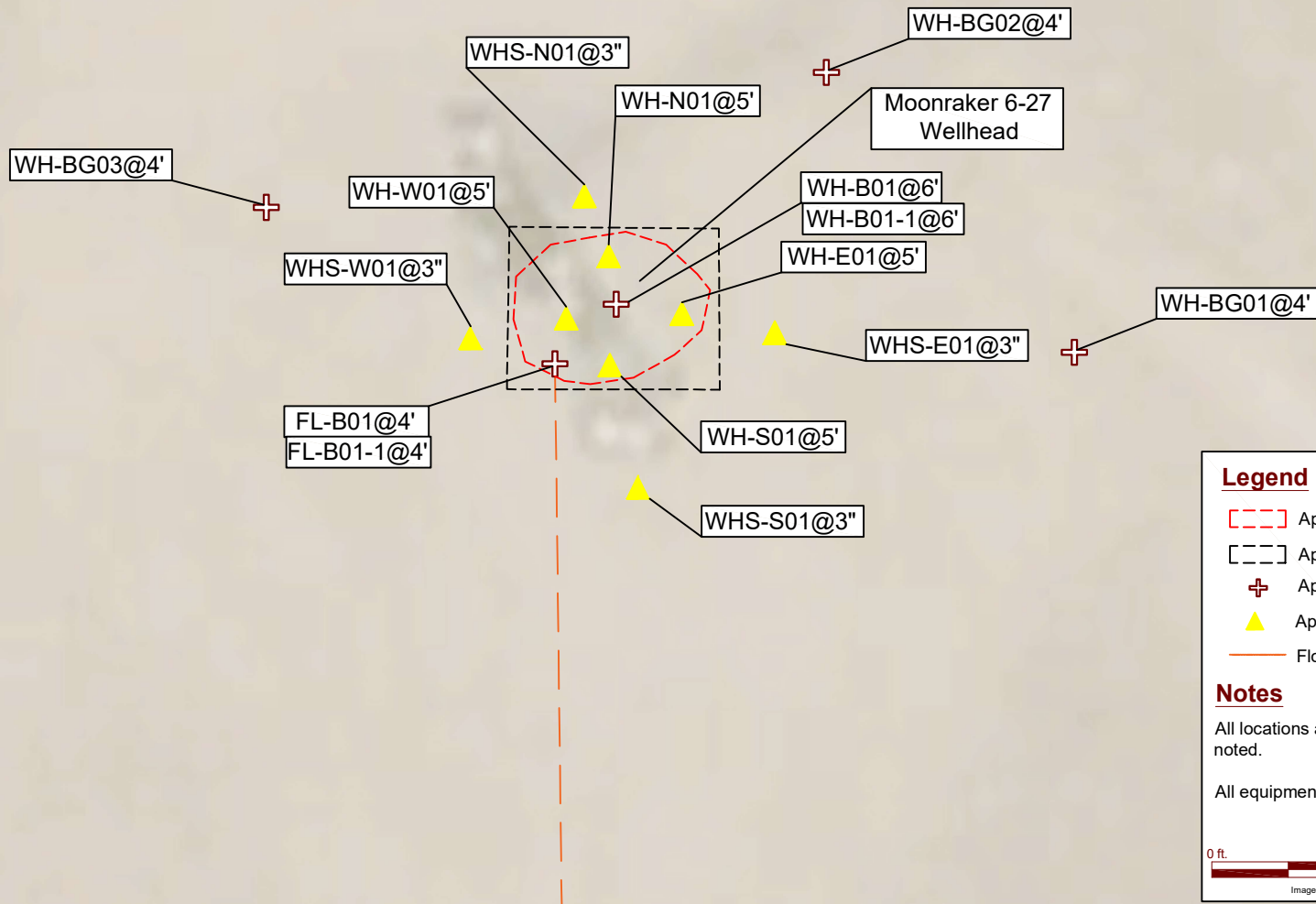
TOPOGRAPHIC SITE LOCATION MAP
 MOONRAKER 6-27
 CLOSURE ASSESSMENT
 39.150730, -103.654100
 SE1/4 NW1/4 SEC.27 T10S R56W 6PM
 LINCOLN COUNTY, COLORADO
 API 05-073-06757
 REMEDIATION # 21623



EAGLE
 ENVIRONMENTAL
 CONSULTING, LLC
 8000 W 44th Ave, Wheat Ridge, CO 80033
 Ph: 303-433-0479 • F: 303-325-5449

SOURCE: USGS 7.5 MINUTE TOPOGRAPHIC MAP
 LAKE, CO QUADRANGLE 2022

FIGURE NO. 1



Legend

- Approximate excavation extent
- Approximate work area
- + Approximate soil sample location
- ▲ Approximate soil screening location
- Flowline location

Notes

All locations are approximate unless otherwise noted.

All equipment has been previously removed.

0 ft. 20 ft. 40 ft.

Image Source: Google Earth 03/2020

DATE: 05/09/2024

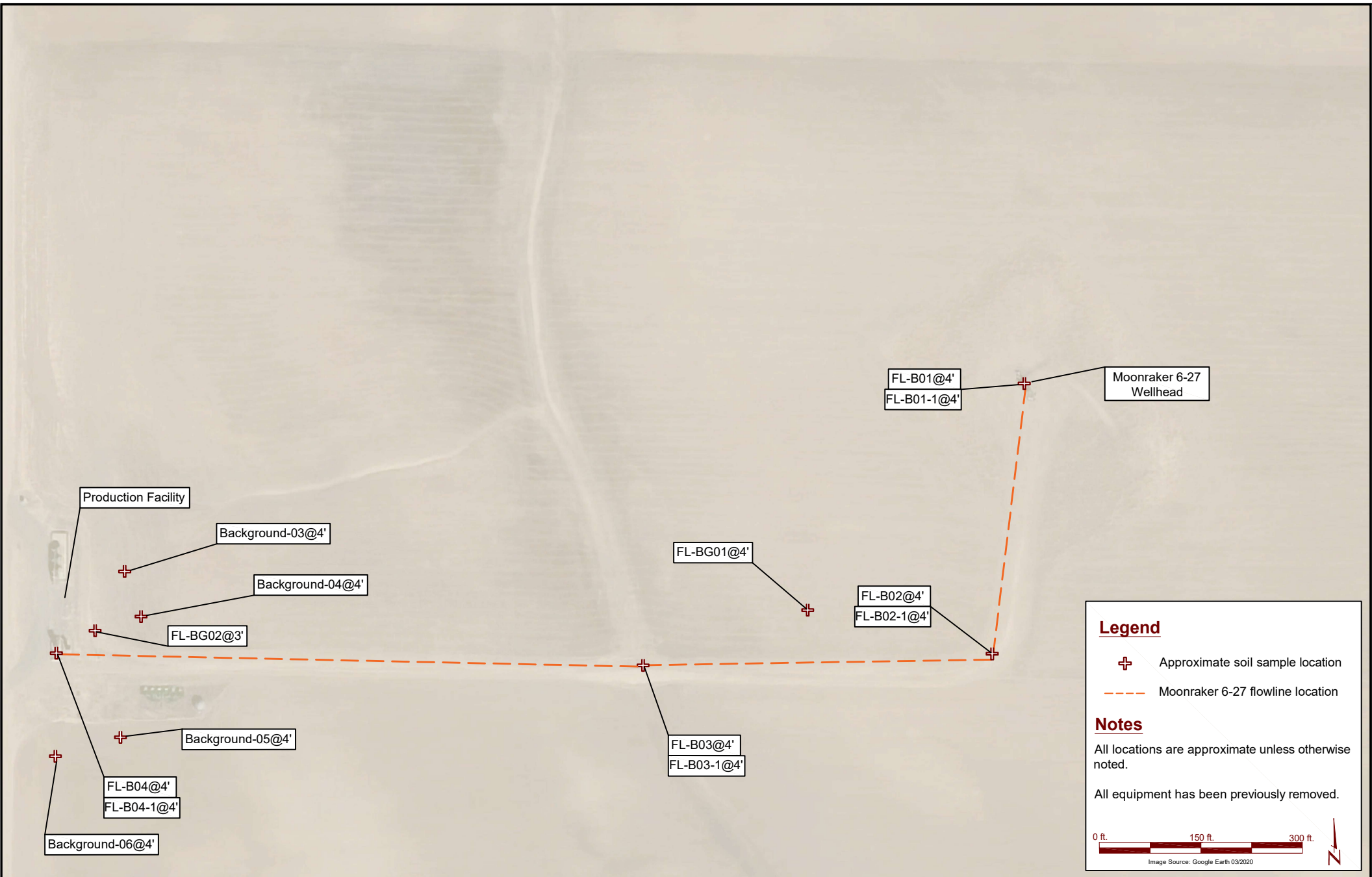
DESIGNED BY: DAC

DRAWN BY: DAC



Murfin Drilling Company, Inc.
Moonraker 6-27
 SENW Sec. 27-T10S-R56W
 Lincoln County, Colorado

Wellhead Soil Sample Location Map



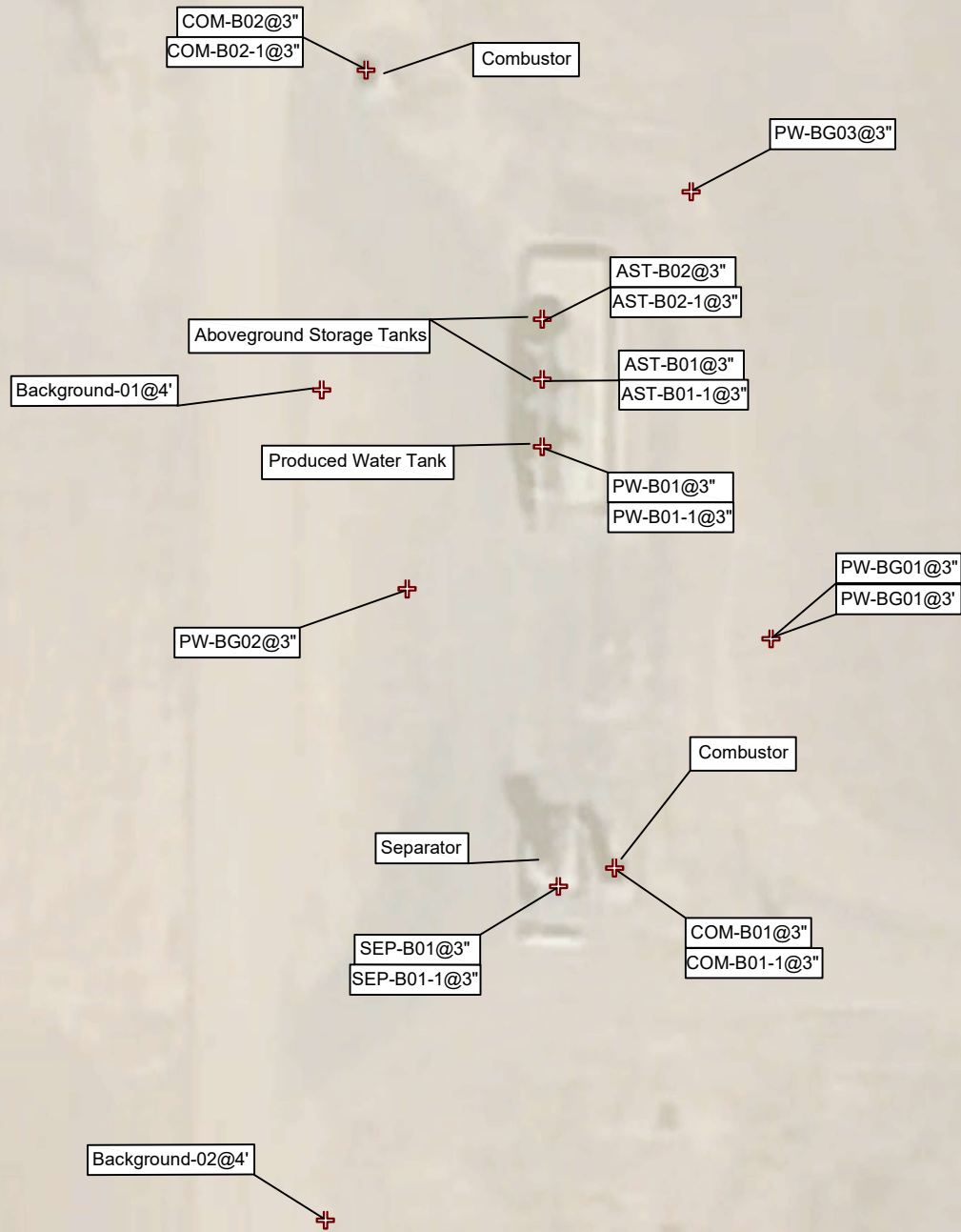
DATE:	11/12/2024
DESIGNED BY:	DAC
DRAWN BY:	DAC



Murfin Drilling Company, Inc.
Moonraker 6-27
 SENW Sec. 27-T10S-R56W
 Lincoln County, Colorado

Flowline Soil Sample
 Location Map

Figure
 3



Legend

⊕ Approximate soil sample location

Notes

All locations are approximate unless otherwise noted.

All equipment has been previously removed.

0 ft. 40 ft. 80 ft.

Image Source: Google Earth 03/2020

DATE: 08/14/2024

DESIGNED BY: DAC

DRAWN BY: DAC



Murfin Drilling Company, Inc.
Moonraker 6-27
 SENW Sec. 27-T10S-R56W
 Lincoln County, Colorado

Production Facility Soil
 Sample Location Map

Figure
 4



TABLES

Table 1: Photoionization Detector Reading Summary

Table 2: Soil Analytical Results Summary

Table 3: Polycyclic Aromatic Hydrocarbons Analytical Results Summary

Table 4: Metals Analytical Results Summary

TABLE 1
PHOTOIONIZATION DETECTOR READING SUMMARY
MOONRAKER 6-27
CLOSURE ASSESSMENT
39.150730, -103.654100
SE1/4 NW1/4 SEC.27 T10S R56W 6PM
LINCOLN COUNTY, COLORADO
API 05-073-06757
REMEDICATION # 21623

Sample Location (Latitude, Longitude)	Date	Approximate Depth	PID Reading (ppm-v)	Lab Submission (Y/N)
AST-B01 @ 3" (39.150095, -103.659111)	02/03/23	0.25'	1.8	Y
AST-B02 @ 3" (39.150150, -103.659113)	02/03/23	0.25'	1.3	Y
PW-B01 @ 3" (39.150048, -103.659111)	02/03/23	0.25'	2.1	Y
SEP-B01 @ 3" (39.149760, -103.659093)	02/03/23	0.25'	1.5	Y
COM-B01 @ 3" (39.149746, -103.659049)	02/03/23	0.25'	0.6	Y
COM-B02 @ 3" (39.150332, -103.569277)	02/03/23	0.25'	1.8	Y
FL-B02 @ 4' (39.149725, -103.656021)	02/03/23	4'	0.6	Y
FL-B03 @ 4' (39.149656, -103.656021)	02/03/23	4'	0.3	Y
FL-B04 @ 4' (39.149748, -103.659138)	02/03/23	4'	1.1	Y
PW-BG01 @ 3" (39.150048, -103.659111)	02/03/23	0.25'	1.6	HOLD
PW-BG01 @ 3' (39.150048, -103.659111)	02/03/23	3'	1.4	HOLD
WH-B01 @ 6' (39.150724, -103.654113)	03/09/23	6'	0.0	Y
WH-N01 @ 5' (39.150737, -103.654116)	03/09/23	5'	0.3	N
WH-S01 @ 5' (39.150706, -103.654114)	03/09/23	5'	0.6	N
WH-E01 @ 5' (39.150722, -103.654094)	03/09/23	5'	0.4	N
WH-W01 @ 5' (39.150719, -103.654128)	03/09/23	5'	1.2	N
WHS-N01 @ 3" (39.150750, -103.654119)	03/09/23	0.25'	2.9	N



TABLE 1
PHOTOIONIZATION DETECTOR READING SUMMARY
MOONRAKER 6-27
CLOSURE ASSESSMENT
39.150730, -103.654100
SE1/4 NW1/4 SEC.27 T10S R56W 6PM
LINCOLN COUNTY, COLORADO
API 05-073-06757
REMEDIATION # 21623

Sample Location (Latitude, Longitude)	Date	Approximate Depth	PID Reading (ppm-v)	Lab Submission (Y/N)
WHS-S01 @ 3" (39.150652, -103.654100)	03/09/23	0.25'	0.6	N
WHS-E01 @ 3" (39.150720, -103.654058)	03/09/23	0.25'	1.6	N
WHS-W01 @ 3" (39.150716, -103.654161)	03/09/23	0.25'	0.7	N
FL-B01 @ 4' (39.150706, -103.654132)	03/09/23	4'	0.6	N
WH-BG01 @ 4' (39.150684, -103.653893)	03/09/23	4'	1.3	HOLD
AST-B01-1 @ 3" (39.150095, -103.659111)	04/23/24	3"	0.4	Y
AST-B02-1 @ 3" (39.150150, -103.659113)	04/23/24	3"	1.1	Y
PW-B01-1 @ 3" (39.150048, -103.659111)	04/23/24	3'	0.8	Y
SEP-B01-1 @ 3" (39.149760, -103.659093)	04/23/24	3"	0.6	Y
COM-B01-1 @ 3" (39.149746, -103.659049)	04/23/24	3"	1.2	Y
COM-B02-1 @ 3" (39.150332, -103.569277)	04/23/24	3"	1.0	Y
WH-B01-1 @ 6' (39.150724, -103.654113)	04/23/24	6'	0.6	Y
FL-B01-1 @ 4' (39.150706, -103.654132)	04/23/24	4'	0.4	Y
FL-B02-1 @ 4' (39.149725, -103.656021)	04/23/24	4'	0.3	Y
FL-B03-1 @ 4' (39.149656, -103.656021)	04/23/24	4'	0.8	Y
FL-B04-1 @ 4' (39.149748, -103.659138)	04/23/24	4'	0.4	Y
WH-BG02 @ 4' (39.150842, -103.654072)	04/23/24	4'	1.1	Y



TABLE 1
PHOTOIONIZATION DETECTOR READING SUMMARY
MOONRAKER 6-27
CLOSURE ASSESSMENT
39.150730, -103.654100
SE1/4 NW1/4 SEC.27 T10S R56W 6PM
LINCOLN COUNTY, COLORADO
API 05-073-06757
REMEDATION # 21623

Sample Location (Latitude, Longitude)	Date	Approximate Depth	PID Reading (ppm-v)	Lab Submission (Y/N)
WH-BG03 @ 4' (39.150773, -103.654274)	04/23/24	4'	0.6	Y
FL-BG01 @ 4' (39.149834, -103.655070)	04/23/24	4'	0.9	Y
FL-BG02 @ 3' (39.149812, -103.658916)	04/23/24	3'	0.3	Y
PW-BG02 @ 3" (39.149944, -103.659230)	04/23/24	3"	0.8	Y
PW-BG03 @ 3" (39.150232, -103.658983)	04/23/24	3"	0.6	Y
Background-01 @ 4' (39.150096, -103.659342)	06/25/24	4'	0.2	Y
Background-02 @ 4' (39.149455, -103.659341)	06/25/24	4'	1.4	Y
FL-B04-1 @ 4' (39.149748, -103.659138)	09/06/24	4'	1.0	Y
Background-03 @ 4' (39.150033, -103.658793)	09/06/24	4'	0.9	Y
Background-04 @ 4' (39.149862, -103.658672)	09/06/24	4'	0.9	Y
Background-05 @ 4' (39.149385, -103.658781)	09/06/24	4'	0.9	Y
Background-06 @ 4' (39.149312, -103.659130)	09/06/24	4'	1.0	Y
(Y/N) = Yes or No ppm-v = parts per million by volume PID = photoionization detector				



TABLE 2
SOIL ANALYTICAL RESULTS SUMMARY
MOONRAKER 6-27
CLOSURE ASSESSMENT
39.150730, -103.654100
SE1/4 NW1/4 SEC.27 T10S R56W 6PM
LINCOLN COUNTY, COLORADO
API 05-073-06757
REMEDIATION # 21623

Sample Location (Latitude, Longitude)	Date	Approximate Depth	PID Reading (ppm-v)	Benzene (mg/kg)	Toluene (mg/kg)	Ethylbenzene (mg/kg)	Total Xylenes (mg/kg)	TPH-GRO (mg/kg)	TPH-DRO (mg/kg)	TPH-RRO (mg/kg)	1,2,4-TMB (mg/kg)	1,3,5-TMB (mg/kg)	Boron (mg/L)	Specific Conductance (mmhos/cm)	pH (pH units)	SAR
CECMC Table 915-1 Residential Soil Screening Levels				1.20	490	5.8	58	500			30	27	2	<4	6-8.3	<6
CECMC Table 915-1 Protection of Groundwater Soil Screening Levels				0.0026	0.69	0.78	9.9	-			0.0081	0.0087	-	-	-	-
AST-B01 @ 3" (39.150095, -103.659111)	02/03/23	0.25'	1.8	<0.00200	<0.00200	<0.00200	<0.00200	<0.200	<25.0	<100	<0.00200	<0.00200	<0.100	0.331	8.14	0.573
AST-B02 @ 3" (39.150150, -103.659113)	02/03/23	0.25'	1.3	<0.00200	<0.00200	<0.00200	<0.00200	<0.200	<25.0	<100	<0.00200	<0.00200	0.137	0.447	8.22	0.751
PW-B01 @ 3" (39.150048, -103.659111)	02/03/23	0.25'	2.1	<0.00200	<0.00200	<0.00200	<0.00200	<0.200	<25.0	<100	<0.00200	<0.00200	<0.0989	0.485	8.33*	5.40
SEP-B01 @ 3" (39.149760, -103.659093)	02/03/23	0.25'	1.5	<0.00200	<0.00200	<0.00200	<0.00200	<0.200	<25.0	<100	<0.00200	<0.00200	0.123	0.300	8.03	0.00
COM-B01 @ 3" (39.149746, -103.659049)	02/03/23	0.25'	0.6	<0.00200	<0.00200	<0.00200	<0.00200	<0.200	<25.0	<100	<0.00200	<0.00200	0.346	0.556	8.12	0.583
COM-B02 @ 3" (39.150332, -103.569277)	02/03/23	0.25'	1.8	<0.00200	<0.00200	<0.00200	<0.00200	<0.200	<25.0	<100	<0.00200	<0.00200	0.255	0.369	7.93	0.450
FL-B02 @ 4" (39.149725, -103.656021)	02/03/23	4'	0.6	<0.00200	<0.00200	<0.00200	<0.00200	<0.200	<25.0	<100	<0.00200	<0.00200	0.466	1.02	8.18	2.90
FL-B03 @ 4" (39.149656, -103.656021)	02/03/23	4'	0.3	<0.00200	<0.00200	<0.00200	<0.00200	<0.200	<25.0	<100	<0.00200	<0.00200	<1.02	0.338	7.76	0.101
FL-B04 @ 4" (39.149748, -103.659138)	02/03/23	4'	1.1	<0.00200	<0.00200	<0.00200	<0.00200	<0.200	<25.0	<100	<0.00200	<0.00200	0.470	0.486	8.09	0.704
WH-B01 @ 6" (39.150724, -103.654113)	03/09/23	6'	0.0	<0.00200	<0.00200	<0.00200	<0.00200	<0.200	35.1	<100	<0.00200	<0.00200	0.445	2.32	8.05	4.64
FL-B01 @ 4" (39.150706, -103.654132)	03/09/23	4'	0.6	<0.00200	<0.00200	<0.00200	<0.00200	<0.200	<25.0	<100	<0.00200	<0.00200	0.192	1.22	8.06	2.53
CECMC = Colorado Energy & Carbon Management Commission				mg/kg = milligrams per kilogram				mg/L = milligrams per liter				mmhos/cm = millimhos per centimeter				
SAR = Sodium Adsorption Ratio				PID = Photoionization Detector				ppm-v = parts per million by volume								
TPH-GRO = Total Petroleum Hydrocarbons - Gasoline Range Organics				1,2,4-TMB = 1,2,4-Trimethylbenzene												
TPH-DRO = Total Petroleum Hydrocarbons - Diesel Range Organics				1,3,5-TMB = 1,3,5-Trimethylbenzene												
TPH-RRO = Total Petroleum Hydrocarbons - Residual Range Organics																
Values presented with a less than symbol (<) did not contain concentrations at or above the laboratory reporting limit.																
Values presented in BOLD* contained concentrations exceeding CECMC Table 915-1 Residential Screening Levels, but are within an acceptable range of analytical variability.																

TABLE 3
POLYCYCLIC AROMATIC HYDROCARBONS ANALYTICAL RESULTS SUMMARY
MOONRAKER 6-27
CLOSURE ASSESSMENT
39.150730, -103.654100
SE1/4 NW1/4 SEC.27 T10S R56W 6PM
LINCOLN COUNTY, COLORADO
API 05-073-06757
REMEDATION # 21623

Sample Location (Latitude, Longitude)	Date	Approximate Depth	PID Reading (ppm-v)	1-Methyl- naphthalene (mg/kg)	2-Methyl- naphthalene (mg/kg)	Acenaphthene (mg/kg)	Anthracene (mg/kg)	Benzo(a)- anthracene (mg/kg)	Benzo(a)- pyrene (mg/kg)	Benzo(b)- fluoranthene (mg/kg)	Benzo(k)- fluoranthene (mg/kg)	Chrysene (mg/kg)	Dibenzo(a,h)- anthracene (mg/kg)	Fluoranthene (mg/kg)	Fluorene (mg/kg)	Indeno(1,2,3- cd)-pyrene (mg/kg)	Naphthalene (mg/kg)	Pyrene (mg/kg)
CECMC Table 915-1 Residential Soil Screening Levels				18	24	360	1,800	1.1	0.11	1.1	11	110	0.11	240	240	1.1	2	180
CECMC Table 915-1 Protection of Groundwater Soil Screening Levels				0.006	0.019	0.55	5.8	0.011	0.24	0.3	2.9	9	0.096	8.9	0.54	0.98	0.0038	1.3
AST-B01 @ 3" (39.150095, -103.659111)	02/03/23	0.25'	1.8	NA	NA	NA	NA	NA	NA	NA	NA	NA	NA	NA	NA	NA	<0.00380	NA
AST-B02 @ 3" (39.150150, -103.659113)	02/03/23	0.25'	1.3	NA	NA	NA	NA	NA	NA	NA	NA	NA	NA	NA	NA	NA	<0.00380	NA
PW-B01 @ 3" (39.150048, -103.659111)	02/03/23	0.25'	2.1	NA	NA	NA	NA	NA	NA	NA	NA	NA	NA	NA	NA	NA	<0.00380	NA
SEP-B01 @ 3" (39.149760, -103.659093)	02/03/23	0.25'	1.5	NA	NA	NA	NA	NA	NA	NA	NA	NA	NA	NA	NA	NA	<0.00380	NA
COM-B01 @ 3" (39.149746, -103.659049)	02/03/23	0.25'	0.6	NA	NA	NA	NA	NA	NA	NA	NA	NA	NA	NA	NA	NA	<0.00380	NA
COM-B02 @ 3" (39.150332, -103.569277)	02/03/23	0.25'	1.8	NA	NA	NA	NA	NA	NA	NA	NA	NA	NA	NA	NA	NA	<0.00380	NA
FL-B02 @ 4" (39.149725, -103.656021)	02/03/23	4'	0.6	NA	NA	NA	NA	NA	NA	NA	NA	NA	NA	NA	NA	NA	<0.00380	NA
FL-B03 @ 4" (39.149656, -103.656021)	02/03/23	4'	0.3	NA	NA	NA	NA	NA	NA	NA	NA	NA	NA	NA	NA	NA	<0.00380	NA
FL-B04 @ 4" (39.149748, -103.659138)	02/03/23	4'	1.1	NA	NA	NA	NA	NA	NA	NA	NA	NA	NA	NA	NA	NA	<0.00380	NA
WH-B01 @ 6" (39.150724, -103.654113)	03/09/23	6'	0.0	NA	NA	NA	NA	NA	NA	NA	NA	NA	NA	NA	NA	NA	<0.00380	NA
FL-B01 @ 4" (39.150706, -103.654132)	03/09/23	4'	0.6	NA	NA	NA	NA	NA	NA	NA	NA	NA	NA	NA	NA	NA	<0.00380	NA
AST-B01-1 @ 3" (39.150095, -103.659111)	04/23/24	3"	0.4	<0.002	<0.002	<0.020	<0.020	<0.005	<0.020	<0.020	<0.020	<0.020	<0.020	<0.020	<0.020	<0.020	<0.002	<0.020
AST-B02-1 @ 3" (39.150150, -103.659113)	04/23/24	3"	1.1	<0.002	<0.002	<0.020	<0.020	<0.005	<0.020	<0.020	<0.020	<0.020	<0.020	<0.020	<0.020	<0.020	<0.002	<0.020
PW-B01-1 @ 3" (39.150048, -103.659111)	04/23/24	3"	0.8	<0.002	<0.002	<0.020	<0.020	<0.005	<0.020	<0.020	<0.020	<0.020	<0.020	<0.020	<0.020	<0.020	<0.002	<0.020
SEP-B01-1 @ 3" (39.149760, -103.659093)	04/23/24	3"	0.6	<0.002	<0.002	<0.020	<0.020	<0.005	<0.020	<0.020	<0.020	<0.020	<0.020	<0.020	<0.020	<0.020	<0.002	<0.020
COM-B01-1 @ 3" (39.149746, -103.659049)	04/23/24	3"	1.2	<0.002	<0.002	<0.020	<0.020	<0.005	<0.020	<0.020	<0.020	<0.020	<0.020	<0.020	<0.020	<0.020	<0.002	<0.020
COM-B02-1 @ 3" (39.150332, -103.569277)	04/23/24	3"	1.0	<0.002	<0.002	<0.020	<0.020	<0.005	<0.020	<0.020	<0.020	<0.020	<0.020	<0.020	<0.020	<0.020	<0.002	<0.020
WH-B01-1 @ 6" (39.150724, -103.654113)	04/23/24	6'	0.6	<0.002	<0.002	<0.020	<0.020	<0.005	<0.020	<0.020	<0.020	<0.020	<0.020	<0.020	<0.020	<0.020	<0.002	<0.020
FL-B01-1 @ 4" (39.150706, -103.654132)	04/23/24	4'	0.4	<0.002	<0.002	<0.020	<0.020	<0.005	<0.020	<0.020	<0.020	<0.020	<0.020	<0.020	<0.020	<0.020	<0.002	<0.020
FL-B02-1 @ 4" (39.149725, -103.656021)	04/23/24	4'	0.3	<0.002	<0.002	<0.020	<0.020	<0.005	<0.020	<0.020	<0.020	<0.020	<0.020	<0.020	<0.020	<0.020	<0.002	<0.020
FL-B03-1 @ 4" (39.149656, -103.656021)	04/23/24	4'	0.8	<0.002	<0.002	<0.020	<0.020	<0.005	<0.020	<0.020	<0.020	<0.020	<0.020	<0.020	<0.020	<0.020	<0.002	<0.020
FL-B04-1 @ 4" (39.149748, -103.659138)	04/23/24	4'	0.4	<0.002	<0.002	<0.020	<0.020	<0.005	<0.020	<0.020	<0.020	<0.020	<0.020	<0.020	<0.020	<0.020	<0.002	<0.020

CECMC = Colorado Energy & Carbon Management Commission PID = Photoionization Detector ppm-v = parts per million by volume mg/kg = milligrams per kilogram NA = Not analyzed
Values presented with a less than symbol (<) did not contain concentrations at or above the laboratory reporting limit.

TABLE 4
METALS ANALYTICAL RESULTS SUMMARY
MOONRAKER 6-27
CLOSURE ASSESSMENT
39.150730, -103.654100
SE1/4 NW1/4 SEC.27 T10S R56W 6PM
LINCOLN COUNTY, COLORADO
API 05-073-06757
REMEDIATION # 21623

Sample Location (Latitude, Longitude)	Date	Approximate Depth	Arsenic (mg/kg)	Barium (mg/kg)	Cadmium (mg/kg)	Hexavalent Chromium (mg/kg)	Copper (mg/kg)	Lead (mg/kg)	Nickel (mg/kg)	Selenium (mg/kg)	Silver (mg/kg)	Zinc (mg/kg)
CECMC Table 915-1 Residential Soil Screening Levels			0.68**	15,000	71	0.3*	3,100	400	1,500	390	390	23,000
CECMC Table 915-1 Protection of Groundwater Soil Screening Levels			0.29**	82	0.38	0.00067*	46	14	26	0.26	0.8	370
Local Cleanup Level			7.55**	-	-	-	-	-	-	-	-	-
AST-B01-1 @ 3" (39.150095, -103.659111)	04/23/24	3"	3.04**	127	0.322	<0.161*	12.3	14.3	10.0	0.262	<0.0939	60.1
AST-B02-1 @ 3" (39.150150, -103.659113)	04/23/24	3"	2.84**	102	0.320	<0.149*	10.8	13.3	8.75	<0.257	<0.0989	49.8
PW-B01-1 @ 3" (39.150048, -103.659111)	04/23/24	3'	2.78**	124	0.315	<0.172*	11.8	13.4	9.92	<0.235	<0.0904	54.7
SEP-B01-1 @ 3" (39.149760, -103.659093)	04/23/24	3"	2.62**	113	0.332	<0.163*	13.0	13.5	10.1	0.3	<0.0982	59.6
COM-B01-1 @ 3" (39.149746, -103.659049)	04/23/24	3"	3.09**	116	0.330	<0.133*	12.4	13.9	10.1	<0.239	<0.0918	56.5
COM-B02-1 @ 3" (39.150332, -103.569277)	04/23/24	3"	2.29**	110	0.329	<0.172*	10.9	13.1	8.86	<0.233	<0.0895	59.9
WH-B01-1 @ 6" (39.150724, -103.654113)	04/23/24	6'	3.21**	111	0.156	<0.151*	9.72	9.59	9.54	<0.252	<0.0968	40.8
FL-B01-1 @ 4" (39.150706, -103.654132)	04/23/24	4'	2.33**	47.5	0.113	<0.156*	<8.82	2.66	3.94	<0.229	<0.0882	<32.6
FL-B02-1 @ 4" (39.149725, -103.656021)	04/23/24	4'	3.71**	228	0.149	<0.159*	9.75	10.1	10.3	<0.239	<0.0919	40.9
FL-B03-1 @ 4" (39.149656, -103.656021)	04/23/24	4'	1.31**	40.7	<0.0871	<0.119*	<8.71	4.66	3.61	<0.227	<0.0871	<32.2
FL-B04-1 @ 4" (39.149748, -103.659138)	04/23/24	4'	8.05**	462	0.320	<0.171*	16.8	15.5	17.3	<0.220	<0.0847	69.1
FL-B04-1 @ 4" (39.149748, -103.659138)	09/06/24	4'	10.01**	NA	NA	NA	NA	NA	NA	NA	NA	NA
Background												
WH-BG02 @ 4" (39.150842, -103.654072)	04/23/24	4'	5.18**	151	0.214	<0.174*	13.9	13.7	14.7	<0.251	<0.0964	57.2
WH-BG03 @ 4" (39.150773, -103.654274)	04/23/24	4'	4.74**	277	0.255	<0.143*	12.4	11.9	12.3	<0.245	<0.0944	49.1
FL-BG01 @ 4" (39.149834, -103.655070)	04/23/24	4'	4.43**	507	0.174	<0.154*	12.0	12.3	12.1	<0.246	<0.0946	51.6
FL-BG02 @ 3" (39.149812, -103.658916)	04/23/24	3'	4.73**	209	0.297	<0.163*	15.0	14.9	14.5	<0.256	<0.0984	70.0
PW-BG02 @ 3" (39.149944, -103.659230)	04/23/24	3"	2.72**	124	0.305	<0.141*	11.2	11.5	8.93	<0.227	<0.0873	48.9
PW-BG03 @ 3" (39.150232, -103.658983)	04/23/24	3"	2.93**	115	0.365	<0.172*	12.5	15.0	10.0	<0.233	<0.0897	58.2



TABLE 4
METALS ANALYTICAL RESULTS SUMMARY
MOONRAKER 6-27
CLOSURE ASSESSMENT
39.150730, -103.654100
SE1/4 NW1/4 SEC.27 T10S R56W 6PM
LINCOLN COUNTY, COLORADO
API 05-073-06757
REMEDIATION # 21623

Sample Location (Latitude, Longitude)	Date	Approximate Depth	Arsenic (mg/kg)	Barium (mg/kg)	Cadmium (mg/kg)	Hexavalent Chromium (mg/kg)	Copper (mg/kg)	Lead (mg/kg)	Nickel (mg/kg)	Selenium (mg/kg)	Silver (mg/kg)	Zinc (mg/kg)
CECMC Table 915-1 Residential Soil Screening Levels			0.68**	15,000	71	0.3*	3,100	400	1,500	390	390	23,000
CECMC Table 915-1 Protection of Groundwater Soil Screening Levels			0.29**	82	0.38	0.00067*	46	14	26	0.26	0.8	370
Local Cleanup Level			7.55**	-	-	-	-	-	-	-	-	-
Background-01 @ 4' (39.150096, -103.659342)	06/25/24	4'	4.55**	NA	NA	NA	NA	NA	NA	NA	NA	NA
Background-02 @ 4' (39.149455, -103.659341)	06/25/24	4'	3.74**	NA	NA	NA	NA	NA	NA	NA	NA	NA
Background-03 @ 4' (39.150033, -103.658793)	09/06/24	4'	4.24**	NA	NA	NA	NA	NA	NA	NA	NA	NA
Background-04 @ 4' (39.149862, -103.658672)	09/06/24	4'	6.04**	NA	NA	NA	NA	NA	NA	NA	NA	NA
Background-05 @ 4' (39.149385, -103.658781)	09/06/24	4'	5.58**	NA	NA	NA	NA	NA	NA	NA	NA	NA
Background-06 @ 4' (39.149312, -103.659130)	09/06/24	4'	4.95**	NA	NA	NA	NA	NA	NA	NA	NA	NA
CECMC = Colorado Energy & Carbon Management Commission			mg/kg = milligrams per kilogram				NA = Not Analyzed					
Values presented with a less than symbol (<) did not contain concentrations at or above the laboratory reporting limit.												
Values presented in BOLD contained concentrations exceeding CECMC Table 915-1 Residential Soil Screening Level Limits but within Background results												
Values presented in BOLD contained concentrations exceeding CECMC Table 915-1 Residential Soil Screening Level Limits and Background results												
*Achievable practical quantitative limits for Hexavalent Chromium in soils is in the range of 0.1 to 1 mg/kg.												
**Arsenic is naturally occurring in Colorado. Local Cleanup Level (7.55 mg/kg) is 1.25 x Background (6.04 mg/kg).												





ATTACHMENT A

Photo Log

Moonraker 6-27 Photographic Log Remediation #21623

Wellhead, Flowline, and Tank Battery Decommissioning



Assessment 02/03/2023



Tank battery sample locations looking south.



Background soil sample locations looking west

Assessment 02/03/2023

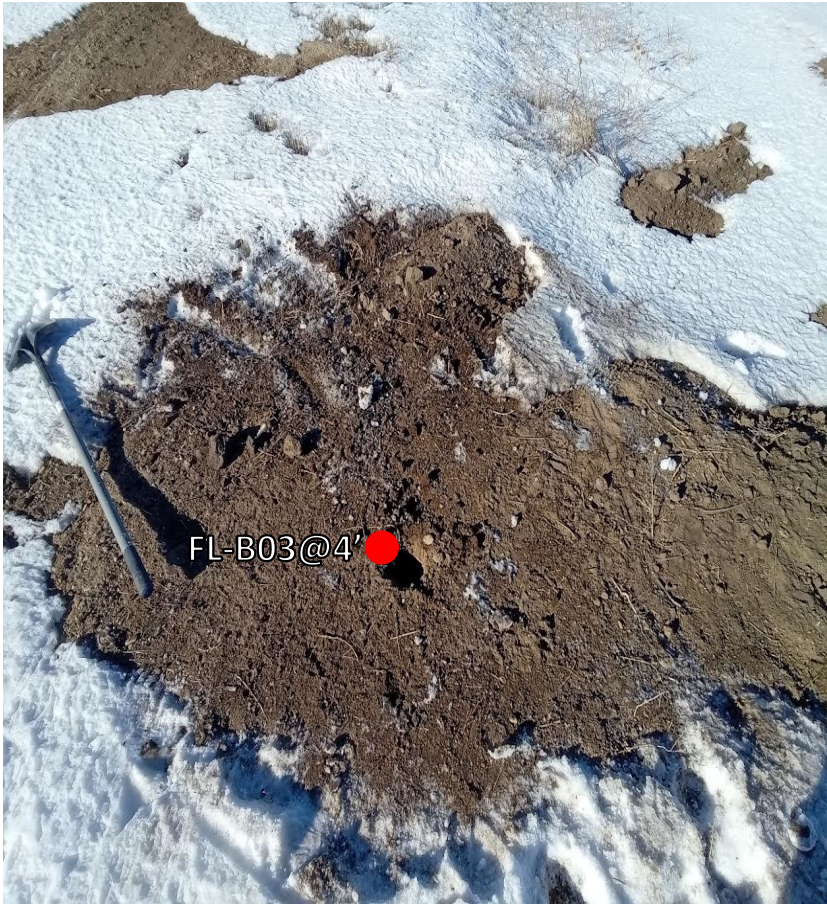


Separator, flowline, and combustor sample locations and looking northwest.

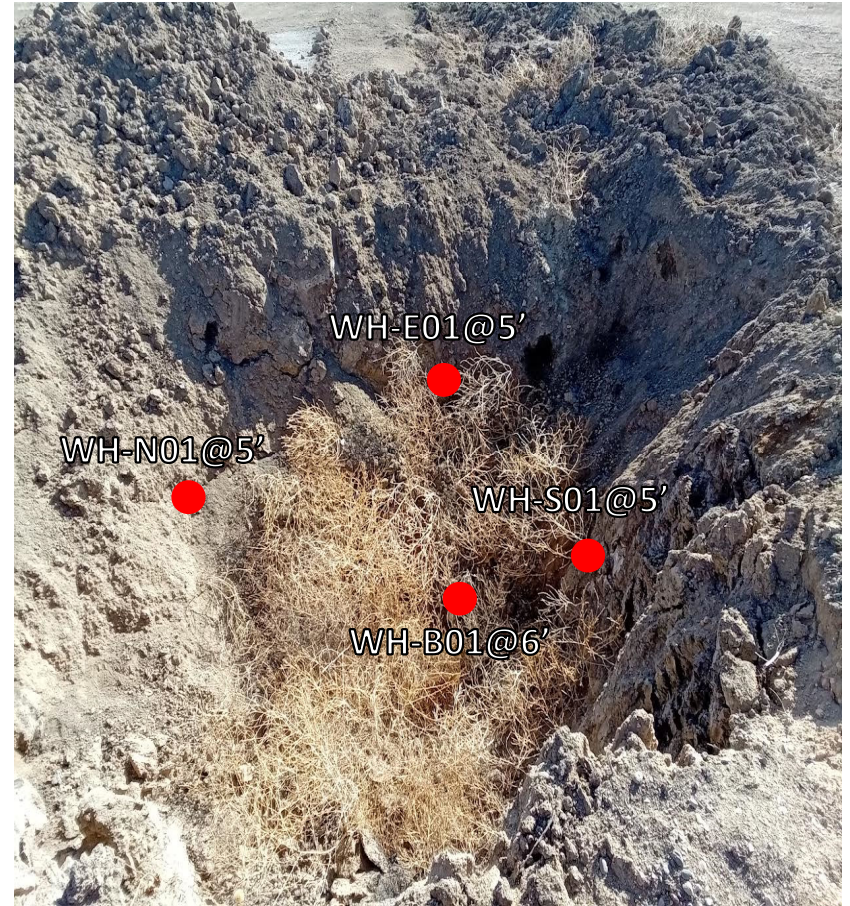


Flowline sample location looking west.

Assessment 02/03/2023 & 03/09/2023



Flowline sample location looking west.



Wellhead sample locations looking east.

Assessment 03/09/2023



Wellhead/Flowline sample locations looking west.



Wellhead sample locations looking east.

Assessment 03/09/2023



Wellhead background sample location looking west.

Assessment 04/23/2024



Facing north
No petroleum hydrocarbon staining or odor observed



Facing north
No petroleum hydrocarbon staining or odor observed

Assessment 04/23/2024



Facing north
No petroleum hydrocarbon staining or odor observed



Facing north
No petroleum hydrocarbon staining or odor observed

Assessment 04/23/2024



Facing north
No petroleum hydrocarbon staining or odor observed



Facing north
No petroleum hydrocarbon staining or odor observed

Assessment 04/23/2024



Facing north
No petroleum hydrocarbon staining or odor observed



Facing south
No petroleum hydrocarbon staining or odor observed

Assessment 04/23/2024



Facing north
No petroleum hydrocarbon staining or odor observed



Facing north
No petroleum hydrocarbon staining or odor observed

Assessment 04/23/2024



Facing north
No petroleum hydrocarbon staining or odor observed



Facing north
No petroleum hydrocarbon staining or odor observed

Assessment 04/23/2024



Facing north
No petroleum hydrocarbon staining or odor observed



Facing north
No petroleum hydrocarbon staining or odor observed

Assessment 04/23/2024



Facing north
No petroleum hydrocarbon staining or odor observed



Facing north
No petroleum hydrocarbon staining or odor observed

Assessment 04/23/2024 – 06/27/24



Facing north
No petroleum hydrocarbon staining or odor observed



Facing north
No petroleum hydrocarbon staining or odor observed

Assessment 06/27/24-09/06/24



Facing north
No petroleum hydrocarbon staining or odor observed



Facing northeast
No petroleum hydrocarbon staining or odor observed

Assessment 09/06/24



Facing east
No petroleum hydrocarbon staining or odor observed



Facing east
No petroleum hydrocarbon staining or odor observed

Assessment 09/06/24



Facing northeast
No petroleum hydrocarbon staining or odor observed



Facing east
No petroleum hydrocarbon staining or odor observed