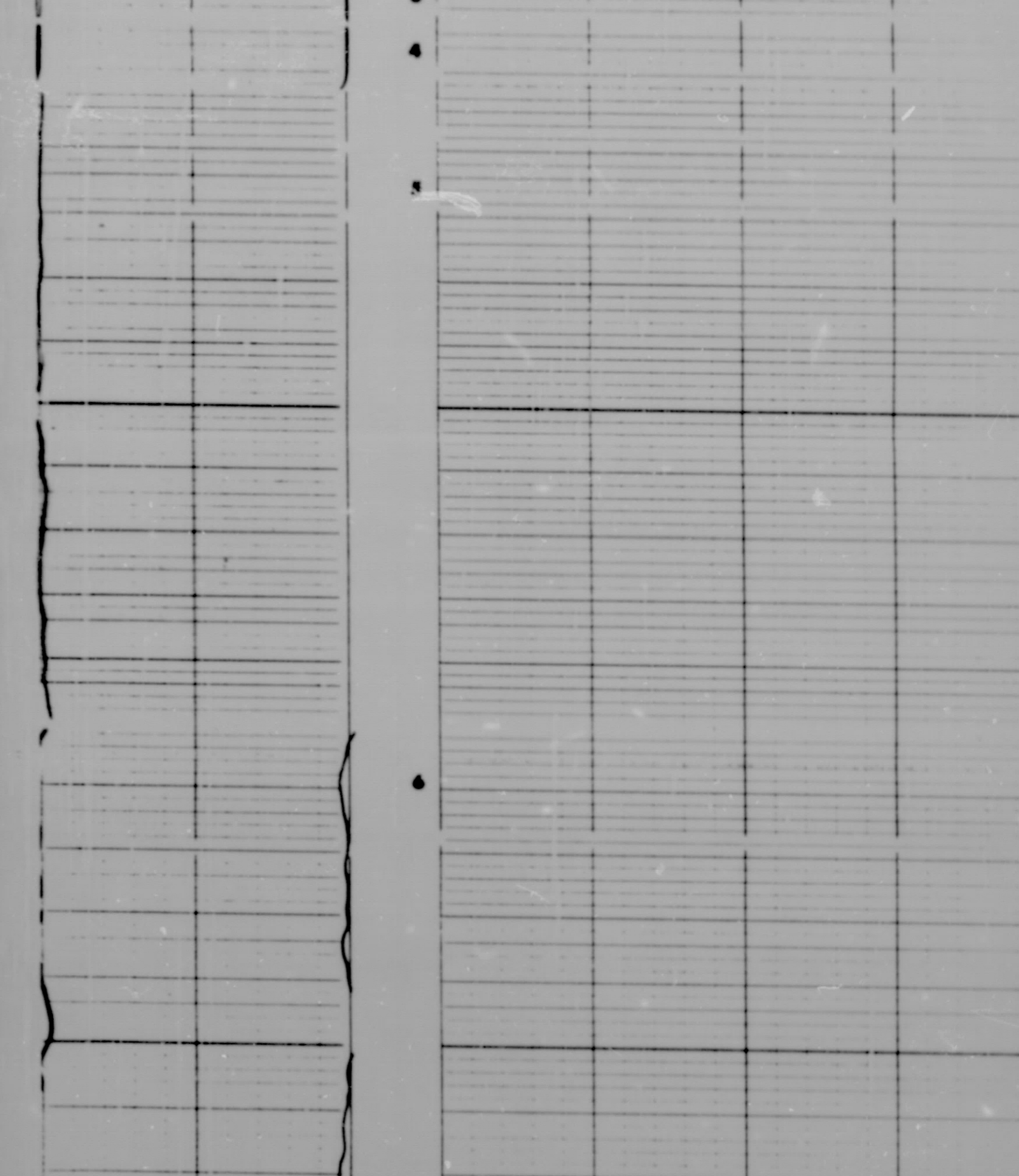
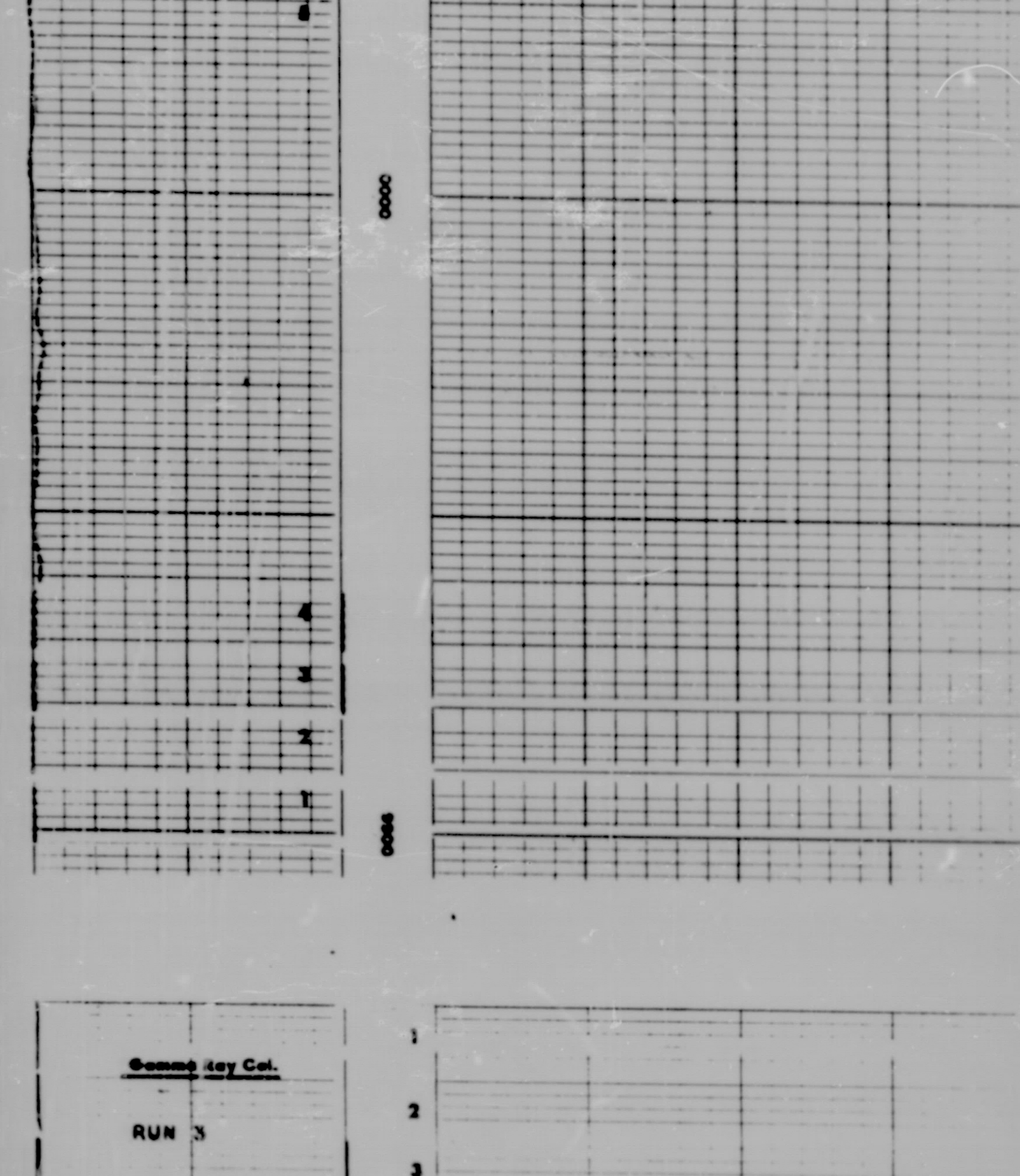
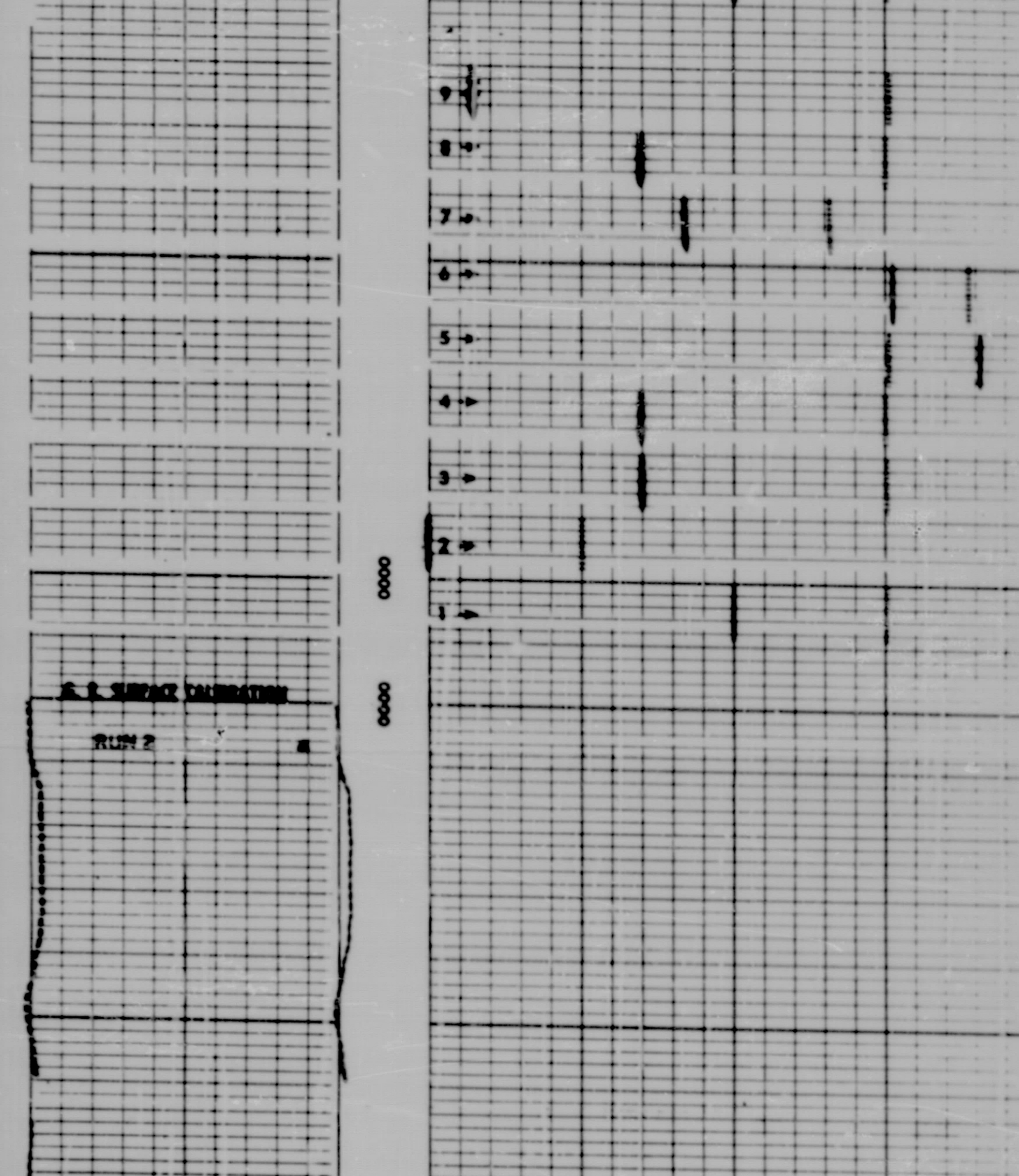
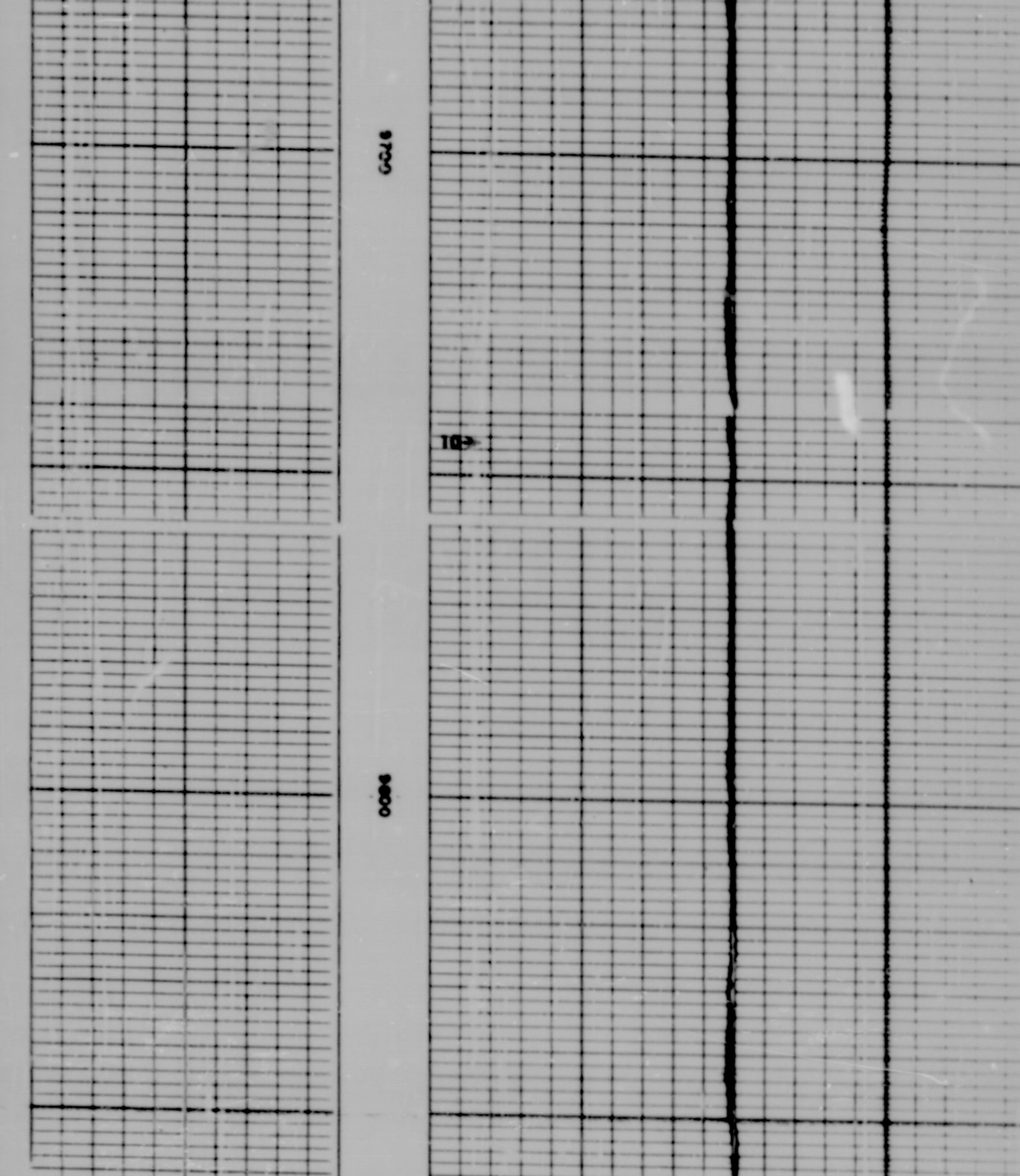
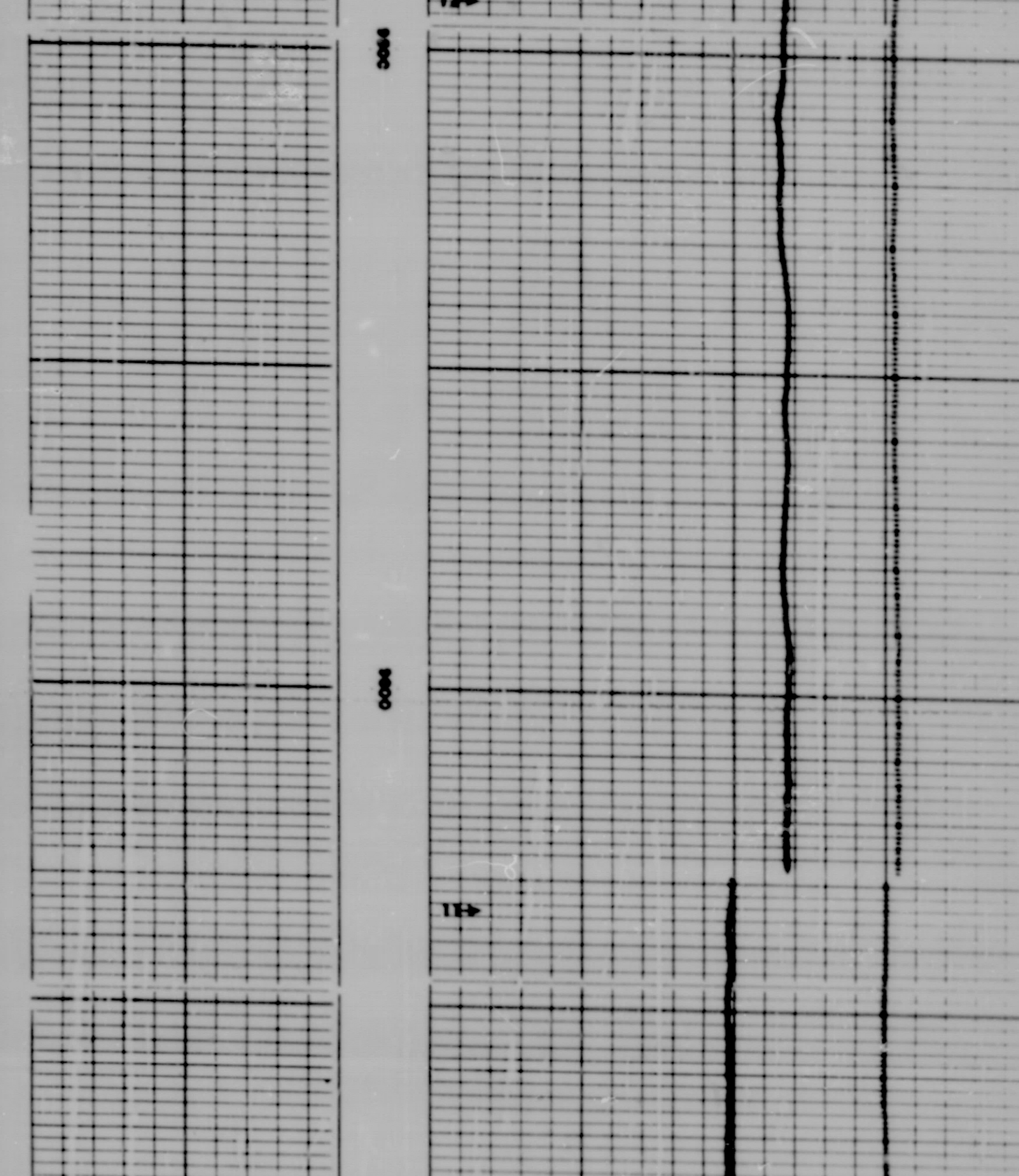
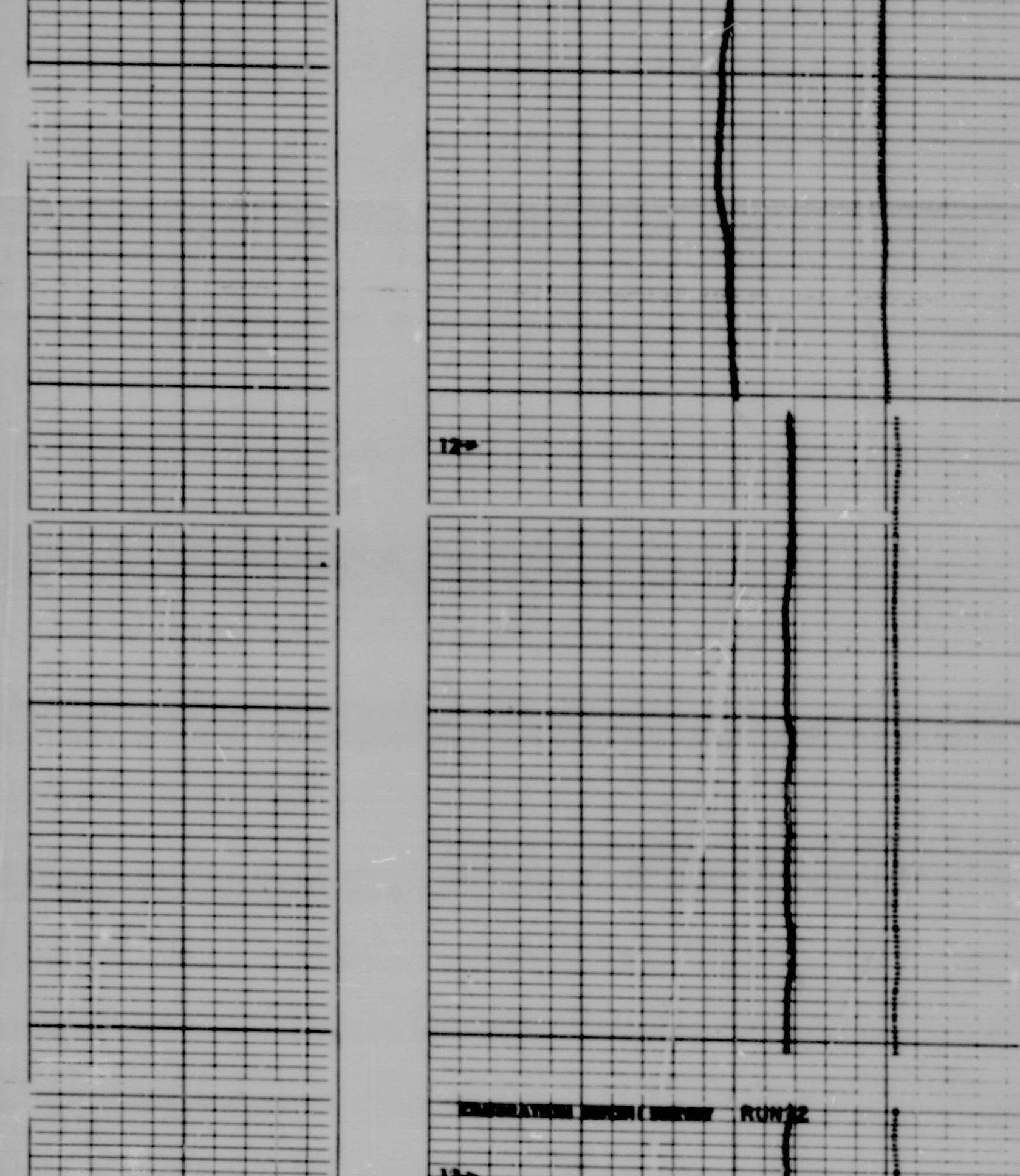
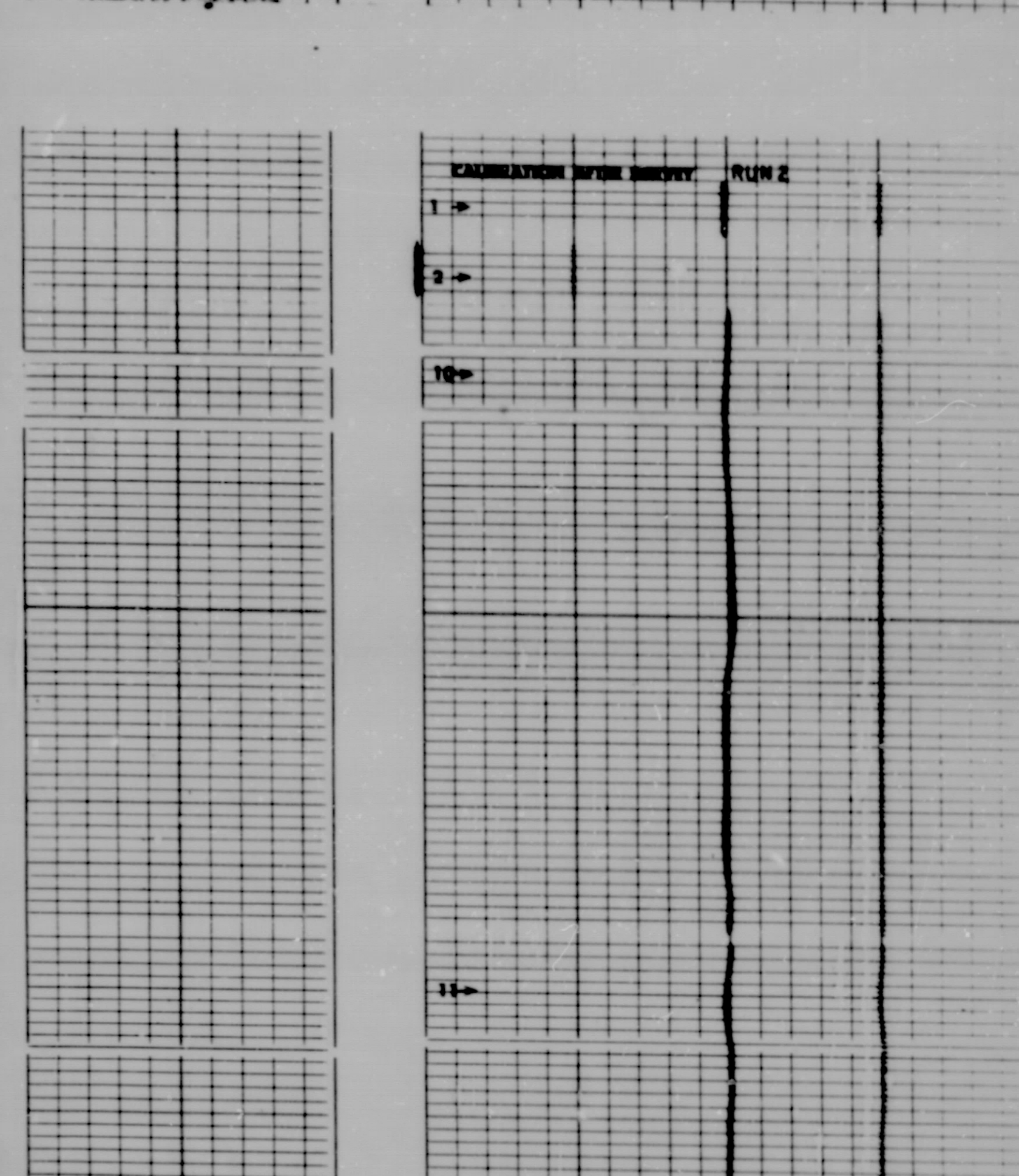
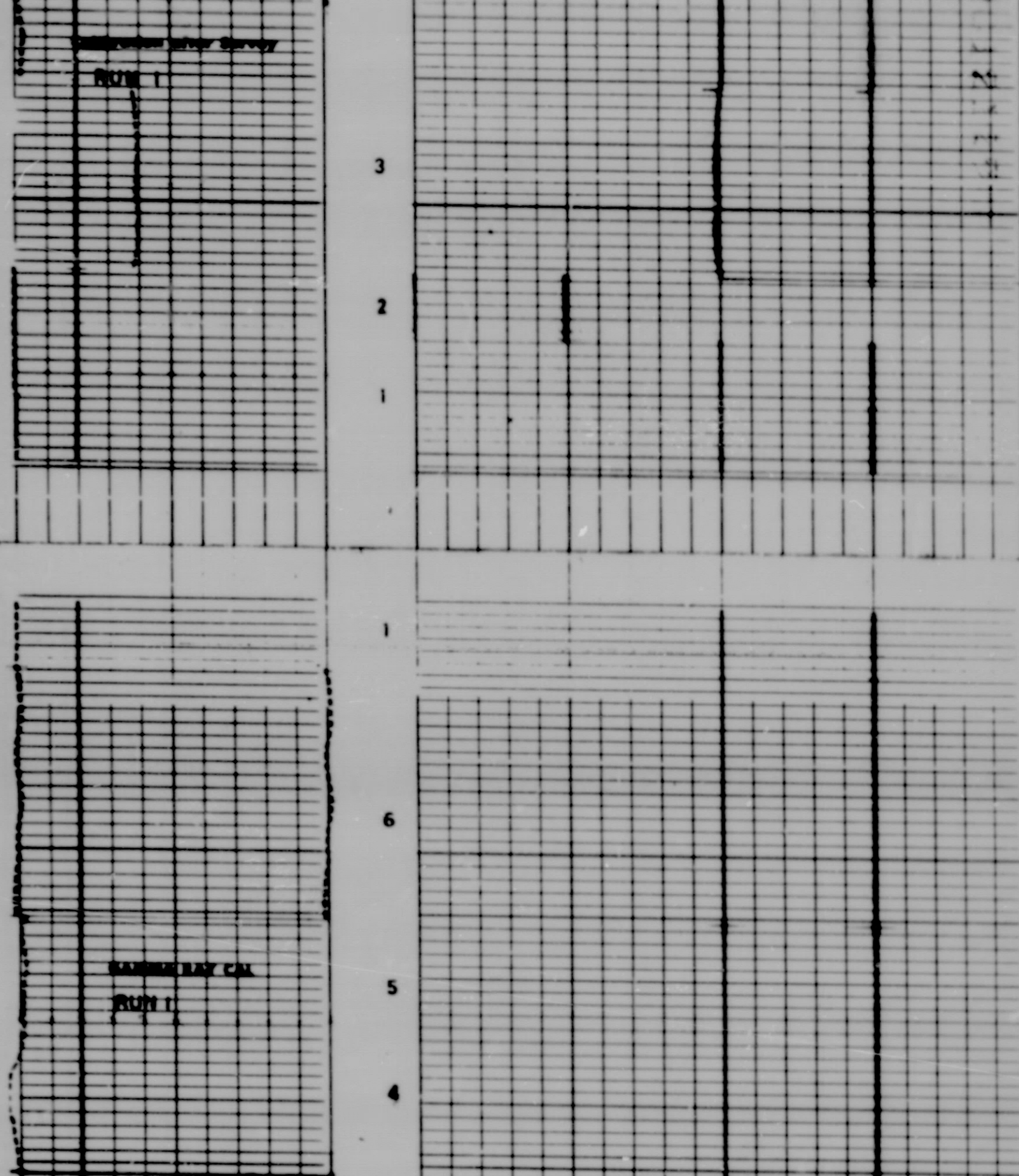
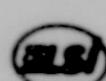
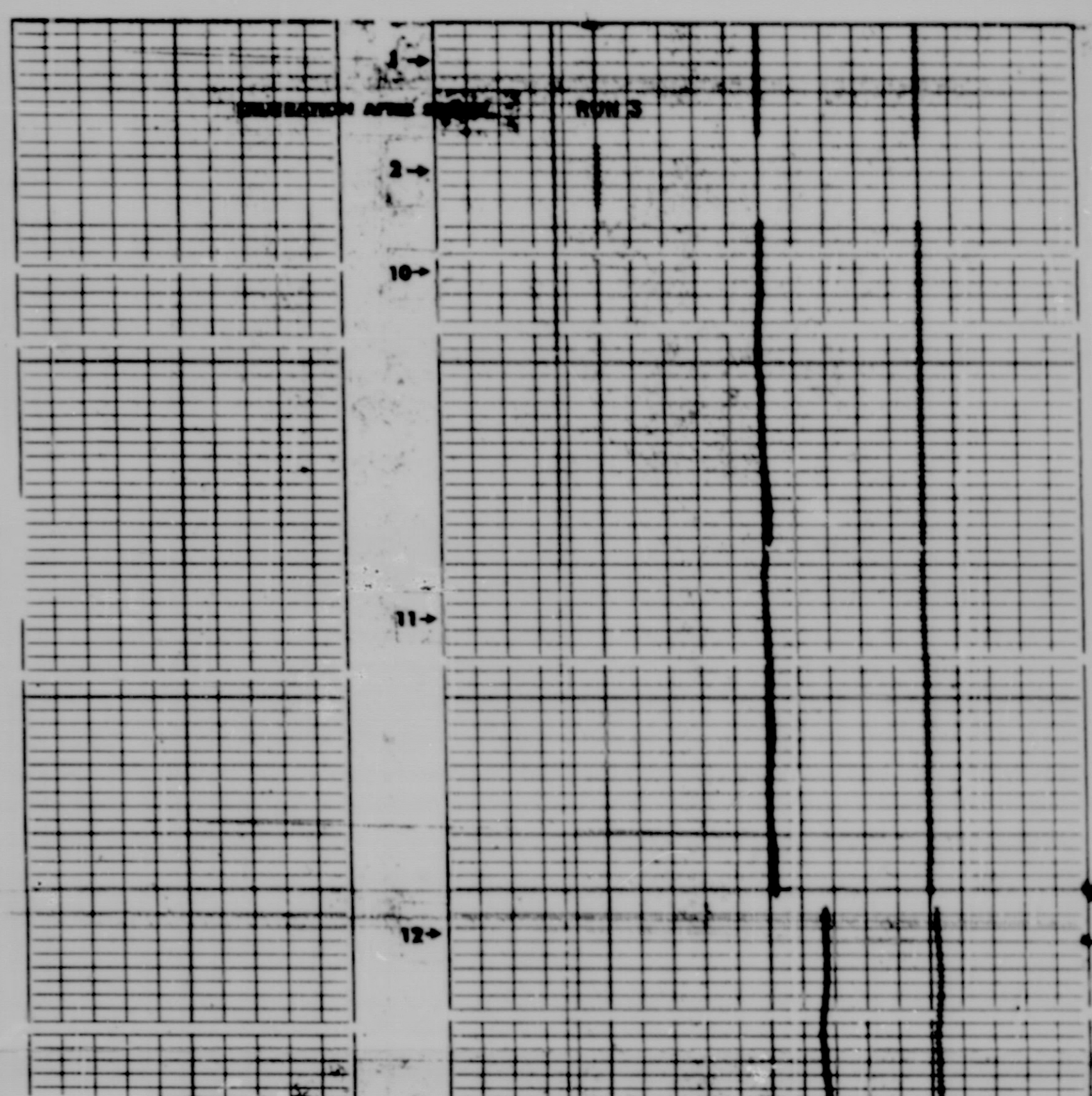
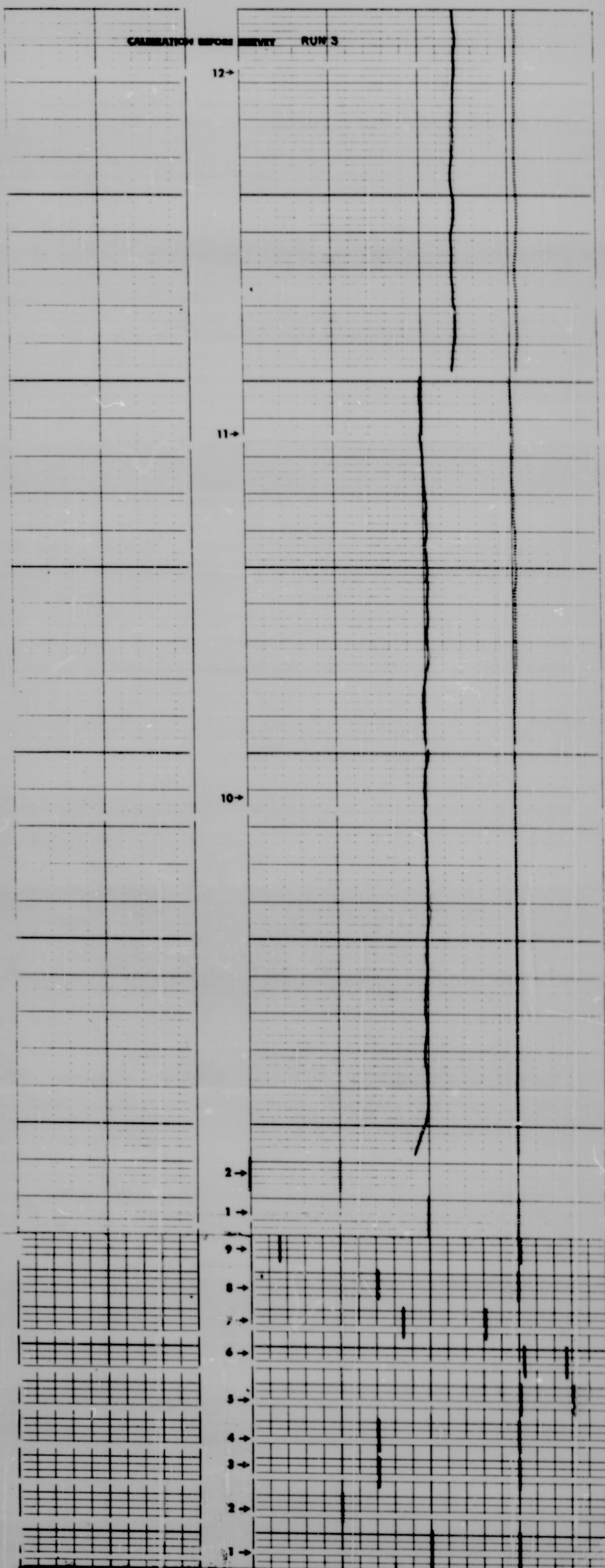


CALIBRATION DATA





REPRODUCTION FOR RESALE PROHIBITED



CALIBRATION DATA

COMPANY COLORADO CORPORATION

WELL KING FEE NO. 1

FIELD WILD CAT

COUNTY GRAND STATE COLORADO

SCHL FR 2129

SCHL TD 2130

DRIL TD 2125

Elev:

KB 8500

DF ----

GA 8490

Microfilmed by M.J. Systems
 Filmed from half scale paper print
 reproductions, which are available
 through Petroleum Information, Inc.
 A subsidiary of A.C. Nielson Company