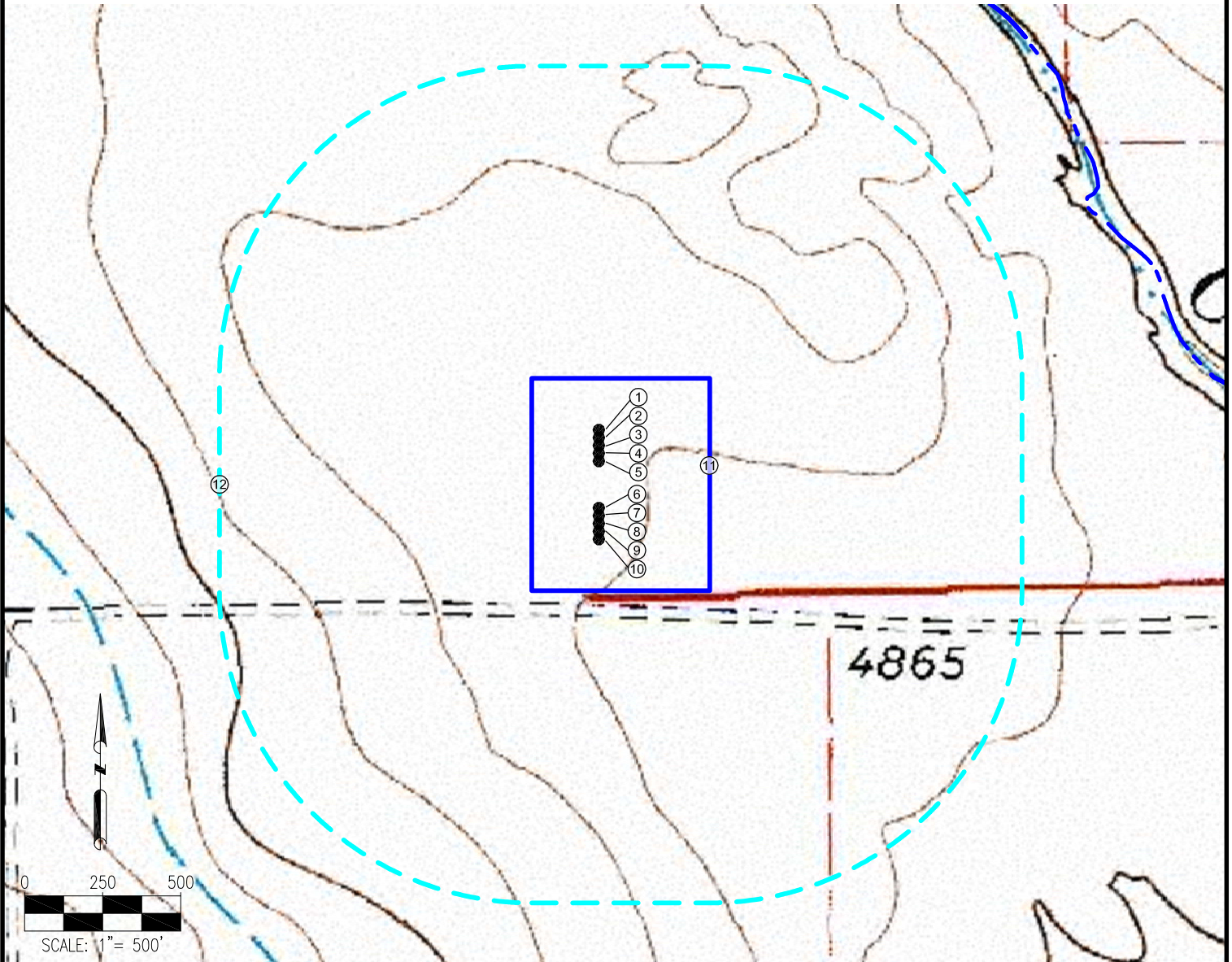


# ANDERSON PAD 9-59-31-SESW HYDROLOGY MAP



MEASUREMENTS ARE MADE FROM THE NEAREST EDGE OF THE DISTURBANCE AREA.

- |                                |                                |
|--------------------------------|--------------------------------|
| 1. ANDERSON FED-8-59-6-0508BE  | 10. ANDERSON FED-8-59-6-2825AE |
| 2. ANDERSON FED-8-59-6-0508CDE | 11. DISTURBANCE AREA           |
| 3. ANDERSON FED-8-59-6-1209CE  | 12. 1000' RADIUS               |
| 4. ANDERSON FED-8-59-6-1209AE  |                                |
| 5. ANDERSON FED-8-59-6-1209BE  |                                |
| 6. ANDERSON FED-8-59-6-2124CE  |                                |
| 7. ANDERSON FED-8-59-6-2124BE  |                                |
| 8. ANDERSON FED-8-59-6-2124CDE |                                |
| 9. ANDERSON FED-8-59-6-2124CE2 |                                |

## LEGEND:

- = PROPOSED WELL
- = STREAM
- ▭ = DISTURBANCE AREA
- - - = 1000' RADIUS

## NOTES:

1. THIS ILLUSTRATION DOES NOT REPRESENT A MONUMENTED LAND SURVEY AND THEREFORE CANNOT BE RELIED UPON TO DETERMINE OWNERSHIP.
2. THIS ILLUSTRATION IS INTENDED FOR REFERENCE USE ONLY AND SHOULD NOT BE USED TO ESTABLISH, TRANSFER, OR DISPUTE BOUNDARIES.
3. PARCEL LINES DEPICTED HEREON MAY NOT HAVE BEEN FIELD VERIFIED AND MAY BE BASED UPON PUBLICLY AVAILABLE DATA.

## DATA SOURCE:

TOPO MAP: USGS

PUBLICLY AVAILABLE DATA SOURCES HAVE NOT BEEN INDEPENDENTLY VERIFIED BY PFS.

PREPARED BY:



FIELD DATE:

02-24-16

DRAWING DATE:

04-20-16

BY:

KAD

CHECKED BY:

MLP

SITE NAME:

ANDERSON PAD 9-59-31-SESW

SURFACE LOCATION:

SE 1/4 SW 1/4 SEC. 31, T9N, R59W, 6TH P.M.  
WELD COUNTY, COLORADO

PREPARED FOR:

