



Sector Bond / Gamma Ray
CCL Log

API No.

Company **Wavetech Helium Inc.**

Well Harker Family #1

Field Harker Ranch

County	Cheyenne	State	Colorado
--------	----------	-------	----------

Location 789' ENI & 2206 EEL

NW NE

Sec: 22 Twp: 12S Rge: 43W

Elevation

Ground Level	Elevation
4120	4120

From Kelly Bushing 13 Ft. Above Perm. Datum

red From Kelly Bushing

1000

1000

K.B.	4133
D.F.	4120
G.L.	

One

	7/25/2024
--	-----------

၁၄	7/11/2024
----	-----------

Primary	Operation
---------	-----------

	5438
--	------

5398

al	5396 to
----	---------

	5.5"	@
--	------	---

D.V. Tool	////
-----------	------	------

h	////
	////

the Cement	////
------------	------

e Admix	////
---------	------

Hole	Water

Full	
Full	

75	///	///
----	-----	-----

-- MIS.	////	
---------	------	--

ad Cement 10p	
ment 10p	

ment 100	4674
----------	------

Temperature	167.1
	DPT04

200	2151
-----	------

ned	c
location	c

LOCATION	K. Schmidt
----------	------------

	R. Schmitt
	Bill McKenna

DIET MICH

<<< Fold Here >>>

All interpretations are opinions based on inferences from electrical or other measurements and we cannot and do not guarantee the accuracy or correctness of any interpretation, and we shall not, except in the case of gross or willful negligence on our part, be liable or responsible for any loss, costs, damages, or expenses incurred or sustained by anyone resulting from any interpretation made by any of our officers, agents or employees. These interpretations are also subject to our general terms and conditions set out in our current Price Schedule.

Comments

Thank you for using Excel Wireline
(620) 388-5676

Burlington, Colo. & 385 Hwy
20.1 S. to curve
3.3 E., SE to well

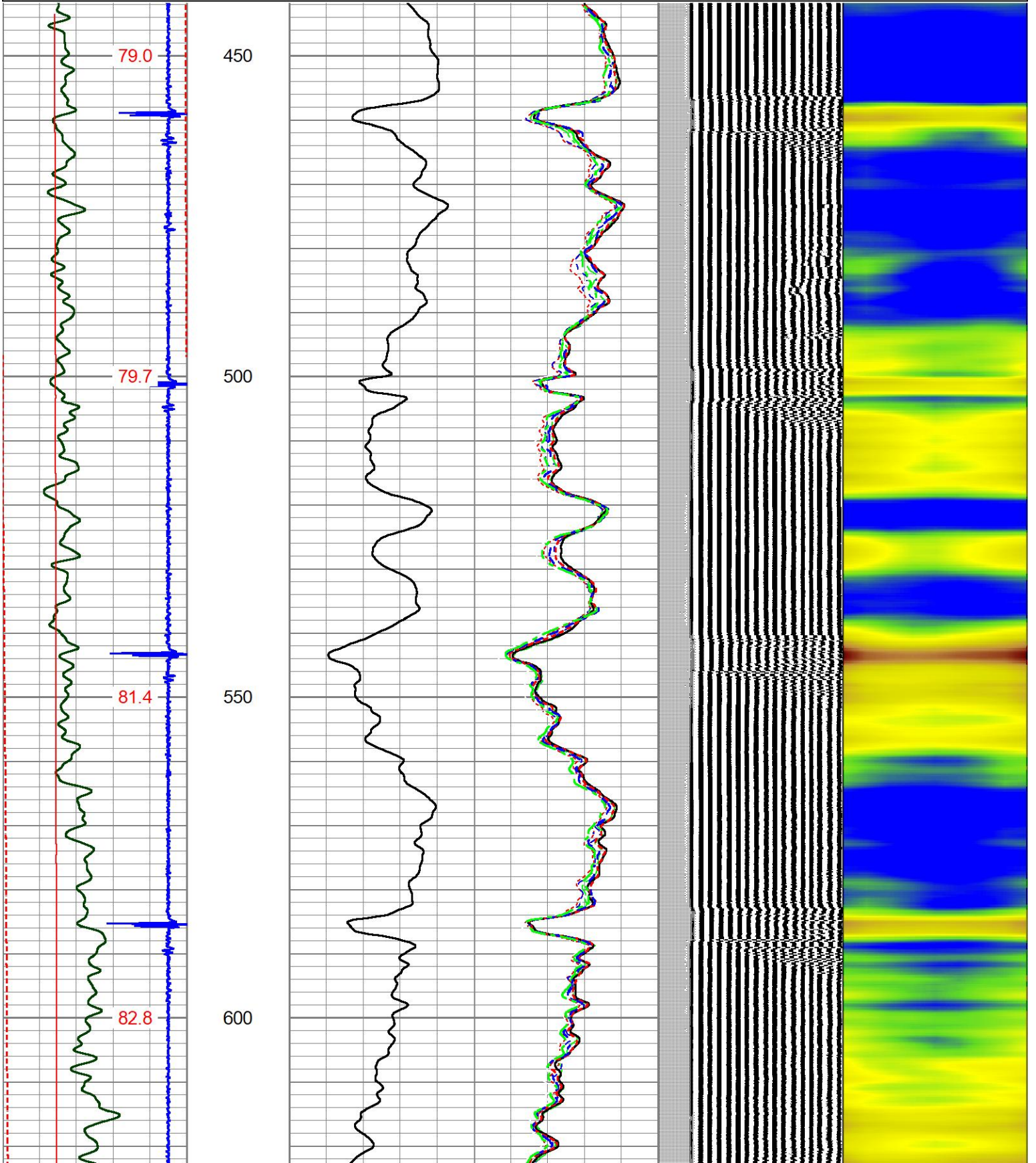
Database File	wavetech_harker_family_1_31_22.db
Dataset Pathname	rcbl/pass7
Presentation Format	prb_rbt8
Dataset Creation	Thu Jul 25 16:27:42 2024
Charted by	Depth in Feet scaled 1:240

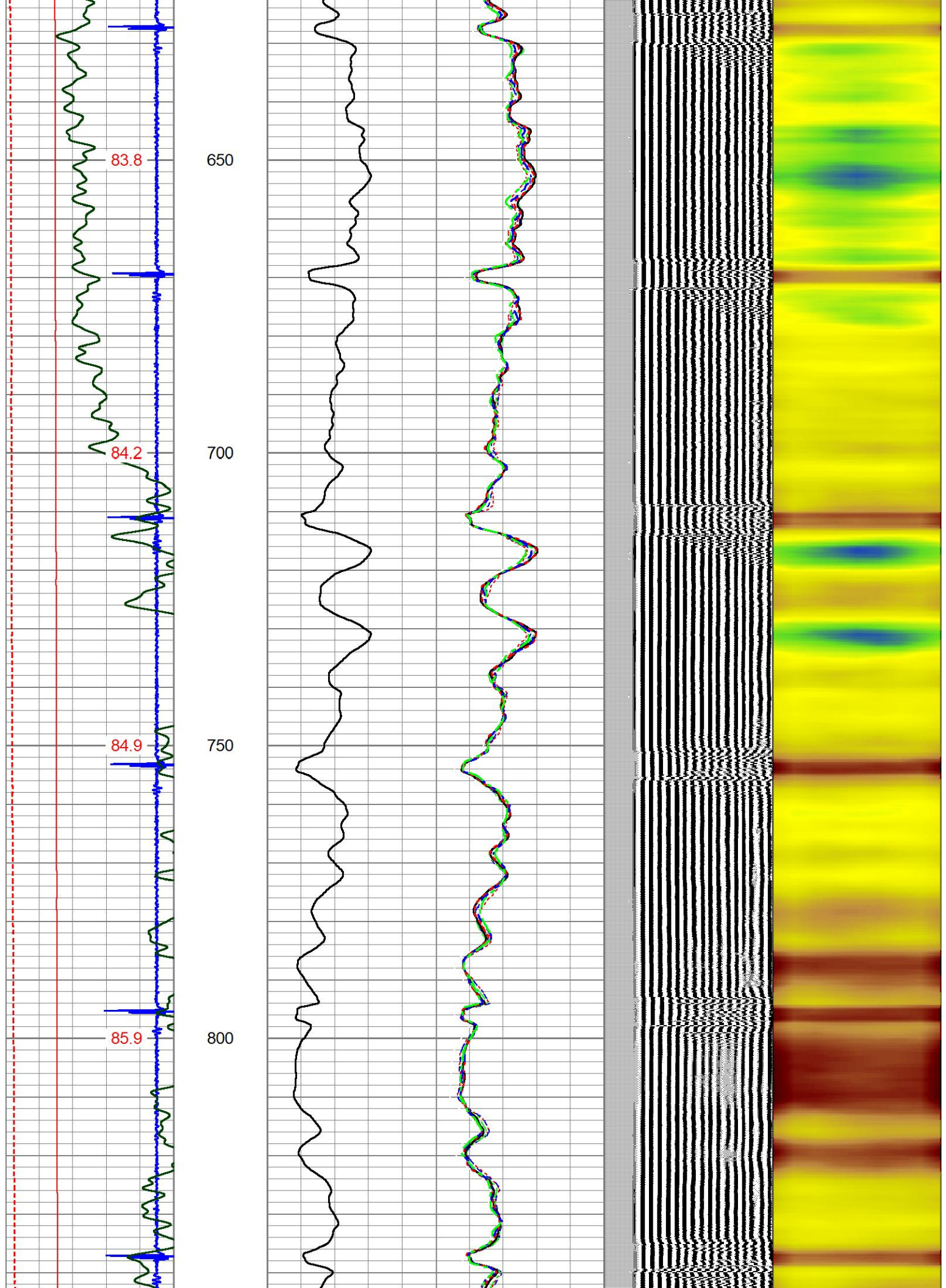
-9	CCL	1
0	GR (GAPI)	200
GCT_TEMP		
80	(degF)	200
0	LTEN (lb)	2500
	GCT_Temp	
	(degF)	

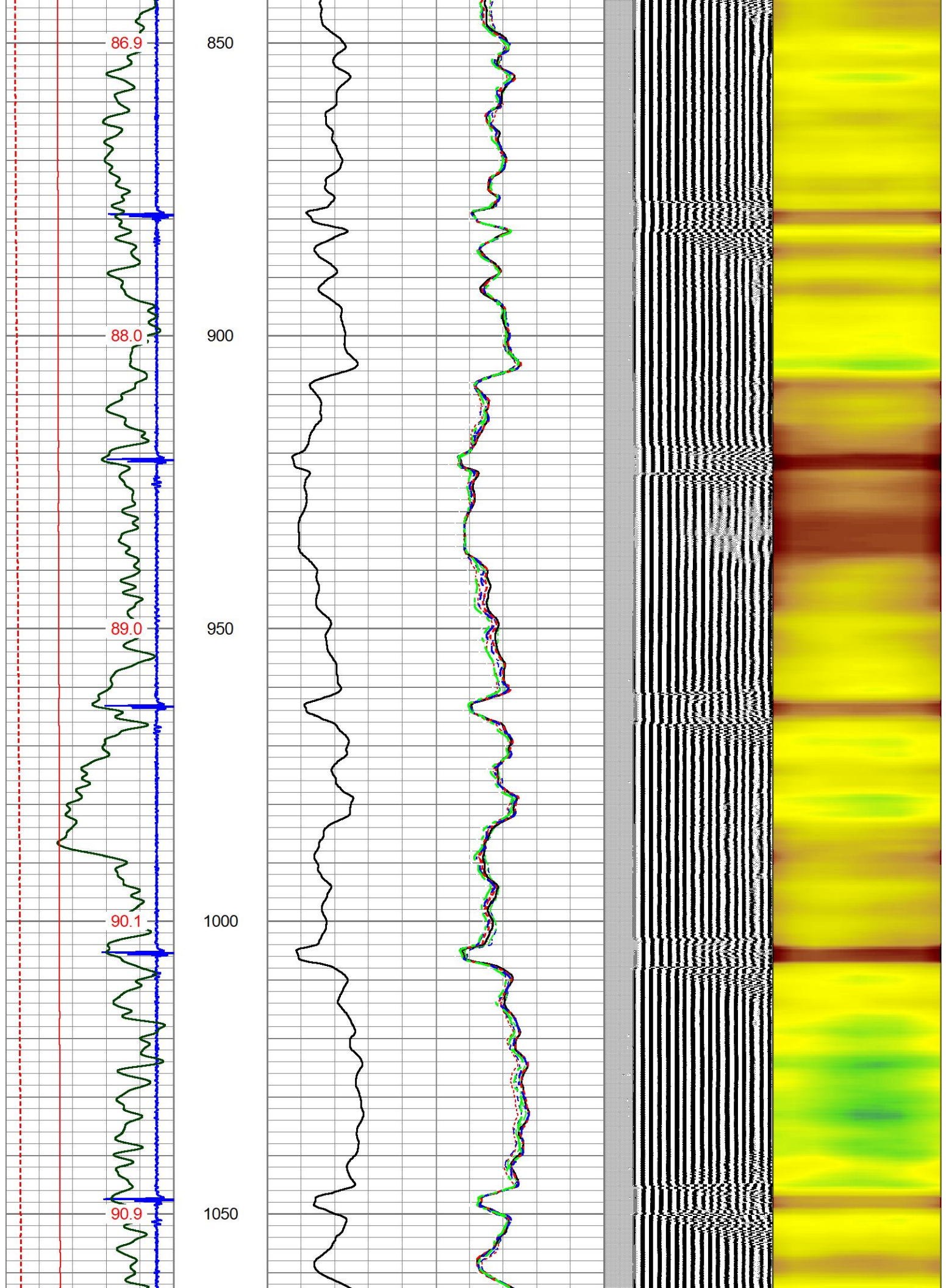
0	AMP (mV)	100
0	AMPx10 (mV)	10

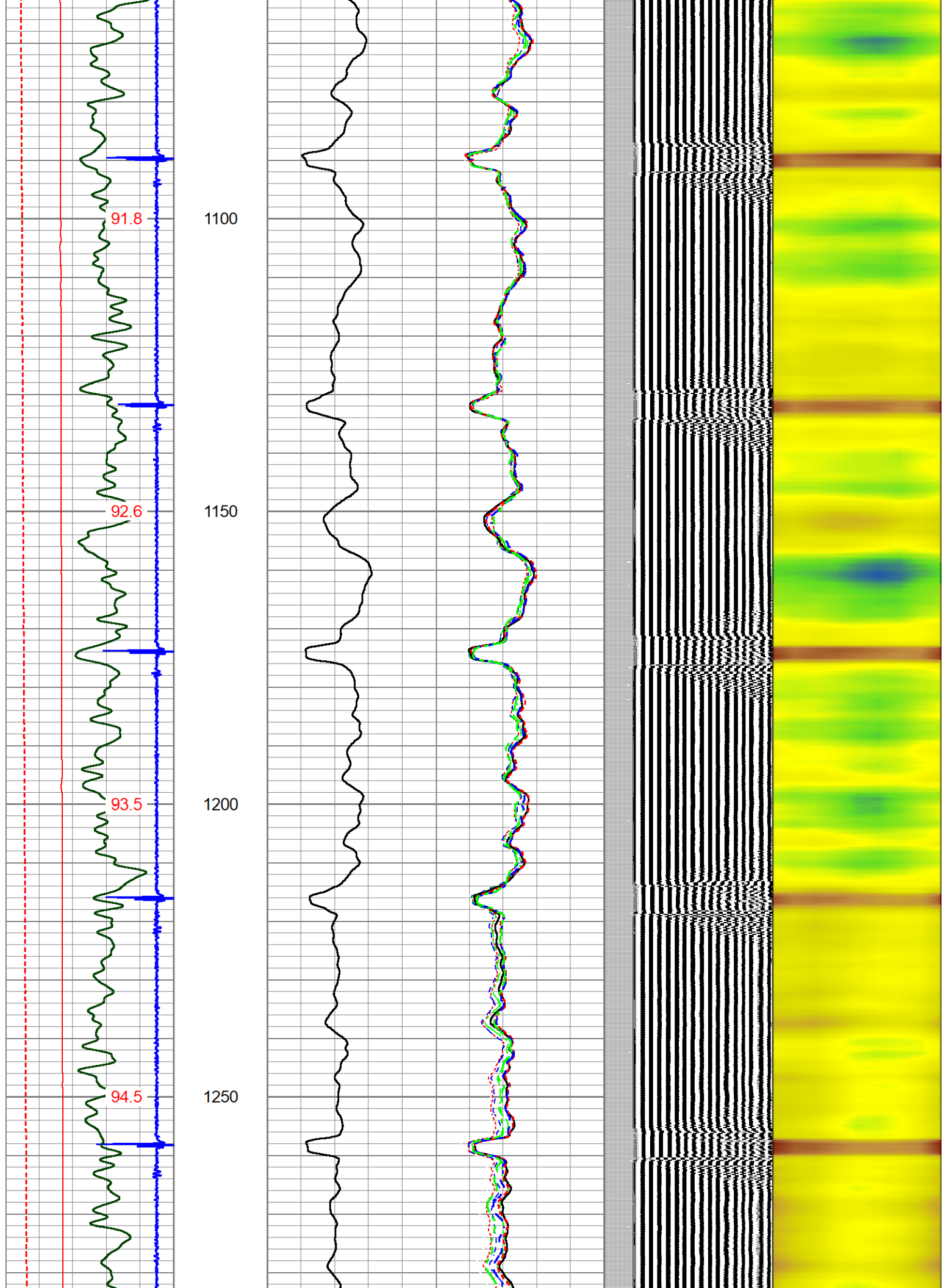
0	AMPS1	150
0	AMPS2	150
0	AMPS3	150
0	AMPS4	150
0	AMPS5	150
0	AMPS6	150
0	AMPS7	150
0	AMPS8	150

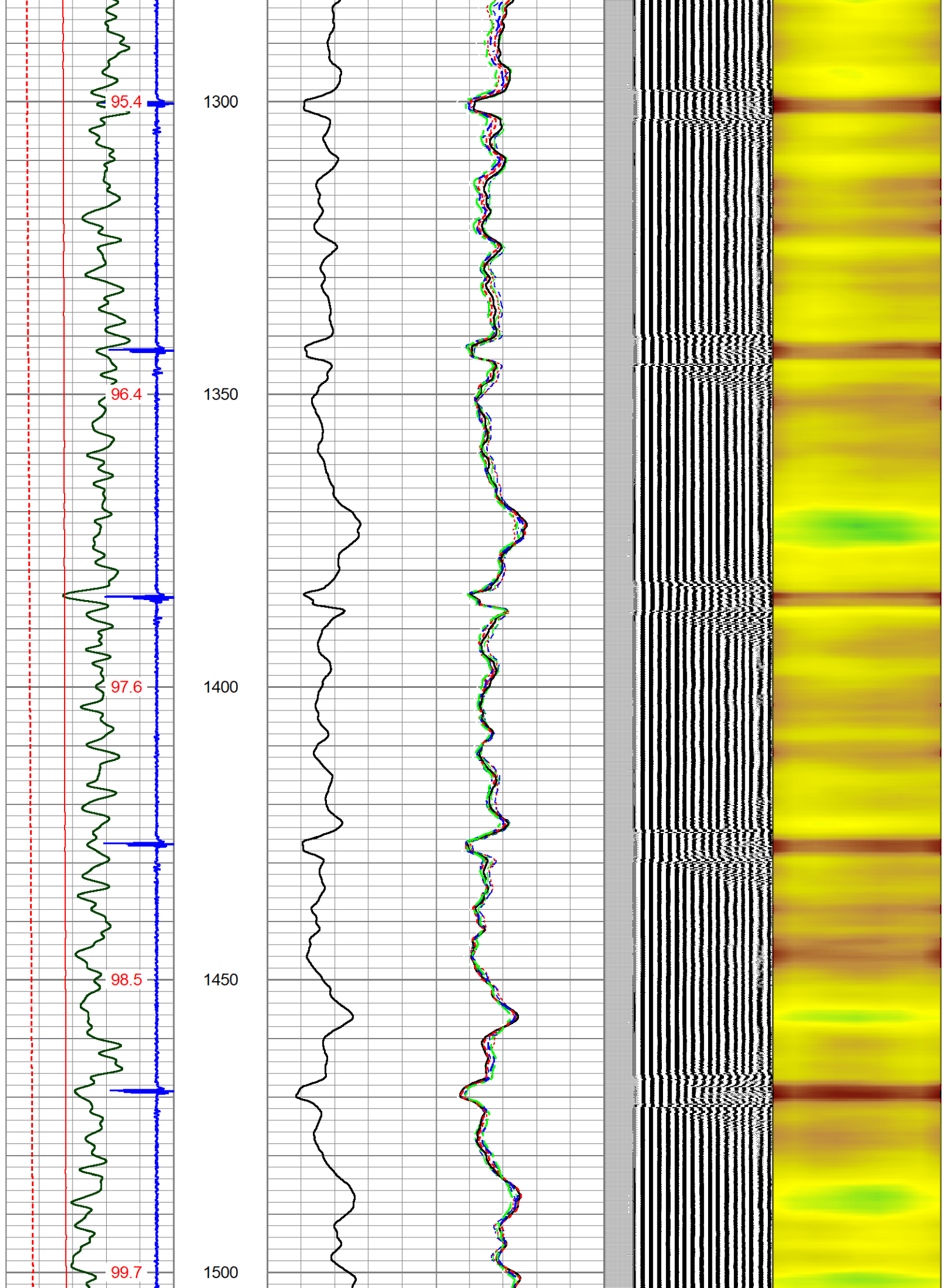
200	VDL (usec)	1200	1	Cement Map	8
-----	------------	------	---	------------	---

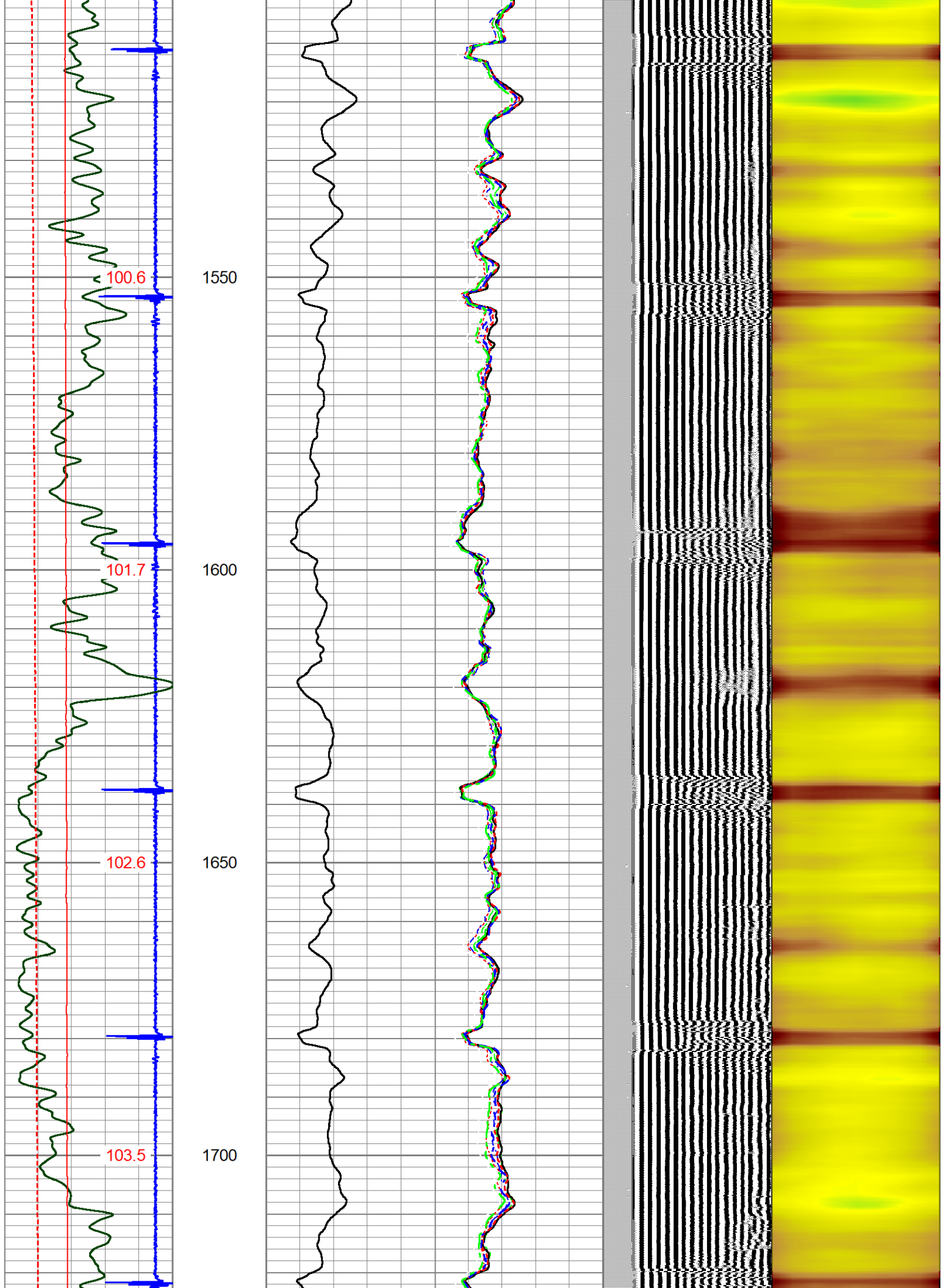


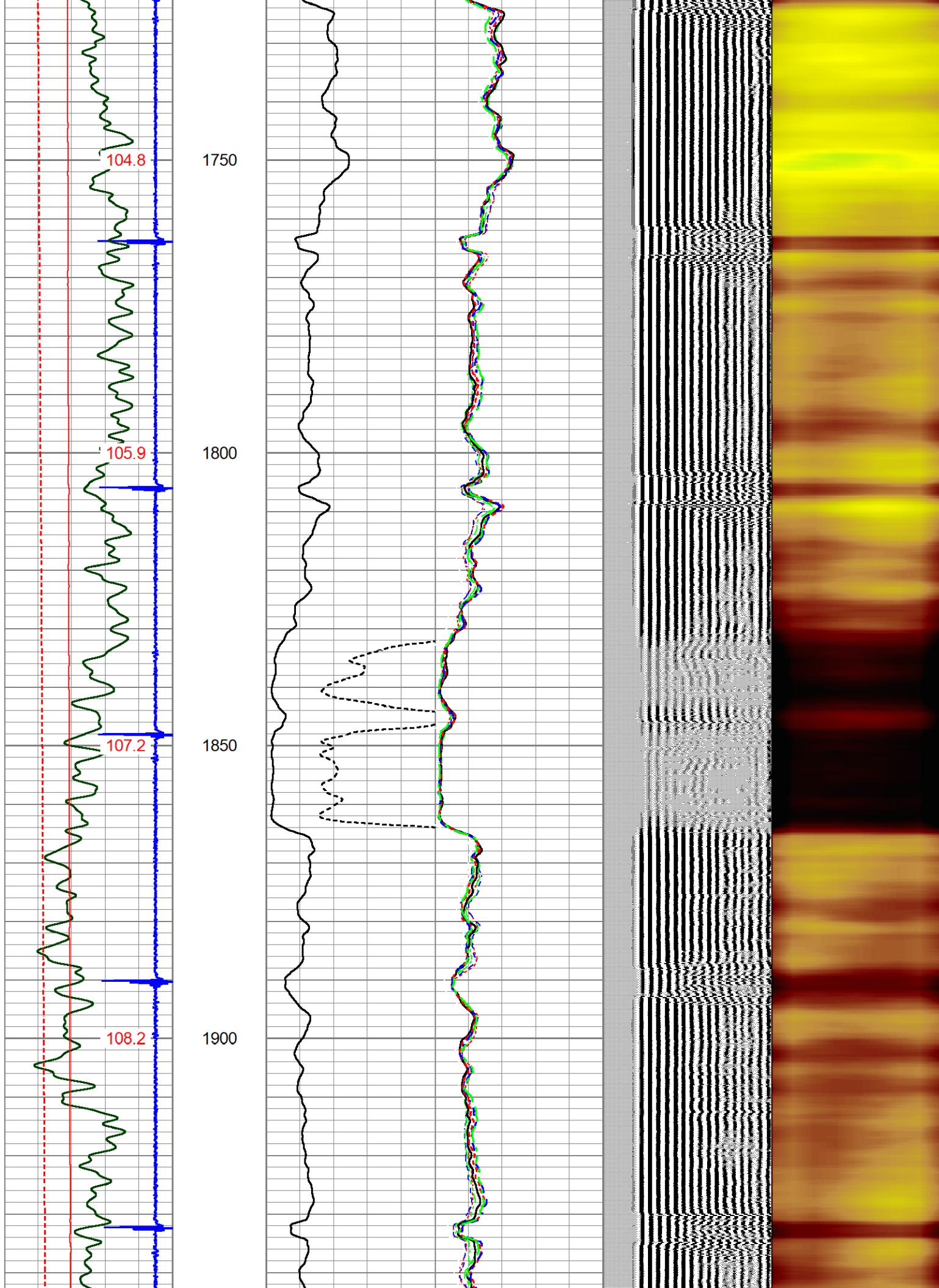


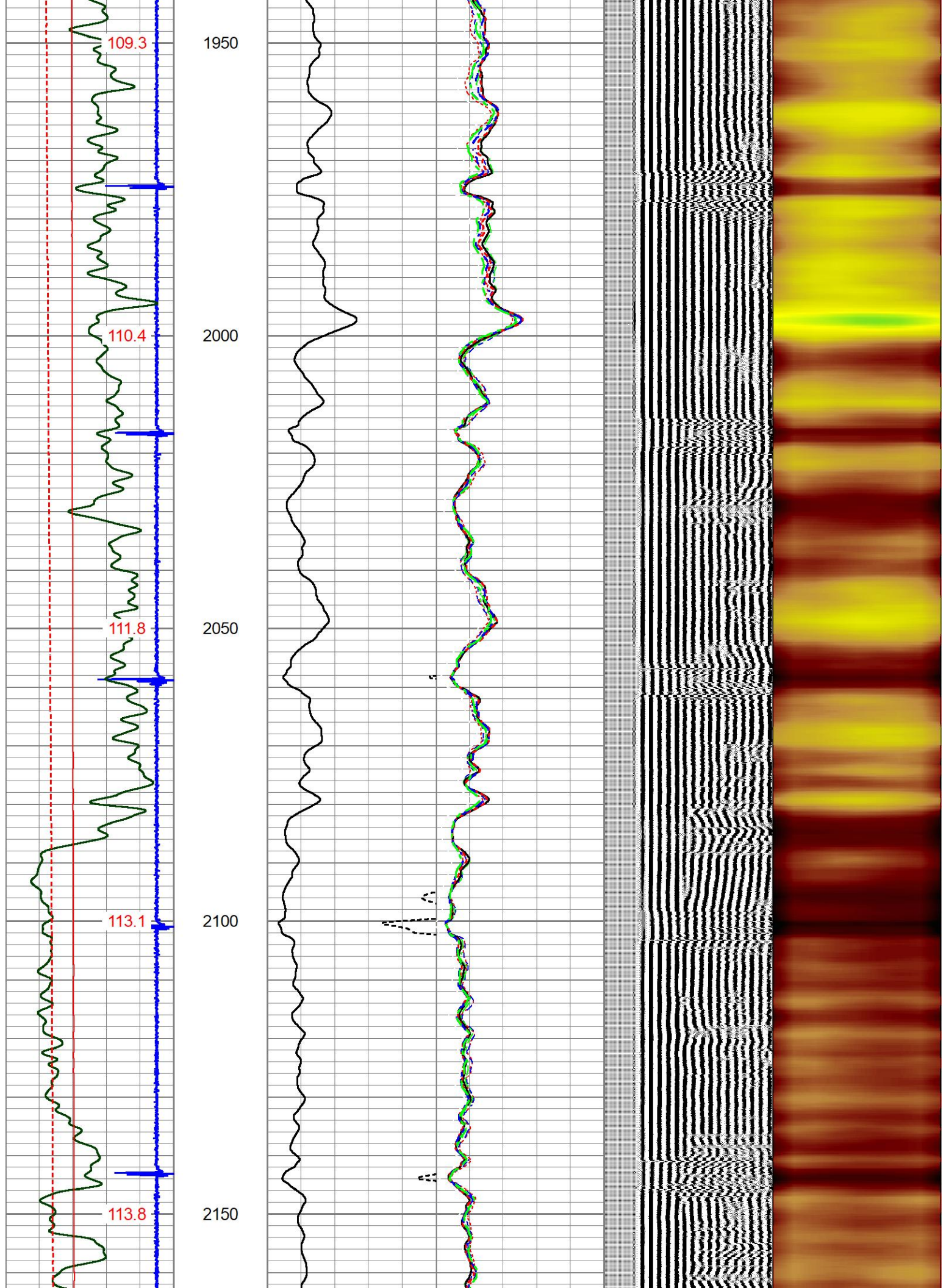


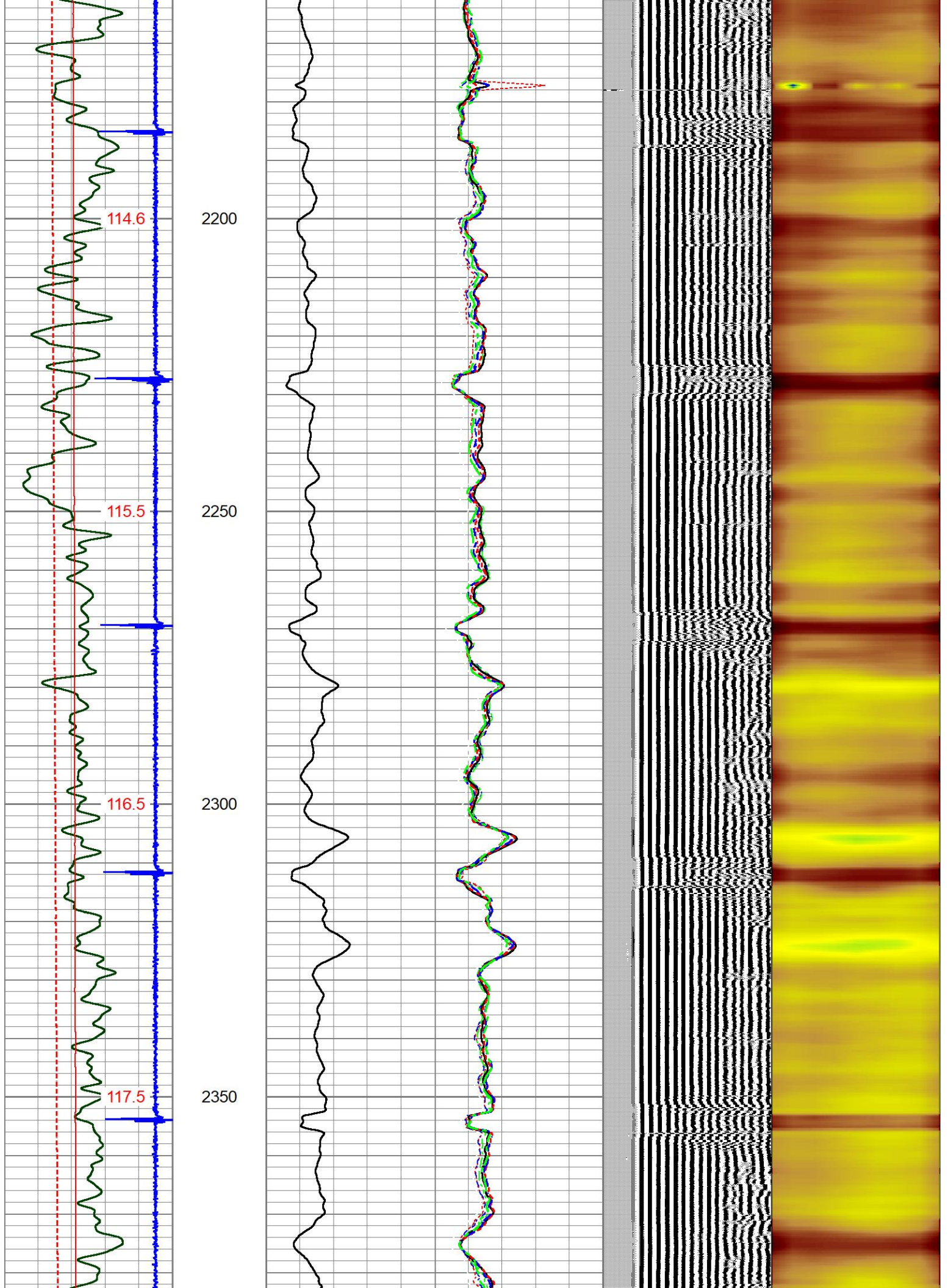


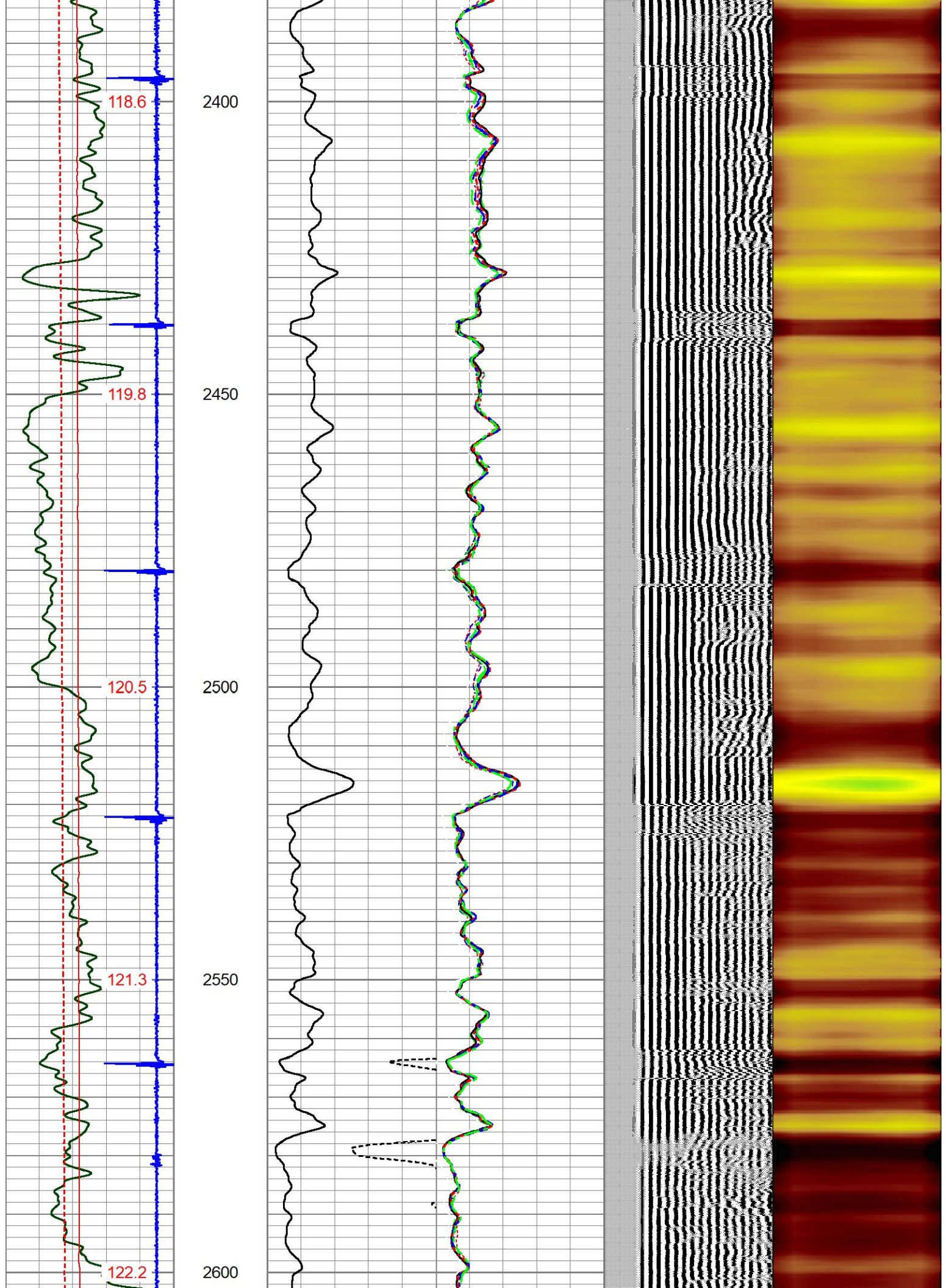


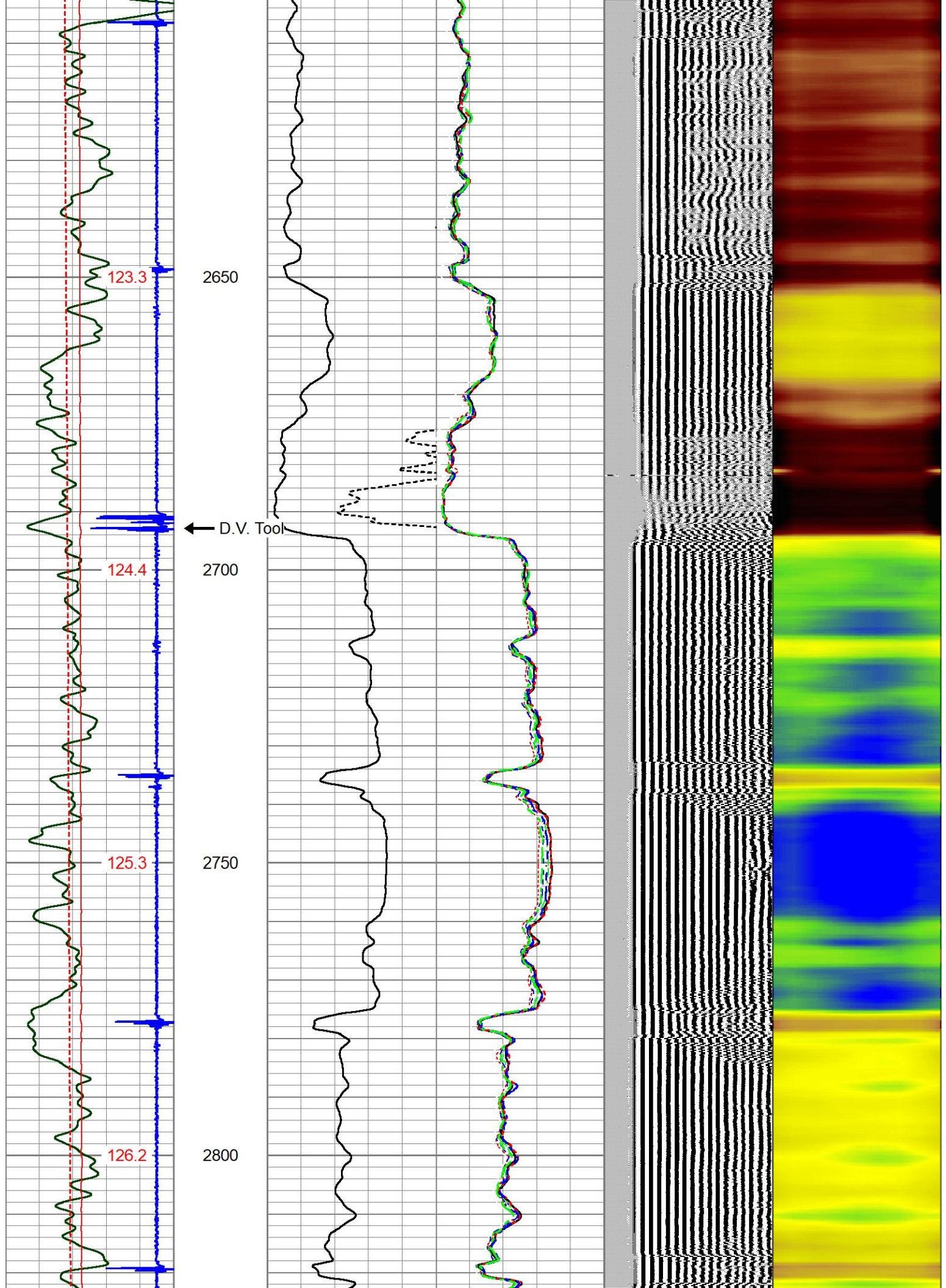


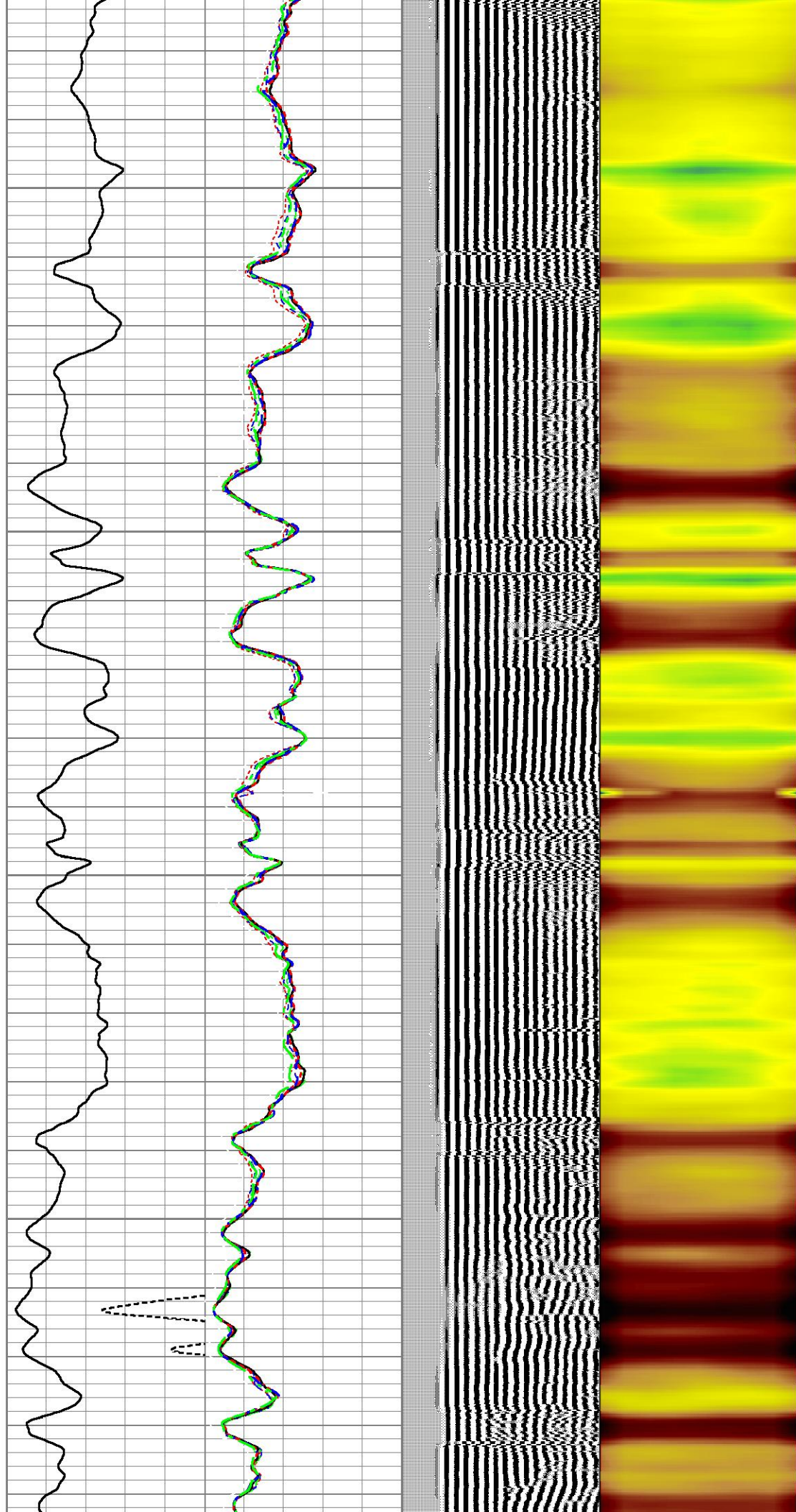
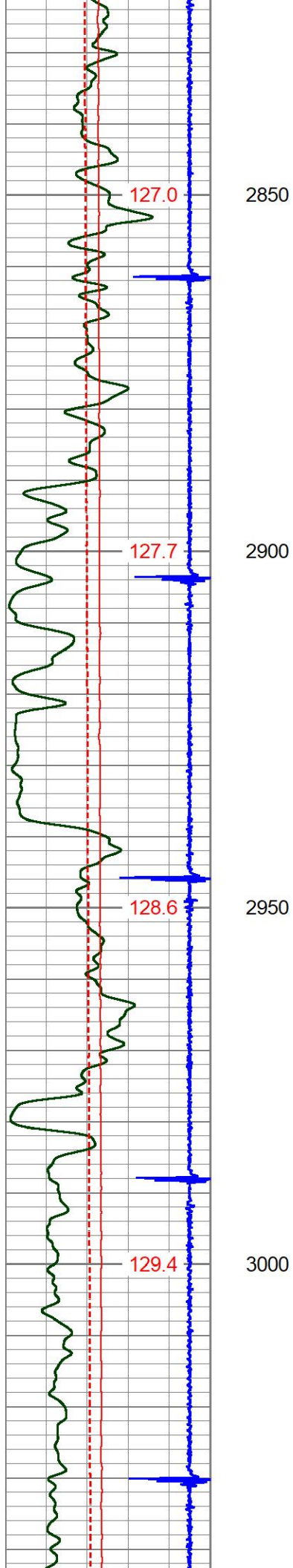


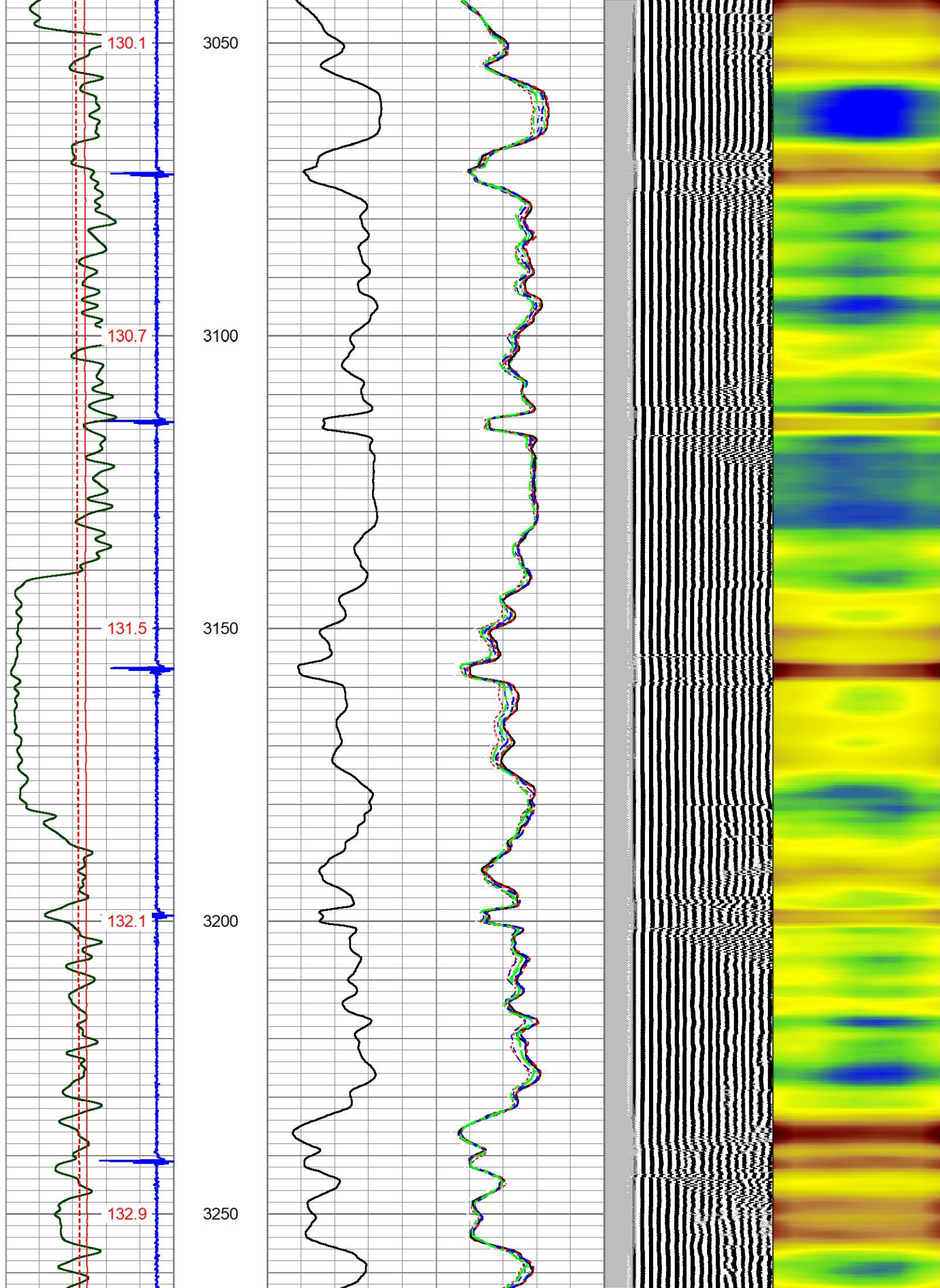


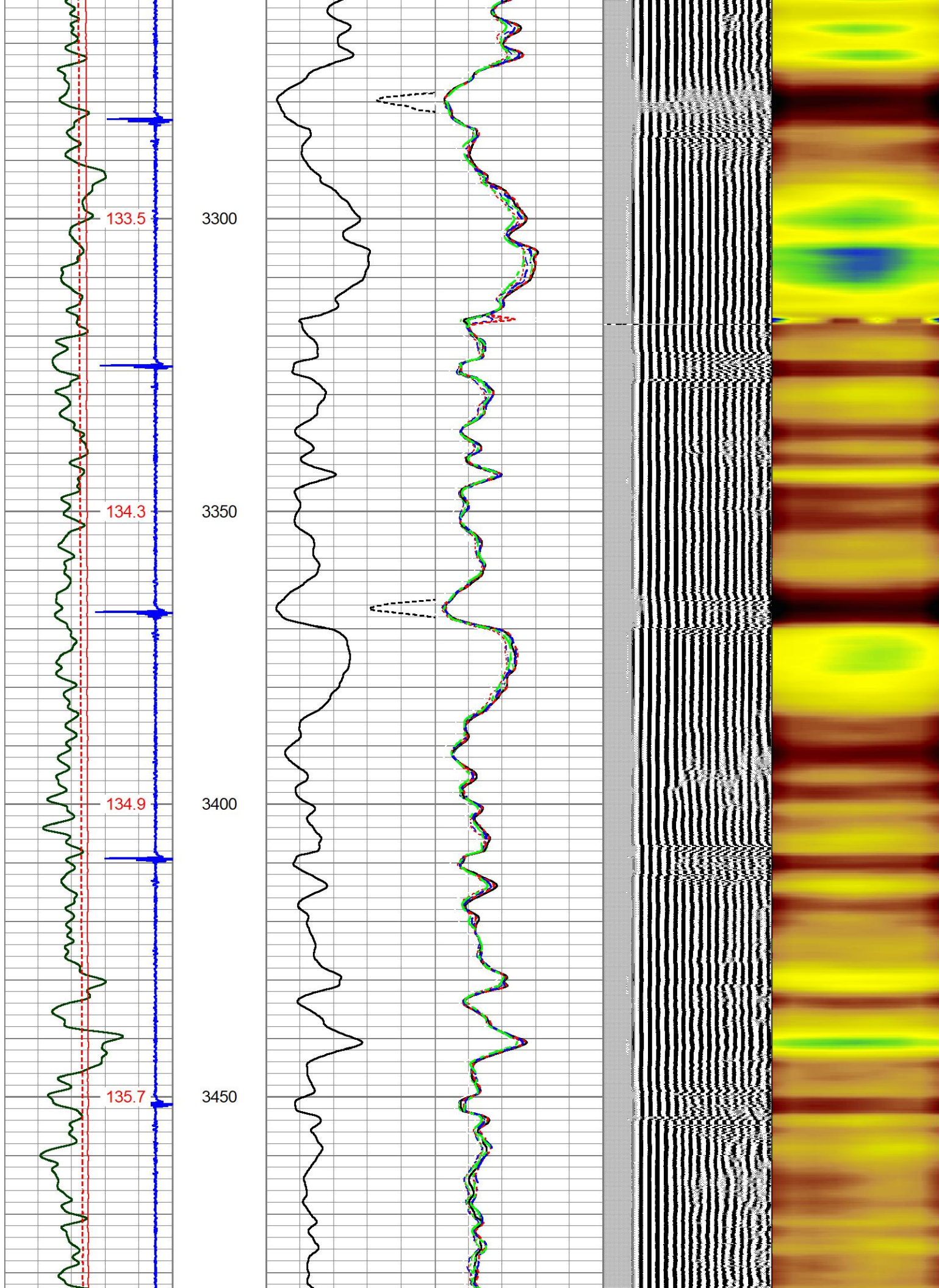


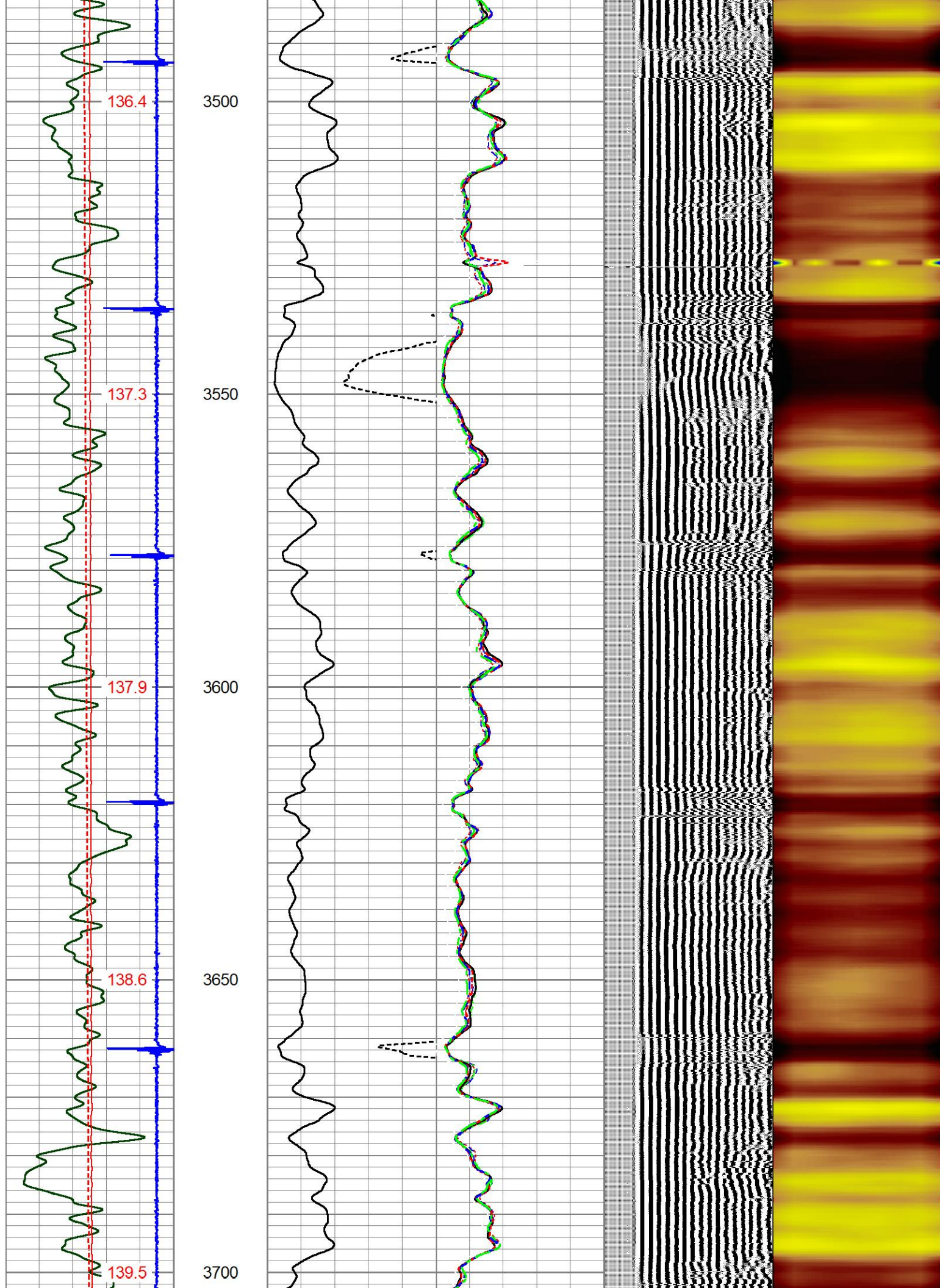


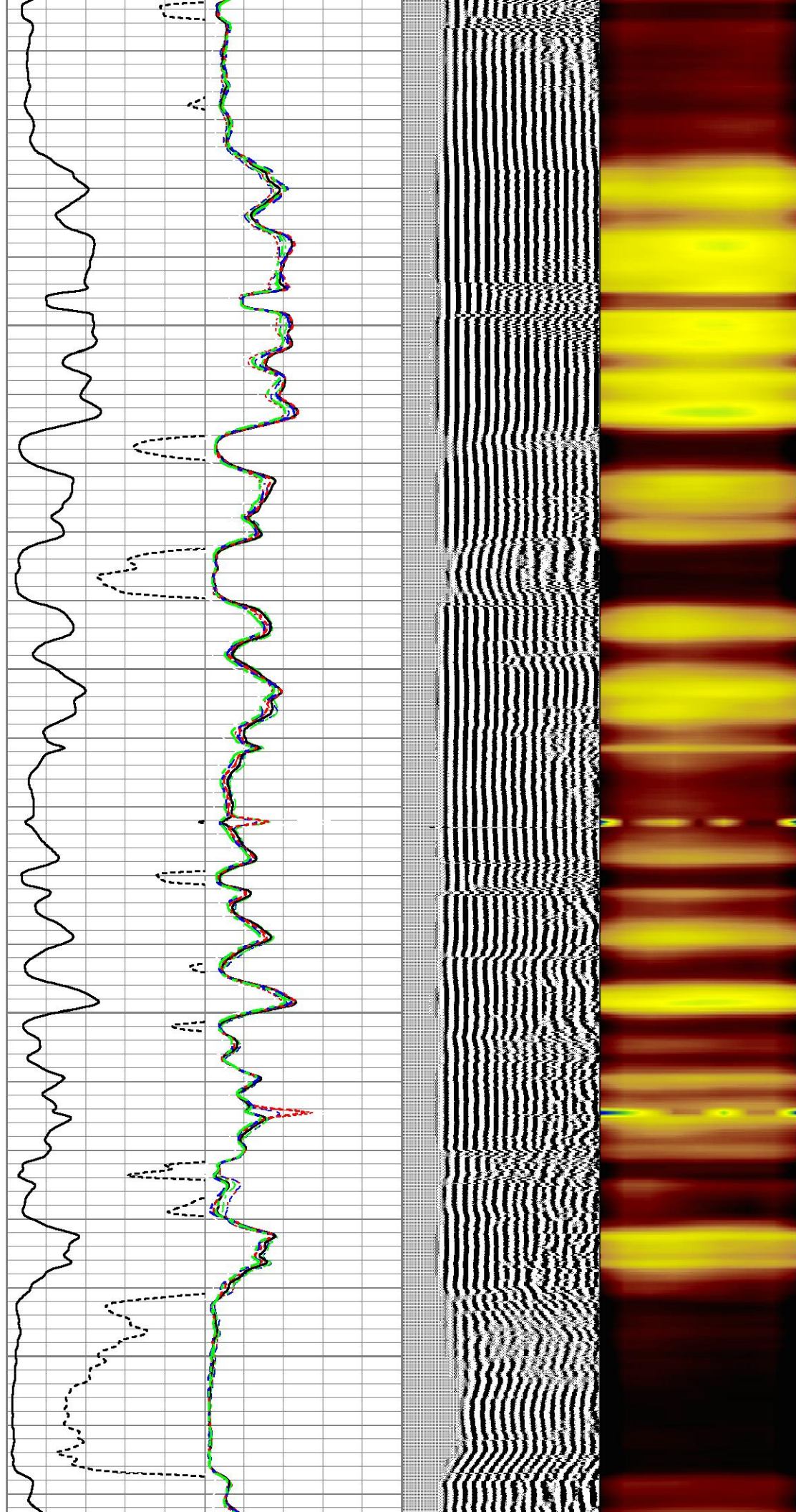
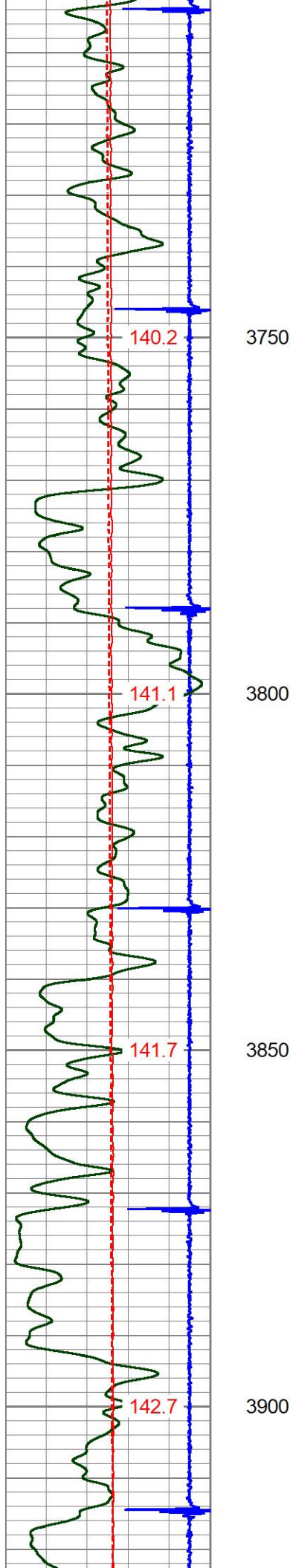


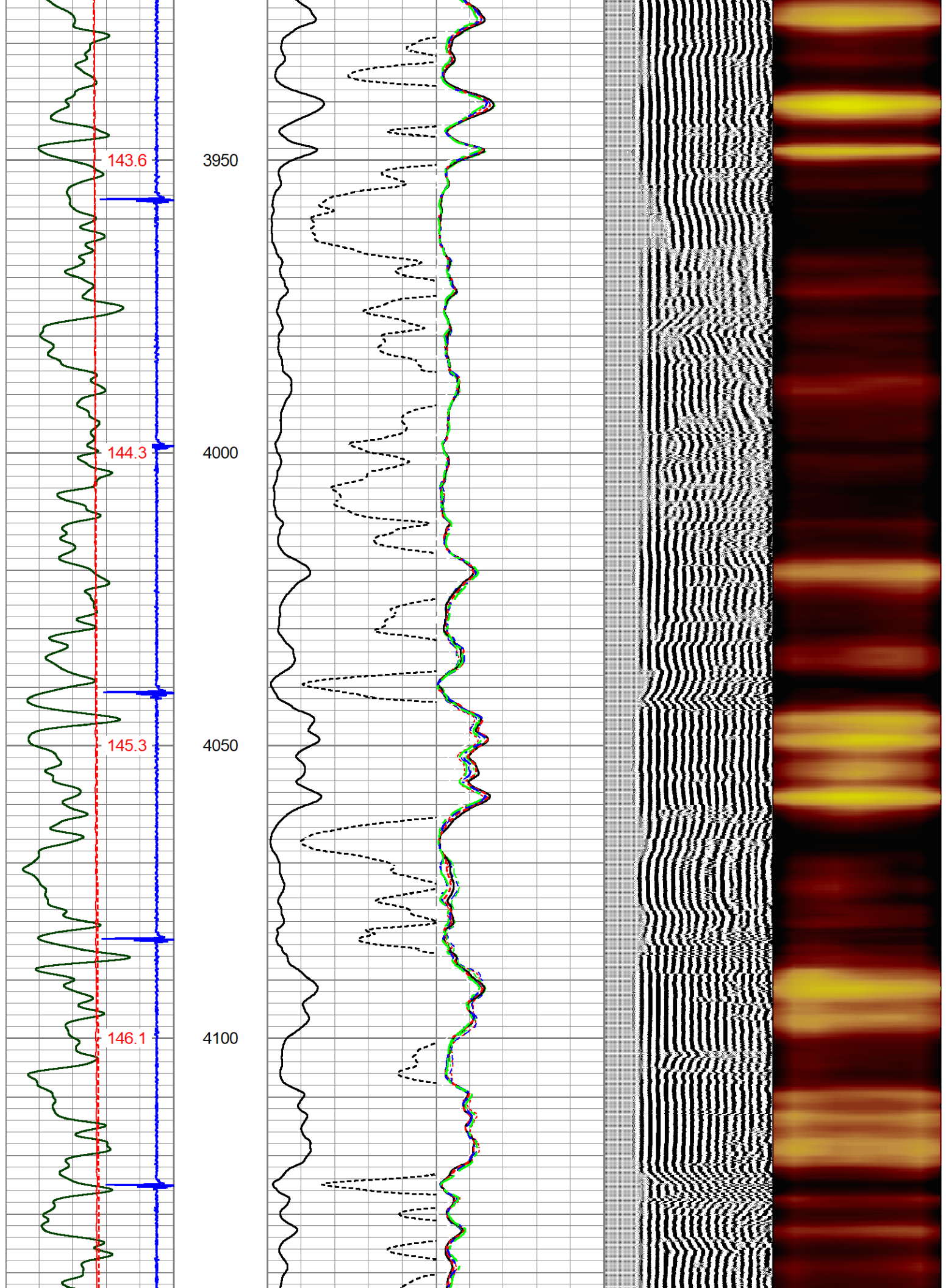


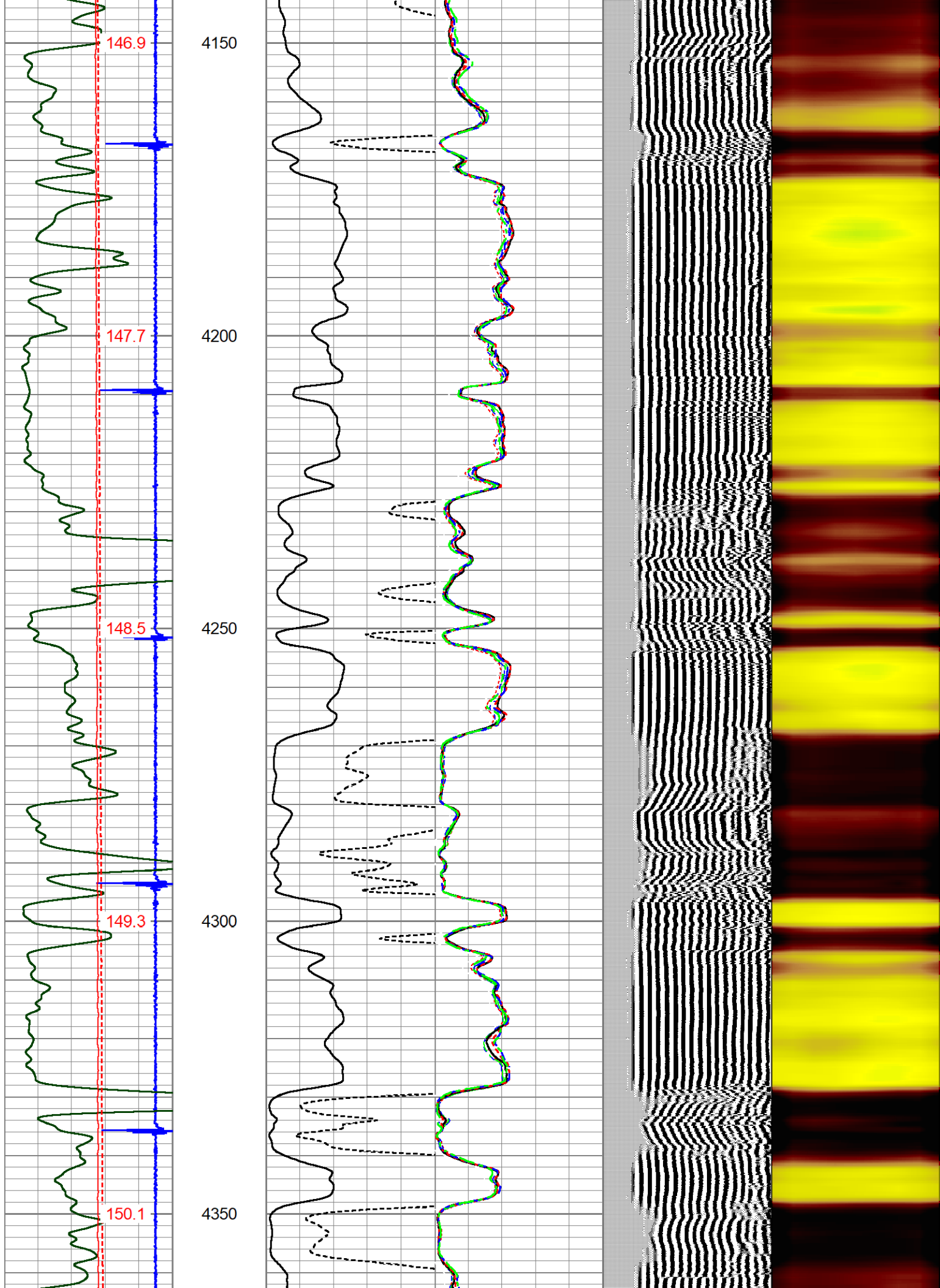


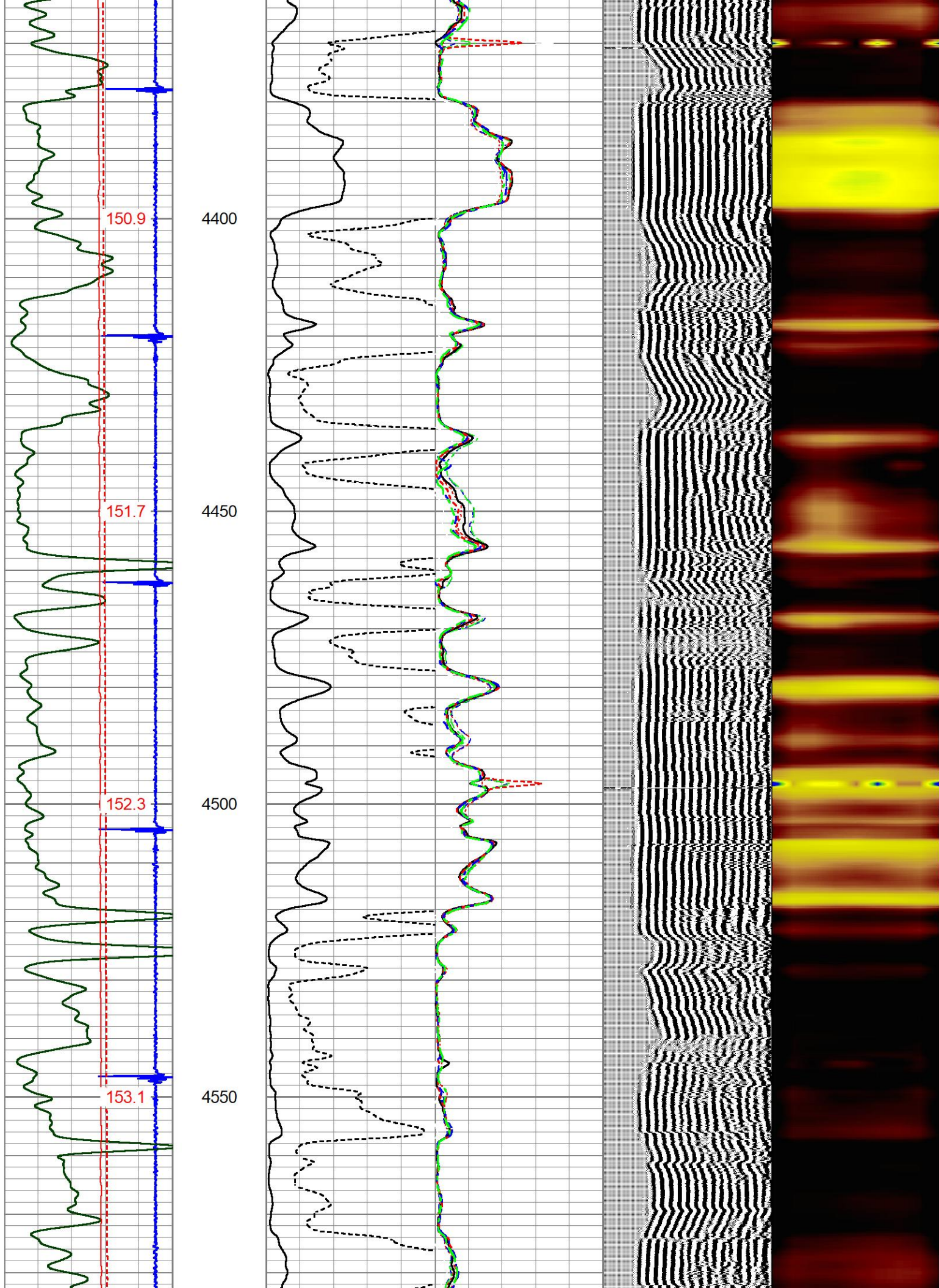


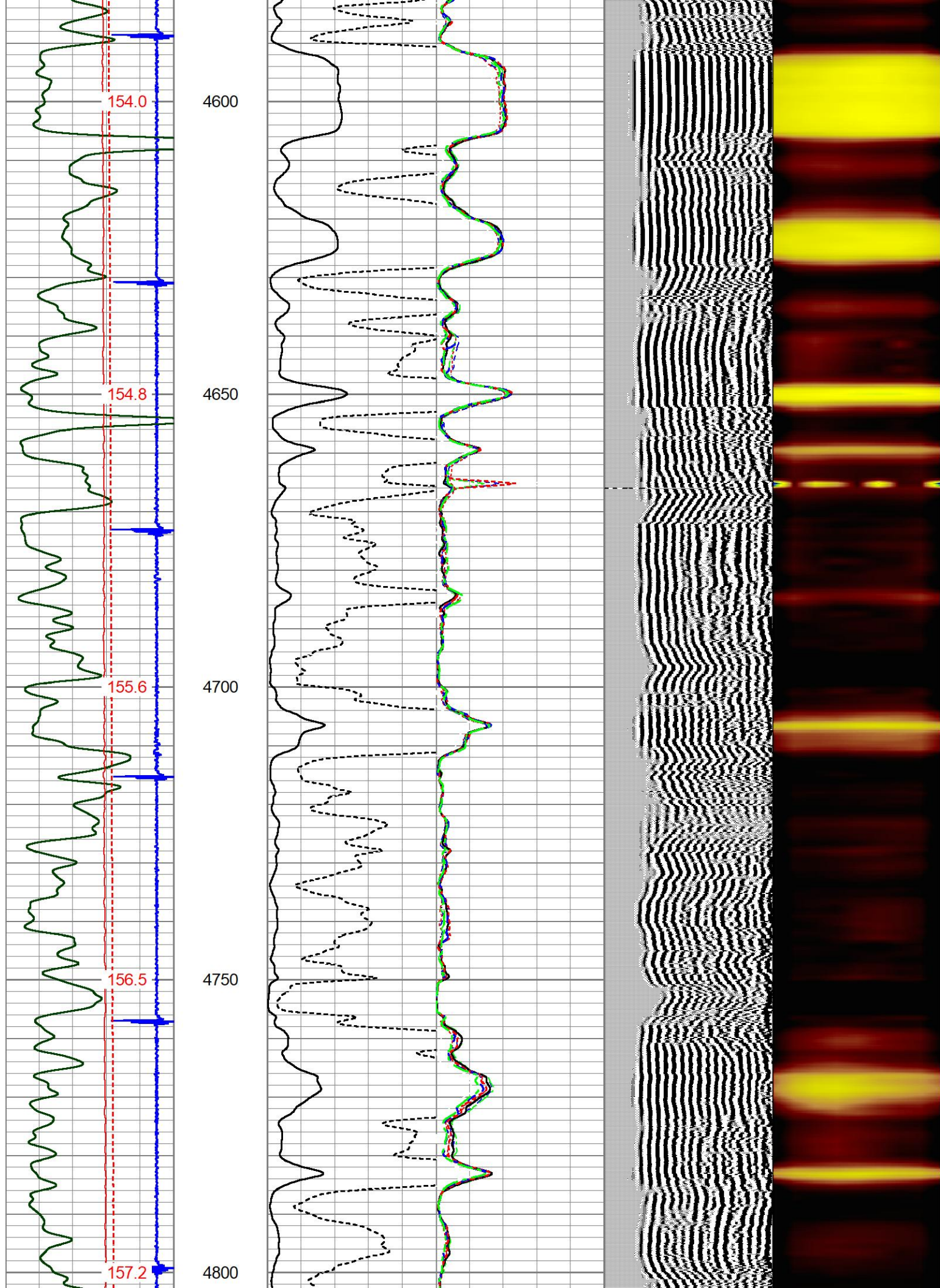


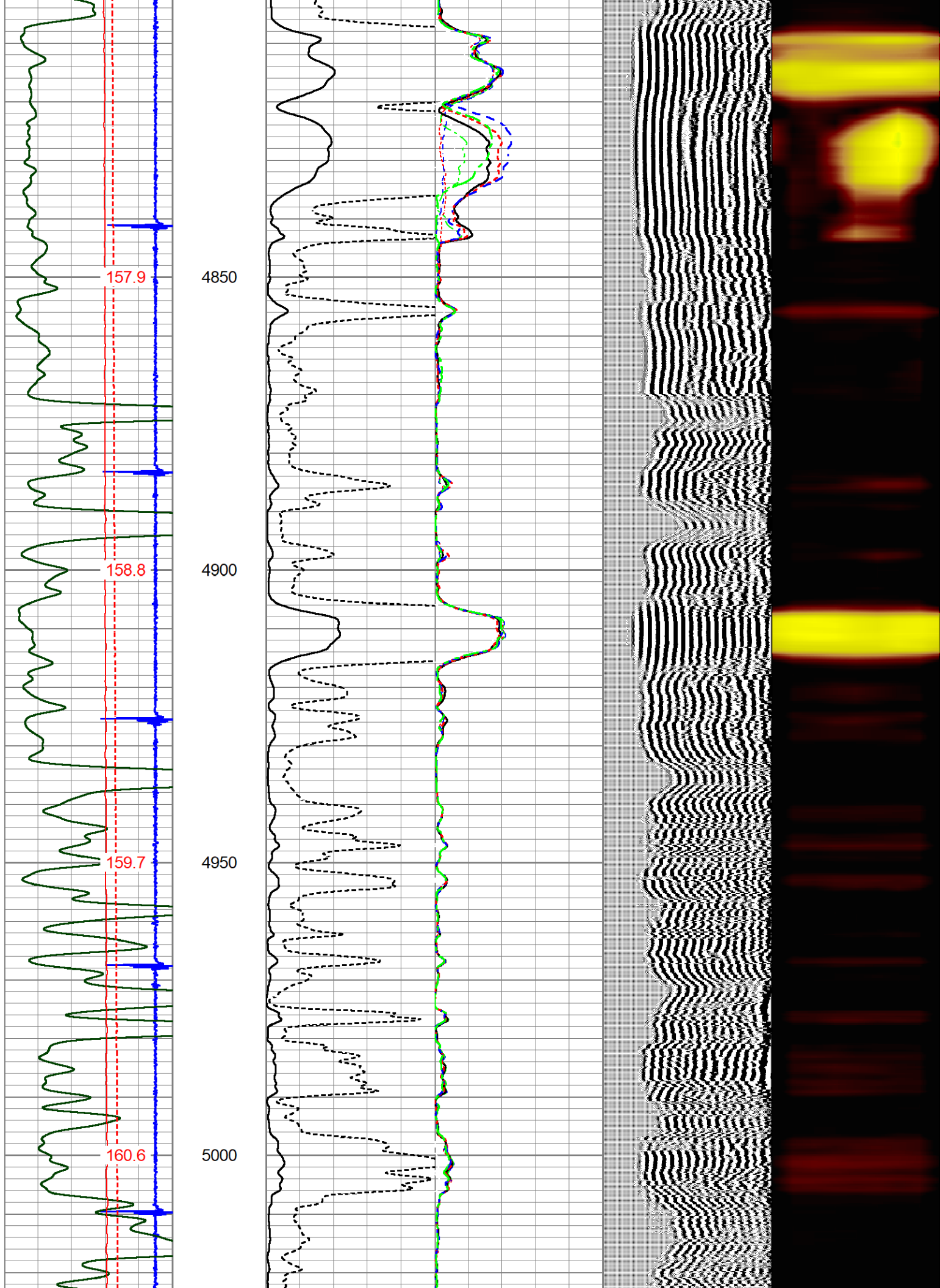


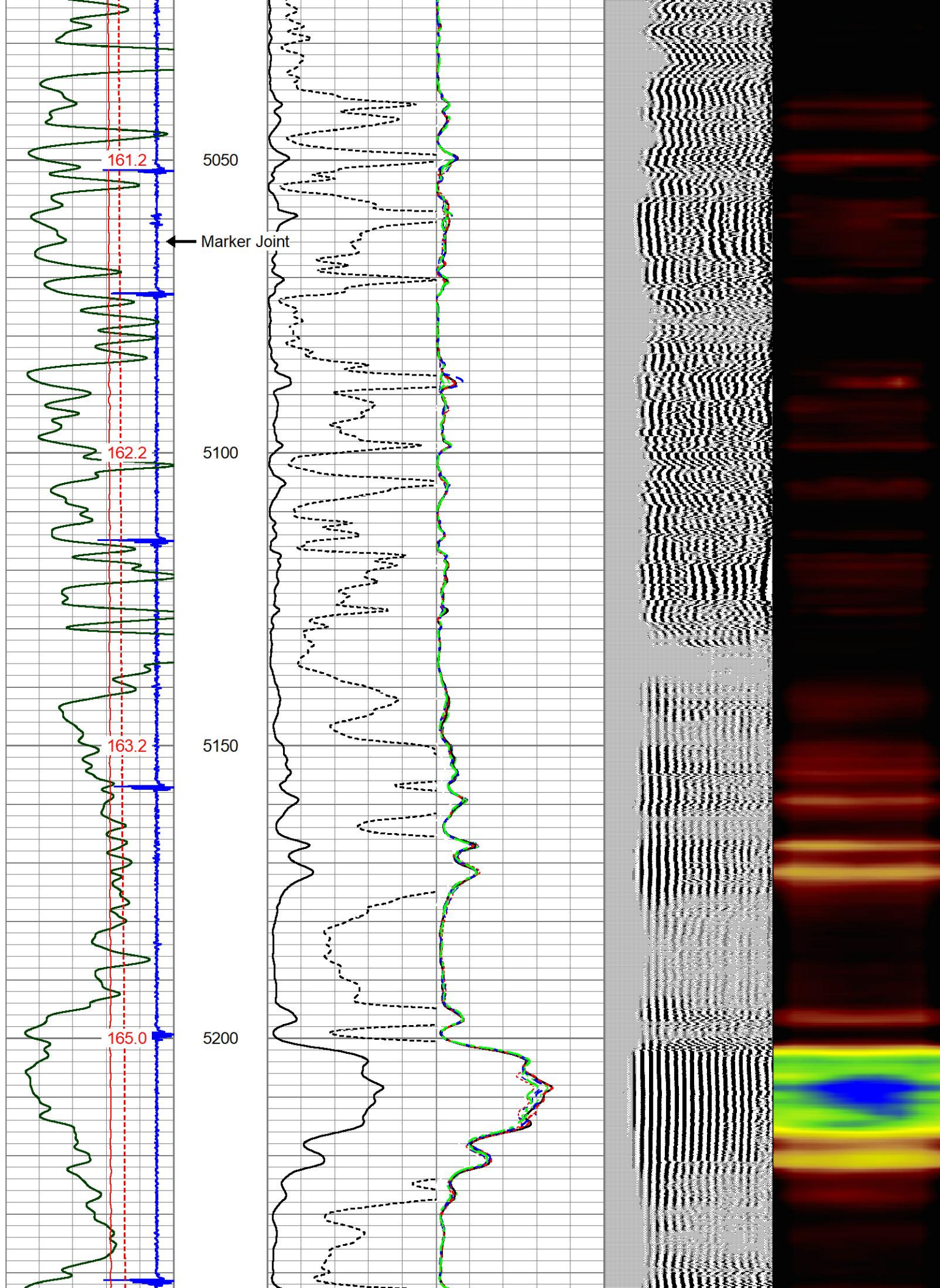


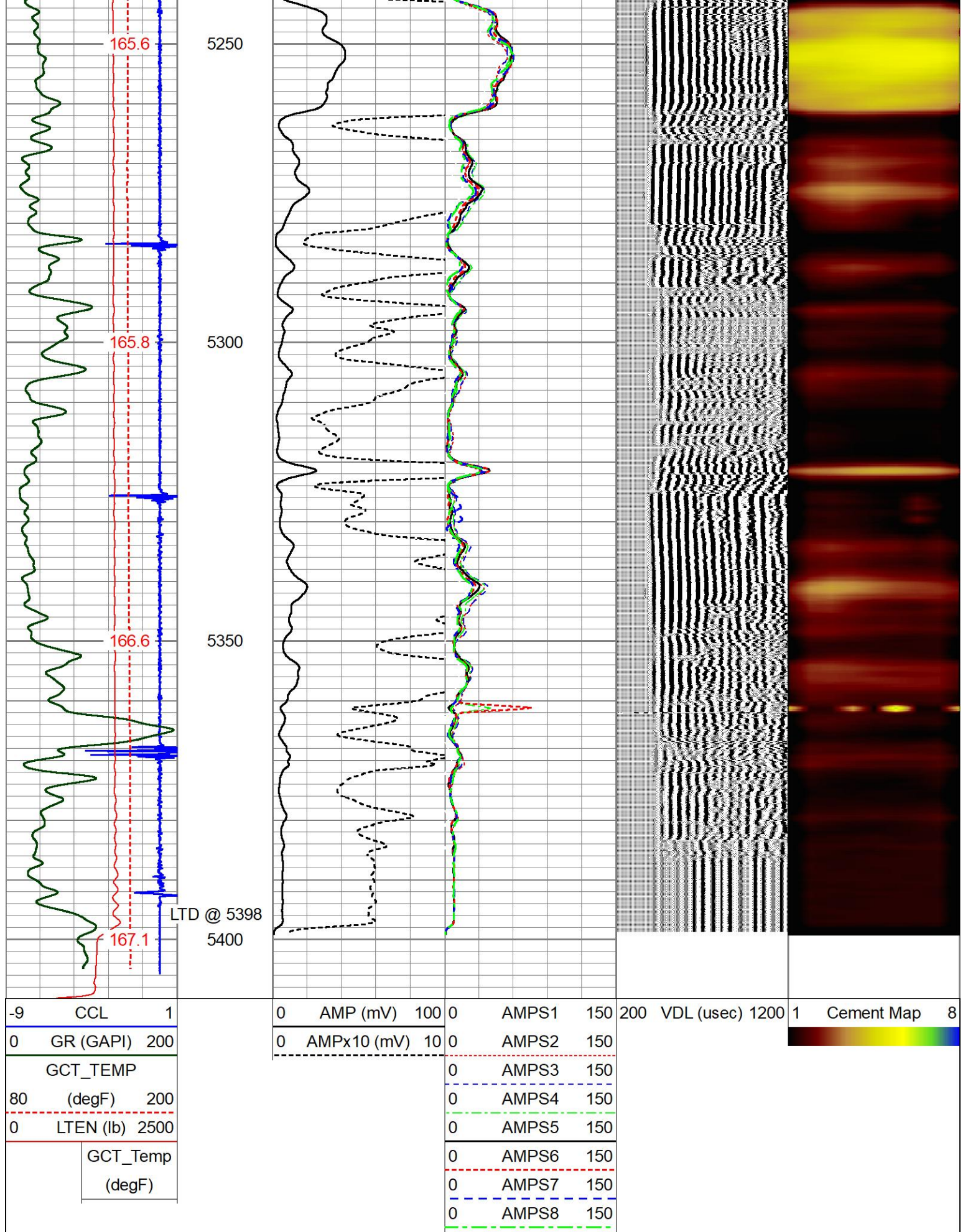












Database File wavetech_harker_family_1_31_22.db
 Dataset Pathname rcbl/pass6
 Presentation Format prb_rbt8
 Dataset Creation Thu Jul 25 16:22:53 2024
 Charted by Depth in Feet scaled 1:240

-9	CCL	1	0	AMP (mV)	100	0	AMPS1	150	200	VDL (usec)	1200	1	Cement Map	8
0	GR (GAPI)	200	0	AMPx10 (mV)	10	0	AMPS2	150						
	GCT_TEMP					0	AMPS3	150						
80	(degF)	200				0	AMPS4	150						
0	TCURR (mA)	100				0	AMPS5	150						
0	LTEN (lb)	2500				0	AMPS6	150						
	GCT_Temp					0	AMPS7	150						
	(degF)					0	AMPS8	150						

