



**RADIAL BOND LOG
WITH GAMMA RAY**

ENERGY SERVICES

Company CHEVRON
Well HORTON D18-20
Field Wattenberg
County Weld **State Colorado**

Comp. CHEVRON
 Well HORTON D18-20
 Field Wattenberg
 Co. Weld
 State Colorado

Location: **API # : 05-123-33694**
 NW/SW

Permanent Datum **GL** **Elevation 4775**
Log Measured From **KB** **13** **Above Perm. Datum**
Drilling Measured From **KB**

SEC 18 **TWP 3N** **RGE 64W**

Other Services
 K.B. 4788
 D.F. 4787
 G.L. 4775

Date of Service	8/28/2024			
Run Number	ONE			
Depth Driller or PBTD	8009			
Depth Logger	708			
Bottom Log Interval	712			
Top Log Interval	SURFACE			
Open Hole Size	7.875			
Type Fluid	WATER			
Fluid Level	Full			
Fluid Density	N/A			
Max. Recorded Temperature	N/A			
Max. Wellhead Pressure	0			
Wellhead Connection	N/A			
Estimated Cement Top	SEE LOG			
Unit Number	5076			
Wireline Size	9/32			
Location	GREELEY CO			
Recorded By	CODY JENSEN			
Witnessed By				
Tubing Record	Size	Wt/Ft	Top	Bottom
Surface Casing	8.625		SURFACE	753
Production Casing	4.5	11.6	SURFACE	8049
Liner Record				

<<< Fold Here >>>

All interpretations are opinions based on inferences from electrical or other measurements and Pioneer Wireline Services, LLC cannot and does not guarantee the accuracy or correctness of any interpretation, and Pioneer Wireline Services, LLC will not be liable or responsible for any loss, costs, damages, or expenses incurred or sustained by anyone resulting from any interpretation made by any of our officers, agents or employees.

Comments

N/A DENOTES NOT AVAILABLE OR NON-APPLICABLE.

THANK YOU FOR USING PIONEER ENERGY SERVICES!

Your Pioneer Energy Services Crew	Tool Data - Services	Serial Number
Engineer: Operator: Operator: Operator:		

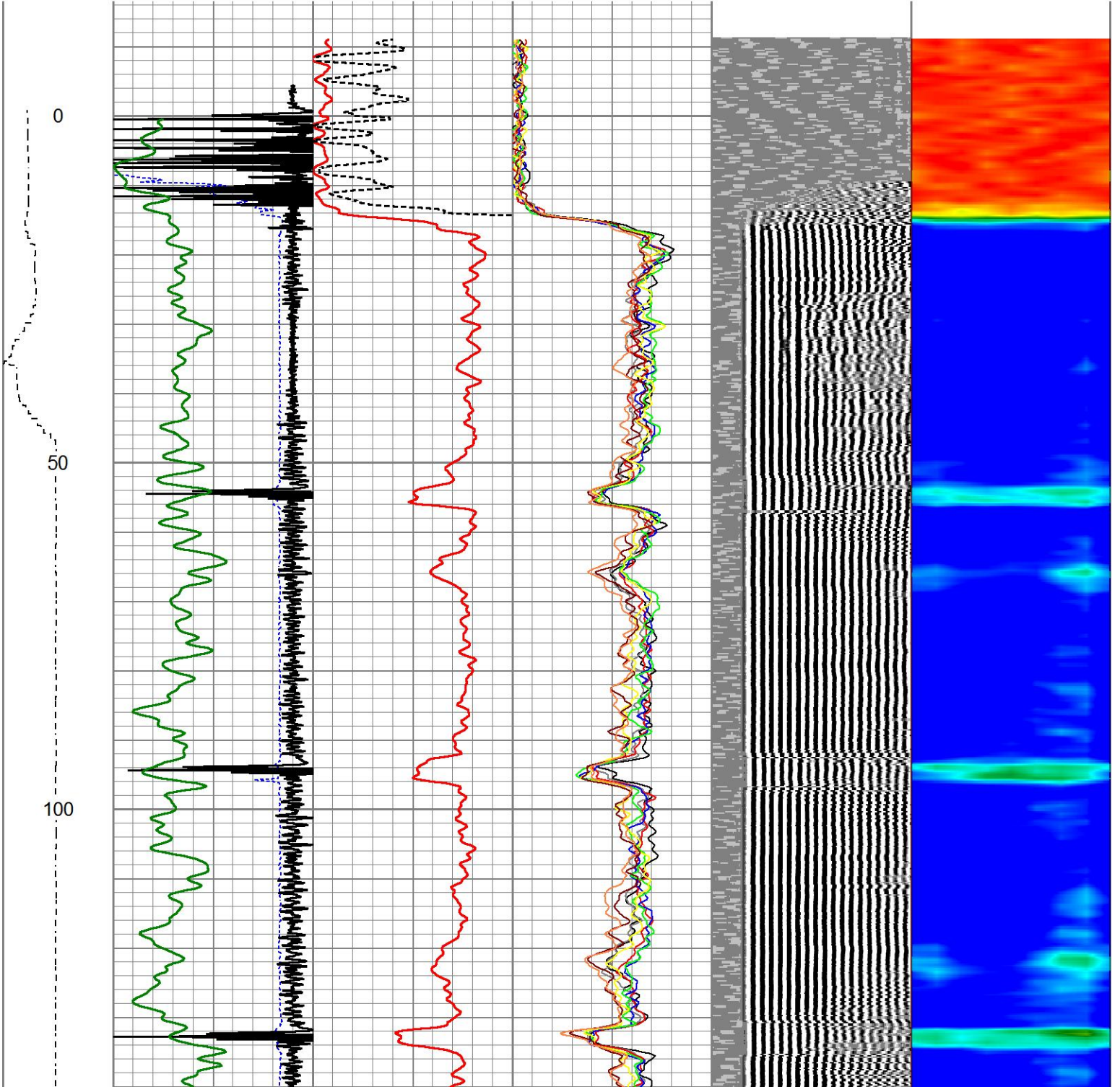
Operator	Offset (ft)	Substrate	Description	Length (ft)	O.D. (in)	Weight (lb)
----------	-------------	-----------	-------------	-------------	-----------	-------------

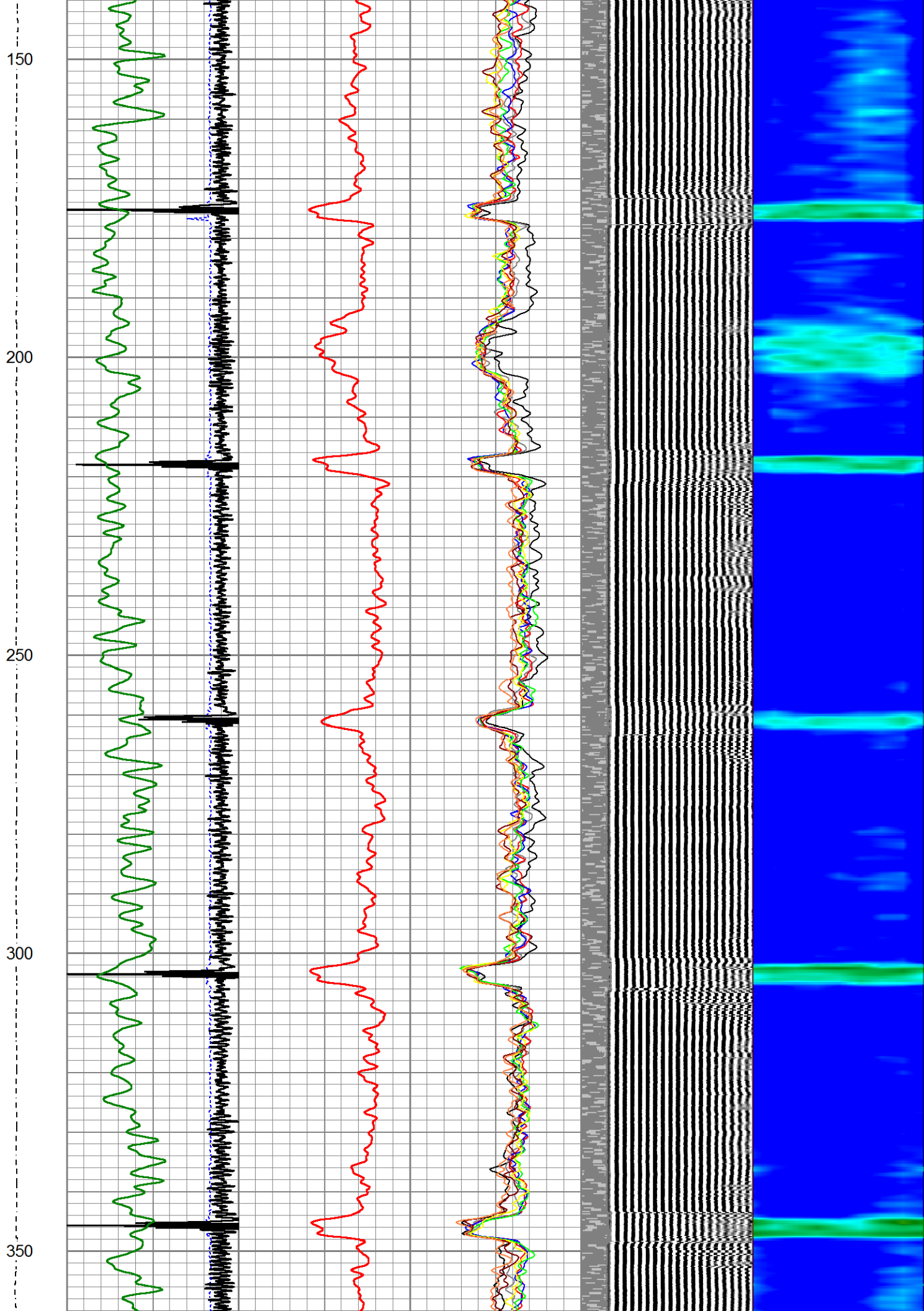
Sensor	Offset (ft)	Schematic	Description	Length (ft)	O.D. (in)	Weight (lb)	
			CHD-1_11/16_Cablehead 1 11/16 Cablehead	1.00	1.68	5.00	
			CENT-1.69variable 1.69" Centrilizer Variable Length	2.88	1.69	15.00	
HEADVOLT	16.78						
Temp	13.93						
				RBT-27SBT10 (Greeley Ext Temp) Probe 2.75" Radial with Integral Temperature Sub	9.39	2.75	
WVFS8	11.69						
WVFS7	11.69						
WVFS6	11.69						
WVFS5	11.69						
WVFS4	11.69						
WVFS3	11.69						
WVFS2	11.69						
WVFS1	11.69						
WVF3FT	11.69						
WVF5FT	10.69						
WVFCAL	7.44						
HEADVOLT	7.44						
			CENT-1.69variable 1.69" Centrilizer Variable Length	2.88	1.69	15.00	
CCL	3.63						
			GR-27GRL10 (27GRL10-XXXX) 2-3/4" Probe Gamma Ray	4.56	2.75	50.00	
GR	0.89						

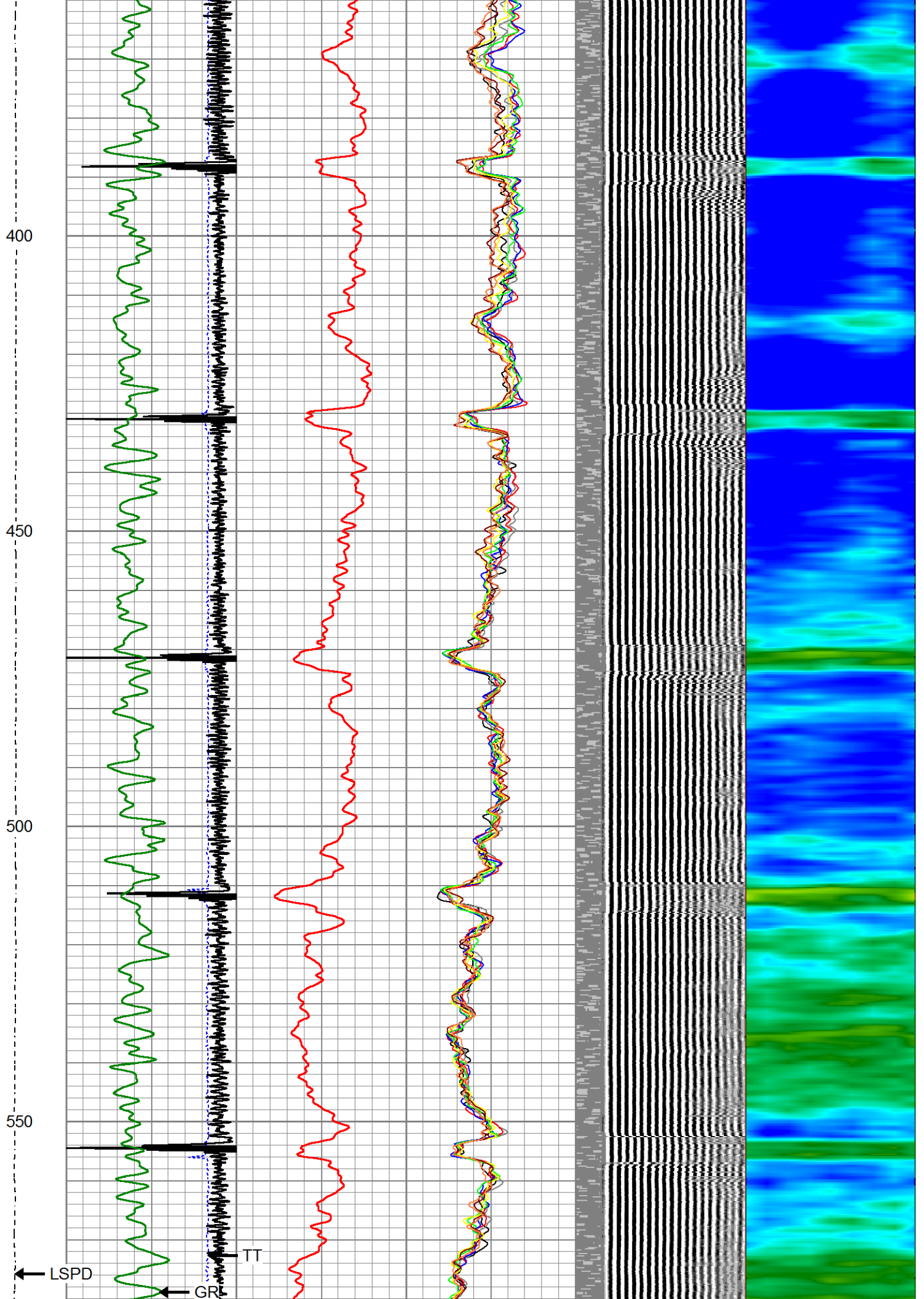
Dataset: horton d18-20d.db: field/well/run1/pass7
 Total length: 20.71 ft
 Total weight: 85.00 lb
 O.D.: 2.75 in

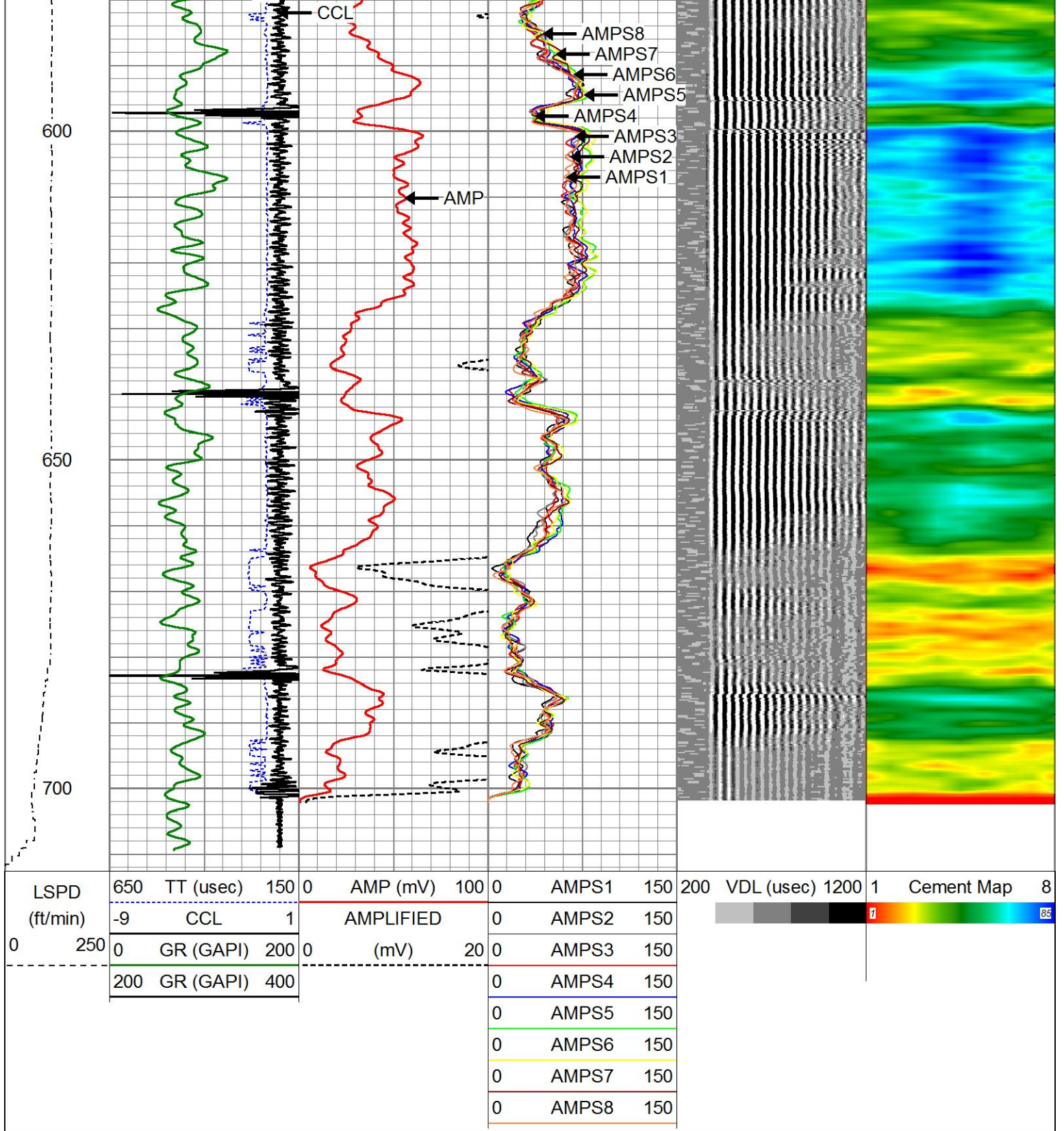
Database File horton d18-20d.db
 Dataset Pathname pass7
 Presentation Format ips_rbtcolorcivitas
 Dataset Creation Wed Aug 28 11:41:36 2024
 Charted by Depth in Feet scaled 1:240

LSPD	650	TT (usec)	150	0	AMP (mV)	100	0	AMPS1	150	200	VDL (usec)	1200	1	Cement Map	8
(ft/min)	-9	CCL	1		AMPLIFIED		0	AMPS2	150						
0	250	0	GR (GAPI)	200	0	(mV)	20	0	AMPS3	150					
		200	GR (GAPI)	400				0	AMPS4	150					
								0	AMPS5	150					
								0	AMPS6	150					
								0	AMPS7	150					
								0	AMPS8	150					









Calibration Report

Database File horton d18-20d.db
 Dataset Pathname pass7
 Dataset Creation Wed Aug 28 11:41:36 2024

Gamma Ray Calibration Report

Serial Number: 27GRL10-XXXX
 Tool Model: 27GRL10
 Performed: (Not Performed)

Calibrator Value: 1.0 GAPI

Background Reading: 0.0 cps
 Calibrator Reading: 1.0 cps
 Sensitivity: 1.0000 GAPI/cps

Segmented Cement Bond Log Calibration Report

Serial Number: Greeley Ext Temp
 Tool Model: 27SBT10
 Calibration Casing Diameter: 4.500 in
 Calibration Depth: 341.679 ft

Master Calibration, performed Wed Aug 28 11:38:51 2024:

	Raw (v)		Calibrated (mv)		Results	
	Zero	Cal	Zero	Cal	Gain	Offset
3'	0.000	0.957	0.800	81.196	83.995	0.800
CAL	0.000	1.648				
5'	0.000	0.841	0.800	81.196	95.582	0.800
SUM						
S1	0.000	0.844	0.000	100.000	118.450	0.000
S2	0.000	1.013	0.000	100.000	98.739	0.000
S3	0.000	1.042	0.000	100.000	95.984	0.000
S4	0.000	0.997	0.000	100.000	100.301	0.000
S5	0.000	0.917	0.000	100.000	109.107	0.000
S6	0.000	0.922	0.000	100.000	108.440	0.000
S7	0.000	0.949	0.000	100.000	105.399	0.000
S8	0.000	0.989	0.000	100.000	101.091	0.000

Internal Reference Calibration, performed (Not Performed):

	Raw (v)		Calibrated (v)		Results	
	Zero	Cal	Zero	Cal	Gain	Offset
CAL	0.000	0.000	0.000	1.648	1.000	0.000

Air Zero Calibration, performed Mon Aug 05 11:02:31 2024:

	Raw (v)		Calibrated (v)		Results	
	Zero		Zero		Gain	Offset
3'	0.000		0.000			0.000
5'	0.000		0.000			0.000
SUM						
S1	0.000		0.000			0.000
S2	0.000		0.000			0.000
S3	0.000		0.000			0.000
S4	0.000		0.000			0.000
S5	0.000		0.000			0.000
S6	0.000		0.000			0.000
S7	0.000		0.000			0.000
S8	0.000		0.000			0.000



Company CHEVRON
 Well HORTON D18-20
 Field Wattenberg

ENERGY SERVICES

County

Weld

State

Colorado