

TABLE 1
FIELD DATA SUMMARY TABLE
NOBLE 100322
MCKAY FEDERAL AB02-14, WELD COUNTY, COLORADO
REM # 29868

Sample ID	Sample Date	Depth	GPS Data Latitude/Longitude		PDOP Value	VOC Concentration (ppm)
WH FL02 - 4FT	10/16/2024	4	40.5966030	-104.51799	-	254.6
SEP FL01 - 4FT	10/16/2024	4	40.5969957	-104.51802	-	0.4

1. Global Positioning System (GPS) data is provided in decimal degrees using North American Datum (NAD) 83 UTMZone 13 North.

2. Volatile organic compound (VOC) concentrations are measured in the field using a photoionization detector (PID).

PDOP = Position Dilution of Precision

ppm = Parts per million

in. = Inches

ft. = Feet

bgs = Below ground surface

= Source material characterization sample, excavated and transported off site for disposal.

= Material excavated and transported off site for disposal.

TABLE 2
SUMMARY OF VOLATILE ORGANIC SOIL CHEMISTRY DATA
NOBLE 100322
MCKAY FEDERAL AB02-14, WELD COUNTY, COLORADO
REM # 29868

Sample ID	Sample Date	Depth (ft)	Benzene (mg/kg)	Toluene (mg/kg)	Ethyl-Benzene (mg/kg)	Xylenes (mg/kg)	1,2,4- Trimethyl- Benzene (mg/kg)	1,3,5- Trimethyl- Benzene (mg/kg)	Naphthalene (mg/kg)	TPH (mg/kg)	TPH GRO (mg/kg)	TPH DRO (mg/kg)	TPH ORO (mg/kg)
ECMC Table 915-1 Limits (Residential SSL)			1.2	490	5.8	58	30	27	2	500	500**		
ECMC Table 915-1 Limits (Protection of Groundwater SSL)			0.0026	0.69	0.78	9.9	0.0081	0.0087	0.0038	500	500**		
WH FL02 - 4FT	10/16/2024	4	<0.0020	<0.0050	<0.0050	<0.010	0.063	<0.0050	0.046	2900	9.7	2400	490
SEP FL01 - 4FT	10/16/2024	4	<0.0020	<0.0050	<0.0050	<0.010	<0.0050	<0.0050	<0.0038	<500	<0.50	<50	<50

1. Bold values exceed the ECMC Table 915-1 limit(s)
 2. Red & blue highlighted soil analytical values indicate an exceedance of the referenced soil screening level (SSL)
 3. * Indicates laboratory minimum detection limit in excess of SSL
 4. ** Summation of GRO+DRO+ORO must be less than 500 mg/kg
- NA - Not analyzed

= Source material characterization sample, excavated and transported off site for disposal.

= Material excavated and transported off site for disposal.

TABLE 3
SUMMARY OF POLYCYCLIC AROMATIC HYDROCARBON SOIL CHEMISTRY DATA
NOBLE 100322
MCKAY FEDERAL AB02-14, WELD COUNTY, COLORADO
REM # 29868

Sample ID	Sample Date	Depth (ft)	Acenaphthene (mg/kg)	Anthracene (mg/kg)	Benzo (a) Anthracene (mg/kg)	Benzo (a) Pyrene (mg/kg)	Benzo (b) Fluoranthene (mg/kg)	Benzo (k) Fluoranthene (mg/kg)	Chrysene (mg/kg)	Dibenzo (a,h) Anthracene (mg/kg)	Fluoranthene (mg/kg)	Fluorene (mg/kg)	Indeno (1,2,3- cd) Pyrene (mg/kg)	Pyrene (mg/kg)	1-Methyl - Naphthalene (mg/kg)	2-Methyl- Naphthalene (mg/kg)
ECMC Table 915-1 Limits (Residential SSL)			360	1800	1.1	0.11	1.1	11	110	0.11	240	240	1.1	180	18	24
ECMC Table 915-1 Limits (Protection of Groundwater SSL)			0.55	5.8	0.011	0.24	0.3	2.9	9	0.096	8.9	0.54	0.98	1.3	0.006	0.019
WH FL02 - 4FT	10/16/2024	4	<0.00500	0.508	0.895	0.311	0.597	0.255	1.00	0.101	2.85	0.311	0.267	2.32	<0.00500	<0.00500
SEP FL01 - 4FT	10/16/2024	4	<0.00500	<0.00500	0.0198	0.00938	0.0209	0.00615	0.0226	<0.00500	0.051	<0.00500	0.0057	0.042	<0.00500	<0.00500

1. Bold values exceed the ECMC Table 915-1 limit(s)

2. Red & blue highlighted soil analytical values indicate an exceedance of the referenced soil screening level (SSL)

3. * Indicates laboratory minimum detection limit in excess of SSL

NA - Not analyzed

= Source material characterization sample, excavated and transported off site for disposal.

= Material excavated and transported off site for disposal.

TABLE 4
SUMMARY OF SOIL SUITABILITY FOR RECLAMATION
NOBLE 100322
MCKAY FEDERAL AB02-14, WELD COUNTY, COLORADO
REM # 29868

Sample ID	Sample Date	Depth (ft)	pH (Standard Units)	EC (mmhos/cm)	SAR (Standard Units)	Boron (mg/L)
ECMC Table 915-1 Soil Suitability Limits			6 - 8.3	<4	<6	2
WH FL02 - 4FT	10/16/2024	4	9.23	0.356	0.723	<2.00
SEP FL01 - 4FT	10/16/2024	4	9.35	0.111	0.105	<2.00

1. Bold faced values exceed the ECMC Table 915-1 limit(s)

2. Blue highlighted soil analytical values indicate a regulatory exceedance

NA - Not analyzed

= Source material characterization sample, excavated and transported off site for disposal.

= Material excavated and transported off site for disposal.

TABLE 5
SUMMARY OF METALS IN SOIL CHEMISTRY DATA
NOBLE 100322
MCKAY FEDERAL AB02-14, WELD COUNTY, COLORADO
REM # 29868

Sample ID	Sample Date	Depth (ft)	Arsenic (mg/kg)	Barium (mg/kg)	Cadmium (mg/kg)	Chromium (VI) (mg/kg)	Copper (mg/kg)	Lead (mg/kg)	Nickel (mg/kg)	Selenium (mg/kg)	Silver (mg/kg)	Zinc (mg/kg)
ECMC Table 915-1 Limits (Residential SSL)			0.68	15000	71	0.3	3100	400	1500	390	390	23000
ECMC Table 915-1 Limits (Protection of Groundwater SSL)			0.29	82	0.38	0.00067	46	14	26	0.26	0.8	370
WH FL02 - 4FT	10/16/2024	4	2.15	50.5	0.262	<0.30	10.3	13.8	6.15	<0.260	0.0702	22.4
SEP FL01 - 4FT	10/16/2024	4	3.27	59.8	0.201	<0.30	6.24	6.41	5.61	0.276	0.0210	22.2

1. Bold values exceed the ECMC Table 915-1 limit(s)

2. Red & blue highlighted soil analytical values indicate an exceedance of the referenced soil screening level (SSL)

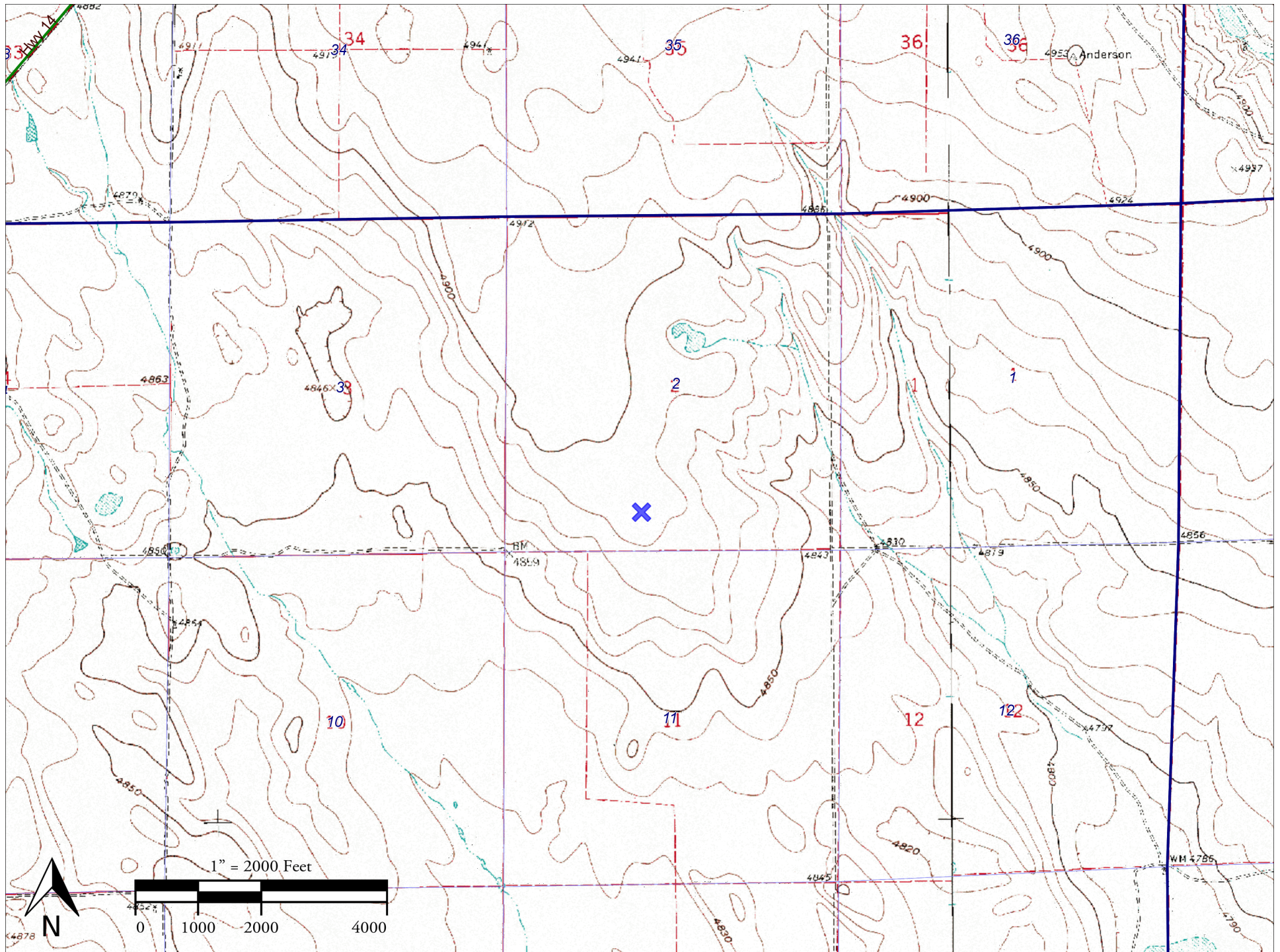
* Indicates laboratory minimum detection limit in excess of SSL

NA - Not analyzed

= Source material characterization sample, excavated and transported off site for disposal.

= Material excavated and transported off site for disposal.

Noble - McKay Federal AB2-14



MCKAY FEDERAL AB02-14

SESW Sec. 2 T7N, R64W

API#: 05-123-31495

40.5969957, -104.5180212

Remediation Project #: 29868

Legend

- Impacted Sample Location
- Multiphase
- Sample Location

Proposed
Excavation
Extents:
20'x20'x5' deep
(Not to scale)

SEP FL01-4FT



CMH FL02-4FT



300 ft

Google Earth

Image © 2024 Airbus

Photo Log



Description:

#1- SEP FL01-4FT- No visual staining or odor

Photo Log



Description:

#2- WH FL02-4FT- Visual staining, strong odor