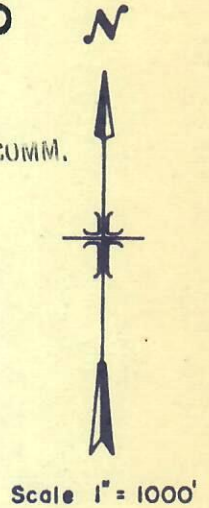
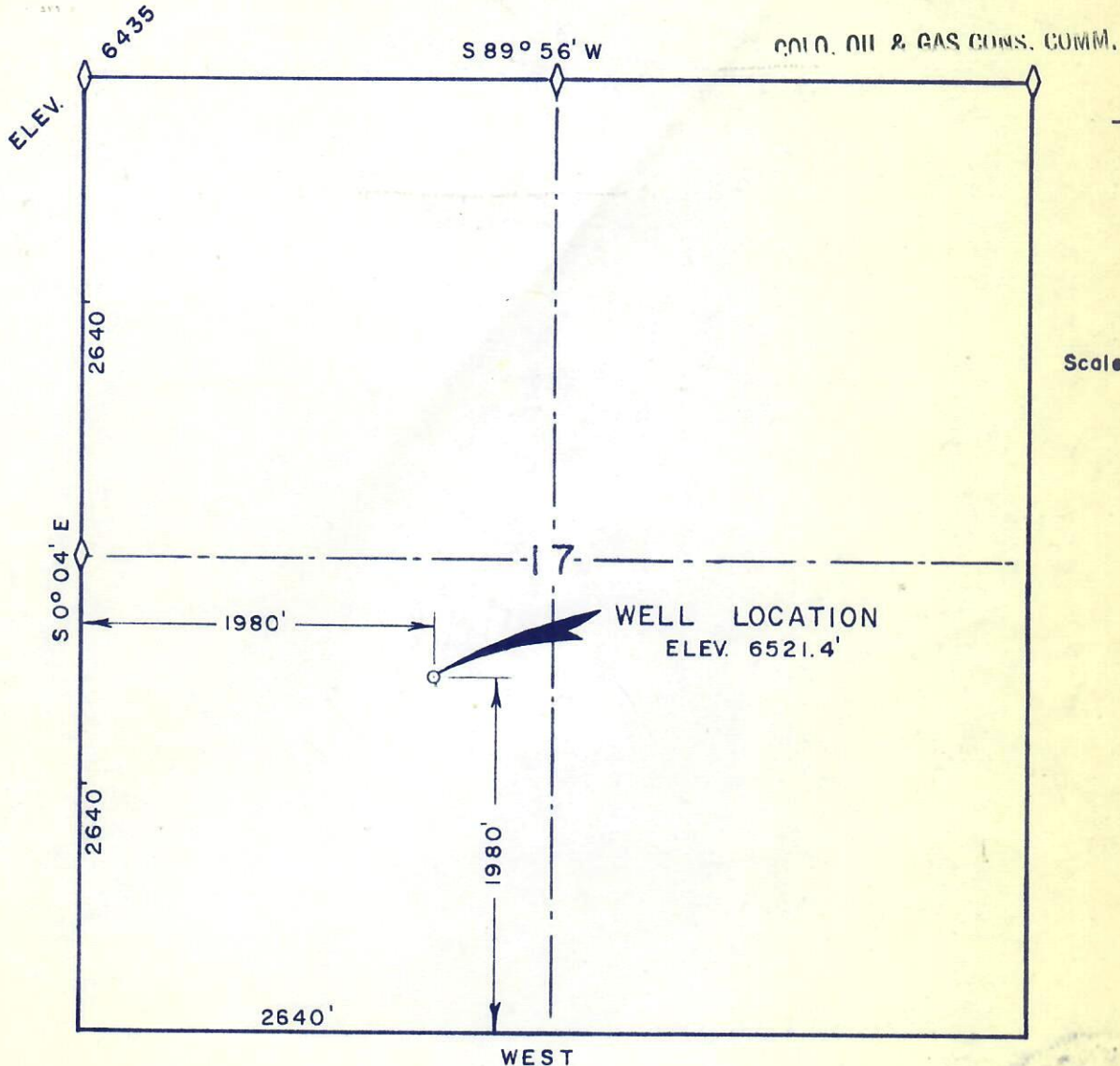


WELL LOCATION
 1980.0 ft. E.W.L. — 1980.0 ft. N.S.L.
 NE ¼ SW ¼ SEC. 17 T1N R93W 6TH. PM.

RECEIVED
JUL 31 1972



Elev. referred to U.S.G.S. datum. NW. Cor. Sec. 17, = 6435
 R.P. 191' West Elev. 6524.4
 R.P. 190' South Elev. 6529.1
 R.P. 195' East Elev. 6518.4
 R.P. 110' North Elev. 6518.9



00038415

I, J. Boyd Peterson do hereby certify that this plat was plotted from notes of a field survey made under my direct responsibility, supervision and checking on July 14, 1972.

-----Registered Land Surveyor-----

WESTERN ENGINEERS, INC.
WELL LOCATION
DYCO PETROLEUM CORP.
ANDERSON NO. 1 WELL
RIO BLANCO COUNTY, COLORADO
 SURVEYED J.B.P. DRAWN G.L.A.
GRAND JUNCTION, COLO. 7/17/72