

Lease & Well No. **MB Larson D 12X25**

Company	SCOUT
Field Name	RANGELY
Location	SWNW, SEC25, T2N, R102W
Short Name	MLAR12X25
County & State	Rio Blanco, CO
API No.	05-103-07270
Updated by	Jared Ede
Date of Diagram	11/5/2024
Kelly Bushing	5,396'
Ground Level	5,383'
Spud Date:	3/10/1970
Completion Date:	4/18/1970

Casing Leak Details
TOC is calculated based on volume pumped and assuming 20% loss

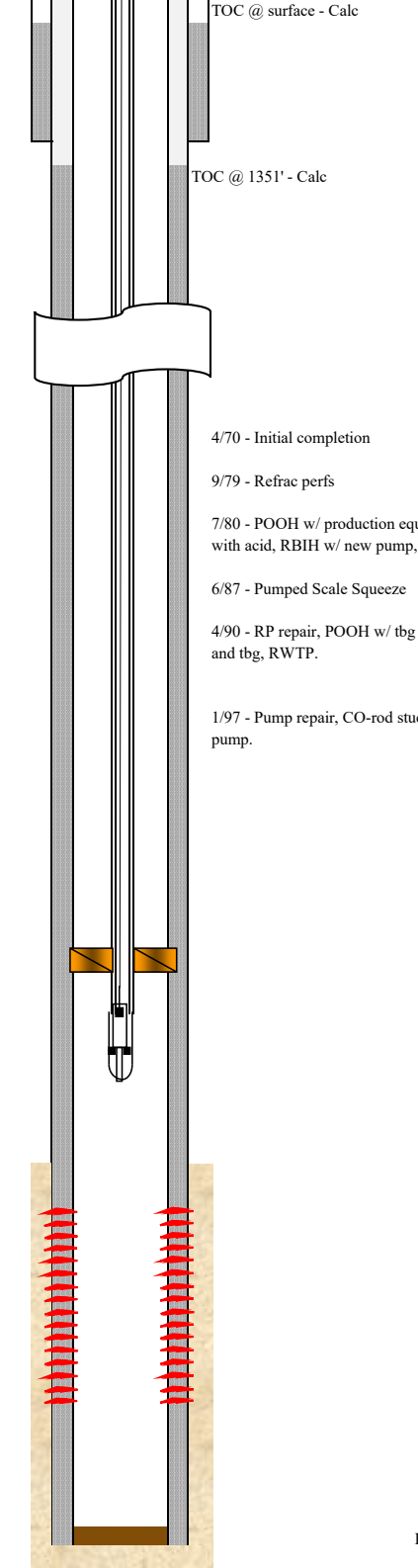
Surface Casing					
Size	10-3/4"	Weight	40.5#	Grade	J-55
Year	1970	Sx. Cmt.	525 sx	Depth	0-750
		Circulate		TOC @	0' - Calculated

Production Casing					
Size	7"	Weight	23.5#	Grade	J-55
Year	1970	Sx. Cmt.	850 sx	Depth	0-6553
		Circulate		TOC @	1351' - Calculated

Tubing Strings						
Tubing - Production set at 6,120.3ftKB on 3/30/2009 06:30						
Tubing Description		Run Date	String Length (ft)		Set Depth (MD) (ftKB)	
Tubing - Production		3/30/2009	6,107.52		6,120.3	
Item Des	Jts	OD (in)	Wt (lb/ft)	Grade	Len (ft)	Btm (ftKB)
Tubing Hanger		7 1/16			0.50	13.3
Tubing 2-7/8" DYB BARE	190	2 7/8	6.50	J-55	5,903.46	5,916.8
Anchor/catcher 20,000 lbs tension		5 1/2			2.35	5,919.1
Tubing 2-7/8" DYB BARE	4	2 7/8	6.50	J-55	123.06	6,042.2
Tubing	1	2 7/8	6.50	J-55	31.84	6,074.0
Seal Nipple		2 7/8			1.10	6,075.1
Tubing Pup Joint		2 7/8	6.50	J-55	4.15	6,079.3
Mud anchor	4 1/2				41.06	6,120.3
LANDED @						6,120.3

31. PERFORATION RECORD (Interval, size and number)		
1 FT. INTERVALS 3 JETS/FT.		
6194	6266	6430
6212	6300	6486
6223	6324	6508
6234	6339	6528
6252	6339	

Current Completion



Formation Tops	
T/Niobrara	2432
B/Niobrara	2605
T/Frontier	3328
T/Frontier 1st Sand	3413
T/Mowry	3602
T/Dakota	3694
T/Morrison	3800
T/Curtis	4395
T/Entrada	4526
T/Carmel	4675
T/Navajo	4710
T/Chinle	5318
T/Shinarump	5460
T/Moenkopi	5535
T/L Moenkopi	5748
T/L Weber	6175

- 4/70 - Initial completion
- 9/79 - Refrac perfs
- 7/80 - POOH w/ production equipment and tbq, add prefs, breakdown with acid, RBIH w/ new pump, rods, and tbq, RWTP.
- 6/87 - Pumped Scale Squeeze
- 4/90 - RP repair, POOH w/ tbq and CO to PBTD, RBIH w/ rods, pmp, and tbq, RWTP.
- 1/97 - Pump repair, CO-rod stuck in well, stripped out and RBI Hw/ new pump.

PBTD: 6,542'
TD: 6,556'

Cement
Weber
Fill