

Schumacher

LSS-HAWKERS

CU

COMPANY: TEACOR INC./AMERICAN PETROLEUM
WELL: R.R. HICK #1
FIELD: R.R. HICK #1
COUNTY: MOORE
STATE: OKLAHOMA
NATION: USA
LOCATION: SEC. 10 T10N R10E S10E
SEG: 10 T10N R10E S10E
PERMANENT DATUM: GROUND LEVEL ELEVATIONS:
ELEV. OF PERM. DATUM: 7282.2' K81 7282.2'
LOG MEASURED FROM: PERM. DATUM
DATE: 2/28/82
DRILLING: MEASURED FROM: K81 7282.2'
DATE: 2/28/82
RUN NO: 1
DATE: 2/28/82

RECEIVED
MAR 2 7 1986
COLDWATER OIL FIELD
TULSA, OKLA.

OTHER SERVICES:
LBT-ENL
TGT-ENL
TEST
CYCLOCK

PROGRAM
TAPE NO:
STAGE
ORDER NO:
449374

DEPTH-DRILLER: 10000.0'
DEPTH-LOGGER: 10015.0'
BTM-LOG INTERVAL: 10010.0'
TOP-LOG INTERVAL: 2840.0'
CASSING-DRILLER: 5042'
CASSING-LOGGER: 5050'
BIT SIZE: 8.75

TYPE FLUID IN HOLE: L.S.N.D.
DENSITY: 8.8 LB/G
VISCOSITY: 46.0 CS
PH: 11.0
FLUID LOSS: 9.6 C3
SOURCE OF SAMPLE: MUD PIT
RM: 1.200 DHMM AT 84.0 DEGF
RMF: 1.070 DHMM AT 52.0 DEGF
RMC: 1.800 DHMM AT 84.0 DEGF
SOURCE RMF/RMC: MEASURED/CALCULATED
RM AT BHT: 0.603 DHMM AT 174. DEGF
RMF AT BHT: 0.348 DHMM AT 174. DEGF
RMC AT BHT: 0.904 DHMM AT 174. DEGF

TIME CIRC. STOPPED: 0130 1-5
TIME LOGGER ON BTM: 1110 1-5
MAX. REC. TEMP: 174.0 DEGF
LOGGING UNIT NO: 8305
LOGGING UNIT LOC: VERNAL
RECORDED BY: M.H. LEA
WITNESSED BY: MACARTNEY/TODD

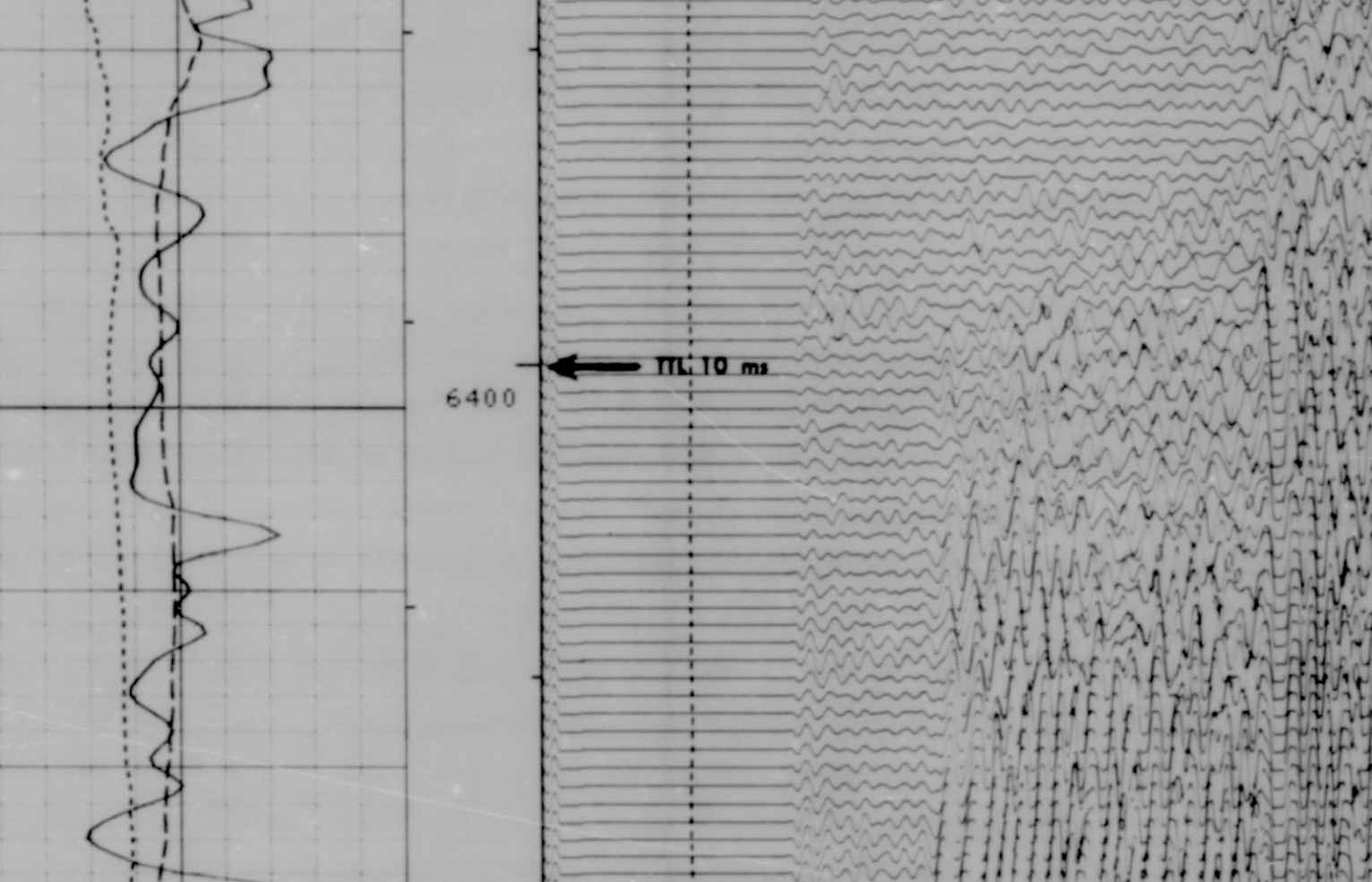
REMARKS:
THANKS FROM THE CREW OF 8305
STRAP TO 10005'
CUSTOMER APPROVED REPEAT
ALL FILES RECORDED ON DG#5 EXCEPT #9, #1

EQUIPMENT NUMBERS-
SLC-FA 1277 SLS-300 SGC-JC 1463 IEM-BD 1088
NLM-BC 346 SLM-DA 611 WDM-AA 505 MCD-B 512

ALL INTERPRETATIONS ARE OPINIONS BASED ON INFERENCE FROM ELECTRICAL OR OTHER MEASUREMENTS AND WE CANNOT AND DO NOT GUARANTEE THE ACCURACY OR CORRECTNESS OF ANY INTERPRETATIONS, AND WE SHALL NOT, EXCEPT IN THE CASE OF GROSS OR WILLFUL NEGLIGENCE ON OUR PART, BE LIABLE OR RESPONSIBLE FOR ANY LOSS, COSTS, DAMAGES OR EXPENSES INCURRED OR SUSTAINED BY ANYONE RESULTING FROM ANY INTERPRETATION MADE BY ANY OF OUR OFFICERS, AGENTS OR EMPLOYEES. THESE INTERPRETATIONS ARE ALSO SUBJECT TO OUR GENERAL TERMS AND CONDITIONS AS SET OUT IN OUR CURRENT PRICE SCHEDULE.

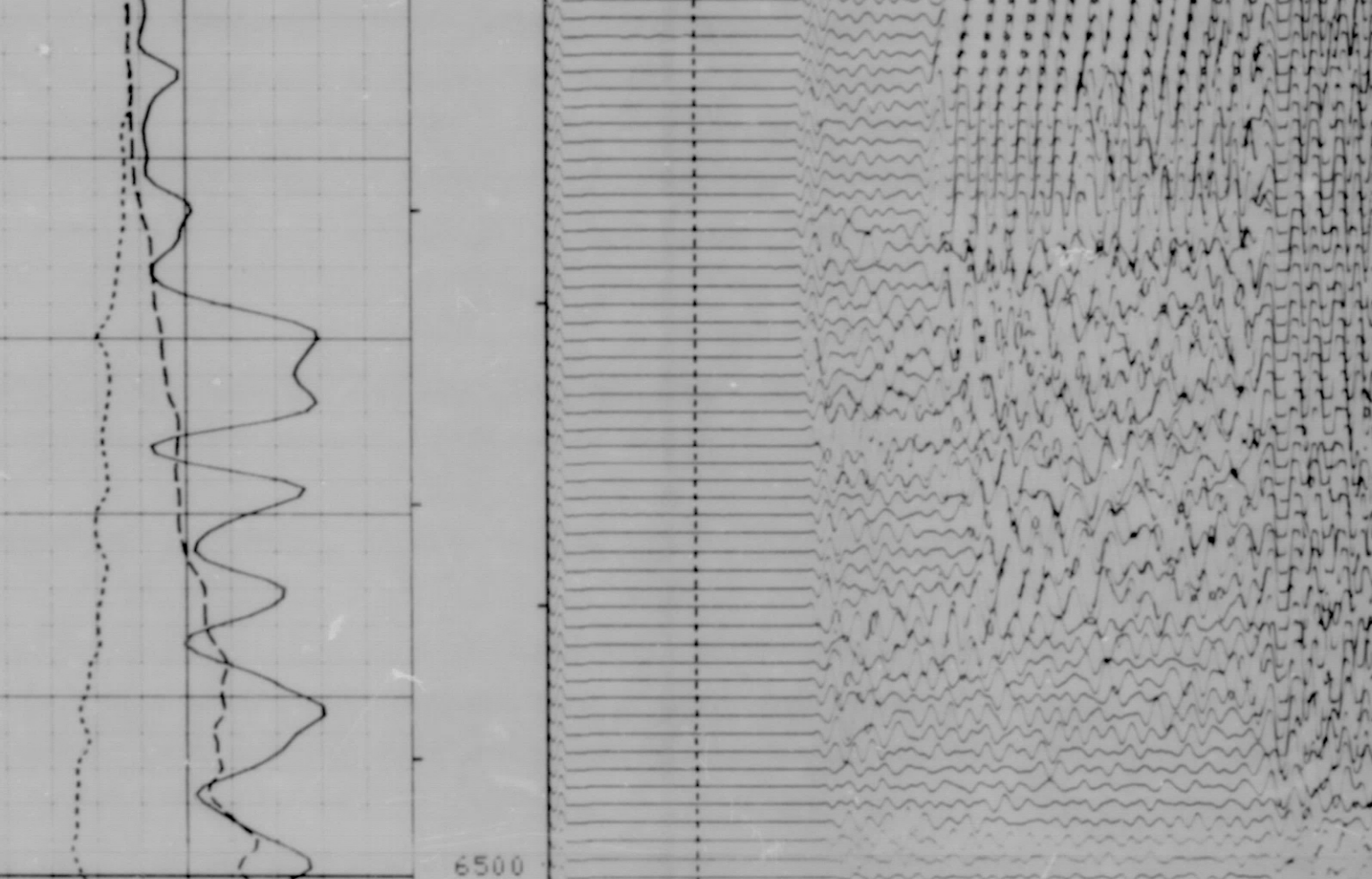
FILE

17



FILE

17

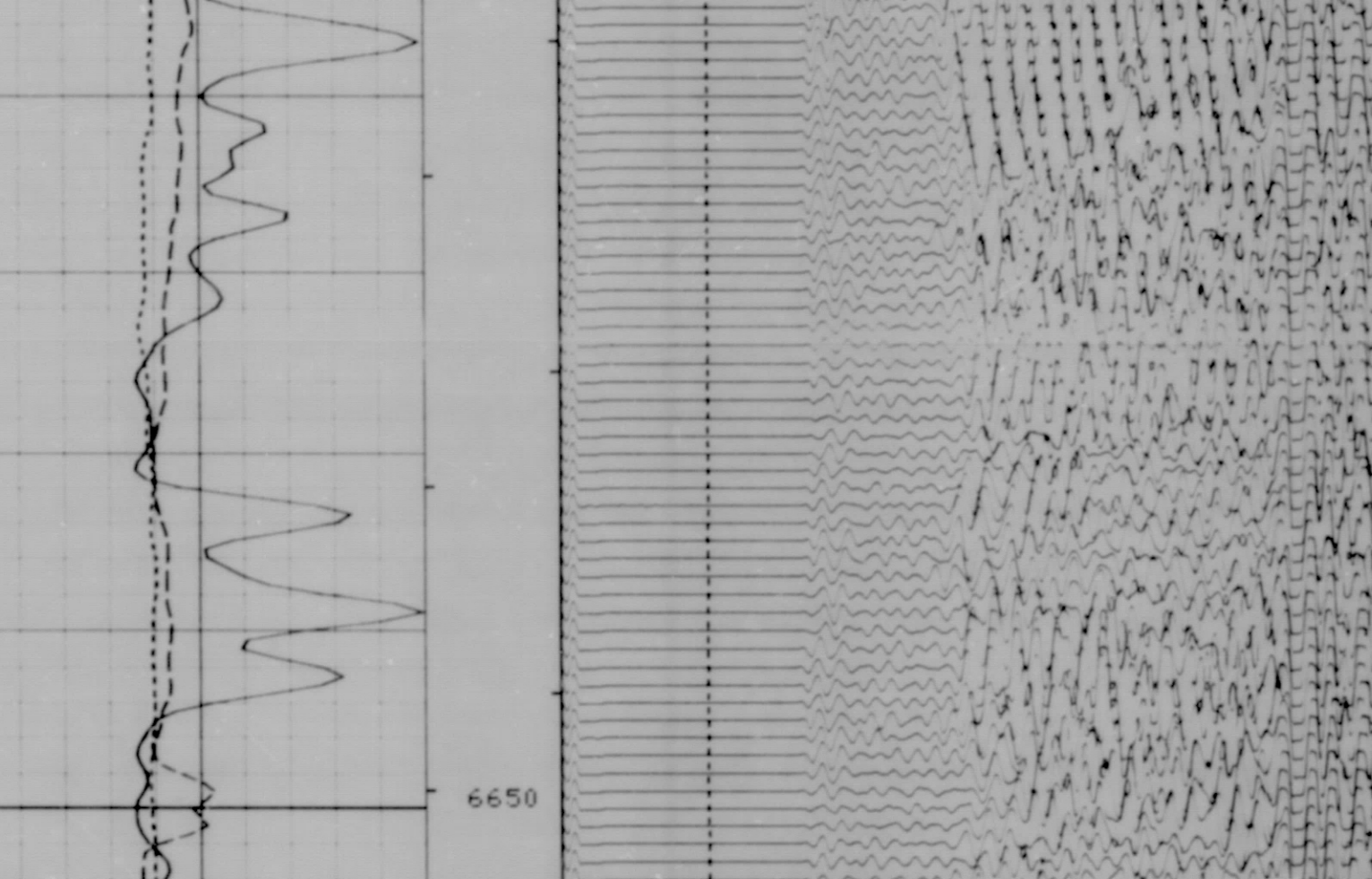


SENSOR MEASURE POINT TO TENSION REFERENCE POINT

CBL	11.3	FEET	AMPL	11.3	FEET
TT3	11.3	FEET	TT4	10.3	FEET
TT1	12.3	FEET	TT2	11.3	FEET
GR	40.3	FEET	SRAT	16.8	FEET
TENS	.0	FEET	CALI	32.3	FEET
NOIS	.0	FEET			

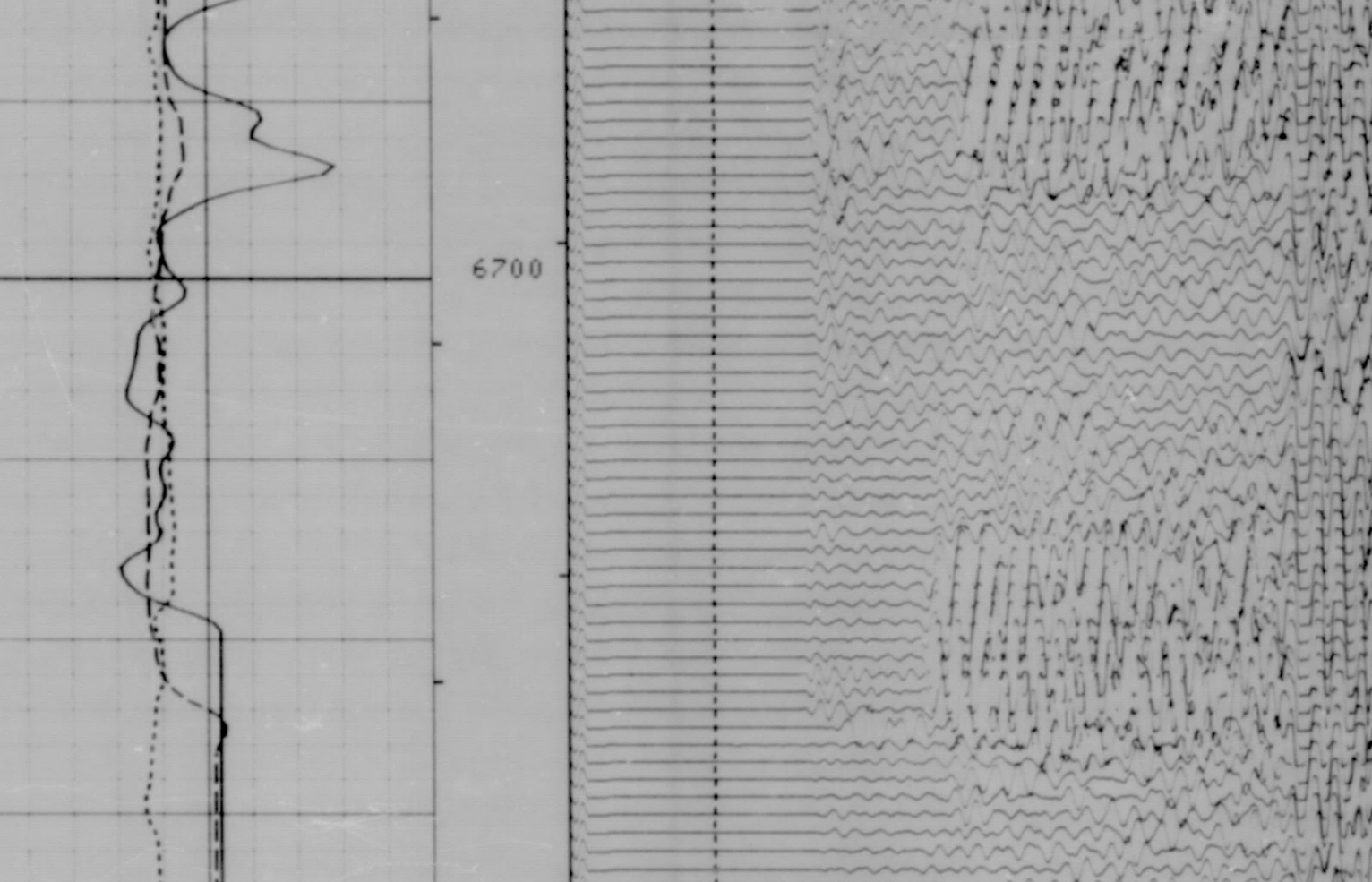
PARAMETERS

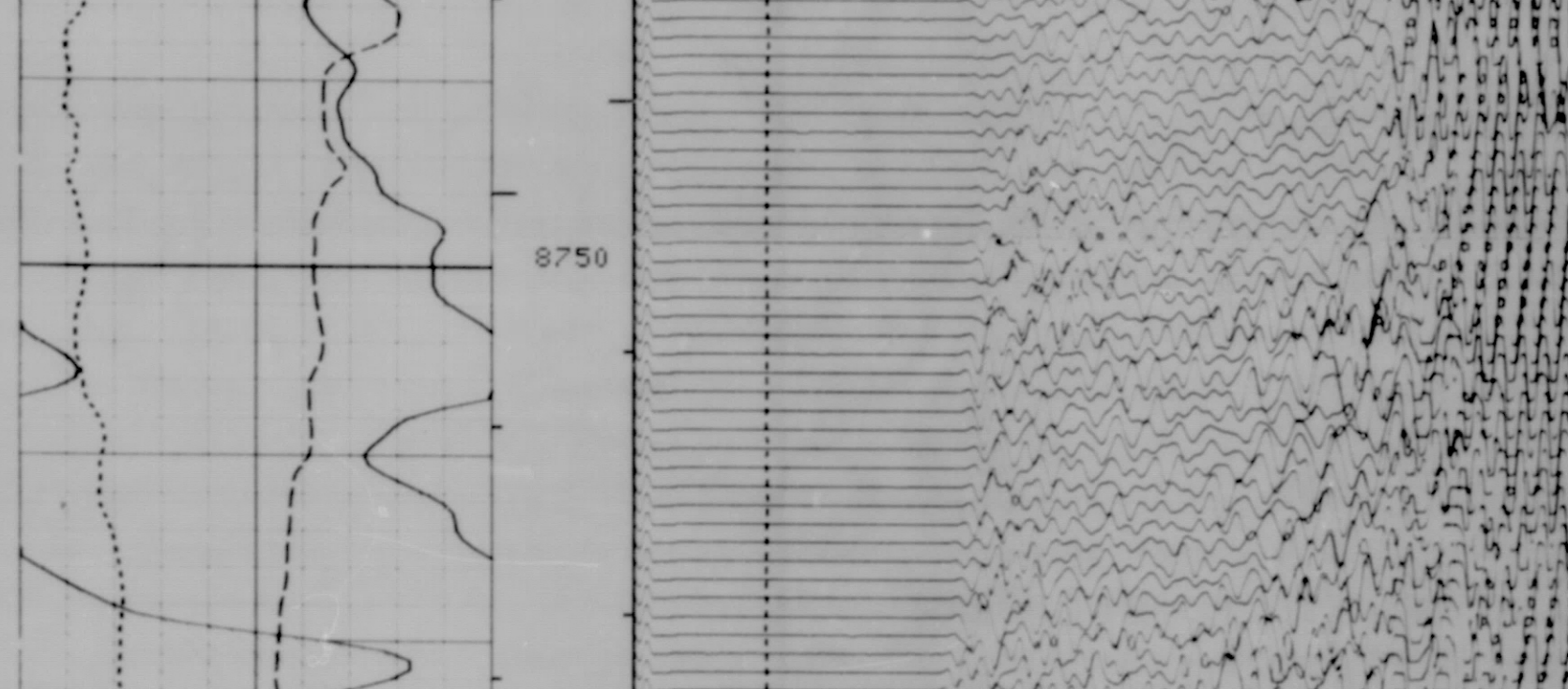
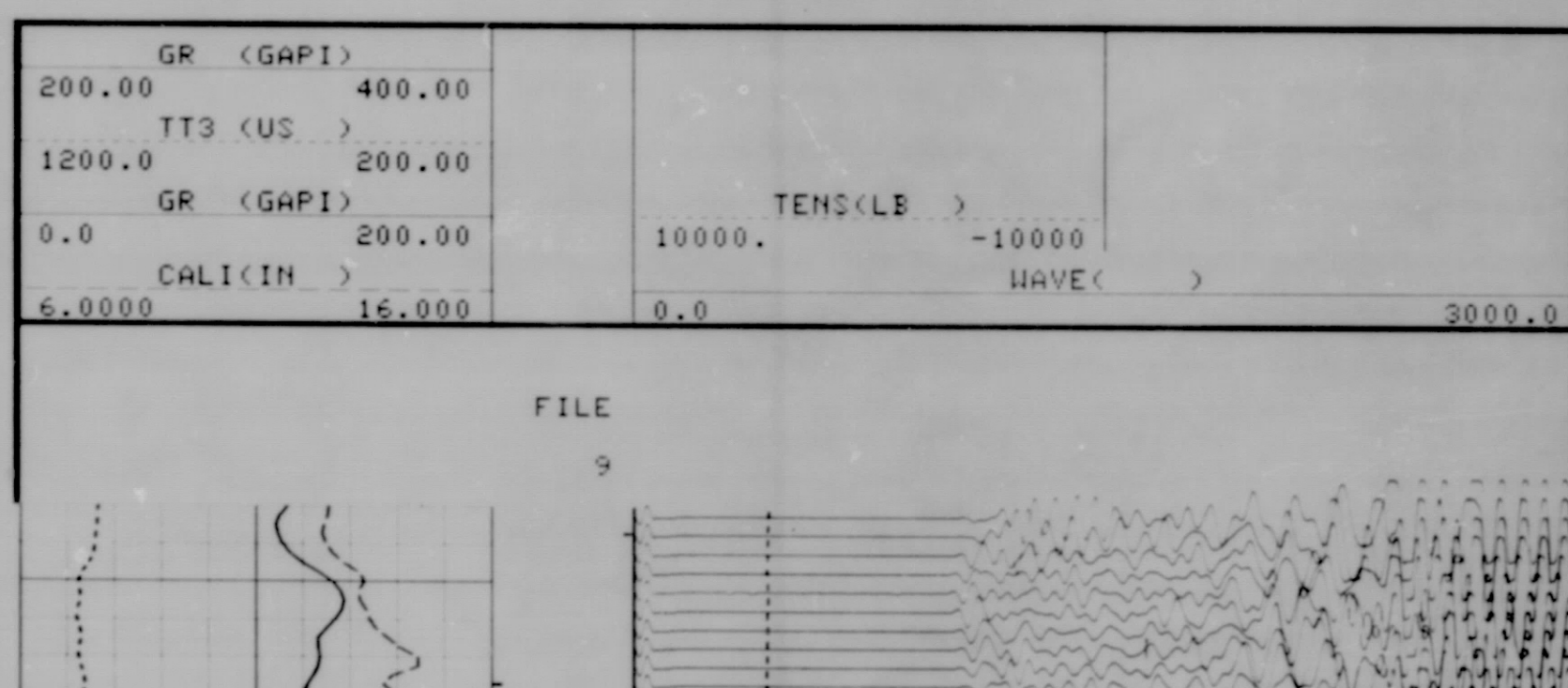
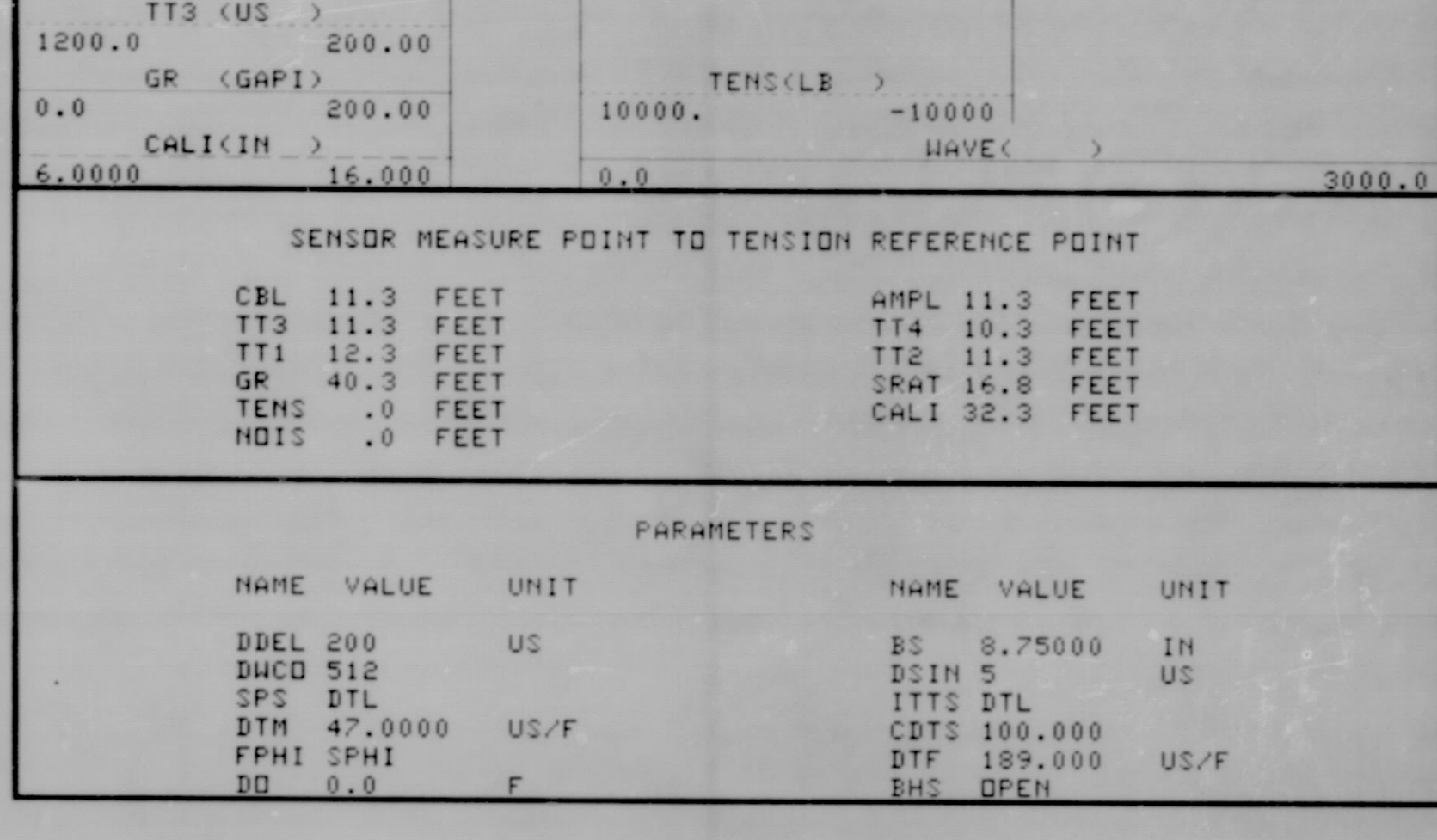
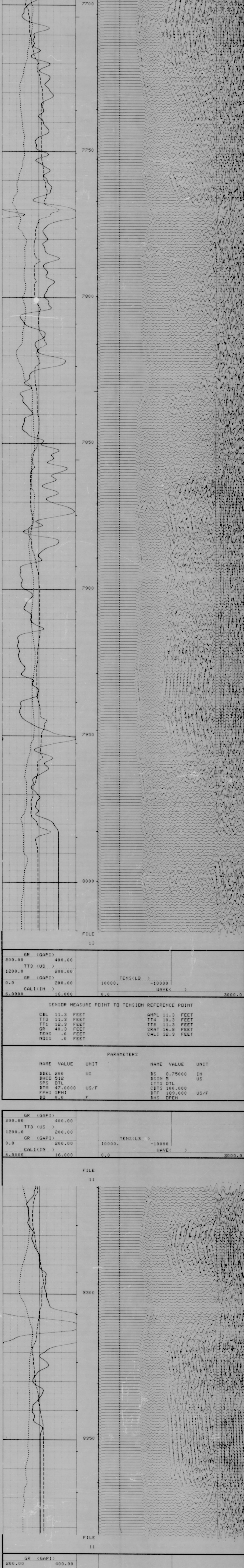
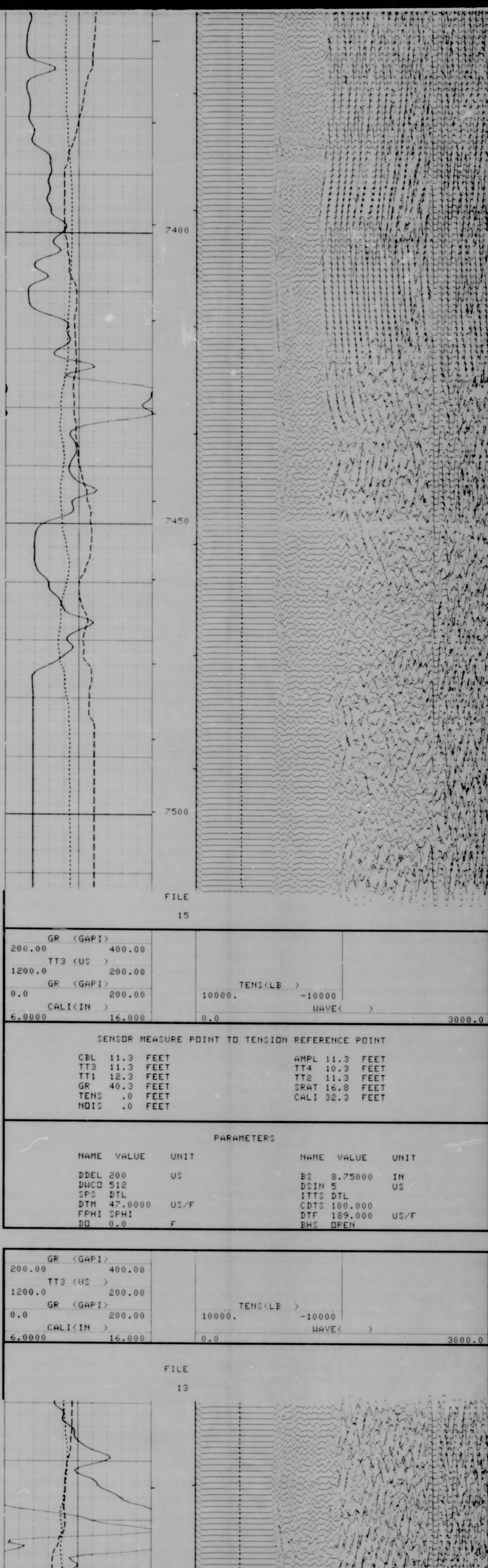
NAME	VALUE	UNIT	NAME	VALUE	UNIT
DDEL	200	US	BS	8.75000	IN
DUCD	512		DSIN	5	US
SPS	DTL		ITC	DTL	
DTM	47.0000	US/F	CDTS	100.000	
FPHI	SPHI		DTF	189.000	US/F
BD	0.0	F	BHS	OPEN	

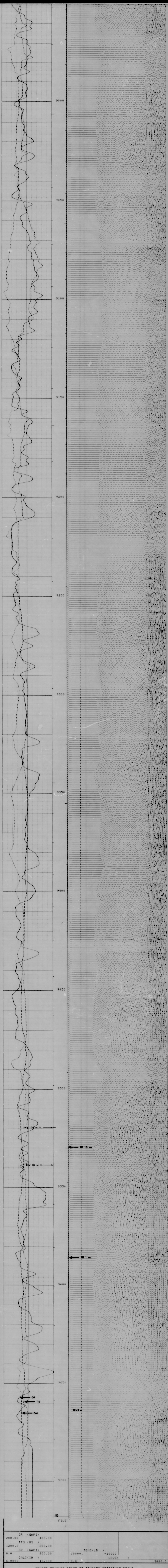


FILE

15







GR (GAPI)	200.00	400.00			
TT3 (US)	1200.0	200.00			
GR (GAPI)	0.0	200.00			
CALI (IN)	6.0000	15.000			
			TENS (LB)	10000.	-10000
			WAVE ()	0.0	3000.0
SENSOR MEASURE POINT TO TENSION REFERENCE POINT					
CBL	11.3	FEET	AMPL	11.3	FEET
TT3	11.3	FEET	TT4	10.3	FEET
TT1	12.3	FEET	TT2	11.3	FEET
GR	40.3	FEET	SRAT	16.8	FEET
TENS	.0	FEET	CALI	32.3	FEET
HOIS	.0	FEET			
PARAMETERS					
NAME	VALUE	UNIT	NAME	VALUE	UNIT
DBEL	200	US	BS	8.75000	IN
DISP	512		DSIN	5	US
SFS	DTL		ITTC	DTL	
DTM	47.0000	US/F	CDTC	100.000	
FPHI	SPH1		DTF	189.000	US/F
DD	0.0	F	BHS	OPEN	
COMPANY TEXACO INC./ AMERICAN PETROFINA			SCHL FR 10010		
WELL R.R. WICK #1			SCHL TD 10016		
FIELD W. DCAT			DRIR TD 10000		
COUNTY MOFFAT			Elev: KB 7282.2		
STATE COLORADO			DF 7281.7		
			GL 7262.2		