

Flowline Closure Checklist

COGCC Rule 911.a.(4) Environmental Site Closure Assessment Field Form

Additional Attachments:		Tank Battery Closure	—	Wellhead Closure	—	Pit Closure	—	Partially Buried Vault Closure	—
Site Name & COGCC Facility Number: Boulter #14-14G		Date: 09/27/23				Remediation Project #: 29232			
Associated Wells: 05-123-15089		Age of Site: Years				Number of Photos Attached: 5			

Starting point: (GPS coordinates and descriptions) **40.306878 / -104.632091 at well**

End point: (GPS coordinates and descriptions) **40.307905 / -104.632173 at separator**

USCS Soil Type: **Clayey SAND (SC)** Estimated Depth to Groundwater: **Approx. 4-5'**

Hydrocarbon Impacted Soils / Spills: (Note estimated size and if impact appears to be surficial or extends to an unknown depth)
Hydrocarbon staining and strong odor observed in two flowline cut-point excavations.

Salt Crusted Soils or Impacted Vegetation: (Note estimated size and if impact appears to be surficial or extends to an unknown depth)
None observed.

Flowlines

Flowline type	O, G, W								
Depth	Approx. 3-5'								
Age	Years								
Length	Approx. 374'								
Construction Material	Steel								
Were flowlines pulled?	Yes - Flowline Removed								
Visual Integrity of lines	Good								
Visual impacts if trenched	HC odor and staining observed								
PID Readings if trenched	71.4	101.6	102.7	4228.3	1.6				
Sample taken? Location/Sample ID#	FL-SS-01	FL-SS-02	FL-SS-03	FL-SS-04	FL-SS-05				
Photo Number(s)	See photolog								

Other observations regarding on location flowlines:
Flowline removed. Pt. B (at separator) and pt. A (at wellhead) assessed.

Summary

Was impacted soil identified?	No	Yes - less than 10 cubic yards	Yes - more than 10 cubic yards	
Total number of samples field screened:	5		Total number of samples collected:	5
Highest PID Reading:	4228.3		Total number of samples submitted to lab for analysis:	5
If more than 10 cubic yards of impacted soil were observed:				
Vertical extent:	N/A		Estimated spill volume:	
Lateral extent:	N/A		Volume of soil removed:	
Is additional investigation required?				
Was groundwater encountered during the investigation?	No	Yes - not impacted or in contact with impacted soils	Yes - groundwater impacted and/or in contact with impacted soils	
Measured depth to groundwater:	Approx. 4-5'		Was remedial groundwater removal conducted?	Yes No
Date Groundwater was encountered:	09/27/23		Commencement date of removal:	
Sheen on groundwater?	Yes	No	Volume of groundwater removed prior to sampling:	N/A
Free product observed?	Yes	No	Volume of groundwater removed post sampling:	N/A
Total number of samples collected:	1		Total Volume of groundwater removed:	
Total number of samples submitted to lab for analysis:	1			



FIGURES

Figure 1: Topographic Site Location Map

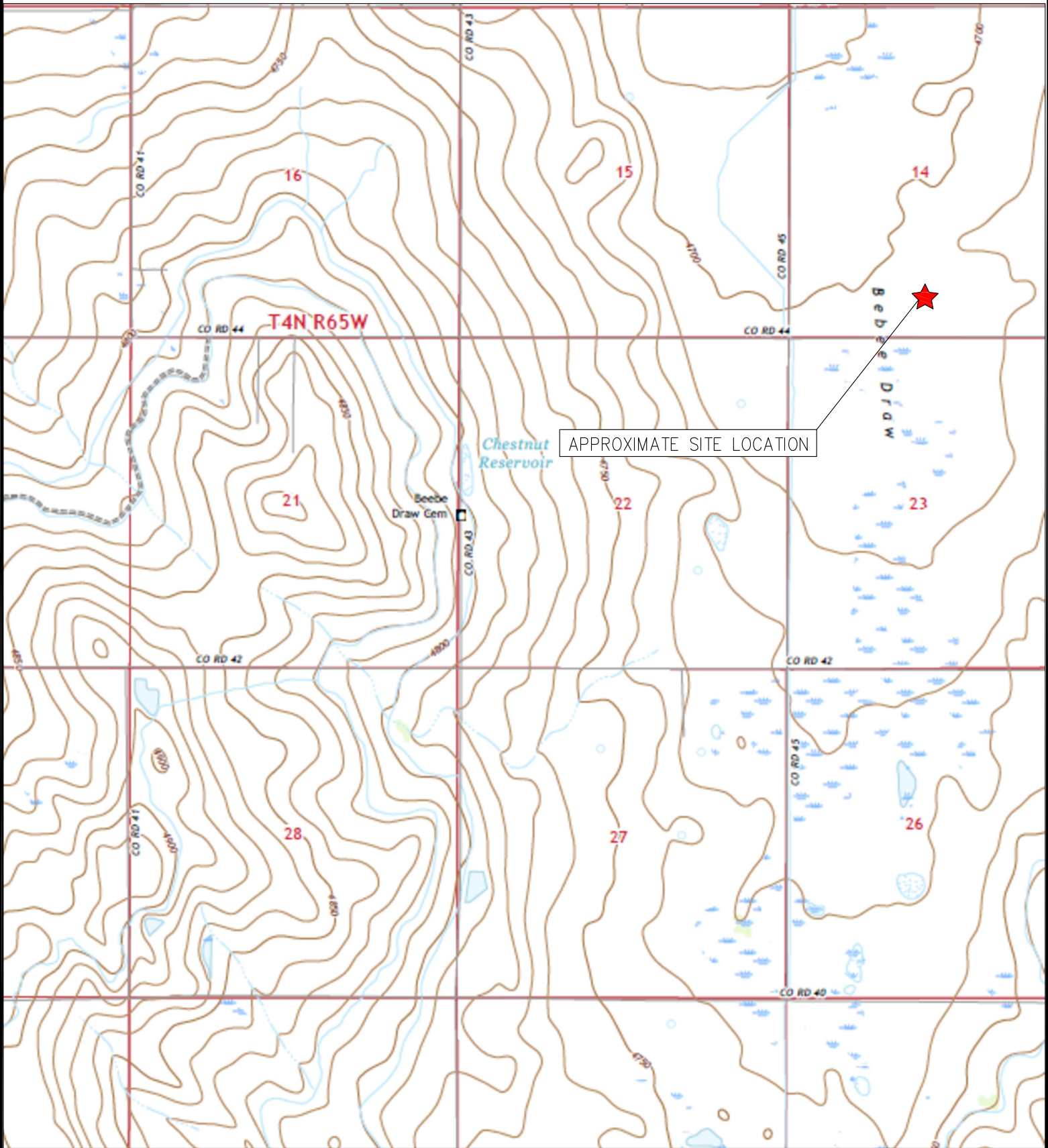
Figure 2: Aerial Site Location Map

Figure 3: Soil Analytical Map

Figure 4: Polycyclic Aromatic Hydrocarbons Map

Figure 5: Grab Groundwater Analytical Map

Figure 6: Metals in Soil Map



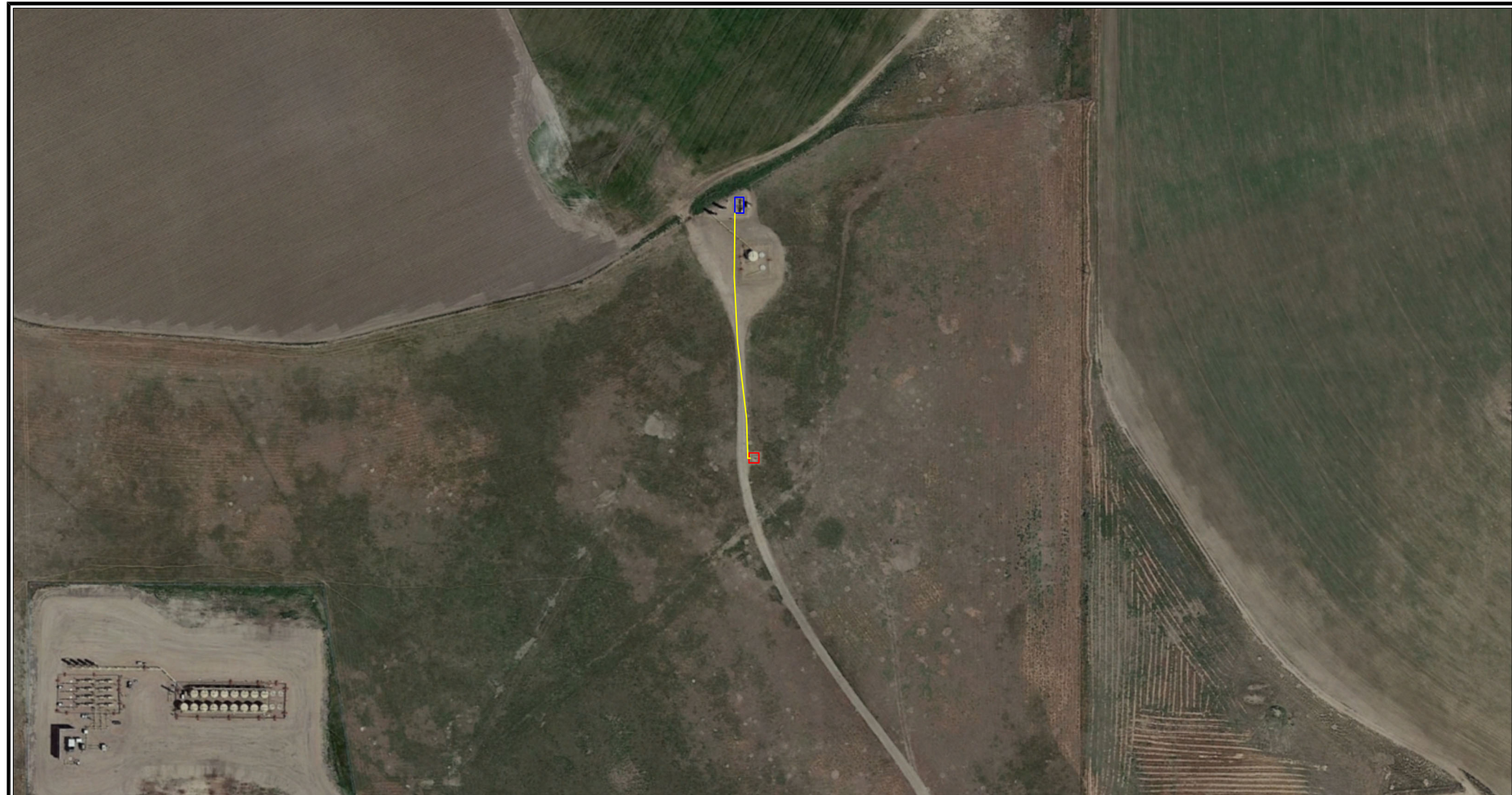
TOPOGRAPHIC SITE LOCATION MAP
 BOULTER #14-14G
 CLOSURE ASSESSMENT
 40.306870 / -104.632080
 SE 1/4 SW 1/4 SEC.14 T4N R65W 6PM
 WELD COUNTY, COLORADO
 API # 05-123-15089
 REMEDIATION # 29232



EAGLE
 ENVIRONMENTAL
 CONSULTING, LLC

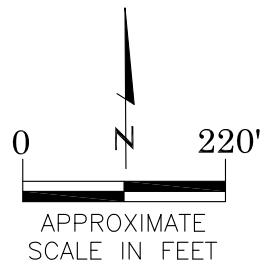
8000 W 44th Ave, Wheat Ridge, CO 80033
 Ph: 303-433-0479 • F: 303-325-5449





LEGEND

- BOULTER #14-14G WELLHEAD
- ASSOCIATED SEPARATOR
- APPROXIMATE FLOWLINE LOCATION (REMOVED)



AERIAL SITE LOCATION MAP
BOULTER #14-14G
CLOSURE ASSESSMENT
40.306870 / -104.632080
SE¹/₄ SW¹/₄ SEC.14 T4N R65W 6PM
WELD COUNTY, COLORADO
API # 05-123-15089
REMEDATION # 29232



FIGURE NO.
2

DRAWN BY:
GK



EAGLE
ENVIRONMENTAL
CONSULTING, LLC
8000 W 44th Ave, Wheat Ridge, CO 80033
Ph: 303-433-0479 • F: 303-325-5449

LEGEND

-  APPROXIMATE FLOWLINE LOCATION (REMOVED)
-  APPROXIMATE LOCATION OF SOIL SAMPLES SUBMITTED FOR LABORATORY ANALYSIS

PARAMETERS

SAMPLE LOCATION	
DATE	
DEPTH (FEET)	
B	= BENZENE (mg/kg)
T	= TOLUENE (mg/kg)
E	= ETHYLBENZENE (mg/kg)
X	= TOTAL XYLENES (mg/kg)
N	= NAPHTHALENE (mg/kg)
G	= TPH-GRO (mg/kg)
D	= TPH-DRO (mg/kg)
R	= TPH-RRO (mg/kg)
1,2,4-TMB	= 1,2,4 TRIMETHYLBENZENE (mg/kg)
1,3,5-TMB	= 1,3,5 TRIMETHYLBENZENE (mg/kg)
Brn	= BORON (mg/L)
EC	= SPECIFIC CONDUCTANCE (mmhos/cm)
SAR	= SODIUM ADSORPTION RATIO
pH	= pH (pH UNITS)

mg/kg = MILLIGRAMS PER KILOGRAM
 mg/L = MILLIGRAMS PER LITER
 mmhos/cm = MILLIMHOS PER CENTIMETER

TPH-GRO = TOTAL PETROLEUM HYDROCARBONS - GASOLINE RANGE ORGANICS
 TPH-DRO = TOTAL PETROLEUM HYDROCARBONS - DIESEL RANGE ORGANICS
 TPH-RRO = TOTAL PETROLEUM HYDROCARBONS - RESIDUAL RANGE ORGANICS

NOTES:
 VALUES PRESENTED WITH A LESS THAN SYMBOL (<) DID NOT CONTAIN CONCENTRATIONS AT OR ABOVE LABORATORY DETECTION LIMITS.

VALUES PRESENTED IN **BOLD** EXCEED ECMC TABLE 915-1 REGULATORY LIMITS.

VALUES PRESENTED WITH ASTERISK (*) EXCEED ECMC TABLE 915-1 PROTECTION OF GROUNDWATER SOIL SCREENING LEVELS, ONLY.

ECMC = ENERGY & CARBON MANAGEMENT COMMISSION

SOIL ANALYTICAL MAP
 BOULTER #14-14C
 CLOSURE ASSESSMENT
 40.306870 / -104.632080
 SE¼ SW¼ SEC.14 T4N R65W 6PM
 WELD COUNTY, COLORADO
 API # 05-123-15089
 REMEDIATION # 29232

FIGURE NO.
3

DRAWN BY:
GK



EAGLE
 ENVIRONMENTAL
 CONSULTING, LLC
 8000 W 44th Ave, Wheat Ridge, CO 80033
 Ph: 303-433-0479 • F: 303-325-5449

FL-SS-05@3'
 09/27/23
 3'
 B = <0.00200
 T = <0.00200
 E = <0.00200
 X = <0.00200
 N = <0.00380
 G = 1.60
 D = <25.0
 R = <100
 1,2,4-TMB = <0.00200
 1,3,5-TMB = <0.00200
 Brn= 0.312
 EC = 0.374
 SAR= 1.09
 pH = 8.13

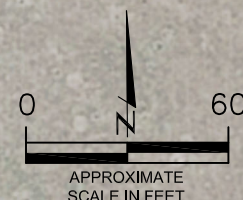
FL-SS-04@5'
 09/27/23
 5'
 B = **0.814***
 T = 0.00240
 E = **2.12***
 X = 0.411
 N = **0.196***
 G = **482**
 D = **943**
 R = **179**
 1,2,4-TMB = **31.1**
 1,3,5-TMB = **0.0114***
 Brn= 1.32
 EC = 0.733
 SAR= 3.22
 pH = 7.99

FL-SS-03@4'
 09/27/23
 4'
 B = <0.00200
 T = <0.00200
 E = <0.00200
 X = <0.00200
 N = <0.00380
 G = <0.200
 D = <25.0
 R = <100
 1,2,4-TMB = <0.00200
 1,3,5-TMB = <0.00200
 Brn= 1.23
 EC = 1.45
 SAR= **6.44**
 pH = 8.26

FL-SS-02@3'
 09/27/23
 3'
 B = <0.00200
 T = <0.00200
 E = <0.00200
 X = <0.00200
 N = <0.00380
 G = <0.200
 D = <25.0
 R = 179
 1,2,4-TMB = <0.00200
 1,3,5-TMB = <0.00200
 Brn= 0.729
 EC = 1.42
 SAR= 4.51
 pH = 8.19

BACKGROUND-01@3'
 09/27/23
 3'
 SAR= **13.2**
 pH = **8.52**

FL-SS-01@3'
 09/27/23
 3'
 B = <0.00200
 T = <0.00200
 E = <0.00200
 X = <0.00200
 N = <0.00380
 G = <0.200
 D = <25.0
 R = <100
 1,2,4-TMB = <0.00200
 1,3,5-TMB = <0.00200
 Brn= 0.159
 EC = 0.317
 SAR= 0.325
 pH = **8.50**



FL-SS-05@3'
09/27/23
3'

1-Methylnaphthalene = <0.00201
2-Methylnaphthalene = <0.00201
Acenaphthene = <0.00067
Anthracene = <0.00067
Benzo(a)anthracene = <0.00067
Benzo(a)pyrene = <0.00067
Benzo(b)fluoranthene = <0.00067
Benzo(k)fluoranthene = <0.00067
Chrysene = <0.00067
Dibenzo(a,h)anthracene = <0.00067
Fluoranthene = <0.00067
Fluorene = <0.00067
Indeno(1,2,3-CD)pyrene = <0.00067
Pyrene = <0.00067

FL-SS-04@5'
09/27/23
5'

1-Methylnaphthalene = **0.538***
2-Methylnaphthalene = **1.22***
Acenaphthene = 0.0437
Anthracene = 0.109
Benzo(a)anthracene = 0.00299
Benzo(a)pyrene = <0.00067
Benzo(b)fluoranthene = <0.00067
Benzo(k)fluoranthene = <0.00067
Chrysene = 0.0144
Dibenzo(a,h)anthracene = <0.00067
Fluoranthene = 0.000776
Fluorene = 0.0443
Indeno(1,2,3-CD)pyrene = <0.00067
Pyrene = 0.00736

FL-SS-03@4'
09/27/23
4'

1-Methylnaphthalene = <0.00201
2-Methylnaphthalene = <0.00201
Acenaphthene = <0.00067
Anthracene = <0.00067
Benzo(a)anthracene = <0.00067
Benzo(a)pyrene = <0.00067
Benzo(b)fluoranthene = <0.00067
Benzo(k)fluoranthene = <0.00067
Chrysene = <0.00067
Dibenzo(a,h)anthracene = <0.00067
Fluoranthene = <0.00067
Fluorene = <0.00067
Indeno(1,2,3-CD)pyrene = <0.00067
Pyrene = <0.00067

FL-SS-02@3'
09/27/23
3'

1-Methylnaphthalene = <0.00201
2-Methylnaphthalene = <0.00201
Acenaphthene = <0.00067
Anthracene = <0.00067
Benzo(a)anthracene = 0.00433
Benzo(a)pyrene = 0.00792
Benzo(b)fluoranthene = 0.00626
Benzo(k)fluoranthene = 0.00265
Chrysene = 0.00539
Dibenzo(a,h)anthracene = 0.000948
Fluoranthene = 0.00498
Fluorene = <0.00067
Indeno(1,2,3-CD)pyrene = 0.00572
Pyrene = 0.00418

FL-SS-01@3'
09/27/23
3'

1-Methylnaphthalene = <0.00201
2-Methylnaphthalene = <0.00201
Acenaphthene = <0.00067
Anthracene = <0.00067
Benzo(a)anthracene = <0.00067
Benzo(a)pyrene = <0.00067
Benzo(b)fluoranthene = <0.00067
Benzo(k)fluoranthene = <0.00067
Chrysene = <0.00067
Dibenzo(a,h)anthracene = 0.000655
Fluoranthene = <0.00067
Fluorene = <0.00067
Indeno(1,2,3-CD)pyrene = 0.000652
Pyrene = <0.00067

FL-SS-05


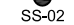
FL-SS-04

FL-SS-03

FL-SS-02

FL-SS-01

LEGEND

-  APPROXIMATE FLOWLINE LOCATION (REMOVED)
-  APPROXIMATE LOCATION OF SOIL SAMPLES SUBMITTED FOR LABORATORY ANALYSIS

PARAMETERS

SAMPLE LOCATION
DATE SAMPLE COLLECTED
APPROXIMATE DEPTH

POLYCYCLIC AROMATIC HYDROCARBONS (PAHs) (mg/kg)

mg/kg = MILLIGRAMS PER KILOGRAM

NOTES:
VALUES PRESENTED WITH A LESS THAN SYMBOL (<) DID NOT CONTAIN CONCENTRATIONS AT OR ABOVE LABORATORY DETECTION LIMITS.

VALUES PRESENTED IN **BOLD** EXCEED ECMC TABLE 915-1 REGULATORY LIMITS.

VALUES PRESENTED WITH AN ASTERISK (*) EXCEED ECMC TABLE 915-1 GROUNDWATER SOIL SCREENING LEVELS, ONLY.

ECMC = ENERGY & CARBON MANAGEMENT COMMISSION

POLYCYCLIC AROMATIC HYDROCARBONS MAP
BOULDER #14-14G
CLOSURE ASSESSMENT
40.306870 / -104.632080
SE¼ SW¼ SEC.14 T4N R65W 6PM
WELD COUNTY, COLORADO
API # 05-123-15089
REMEDATION # 29232

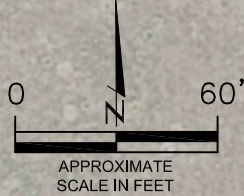


FIGURE NO.

4



DRAWN BY:

GK



EAGLE
ENVIRONMENTAL
CONSULTING, LLC
8000 W 44th Ave, Wheat Ridge, CO 80033
Ph: 303-433-0479 • F: 303-325-5449

LEGEND

-  APPROXIMATE FLOWLINE LOCATION (REMOVED)
-  APPROXIMATE LOCATION OF GRAB GROUNDWATER SAMPLE SUBMITTED FOR LABORATORY ANALYSIS

PARAMETERS

GROUNDWATER SAMPLE LOCATION
 DATE
 B = BENZENE (µg/L)
 T = TOLUENE (µg/L)
 E = ETHYLBENZENE (µg/L)
 X = TOTAL XYLENES (µg/L)
 N = NAPHTHALENE (µg/L)
 1,2,4-TMB = 1,2,4-TRIMETHYLBENZENE (µg/L)
 1,3,5-TMB = 1,3,5-TRIMETHYLBENZENE (µg/L)

µg/L = MICROGRAMS PER LITER

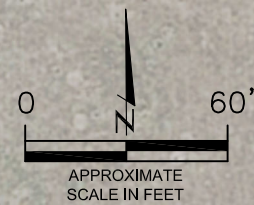
NOTES:
 VALUES PRESENTED WITH A LESS THAN SYMBOL (<) DID NOT CONTAIN CONCENTRATIONS AT OR ABOVE THE LABORATORY REPORTING LIMIT.

VALUES PRESENTED IN **BOLD** EXCEED THE ECMC TABLE 915-1 REGULATORY LIMITS FOR THAT COMPOUND.

ECMC = ENERGY & CARBON MANAGEMENT COMMISSION

GW-01

GW-01
 09/27/23
 B = <1.00
 T = <1.00
 E = <1.00
 X = <1.00
 N = <2.00
 1,2,4-TMB = <2.00
 1,3,5-TMB = <2.00





GRAB GROUNDWATER ANALYTICAL MAP
 BOULTER #14-14C
 CLOSURE ASSESSMENT
 40.306870 / -104.632080
 SE¼ SW¼ SEC.14 T4N R65W 6PM
 WELD COUNTY, COLORADO
 API # 05-123-15089
 REMEDIATION # 29232

FIGURE NO.
 5
 DRAWN BY:
 GK



EAGLE
 ENVIRONMENTAL
 CONSULTING, LLC
 8000 W 44th Ave, Wheat Ridge, CO 80033
 Ph: 303-433-0479 • F: 303-325-5449

LEGEND

-  APPROXIMATE FLOWLINE LOCATION (REMOVED)
-  APPROXIMATE LOCATION OF SOIL SAMPLES SUBMITTED FOR LABORATORY ANALYSIS

PARAMETERS

SAMPLE LOCATION
DATE SAMPLE COLLECTED
APPROXIMATE DEPTH
Arsenic = (mg/kg)
Barium = (mg/kg)
Cadmium = (mg/kg)
Chromium (VI) = (mg/kg)
Copper = (mg/kg)
Lead = (mg/kg)
Nickel = (mg/kg)
Selenium = (mg/kg)
Silver = (mg/kg)
Zinc = (mg/kg)

mg/kg = MILLIGRAMS PER KILOGRAM

(NS) – NOT SAMPLED

NOTES:

VALUES PRESENTED WITH A LESS THAN SYMBOL (<) DID NOT CONTAIN CONCENTRATIONS AT/OR ABOVE LABORATORY REPORTING LIMITS AND/OR MINIMUM DETECTION LIMITS.

VALUES PRESENTED IN **BOLD** EXCEED ECMC TABLE 915-1 REGULATORY LIMITS.

*VALUES EXCEED ECMC TABLE 915-1 PROTECTION OF GROUNDWATER SOIL SCREENING LEVELS, ONLY.

**ACHIEVABLE PRACTICAL QUANTITATIVE LIMITS FOR HEXAVALENT CHROMIUM (Cr VI) IN SOILS IS IN THE RANGE OF 0.1 TO 1 mg/kg.

***ARSENIC IS NATURALLY OCCURRING IN COLORADO. LOCAL CLEAN-UP LEVEL (5.23 mg/kg) is 1.25*BACKGROUND (4.19 mg/kg).

ECMC = ENERGY & CARBON MANAGEMENT COMMISSION

METALS IN SOIL MAP
 BOULTER #14-14C
 CLOSURE ASSESSMENT
 40.306870 / -104.632080
 SE¼ SW¼ SEC.14 T4N R65W 6PM
 WELD COUNTY, COLORADO
 API # 05-123-15089
 REMEDIATION # 29232

FIGURE NO.
6

DRAWN BY:
GK



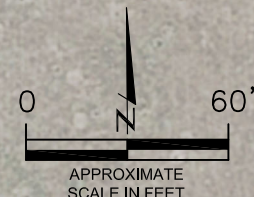
EAGLE
 ENVIRONMENTAL
 CONSULTING, LLC
 8000 W 44th Ave, Wheat Ridge, CO 80033
 Ph: 303-433-0479 • F: 303-325-5449

FL-SS-04@5'
 09/27/23
 5'

Arsenic = 1.66***
 Barium = 58.7
 Cadmium = 0.110
 Chromium (VI) = <0.252**
 Copper = <8.91
 Lead = <8.91
 Nickel = <8.91
 Selenium = **0.440***
 Silver = <0.0891
 Zinc = <89.1

BACKGROUND-01@3'
 09/27/23
 3'

Arsenic = 4.19***
 Barium = 69.6
 Cadmium = <0.0893
 Copper = <8.93
 Lead = <8.93
 Nickel = <8.93
 Selenium = 0.258
 Silver = <0.0893
 Zinc = <89.3



FL-SS-01
(NS)

FL-SS-02
(NS)

BACKGROUND-01

FL-SS-03
(NS)

FL-SS-04

FL-SS-05
(NS)



TABLES

Table 1: Photoionization Detector Reading Summary

Table 2: Soil Analytical Results Summary

Table 3: Groundwater Analytical Results Summary

TABLE 1
PHOTOIONIZATION DETECTOR READING SUMMARY
BOULTER #14-14G
CLOSURE ASSESSMENT
40.306870 / -104.632080
SE¼ SW¼ SEC.14 T4N R65W 6PM
WELD COUNTY, COLORADO
API # 05-123-15089
REMEDIATION # 29232

Sample Location (Latitude/Longitude)	Date	Approximate Depth (feet)	PID Reading (ppm-v)	Lab Submission (Y/N)
FL-SS-01 @ 3' (40.306880 / -104.632107)	09/27/23	3	71.4	Y
FL-SS-02 @ 3' (40.307055 / -104.632132)	09/27/23	3	101.6	Y
FL-SS-03 @ 4' (40.307342 / -104.632172)	09/27/23	4	102.7	Y
FL-SS-04 @ 5' (40.307635 / -104.632196)	09/27/23	5	4228.3	Y
FL-SS-05 @ 3' (40.307915 / -104.632191)	09/27/23	3	1.6	Y
Background-01 @ 3' (40.307098 / -104.632104)	09/27/23	3	2.2	Y

(Y/N) = Yes or No
 ppm-v = parts per million by volume
 PID = Photoionization Detector



TABLE 2
SOIL ANALYTICAL RESULTS SUMMARY
BOULTER #14-14G
CLOSURE ASSESSMENT
40.306870 / -104.632080
SE¼ SW¼ SEC.14 T4N R65W 6PM
WELD COUNTY, COLORADO
API # 05-123-15089
REMEDIATION # 29232

Sample Location		FL-SS-01 @ 3'	FL-SS-02 @ 3'	FL-SS-03 @ 4'	FL-SS-04 @ 5'	FL-SS-05 @ 3'	Background-01 @ 3'				
(Latitude / Longitude)		(40.306880 / -104.632107)	(40.307055 / -104.632132)	(40.307342 / -104.632172)	(40.307635 / -104.632196)	(40.307915 / -104.632191)	(40.307098 / -104.632104)				
Sample Date		9/27/2023	9/27/2023	9/27/2023	9/27/2023	9/27/2023	9/27/2023				
Sample Depth		3	3	4	5	3	3				
PID Reading (ppm-v)		71.4	101.6	102.7	4228.3	1.6	2.2				
Regulatory Limits											
Chemical of Concern	Units	ECMC Table 915-1 RSSLs	ECMC Table 915-1 GSSLs	Local Clean-Up Level							
VOCs											
Benzene	mg/kg	1.2	0.0026	--	<0.00200	<0.00200	<0.00200	0.814*	<0.00200	NA	
Toluene	mg/kg	490	0.69	--	<0.00200	<0.00200	<0.00200	0.00240	<0.00200	NA	
Ethylbenzene	mg/kg	5.8	0.78	--	<0.00200	<0.00200	<0.00200	2.12*	<0.00200	NA	
Total Xylenes	mg/kg	58	9.9	--	<0.00200	<0.00200	<0.00200	0.411	<0.00200	NA	
Naphthalene	mg/kg	2	0.0038	--	<0.00380	<0.00380	<0.00380	0.196*	<0.00380	NA	
1,2,4-Trimethylbenzene	mg/kg	30	0.0081	--	<0.00200	<0.00200	<0.00200	31.1	<0.00200	NA	
1,3,5-Trimethylbenzene	mg/kg	27	0.0087	--	<0.00200	<0.00200	<0.00200	0.0114*	<0.00200	NA	
TOTAL PETROLEUM HYDROCARBONS											
TPH-GRO	mg/kg	500	--	--	<0.200	<0.200	<0.200	482	1.60	NA	
TPH-DRO	mg/kg	500	--	--	<25.0	<25.0	<25.0	943	<25.0	NA	
TPH-RRO	mg/kg	500	--	--	<100	179	<100	179	<100	NA	
POLYCYCLIC AROMATIC HYDROCARBONS											
1-Methyl-naphthalene	mg/kg	18	0.006	--	<0.00201	<0.00201	<0.00201	0.538*	<0.00201	NA	
2-Methyl-naphthalene	mg/kg	24	0.019	--	<0.00201	<0.00201	<0.00201	1.22*	<0.00201	NA	
Acenaphthene	mg/kg	360	0.55	--	<0.00067	<0.00067	<0.00067	0.0437	<0.00067	NA	
Anthracene	mg/kg	1800	5.8	--	<0.00067	<0.00067	<0.00067	0.109	<0.00067	NA	
Benzo(a)-anthracene	mg/kg	1.1	0.011	--	<0.00067	0.00433	<0.00067	0.00299	<0.00067	NA	
Benzo(a)-pyrene	mg/kg	0.11	0.24	--	<0.00067	0.00792	<0.00067	<0.00067	<0.00067	NA	
Benzo(b)-fluoranthene	mg/kg	1.1	0.3	--	<0.00067	0.00626	<0.00067	<0.00067	<0.00067	NA	
Benzo(k)-fluoranthene	mg/kg	11	2.9	--	<0.00067	0.00265	<0.00067	<0.00067	<0.00067	NA	
Chrysene	mg/kg	110	9	--	<0.00067	0.00539	<0.00067	0.0144	<0.00067	NA	
Dibenzo(a,h)-anthracene	mg/kg	0.11	0.096	--	0.000655	0.000948	<0.00067	<0.00067	<0.00067	NA	
Fluoranthene	mg/kg	240	8.9	--	<0.00067	0.00498	<0.00067	0.000776	<0.00067	NA	
Fluorene	mg/kg	240	0.54	--	<0.00067	<0.00067	<0.00067	0.0443	<0.00067	NA	
Indeno(1,2,3-cd)-pyrene	mg/kg	1.1	0.98	--	0.000652	0.00572	<0.00067	<0.00067	<0.00067	NA	
Pyrene	mg/kg	180	1.3	--	<0.00067	0.00418	<0.00067	0.00736	<0.00067	NA	
SOIL SUITABILITY (Inorganics)											
Boron	mg/L	2	--	--	0.159	0.729	1.23	1.32	0.312	NA	
pH	standard unit	6-8.3	--	--	8.50	8.19	8.26	7.99	8.13	8.52	
Sodium Adsorption Ratio (SAR)	--	<6	--	--	0.325	4.51	6.44	3.22	1.09	13.2	
Specific Conductance (EC)	mmhos/cm	<4	--	--	0.317	1.42	1.45	0.733	0.374	NA	
METALS											
Arsenic	mg/kg	0.68***	0.29***	5.23***	NA	NA	NA	1.66***	NA	4.19***	
Barium	mg/kg	15000	82	--	NA	NA	NA	58.7	NA	69.6	
Cadmium	mg/kg	71	0.38	--	NA	NA	NA	0.110	NA	<0.0893	
Copper	mg/kg	3100	46	--	NA	NA	NA	<8.91	NA	<8.93	
Lead	mg/kg	400	14	--	NA	NA	NA	<8.91	NA	<8.93	
Nickel	mg/kg	1500	26	--	NA	NA	NA	<8.91	NA	<8.93	
Selenium	mg/kg	390	0.26	--	NA	NA	NA	0.440*	NA	0.258	
Silver	mg/kg	390	0.8	--	NA	NA	NA	<0.0891	NA	<0.0893	
Zinc	mg/kg	23000	370	--	NA	NA	NA	<89.1	NA	<89.3	
Hexavalent Chromium	mg/kg	0.3**	0.00067**	0.1 to 1.0**	NA	NA	NA	<0.252**	NA	NA	
ECMC = Energy & Carbon Management Commission		NA - Not Analyzed		VOCs - Volatile Organic Compounds							
mg/kg = milligrams per kilogram											
mmhos/cm = millimhos per centimeter		RSSLs = Residential Soil Screening Levels									
PID = Photoionization Detector		GSSLs = Protection of Groundwater Soil Screening Levels									
ppm-v = parts per million by volume		TPH-GRO = Total Petroleum Hydrocarbons - Gasoline Range Organics									
mg/L = milligrams per liter		TPH-DRO = Total Petroleum Hydrocarbons - Diesel Range Organics									
SAR = Sodium Adsorption Ratio		TPH-RRO = Total Petroleum Hydrocarbons - Residual Range Organics									
Notes:											
Values presented with a less than symbol (<) did not contain concentrations at or above the laboratory reporting limit and/or minimum detection limit.											
Values presented in BOLD exceed ECMC Table 915-1 Regulatory Limits. Values presented with asterisk (*) exceed ECMC Table 915-1 GSSLs, only.											
**Achievable practical quantitative limits for Hexavalent Chromium in soils is in the range of 0.1 to 1 mg/kg.											
***Arsenic is naturally occurring in Colorado. The Local Clean-up Level (5.23 mg/kg) is 1.25*Background (4.19 mg/kg).											

TABLE 3
GROUNDWATER ANALYTICAL RESULTS SUMMARY
BOULTER #14-14G
CLOSURE ASSESSMENT
40.306870 / -104.632080
SE¼ SW¼ SEC.14 T4N R65W 6PM
WELD COUNTY, COLORADO
API # 05-123-15089
REMEDATION # 29232

Sample Location (Latitude/Longitude)	Date	Benzene (µg/L)	Toluene (µg/L)	Ethylbenzene (µg/L)	Total Xylenes (µg/L)	Naphthalene (µg/L)	1,2,4- Trimethylbenzene (µg/L)	1,3,5 - Trimethylbenzene (µg/L)
ECMC Table 915-1 Regulatory Limits (µg/L)		5	560	700	1400	140	67	67
GW-01 (40.307342 / -104.632172)	06/28/22	<1.00	<1.00	<1.00	<1.00	<2.00	<2.00	<2.00

ECMC = Energy & Carbon Management Commission
 µg/L - micrograms per liter
 Note: Values presented with a less than symbol (<) indicate concentrations were not observed at or above the laboratory reporting limit.
 Values presented in **bold** typeface exceed their respective ECMC - Regulatory Limits (Table 915-1).



ATTACHMENT A

Photo Log

Boulter #14-14G
API # 05-123-15089
Remediation # 29232

Closure Assessment

September 2023

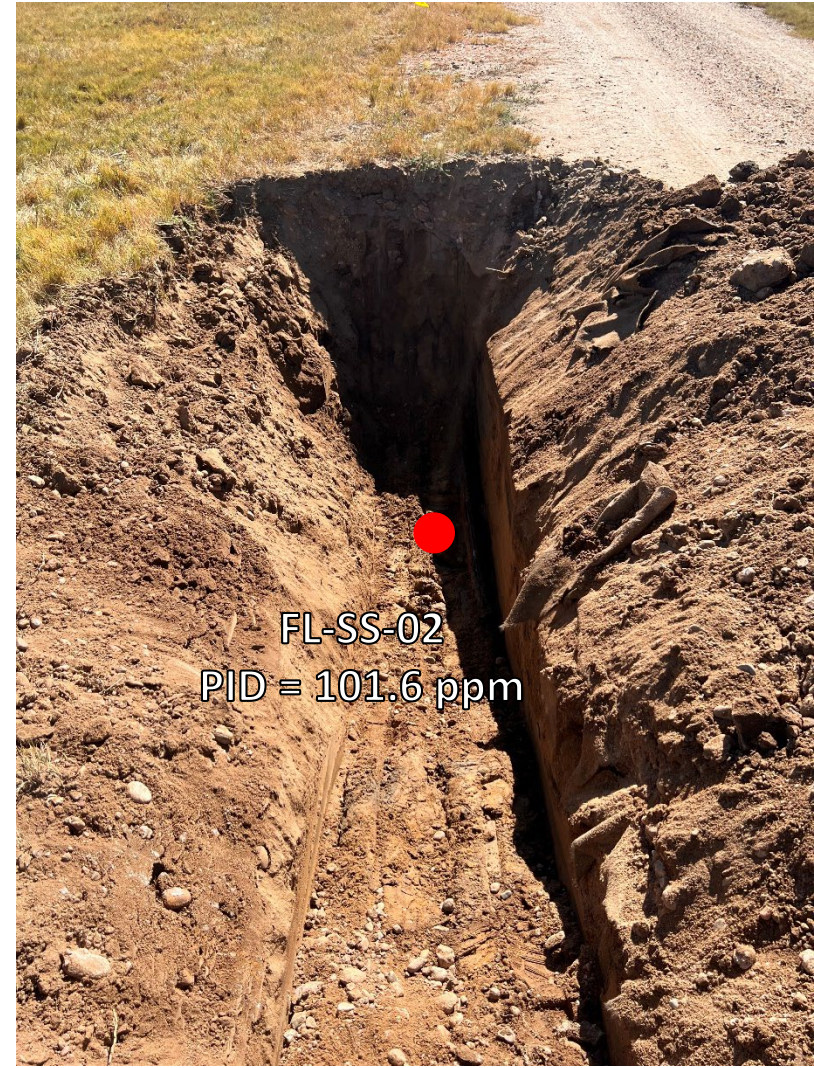


Flowline Removal – 09/27/23



Looking southwest at flowline Pt A/terminus at wellhead

No petroleum hydrocarbon staining or odor observed



Looking south at bellhole/cut point for removal

No petroleum hydrocarbon staining or odor observed

Flowline Removal – 09/27/23



Looking south at bellhole/cut point for removal

Black staining and strong petroleum hydrocarbon odor observed in soil.
Groundwater observed at 5' bgs; no odor or sheen observed on groundwater



Looking south at bellhole/cut point for removal

Black staining observed; no petroleum hydrocarbon odor observed

Flowline Removal – 09/27/23



Looking west at flowline Pt B/terminus at separator

No petroleum hydrocarbon staining or odor observed



ATTACHMENT B

Laboratory Analytical Reports



October 10, 2023

Eagle Environmental Consulting, LLC

Martin C Eckert III

8000 W 44th Ave

Wheat Ridge CO 80033

Project Name - Noble - Boulter #14-14G

Project Number - [none]

Attached are your analytical results for Noble - Boulter #14-14G received by Origins Laboratory, Inc. September 27, 2023. This project is associated with Origins project number Y309703-01.

The analytical results in the following report were analyzed under the guidelines of EPA Methods. These methods are identified as follows; "SW" are defined in SW-846, "EPA" are defined in 40CFR part 136 and "SM" are defined in the most current revision of Standard Methods For the Examination of Water and Wastewater.

The analytical results apply specifically to the samples and analyses specified per the attached Chain of Custody. As such, this report shall not be reproduced except in full, without the written approval of Origin's laboratory.

Unless otherwise noted, the analytical results for all soil samples are reported on a wet weight basis. All analytical analyses were performed under NELAP guidelines unless noted by a data qualifier.

Any holding time exceedances, deviations from the method specifications or deviations from Origins Laboratory's Standard Operating Procedures are outlined in the case narrative.

Thank you for selecting Origins for your analytical needs. Please contact us with any questions concerning this report, or if we can help with anything at all.

Origins Laboratory, Inc.
303.433.1322
o-squad@oelabinc.com



1725 Elk Place, Denver, CO 80211 | Phone: 303.433.1322 | Fax: 303.265.9645

Eagle Environmental Consulting, LLC
8000 W 44th Ave
Wheat Ridge CO 80033

Martin C Eckert III
Project Number: [none]
Project: Noble - Boulter #14-14G

CROSS REFERENCE REPORT

Sample ID	Laboratory ID	Matrix	Date Sampled	Date Received
GW-01	Y309703-01	Water	September 27, 2023 14:20	09/27/2023 16:30

Chain of Custody Modification Request

On 10/10/2023, Kendra Marcum from Eagle Environmental contacted Jordan Bynon via email regarding Y309704 requesting that the project name be revised to Boulter #14-14G. Requested modifications to the chain of custody were made by Jordan Bynon on 10/10/2023.

Origins Laboratory, Inc.



The results in this report apply to the samples analyzed in accordance with the chain of custody document. This analytical report must be reproduced in its entirety.

Eagle Environmental Consulting, LLC
 8000 W 44th Ave
 Wheat Ridge CO 80033

Martin C Eckert III
 Project Number: [none]
 Project: Noble - Boulder #14-14G

Origins Laboratory

F-012207-01-R1
 Effective Date: 01/09/12

Sample Receipt Checklist

Origins Work Order: V309703

Client: Eagle

Client Project ID: BoHer 14-14G

Checklist Completed by: JG

Shipped Via: HD

(UPS, FedEx, Hand Delivered, Pick-up, etc.)

Date/time completed: 9/28/23

Airbill #: N/A

Matrix(s) Received: (Check all that apply): Soil/Solid

Water

Other: _____

Cooler Number/Temperature: 1, 6.0 °C

/ °C

/ °C (Describe)

/ °C

Thermometer ID: T004

Requirement Description	Yes	No	N/A	Comments (if any)
If samples require cooling, was the temperature between 0°C to ≤ 6°C ⁽¹⁾ ?	<input checked="" type="checkbox"/>			
Is there ice present (document if blue ice is used)?	<input checked="" type="checkbox"/>			
Are custody seals present on cooler? (if so, document in comments if they are signed and dated, broken or intact)		<input checked="" type="checkbox"/>		
Are custody seals present on each sample container? (if so, document in comments if they are signed and dated, broken or intact)		<input checked="" type="checkbox"/>		
Were all samples received intact ⁽¹⁾ ?	<input checked="" type="checkbox"/>			
Was adequate sample volume provided ⁽¹⁾ ?	<input checked="" type="checkbox"/>			
Are short holding time analytes or samples with HTs due within 48 hours present ⁽¹⁾ ?		<input checked="" type="checkbox"/>		
Is a chain-of-custody (COC) present and filled out completely ⁽¹⁾ ?	<input checked="" type="checkbox"/>			
Does the COC agree with the number and type of sample bottles received ⁽¹⁾ ?	<input checked="" type="checkbox"/>			
Do the sample IDs on the bottle labels match the COC ⁽¹⁾ ?	<input checked="" type="checkbox"/>			
Is the COC properly relinquished by the client with date and time recorded ⁽¹⁾ ?	<input checked="" type="checkbox"/>			
For volatiles in water – is there headspace (> ¼ inch bubble) present? If yes, contact client and note in narrative.		<input checked="" type="checkbox"/>		
Are samples preserved that require preservation and was it checked ⁽¹⁾ ? (note ID of confirmation instrument used in comments) / (preservation is not confirmed for subcontracted analyses in order to insure sample integrity)/(pH <2 for samples preserved with HNO ₃ , HCL, H ₂ SO ₄) / (pH >10 for samples preserved with Na ₂ SO ₂ +NaOH, ZnAc+NaOH)	<input checked="" type="checkbox"/>			NC
Additional Comments (if any):				

⁽¹⁾If NO, then contact the client before proceeding with analysis and note date/time and person contacted as well as the corrective action to in the additional comments (above) and the case narrative.

Reviewed by: JG (Project Manager)

9-29-23
 Date/Time Reviewed

Origins Laboratory, Inc.

J. Bynon

The results in this report apply to the samples analyzed in accordance with the chain of custody document. This analytical report must be reproduced in its entirety.

Eagle Environmental Consulting, LLC
 8000 W 44th Ave
 Wheat Ridge CO 80033

Martin C Eckert III
 Project Number: [none]
 Project: Noble - Boulder #14-14G

GW-01
9/27/2023 2:20:00PM

Analyte	Result	Reporting Limit	Units	Dilution	Batch	Analyst	Prepared	Analyzed	Notes
---------	--------	-----------------	-------	----------	-------	---------	----------	----------	-------

Origins Laboratory, Inc.
Y309703-01 (Water)

BTEX+N+TMBs by 8260D

1,2,4-Trimethylbenzene	ND	2.00	ug/L	1	B312834	JSM	09/28/2023	10/03/2023	U
1,3,5-Trimethylbenzene	ND	2.00	"	"	"	JSM	"	"	U
Benzene	ND	1.00	"	"	"	JSM	"	"	U
Ethylbenzene	ND	1.00	"	"	"	JSM	"	"	U
Naphthalene	ND	2.00	"	"	"	JSM	"	"	U
Toluene	ND	1.00	"	"	"	JSM	"	"	U
Xylenes, total	ND	1.00	"	"	"	JSM	"	"	U

Surrogate: 1,2-Dichloroethane-d4	108 %	70-130			"	"	"	"
Surrogate: Toluene-d8	101 %	70-130			"	"	"	"
Surrogate: 4-Bromofluorobenzene	103 %	70-130			"	"	"	"

Origins Laboratory, Inc.



The results in this report apply to the samples analyzed in accordance with the chain of custody document. This analytical report must be reproduced in its entirety.

Eagle Environmental Consulting, LLC
 8000 W 44th Ave
 Wheat Ridge CO 80033

Martin C Eckert III
 Project Number: [none]
 Project: Noble - Boulder #14-14G

Volatile Organic Compounds by GC/MS SW846 8260D - Quality Control
Origins Laboratory, Inc.

Analyte	Result	Reporting Limit	Units	Spike Level	Source Result	%REC	%REC Limits	RPD	RPD Limit	Notes
Batch B312834 - EPA 5030B (Water)										
Blank (B312834-BLK1)										
					Prepared: 09/28/2023 Analyzed: 10/02/2023					
1,2,4-Trimethylbenzene	ND	2.00	ug/L							U
1,3,5-Trimethylbenzene	ND	2.00	"							U
Benzene	ND	1.00	"							U
Ethylbenzene	ND	1.00	"							U
Naphthalene	ND	2.00	"							U
Toluene	ND	1.00	"							U
Xylenes, total	ND	1.00	"							U
Surrogate: 1,2-Dichloroethane-d4	61		"	62.5	98.0		70-130			
Surrogate: Toluene-d8	59		"	62.5	95.0		70-130			
Surrogate: 4-Bromofluorobenzene	65		"	62.5	103		70-130			

Origins Laboratory, Inc.



The results in this report apply to the samples analyzed in accordance with the chain of custody document. This analytical report must be reproduced in its entirety.

Eagle Environmental Consulting, LLC
 8000 W 44th Ave
 Wheat Ridge CO 80033

Martin C Eckert III
 Project Number: [none]
 Project: Noble - Boulder #14-14G

Volatile Organic Compounds by GC/MS SW846 8260D - Quality Control
Origins Laboratory, Inc.

Analyte	Result	Reporting Limit	Units	Spike Level	Source Result	%REC	%REC Limits	RPD	RPD Limit	Notes
---------	--------	-----------------	-------	-------------	---------------	------	-------------	-----	-----------	-------

Batch B312834 - EPA 5030B (Water)

LCS (B312834-BS1)

Prepared: 09/28/2023 Analyzed: 10/02/2023

1,2,4-Trimethylbenzene	48.2	2.00	ug/L	50.0		96.5	70-130			
1,3,5-Trimethylbenzene	50.7	2.00	"	50.0		101	70-130			
Benzene	46.2	1.00	"	50.0		92.5	70-130			
Ethylbenzene	51.2	1.00	"	50.0		102	70-130			
m,p-Xylene	100	2.00	"	100		100	70-130			
Naphthalene	43.1	2.00	"	50.0		86.3	70-130			
o-Xylene	47.3	1.00	"	50.0		94.6	70-130			
Toluene	48.0	1.00	"	50.0		96.0	70-130			
Surrogate: 1,2-Dichloroethane-d4	61		"	62.5		97.6	70-130			
Surrogate: Toluene-d8	59		"	62.5		94.5	70-130			
Surrogate: 4-Bromofluorobenzene	65		"	62.5		105	70-130			

Origins Laboratory, Inc.



The results in this report apply to the samples analyzed in accordance with the chain of custody document. This analytical report must be reproduced in its entirety.

Eagle Environmental Consulting, LLC
 8000 W 44th Ave
 Wheat Ridge CO 80033

Martin C Eckert III
 Project Number: [none]
 Project: Noble - Boulder #14-14G

Volatile Organic Compounds by GC/MS SW846 8260D - Quality Control
Origins Laboratory, Inc.

Analyte	Result	Reporting Limit	Units	Spike Level	Source Result	%REC	%REC Limits	RPD	RPD Limit	Notes
---------	--------	-----------------	-------	-------------	---------------	------	-------------	-----	-----------	-------

Batch B312834 - EPA 5030B (Water)

Matrix Spike (B312834-MS1)	Source: Y309700-01			Prepared: 09/28/2023 Analyzed: 10/02/2023						
1,2,4-Trimethylbenzene	37.9	2.00	ug/L	50.0	0.180	75.5	70-130			
1,3,5-Trimethylbenzene	40.1	2.00	"	50.0	ND	80.2	70-130			
Benzene	36.3	1.00	"	50.0	0.210	72.2	70-130			
Ethylbenzene	40.3	1.00	"	50.0	ND	80.5	70-130			
m,p-Xylene	79.0	2.00	"	100	ND	79.0	70-130			
Naphthalene	29.6	2.00	"	50.0	0.150	58.8	70-130			QM-07
o-Xylene	37.2	1.00	"	50.0	0.190	74.0	70-130			
Toluene	36.8	1.00	"	50.0	ND	73.5	70-130			
Surrogate: 1,2-Dichloroethane-d4	60		"	62.5		95.8	70-130			
Surrogate: Toluene-d8	60		"	62.5		95.3	70-130			
Surrogate: 4-Bromofluorobenzene	68		"	62.5		109	70-130			

Origins Laboratory, Inc.



The results in this report apply to the samples analyzed in accordance with the chain of custody document. This analytical report must be reproduced in its entirety.

Eagle Environmental Consulting, LLC
 8000 W 44th Ave
 Wheat Ridge CO 80033

Martin C Eckert III
 Project Number: [none]
 Project: Noble - Boulder #14-14G

Volatile Organic Compounds by GC/MS SW846 8260D - Quality Control
Origins Laboratory, Inc.

Analyte	Result	Reporting Limit	Units	Spike Level	Source Result	%REC	%REC Limits	RPD	RPD Limit	Notes
---------	--------	-----------------	-------	-------------	---------------	------	-------------	-----	-----------	-------

Batch B312834 - EPA 5030B (Water)

Matrix Spike Dup (B312834-MSD1)	Source: Y309700-01			Prepared: 09/28/2023 Analyzed: 10/02/2023						
1,2,4-Trimethylbenzene	43.0	2.00	ug/L	50.0	0.180	85.6	70-130	12.5	20	
1,3,5-Trimethylbenzene	45.0	2.00	"	50.0	ND	90.1	70-130	11.7	20	
Benzene	41.6	1.00	"	50.0	0.210	82.7	70-130	13.5	20	
Ethylbenzene	43.5	1.00	"	50.0	ND	87.0	70-130	7.76	20	
m,p-Xylene	88.2	2.00	"	100	ND	88.2	70-130	11.1	20	
Naphthalene	35.4	2.00	"	50.0	0.150	70.5	70-130	17.9	20	
o-Xylene	41.5	1.00	"	50.0	0.190	82.5	70-130	10.9	20	
Toluene	41.6	1.00	"	50.0	ND	83.1	70-130	12.3	20	
Surrogate: 1,2-Dichloroethane-d4	60		"	62.5		95.9	70-130			
Surrogate: Toluene-d8	61		"	62.5		97.1	70-130			
Surrogate: 4-Bromofluorobenzene	68		"	62.5		109	70-130			

Origins Laboratory, Inc.



The results in this report apply to the samples analyzed in accordance with the chain of custody document. This analytical report must be reproduced in its entirety.

Eagle Environmental Consulting, LLC
8000 W 44th Ave
Wheat Ridge CO 80033

Martin C Eckert III
Project Number: [none]
Project: Noble - Boulter #14-14G

Notes and Definitions

U Sample is Non-Detect.

QM-07 The spike recovery was outside acceptance limits for the MS and/or MSD. The batch was accepted based on acceptable LCS recovery.

ND Analyte NOT DETECTED at or above the reporting limit

RPD Relative Percent Difference

All soil results are reported at a wet weight basis.

Origins Laboratory, Inc.



The results in this report apply to the samples analyzed in accordance with the chain of custody document. This analytical report must be reproduced in its entirety.

Jordan A. Bynon, Project Manager

October 30, 2023

Eagle Environmental Consulting, LLC

Martin C Eckert III

8000 W 44th Ave

Wheat Ridge CO 80033

Project Name - Noble - Boulter #14-14G

Project Number - [none]

Attached are your analytical results for Noble - Boulter #14-14G received by Origins Laboratory, Inc. September 27, 2023. This project is associated with Origins project number Y309704-01.

The analytical results in the following report were analyzed under the guidelines of EPA Methods. These methods are identified as follows; "SW" are defined in SW-846, "EPA" are defined in 40CFR part 136 and "SM" are defined in the most current revision of Standard Methods For the Examination of Water and Wastewater.

The analytical results apply specifically to the samples and analyses specified per the attached Chain of Custody. As such, this report shall not be reproduced except in full, without the written approval of Origin's laboratory.

Unless otherwise noted, the analytical results for all soil samples are reported on a wet weight basis. All analytical analyses were performed under NELAP guidelines unless noted by a data qualifier.

Any holding time exceedances, deviations from the method specifications or deviations from Origins Laboratory's Standard Operating Procedures are outlined in the case narrative.

Thank you for selecting Origins for your analytical needs. Please contact us with any questions concerning this report, or if we can help with anything at all.

Origins Laboratory, Inc.
303.433.1322
o-squad@oelabinc.com



Eagle Environmental Consulting, LLC
8000 W 44th Ave
Wheat Ridge CO 80033

Martin C Eckert III
Project Number: [none]
Project: Noble - Boulter #14-14G

CROSS REFERENCE REPORT

Sample ID	Laboratory ID	Matrix	Date Sampled	Date Received
FL-SS-01@3'	Y309704-01	Soil	September 27, 2023 13:00	09/27/2023 16:30
FL-SS-02@3'	Y309704-02	Soil	September 27, 2023 13:20	09/27/2023 16:30
FL-SS-03@4'	Y309704-03	Soil	September 27, 2023 13:40	09/27/2023 16:30
FL-SS-04@5'	Y309704-04	Soil	September 27, 2023 14:00	09/27/2023 16:30
FL-SS-05@3'	Y309704-05	Soil	September 27, 2023 15:00	09/27/2023 16:30

Chain of Custody Modification Request

On 10/10/2023, Kendra Marcum from Eagle Environmental contacted Jordan Bynon via email regarding Y309704 requesting that the project name be revised to Boulter #14-14G and that 915 Metals be added to FL-SS-04@5'. Requested modifications to the chain of custody were made by Jordan Bynon on 10/10/2023.

Origins Laboratory, Inc.



Jen Pellegrini For Jordan A. Bynon, Project Manager

The results in this report apply to the samples analyzed in accordance with the chain of custody document. This analytical report must be reproduced in its entirety.

Eagle Environmental Consulting, LLC
 8000 W 44th Ave
 Wheat Ridge CO 80033

Martin C Eckert III
 Project Number: [none]
 Project: Noble - Boulter #14-14G

Origins Laboratory

F-012207-01-R1
 Effective Date: 01/09/12

Sample Receipt Checklist

Origins Work Order: Y309704

Client: Eagle
 Client Project ID: Boulter 14-14G

Checklist Completed by: JG
 Date/time completed: 9/28/23

Shipped Via: HB
 (UPS, FedEx, Hand Delivered, Pick-up, etc.)
 Airbill #: N/A

Matrix(s) Received: (Check all that apply): Soil/Solid Water Other: _____
 Cooler Number/Temperature: 1 / 6.0 °C / _____ °C / _____ °C (Describe)
 Thermometer ID: T004

Requirement Description	Yes	No	N/A	Comments (if any)
If samples require cooling, was the temperature between 0°C to ≤ 6°C ⁽¹⁾ ?	<input checked="" type="checkbox"/>			
Is there ice present (document if blue ice is used)	<input checked="" type="checkbox"/>			
Are custody seals present on cooler? (if so, document in comments if they are signed and dated, broken or intact)		<input checked="" type="checkbox"/>		
Are custody seals present on each sample container? (if so, document in comments if they are signed and dated, broken or intact)		<input checked="" type="checkbox"/>		
Were all samples received intact ⁽¹⁾ ?	<input checked="" type="checkbox"/>			
Was adequate sample volume provided ⁽¹⁾ ?	<input checked="" type="checkbox"/>			
Are short holding time analytes or samples with HTs due within 48 hours present ⁽¹⁾ ?		<input checked="" type="checkbox"/>		
Is a chain-of-custody (COC) present and filled out completely ⁽¹⁾ ?	<input checked="" type="checkbox"/>			
Does the COC agree with the number and type of sample bottles received ⁽¹⁾ ?	<input checked="" type="checkbox"/>			
Do the sample IDs on the bottle labels match the COC ⁽¹⁾ ?	<input checked="" type="checkbox"/>			
Is the COC properly relinquished by the client with date and time recorded ⁽¹⁾ ?	<input checked="" type="checkbox"/>			
For volatiles in water – is there headspace (> ¼ inch bubble) present? If yes, contact client and note in narrative.			<input checked="" type="checkbox"/>	
Are samples preserved that require preservation and was it checked ⁽¹⁾ ? (note ID of confirmation instrument used in comments) / (preservation is not confirmed for subcontracted analyses in order to insure sample integrity)/(pH <2 for samples preserved with HNO3, HCL, H2SO4) / (pH >10 for samples preserved with NaAsO2+NaOH, ZnAc+NaOH)			<input checked="" type="checkbox"/>	
Additional Comments (if any):				

⁽¹⁾If NO, then contact the client before proceeding with analysis and note date/time and person contacted as well as the corrective action to in the additional comments (above) and the case narrative.

Reviewed by: JG (Project Manager) Date/Time Reviewed: 9-29-23

Origins Laboratory, Inc.



Jen Pellegrini For Jordan A. Bynon, Project Manager

The results in this report apply to the samples analyzed in accordance with the chain of custody document. This analytical report must be reproduced in its entirety.

Eagle Environmental Consulting, LLC
 8000 W 44th Ave
 Wheat Ridge CO 80033

Martin C Eckert III
 Project Number: [none]
 Project: Noble - Boulter #14-14G

FL-SS-01@3'
9/27/2023 1:00:00PM

Analyte	Result	Min Detection Limit	Reporting Limit	Units	Dilution	Batch	Prepared	Analyzed	Notes
---------	--------	---------------------	-----------------	-------	----------	-------	----------	----------	-------

Origins Laboratory, Inc.
Y309704-01 (Soil)

Boron (DTPA Sorbitol)

Boron	0.159		0.0990	mg/L	1	B3J0308	10/03/2023	10/04/2023	
-------	-------	--	--------	------	---	---------	------------	------------	--

DRO/ORO by EPA 8015D

Diesel (C10-C28)	ND		25.0	mg/kg	1	B3I2802	09/28/2023	10/02/2023	U
Residual Range Organics (C28-C40)	ND		100	"	"	"	"	"	U

Surrogate: o-Terphenyl	89.9 %		50-150			"	"	"	
------------------------	--------	--	--------	--	--	---	---	---	--

GBTEX+TMBs by 8260D

1,2,4-Trimethylbenzene	ND		0.00200	mg/kg	1	B3I2928	09/29/2023	10/01/2023	U
1,3,5-Trimethylbenzene	ND		0.00200	"	"	"	"	"	U
Benzene	ND		0.00200	"	"	"	"	"	U
Ethylbenzene	ND		0.00200	"	"	"	"	"	U
Naphthalene	ND		0.00380	"	"	"	"	"	U
Toluene	ND		0.00200	"	"	"	"	"	U
Xylenes, total	ND		0.00200	"	"	"	"	"	U
Gasoline Range Hydrocarbons	ND		0.200	"	"	"	"	"	U

Origins Laboratory, Inc.



The results in this report apply to the samples analyzed in accordance with the chain of custody document. This analytical report must be reproduced in its entirety.

Jen Pellegrini For Jordan A. Bynon, Project Manager

Eagle Environmental Consulting, LLC
 8000 W 44th Ave
 Wheat Ridge CO 80033

Martin C Eckert III
 Project Number: [none]
 Project: Noble - Boulter #14-14G

FL-SS-01@3'
 9/27/2023 1:00:00PM

Analyte	Result	Min Detection Limit	Reporting Limit	Units	Dilution	Batch	Prepared	Analyzed	Notes
---------	--------	---------------------	-----------------	-------	----------	-------	----------	----------	-------

Origins Laboratory, Inc.
 Y309704-01 (Soil)

GBTEX+TMBs by 8260D

Surrogate: 1,2-Dichloroethane-d4	108 %		70-130			B31292 8	09/29/2023	10/01/2023	
Surrogate: Toluene-d8	98.3 %		70-130			"	"	"	
Surrogate: 4-Bromofluorobenzene	103 %		70-130			"	"	"	

Metals by Saturated Paste by EPA 6010

Calcium	0.613		0.499	meq/L	10	[CALC]	10/02/2023	10/04/2023	
Magnesium	ND		0.823	"	"	"	"	"	
Sodium	ND		0.435	"	"	"	"	"	

PAH by 8270D SIM

1-Methylnaphthalene	ND	0.00109	0.00201	mg/Kg	1	L707994	10/02/2023	10/03/2023	
2-Methylnaphthalene	ND	0.00194	0.00201	"	"	"	"	"	
Acenaphthene	ND	0.000304	0.00067	"	"	"	"	"	
Anthracene	ND	0.000334	0.00067	"	"	"	"	"	
Benzo(a)anthracene	ND	0.000493	0.00067	"	"	"	"	"	
Benzo(a)pyrene	ND	0.000468	0.00067	"	"	"	"	"	
Benzo(b)fluoranthene	ND	0.000585	0.00067	"	"	"	"	"	
Benzo(k)fluoranthene	ND	0.000437	0.00067	"	"	"	"	"	
Chrysene	ND	0.000624	0.00067	"	"	"	"	"	
Dibenz(a,h)anthracene	0.000655	0.000614	0.00067	"	"	"	"	"	J

Origins Laboratory, Inc.



The results in this report apply to the samples analyzed in accordance with the chain of custody document. This analytical report must be reproduced in its entirety.

Jen Pellegrini For Jordan A. Bynon, Project Manager

Eagle Environmental Consulting, LLC
 8000 W 44th Ave
 Wheat Ridge CO 80033

Martin C Eckert III
 Project Number: [none]
 Project: Noble - Boulter #14-14G

FL-SS-01@3'

9/27/2023 1:00:00PM

Analyte	Result	Min Detection Limit	Reporting Limit	Units	Dilution	Batch	Prepared	Analyzed	Notes
---------	--------	---------------------	-----------------	-------	----------	-------	----------	----------	-------

Waypoint Analytical, LLC.
Y309704-01 (Soil)

PAH by 8270D SIM

Fluoranthene	ND	0.000394	0.00067	mg/Kg	1	L707994	10/02/2023	10/03/2023	
Fluorene	ND	0.000286	0.00067	"	"	"	"	"	
Indeno(1,2,3-cd)pyrene	0.000652	0.000627	0.00067	"	"	"	"	"	J
Pyrene	ND	0.000643	0.00067	"	"	"	"	"	

Surrogate: 2-Fluorobiphenyl	45.9 %		33-115			"	"	"	
Surrogate: 4-Terphenyl-d14	50.8 %		33-122			"	"	"	
Surrogate: Nitrobenzene-d5	42 %		29-110			"	"	"	

pH in Soil by 9045D

pH	8.50			pH Units	1	B3J0213	10/02/2023	10/03/2023	
----	-------------	--	--	----------	---	---------	------------	------------	--

SAR by 20B Saturated Paste

SAR	0.325		0.0100	SAR	1	B3J0206	10/02/2023	10/04/2023	
-----	--------------	--	--------	-----	---	---------	------------	------------	--

Specific Conductance Mod. 9050A

Specific Conductance (EC)	0.317		0.00500	mmhos/cm	1	B3J0213	10/02/2023	10/03/2023	
---------------------------	--------------	--	---------	----------	---	---------	------------	------------	--

Origins Laboratory, Inc.



The results in this report apply to the samples analyzed in accordance with the chain of custody document. This analytical report must be reproduced in its entirety.

Jen Pellegrini For Jordan A. Bynon, Project Manager

Eagle Environmental Consulting, LLC
 8000 W 44th Ave
 Wheat Ridge CO 80033

Martin C Eckert III
 Project Number: [none]
 Project: Noble - Boulter #14-14G

FL-SS-02@3'

9/27/2023 1:20:00PM

Analyte	Result	Min Detection Limit	Reporting Limit	Units	Dilution	Batch	Prepared	Analyzed	Notes
---------	--------	---------------------	-----------------	-------	----------	-------	----------	----------	-------

Origins Laboratory, Inc.
Y309704-02 (Soil)

Boron (DTPA Sorbitol)

Boron	0.729		0.0982	mg/L	1	B3J0308	10/03/2023	10/04/2023	
-------	-------	--	--------	------	---	---------	------------	------------	--

DRO/ORO by EPA 8015D

Diesel (C10-C28)	ND		25.0	mg/kg	1	B3I2802	09/28/2023	10/02/2023	U
Residual Range Organics (C28-C40)	179		100	"	"	"	"	"	

Surrogate: o-Terphenyl	87.5 %		50-150			"	"	"	
------------------------	--------	--	--------	--	--	---	---	---	--

GBTEX+TMBs by 8260D

1,2,4-Trimethylbenzene	ND		0.00200	mg/kg	1	B3I2928	09/29/2023	10/01/2023	U
1,3,5-Trimethylbenzene	ND		0.00200	"	"	"	"	"	U
Benzene	ND		0.00200	"	"	"	"	"	U
Ethylbenzene	ND		0.00200	"	"	"	"	"	U
Naphthalene	ND		0.00380	"	"	"	"	"	U
Toluene	ND		0.00200	"	"	"	"	"	U
Xylenes, total	ND		0.00200	"	"	"	"	"	U
Gasoline Range Hydrocarbons	ND		0.200	"	"	"	"	"	U

Origins Laboratory, Inc.



Jen Pellegrini For Jordan A. Bynon, Project Manager

The results in this report apply to the samples analyzed in accordance with the chain of custody document. This analytical report must be reproduced in its entirety.

Eagle Environmental Consulting, LLC
 8000 W 44th Ave
 Wheat Ridge CO 80033

Martin C Eckert III
 Project Number: [none]
 Project: Noble - Boulder #14-14G

FL-SS-02@3'
 9/27/2023 1:20:00PM

Analyte	Result	Min Detection Limit	Reporting Limit	Units	Dilution	Batch	Prepared	Analyzed	Notes
---------	--------	---------------------	-----------------	-------	----------	-------	----------	----------	-------

Origins Laboratory, Inc.
 Y309704-02 (Soil)

GBTEX+TMBs by 8260D

Surrogate: 1,2-Dichloroethane-d4	108 %		70-130			B31292 8	09/29/2023	10/01/2023	
Surrogate: Toluene-d8	100 %		70-130			"	"	"	
Surrogate: 4-Bromofluorobenzene	101 %		70-130			"	"	"	

Metals by Saturated Paste by EPA 6010

Calcium	2.39		0.499	meq/L	10	[CALC]	10/02/2023	10/04/2023	
Magnesium	3.28		0.823	"	"	"	"	"	
Sodium	7.58		0.435	"	"	"	"	"	

PAH by 8270D SIM

1-Methylnaphthalene	ND	0.00109	0.00201	mg/Kg	1	L707994	10/02/2023	10/03/2023	
2-Methylnaphthalene	ND	0.00194	0.00201	"	"	"	"	"	
Acenaphthene	ND	0.000304	0.00067	"	"	"	"	"	
Anthracene	ND	0.000334	0.00067	"	"	"	"	"	
Benzo(a)anthracene	0.00433	0.000493	0.00067	"	"	"	"	"	
Benzo(a)pyrene	0.00792	0.000468	0.00067	"	"	"	"	"	
Benzo(b)fluoranthene	0.00626	0.000585	0.00067	"	"	"	"	"	
Benzo(k)fluoranthene	0.00265	0.000437	0.00067	"	"	"	"	"	
Chrysene	0.00539	0.000624	0.00067	"	"	"	"	"	
Dibenz(a,h)anthracene	0.000948	0.000614	0.00067	"	"	"	"	"	
Fluoranthene	0.00498	0.000394	0.00067	"	"	"	"	"	

Origins Laboratory, Inc.



The results in this report apply to the samples analyzed in accordance with the chain of custody document. This analytical report must be reproduced in its entirety.

Jen Pellegrini For Jordan A. Bynon, Project Manager

Eagle Environmental Consulting, LLC
 8000 W 44th Ave
 Wheat Ridge CO 80033

Martin C Eckert III
 Project Number: [none]
 Project: Noble - Boulder #14-14G

FL-SS-02@3'

9/27/2023 1:20:00PM

Analyte	Result	Min Detection Limit	Reporting Limit	Units	Dilution	Batch	Prepared	Analyzed	Notes
---------	--------	---------------------	-----------------	-------	----------	-------	----------	----------	-------

Waypoint Analytical, LLC.
Y309704-02 (Soil)

PAH by 8270D SIM

Fluorene	ND	0.000286	0.00067	mg/Kg	1	L707994	10/02/2023	10/03/2023	
Indeno(1,2,3-cd)pyrene	0.00572	0.000627	0.00067	"	"	"	"	"	
Pyrene	0.00418	0.000643	0.00067	"	"	"	"	"	

Surrogate: 2-Fluorobiphenyl	45.3 %		33-115			"	"	"	
Surrogate: 4-Terphenyl-d14	45.9 %		33-122			"	"	"	
Surrogate: Nitrobenzene-d5	41.1 %		29-110			"	"	"	

pH in Soil by 9045D

pH	8.19			pH Units	1	B3J0213	10/02/2023	10/03/2023	
----	-------------	--	--	----------	---	---------	------------	------------	--

SAR by 20B Saturated Paste

SAR	4.51		0.0100	SAR	1	B3J0206	10/02/2023	10/04/2023	
-----	-------------	--	--------	-----	---	---------	------------	------------	--

Specific Conductance Mod. 9050A

Specific Conductance (EC)	1.42		0.00500	mmhos/cm	1	B3J0213	10/02/2023	10/03/2023	
---------------------------	-------------	--	---------	----------	---	---------	------------	------------	--

Origins Laboratory, Inc.



The results in this report apply to the samples analyzed in accordance with the chain of custody document. This analytical report must be reproduced in its entirety.

Jen Pellegrini For Jordan A. Bynon, Project Manager

Eagle Environmental Consulting, LLC
 8000 W 44th Ave
 Wheat Ridge CO 80033

Martin C Eckert III
 Project Number: [none]
 Project: Noble - Boulter #14-14G

FL-SS-03@4'

9/27/2023 1:40:00PM

Analyte	Result	Min Detection Limit	Reporting Limit	Units	Dilution	Batch	Prepared	Analyzed	Notes
---------	--------	---------------------	-----------------	-------	----------	-------	----------	----------	-------

Origins Laboratory, Inc.
Y309704-03 (Soil)

Boron (DTPA Sorbitol)

Boron	1.23		0.0981	mg/L	1	B3J0308	10/03/2023	10/04/2023	
-------	------	--	--------	------	---	---------	------------	------------	--

DRO/ORO by EPA 8015D

Diesel (C10-C28)	ND		25.0	mg/kg	1	B3I2802	09/28/2023	10/02/2023	U
Residual Range Organics (C28-C40)	ND		100	"	"	"	"	"	U

Surrogate: o-Terphenyl	87.3 %		50-150			"	"	"	
------------------------	--------	--	--------	--	--	---	---	---	--

GBTEX+TMBs by 8260D

1,2,4-Trimethylbenzene	ND		0.00200	mg/kg	1	B3I2928	09/29/2023	10/01/2023	U
1,3,5-Trimethylbenzene	ND		0.00200	"	"	"	"	"	U
Benzene	ND		0.00200	"	"	"	"	"	U
Ethylbenzene	ND		0.00200	"	"	"	"	"	U
Naphthalene	ND		0.00380	"	"	"	"	"	U
Toluene	ND		0.00200	"	"	"	"	"	U
Xylenes, total	ND		0.00200	"	"	"	"	"	U
Gasoline Range Hydrocarbons	ND		0.200	"	"	"	"	"	U

Origins Laboratory, Inc.



The results in this report apply to the samples analyzed in accordance with the chain of custody document. This analytical report must be reproduced in its entirety.

Jen Pellegrini For Jordan A. Bynon, Project Manager

Eagle Environmental Consulting, LLC
 8000 W 44th Ave
 Wheat Ridge CO 80033

Martin C Eckert III
 Project Number: [none]
 Project: Noble - Boulder #14-14G

FL-SS-03@4'
 9/27/2023 1:40:00PM

Analyte	Result	Min Detection Limit	Reporting Limit	Units	Dilution	Batch	Prepared	Analyzed	Notes
---------	--------	---------------------	-----------------	-------	----------	-------	----------	----------	-------

Origins Laboratory, Inc.
 Y309704-03 (Soil)

GBTEX+TMBs by 8260D

Surrogate: 1,2-Dichloroethane-d4	111 %		70-130			B31292 8	09/29/2023	10/01/2023	
Surrogate: Toluene-d8	99.6 %		70-130			"	"	"	
Surrogate: 4-Bromofluorobenzene	102 %		70-130			"	"	"	

Metals by Saturated Paste by EPA 6010

Calcium	1.20		0.499	meq/L	10	[CALC]	10/02/2023	10/04/2023	
Magnesium	3.62		0.823	"	"	"	"	"	
Sodium	10.0		0.435	"	"	"	"	"	

PAH by 8270D SIM

1-Methylnaphthalene	ND	0.00109	0.00201	mg/Kg	1	L707994	10/02/2023	10/03/2023	
2-Methylnaphthalene	ND	0.00194	0.00201	"	"	"	"	"	
Acenaphthene	ND	0.000304	0.00067	"	"	"	"	"	
Anthracene	ND	0.000334	0.00067	"	"	"	"	"	
Benzo(a)anthracene	ND	0.000493	0.00067	"	"	"	"	"	
Benzo(a)pyrene	ND	0.000468	0.00067	"	"	"	"	"	
Benzo(b)fluoranthene	ND	0.000585	0.00067	"	"	"	"	"	
Benzo(k)fluoranthene	ND	0.000437	0.00067	"	"	"	"	"	
Chrysene	ND	0.000624	0.00067	"	"	"	"	"	
Dibenz(a,h)anthracene	ND	0.000614	0.00067	"	"	"	"	"	

Origins Laboratory, Inc.



The results in this report apply to the samples analyzed in accordance with the chain of custody document. This analytical report must be reproduced in its entirety.

Jen Pellegrini For Jordan A. Bynon, Project Manager

Eagle Environmental Consulting, LLC
 8000 W 44th Ave
 Wheat Ridge CO 80033

Martin C Eckert III
 Project Number: [none]
 Project: Noble - Boulter #14-14G

FL-SS-03@4'

9/27/2023 1:40:00PM

Analyte	Result	Min Detection Limit	Reporting Limit	Units	Dilution	Batch	Prepared	Analyzed	Notes
---------	--------	---------------------	-----------------	-------	----------	-------	----------	----------	-------

Waypoint Analytical, LLC.
Y309704-03 (Soil)

PAH by 8270D SIM

Fluoranthene	ND	0.000394	0.00067	mg/Kg	1	L707994	10/02/2023	10/03/2023	
Fluorene	ND	0.000286	0.00067	"	"	"	"	"	
Indeno(1,2,3-cd)pyrene	ND	0.000627	0.00067	"	"	"	"	"	
Pyrene	ND	0.000643	0.00067	"	"	"	"	"	

Surrogate: 2-Fluorobiphenyl	42 %		33-115			"	"	"	
Surrogate: 4-Terphenyl-d14	45.3 %		33-122			"	"	"	
Surrogate: Nitrobenzene-d5	39.3 %		29-110			"	"	"	

pH in Soil by 9045D

pH	8.26			pH Units	1	B3J0213	10/02/2023	10/03/2023	
----	------	--	--	----------	---	---------	------------	------------	--

SAR by 20B Saturated Paste

SAR	6.44		0.0100	SAR	1	B3J0206	10/02/2023	10/04/2023	
-----	------	--	--------	-----	---	---------	------------	------------	--

Specific Conductance Mod. 9050A

Specific Conductance (EC)	1.45		0.00500	mmhos/cm	1	B3J0213	10/02/2023	10/03/2023	
---------------------------	------	--	---------	----------	---	---------	------------	------------	--

Origins Laboratory, Inc.



The results in this report apply to the samples analyzed in accordance with the chain of custody document. This analytical report must be reproduced in its entirety.

Jen Pellegrini For Jordan A. Bynon, Project Manager

Eagle Environmental Consulting, LLC
 8000 W 44th Ave
 Wheat Ridge CO 80033

Martin C Eckert III
 Project Number: [none]
 Project: Noble - Boulter #14-14G

FL-SS-04@5'
9/27/2023 2:00:00PM

Analyte	Result	Min Detection Limit	Reporting Limit	Units	Dilution	Batch	Prepared	Analyzed	Notes
---------	--------	---------------------	-----------------	-------	----------	-------	----------	----------	-------

Origins Laboratory, Inc.
Y309704-04 (Soil)

Boron (DTPA Sorbitol)

Boron	1.32		0.0998	mg/L	1	B3J0308	10/03/2023	10/04/2023	
-------	------	--	--------	------	---	---------	------------	------------	--

DRO/ORO by EPA 8015D

Diesel (C10-C28)	943		25.0	mg/kg	1	B3I2802	09/28/2023	10/02/2023	
Residual Range Organics (C28-C40)	179		100	"	"	"	"	"	

Surrogate: o-Terphenyl	84.9 %		50-150			"	"	"	
------------------------	--------	--	--------	--	--	---	---	---	--

GBTEX+TMBs by 8260D

1,2,4-Trimethylbenzene	31.1		0.500	mg/kg	250	B3I2928	09/29/2023	10/06/2023	
1,3,5-Trimethylbenzene	0.0114		0.00200	"	1	"	"	10/01/2023	
Benzene	0.814		0.0500	"	25	"	"	10/03/2023	
Ethylbenzene	2.12		0.0500	"	"	"	"	"	
Naphthalene	0.196		0.00380	"	1	"	"	10/01/2023	
Toluene	0.00240		0.00200	"	"	"	"	"	
Xylenes, total	0.411		0.00200	"	"	"	"	"	
Gasoline Range Hydrocarbons	482		5.00	"	25	"	"	10/03/2023	

Surrogate: 1,2-Dichloroethane-d4	100 %		70-130			"	"	"	
Surrogate: Toluene-d8	143 %		70-130			"	"	"	S-GC

Origins Laboratory, Inc.



The results in this report apply to the samples analyzed in accordance with the chain of custody document. This analytical report must be reproduced in its entirety.

Jen Pellegrini For Jordan A. Bynon, Project Manager

Eagle Environmental Consulting, LLC
 8000 W 44th Ave
 Wheat Ridge CO 80033

Martin C Eckert III
 Project Number: [none]
 Project: Noble - Boulter #14-14G

FL-SS-04@5'

9/27/2023 2:00:00PM

Analyte	Result	Min Detection Limit	Reporting Limit	Units	Dilution	Batch	Prepared	Analyzed	Notes
---------	--------	---------------------	-----------------	-------	----------	-------	----------	----------	-------

Origins Laboratory, Inc.
Y309704-04 (Soil)

GBTEX+TMBs by 8260D

Surrogate: 4-Bromofluorobenzene	98.8 %		70-130			B31292 8	09/29/2023	10/03/2023	
---------------------------------	--------	--	--------	--	--	-------------	------------	------------	--

Metals by Saturated Paste by EPA 6010

Calcium	1.11		0.499	meq/L	10	[CALC]	10/02/2023	10/04/2023	
Magnesium	2.76		0.823	"	"	"	"	"	
Sodium	4.48		0.435	"	"	"	"	"	

PAH by 8270D SIM

1-Methylnaphthalene	0.538	0.00109	0.00201	mg/Kg	1	L707994	10/02/2023	10/03/2023	
2-Methylnaphthalene	1.22	0.00972	0.0101	"	5	"	"	"	
Acenaphthene	0.0437	0.000304	0.00067	"	1	"	"	"	
Anthracene	0.109	0.000334	0.00067	"	"	"	"	"	
Benzo(a)anthracene	0.00299	0.000493	0.00067	"	"	"	"	"	
Benzo(a)pyrene	ND	0.000468	0.00067	"	"	"	"	"	
Benzo(b)fluoranthene	ND	0.000585	0.00067	"	"	"	"	"	
Benzo(k)fluoranthene	ND	0.000437	0.00067	"	"	"	"	"	
Chrysene	0.0144	0.000624	0.00067	"	"	"	"	"	
Dibenz(a,h)anthracene	ND	0.000614	0.00067	"	"	"	"	"	
Fluoranthene	0.000776	0.000394	0.00067	"	"	"	"	"	
Fluorene	0.0443	0.000286	0.00067	"	"	"	"	"	
Indeno(1,2,3-cd)pyrene	ND	0.000627	0.00067	"	"	"	"	"	

Origins Laboratory, Inc.



The results in this report apply to the samples analyzed in accordance with the chain of custody document. This analytical report must be reproduced in its entirety.

Jen Pellegrini For Jordan A. Bynon, Project Manager

Eagle Environmental Consulting, LLC
 8000 W 44th Ave
 Wheat Ridge CO 80033

Martin C Eckert III
 Project Number: [none]
 Project: Noble - Boulter #14-14G

FL-SS-04@5'

9/27/2023 2:00:00PM

Analyte	Result	Min Detection Limit	Reporting Limit	Units	Dilution	Batch	Prepared	Analyzed	Notes
---------	--------	---------------------	-----------------	-------	----------	-------	----------	----------	-------

Waypoint Analytical, LLC.
Y309704-04 (Soil)

PAH by 8270D SIM

Pyrene	0.00736	0.000643	0.00067	mg/Kg	1	L707994	10/02/2023	10/03/2023	
--------	---------	----------	---------	-------	---	---------	------------	------------	--

Surrogate: 2-Fluorobiphenyl	38.7 %		33-115			"	"	"	
Surrogate: 4-Terphenyl-d14	50.8 %		33-122			"	"	"	
Surrogate: Nitrobenzene-d5	36.3 %		29-110			"	"	"	

pH in Soil by 9045D

pH	7.99			pH Units	1	B3J0213	10/02/2023	10/03/2023	
----	------	--	--	----------	---	---------	------------	------------	--

SAR by 20B Saturated Paste

SAR	3.22		0.0100	SAR	1	B3J0206	10/02/2023	10/04/2023	
-----	------	--	--------	-----	---	---------	------------	------------	--

Specific Conductance Mod. 9050A

Specific Conductance (EC)	0.733		0.00500	mmhos/cm	1	B3J0213	10/02/2023	10/03/2023	
---------------------------	-------	--	---------	----------	---	---------	------------	------------	--

Table 915 metals by EPA 6020B

Arsenic	1.66		0.0891	mg/kg	10	B3J1018	10/10/2023	10/13/2023	
Barium	58.7		8.91	"	"	"	"	"	
Cadmium	0.110		0.0891	"	"	"	"	"	
Copper	ND		8.91	"	"	"	"	"	U

Origins Laboratory, Inc.



The results in this report apply to the samples analyzed in accordance with the chain of custody document. This analytical report must be reproduced in its entirety.

Jen Pellegrini For Jordan A. Bynon, Project Manager

Eagle Environmental Consulting, LLC
 8000 W 44th Ave
 Wheat Ridge CO 80033

Martin C Eckert III
 Project Number: [none]
 Project: Noble - Boulter #14-14G

FL-SS-04@5'

9/27/2023 2:00:00PM

Analyte	Result	Min Detection Limit	Reporting Limit	Units	Dilution	Batch	Prepared	Analyzed	Notes
---------	--------	---------------------	-----------------	-------	----------	-------	----------	----------	-------

Origins Laboratory, Inc.
 Y309704-04 (Soil)

Table 915 metals by EPA 6020B

Lead	ND		8.91	mg/kg	10	B3J1018	10/10/2023	10/13/2023	U
Nickel	ND		8.91	"	"	"	"	"	U
Selenium	0.440		0.0891	"	"	"	"	"	
Silver	ND		0.0891	"	"	"	"	"	U
Zinc	ND		89.1	"	"	"	"	"	U

Total Metals by 7196A

Chromium, Hexavalent	ND	0.252	0.517	mg/Kg	1	L713313	09/27/2023	10/26/2023	
----------------------	----	-------	-------	-------	---	---------	------------	------------	--

Origins Laboratory, Inc.



Jen Pellegrini For Jordan A. Bynon, Project Manager

The results in this report apply to the samples analyzed in accordance with the chain of custody document. This analytical report must be reproduced in its entirety.

Eagle Environmental Consulting, LLC
 8000 W 44th Ave
 Wheat Ridge CO 80033

Martin C Eckert III
 Project Number: [none]
 Project: Noble - Boulter #14-14G

FL-SS-05@3'

9/27/2023 3:00:00PM

Analyte	Result	Min Detection Limit	Reporting Limit	Units	Dilution	Batch	Prepared	Analyzed	Notes
---------	--------	---------------------	-----------------	-------	----------	-------	----------	----------	-------

Origins Laboratory, Inc.
Y309704-05 (Soil)

Boron (DTPA Sorbitol)

Boron	0.312		0.0986	mg/L	1	B3J0308	10/03/2023	10/04/2023	
-------	-------	--	--------	------	---	---------	------------	------------	--

DRO/ORO by EPA 8015D

Diesel (C10-C28)	ND		25.0	mg/kg	1	B3I2802	09/28/2023	10/02/2023	U
Residual Range Organics (C28-C40)	ND		100	"	"	"	"	"	U

Surrogate: o-Terphenyl	85.1 %		50-150			"	"	"	
------------------------	--------	--	--------	--	--	---	---	---	--

GBTEX+TMBs by 8260D

1,2,4-Trimethylbenzene	ND		0.00200	mg/kg	1	B3I2928	09/29/2023	10/03/2023	U
1,3,5-Trimethylbenzene	ND		0.00200	"	"	"	"	"	U
Benzene	ND		0.00200	"	"	"	"	"	U
Ethylbenzene	ND		0.00200	"	"	"	"	"	U
Naphthalene	ND		0.00380	"	"	"	"	"	U
Toluene	ND		0.00200	"	"	"	"	"	U
Xylenes, total	ND		0.00200	"	"	"	"	"	U
Gasoline Range Hydrocarbons	1.60		0.200	"	"	"	"	10/01/2023	

Origins Laboratory, Inc.



The results in this report apply to the samples analyzed in accordance with the chain of custody document. This analytical report must be reproduced in its entirety.

Jen Pellegrini For Jordan A. Bynon, Project Manager

Eagle Environmental Consulting, LLC
 8000 W 44th Ave
 Wheat Ridge CO 80033

Martin C Eckert III
 Project Number: [none]
 Project: Noble - Boulter #14-14G

FL-SS-05@3'

9/27/2023 3:00:00PM

Analyte	Result	Min Detection Limit	Reporting Limit	Units	Dilution	Batch	Prepared	Analyzed	Notes
---------	--------	---------------------	-----------------	-------	----------	-------	----------	----------	-------

Origins Laboratory, Inc.
Y309704-05 (Soil)

GBTEX+TMBs by 8260D

Surrogate: 1,2-Dichloroethane-d4	101 %		70-130			B31292 8	09/29/2023	10/03/2023	
Surrogate: Toluene-d8	99.9 %		70-130			"	"	"	
Surrogate: 4-Bromofluorobenzene	99.5 %		70-130			"	"	"	

Metals by Saturated Paste by EPA 6010

Calcium	1.42		0.499	meq/L	10	[CALC]	10/02/2023	10/04/2023	
Magnesium	0.913		0.823	"	"	"	"	"	
Sodium	1.18		0.435	"	"	"	"	"	

PAH by 8270D SIM

1-Methylnaphthalene	ND	0.00109	0.00201	mg/Kg	1	L707994	10/02/2023	10/03/2023	
2-Methylnaphthalene	ND	0.00194	0.00201	"	"	"	"	"	
Acenaphthene	ND	0.000304	0.00067	"	"	"	"	"	
Anthracene	ND	0.000334	0.00067	"	"	"	"	"	
Benzo(a)anthracene	ND	0.000493	0.00067	"	"	"	"	"	
Benzo(a)pyrene	ND	0.000468	0.00067	"	"	"	"	"	
Benzo(b)fluoranthene	ND	0.000585	0.00067	"	"	"	"	"	
Benzo(k)fluoranthene	ND	0.000437	0.00067	"	"	"	"	"	
Chrysene	ND	0.000624	0.00067	"	"	"	"	"	
Dibenz(a,h)anthracene	ND	0.000614	0.00067	"	"	"	"	"	

Origins Laboratory, Inc.



The results in this report apply to the samples analyzed in accordance with the chain of custody document. This analytical report must be reproduced in its entirety.

Jen Pellegrini For Jordan A. Bynon, Project Manager

Eagle Environmental Consulting, LLC
 8000 W 44th Ave
 Wheat Ridge CO 80033

Martin C Eckert III
 Project Number: [none]
 Project: Noble - Boulter #14-14G

FL-SS-05@3'

9/27/2023 3:00:00PM

Analyte	Result	Min Detection Limit	Reporting Limit	Units	Dilution	Batch	Prepared	Analyzed	Notes
---------	--------	---------------------	-----------------	-------	----------	-------	----------	----------	-------

Waypoint Analytical, LLC.
Y309704-05 (Soil)

PAH by 8270D SIM

Fluoranthene	ND	0.000394	0.00067	mg/Kg	1	L707994	10/02/2023	10/03/2023	
Fluorene	ND	0.000286	0.00067	"	"	"	"	"	
Indeno(1,2,3-cd)pyrene	ND	0.000627	0.00067	"	"	"	"	"	
Pyrene	ND	0.000643	0.00067	"	"	"	"	"	

Surrogate: 2-Fluorobiphenyl	36.8 %		33-115			"	"	"	
Surrogate: 4-Terphenyl-d14	43.5 %		33-122			"	"	"	
Surrogate: Nitrobenzene-d5	34.7 %		29-110			"	"	"	

pH in Soil by 9045D

pH	8.13			pH Units	1	B3J0213	10/02/2023	10/03/2023	
----	------	--	--	----------	---	---------	------------	------------	--

SAR by 20B Saturated Paste

SAR	1.09		0.0100	SAR	1	B3J0206	10/02/2023	10/04/2023	
-----	------	--	--------	-----	---	---------	------------	------------	--

Specific Conductance Mod. 9050A

Specific Conductance (EC)	0.374		0.00500	mmhos/cm	1	B3J0213	10/02/2023	10/03/2023	
---------------------------	-------	--	---------	----------	---	---------	------------	------------	--

Origins Laboratory, Inc.



The results in this report apply to the samples analyzed in accordance with the chain of custody document. This analytical report must be reproduced in its entirety.

Jen Pellegrini For Jordan A. Bynon, Project Manager

Eagle Environmental Consulting, LLC
 8000 W 44th Ave
 Wheat Ridge CO 80033

Martin C Eckert III
 Project Number: [none]
 Project: Noble - Boulter #14-14G

Extractable Petroleum Hydrocarbons by 8015D - Quality Control
Origins Laboratory, Inc.

Analyte	Result	Reporting Limit	Units	Spike Level	Source Result	%REC	%REC Limits	RPD	RPD Limit	Notes
Batch B312802 - EPA 3550B										
Blank (B312802-BLK1)										
					Prepared: 09/28/2023 Analyzed: 10/02/2023					
Diesel (C10-C28)	ND	25.0	mg/kg							U
Residual Range Organics (C28-C40)	ND	100	"							U
Surrogate: o-Terphenyl	20		"	24.9		82.4	50-150			

Origins Laboratory, Inc.



Jen Pellegrini For Jordan A. Bynon, Project Manager

The results in this report apply to the samples analyzed in accordance with the chain of custody document. This analytical report must be reproduced in its entirety.

Eagle Environmental Consulting, LLC
 8000 W 44th Ave
 Wheat Ridge CO 80033

Martin C Eckert III
 Project Number: [none]
 Project: Noble - Boulter #14-14G

Extractable Petroleum Hydrocarbons by 8015D - Quality Control
Origins Laboratory, Inc.

Analyte	Result	Reporting Limit	Units	Spike Level	Source Result	%REC	%REC Limits	RPD	RPD Limit	Notes
---------	--------	-----------------	-------	-------------	---------------	------	-------------	-----	-----------	-------

Batch B312802 - EPA 3550B

LCS (B312802-BS1)

Prepared: 09/28/2023 Analyzed: 10/02/2023

Diesel (C10-C28)	984	50.0	mg/kg	1000		98.4	70-130			
Residual Range Organics (C28-C40)	1050	200	"	1000		105	70-130			
Surrogate: o-Terphenyl	46		"	49.8		93.2	50-150			

Origins Laboratory, Inc.



Jen Pellegrini For Jordan A. Bynon, Project Manager

The results in this report apply to the samples analyzed in accordance with the chain of custody document. This analytical report must be reproduced in its entirety.

Eagle Environmental Consulting, LLC
 8000 W 44th Ave
 Wheat Ridge CO 80033

Martin C Eckert III
 Project Number: [none]
 Project: Noble - Boulter #14-14G

Extractable Petroleum Hydrocarbons by 8015D - Quality Control
Origins Laboratory, Inc.

Analyte	Result	Reporting Limit	Units	Spike Level	Source Result	%REC	%REC Limits	RPD	RPD Limit	Notes
---------	--------	-----------------	-------	-------------	---------------	------	-------------	-----	-----------	-------

Batch B3I2802 - EPA 3550B

Matrix Spike (B3I2802-MS1)	Source: Y309632-01			Prepared: 09/28/2023 Analyzed: 10/02/2023						
Diesel (C10-C28)	964	50.0	mg/kg	1000	ND	96.4	70-130			
Residual Range Organics (C28-C40)	1030	200	"	1000	ND	103	70-130			
Surrogate: o-Terphenyl	41		"	49.8		83.2	50-150			

Origins Laboratory, Inc.



Jen Pellegrini For Jordan A. Bynon, Project Manager

The results in this report apply to the samples analyzed in accordance with the chain of custody document. This analytical report must be reproduced in its entirety.

Eagle Environmental Consulting, LLC
 8000 W 44th Ave
 Wheat Ridge CO 80033

Martin C Eckert III
 Project Number: [none]
 Project: Noble - Boulter #14-14G

Extractable Petroleum Hydrocarbons by 8015D - Quality Control
Origins Laboratory, Inc.

Analyte	Result	Reporting Limit	Units	Spike Level	Source Result	%REC	%REC Limits	RPD	RPD Limit	Notes
Batch B312802 - EPA 3550B										
Matrix Spike Dup (B312802-MSD1)					Source: Y309632-01					Prepared: 09/28/2023 Analyzed: 10/02/2023
Diesel (C10-C28)	965	50.0	mg/kg	1000	ND	96.5	70-130	0.149	35	
Residual Range Organics (C28-C40)	969	200	"	1000	ND	96.9	70-130	5.77	35	
Surrogate: o-Terphenyl	44		"	49.8		89.0	50-150			

Origins Laboratory, Inc.



Jen Pellegrini For Jordan A. Bynon, Project Manager

The results in this report apply to the samples analyzed in accordance with the chain of custody document. This analytical report must be reproduced in its entirety.

Eagle Environmental Consulting, LLC
 8000 W 44th Ave
 Wheat Ridge CO 80033

Martin C Eckert III
 Project Number: [none]
 Project: Noble - Boulter #14-14G

Extractable Petroleum Hydrocarbons by 8015D - Quality Control
Origins Laboratory, Inc.

Analyte	Result	Reporting Limit	Units	Spike Level	Source Result	%REC	%REC Limits	RPD	RPD Limit	Notes
---------	--------	-----------------	-------	-------------	---------------	------	-------------	-----	-----------	-------

Batch B312928 - EPA 5030 (soil)

Blank (B312928-BLK1)

Prepared: 09/29/2023 Analyzed: 10/01/2023

1,2,4-Trimethylbenzene	ND	0.00200	mg/kg							U
1,3,5-Trimethylbenzene	ND	0.00200	"							U
Benzene	ND	0.00200	"							U
Ethylbenzene	ND	0.00200	"							U
Naphthalene	ND	0.00380	"							U
Toluene	ND	0.00200	"							U
Xylenes, total	ND	0.00200	"							U
Gasoline Range Hydrocarbons	ND	0.200	"							U
Surrogate: 1,2-Dichloroethane-d4	0.13		"	0.125	107		70-130			
Surrogate: Toluene-d8	0.13		"	0.125	102		70-130			
Surrogate: 4-Bromofluorobenzene	0.12		"	0.125	99.0		70-130			

Origins Laboratory, Inc.



Jen Pellegrini For Jordan A. Bynon, Project Manager

The results in this report apply to the samples analyzed in accordance with the chain of custody document. This analytical report must be reproduced in its entirety.

Eagle Environmental Consulting, LLC
 8000 W 44th Ave
 Wheat Ridge CO 80033

Martin C Eckert III
 Project Number: [none]
 Project: Noble - Boulter #14-14G

Volatile Organic Compounds by GC/MS SW846 8260D - Quality Control
Origins Laboratory, Inc.

Analyte	Result	Reporting Limit	Units	Spike Level	Source Result	%REC	%REC Limits	RPD	RPD Limit	Notes
---------	--------	-----------------	-------	-------------	---------------	------	-------------	-----	-----------	-------

Batch B312928 - EPA 5030 (soil)

LCS (B312928-BS1)

Prepared: 09/29/2023 Analyzed: 10/01/2023

1,2,4-Trimethylbenzene	0.111	0.00200	mg/kg	0.100		111	70-130			
1,3,5-Trimethylbenzene	0.112	0.00200	"	0.100		112	70-130			
Benzene	0.106	0.00200	"	0.100		106	70-130			
Ethylbenzene	0.110	0.00200	"	0.100		110	70-130			
Naphthalene	0.103	0.00380	"	0.100		103	70-130			
Toluene	0.104	0.00200	"	0.100		104	70-130			
o-Xylene	0.112	0.00200	"	0.100		112	70-130			
m,p-Xylene	0.201	0.00400	"	0.200		100	70-130			
Surrogate: 1,2-Dichloroethane-d4	0.13		"	0.125		102	70-130			
Surrogate: Toluene-d8	0.12		"	0.125		99.4	70-130			
Surrogate: 4-Bromofluorobenzene	0.14		"	0.125		110	70-130			

Origins Laboratory, Inc.



Jen Pellegrini For Jordan A. Bynon, Project Manager

The results in this report apply to the samples analyzed in accordance with the chain of custody document. This analytical report must be reproduced in its entirety.

Eagle Environmental Consulting, LLC
 8000 W 44th Ave
 Wheat Ridge CO 80033

Martin C Eckert III
 Project Number: [none]
 Project: Noble - Boulter #14-14G

Volatile Organic Compounds by GC/MS SW846 8260D - Quality Control
Origins Laboratory, Inc.

Analyte	Result	Reporting Limit	Units	Spike Level	Source Result	%REC	%REC Limits	RPD	RPD Limit	Notes
---------	--------	-----------------	-------	-------------	---------------	------	-------------	-----	-----------	-------

Batch B3I2928 - EPA 5030 (soil)

Matrix Spike (B3I2928-MS1)	Source: Y309661-01			Prepared: 09/29/2023 Analyzed: 10/01/2023						
1,2,4-Trimethylbenzene	0.101	0.00200	mg/kg	0.100	ND	101	70-130			
1,3,5-Trimethylbenzene	0.100	0.00200	"	0.100	ND	100	70-130			
Benzene	0.0972	0.00200	"	0.100	ND	97.2	70-130			
Ethylbenzene	0.101	0.00200	"	0.100	ND	101	70-130			
Naphthalene	0.0947	0.00380	"	0.100	ND	94.7	70-130			
Toluene	0.0995	0.00200	"	0.100	ND	99.5	70-130			
o-Xylene	0.103	0.00200	"	0.100	ND	103	70-130			
m,p-Xylene	0.182	0.00400	"	0.200	ND	91.2	70-130			
Surrogate: 1,2-Dichloroethane-d4	0.13		"	0.125		108	70-130			
Surrogate: Toluene-d8	0.13		"	0.125		101	70-130			
Surrogate: 4-Bromofluorobenzene	0.14		"	0.125		109	70-130			

Origins Laboratory, Inc.



Jen Pellegrini For Jordan A. Bynon, Project Manager

The results in this report apply to the samples analyzed in accordance with the chain of custody document. This analytical report must be reproduced in its entirety.

Eagle Environmental Consulting, LLC
 8000 W 44th Ave
 Wheat Ridge CO 80033

Martin C Eckert III
 Project Number: [none]
 Project: Noble - Boulter #14-14G

Volatile Organic Compounds by GC/MS SW846 8260D - Quality Control
Origins Laboratory, Inc.

Analyte	Result	Reporting Limit	Units	Spike Level	Source Result	%REC	%REC Limits	RPD	RPD Limit	Notes
---------	--------	-----------------	-------	-------------	---------------	------	-------------	-----	-----------	-------

Batch B312928 - EPA 5030 (soil)

Matrix Spike Dup (B312928-MSD1)	Source: Y309661-01			Prepared: 09/29/2023 Analyzed: 10/01/2023						
1,2,4-Trimethylbenzene	0.110	0.00200	mg/kg	0.100	ND	110	70-130	8.08	20	
1,3,5-Trimethylbenzene	0.109	0.00200	"	0.100	ND	109	70-130	7.73	20	
Benzene	0.104	0.00200	"	0.100	ND	104	70-130	6.86	20	
Ethylbenzene	0.109	0.00200	"	0.100	ND	109	70-130	7.42	20	
Naphthalene	0.104	0.00380	"	0.100	ND	104	70-130	9.30	20	
Toluene	0.106	0.00200	"	0.100	ND	106	70-130	6.03	20	
o-Xylene	0.112	0.00200	"	0.100	ND	112	70-130	8.52	20	
m,p-Xylene	0.198	0.00400	"	0.200	ND	99.2	70-130	8.31	20	
Surrogate: 1,2-Dichloroethane-d4	0.13		"	0.125		106	70-130			
Surrogate: Toluene-d8	0.13		"	0.125		101	70-130			
Surrogate: 4-Bromofluorobenzene	0.14		"	0.125		109	70-130			

Origins Laboratory, Inc.



Jen Pellegrini For Jordan A. Bynon, Project Manager

The results in this report apply to the samples analyzed in accordance with the chain of custody document. This analytical report must be reproduced in its entirety.

Eagle Environmental Consulting, LLC
 8000 W 44th Ave
 Wheat Ridge CO 80033

Martin C Eckert III
 Project Number: [none]
 Project: Noble - Boulder #14-14G

Volatile Organic Compounds by GC/MS SW846 8260D - Quality Control
Origins Laboratory, Inc.

Analyte	Result	Reporting Limit	Units	Spike Level	Source Result	%REC	%REC Limits	RPD	RPD Limit	Notes
---------	--------	-----------------	-------	-------------	---------------	------	-------------	-----	-----------	-------

Metals by EPA 6000/7000 Series Methods - Quality Control
Origins Laboratory, Inc.

Analyte	Result	Reporting Limit	Units	Spike Level	Source Result	%REC	%REC Limits	RPD	RPD Limit	Notes
---------	--------	-----------------	-------	-------------	---------------	------	-------------	-----	-----------	-------

Batch B3J1018 - EPA 3050B

Blank (B3J1018-BLK1)

Prepared: 10/10/2023 Analyzed: 10/13/2023

Arsenic	ND	0.000100	mg/kg							U
Barium	ND	0.0100	"							U
Cadmium	ND	0.000100	"							U
Copper	ND	0.0100	"							U
Lead	ND	0.0100	"							U
Nickel	ND	0.0100	"							U
Selenium	ND	0.000100	"							U
Silver	ND	0.000100	"							U
Zinc	ND	0.100	"							U

LCS (B3J1018-BS1)

Prepared: 10/10/2023 Analyzed: 10/13/2023

Arsenic	0.0452	0.000100	mg/kg	0.0500		90.4	80-120			
Barium	5.02	0.0100	"	5.00		100	80-120			
Cadmium	0.0508	0.000100	"	0.0500		102	80-120			
Copper	0.538	0.0100	"	0.500		108	80-120			
Lead	0.0494	0.0100	"	0.0500		98.8	80-120			
Nickel	0.0498	0.0100	"	0.0500		99.6	80-120			
Selenium	0.0498	0.000100	"	0.0500		99.6	80-120			
Silver	0.0516	0.000100	"	0.0500		103	80-120			
Zinc	0.508	0.100	"	0.500		102	80-120			

Matrix Spike (B3J1018-MS1)

Source: Y310254-01

Prepared: 10/10/2023 Analyzed: 10/13/2023

Origins Laboratory, Inc.



Jen Pellegrini For Jordan A. Bynon, Project Manager

The results in this report apply to the samples analyzed in accordance with the chain of custody document. This analytical report must be reproduced in its entirety.

Eagle Environmental Consulting, LLC
 8000 W 44th Ave
 Wheat Ridge CO 80033

Martin C Eckert III
 Project Number: [none]
 Project: Noble - Boulder #14-14G

Metals by EPA 6000/7000 Series Methods - Quality Control
Origins Laboratory, Inc.

Analyte	Result	Reporting Limit	Units	Spike Level	Source Result	%REC	%REC Limits	RPD	RPD Limit	Notes
---------	--------	-----------------	-------	-------------	---------------	------	-------------	-----	-----------	-------

Batch B3J1018 - EPA 3050B

Matrix Spike (B3J1018-MS1)		Source: Y310254-01			Prepared: 10/10/2023 Analyzed: 10/13/2023					
Arsenic	5.64	0.0927	mg/kg	4.64	1.20	95.7	75-125			
Barium	495	9.27	"	464	57.3	94.5	75-125			
Cadmium	4.69	0.0927	"	4.64	0.0466	100	75-125			
Copper	52.7	9.27	"	46.4	3.08	107	75-125			
Lead	7.24	9.27	"	4.64	11.0	NR	75-125			QM-07, U
Nickel	6.57	9.27	"	4.64	2.56	86.4	75-125			U
Selenium	4.61	0.0927	"	4.64	ND	99.4	75-125			
Silver	4.67	0.0927	"	4.64	0.00373	101	75-125			
Zinc	59.0	92.7	"	46.4	13.5	98.2	75-125			U
Matrix Spike Dup (B3J1018-MSD1)		Source: Y310254-01			Prepared: 10/10/2023 Analyzed: 10/13/2023					
Arsenic	5.44	0.0935	mg/kg	4.67	1.20	90.7	75-125	3.61	20	
Barium	471	9.35	"	467	57.3	88.5	75-125	5.04	20	
Cadmium	4.42	0.0935	"	4.67	0.0466	93.5	75-125	6.05	20	
Copper	50.0	9.35	"	46.7	3.08	100	75-125	5.12	20	
Lead	12.0	9.35	"	4.67	11.0	20.0	75-125	49.2	20	QM-07
Nickel	6.55	9.35	"	4.67	2.56	85.3	75-125	0.297	20	U
Selenium	4.35	0.0935	"	4.67	ND	93.1	75-125	5.79	20	
Silver	4.43	0.0935	"	4.67	0.00373	94.6	75-125	5.36	20	
Zinc	57.9	93.5	"	46.7	13.5	95.2	75-125	1.85	20	U

Origins Laboratory, Inc.



Jen Pellegrini For Jordan A. Bynon, Project Manager

The results in this report apply to the samples analyzed in accordance with the chain of custody document. This analytical report must be reproduced in its entirety.

Eagle Environmental Consulting, LLC
 8000 W 44th Ave
 Wheat Ridge CO 80033

Martin C Eckert III
 Project Number: [none]
 Project: Noble - Boulder #14-14G

Classical Chemistry Parameters - Quality Control
Origins Laboratory, Inc.

Analyte	Result	Reporting Limit	Units	Spike Level	Source Result	%REC	%REC Limits	RPD	RPD Limit	Notes
---------	--------	-----------------	-------	-------------	---------------	------	-------------	-----	-----------	-------

Batch B3J0206 - Saturated Paste Metals

Blank (B3J0206-BLK1)

Prepared: 10/02/2023 Analyzed: 10/04/2023

Calcium PPM	ND	10.0	mg/L							U
SAR	ND	0.0100	SAR							U
Magnesium PPM	ND	10.0	mg/L							U
Sodium PPM	ND	10.0	"							U

Duplicate (B3J0206-DUP1)

Source: Y309678-19

Prepared: 10/02/2023 Analyzed: 10/04/2023

Calcium PPM	117	10.0	mg/L		113			3.34	50	
SAR	ND	0.0100	SAR		1.53				200	U
Magnesium PPM	49.9	10.0	mg/L		48.5			2.86	50	
Sodium PPM	74.8	10.0	"		77.3			3.28	50	

Batch B3J0308 - DTPA Sorbitol Preparation

Blank (B3J0308-BLK1)

Prepared: 10/03/2023 Analyzed: 10/04/2023

Boron	ND	0.100	mg/L							U
-------	----	-------	------	--	--	--	--	--	--	---

Duplicate (B3J0308-DUP1)

Source: Y309685-02

Prepared: 10/03/2023 Analyzed: 10/04/2023

Boron	0.382	0.0999	mg/L		0.319			18.1	50	
-------	-------	--------	------	--	-------	--	--	------	----	--

Origins Laboratory, Inc.



Jen Pellegrini For Jordan A. Bynon, Project Manager

The results in this report apply to the samples analyzed in accordance with the chain of custody document. This analytical report must be reproduced in its entirety.

Eagle Environmental Consulting, LLC
 8000 W 44th Ave
 Wheat Ridge CO 80033

Martin C Eckert III
 Project Number: [none]
 Project: Noble - Boulder #14-14G

Saturated Paste - Quality Control
Origins Laboratory, Inc.

Analyte	Result	Reporting Limit	Units	Spike Level	Source Result	%REC	%REC Limits	RPD	RPD Limit	Notes
Batch B3J0213 - Saturated Paste pH/EC										
Blank (B3J0213-BLK1)					Prepared: 10/02/2023 Analyzed: 10/03/2023					
Specific Conductance (EC)	ND	0.00500	mmhos/cm							U
Duplicate (B3J0213-DUP1)		Source: Y309678-19			Prepared: 10/02/2023 Analyzed: 10/03/2023					
pH	7.91		pH Units		8.00			1.13	25	
Specific Conductance (EC)	1.48	0.00500	mmhos/cm		1.41			5.08	25	

Origins Laboratory, Inc.



Jen Pellegrini For Jordan A. Bynon, Project Manager

The results in this report apply to the samples analyzed in accordance with the chain of custody document. This analytical report must be reproduced in its entirety.

Eagle Environmental Consulting, LLC
 8000 W 44th Ave
 Wheat Ridge CO 80033

Martin C Eckert III
 Project Number: [none]
 Project: Noble - Boulder #14-14G

**Total Metals by 7196A - Quality Control
 Waypoint Analytical, LLC.**

Analyte	Result	Reporting Limit	Units	Spike Level	Source Result	%REC	%REC Limits	RPD	RPD Limit	Notes
Batch L713313 -										
DUP (L 97101-DUP)		Source: 97101			Prepared: Analyzed: 10/26/2023					
Chromium, Hexavalent	ND	0.5	mg/Kg		<0.500		-	0	20	
MS (L 97101-MS)		Source: 97101			Prepared: Analyzed: 10/26/2023					
Chromium, Hexavalent	32.1	2.5	mg/Kg	39.4	<1.22	81	75-125			
LCS (LCS)		Prepared: Analyzed: 10/26/2023								
Chromium, Hexavalent	7.13	0.5	mg/Kg	8		89	75-125			
LRB (LRB)		Prepared: Analyzed: 10/26/2023								
Chromium, Hexavalent	ND	0.5	mg/Kg				-			

Origins Laboratory, Inc.



Jen Pellegrini For Jordan A. Bynon, Project Manager

The results in this report apply to the samples analyzed in accordance with the chain of custody document. This analytical report must be reproduced in its entirety.

Eagle Environmental Consulting, LLC
 8000 W 44th Ave
 Wheat Ridge CO 80033

Martin C Eckert III
 Project Number: [none]
 Project: Noble - Boulter #14-14G

PAH by 8270D SIM - Quality Control
Waypoint Analytical, LLC.

Analyte	Result	Reporting Limit	Units	Spike Level	Source Result	%REC	%REC Limits	RPD	RPD Limit	Notes
---------	--------	-----------------	-------	-------------	---------------	------	-------------	-----	-----------	-------

Batch L707994 - 3550B

MSD (L 84181-MSD-L707994)	Source: 84181			Prepared: 10/02/2023 Analyzed: 10/03/2023						
Fluoranthene	0.0917	0.00067	mg/Kg	0.163	<0.000394	56.2	30-130	8.4	30	
Benzo(a)pyrene	0.0913	0.00067	"	0.163	<0.000468	56	30-130	10	30	
Pyrene	0.0899	0.00067	"	0.163	<0.000643	55.1	30-130	5.4	30	
1-Methylnaphthalene	0.0821	0.00201	"	0.163	<0.00109	50.3	30-130	10.3	30	
Fluorene	0.0889	0.00067	"	0.163	<0.000286	54.5	30-130	9.4	30	
Benzo(b)fluoranthene	0.0774	0.00067	"	0.163	<0.000585	47.4	30-130	22.8	30	
Dibenz(a,h)anthracene	0.121	0.00067	"	0.163	<0.000614	74.2	30-130	18	30	
Benzo(k)fluoranthene	0.0726	0.00067	"	0.163	<0.000437	44.5	30-130	9.2	30	
2-Methylnaphthalene	0.0825	0.00201	"	0.163	<0.00194	50.6	30-130	9.7	30	
Acenaphthene	0.0857	0.00067	"	0.163	<0.000304	52.5	30-130	9.8	30	
Chrysene	0.091	0.00067	"	0.163	<0.000624	55.8	30-130	9.4	30	
Benzo(a)anthracene	0.0912	0.00067	"	0.163	<0.000493	55.9	30-130	8.5	30	
Indeno(1,2,3-cd)pyrene	0.116	0.00067	"	0.163	<0.000627	71.1	30-130	20.5	30	
Anthracene	0.0857	0.00067	"	0.163	<0.000334	52.5	30-130	11.4	30	
<i>Surrogate: Nitrobenzene-d5</i>	42.5		"	0.327	139	42.5	29-110			
<i>Surrogate: 2-Fluorobiphenyl</i>	47		"	0.327	151	47	33-115			
<i>Surrogate: 4-Terphenyl-d14</i>	50.7		"	0.327	164	50.7	33-122			

MS (L 84181-MS-L707994)	Source: 84181			Prepared: 10/02/2023 Analyzed: 10/03/2023						
2-Methylnaphthalene	0.091	0.00201	mg/Kg	0.167	<0.00194	54.4	30-130			
Chrysene	0.1	0.00067	"	0.167	<0.000624	59.8	30-130			
Dibenz(a,h)anthracene	0.101	0.00067	"	0.167	<0.000614	60.4	30-130			
Fluoranthene	0.0998	0.00067	"	0.167	<0.000394	59.7	30-130			
Pyrene	0.0949	0.00067	"	0.167	<0.000643	56.8	30-130			
Fluorene	0.0977	0.00067	"	0.167	<0.000286	58.5	30-130			
Benzo(k)fluoranthene	0.0662	0.00067	"	0.167	<0.000437	39.6	30-130			
Indeno(1,2,3-cd)pyrene	0.0944	0.00067	"	0.167	<0.000627	56.5	30-130			

Origins Laboratory, Inc.



Jen Pellegrini For Jordan A. Bynon, Project Manager

The results in this report apply to the samples analyzed in accordance with the chain of custody document. This analytical report must be reproduced in its entirety.

Eagle Environmental Consulting, LLC
 8000 W 44th Ave
 Wheat Ridge CO 80033

Martin C Eckert III
 Project Number: [none]
 Project: Noble - Boulter #14-14G

PAH by 8270D SIM - Quality Control
Waypoint Analytical, LLC.

Analyte	Result	Reporting Limit	Units	Spike Level	Source Result	%REC	%REC Limits	RPD	RPD Limit	Notes
---------	--------	-----------------	-------	-------------	---------------	------	-------------	-----	-----------	-------

Batch L707994 - 3550B

MS (L 84181-MS-L707994)	Source: 84181			Prepared: 10/02/2023 Analyzed: 10/03/2023						
Acenaphthene	0.0946	0.00067	mg/Kg	0.167	<0.000304	56.6	30-130			
Benzo(a)pyrene	0.101	0.00067	"	0.167	<0.000468	60.4	30-130			
Benzo(a)anthracene	0.0993	0.00067	"	0.167	<0.000493	59.4	30-130			
Anthracene	0.0961	0.00067	"	0.167	<0.000334	57.5	30-130			
1-Methylnaphthalene	0.0911	0.00201	"	0.167	<0.00109	54.5	30-130			
Benzo(b)fluoranthene	0.0615	0.00067	"	0.167	<0.000585	36.8	30-130			
Surrogate: Nitrobenzene-d5	42		"	0.333	139	42	29-110			
Surrogate: 4-Terphenyl-d14	50.4		"	0.333	164	50.4	33-122			
Surrogate: 2-Fluorobiphenyl	47.7		"	0.333	151	47.7	33-115			

LCS (LCS-L707994)				Prepared: 10/02/2023 Analyzed: 10/03/2023						
Benzo(k)fluoranthene	0.081	0.00067	mg/Kg	0.167		48.5	30-130			
Chrysene	0.117	0.00067	"	0.167		70	30-130			
Dibenz(a,h)anthracene	0.127	0.00067	"	0.167		76	30-130			
Fluorene	0.11	0.00067	"	0.167		65.8	30-130			
Benzo(b)fluoranthene	0.0896	0.00067	"	0.167		53.6	30-130			
Pyrene	0.11	0.00067	"	0.167		65.8	30-130			
Fluoranthene	0.113	0.00067	"	0.167		67.6	30-130			
1-Methylnaphthalene	0.103	0.00201	"	0.167		61.6	30-130			
Benzo(a)anthracene	0.114	0.00067	"	0.167		68.2	30-130			
Anthracene	0.109	0.00067	"	0.167		65.2	30-130			
Acenaphthene	0.107	0.00067	"	0.167		64	30-130			
2-Methylnaphthalene	0.103	0.00201	"	0.167		61.6	30-130			
Indeno(1,2,3-cd)pyrene	0.122	0.00067	"	0.167		73	30-130			
Benzo(a)pyrene	0.116	0.00067	"	0.167		69.4	30-130			
Surrogate: Nitrobenzene-d5	50.7		"	0.333		50.7	29-110			
Surrogate: 4-Terphenyl-d14	60.3		"	0.333		60.3	33-122			

Origins Laboratory, Inc.



Jen Pellegrini For Jordan A. Bynon, Project Manager

The results in this report apply to the samples analyzed in accordance with the chain of custody document. This analytical report must be reproduced in its entirety.

Eagle Environmental Consulting, LLC
 8000 W 44th Ave
 Wheat Ridge CO 80033

Martin C Eckert III
 Project Number: [none]
 Project: Noble - Boulter #14-14G

PAH by 8270D SIM - Quality Control
Waypoint Analytical, LLC.

Analyte	Result	Reporting Limit	Units	Spike Level	Source Result	%REC	%REC Limits	RPD	RPD Limit	Notes
Batch L707994 - 3550B										
LCS (LCS-L707994)					Prepared: 10/02/2023 Analyzed: 10/03/2023					
Surrogate: 2-Fluorobiphenyl	56.7		mg/Kg	0.333		56.7	33-115			
LRB (LRB-L707994)					Prepared: 10/02/2023 Analyzed: 10/03/2023					
Chrysene	ND	0.00067	mg/Kg				-			
Dibenz(a,h)anthracene	ND	0.00067	"				-			
Fluoranthene	ND	0.00067	"				-			
Fluorene	ND	0.00067	"				-			
Benzo(k)fluoranthene	ND	0.00067	"				-			
Indeno(1,2,3-cd)pyrene	ND	0.00067	"				-			
Benzo(b)fluoranthene	ND	0.00067	"				-			
Benzo(a)pyrene	ND	0.00067	"				-			
Benzo(a)anthracene	ND	0.00067	"				-			
Acenaphthene	ND	0.00067	"				-			
2-Methylnaphthalene	ND	0.00201	"				-			
1-Methylnaphthalene	ND	0.00201	"				-			
Pyrene	ND	0.00067	"				-			
Anthracene	ND	0.00067	"				-			
Surrogate: Nitrobenzene-d5	48.6		"	0.333		48.6	29-110			
Surrogate: 4-Terphenyl-d14	56.7		"	0.333		56.7	33-122			
Surrogate: 2-Fluorobiphenyl	51.9		"	0.333		51.9	33-115			

Origins Laboratory, Inc.



Jen Pellegrini For Jordan A. Bynon, Project Manager

The results in this report apply to the samples analyzed in accordance with the chain of custody document. This analytical report must be reproduced in its entirety.

Eagle Environmental Consulting, LLC
8000 W 44th Ave
Wheat Ridge CO 80033

Martin C Eckert III
Project Number: [none]
Project: Noble - Boulter #14-14G

Notes and Definitions

- U Sample is Non-Detect.

 - S-GC Surrogate recovery outside of control limits. The data was accepted based on valid recovery of the remaining surrogate.

 - QM-07 The spike recovery was outside acceptance limits for the MS and/or MSD. The batch was accepted based on acceptable LCS recovery.

 - J Estimated Value. Analyte below reported quantitation limit.

 - ND Analyte NOT DETECTED at or above the reporting limit

 - RPD Relative Percent Difference
- All soil results are reported on a wet weight basis.

Origins Laboratory, Inc.



Jen Pellegrini For Jordan A. Bynon, Project Manager

The results in this report apply to the samples analyzed in accordance with the chain of custody document. This analytical report must be reproduced in its entirety.



October 24, 2023

Eagle Environmental Consulting, LLC

Andrew Newberry

8000 W 44th Ave

Wheat Ridge CO 80033

Project Name - Noble - Boulter #14-14G

Project Number - [none]

Attached are your analytical results for Noble - Boulter #14-14G received by Origins Laboratory, Inc. October 12, 2023. This project is associated with Origins project number Y310387-01.

The analytical results in the following report were analyzed under the guidelines of EPA Methods. These methods are identified as follows; "SW" are defined in SW-846, "EPA" are defined in 40CFR part 136 and "SM" are defined in the most current revision of Standard Methods For the Examination of Water and Wastewater.

The analytical results apply specifically to the samples and analyses specified per the attached Chain of Custody. As such, this report shall not be reproduced except in full, without the written approval of Origin's laboratory.

Unless otherwise noted, the analytical results for all soil samples are reported on a wet weight basis. All analytical analyses were performed under NELAP guidelines unless noted by a data qualifier.

Any holding time exceedances, deviations from the method specifications or deviations from Origins Laboratory's Standard Operating Procedures are outlined in the case narrative.

Thank you for selecting Origins for your analytical needs. Please contact us with any questions concerning this report, or if we can help with anything at all.

Origins Laboratory, Inc.
303.433.1322
o-squad@oelabinc.com



1725 Elk Place, Denver, CO 80211 | Phone: 303.433.1322 | Fax: 303.265.9645

Eagle Environmental Consulting, LLC
8000 W 44th Ave
Wheat Ridge CO 80033

Andrew Newberry
Project Number: [none]
Project: Noble - Boulter #14-14G

CROSS REFERENCE REPORT

Sample ID	Laboratory ID	Matrix	Date Sampled	Date Received
Background-01@3'	Y310387-01	Soil	September 27, 2023 14:40	10/12/2023 16:35

Chain of Custody Modification Request

On 10/13/2023, Grace Congdon from Eagle Environmental contacted Jennifer Pellegrini via email regarding Y310387 requesting that pH, SAR, and the 6020 915 metals be run on the sample.

Requested modifications to the chain of custody were made by Jennifer Pellegrini on 10/13/2023.

Origins Laboratory, Inc.



The results in this report apply to the samples analyzed in accordance with the chain of custody document. This analytical report must be reproduced in its entirety.

Eagle Environmental Consulting, LLC
 8000 W 44th Ave
 Wheat Ridge CO 80033

Andrew Newberry
 Project Number: [none]
 Project: Noble - Boulder #14-14G

Origins Laboratory

F-012207-01-R1
 Effective Date: 01/09/12

Sample Receipt Checklist

Origins Work Order: 1310387 Client: Eagle
 Client Project ID: Bowler #14-14 G
 Checklist Completed by: EHS/JG Shipped Via: HO
 Date/time completed: 10/12/23 (UPS, FedEx, Hand Delivered, Pick-up, etc.)
 Airbill #: N/A
 Matrix(s) Received: (Check all that apply): Soil/Solid Water Other: _____
 Cooler Number/Temperature: 1 14.2 °C / _____ °C / _____ °C (Describe)
 Thermometer ID: 7004

Requirement Description	Yes	No	N/A	Comments (if any)
If samples require cooling, was the temperature between 0°C to ≤ 6°C ⁽¹⁾ ?	<input checked="" type="checkbox"/>			
Is there ice present (document if blue ice is used)	<input checked="" type="checkbox"/>			
Are custody seals present on cooler? (if so, document in comments if they are signed and dated, broken or intact)		<input checked="" type="checkbox"/>		
Are custody seals present on each sample container? (if so, document in comments if they are signed and dated, broken or intact)		<input checked="" type="checkbox"/>		
Were all samples received intact ⁽¹⁾ ?	<input checked="" type="checkbox"/>			
Was adequate sample volume provided ⁽¹⁾ ?	<input checked="" type="checkbox"/>			
Are short holding time analytes or samples with HTs due within 48 hours present ⁽¹⁾ ?		<input checked="" type="checkbox"/>		
Is a chain-of-custody (COC) present and filled out completely ⁽¹⁾ ?		<input checked="" type="checkbox"/>		no analysis listed
Does the COC agree with the number and type of sample bottles received ⁽¹⁾ ?	<input checked="" type="checkbox"/>			
Do the sample IDs on the bottle labels match the COC ⁽¹⁾ ?	<input checked="" type="checkbox"/>			
Is the COC properly relinquished by the client with date and time recorded ⁽¹⁾ ?	<input checked="" type="checkbox"/>			
For volatiles in water – is there headspace (> ¼ inch bubble) present? If yes, contact client and note in narrative.			<input checked="" type="checkbox"/>	
Are samples preserved that require preservation and was it checked ⁽¹⁾ ? (note ID of confirmation instrument used in comments) / (preservation is not confirmed for subcontracted analyses in order to insure sample integrity)/(pH <2 for samples preserved with HNO ₃ , HCL, H ₂ SO ₄) / (pH >10 for samples preserved with NaAsO ₂ +NaOH, ZnAc+NaOH)			<input checked="" type="checkbox"/>	
Additional Comments (if any):				

⁽¹⁾If NO, then contact the client before proceeding with analysis and note date, time and person contacted as well as the corrective action to in the additional comments (above) and the case narrative.

Reviewed by (Project Manager) [Signature] Date/Time Reviewed 10/16/23

Origins Laboratory, Inc.
[Signature]

The results in this report apply to the samples analyzed in accordance with the chain of custody document. This analytical report must be reproduced in its entirety.

Eagle Environmental Consulting, LLC
 8000 W 44th Ave
 Wheat Ridge CO 80033

Andrew Newberry
 Project Number: [none]
 Project: Noble - Boulder #14-14G

Background-01@3'
9/27/2023 2:40:00PM

Analyte	Result	Reporting Limit	Units	Dilution	Batch	Analyst	Prepared	Analyzed	Notes
---------	--------	-----------------	-------	----------	-------	---------	----------	----------	-------

Origins Laboratory, Inc.
Y310387-01 (Soil)

Metals by Saturated Paste by EPA 6010

Calcium	1.53	0.499	meq/L	10	[CALC]	KAP	10/17/2023	10/18/2023
Magnesium	5.15	0.823	"	"	"	KAP	"	"
Sodium	24.1	0.435	"	"	"	KAP	"	"

pH in Soil by 9045D

pH	8.52		pH Units	1	B3J1715	HJD	10/17/2023	10/18/2023
----	------	--	----------	---	---------	-----	------------	------------

SAR by 20B Saturated Paste

SAR	13.2	0.0100	SAR	1	B3J1709	KAP	10/17/2023	10/18/2023
-----	------	--------	-----	---	---------	-----	------------	------------

Table 915 metals by EPA 6020B

Arsenic	4.19	0.0893	mg/kg	10	B3J1317	CIH	10/13/2023	10/19/2023
Barium	69.6	8.93	"	"	"	CIH	"	"
Cadmium	ND	0.0893	"	"	"	CIH	"	"
Copper	ND	8.93	"	"	"	CIH	"	"
Lead	ND	8.93	"	"	"	CIH	"	"
Nickel	ND	8.93	"	"	"	CIH	"	"
Selenium	0.258	0.0893	"	"	"	CIH	"	"
Silver	ND	0.0893	"	"	"	CIH	"	"
Zinc	ND	89.3	"	"	"	CIH	"	"

Origins Laboratory, Inc.



The results in this report apply to the samples analyzed in accordance with the chain of custody document. This analytical report must be reproduced in its entirety.

Eagle Environmental Consulting, LLC
 8000 W 44th Ave
 Wheat Ridge CO 80033

Andrew Newberry
 Project Number: [none]
 Project: Noble - Boulder #14-14G

Metals by EPA 6000/7000 Series Methods - Quality Control
Origins Laboratory, Inc.

Analyte	Result	Reporting Limit	Units	Spike Level	Source Result	%REC	%REC Limits	RPD	RPD Limit	Notes
---------	--------	-----------------	-------	-------------	---------------	------	-------------	-----	-----------	-------

Batch B3J1317 - EPA 3050B

Blank (B3J1317-BLK1)

Prepared: 10/13/2023 Analyzed: 10/17/2023

Arsenic	ND	0.000100	mg/kg							
Barium	ND	0.0100	"							
Cadmium	ND	0.000100	"							
Copper	ND	0.0100	"							
Lead	ND	0.0100	"							
Nickel	ND	0.0100	"							
Selenium	ND	0.000100	"							
Silver	ND	0.000100	"							
Zinc	ND	0.100	"							

LCS (B3J1317-BS1)

Prepared: 10/13/2023 Analyzed: 10/17/2023

Arsenic	0.0460	0.000100	mg/kg	0.0500		91.9	80-120			
Barium	4.88	0.0100	"	5.00		97.7	80-120			
Cadmium	0.0493	0.000100	"	0.0500		98.5	80-120			
Copper	0.494	0.0100	"	0.500		98.7	80-120			
Lead	0.0496	0.0100	"	0.0500		99.3	80-120			
Nickel	0.0491	0.0100	"	0.0500		98.2	80-120			
Selenium	0.0496	0.000100	"	0.0500		99.3	80-120			
Silver	0.0448	0.000100	"	0.0500		89.6	80-120			
Zinc	0.457	0.100	"	0.500		91.4	80-120			

Matrix Spike (B3J1317-MS1)

Source: Y310328-04

Prepared: 10/13/2023 Analyzed: 10/17/2023

Arsenic	6.67	0.0875	mg/kg	4.38	1.82	111	75-125			
Barium	538	8.75	"	438	68.5	107	75-125			
Cadmium	4.87	0.0875	"	4.38	0.0592	110	75-125			
Copper	49.8	8.75	"	43.8	6.02	99.9	75-125			
Lead	10.5	8.75	"	4.38	6.27	95.8	75-125			

Origins Laboratory, Inc.



The results in this report apply to the samples analyzed in accordance with the chain of custody document. This analytical report must be reproduced in its entirety.

Eagle Environmental Consulting, LLC
 8000 W 44th Ave
 Wheat Ridge CO 80033

Andrew Newberry
 Project Number: [none]
 Project: Noble - Boulder #14-14G

Metals by EPA 6000/7000 Series Methods - Quality Control
Origins Laboratory, Inc.

Analyte	Result	Reporting Limit	Units	Spike Level	Source Result	%REC	%REC Limits	RPD	RPD Limit	Notes
---------	--------	-----------------	-------	-------------	---------------	------	-------------	-----	-----------	-------

Batch B3J1317 - EPA 3050B

Matrix Spike (B3J1317-MS1)

Source: Y310328-04

Prepared: 10/13/2023 Analyzed: 10/17/2023

Nickel	8.84	8.75	mg/kg	4.38	4.65	95.8	75-125			
Selenium	4.81	0.0875	"	4.38	0.0775	108	75-125			
Silver	4.41	0.0875	"	4.38	0.0200	100	75-125			
Zinc	77.4	87.5	"	43.8	27.8	113	75-125			

Matrix Spike Dup (B3J1317-MSD1)

Source: Y310328-04

Prepared: 10/13/2023 Analyzed: 10/17/2023

Arsenic	6.44	0.0898	mg/kg	4.49	1.82	103	75-125	3.54	20	
Barium	554	8.98	"	449	68.5	108	75-125	2.95	20	
Cadmium	4.85	0.0898	"	4.49	0.0592	107	75-125	0.347	20	
Copper	49.1	8.98	"	44.9	6.02	96.1	75-125	1.26	20	
Lead	10.3	8.98	"	4.49	6.27	90.0	75-125	1.45	20	
Nickel	8.69	8.98	"	4.49	4.65	90.1	75-125	1.68	20	
Selenium	4.59	0.0898	"	4.49	0.0775	101	75-125	4.61	20	
Silver	4.43	0.0898	"	4.49	0.0200	98.2	75-125	0.331	20	
Zinc	76.2	89.8	"	44.9	27.8	108	75-125	1.57	20	

Origins Laboratory, Inc.



The results in this report apply to the samples analyzed in accordance with the chain of custody document. This analytical report must be reproduced in its entirety.

Eagle Environmental Consulting, LLC
 8000 W 44th Ave
 Wheat Ridge CO 80033

Andrew Newberry
 Project Number: [none]
 Project: Noble - Boulder #14-14G

Classical Chemistry Parameters - Quality Control
Origins Laboratory, Inc.

Analyte	Result	Reporting Limit	Units	Spike Level	Source Result	%REC	%REC Limits	RPD	RPD Limit	Notes
---------	--------	-----------------	-------	-------------	---------------	------	-------------	-----	-----------	-------

Batch B3J1709 - Saturated Paste Metals

Blank (B3J1709-BLK1)

Prepared: 10/17/2023 Analyzed: 10/18/2023

Calcium PPM	ND	10.0	mg/L							
SAR	ND	0.0100	SAR							
Magnesium PPM	ND	10.0	mg/L							
Sodium PPM	ND	10.0	"							

Duplicate (B3J1709-DUP1)

Source: Y310350-04

Prepared: 10/17/2023 Analyzed: 10/18/2023

Calcium PPM	49.5	10.0	mg/L		44.9			9.85	50	
SAR	ND	0.0100	SAR		2.71				200	
Magnesium PPM	13.5	10.0	mg/L		12.3			9.61	50	
Sodium PPM	70.4	10.0	"		79.5			12.1	50	

Origins Laboratory, Inc.



The results in this report apply to the samples analyzed in accordance with the chain of custody document. This analytical report must be reproduced in its entirety.

Eagle Environmental Consulting, LLC
 8000 W 44th Ave
 Wheat Ridge CO 80033

Andrew Newberry
 Project Number: [none]
 Project: Noble - Boulter #14-14G

Saturated Paste - Quality Control
Origins Laboratory, Inc.

Analyte	Result	Reporting Limit	Units	Spike Level	Source Result	%REC	%REC Limits	RPD	RPD Limit	Notes
---------	--------	-----------------	-------	-------------	---------------	------	-------------	-----	-----------	-------

Batch B3J1715 - Saturated Paste pH/EC

Duplicate (B3J1715-DUP1)		Source: Y310350-04			Prepared: 10/17/2023 Analyzed: 10/18/2023					
pH	8.21		pH Units		8.24			0.365	25	

Origins Laboratory, Inc.



The results in this report apply to the samples analyzed in accordance with the chain of custody document. This analytical report must be reproduced in its entirety.

Eagle Environmental Consulting, LLC
8000 W 44th Ave
Wheat Ridge CO 80033

Andrew Newberry
Project Number: [none]
Project: Noble - Boulter #14-14G

Notes and Definitions

ND Analyte NOT DETECTED at or above the reporting limit

RPD Relative Percent Difference

All soil results are reported at a wet weight basis.

Origins Laboratory, Inc.



The results in this report apply to the samples analyzed in accordance with the chain of custody document. This analytical report must be reproduced in its entirety.

Jordan A. Bynon, Project Manager