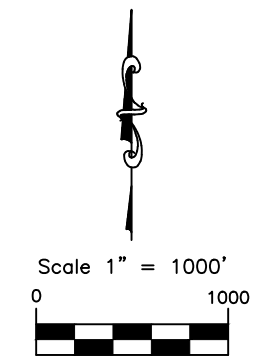
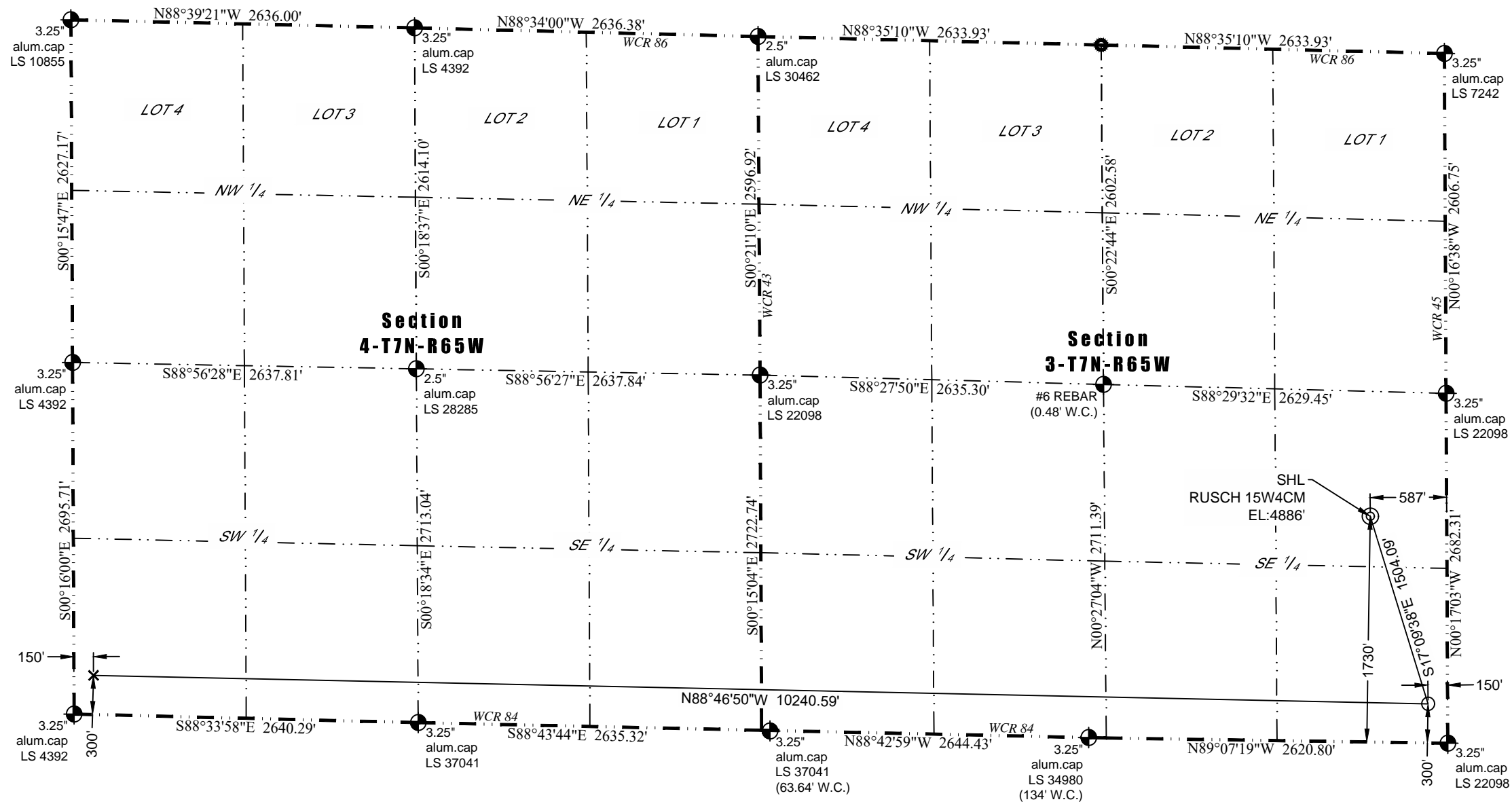


# WELL LOCATION CERTIFICATE

THIS MAP DOES NOT REPRESENT A BOUNDARY SURVEY



- LEGEND**
- - Found Survey Monument
  - ⊗ - Calculated Position
  - ⊙ - Surface Hole Location (SHL)
  - - Landing Point Location (LPL)
  - × - Bottom Hole Location (BHL)

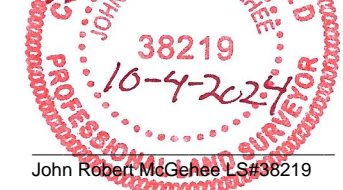
In accordance with a request from Venessa Chase of Prairie Operating LLC, JR Land Surveying LLC has determined the location of the **RUSCH 15W4CM** well site to be SHL: 1730' FSL and 587' FEL, (LPL: 300' FSL and 150' FEL, BHL: 300' FSL and 150' FWL), as measured at ninety (90) degrees from the section lines of Sections 3 and 4, Township 7 North, Range 65 West of the 6th Principal Meridian, Weld County Colorado.

<u>Proposed Surface Hole Data:</u>	<u>Proposed Landing Point Data:</u>	<u>Proposed Bottom Hole Data:</u>
Latitude: N40.600287°	Latitude: N40.596331°	Latitude: N40.597196°
Longitude: W104.641435°	Longitude: W104.639888°	Longitude: W104.676746°
PDOP: 1.4		

- Notes:**
- 1) Bearings and distances based on NAD 83 Colorado North State Plane Coordinate, using RTK GPS observations taken 11/7/2017 by operator Jason Dahlman.
  - 2) Conversion factor to ground (1.0002549504).
  - 3) Elevations based on NAVD 88 GPS heights and Geoid 2009 corrections.
  - 4) See Location Drawing for visible improvements within 500 feet of Pad Site.
  - 5) The surface use is a cultivated field.

**NOTICE:** According to Colorado law you must commence any legal action based upon any defect in this W.L.C. within three years after you first discover such defect. In no event may any action based upon any defect in this W.L.C. be commenced more than ten years from this said date of the certification shown hereon.

I hereby certify that this Well Location Certificate was prepared by me or under my direct supervision on 10/4/2024 for and on behalf of Prairie Operating LLC that it is not a Land Survey Plat or an Improvement Survey Plat and that it is not to be relied upon for establishment of fences, buildings, or other future improvement lines.



John Robert McGhee LS#38219