



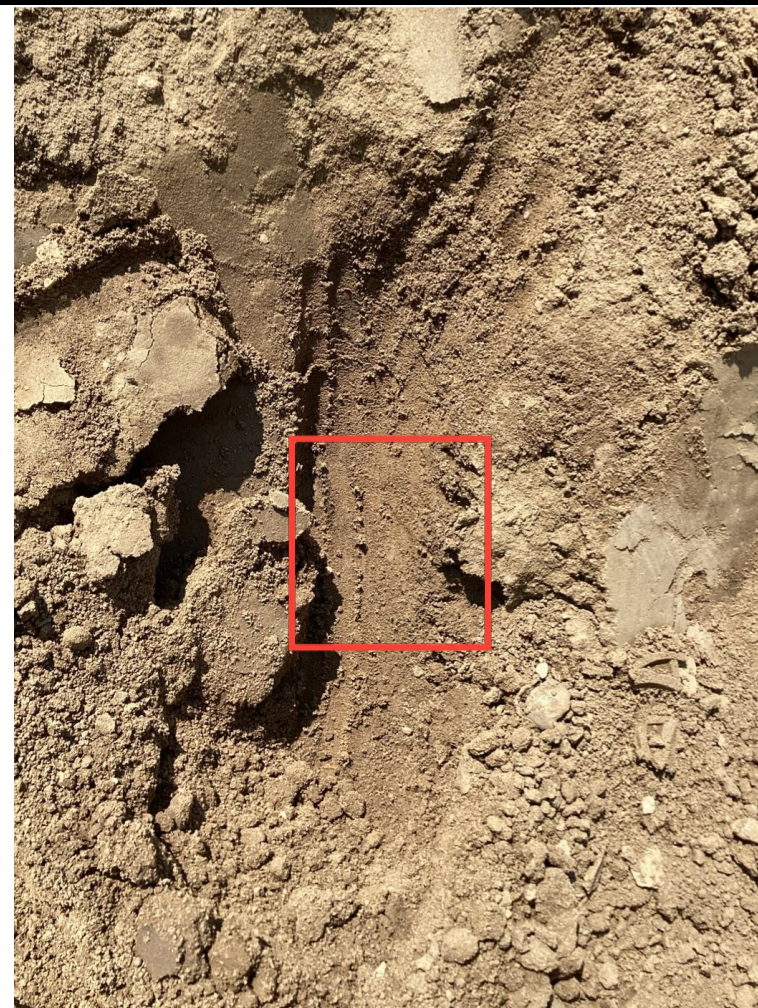


TANK BATTERY DECOMMISSIONING FORM

SITE NAME: GEHRING-64N64W 8SESE Tank Battery							DATE: 7/25/2024	REM. PROJECT #: 32629	WEATHER: SUNNY 100's		
SITE DIRECTIONS: CR 46 and 53, .2 mi W to site area							CLIENT: Noble				
LEGALS AND LAT/LONG: 40.319838, -104.568779							TASMAN PERSONNEL: MR, JM				
SOIL TYPES: Well Graded Sand - SW							SURFACE GRADIENT: East				
SOIL SAMPLING							FACILITY INFRASTRUCTURE				
Date/Time	Soil Sample ID	PID (ppm)	Visual	Olfactory	Photo?	Grab or Lab Sample?	EQUIPMENT		Quantity	Photo?	
							Above Ground Storage Tank (AST)				
7/25/2024 12:30	PWV01-N@2.5'	0.5	No Staining	No Odor	Yes	Grab	Buried or Partially Buried Vessel		2	✓	
7/25/2024 12:35	PWV01-E@2.5'	0.2	No Staining	No Odor	Yes	Grab	Separator		0		
7/25/2024 12:40	PWV01-S@2.5'	5.8	No Staining	No Odor	Yes	Lab	Emission Control Device (ECD)		0		
7/25/2024 12:45	PWV01-W@2.5'	0.7	No Staining	No Odor	Yes	Grab	Dump Line		0		
7/25/2024 12:50	PWV01-B@4'	1.2	No Staining	No Odor	Yes	Lab	Wellhead		0		
7/25/2024 12:55	PWV02-N@2.5'	0.9	No Staining	No Odor	Yes	Lab	Flowline		0		
7/25/2024 13:00	PWV02-E@2.5'	0.2	No Staining	No Odor	Yes	Grab	Other:				
7/25/2024 13:05	PWV02-S@2.5'	0.3	No Staining	No Odor	Yes	Grab	Soil Loads Removed				
7/25/2024 13:10	PWV02-W@2.5'	0.2	No Staining	No Odor	Yes	Grab	IMPACTED SOIL IDENTIFIED? Yes				
7/25/2024 13:15	PWV02-B@4'	0.5	No Staining	No Odor	Yes	Lab	ESTIMATED VOLUME OF IMPACTS: TBD				
							Date	Number	CY		
							Total Removed		0	0	
							Disposal Facility:				
							Groundwater Recovery				
							DATE GW ENCOUNTERED:			DEPTH:	
							GROUNDWATER IN CONTACT WITH IMPACTED SOIL?				
							LNAPL OR SHEEN OBSERVED ON GW?				
GROUNDWATER SAMPLING							Date	BBLs			
Date/Time	Groundwater Sample ID	Depth Collected	Turbid?	Sheen?	Odor?	Photo?					
							Total Removed		0		
							Disposal Facility:				



Photographic Log

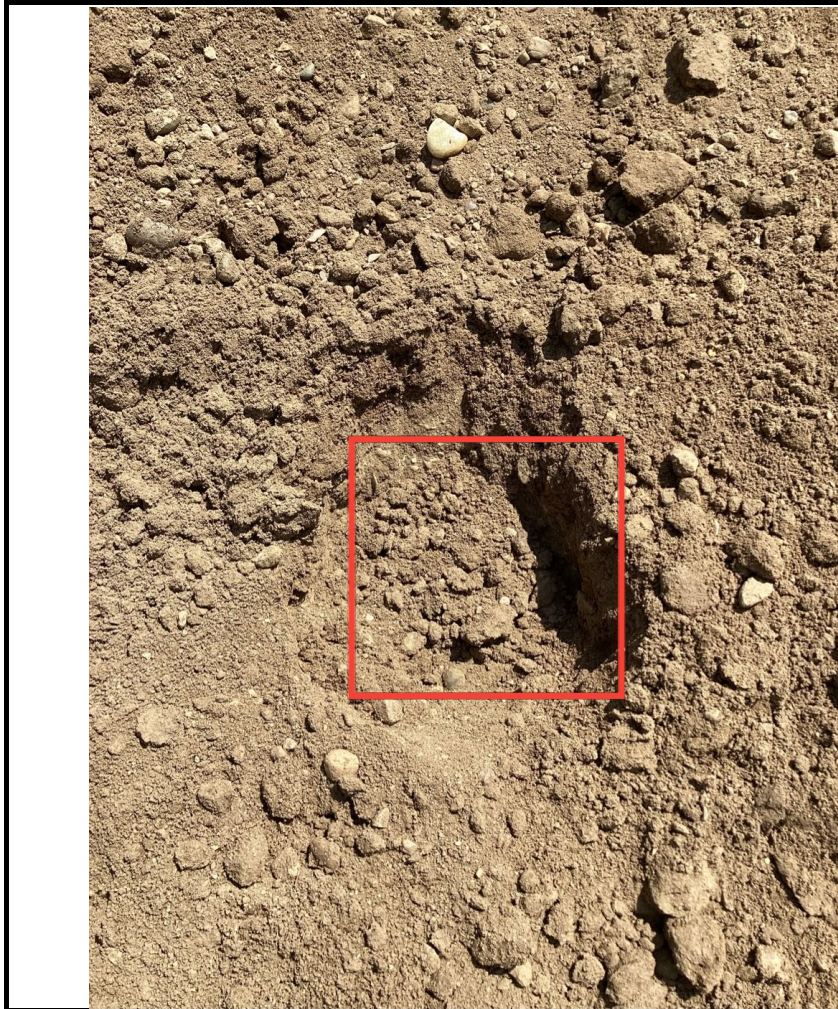
					
Material: Concrete	Volume:	Contents: Produced Water	Material: Concrete	Volume:	Contents: Produced Water
Notes/Conditions: FACING NORTH			Notes/Conditions: FACING EAST		

Photographic Log


Equipment ID: PWV01-S@2.5'		Equipment Type: Partially Buried Vault		Equipment ID: PWV01-W@2.5'		Equipment Type: Partially Buried Vault	
Material: Concrete	Volume:	Contents: Produced Water		Material: Concrete	Volume:	Contents:	
Notes/Conditions: FACING SOUTH				Notes/Conditions: FACING WEST			

Photographic Log

					
Equipment ID: PWV01-B@4'		Equipment Type: Partially Buried Vault	Equipment ID: PWV02-N@2.5'		Equipment Type: Partially Buried Vault
Material: Concrete	Volume:	Contents: Produced Water	Material: Concrete	Volume:	Contents: Produced Water
Notes/Conditions: FACING SOUTH			Notes/Conditions: FACING NORTH		



Photographic Log


Equipment ID: PWV02-E@2.5'	Equipment Type: Partially Buried Vault	
Material: Concrete	Volume:	Contents: Produced Water
Notes/Conditions: FACING EAST		





Equipment ID: PWV02-S@2.5'	Equipment Type: Partially Buried Vault	
Material: Concrete	Volume:	Contents: Produced Water
Notes/Conditions: FACING SOUTH		



Photographic Log

					
Equipment ID: PWW02-W@2.5'	Equipment Type: Partially Buried Vault		Equipment ID: PWW02-B@4'	Equipment Type: Partially Buried Vault	
Material: Steel	Volume:	Contents: Produced Water	Material: Concrete	Volume:	Contents: Produced Water
Notes/Conditions: FACING WEST			Notes/Conditions: FACING SOUTH		



Photographic Log

					
Equipment ID: AST01@0-6"		Equipment Type: Above Ground Storage Tank	Equipment ID: AST02@0-6"		Equipment Type: Above Ground Storage Tank
Material: Steel	Volume:	Contents: Crude Oil	Material: Steel	Volume:	Contents: Crude Oil
Notes/Conditions:			Notes/Conditions:		



Photographic Log

					
Equipment ID: SEP01-FL@3'	Equipment Type: Separator		Equipment ID: SEP01-DL@3'	Equipment Type: Separator	
Material: Steel	Volume:	Contents: Oil/Gas/Water	Material: Steel	Volume:	Contents: Oil/Gas/Water
Notes/Conditions: GEHRING 8 FL LOCATED IN THE SAME PIT AT THE PREVIOUS ABANDONED HEISER 1 FL			Notes/Conditions:		

Photographic Log

					
Material: Steel	Volume:	Contents: Oil/Gas/Water	Material: Steel	Volume:	Contents: Oil/Gas/Water
Notes/Conditions:			Notes/Conditions:		

Photographic Log

					
Equipment ID: MH01@0-6"		Equipment Type: Emission Control Device	Equipment ID: MH02@0-6"		Equipment Type: Emission Control Device
Material: Steel	Volume:	Contents: Oil/Gas/Water	Material: Steel	Volume:	Contents: Oil/Gas/Water
Notes/Conditions: METERHOUSE			Notes/Conditions: METERHOUSE		

Photographic Log



					
Equipment ID: GS01@0-6"		Equipment Type:	Equipment ID: BKG01@0-6", 2.5', 3', 4'		Equipment Type:
Material:	Volume:	Contents:	Material:	Volume:	Contents:
Notes/Conditions:			Notes/Conditions:		

TABLE 1
FIELD DATA SUMMARY TABLE
NOBLE ENERGY, INC. - 100322
GEHRING-64N64W 8SESE TANK BATTERY, WELD COUNTY, COLORADO
REM # 32629

Sample ID	Sample Date	Depth (ft. bgs)	GPS Data Latitude/Longitude		PDOP Value	VOC Concentration (ppm)
AST01@0-6"	07/26/2024	0-0.5	40.319840	-104.569222	0.8	0.1
AST02@0-6"	07/26/2024	0-0.5	40.319845	-104.569169	0.8	0.0
PWV01-B@4'	07/25/2024	4	40.319841	-104.569278	1.0	1.2
PWV01-N@2.5'	07/25/2024	2.5	40.319858	-104.569268	0.9	0.5
PWV01-E@2.5'	07/25/2024	2.5	40.319841	-104.569257	0.9	0.2
PWV01-S@2.5'	07/25/2024	2.5	40.319825	-104.569279	0.9	5.8
PWV01-W@2.5'	07/25/2024	2.5	40.319840	-104.569297	1.0	0.7
PWV02-B@4'	07/25/2024	4	40.319838	-104.569118	0.9	0.5
PWV02-N@2.5'	07/25/2024	2.5	40.319859	-104.569126	0.9	0.9
PWV02-E@2.5'	07/25/2024	2.5	40.319840	-104.569111	0.9	0.2
PWV02-S@2.5'	07/25/2024	2.5	40.319829	-104.569117	0.9	0.3
PWV02-W@2.5'	07/25/2024	2.5	40.319838	-104.569138	0.8	0.2
SEP01-DL@3'	07/26/2024	3	40.319845	-104.569559	1.0	0.0
SEP01-FL@3'	07/26/2024	3	40.319850	-104.569513	0.9	0.0
SEP02-DL@3'	07/26/2024	3	40.319859	-104.568772	0.9	0.3
SEP02-FL@3'	07/26/2024	3	40.319822	-104.568755	1.1	0.0
MH01@0-6"	07/26/2024	0-0.5	40.319813	-104.569544	0.8	0.0
MH02@0-6"	07/26/2024	0-0.5	40.319850	-104.568799	0.8	0.0
GS01@0-6"	07/26/2024	0-0.5	40.319884	-104.569528	0.9	0.0
BKG01@0-6"	07/26/2024	0-0.5	40.320094	-104.569181	0.8	0.0
BKG01@2.5'	07/26/2024	2.5	40.320094	-104.569181	0.8	0.0
BKG01@3'	07/26/2024	3	40.320094	-104.569181	0.8	0.0
BKG01@4'	07/26/2024	4	40.320094	-104.569181	0.8	0.0

Notes:

1. Global Positioning System (GPS) data is provided in decimal degrees using North American Datum (NAD) 83 UTM Zone 13 North.

2. Volatile organic compound (VOC) concentrations are measured in the field using a photoionization detector (PID).

PDOP = Position Dilution of Precision

ppm = Parts per million

ft. = Feet

bgs = Below ground surface

TABLE 2
SUMMARY OF VOLATILE ORGANIC SOIL CHEMISTRY DATA
NOBLE ENERGY, INC. - 100322
GEHRING-64N64W 8SESE TANK BATTERY, WELD COUNTY, COLORADO
REM # 32629

Sample ID	Sample Date	Depth (ft. bgs)	Benzene (mg/kg)	Toluene (mg/kg)	Ethyl-Benzene (mg/kg)	Xylenes (mg/kg)	1,2,4-Trimethyl-Benzene (mg/kg)	1,3,5-Trimethyl-Benzene (mg/kg)	Naphthalene (mg/kg)	TPH (mg/kg)	TPH GRO (mg/kg)	TPH DRO (mg/kg)	TPH ORO (mg/kg)
ECMC Table 915-1 Limits (Residential SSL)			1.2	490	5.8	58	30	27	2	500	500**		
ECMC Table 915-1 Limits (Protection of Groundwater SSL)			0.0026	0.69	0.78	9.9	0.0081	0.0087	0.0038	500	500**		
AST01@0-6"	07/26/2024	0-0.5	<0.0020	<0.0050	<0.0050	<0.010	<0.0050	<0.0050	<0.0038	<50	<0.50	<50	<50
AST02@0-6"	07/26/2024	0-0.5	<0.0020	<0.0050	<0.0050	<0.010	<0.0050	<0.0050	<0.0038	<50	<0.50	<50	<50
PWV01-B@4'	07/25/2024	4	<0.0020	<0.0050	<0.0050	<0.010	<0.0050	<0.0050	<0.0038	<50	<0.50	<50	<50
PWV01-S@2.5'	07/25/2024	2.5	<0.0020	<0.0050	<0.0050	<0.010	<0.0050	<0.0050	<0.0038	<50	<0.50	<50	<50
PWV02-B@4'	07/25/2024	4	<0.0020	<0.0050	<0.0050	<0.010	<0.0050	<0.0050	<0.0038	<50	<0.50	<50	<50
PWV02-N@2.5'	07/25/2024	2.5	<0.0020	<0.0050	<0.0050	<0.010	<0.0050	<0.0050	<0.0038	<50	<0.50	<50	<50
SEP01-DL@3'	07/26/2024	3	<0.0020	<0.0050	<0.0050	<0.010	<0.0050	<0.0050	<0.0038	<50	<0.50	<50	<50
SEP01-FL@3'	07/26/2024	3	<0.0020	<0.0050	<0.0050	<0.010	<0.0050	<0.0050	<0.0038	<50	<0.50	<50	<50
SEP02-DL@3'	07/26/2024	3	<0.0020	<0.0050	<0.0050	<0.010	<0.0050	<0.0050	<0.0038	<50	<0.50	<50	<50
SEP02-FL@3'	07/26/2024	3	<0.0020	<0.0050	<0.0050	<0.010	<0.0050	<0.0050	<0.0038	<50	<0.50	<50	<50
BKG01@0-6"	07/26/2024	0-0.5	<0.0020	<0.0050	<0.0050	<0.010	<0.0050	<0.0050	<0.0038	<50	<0.50	<50	<50
BKG01@2.5'	07/26/2024	2.5	<0.0020	<0.0050	<0.0050	<0.010	<0.0050	<0.0050	<0.0038	<50	<0.50	<50	<50
BKG01@3'	07/26/2024	3	<0.0020	<0.0050	<0.0050	<0.010	<0.0050	<0.0050	<0.0038	<50	<0.50	<50	<50
BKG01@4'	07/26/2024	4	<0.0020	<0.0050	<0.0050	<0.010	<0.0050	<0.0050	<0.0038	<50	<0.50	<50	<50

Notes:

1. **Bold** values exceed the ECMC Table 915-1 limit(s).
2. Pink & blue highlighted soil analytical values indicate an exceedance of the referenced soil screening level (SSL).
3. * Indicates laboratory minimum detection limit in excess of SSL.
4. ** Summation of GRO+DRO+ORO must be less than 500 mg/kg.

ECMC = Energy & Carbon Management Commission

(<) = Analytical result is less than the indicated laboratory reporting limit.

TPH-GRO = Total petroleum hydrocarbons - gasoline range organics

TPH-DRO = Total petroleum hydrocarbons - diesel range organics

TPH-ORO = Total petroleum hydrocarbons - oil range organics

mg/kg = Milligrams per kilogram

ft. = Feet

bgs = Below ground surface

TABLE 3
SUMMARY OF POLYCYCLIC AROMATIC HYDROCARBON SOIL CHEMISTRY DATA
NOBLE ENERGY, INC. - 100322
GEHRING-64N64W 8SESE TANK BATTERY, WELD COUNTY, COLORADO
REM # 32629

Sample ID	Sample Date	Depth (ft. bgs)	Acenaphthene (mg/kg)	Anthracene (mg/kg)	Benzo (a) Anthracene (mg/kg)	Benzo (a) Pyrene (mg/kg)	Benzo (b) Fluoranthene (mg/kg)	Benzo (k) Fluoranthene (mg/kg)	Chrysene (mg/kg)	Dibenzo (a,h) Anthracene (mg/kg)	Fluoranthene (mg/kg)	Fluorene (mg/kg)	Indeno (1,2,3-cd) Pyrene (mg/kg)	Pyrene (mg/kg)	1-Methyl - Naphthalene (mg/kg)	2-Methyl- Naphthalene (mg/kg)
ECMC Table 915-1 Limits (Residential SSL)			360	1,800	1.1	0.11	1.1	11	110	0.11	240	240	1.1	180	18	24
ECMC Table 915-1 Limits (Protection of Groundwater SSL)			0.55	5.8	0.011	0.24	0.3	2.9	9	0.096	8.9	0.54	0.98	1.3	0.006	0.019
AST01@0-6"	07/26/2024	0-0.5	<0.00500	<0.00500	<0.00500	<0.00500	<0.00500	<0.00500	<0.00500	<0.00500	<0.00500	<0.00500	<0.00500	<0.00500	<0.00500	<0.00500
AST02@0-6"	07/26/2024	0-0.5	<0.00500	<0.00500	<0.00500	<0.00500	<0.00500	<0.00500	<0.00500	<0.00500	<0.00500	<0.00500	<0.00500	<0.00500	<0.00500	<0.00500
PWV01-B@4'	07/25/2024	4	<0.00500	<0.00500	<0.00500	<0.00500	<0.00500	<0.00500	<0.00500	<0.00500	<0.00500	<0.00500	<0.00500	<0.00500	<0.00500	<0.00500
PWV01-S@2.5'	07/25/2024	2.5	<0.00500	<0.00500	<0.00500	<0.00500	<0.00500	<0.00500	<0.00500	<0.00500	<0.00500	<0.00500	<0.00500	<0.00500	<0.00500	<0.00500
PWV02-B@4'	07/25/2024	4	<0.00500	<0.00500	<0.00500	<0.00500	<0.00500	<0.00500	<0.00500	<0.00500	<0.00500	<0.00500	<0.00500	<0.00500	<0.00500	<0.00500
PWV02-N@2.5'	07/25/2024	2.5	<0.00500	<0.00500	<0.00500	<0.00500	<0.00500	<0.00500	<0.00500	<0.00500	<0.00500	<0.00500	<0.00500	<0.00500	<0.00500	<0.00500
SEP01-DL@3'	07/26/2024	3	<0.00500	<0.00500	<0.00500	<0.00500	<0.00500	<0.00500	<0.00500	<0.00500	<0.00500	<0.00500	<0.00500	<0.00500	<0.00500	<0.00500
SEP01-FL@3'	07/26/2024	3	<0.00500	<0.00500	<0.00500	<0.00500	<0.00500	<0.00500	<0.00500	<0.00500	<0.00500	<0.00500	<0.00500	<0.00500	<0.00500	<0.00500
SEP02-DL@3'	07/26/2024	3	<0.00500	<0.00500	<0.00500	<0.00500	<0.00500	<0.00500	<0.00500	<0.00500	<0.00500	<0.00500	<0.00500	<0.00500	<0.00500	<0.00500
SEP02-FL@3'	07/26/2024	3	<0.00500	<0.00500	<0.00500	<0.00500	<0.00500	<0.00500	<0.00500	<0.00500	<0.00500	<0.00500	<0.00500	<0.00500	<0.00500	<0.00500
BKG01@0-6"	07/26/2024	0-0.5	<0.00500	<0.00500	<0.00500	<0.00500	<0.00500	<0.00500	<0.00500	<0.00500	<0.00500	<0.00500	<0.00500	<0.00500	<0.00500	<0.00500
BKG01@2.5'	07/26/2024	2.5	<0.00500	<0.00500	<0.00500	<0.00500	<0.00500	<0.00500	<0.00500	<0.00500	<0.00500	<0.00500	<0.00500	<0.00500	<0.00500	<0.00500
BKG01@3'	07/26/2024	3	<0.00500	<0.00500	<0.00500	<0.00500	<0.00500	<0.00500	<0.00500	<0.00500	<0.00500	<0.00500	<0.00500	<0.00500	<0.00500	<0.00500
BKG01@4'	07/26/2024	4	<0.00500	<0.00500	<0.00500	<0.00500	<0.00500	<0.00500	<0.00500	<0.00500	<0.00500	<0.00500	<0.00500	<0.00500	<0.00500	<0.00500

Notes:

1. **Bold** values exceed the ECMC Table 915-1 limit(s).
2. Pink & blue highlighted soil analytical values indicate an exceedance of the referenced soil screening level (SSL).
3. * Indicates laboratory minimum detection limit in excess of SSL.

ECMC = Colorado Energy & Carbon Management Commission

(<) = Analytical result is less than the indicated laboratory reporting limit.

ft. = Feet

bgs = Below ground surface

mg/kg = Milligrams per kilogram

TABLE 4
SUMMARY OF SOIL SUITABILITY FOR RECLAMATION
NOBLE ENERGY, INC. - 100322
GEHRING-64N64W 8SESE TANK BATTERY, WELD COUNTY, COLORADO
REM # 32629

Sample ID	Sample Date	Depth (ft. bgs)	pH (Standard Units)	EC (mmhos/cm)	SAR (Standard Units)	Boron (mg/L)
ECMC Table 915-1 Soil Suitability Limits			6 - 8.3	<4	<6	2
AST01@0-6"	07/26/2024	0-0.5	7.91	1.09	0.265	<2.00
AST02@0-6"	07/26/2024	0-0.5	8.26	0.309	0.0627	<2.00
PWV01-B@4'	07/25/2024	4	8.37	0.286	0.616	<2.00
PWV01-S@2.5'	07/25/2024	2.5	9.03	0.517	2.78	2.32
PWV02-B@4'	07/25/2024	4	7.79	0.209	0.340	<2.00
PWV02-N@2.5'	07/25/2024	2.5	7.03	0.0562	0.0321	<2.00
SEP01-DL@3'	07/26/2024	3	8.13	0.293	0.0603	<2.00
SEP01-FL@3'	07/26/2024	3	7.59	0.151	0.255	<2.00
SEP02-DL@3'	07/26/2024	3	8.05	0.223	0.101	<2.00
SEP02-FL@3'	07/26/2024	3	8.15	0.306	0.0425	<2.00
BKG01@0-6"	07/26/2024	0-0.5	7.57	0.658	0.962	<2.00
BKG01@2.5'	07/26/2024	2.5	7.83	0.345	0.614	<2.00
BKG01@3'	07/26/2024	3	8.25	0.409	0.711	<2.00
BKG01@4'	07/26/2024	4	8.51	0.585	2.94	<2.00
Maximum Background Concentration			8.51	-	-	-

Notes:

1. **Bold** faced values exceed the ECMC Table 915-1 limit(s), but are within background concentrations.
2. **Bold** faced values exceed the ECMC Table 915-1 limit(s) and are above native background concentrations.
3. Brown highlighted soil analytical values indicate a regulatory exceedance.

ECMC = Colorado Energy & Carbon Management Commission

EC = Electrical conductivity

SAR = Sodium adsorption ratio

mmhos/cm = millimhos per centimeter

mg/L = milligram per liter

(<) = Analytical result is less than the indicated laboratory reporting limit.

ft. = Feet

bgs = Below ground surface

TABLE 5
SUMMARY OF METALS IN SOIL CHEMISTRY DATA
NOBLE ENERGY, INC. - 100322
GEHRING-64N64W 8SESE TANK BATTERY, WELD COUNTY, COLORADO
REM # 32629

Sample ID	Sample Date	Depth (ft. bgs)	Arsenic (mg/kg)	Barium (mg/kg)	Cadmium (mg/kg)	Chromium (VI) ^[4] (mg/kg)	Copper (mg/kg)	Lead (mg/kg)	Nickel (mg/kg)	Selenium (mg/kg)	Silver (mg/kg)	Zinc (mg/kg)
ECMC Table 915-1 Limits (Residential SSL)			0.68	15,000	71	0.3	3,100	400	1,500	390	390	23,000
ECMC Table 915-1 Limits (Protection of Groundwater SSL)			0.29	82	0.38	0.00067	46	14	26	0.26	0.8	370
AST01@0-6"	07/26/2024	0-0.5	1.89	43.0	<0.200	<0.30*	3.35	4.54	3.33	<0.260	<0.0200	13.9
AST02@0-6"	07/26/2024	0-0.5	1.70	36.2	<0.200	<0.30*	3.10	4.53	2.95	<0.260	<0.0200	12.3
PWV01-B@4'	07/25/2024	4	1.60	71.7	0.209	<0.30*	4.55	5.83	4.41	<0.260	0.0269	17.4
PWV01-S@2.5'	07/25/2024	2.5	1.58	81.5	<0.200	<0.30*	4.19	6.45	4.77	<0.260	0.0307	17.5
PWV02-B@4'	07/25/2024	4	1.36	39.0	<0.200	<0.30*	3.57	3.93	2.97	<0.260	<0.0200	12.9
PWV02-N@2.5'	07/25/2024	2.5	1.62	34.9	<0.200	<0.30*	3.45	4.07	2.85	<0.260	<0.0200	13.2
SEP01-DL@3'	07/26/2024	3	1.45	31.2	<0.200	<0.30*	3.05	3.41	2.70	<0.260	<0.0200	11.2
SEP01-FL@3'	07/26/2024	3	1.61	30.9	<0.200	<0.30*	3.03	4.08	2.79	<0.260	<0.0200	12.3
SEP02-DL@3'	07/26/2024	3	1.91	38.4	<0.200	<0.30*	4.57	5.13	3.15	<0.260	<0.0200	13.5
SEP02-FL@3'	07/26/2024	3	2.03	45.2	<0.200	<0.30*	5.38	4.92	3.26	<0.260	<0.0200	13.6
BKG01@0-6"	07/26/2024	0-0.5	1.99	47.6	<0.200	<0.30*	3.87	4.48	3.45	<0.260	0.0240	14.1
BKG01@2.5'	07/26/2024	2.5	2.19	50.5	<0.200	<0.30*	3.29	5.40	3.74	<0.260	0.0215	15.1
BKG01@3'	07/26/2024	3	1.38	32.8	<0.200	<0.30*	2.56	3.09	2.92	<0.260	<0.0200	10.3
BKG01@4'	07/26/2024	4	1.46	26.4	<0.200	<0.30*	2.32	2.76	2.73	<0.260	<0.0200	9.95
Maximum Background Concentration			2.19	-	-	-	-	-	-	-	-	-
Maximum Background Concentration X 1.25			2.74	-	-	-	-	-	-	-	-	-
Mean Background Concentration			1.76	-	-	-	-	-	-	-	-	-
Mean Background Concentration X 1.25			2.19	-	-	-	-	-	-	-	-	-

Notes:

1. **Bold** faced values exceed the ECMC Table 915-1 limit(s), but are within 1.25x background concentrations.
2. **Red** faced values exceed the ECMC Table 915-1 limit(s) and native background concentrations.
3. Red & blue highlighted soil analytical values indicate an exceedance of the referenced soil screening level (SSL).
4. Compound falls within ECMC Table 915-1 Footnote 9.
5. Non-detect background results accounted for in the highest background concentration by using the reporting limit.

ECMC = Energy & Carbon Management Commission

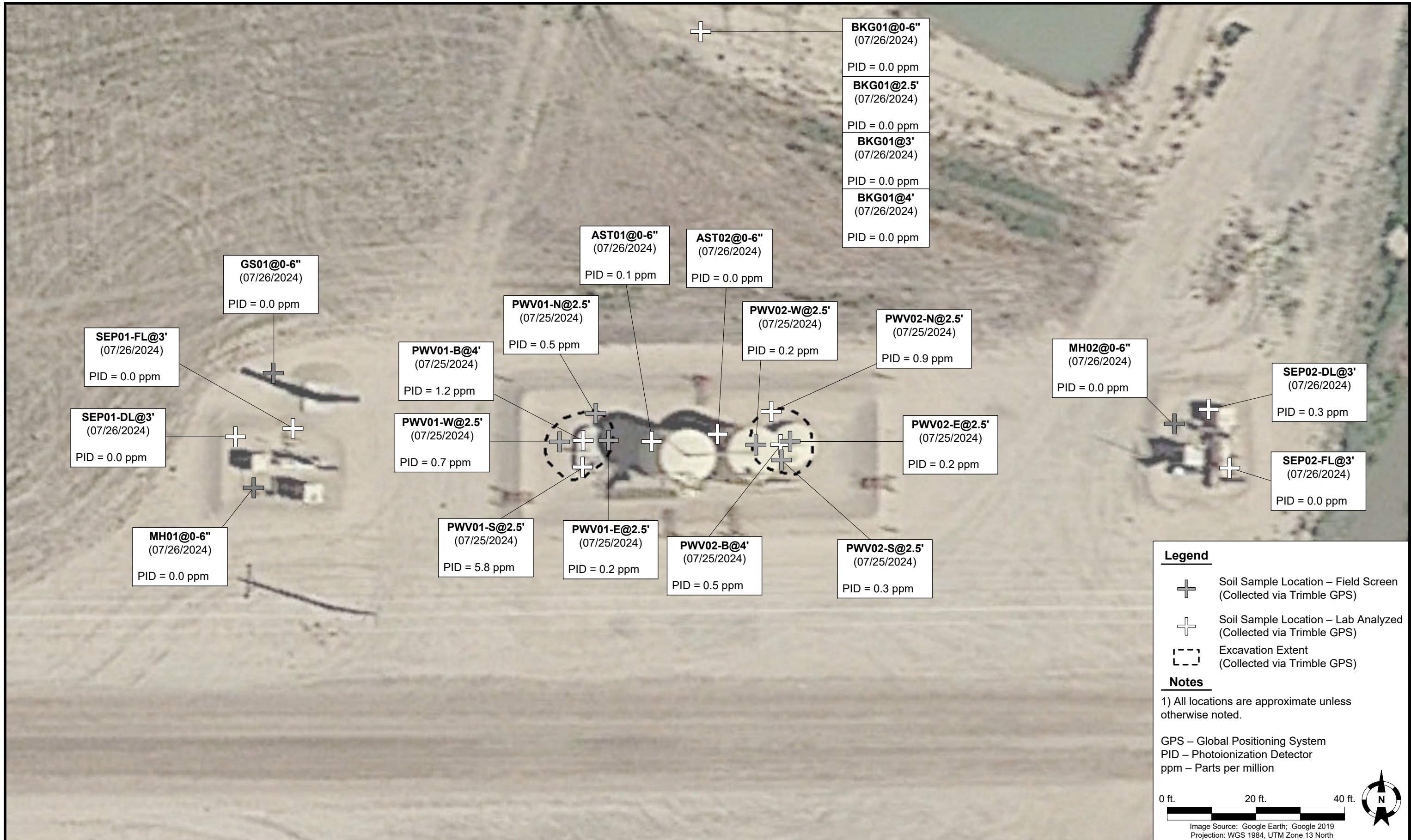
(<) = Analytical result is less than the indicated laboratory reporting limit.

mg/kg = Milligrams per kilogram

ft. = Feet

bgs = Below ground surface

* Indicates laboratory minimum detection limit in excess of SSL



DATE: August 5, 2024

DESIGNED BY: J. Whritenour

DRAWN BY: L. Reed

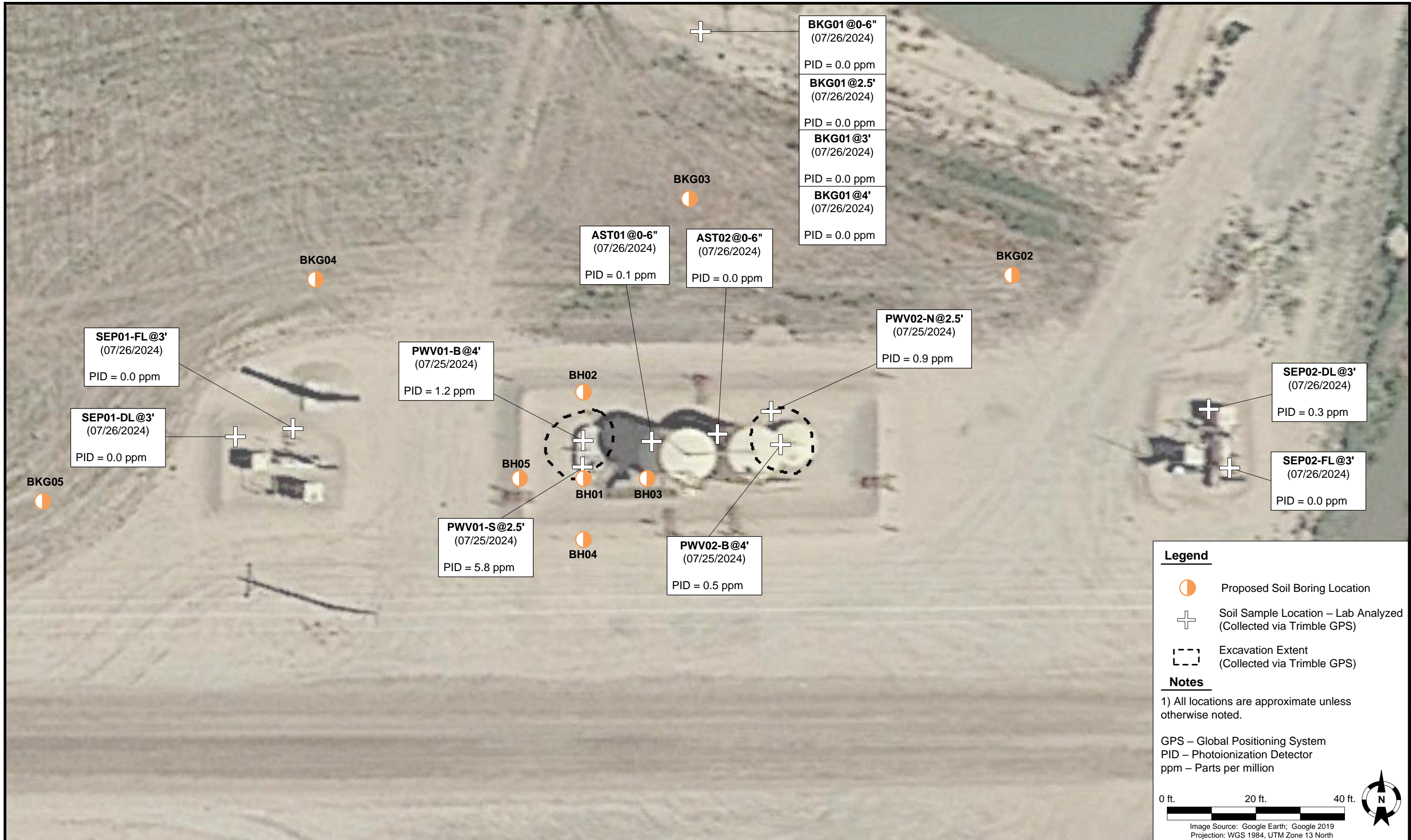


TASMAN Tasman, Inc.
 6855 W 119th Avenue
 Broomfield, CO 80020

Noble Energy, Inc. – 100322 – DJ Basin
GEHRING-64N64W 8SESE
 SESE, Section 8, Township 4 North, Range 64 West
 Weld County, Colorado

SOIL SAMPLE
 LOCATION MAP
 (TANK BATTERY)

FIGURE
 1



DATE: October 1, 2024

DESIGNED BY: J. Whritenour

DRAWN BY: L. Buck



TASMAN Tasman, Inc.
 6855 W 119th Avenue
 Broomfield, CO 80020

Noble Energy, Inc. – 100322 – DJ Basin
GEHRING-64N64W 8SESE
 SESE, Section 8, Township 4 North, Range 64 West
 Weld County, Colorado

PROPOSED SOIL BORING LOCATION MAP

FIGURE 2