

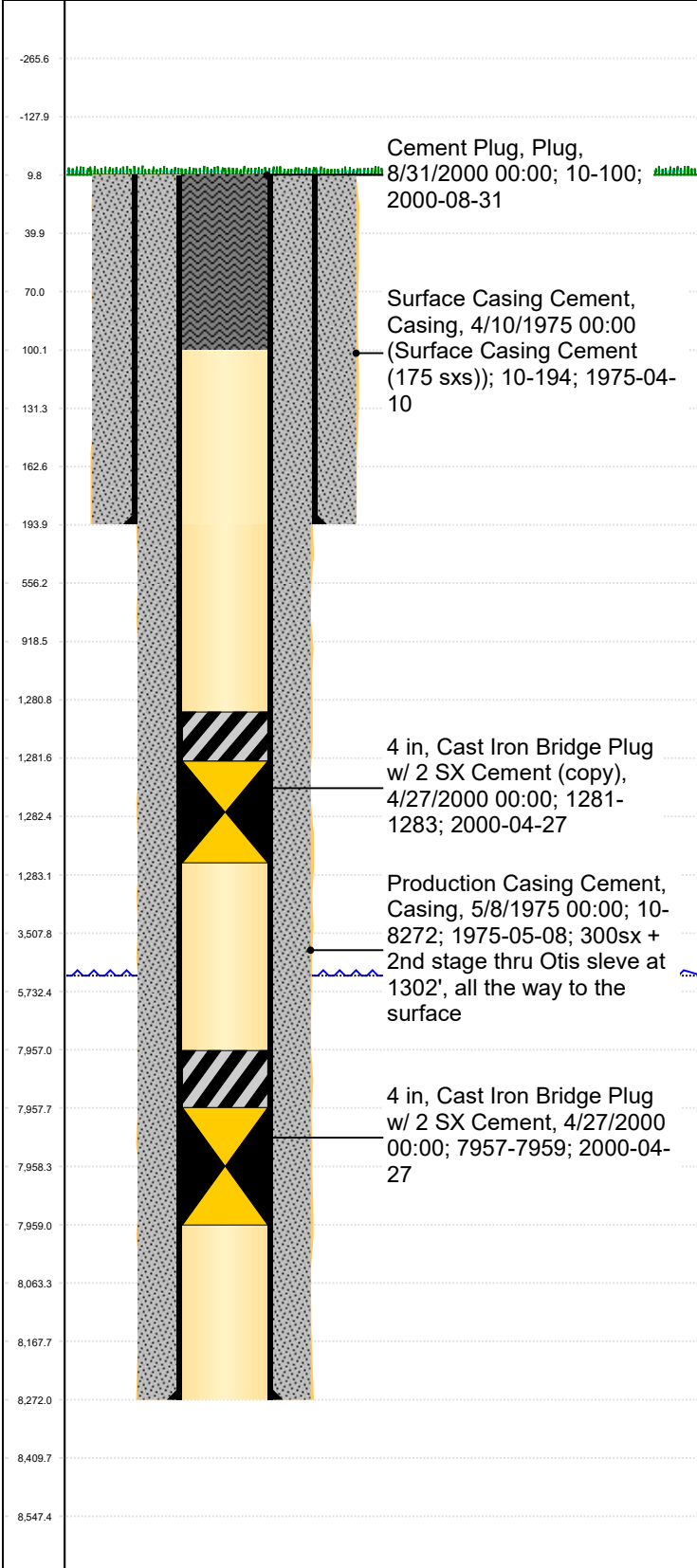


# PA Wellbore For State - Vertical

Well Name: Cutler 1-A

Original Hole [Land]

MD (ftK B)  
Vertical schematic (actual)



Well Header				
Surface UWI 0500107003	Business Unit Rockies	Gov Auth Dist Evans	Prod Tree Loc Land	
Orig. KB to Gnd (ft) 10.00	Original Spud Date 4/9/1975	Abandon Date 6/4/1975	Well Sub-Status PA	High... N
Comment				

Surface Location (Congressional)									
Qtr 3 SW	Qtr 4 NE	Section	Twonshp	Twonsh...	Range	Rng E/...	Latitude (°) 39.92342	Longitude (°) -104.797108	

Wellbore Sections			
Section Des	Hole Size (in)	Top Depth (ftKB)	Btm Depth (ftKB)
Surface	12 1/4	10.0	194.0
Production	7 7/8	194.0	8,272.0

Casing Strings						
Csg Des	Run Date	OD (in)	Wt/Len (lb/ft)	Grade	Top Depth (MD) (ftKB)	Set Depth (MD) (ftKB)
Surface	4/10/1975	8 5/8	24.00	J-55	10	194
Production	5/8/1975	4 1/2	11.60	J-55	10	8272

Cement			
Des	Start Date	Top (ftKB)	Btm (ftKB)
Surface Casing Cement (175 sxs)	4/10/1975	10.0	194.0
Production Casing Cement	5/8/1975	10.0	8,272.0
Cement Plug	8/31/2000	10.0	100.0

Zone Statuses					
Zone Name	Status Date	Status	Fluid Type	Job	Prod Method

Other In Hole					
Run Date	Des	Make	OD (in)	Top (ftKB)	Btm (ftKB)
4/27/2000	Cast Iron Bridge Plug w/ 2 SX Cement		4	7,957.0	7,959.0
4/27/2000	Cast Iron Bridge Plug w/ 2 SX Cement (copy)		4	1,281.0	1,283.0

Logs			
Date	Type	Depth Top (MD) (ftKB)	Btm (ftKB)