

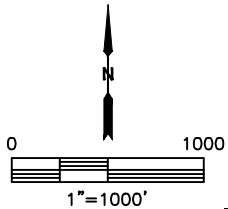
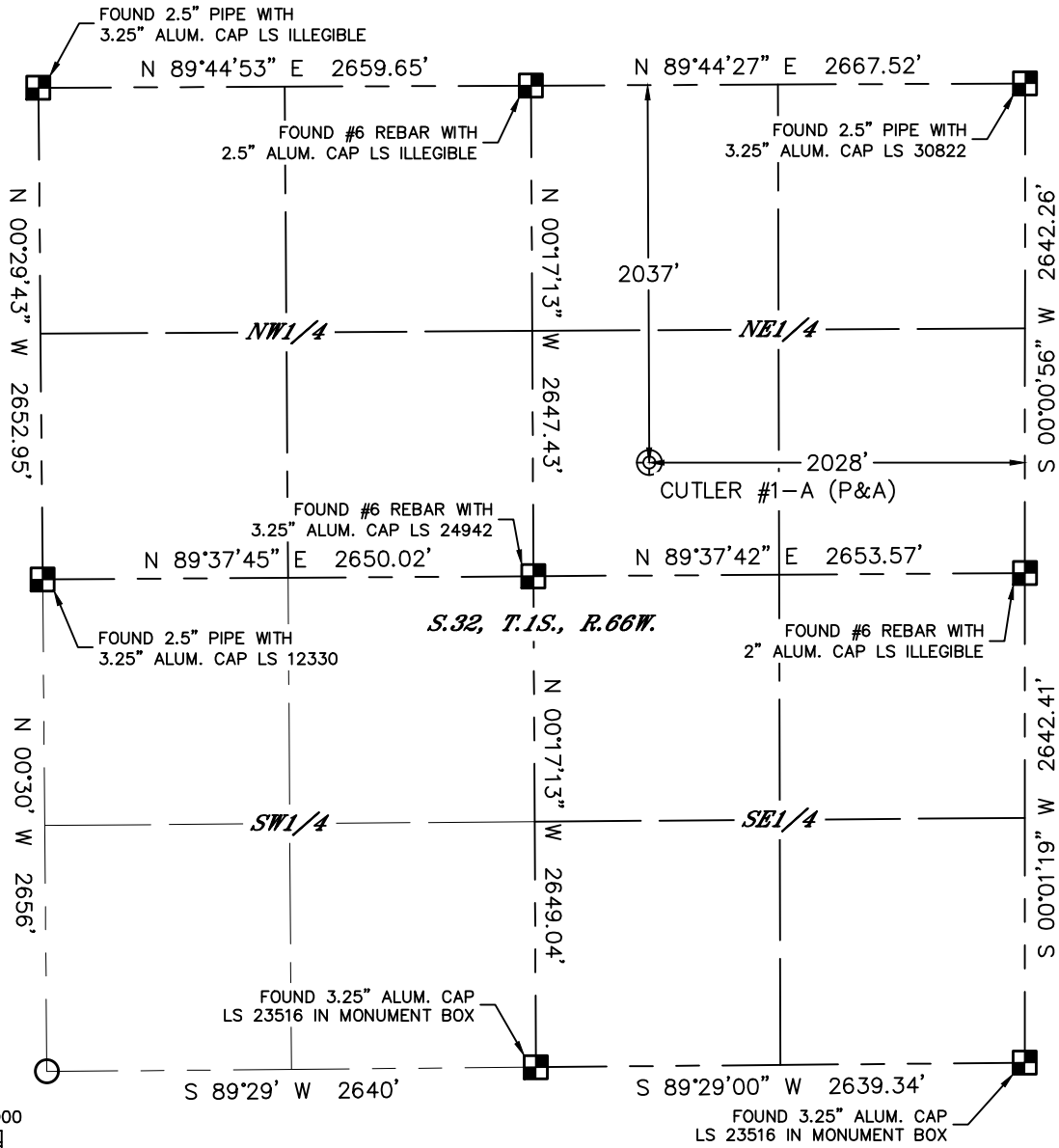


Lat40°, Inc. 6250 W. 10th Street, Unit 2, Greeley, CO 970-515-5294

# PLUGGED AND ABANDONED WELL EXHIBIT

## CUTLER #1-A

SECTION: 32  
TOWNSHIP: 1S  
RANGE: 66W  
6TH. P.M.  
ADAMS COUNTY, CO

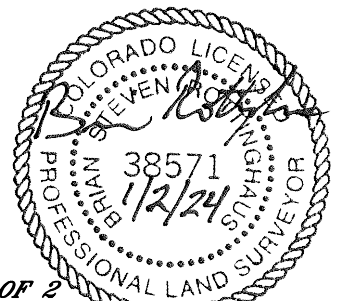


CLIENT: PDC ENERGY, INC.				LANDMAN: PAUL MONTVILLE			
INSTRUMENT OPERATOR: CASEY KOHOUT				SURVEY DATE: 12/21/2023		SURFACE USE: CROPLAND	
SHL FOOTAGE		SHL LAT °	SHL LONG °	SHL PDOP	SHL ELEV (FT.)	SHL 1/4/1/4	SHL S-T-R
2037	FNL	2028	FEL	39.92326	-104.79723	1.0	5076
DESCRIPTION: CLIENT EXCAVATED AND EXPOSED THE WELL. LOCATED TOP OF STEEL PLATE ON EXPOSED WELL.							

- NOTE:
- 1) Bearings shown are Grid Bearings of the Colorado State Plane Coordinate System, North Zone, North American Datum 1983. The lineal dimensions as contained herein are based upon the "U.S. Survey Foot."
  - 2) Distances to section lines measured at 90 degrees from said section lines.
  - 3) Ground elevations are based on an observed GPS elevation (NAVD 1988 DATUM).
  - 4) Latitude and Longitude shown are (NAD 83 DATUM).
  - 5) Sectional data as shown hereon is from previous surveys and was not verified for this P&A Exhibit.
  - 6) This map does not represent a boundary survey.

### LEGEND

- = ALIQUOT MONUMENT AS DESCRIBED
- = CALCULATED POSITION PER EDMUNDSON LE 33-082HC WELL LOCATION PLAT
- = ABANDONED WELL



SHEET 1 OF 2

Brian S. Rottinghaus—On behalf of Lat40°, Inc.  
 Colorado Licensed Professional Land Surveyor No. 38571  
 DATE: 1/2/2024  
 PROJECT#: 2023463



Lat40°, Inc. 6250 W. 10th Street, Unit 2, Greeley, CO 970-515-5294

# PLUGGED AND ABANDONED WELL EXHIBIT

**CUTLER #1-A**

SECTION: 32  
TOWNSHIP: 1S  
RANGE: 66W  
6TH. P.M.  
ADAMS COUNTY, CO  
DATE: 12/21/2023



VIEW NORTH



VIEW WEST



VIEW EAST



VIEW SOUTH