

Well Name & API: **IVAN KLEIN 13-20, 05-123-21775**

Flowline Abandonment Type:

Partial Abandon in Place to area of conflict due to road and railroad crossings.

Flowlines

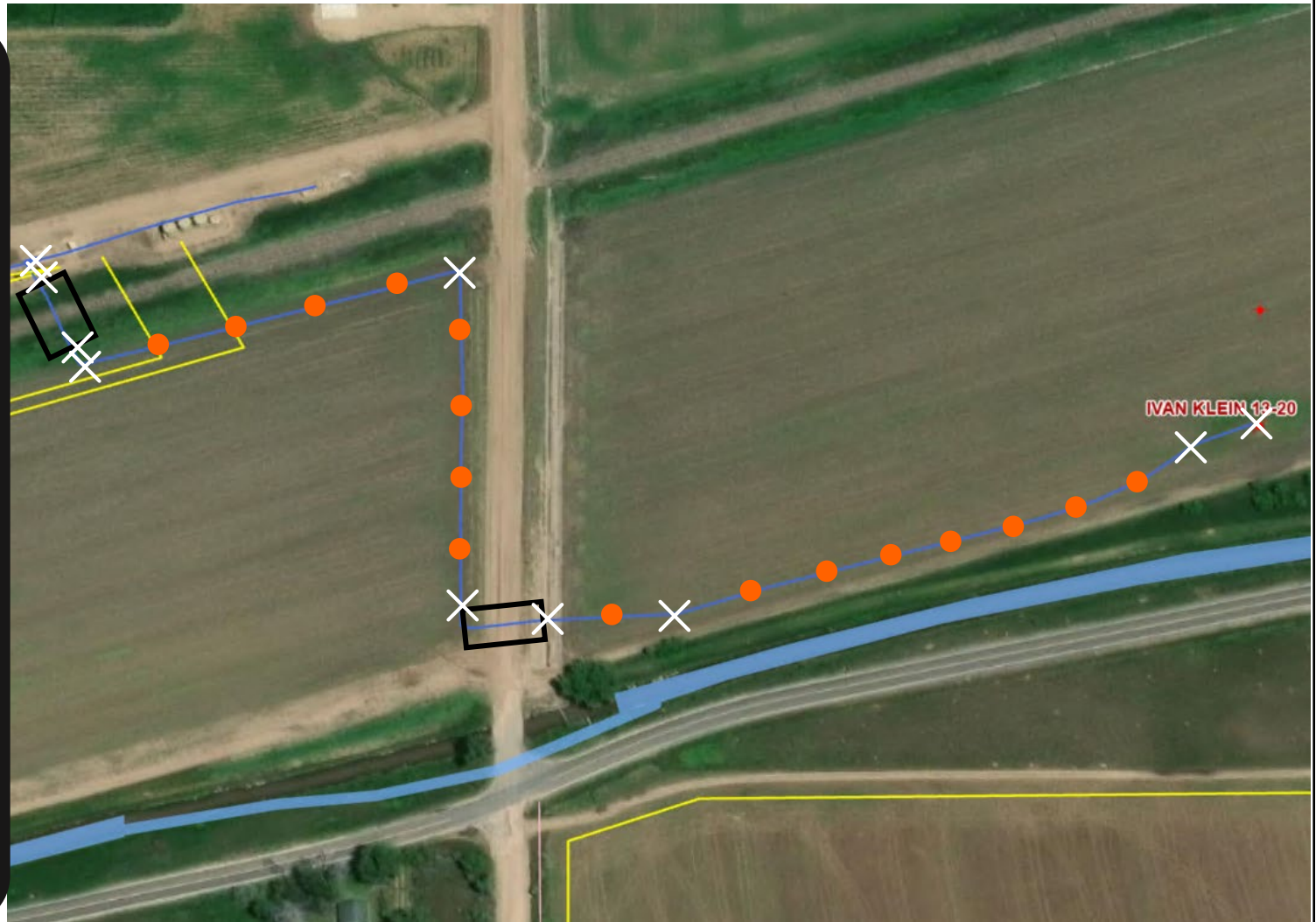
- Abandoned
- Active
- Out of Service
- Pre-commissioned
- Removed
- Turned into Air Line
- Area of Conflict (Proposed Abandon-in-Place Area)
- ✕ Proposed Soil Sample Location
- Field Screening Location

Wells

- Active
- Abandoned Location
- Dry & Abandoned
- ✶ Plugged & Abandoned
- ✶ Producing
- ✶ Shut-In
- Temporarily Abandoned

Third-Party Pipelines

- — —
- — —
- — —
- — —
- — —
- — —
- NWI Wetlands



Well Latitude/Longitude: 40.382340/-104.580964
 Flowline Length (ft): 1706

Flowline Point A Latitude/Longitude: 40.38234689/-104.58098194
 Flowline Point B Latitude/Longitude: 40.38289184/-104.58495635

Created By: Clara Jenck
 Date: 10/09/2024

