



PO Box 329  
Ft. Lupton, CO 80621  
(303) 654-9202

"Here Safety Meets Quality at the Axis of Efficiency"

| Date of Service  | Job Type    | Customer      | Consultant     | Well Name       | Last Tckt   | Ticket #         |             |
|------------------|-------------|---------------|----------------|-----------------|-------------|------------------|-------------|
| 8/14/2024        | Stub Plug   | Civitas       | Robbie Dampier | North Rinn 24-9 | No          | 3817             |             |
| State            | County      | API           |                | Rig             | Operator    |                  |             |
| Colorado         | Weld        | 05-123-33896  |                | Hurricane 42    | James Wiley |                  |             |
| Well Information |             |               |                |                 |             | Water            |             |
|                  | Work String | Prod CSG      | Surface        | OH (I.D.)       | Annular     | Temp             | 80 °F       |
| OD & Weight      | 2 3/8" 4.7# | 4 1/2" 11.6#  |                | 10              |             | PH               | 7           |
| Factor           | 0.00387     | 0.0155        | 0              | 0.0971          |             | Chloride         | 1           |
| Length           | 2600        | 100           |                | 200             |             | Well Description | Depth in Ft |
| Capacity         | 10.06       | 1.55          | 0.00           | 19.43           | 0.00        | EOT              | 2,600'      |
| OD & Weight      |             |               |                |                 |             | TOC              | 2,300'      |
| Factor           | 0           | 0             | 0              | 0.0000          |             |                  |             |
| Length           |             |               |                |                 |             |                  |             |
| Capacity         | 0.00        | 0.00          | 0.00           | 0.00            | 0.00        |                  |             |
| OD & Weight      |             |               |                |                 |             |                  |             |
| bbl/ft           | 0           | 0             | 0              | 0.0000          |             |                  |             |
| Length           |             |               |                |                 |             |                  |             |
| Capacity         | 0.00        | 0.00          | 0.00           | 0.00            | 0.00        |                  |             |
| Buoyancy         | 0.87        | Buoyancy      | 0.87           | Buoyancy        | 0.87        |                  |             |
| Lift Pressure    | PRV         | Lift Pressure | PRV            | Lift Pressure   | PRV         |                  |             |
| 2400             | 1750        |               |                |                 |             |                  |             |

Drivers, Crew and Equipment Allocation

| Driver and Heavy Duty Equipment |         |         |         | Crew and Light Duty Equipment |           |         | Misc. Tools or Equipment |
|---------------------------------|---------|---------|---------|-------------------------------|-----------|---------|--------------------------|
| Driver                          | Tractor | Trailer | Mileage | Crew                          | Equipment | Mileage | Required or Requested    |
| Christopher Sheets              | 8187    | P 4787  |         | James Wiley                   | 6071      |         |                          |
| Kirk Kallhoff                   | 1634    | B 4302  |         |                               |           |         |                          |
|                                 |         |         |         |                               |           |         |                          |
|                                 |         |         |         |                               |           |         |                          |
|                                 |         |         |         |                               |           |         |                          |
|                                 |         |         |         |                               |           |         |                          |
| Total Heavy Duty Mileage        |         |         | 0       | Total Light Duty Mileage      |           |         | 0                        |

| 1K E-Thixo           | 105    | Blend | 0     | Blend | 0   |      |       |
|----------------------|--------|-------|-------|-------|-----|------|-------|
| Desc                 | Qty    | Rate  | Total | Desc  | Qty | Rate | Total |
| 1K E-Thixo           | 105.00 |       |       |       |     |      |       |
| Blend                | 0.00   |       |       |       |     |      |       |
| Blend                | 0.00   |       |       |       |     |      |       |
| Pump & Bulk 1st 4hrs | 1.00   |       |       |       |     |      |       |
| Data Recording       | 1.00   |       |       |       |     |      |       |
| HD Mileage - Pump    | 40.00  |       |       |       |     |      |       |
| HD Mileage - Bulk    | 40.00  |       |       |       |     |      |       |
| LD Mileage - Pickup  | 40.00  |       |       |       |     |      |       |
|                      |        |       |       |       |     |      |       |
|                      |        |       |       |       |     |      |       |
|                      |        |       |       |       |     |      |       |
|                      |        |       |       |       |     |      |       |

Print 

**PO Box 329**

**Ft. Lupton, CO 80621**

**(303) 654-9202**

*"Here Safety meets Quality at the Axis of Efficiency"*

| Date of Service |        | Customer     | Consultant     | Well Name       | Last Tckt | Ticket #    |
|-----------------|--------|--------------|----------------|-----------------|-----------|-------------|
| 8/14/2024       |        | Civitas      | Robbie Dampier | North Rinn 24-9 | No        | 3817        |
| State           | County | API          |                | Rig             | Mileage   | Operator    |
| Colorado        | Weld   | 05-123-33896 |                | Hurricane 42    | 0         | James Wiley |

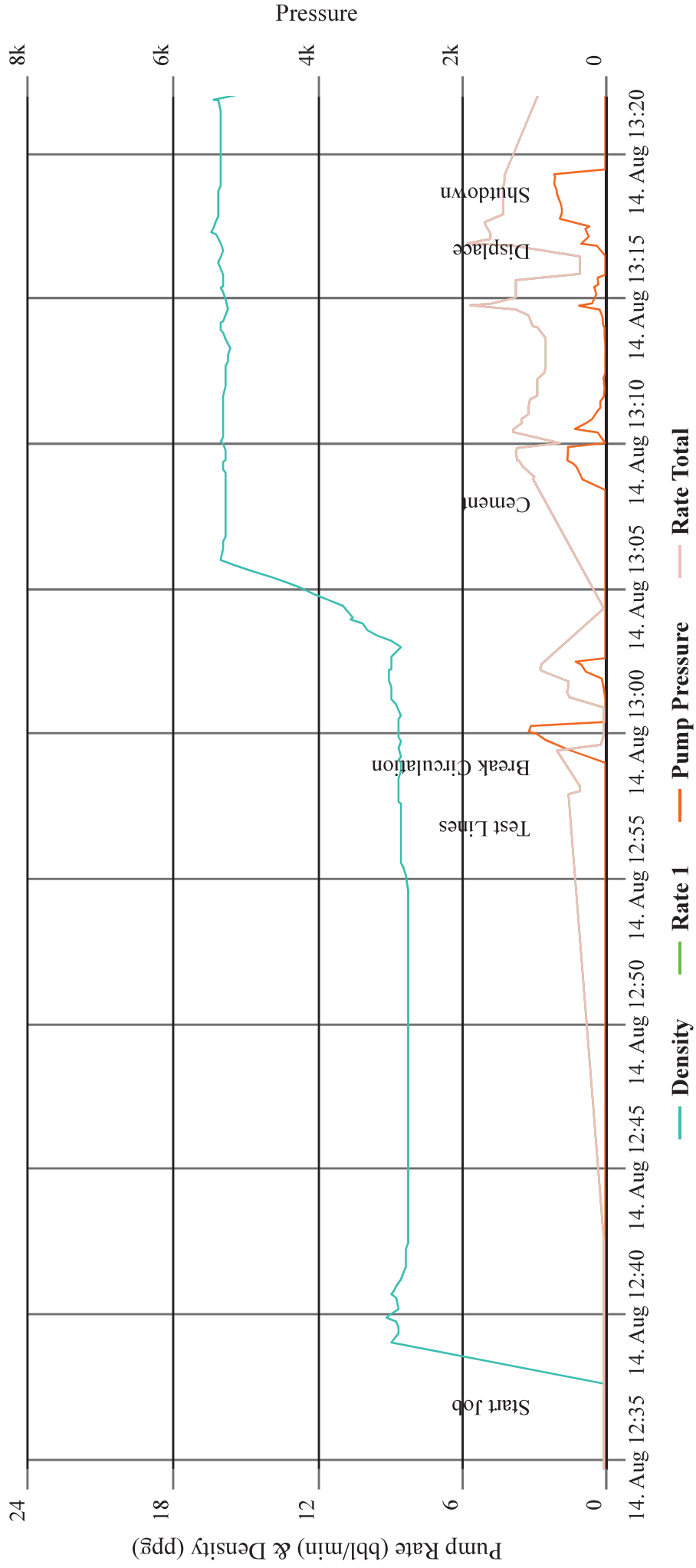
### Job Specific Remarks

[illegible]

|                       |        |        |                 |
|-----------------------|--------|--------|-----------------|
| Customer Name (print) | (sign) | (Date) | Date of Service |
|                       |        |        | Ticket total    |

# NORTH RINN 24-9

## CEMENTING





PO Box 329  
Ft. Lupton, CO 80621  
(303) 654-9202

"Here Safety Meets Quality at the Axis of Efficiency"

| Date of Service  | Job Type     | Customer      | Consultant     | Well Name       |         | Last Tckt        | Ticket #    |
|------------------|--------------|---------------|----------------|-----------------|---------|------------------|-------------|
| 8/15/2024        | Balance Plug | Civitas       | Robbie Dampier | North Rinn 24-9 |         | No               | 3827        |
| State            | County       | API           |                | Rig             |         | Operator         |             |
| Colorado         | Weld         | 05-123-33896  |                | Hurricane 42    |         | Jonathan Brown   |             |
| Well Information |              |               |                |                 |         | Water            |             |
|                  | Work String  | Prod CSG      | Surface        | OH (I.D.)       | Annular | Temp             | 84 °F       |
| OD & Weight      | 2 3/8" 4.7#  |               |                | 9               |         | PH               | 7           |
| Factor           | 0.00387      | 0             | 0              | 0.0787          |         | Chloride         | 0           |
| Length           | 1157         |               |                | 207             |         | Well Description | Depth in Ft |
| Capacity         | 4.48         | 0.00          | 0.00           | 16.29           | 0.00    |                  |             |
| OD & Weight      |              |               |                |                 |         | EOT              | 1157'       |
| Factor           | 0            | 0             | 0              | 0.0000          |         | TOC              | 950'        |
| Length           |              |               |                |                 |         |                  |             |
| Capacity         | 0.00         | 0.00          | 0.00           | 0.00            | 0.00    |                  |             |
| OD & Weight      |              |               |                |                 |         |                  |             |
| bbl/ft           | 0            | 0             | 0              | 0.0000          |         |                  |             |
| Length           |              |               |                |                 |         |                  |             |
| Capacity         | 0.00         | 0.00          | 0.00           | 0.00            | 0.00    |                  |             |
| Buoyancy         | 0.76         | Buoyancy      | 0.76           | Buoyancy        | 0.76    |                  |             |
| Lift Pressure    | PRV          | Lift Pressure | PRV            | Lift Pressure   | PRV     |                  |             |
| 933              | 750          |               |                |                 |         |                  |             |

#### Drivers, Crew and Equipment Allocation

| Driver and Heavy Duty Equipment |         |         |         | Crew and Light Duty Equipment |           |         | Misc. Tools or Equipment |
|---------------------------------|---------|---------|---------|-------------------------------|-----------|---------|--------------------------|
| Driver                          | Tractor | Trailer | Mileage | Crew                          | Equipment | Mileage | Required or Requested    |
| Cole West                       | 1636    | P 2904  | 40      | Jonathan Brown                | 7293      | 40      |                          |
| Victor Conaway                  | 4367    | B 2667  | 40      |                               |           |         |                          |
|                                 |         |         |         |                               |           |         |                          |
|                                 |         |         |         |                               |           |         |                          |
|                                 |         |         |         |                               |           |         |                          |
|                                 |         |         |         |                               |           |         |                          |
| Total Heavy Duty Mileage        |         |         | 80      | Total Light Duty Mileage      |           | 40      |                          |

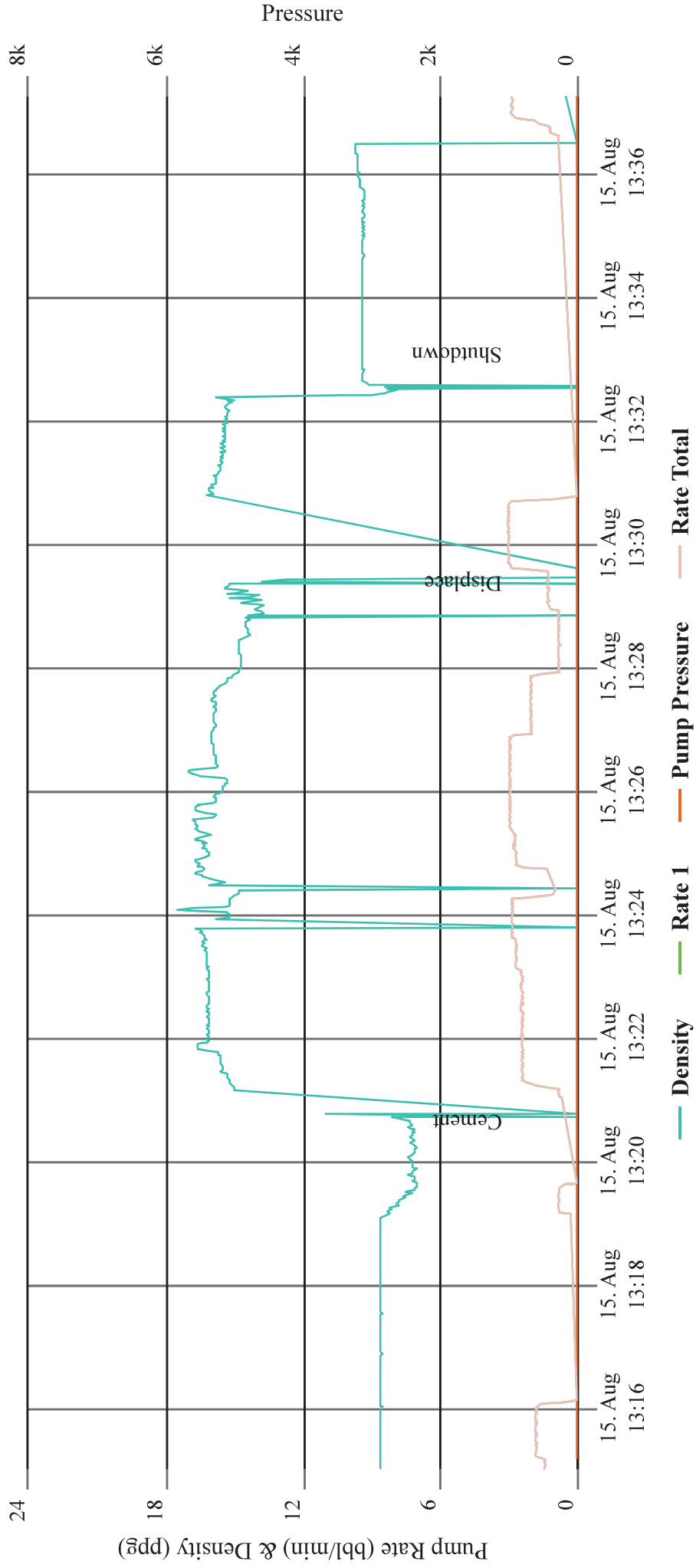
| 1K E-Thixo           | 80    | Blend | 0     | Blend | 0   |      |       |
|----------------------|-------|-------|-------|-------|-----|------|-------|
| Desc                 | Qty   | Rate  | Total | Desc  | Qty | Rate | Total |
| 1K E-Thixo           | 80.00 |       |       |       |     |      |       |
| Blend                | 0.00  |       |       |       |     |      |       |
| Blend                | 0.00  |       |       |       |     |      |       |
| Pump & Bulk 1st 4hrs | 1.00  |       |       |       |     |      |       |
| Data Recording       | 1.00  |       |       |       |     |      |       |
| HD Mileage - Pump    | 40.00 |       |       |       |     |      |       |
| HD Mileage - Bulk    | 40.00 |       |       |       |     |      |       |
| LD Mileage - Pickup  | 40.00 |       |       |       |     |      |       |
|                      |       |       |       |       |     |      |       |
|                      |       |       |       |       |     |      |       |
|                      |       |       |       |       |     |      |       |
|                      |       |       |       |       |     |      |       |

Print 



# NORTH RINN 24-9

## CEMENTING





PO Box 329  
Ft. Lupton, CO 80621  
(303) 654-9202

"Here Safety Meets Quality at the Axis of Efficiency"

| Date of Service                        | Job Type    | Customer      | Consultant     | Well Name                     | Last Tckt | Ticket #         |                          |
|--|-------------|---------------|----------------|-------------------------------|-----------|------------------|--------------------------|
| 8/16/2024                              | Surface     | Civitas       | Robbie Dampier | North Rinn 24-9               | Yes       | 3839             |                          |
| State                                  | County      | API           | Rig            | Operator                      |           |                  |                          |
| Colorado                               | Weld        | 05-123-33896  | Hurricane 42   | James Wiley                   |           |                  |                          |
| Well Information                       |             |               |                | Water                         |           |                  |                          |
|  | Work String | Prod CSG      | Surface        | OH (I.D.)                     | Annular   | Temp             | 80 °F                    |
| OD & Weight                            | 2 3/8" 4.7# |               |                | 10                            |           | PH               | 7                        |
| Factor                                 | 0.00387     | 0             | 0              | 0.0971                        |           | Chloride         | 1                        |
| Length                                 | 848         |               |                | 51                            |           | Well Description | Depth in Ft              |
| Capacity                               | 3.28        | 0.00          | 0.00           | 4.95                          | 0.00      | EOT              | 848'                     |
| OD & Weight                            |             |               |                |                               |           | TOC              | surface                  |
| Factor                                 | 0           | 0             | 0              | 0.0000                        |           |                  |                          |
| Length                                 |             |               |                |                               |           |                  |                          |
| Capacity                               | 0.00        | 0.00          | 0.00           | 0.00                          | 0.00      |                  |                          |
| OD & Weight                            |             |               |                |                               |           |                  |                          |
| bbl/ft                                 | 0           | 0             | 0              | 0.0000                        |           |                  |                          |
| Length                                 |             |               |                |                               |           |                  |                          |
| Capacity                               | 0.00        | 0.00          | 0.00           | 0.00                          | 0.00      |                  |                          |
| Buoyancy                               | 0.76        | Buoyancy      | 0.76           | Buoyancy                      | 0.76      |                  |                          |
| Lift Pressure                          | PRV         | Lift Pressure | PRV            | Lift Pressure                 | PRV       |                  |                          |
| 684                                    | 500         |               |                |                               |           |                  |                          |
| Drivers, Crew and Equipment Allocation |             |               |                |                               |           |                  |                          |
| Driver and Heavy Duty Equipment        |             |               |                | Crew and Light Duty Equipment |           |                  | Misc. Tools or Equipment |
| Driver                                 | Tractor     | Trailer       | Mileage        | Crew                          | Equipment | Mileage          | Required or Requested    |
| Fabian Guerrero                        | 8187        | P 4787        | 40             | James Wiley                   | 6071      | 40               |                          |
| Kyle Carr                              | 1634        | B 4302        | 40             |                               |           |                  |                          |
|  |             |               |                |                               |           |                  |                          |
|  |             |               |                |                               |           |                  |                          |
|  |             |               |                |                               |           |                  |                          |
|  |             |               |                |                               |           |                  |                          |
| Total Heavy Duty Mileage               |             |               | 80             | Total Light Duty Mileage      |           | 40               |                          |
| 1K E-Thixo                             | 291         | Blend         | 0              | Blend                         | 0         |                  |                          |
| Desc                                   | Qty         | Rate          | Total          | Desc                          | Qty       | Rate             | Total                    |
| 1K E-Thixo                             | 291.00      |               |                |                               |           |                  |                          |
| Blend                                  | 0.00        |               |                |                               |           |                  |                          |
| Blend                                  | 0.00        |               |                |                               |           |                  |                          |
| Pump & Bulk 1st 4hrs                   | 1.00        |               |                |                               |           |                  |                          |
| Data Recording                         | 1.00        |               |                |                               |           |                  |                          |
| HD Mileage - Pump                      | 40.00       |               |                |                               |           |                  |                          |
| HD Mileage - Bulk                      | 40.00       |               |                |                               |           |                  |                          |
| LD Mileage - Pickup                    | 40.00       |               |                |                               |           |                  |                          |
|  |             |               |                |                               |           |                  |                          |
|  |             |               |                |                               |           |                  |                          |
|  |             |               |                |                               |           |                  |                          |
|  |             |               |                |                               |           |                  |                          |

Print

|                       |        |        |
|-----------------------|--------|--------|
| Customer Name (print) | (sign) | (Date) |
|                       |        |        |



# NORTH RINN 24-9

## CEMENTING

