

TABLE 1
FIELD DATA SUMMARY TABLE
NOBLE 100322
70 RANCH USX BB09-99HZ WELLHEAD, WELD COUNTY, COLORADO
REM # 36492

Sample ID	Sample Date	Depth (ft-bgs)	GPS Data Latitude/Longitude		VOC Concentration (ppm)
WH01@6	9/16/2024	6	40.420628	-104.448398	62.8
FLR01@4	9/16/2024	4	40.420629	-104.448424	5.8
WH01-N@4	9/16/2024	4	40.420643	-104.448397	102.3
WH01-E@4	9/16/2024	4	40.420628	-104.448374	32.6
WH01-S@4	9/16/2024	4	40.420614	-104.448399	1.4

1. Global Positioning System (GPS) data is provided in decimal degrees using North American Datum (NAD) 83 UTMZone 13 North.

2. Volatile organic compound (VOC) concentrations are measured in the field using a photoionization detector (PID).

ppm - Parts per million

ft-bgs - feet below ground surface

TABLE 2
SUMMARY OF VOLATILE ORGANIC SOIL CHEMISTRY DATA
NOBLE 100322
70 RANCH USX BB09-99HZ WELLHEAD, WELD COUNTY, COLORADO
REM # 36492

Sample ID	Sample Date	Depth (ft-bgs)	Benzene (mg/kg)	Toluene (mg/kg)	Ethyl-Benzene (mg/kg)	Xylenes (mg/kg)	1,2,4-Trimethyl-Benzene (mg/kg)	1,3,5-Trimethyl-Benzene (mg/kg)	Naphthalene (mg/kg)	TPH (mg/kg)	TPH GRO (mg/kg)	TPH DRO (mg/kg)	TPH ORO (mg/kg)
ECMC Table 915-1 Limits (Residential SSL)			1.2	490	5.8	58	30	27	2	500	500**		
ECMC Table 915-1 Limits (Protection of Groundwater SSL)			0.0026	0.69	0.78	9.9	0.0081	0.0087	0.0038	500	500**		
FLR01@4	9/16/2024	4	<0.00200	<0.00200	<0.00200	<0.00200	<0.00200	<0.00200	<0.002	0.383	0.383	<25.0	<100
WH01-N@4	9/16/2024	4	<0.00200	<0.00200	<0.00200	<0.00200	<0.00200	<0.00200	<0.002	<125.200	<0.200	<25.0	<100

1. Grey highlighted soil analytical values indicate result is less than laboratory reporting limit

2. ** Summation of GRO+DRO+ORO must be less than 500 mg/kg

ft-bgs - feet below ground surface

mg/kg - milligrams per kilogram

TABLE 3
SUMMARY OF POLYCYCLIC AROMATIC HYDROCARBON SOIL CHEMISTRY DATA
NOBLE 100322
70 RANCH USX BB09-99HZ WELLHEAD, WELD COUNTY, COLORADO
REM # 36492

Sample ID	Sample Date	Depth (ft-bgs)	Acenaphthene (mg/kg)	Anthracene (mg/kg)	Benzo (a) Anthracene (mg/kg)	Benzo (a) Pyrene (mg/kg)	Benzo (b) Fluoranthene (mg/kg)	Benzo (k) Fluoranthene (mg/kg)	Chrysene (mg/kg)	Dibenzo (a,h) Anthracene (mg/kg)	Fluoranthene (mg/kg)	Fluorene (mg/kg)	Indeno (1,2,3-cd) Pyrene (mg/kg)	Pyrene (mg/kg)	1-Methyl - Naphthalene (mg/kg)	2-Methyl- Naphthalene (mg/kg)
ECMC Table 915-1 Limits (Residential SSL)			360	1800	1.1	0.11	1.1	11	110	0.11	240	240	1.1	180	18	24
ECMC Table 915-1 Limits (Protection of Groundwater SSL)			0.55	5.8	0.011	0.24	0.3	2.9	9	0.096	8.9	0.54	0.98	1.3	0.006	0.019
FLR01@4	9/16/2024	4	<0.020	<0.020	<0.005	<0.020	<0.020	<0.020	<0.020	<0.020	<0.020	0.055	<0.020	0.024	0.012	0.014
WH01-N@4	9/16/2024	4	<0.020	<0.020	<0.005	<0.020	<0.020	<0.020	<0.020	<0.020	<0.020	<0.020	<0.020	<0.020	<0.002	<0.002

1. RED - Above ECMC Table 915-1 Standards
 2. Blue highlighted soil analytical values indicate an exceedance of the referenced soil screening level (SSL)
 3. Grey highlighted soil analytical values indicate result is less than laboratory reporting limit
- ft-bgs - feet below ground surface
mg/kg - milligrams per kilogram

TABLE 4
SUMMARY OF SOIL SUITABILITY FOR RECLAMATION
NOBLE 100322
70 RANCH USX BB09-99HZ WELLHEAD, WELD COUNTY, COLORADO
REM # 36492

Sample ID	Sample Date	Depth (ft-bgs)	pH (Standard Units)	EC (mmhos/cm)	SAR (Standard Units)	Boron (mg/L)
ECMC Table 915-1 Soil Suitability Limits			6 - 8.3	<4	<6	2
FLR01@4	9/16/2024	4	8.39	0.222	0.182	<0.100
WH01-N@4	9/16/2024	4	8.31	0.220	0.606	<0.101

1. **RED** - Above ECMC Table 915-1 Standards

2. Grey highlighted soil analytical values indicate result is less than laboratory reporting limit

ft-bgs - feet below ground surface

EC - Electrical Conductivity

SAR - Sodium adsorption ratio

mmhos/cm - millimhos per centimeter

mg/L - milligrams per liter

TABLE 5
SUMMARY OF METALS IN SOIL CHEMISTRY DATA
NOBLE 100322
70 RANCH USX BB09-99HZ WELLHEAD, WELD COUNTY, COLORADO
REM # 36492

Sample ID	Sample Date	Depth (ft-bgs)	Arsenic (mg/kg)	Barium (mg/kg)	Cadmium (mg/kg)	Chromium (VI) (mg/kg)	Copper (mg/kg)	Lead (mg/kg)	Nickel (mg/kg)	Selenium (mg/kg)	Silver (mg/kg)	Zinc (mg/kg)
ECMC Table 915-1 Limits (Residential SSL)			0.68	15000	71	0.3	3100	400	1500	390	390	23000
ECMC Table 915-1 Limits (Protection of Groundwater SSL)			0.29	82	0.38	0.00067	46	14	26	0.26	0.8	370
FLR01@4	9/16/2024	4	2.01	203	<0.0886	<0.244*	<8.86	34.6	3.49	<0.230	<0.0886	<32.8
WH01-N@4	9/16/2024	4	2.55	76.9	<0.0859	<0.244*	<8.59	5.98	2.86	<0.223	<0.0859	<31.8

1. **RED** - Above ECMC Table 915-1 Standards

2. Red & blue highlighted soil analytical values indicate an exceedance of the referenced soil screening level (SSL)

3. Grey highlighted soil analytical values indicate result is less than laboratory reporting limit

* Indicates laboratory reporting or minimum detection limit in excess of SSL

ft-bgs - feet below ground surface

mg/kg - milligrams per kilogram

TABLE 1
FIELD DATA SUMMARY TABLE
NOBLE 100322
70 RANCH USX BB09-99HZ, WELD COUNTY, COLORADO
REM # 36492

Sample ID	Sample Date	Depth	GPS Data		PDOP Value	VOC Concentration (ppm)
			Latitude	Longitude		
FL01-3.0	10/9/2024	3.0ft	40.420	-104.45	0.9	0.0
FL01RW-3.0	10/9/2024	3.0ft	40.4206367	-104.44840	1.0	0.3
FL02-3.0	10/9/2024	3.0ft	40.4201279	-104.44736	0.8	0.0
FL03-3.0	10/9/2024	3.0ft	40.4200166	-104.44639	0.8	0.3
FL04-3.0	10/9/2024	3.0ft	40.4198400	-104.44442	0.9	0.0
SEP01FL-3.0	10/9/2024	3.0ft	40.4203685	-104.44434	0.8	1.1

1. Global Positioning System (GPS) data is provided in decimal degrees using North American Datum (NAD) 83 UTMZone 13 North.

2. Volatile organic compound (VOC) concentrations are measured in the field using a photoionization detector (PID).

PDOP = Position Dilution of Precision

ppm = Parts per million

in. = Inches

ft. = Feet

bgs = Below ground surface

= Source material characterization sample, excavated and transported off site for disposal.

= Material excavated and transported off site for disposal.

TABLE 2
SUMMARY OF VOLATILE ORGANIC SOIL CHEMISTRY DATA
NOBLE 100322
70 RANCH USX BB09-99HZ, WELD COUNTY, COLORADO
REM # 36492

Sample ID	Sample Date	Depth (ft)	Benzene (mg/kg)	Toluene (mg/kg)	Ethyl-Benzene (mg/kg)	Xylenes (mg/kg)	1,2,4-Trimethyl-Benzene (mg/kg)	1,3,5-Trimethyl-Benzene (mg/kg)	Naphthalene (mg/kg)	TPH (mg/kg)	TPH GRO (mg/kg)	TPH DRO (mg/kg)	TPH ORO (mg/kg)
ECMC Table 915-1 Limits (Residential SSL)			1.2	490	5.8	58	30	27	2	500	500**		
ECMC Table 915-1 Limits (Protection of Groundwater SSL)			0.0026	0.69	0.78	9.9	0.0081	0.0087	0.0038	500	500**		
FL01RW - 3.0	10/09/2024	3	<0.0020	<0.0050	<0.0050	<0.010	<0.0050	<0.0050	<0.0038	<500	<0.50	<50	<50
FL02 - 3.0	10/09/2024	3	<0.0020	<0.0050	<0.0050	<0.010	<0.0050	<0.0050	<0.0038	<500	<0.50	<50	<50
FL03 - 3.0	10/09/2024	3	<0.0020	<0.0050	<0.0050	<0.010	<0.0050	<0.0050	<0.0038	<500	<0.50	<50	<50
FL04 - 3.0	10/09/2024	3	<0.0020	<0.0050	<0.0050	<0.010	<0.0050	<0.0050	<0.0038	<500	<0.50	<50	<50

1. Bold values exceed the ECMC Table 915-1 limit(s)
 2. Red & blue highlighted soil analytical values indicate an exceedance of the referenced soil screening level (SSL)
 3. * Indicates laboratory minimum detection limit in excess of SSL
 4. ** Summation of GRO+DRO+ORO must be less than 500 mg/kg
- NA - Not analyzed

= Source material characterization sample, excavated and transported off site for disposal.

= Material excavated and transported off site for disposal.

TABLE 3
SUMMARY OF POLYCYCLIC AROMATIC HYDROCARBON SOIL CHEMISTRY DATA
NOBLE 100322
70 RANCH USX BB09-99HZ, WELD COUNTY, COLORADO
REM # 36492

Sample ID	Sample Date	Depth (ft)	Acenaphthene (mg/kg)	Anthracene (mg/kg)	Benzo (a) Anthracene (mg/kg)	Benzo (a) Pyrene (mg/kg)	Benzo (b) Fluoranthene (mg/kg)	Benzo (k) Fluoranthene (mg/kg)	Chrysene (mg/kg)	Dibenzo (a,h) Anthracene (mg/kg)	Fluoranthene (mg/kg)	Fluorene (mg/kg)	Indeno (1,2,3-cd) Pyrene (mg/kg)	Pyrene (mg/kg)	1-Methyl - Naphthalene (mg/kg)	2-Methyl- Naphthalene (mg/kg)
ECMC Table 915-1 Limits (Residential SSL)			360	1800	1.1	0.11	1.1	11	110	0.11	240	240	1.1	180	18	24
ECMC Table 915-1 Limits (Protection of Groundwater SSL)			0.55	5.8	0.011	0.24	0.3	2.9	9	0.096	8.9	0.54	0.98	1.3	0.006	0.019
FL01RW - 3.0	10/09/2024	3	<0.00500	<0.00500	<0.00500	<0.00500	<0.00500	<0.00500	<0.00500	<0.00500	<0.00500	<0.00500	<0.00500	<0.00500	<0.00500	<0.00500
FL02 - 3.0	10/09/2024	3	<0.00500	<0.00500	<0.00500	<0.00500	<0.00500	<0.00500	<0.00500	<0.00500	<0.00500	<0.00500	<0.00500	<0.00500	<0.00500	<0.00500
FL03 - 3.0	10/09/2024	3	<0.00500	<0.00500	<0.00500	<0.00500	<0.00500	<0.00500	<0.00500	<0.00500	<0.00500	<0.00500	<0.00500	<0.00500	<0.00500	<0.00500
FL04 - 3.0	10/09/2024	3	<0.00500	0.0107	0.0229	0.0128	0.0192	0.00796	0.0217	<0.00500	0.0495	<0.00500	0.0102	0.0431	<0.00500	<0.00500

1. Bold values exceed the ECMC Table 915-1 limit(s)

2. Red & blue highlighted soil analytical values indicate an exceedance of the referenced soil screening level (SSL)

3. * Indicates laboratory minimum detection limit in excess of SSL

NA - Not analyzed

 = Source material characterization sample, excavated and transported off site for disposal.

 = Material excavated and transported off site for disposal.

TABLE 4
SUMMARY OF SOIL SUITABILITY FOR RECLAMATION
NOBLE 100322
70 RANCH USX BB09-99HZ, WELD COUNTY, COLORADO
REM # 36492

Sample ID	Sample Date	Depth (ft)	pH (Standard Units)	EC (mmhos/cm)	SAR (Standard Units)	Boron (mg/L)
ECMC Table 915-1 Soil Suitability Limits			6 - 8.3	<4	<6	2
FLO1RW - 3.0	10/09/2024	3	8.72	0.103	0.249	<2.00
FLO2 - 3.0	10/09/2024	3	6.79	0.271	0.444	<2.00
FLO3 - 3.0	10/09/2024	3	8.45	0.153	0.42	<2.00
FLO4 - 3.0	10/09/2024	3	6.71	0.0744	0.0702	<2.00
Maximum Root Background Concentration (0 - 3 ft)			NA	NA	NA	NA
Average Root Background Concentration (0 - 3 ft)			NA	NA	NA	NA
Maximum Background Concentration			NA	NA	NA	NA
Average Background Concentration			NA	NA	NA	NA

1. Bold faced values exceed the ECMC Table 915-1 limit(s)
2. Blue highlighted soil analytical values indicate a regulatory exceedance

NA - Not analyzed

= Source material characterization sample, excavated and transported off site for disposal.
 = Material excavated and transported off site for disposal.

TABLE 5
SUMMARY OF METALS IN SOIL CHEMISTRY DATA
NOBLE 100322
70 RANCH USX BB09-99HZ, WELD COUNTY, COLORADO
REM # 36492

Sample ID	Sample Date	Depth (ft)	Arsenic (mg/kg)	Barium (mg/kg)	Cadmium (mg/kg)	Chromium (VI) (mg/kg)	Copper (mg/kg)	Lead (mg/kg)	Nickel (mg/kg)	Selenium (mg/kg)	Silver (mg/kg)	Zinc (mg/kg)
ECMC Table 915-1 Limits (Residential SSL)			0.68	15000	71	0.3	3100	400	1500	390	390	23000
ECMC Table 915-1 Limits (Protection of Groundwater SSL)			0.29	82	0.38	0.00067	46	14	26	0.26	0.8	370
FL01RW - 3.0	10/09/2024	3	1.69	54.9	<0.200	<0.30	2.18	6.08	2.02	<0.260	<0.0200	8.76
FL02 - 3.0	10/09/2024	3	1.75	33.9	<0.200	<0.30	6.81	3.68	4.68	<0.260	0.0763	16.5
FL03 - 3.0	10/09/2024	3	3.06	67.4	<0.200	<0.30	2.76	4.54	3.03	0.334	<0.0200	12.2
FL04 - 3.0	10/09/2024	3	2.22	34.3	<0.200	<0.30	2.77	3.64	2.39	<0.260	<0.0200	10.2
Maximum Root Zone Background Concentration (0 - 3 ft)			NA	NA	NA	NA	NA	NA	NA	NA	NA	NA
125% Average Root Zone Background Concentration (0 - 3 ft)			NA	NA	NA	NA	NA	NA	NA	NA	NA	NA
Maximum Background Concentration			NA	NA	NA	NA	NA	NA	NA	NA	NA	NA
125% Average Background Concentration			NA	NA	NA	NA	NA	NA	NA	NA	NA	NA

1. Bold values exceed the ECMC Table 915-1 limit(s)

2. Red & blue highlighted soil analytical values indicate an exceedance of the referenced soil screening level (SSL)

* Indicates laboratory minimum detection limit in excess of SSL

NA - Not analyzed

= Source material characterization sample, excavated and transported off site for disposal.

= Material excavated and transported off site for disposal.

70 Ranch USX BB09-99HZ Flowline

NWNW Sec. 9, T5N, R63W
40.419840, -104.444417
API #: 428526
Remediation Project #: 36492
Fremont No. C024-232

Legend

- Impacted Soil Sample Location
- ⊙ Soil Sample Location
- Proposed BKG Sample Locations

Proposed
Excavation:
10'x10'x5' deep
(not to scale)

Proposed
Excavation:
10'x10'x4' deep
(not to scale)

FL01RW-3.0

FL01-3.0

FL02-3.0

FL03-3.0

SEP01FL-3.0

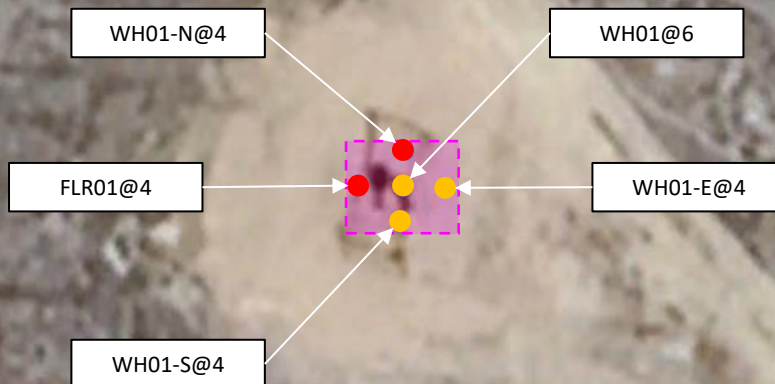
FL04-3.0




Description:

FL04 sample point.

- Field Screening Sample (Approximate)
- Laboratory Sample (Approximate)
- Excavation Extent (Approximate)



90 ft

Project No:	Historic Release Location 70 Ranch USX BB09-99HZ Wellhead NWNW Sec. 9 5N63W 6 PM		FIGURE
Drawn By: LB			1843 Sunlight Dr. Longmont, CO 80504 303.378.4036
Date: 10/16/2024			2

70 Ranch USX BB09-99HZ Wellhead Photographic Log



70 Ranch USX BB09-99HZ Wellhead Photographic Log



70 Ranch USX BB09-99HZ Wellhead Photographic Log

