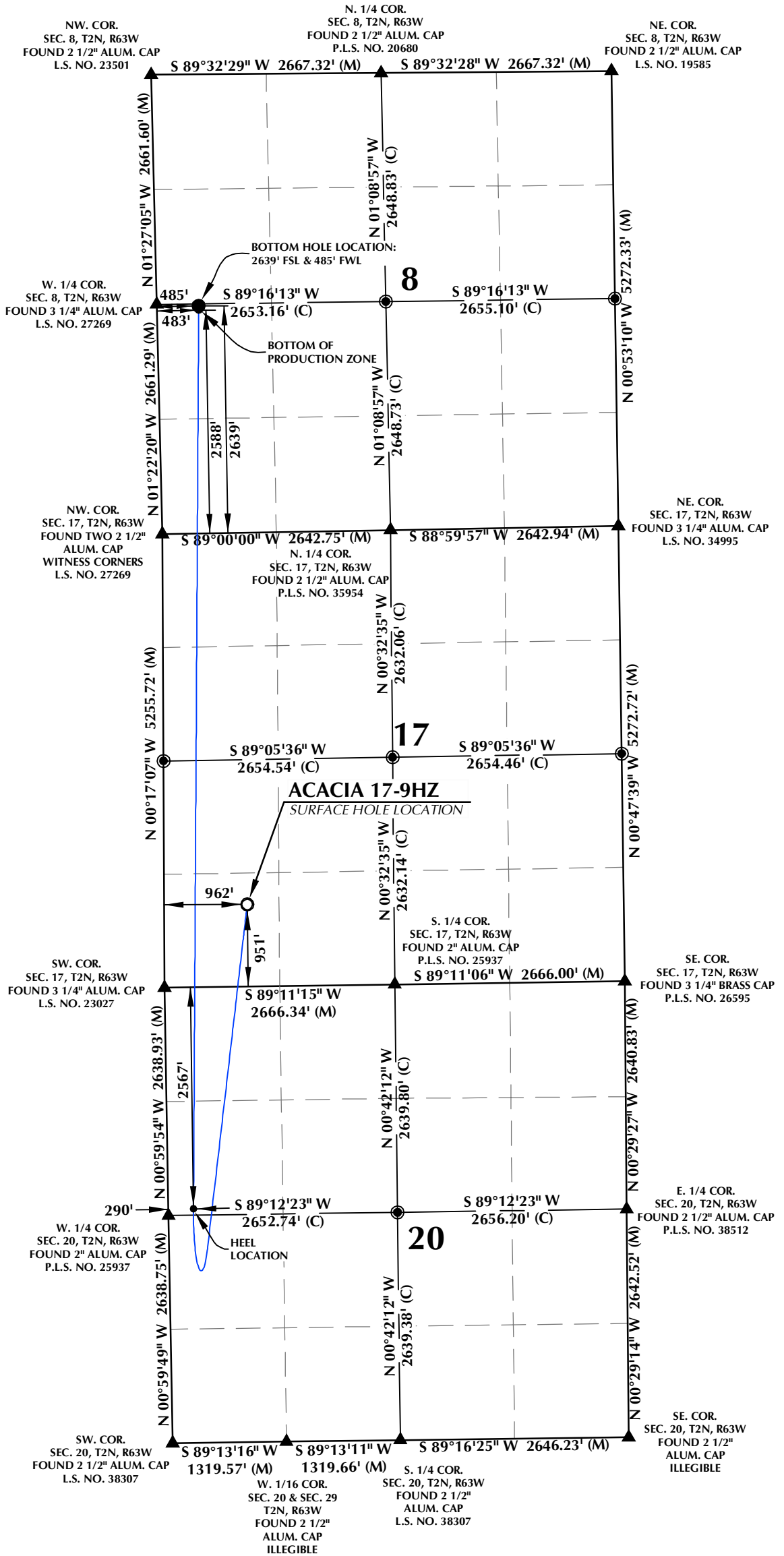


T2N, R63W



SURFACE HOLE LOCATION: NAD 83
 GROUND ELEVATION= 4859.7'
 LATITUDE= 40.133749°
 LONGITUDE= -104.467449°
 LATITUDE= 40°08'01.498"
 LONGITUDE= -104°28'02.817"

HEEL LOCATION: NAD 83
 LATITUDE= 40.124086°
 LONGITUDE= -104.469825°
 LATITUDE= 40°07'26.708"
 LONGITUDE= -104°28'11.368"

BOTTOM OF PRODUCTION ZONE: NAD 83
 LATITUDE= 40.152671°
 LONGITUDE= -104.469176°
 LATITUDE= 40°09'09.616"
 LONGITUDE= -104°28'09.032"

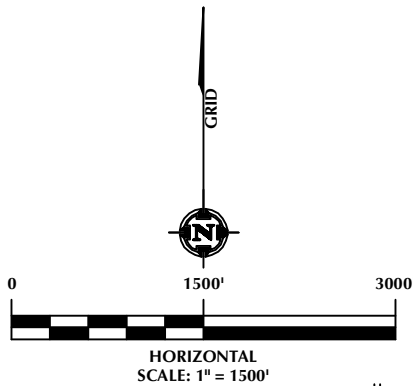
BOTTOM HOLE LOCATION: NAD 83
 LATITUDE= 40.152811°
 LONGITUDE= -104.469172°
 LATITUDE= 40°09'10.120"
 LONGITUDE= -104°28'09.021"

CERTIFICATE OF SURVEYOR:

THIS IS TO CERTIFY THAT THE ABOVE PLAN WAS PREPARED FROM FIELD NOTES OF ACTUAL SURVEYS MADE BY ME OR UNDER MY SUPERVISION AND THAT THE SAME ARE TRUE AND CORRECT TO THE BEST OF MY KNOWLEDGE AND BELIEF. THIS CERTIFICATE DOES NOT REPRESENT A LAND SURVEY THAT OR IMPROVEMENT SURVEY PLAN AS DEFINED BY C.R.S. 38-51-102 AND CANNOT BE RELIED UPON TO DETERMINE OWNERSHIP.

Randall K. French
 RANDALL K. FRENCH
 PROFESSIONAL LAND SURVEYOR
 COLORADO REGISTRATION NUMBER 38512
 10/4/24

NOTICE:
 ACCORDING TO COLORADO STATE LAW YOU MUST COMMENCE A LEGAL ACTION BASED UPON ANY DEFECT IN THIS SURVEY WITHIN THREE YEARS FROM YOUR FIRST DISCOVERY OF SUCH DEFECT. IN NO EVENT MAY ANY ACTION BE BASED UPON ANY DEFECT IN THIS SURVEY BE COMMENCED MORE THAN TEN YEARS FROM THE DATE ON THE CERTIFICATION SHOWN HEREON.



NOTES:

- ▲ INDICATES SECTION CORNER.
- INDICATES CALCULATED CORNER.
- ELEVATION BASED ON NAVD88 (GEOID18).
- BASIS OF BEARINGS DERIVED FROM COLORADO COORDINATE SYSTEM OF 1983, NORTH ZONE.
- ALL MEASURED DISTANCES ARE GRID.
- COMBINED SCALE FACTOR: .99973309 CALCULATED FROM THE E. 1/4 CORNER OF SECTION 20, T2N, R63W.
- OPERATOR: ROB WILSON / PDOP = 1.6
- WELL FOOTAGES ARE MEASURED AT RIGHT ANGLES TO THE SECTION LINES.

WELL PAD - ACACIA 13-17HZ

ACACIA 17-9HZ
 WELL LOCATION CERTIFICATE
 951' FSL & 962' FWL (SWSW) (SURFACE HOLE LOCATION)
 LOCATED IN SECTION 17
 2567' FNL & 290' FWL (SNNW) (HEEL LOCATION)
 LOCATED IN SECTION 20
 2588' FSL & 483' FWL (NWSW) (BOTTOM OF PRODUCTION ZONE)
 2639' FSL & 485' FWL (NWSW) (BOTTOM HOLE LOCATION)
 LOCATED IN SECTION 8
 T2N, R63W, 6TH P.M.
 WELD COUNTY, COLORADO

**Kerr-McGee Oil &
 Gas Onshore LP**
 1099 18th Street
 Denver, Colorado 80202



CONSULTING, LLC

SHERIDAN OFFICE
 1095 Saberton Avenue
 Sheridan, Wyoming 82801
 Phone 307-674-0609

LOVELAND OFFICE
 6706 North Franklin Avenue
 Loveland, Colorado 80538
 Phone 970-776-4331

DRAFTED BY:	SJM	CHECKED BY:	RKF
DATE DRAFTED:	8/11/23	DATE SURVEYED:	1/30/24
REVISED:	10/4/24	FILE NAME:	22-135