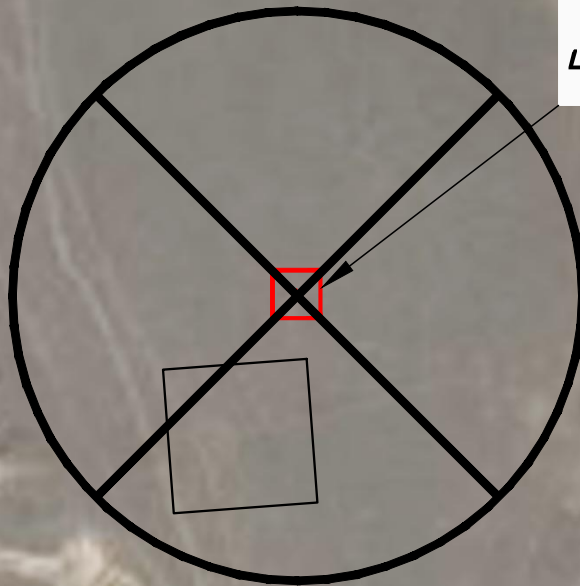


**VIEW NORTH**

**REFERENCE AREA  
CENTER STAKE  
(DO NOT DISTURB)  
LATITUDE (NAD 83)  
NORTH 38.896177 DEG.  
LONGITUDE (NAD 83)  
WEST 102.138103 DEG.**




**VIEW WEST**

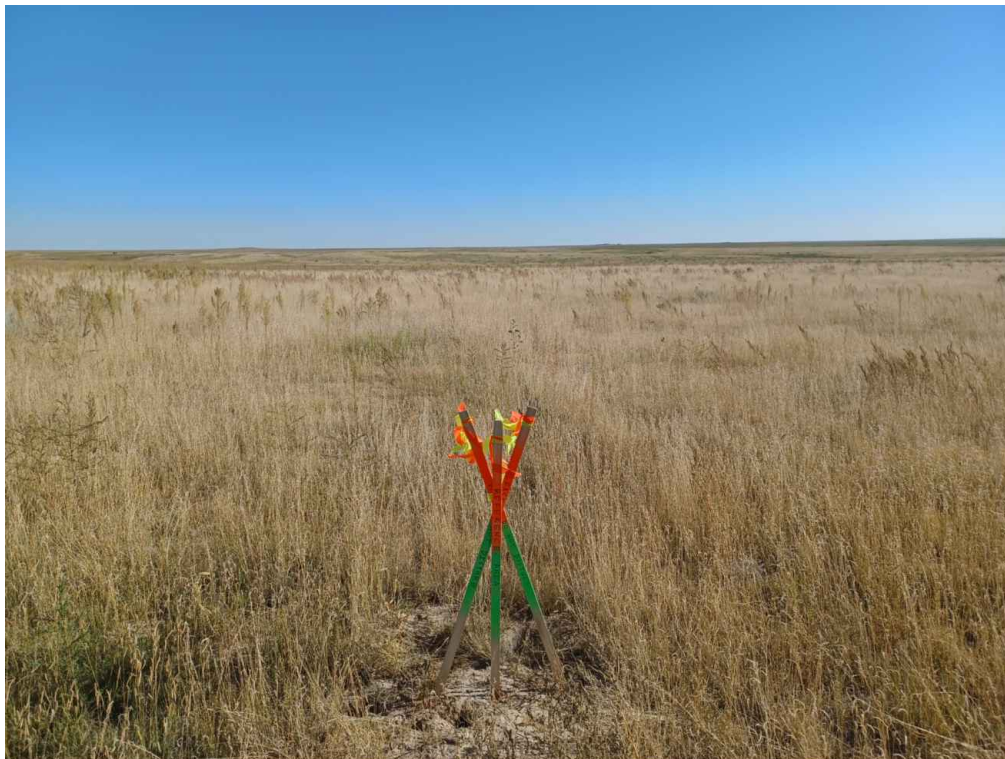
**VIEW EAST**

**VIEW SOUTH**

**AERIAL PHOTO SOURCE**  
AERIAL PHOTOGRAMMETRY  
TAKEN FROM BING IMAGES

**#1 WAVETECH HOWARD 22-29**

 (307) 362-5028 1414 ELK ST., ROCK SPRINGS, WY 82901		<b>AERIAL LOCATION PHOTO</b>	
		<b>WAVETECH HELIUM, INC. #1 WAVETECH HOWARD 22-29 SENW, SECTION 29, T. 13 S., R. 42 W., 6th P.M., CHEYENNE COUNTY, COLORADO</b>	
<b>DRAWN: 11/16/22 - DWB/JMB</b>	<b>SCALE: NONE</b>		
<b>REVISED: 9/4/24 - JMB</b>	<b>DRG JOB No. 22300</b>		
<b>ADDED PHOTOS</b>	<b>304b(9) Bii REF PIC SHEET 1 OF 4</b>		




**REFERENCE AREA LOOKING NORTH**  
**8/24/2023**



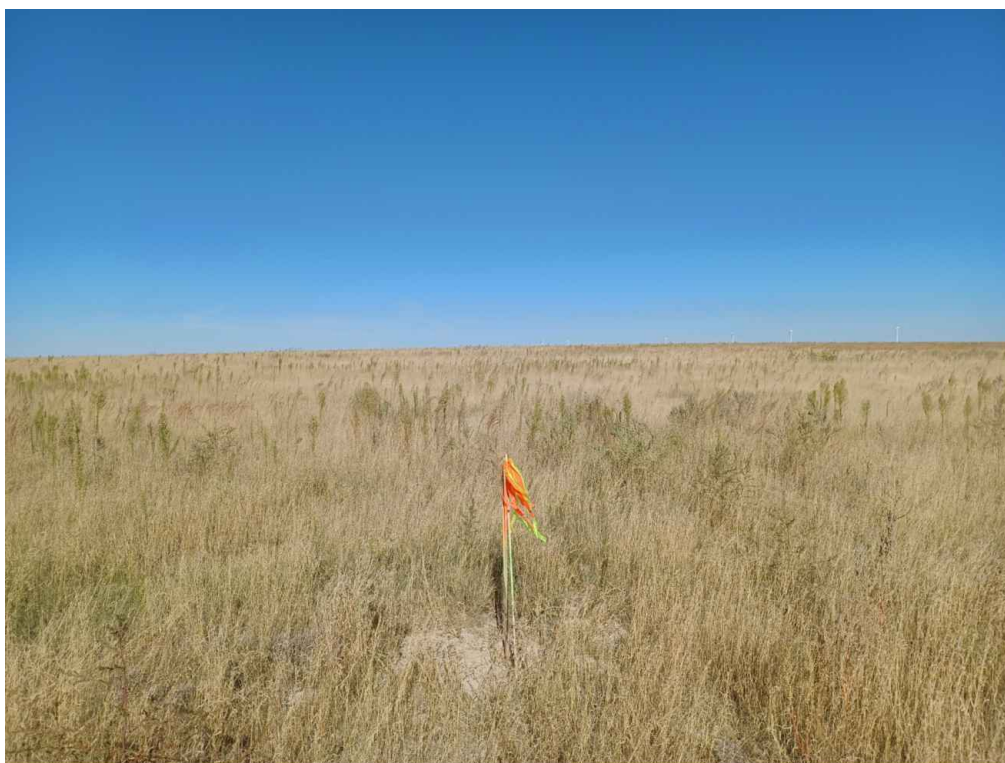
**REFERENCE AREA LOOKING EAST**  
**8/24/2023**

**#1 WAVETECH HOWARD 22-29**

 <b>DRG RIFFIN &amp; ASSOCIATES, INC.</b> <small>(307) 362-5028 1414 ELK ST., ROCK SPRINGS, WY 82901</small>		<b>REFERENCE AREA PHOTOS</b>	
		<b>WAVETECH HELIUM, INC.</b> <b>#1 WAVETECH HOWARD 22-29</b> <b>SENW, SECTION 29, T. 13 S., R. 42 W., 6th P.M.,</b> <b>CHEYENNE COUNTY, COLORADO</b>	
<b>DRAWN: 11/16/22 - DWB/JMB</b>	<b>SCALE: NONE</b>		
<b>REVISED: 9/4/24 - JMB</b>	<b>DRG JOB No. 22300</b>		
<b>ADDED PHOTOS</b>	<b>304b(9) Bii REF PIC SHEET 2 OF 4</b>		




**REFERENCE AREA LOOKING SOUTH**  
**8/24/2023**



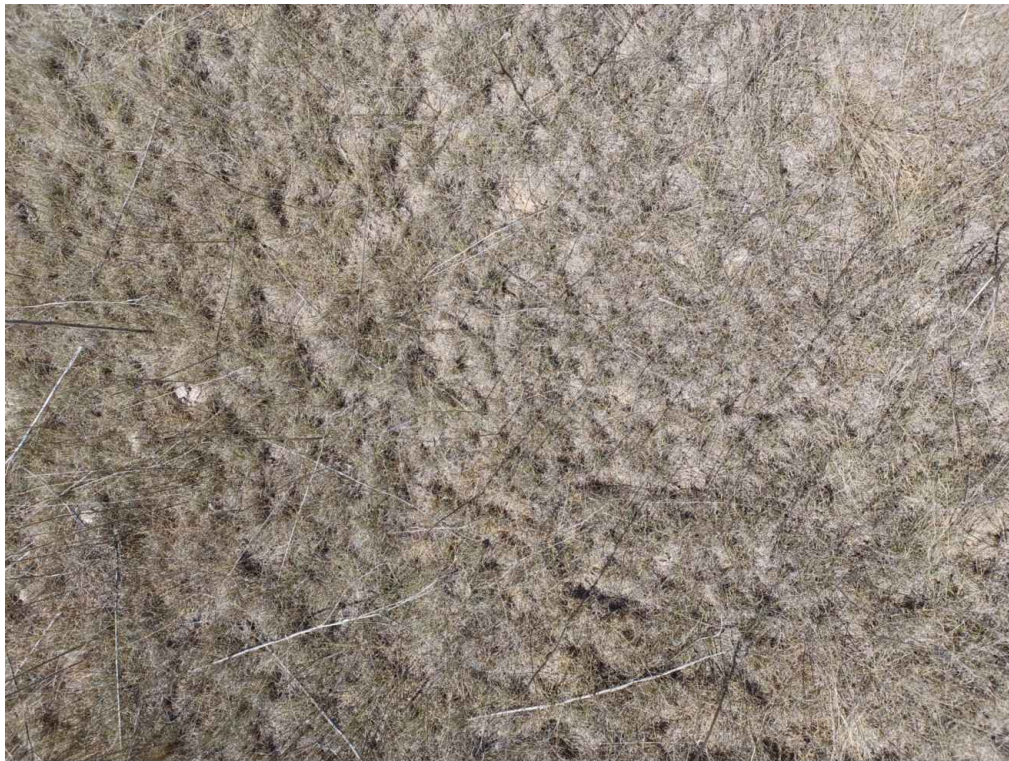
**REFERENCE AREA LOOKING WEST**  
**8/24/2023**

**#1 WAVETECH HOWARD 22-29**

 <b>DRG RIFFIN &amp; ASSOCIATES, INC.</b> <small>(307) 362-5028 1414 ELK ST., ROCK SPRINGS, WY 82901</small>		<b>REFERENCE AREA PHOTOS</b>	
		<b>WAVETECH HELIUM, INC.</b> <b>#1 WAVETECH HOWARD 22-29</b> <b>SENW, SECTION 29, T. 13 S., R. 42 W., 6th P.M.,</b> <b>CHEYENNE COUNTY, COLORADO</b>	
<b>DRAWN: 11/16/22 - DWB/JMB</b>	<b>SCALE: NONE</b>		
<b>REVISED: 9/4/24 - JMB</b>	<b>DRG JOB No. 22300</b>		
<b>ADDED PHOTOS</b>	<b>304b(9) Bii REF PIC SHEET 3 OF 4</b>		




**REFERENCE AREA GROUND**  
**8/22/2024**



**REFERENCE AREA GROUND**  
**8/22/2024**

**#1 WAVETECH HOWARD 22-29**

 <b>DRG RIFFIN &amp; ASSOCIATES, INC.</b> <small>(307) 362-5028 1414 ELK ST., ROCK SPRINGS, WY 82901</small>		<b>REFERENCE AREA PHOTOS</b>	
		<b>WAVETECH HELIUM, INC.</b> <b>#1 WAVETECH HOWARD 22-29</b> <b>SENW, SECTION 29, T. 13 S., R. 42 W., 6th P.M.,</b> <b>CHEYENNE COUNTY, COLORADO</b>	
<b>DRAWN: 11/16/22 - DWB/JMB</b>	<b>SCALE: NONE</b>		
<b>REVISED: 9/4/24 - JMB</b>	<b>DRG JOB No. 22300</b>		
<b>ADDED PHOTOS</b>	<b>304b(9) Bii REF PIC SHEET 4 OF 4</b>		