

UNGRADED ELEVATION: 3972.7'
 FINAL ELEVATION: 3971.7'
 AREA OF DISTURBANCE: 2.7± ACRES
 AREA OF WORKING PAD SURFACE: 2.1± ACRES

#1 WAVETECH HOWARD 22-29

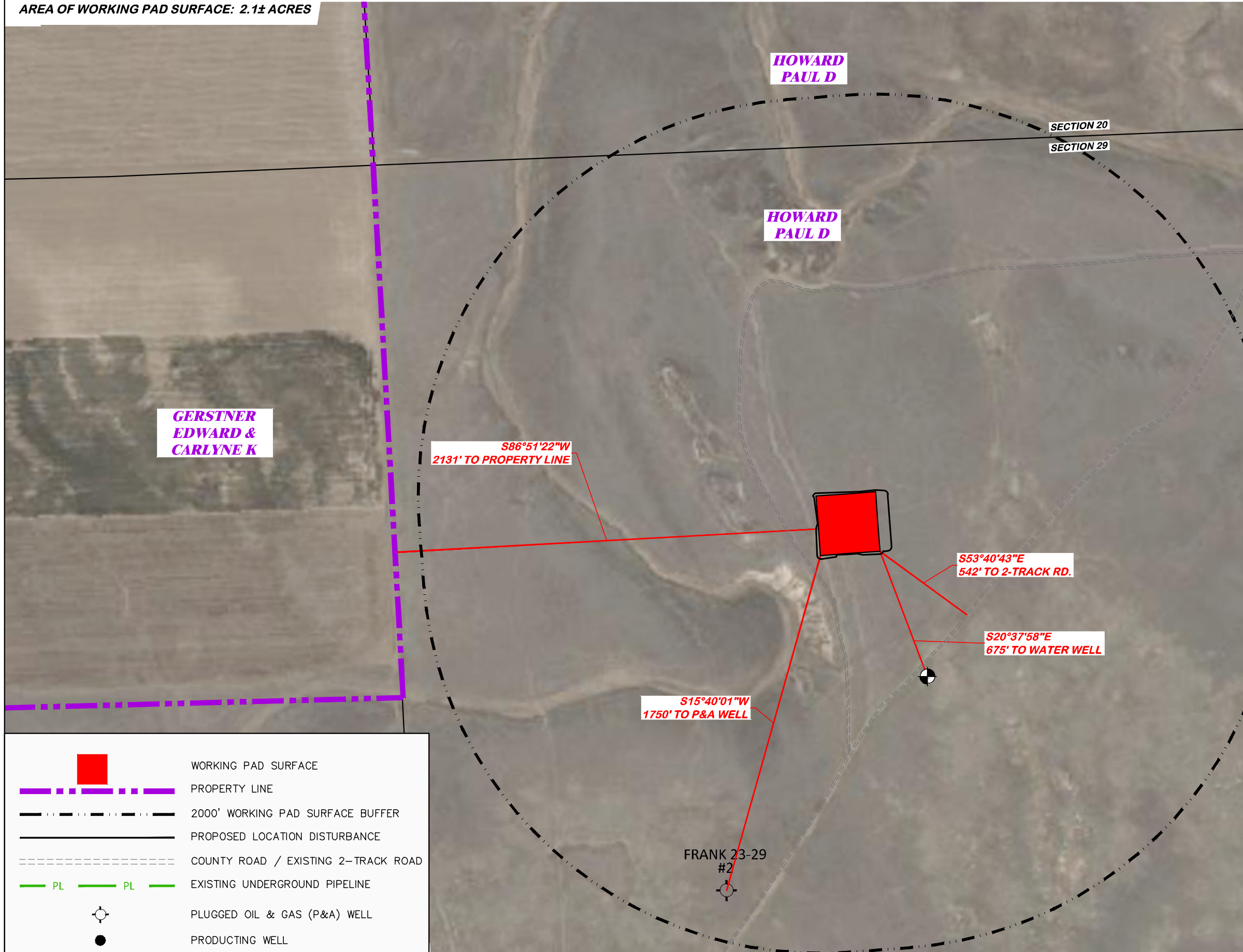
N

SCALE FEET
 BEFORE DIGGING
 CALL FOR
 UTILITY LINE LOCATION

PAD LOCATION:
 LAT: N 38.895378
 LONG: W 102.138554

LOCATION DRAWING

WAVETECH HELIUM, INC.
 #1 WAVETECH HOWARD 22-29
 SENW, SECTION 29, T. 13 S., R. 42 W., 6th P.M.,
 CHEYENNE COUNTY, COLORADO



GERSTNER
 EDWARD &
 CARLYNE K

HOWARD
 PAUL D

HOWARD
 PAUL D

FRANK 41-29
 #1

S86°51'22"W
 2131' TO PROPERTY LINE

S53°40'43"E
 542' TO 2-TRACK RD.

S20°37'58"E
 675' TO WATER WELL

S15°40'01"W
 1750' TO P&A WELL

FRANK 23-29
 #2

CO RD
 56

WORKING PAD SURFACE

PROPERTY LINE

2000' WORKING PAD SURFACE BUFFER

PROPOSED LOCATION DISTURBANCE

COUNTY ROAD / EXISTING 2-TRACK ROAD

EXISTING UNDERGROUND PIPELINE

PLUGGED OIL & GAS (P&A) WELL

PRODUCING WELL

WATER WELL

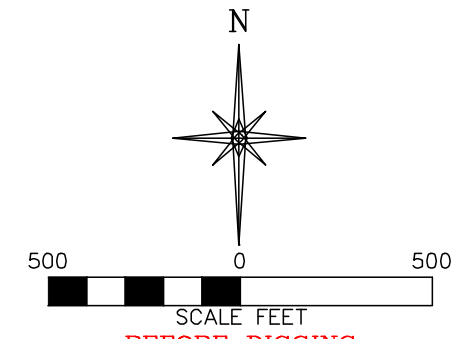
DRG RIFFIN & ASSOCIATES, INC.
 1414 ELK ST., ROCK SPRINGS, WY 82901
 (307) 862-5028

SCALE: 1" = 500'
 DRAWN: 11/16/22 - DWB/JMB
 REVISED: 12/5/2023 - DEH
 DRG JOB No. 22300
 304b(7)A LOC AERIAL
 UPDATED TABLE

LOCATION DRAWING FEATURES 304b(7)A	
FEATURE	DISTANCE
i BUILDING	5280' S
i BUILDING UNITS	5280' S
ii PUBLICLY MAINTAINED ROADS AND TRAILS	2886' E
iii FENCES	5280' E
iv ABOVE GROUND UTILITIES	5280' S
v RAILROADS	5280' S
vi PIPELINES	2575' NE
vii MINES	5280' SE
viii OIL AND GAS WELLS AND PRODUCTION FACILITIES	2445' NE
ix INJECTION WELLS	5280' SE
x PLUGGED OIL AND GAS WELLS	1750' SW
xi KNOWN WATER WELLS	675' SE
xii KNOWN SEWERS WITH MANHOLES	5280' S

UNGRADED ELEVATION: 3972.7'
 FINAL ELEVATION: 3971.7'
 AREA OF DISTURBANCE: 2.7± ACRES
 AREA OF WORKING PAD SURFACE: 2.1± ACRES

#1 WAVETECH HOWARD 22-29



PAD LOCATION:
 LAT: N 38.895378
 LONG: W 102.138554

GERSTNER
 EDWARD &
 CARLYNE K

HOWARD
 PAUL D

HOWARD
 PAUL D

FRANK 41-29
 #1

AG
 SMI

S86°51'22"W
 2131' TO PROPERTY LINE

S53°40'43"E
 542' TO 2-TRACK RD.

S20°37'58"E
 675' TO WATER WELL

S15°40'01"W
 1750' TO P&A WELL

FRANK 23-29
 #2

CORD
 56

	WORKING PAD SURFACE
	PROPERTY LINE
	2000' WORKING PAD SURFACE BUFFER
	PROPOSED LOCATION DISTURBANCE
	COUNTY ROAD / EXISTING 2-TRACK ROAD
	EXISTING UNDERGROUND PIPELINE
	PLUGGED OIL & GAS (P&A) WELL
	PRODUCING WELL
	WATER WELL

LOCATION DRAWING FEATURES 304b(7)A	
FEATURE	DISTANCE
i BUILDING	5280' S
i BUILDING UNITS	5280' S
ii PUBLICLY MAINTAINED ROADS AND TRAILS	2886' E
iii FENCES	5280' E
iv ABOVE GROUND UTILITIES	5280' S
v RAILROADS	5280' S
vi PIPELINES	2575' NE
vii MINES	5280' SE
viii OIL AND GAS WELLS AND PRODUCTION FACILITIES	2445' NE
ix INJECTION WELLS	5280' SE
x PLUGGED OIL AND GAS WELLS	1750' SW
xi KNOWN WATER WELLS	675' SE
xii KNOWN SEWERS WITH MANHOLES	5280' S

DRS RIFFIN & ASSOCIATES, INC.
 1414 ELK ST., ROCK SPRINGS, WY 82901
 (307) 862-5028

DRAWN: 11/16/22 - DWB/JMB
 REVISED: 12/5/2023 - DEH
 SCALE: 1" = 500'
 DRG JOB No. 22300
 304b(7)A LOC DWG

LOCATION DRAWING

WAVETECH HELIUM, INC.
 #1 WAVETECH HOWARD 22-29
 SENW, SECTION 29, T. 13 S., R. 42 W., 6th P.M.,
 CHEYENNE COUNTY, COLORADO

UPDATED TABLE