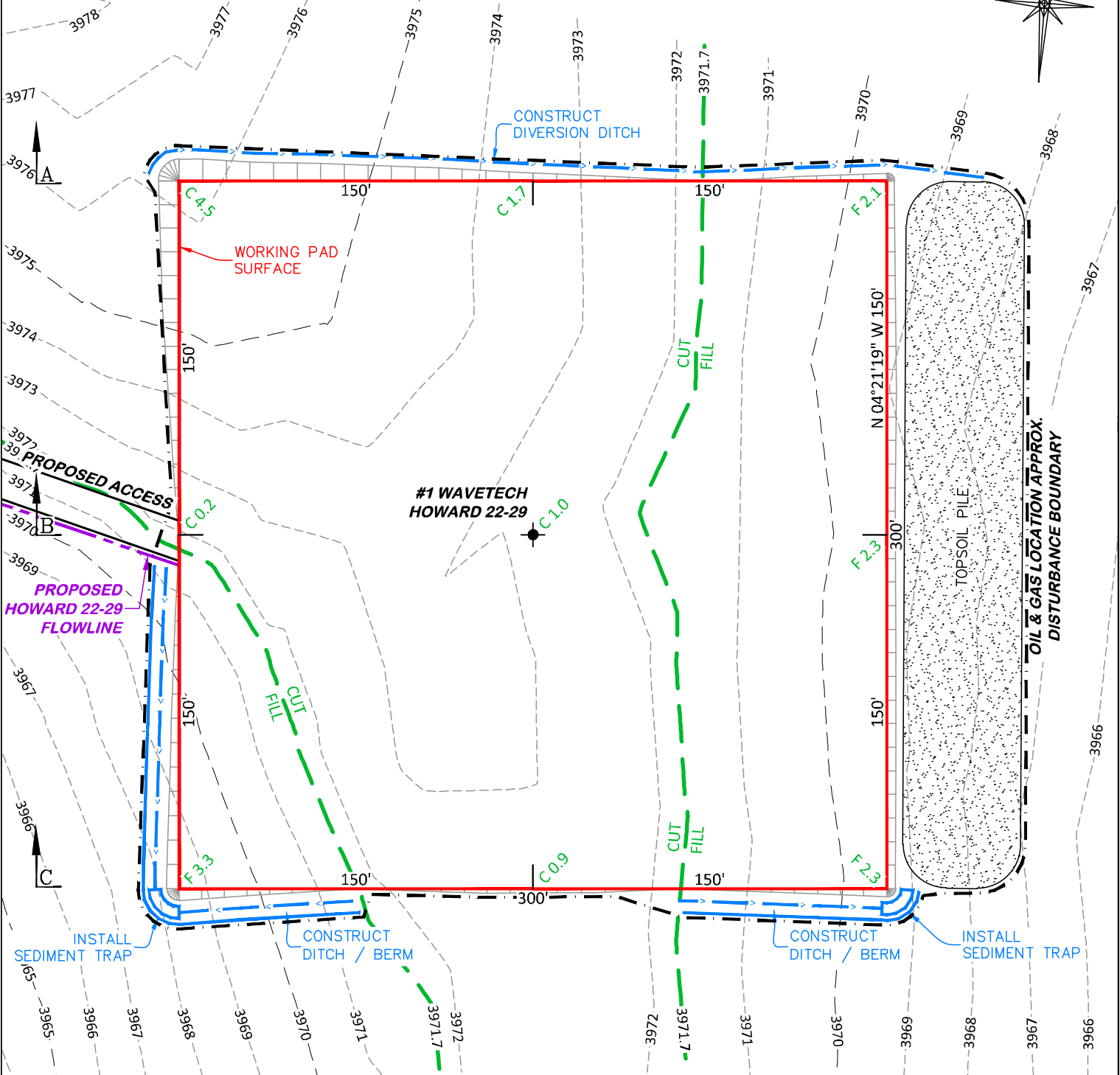


UNGRADED ELEVATION: 3972.7'
 FINAL ELEVATION: 3971.7'
 PROPOSED AREA OF DISTURBANCE: 2.7± ACRES
 AREA OF WORKING PAD SURFACE: 2.1± ACRES
 PROPOSED ACCESS DISTURBANCE: 5.4± ACRES



#1 WAVETECH HOWARD 22-29

NOTE: THE EARTH QUANTITIES ON THIS DRAWING ARE ESTIMATED AND THE USE OF SAID QUANTITIES IS AT THE RESPONSIBILITY OF THE USER.

SCALE FEET

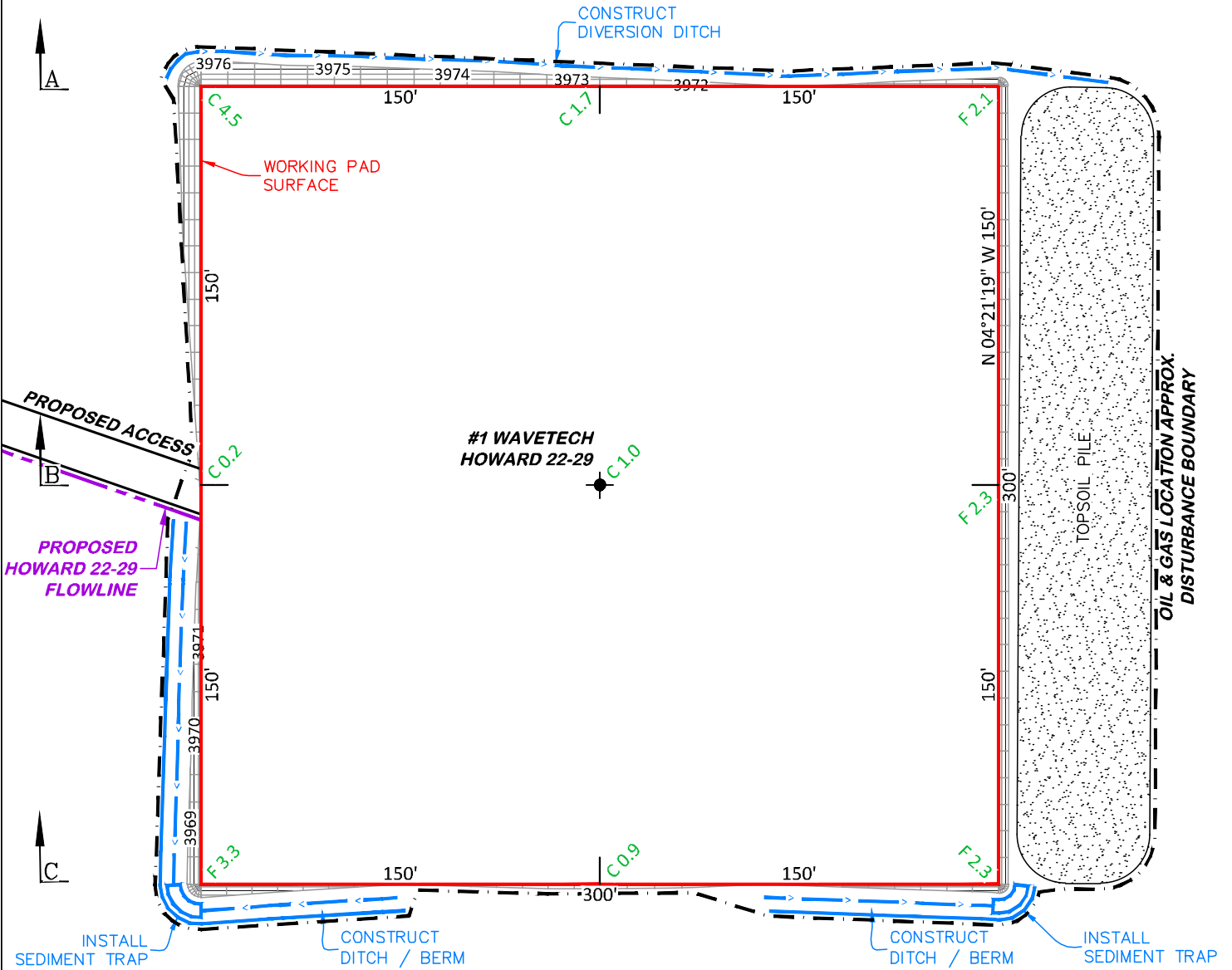
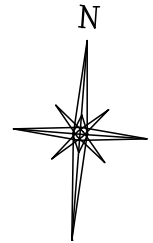
CONSTRUCTION LAYOUT DRAWING 1 OF 6
PLAN - PROPOSED GRADING
WAVETECH HELIUM, INC.
#1 WAVETECH HOWARD 22-29
SENW, SECTION 29, T. 13 S., R. 42 W., 6th P.M.,
CHEYENNE COUNTY, COLORADO

ESTIMATED EARTHWORK				
ITEM	CUT	FILL	TOPSOIL (6")	EXCESS
PAD	3,268 CY	1,523 CY	1,745 CY	0 CY
OTHER			433 CY	
TOTALS	3,268 CY	1,523 CY	2,178 CY	0 CY

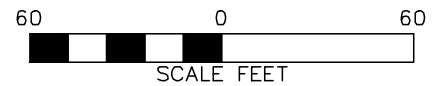
DRG RIFFIN & ASSOCIATES, INC.
 (307) 362-5028 1414 ELK ST., ROCK SPRINGS, WY 82901

DRAWN: 11/16/22 - DWB/JMB	SCALE: 1" = 60'
REVISED: 8/21/24 - JMB	DRG JOB No. 22300
ECMC REVISIONS	304b(7)Bi CONST

UNGRADED ELEVATION: 3972.7'
 FINAL ELEVATION: 3971.7'
 PROPOSED AREA OF DISTURBANCE: 2.7± ACRES
 AREA OF WORKING PAD SURFACE: 2.1± ACRES
 PROPOSED ACCESS DISTURBANCE: 5.4± ACRES



#1 WAVETECH HOWARD 22-29

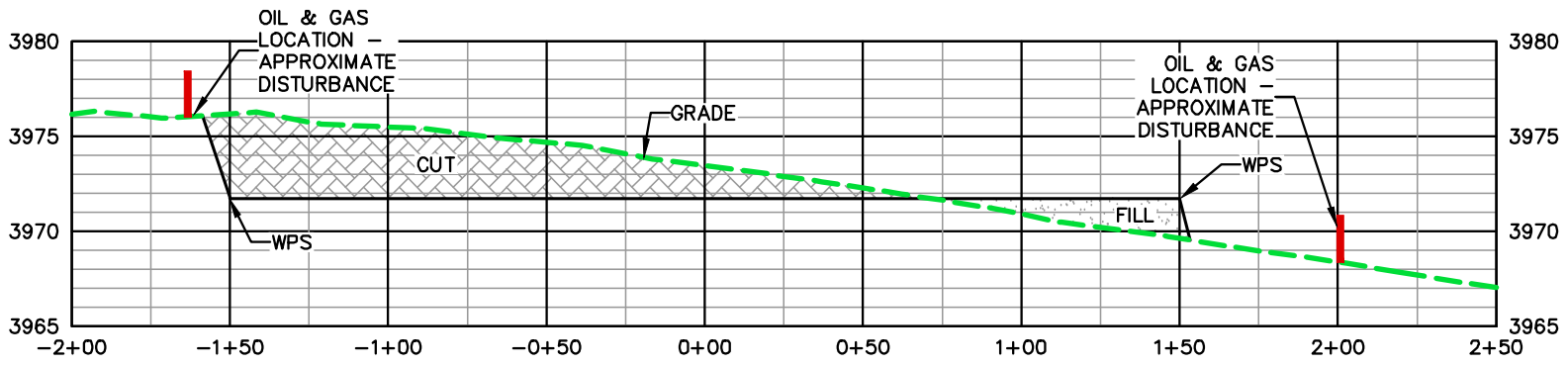


CONSTRUCTION LAYOUT DRAWING 3 OF 6

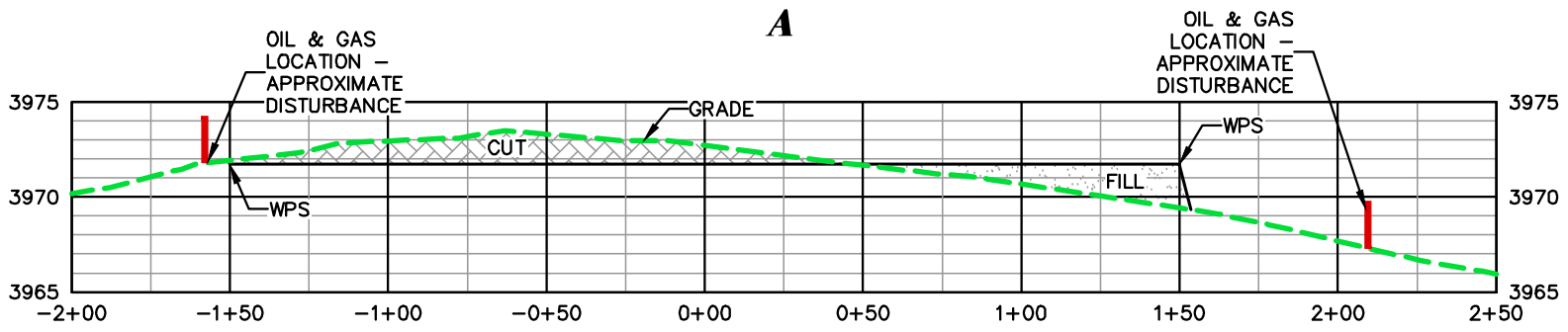
DRG RIFFIN & ASSOCIATES, INC.
 (307) 362-5028 1414 ELK ST., ROCK SPRINGS, WY 82901

PROPOSED PAD CONTOURS
WAVETECH HELIUM, INC.
#1 WAVETECH HOWARD 22-29
SENW, SECTION 29, T. 13 S., R. 42 W., 6th P.M.,
CHEYENNE COUNTY, COLORADO

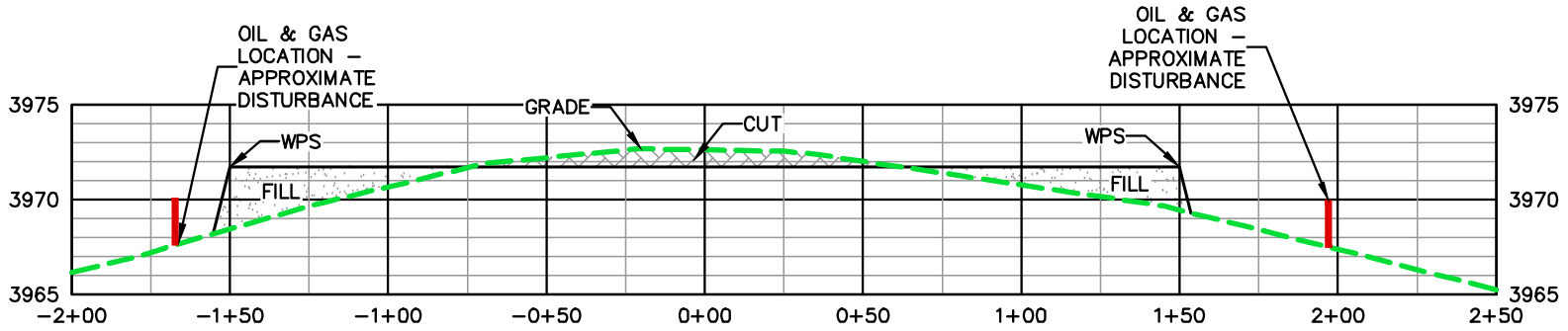
DRAWN: 11/16/22 - DWB/JMB	SCALE: 1" = 60'
REVISED: 8/21/24 - JMB	DRG JOB No. 22300
ECMC REVISIONS	304b(7)Bi DSGN CONT



A



B




C

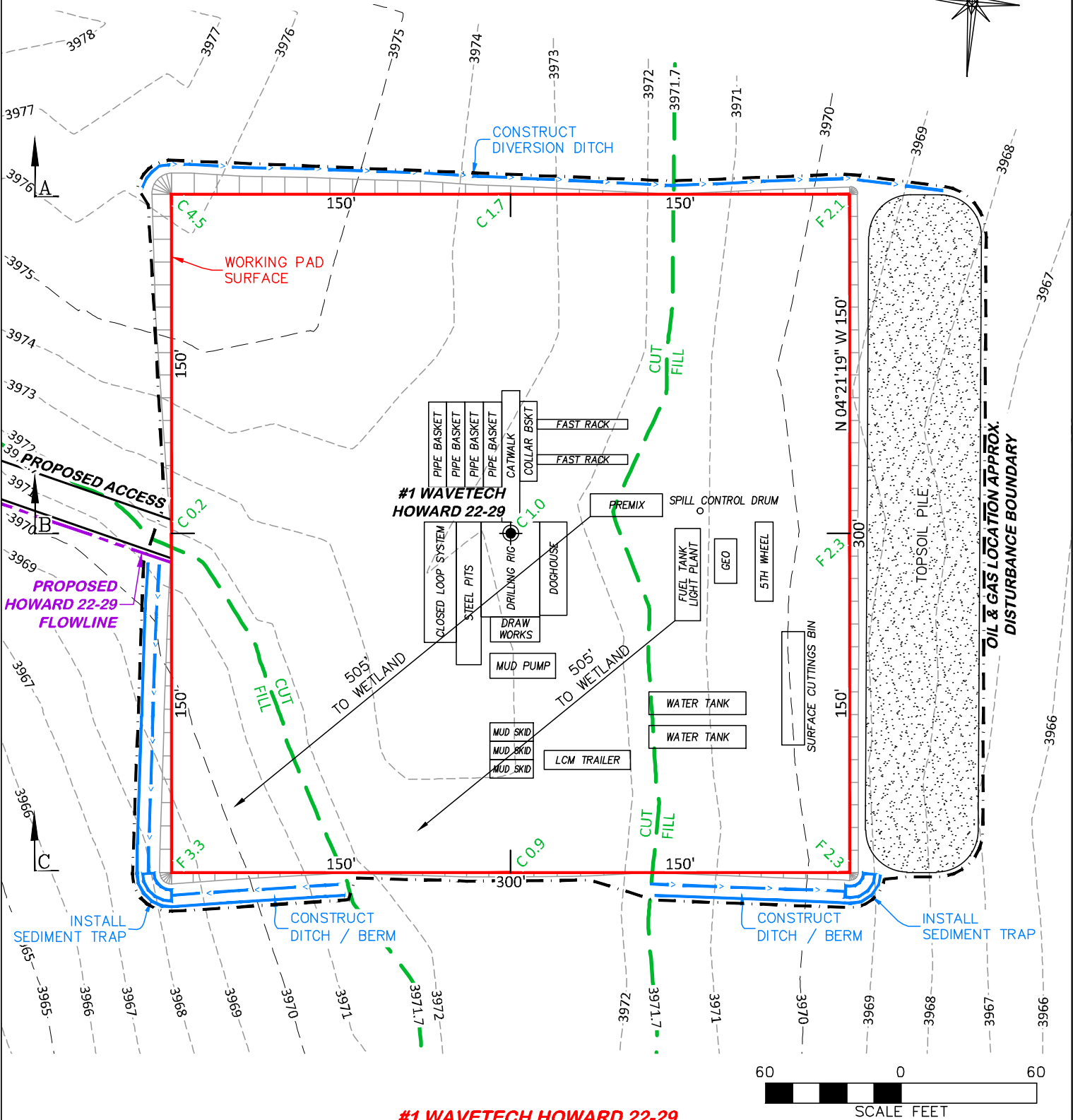
CUT SLOPES - 2:1

FILL SLOPES - 1.5:1

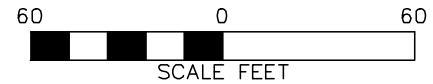
#1 WAVETECH HOWARD 22-29

 DRG RIFFIN & ASSOCIATES, INC. <small>(307) 362-5028 1414 ELK ST., ROCK SPRINGS, WY 82901</small>		CONSTRUCTION LAYOUT DRAWING 2 OF 6	
		CROSS-SECTIONS WAVETECH HELIUM, INC. #1 WAVETECH HOWARD 22-29 SENW, SECTION 29, T. 13 S., R. 42 W., 6th P.M., CHEYENNE COUNTY, COLORADO	
DRAWN: 11/16/22 - DWB/JMB	SCALE: H - 1" = 60' V - 1" = 10'		
REVISED: 8/21/24 - JMB	DRG JOB No. 22300		
ECMC REVISIONS	304b(7)Bi XSEC		

UNGRADED ELEVATION: 3972.7'
 FINAL ELEVATION: 3971.7'
 PROPOSED AREA OF DISTURBANCE: 2.7± ACRES
 AREA OF WORKING PAD SURFACE: 2.1± ACRES
 PROPOSED ACCESS DISTURBANCE: 5.4± ACRES



#1 WAVETECH HOWARD 22-29



DRG RIFFIN & ASSOCIATES, INC.
 (307) 362-5028 1414 ELK ST., ROCK SPRINGS, WY 82901

CONSTRUCTION LAYOUT DRAWING 4 OF 6

PRELIMINARY RIG LAYOUT DRAWING
WAVETECH HELIUM, INC.
#1 WAVETECH HOWARD 22-29
SENW, SECTION 29, T. 13 S., R. 42 W., 6th P.M.,
CHEYENNE COUNTY, COLORADO

DRAWN: 11/16/22 - DWB/JMB	SCALE: 1" = 60'
REVISED: 8/21/24 - JMB	DRG JOB No. 22300
ECMC REVISIONS	304b(7)Bii RIG

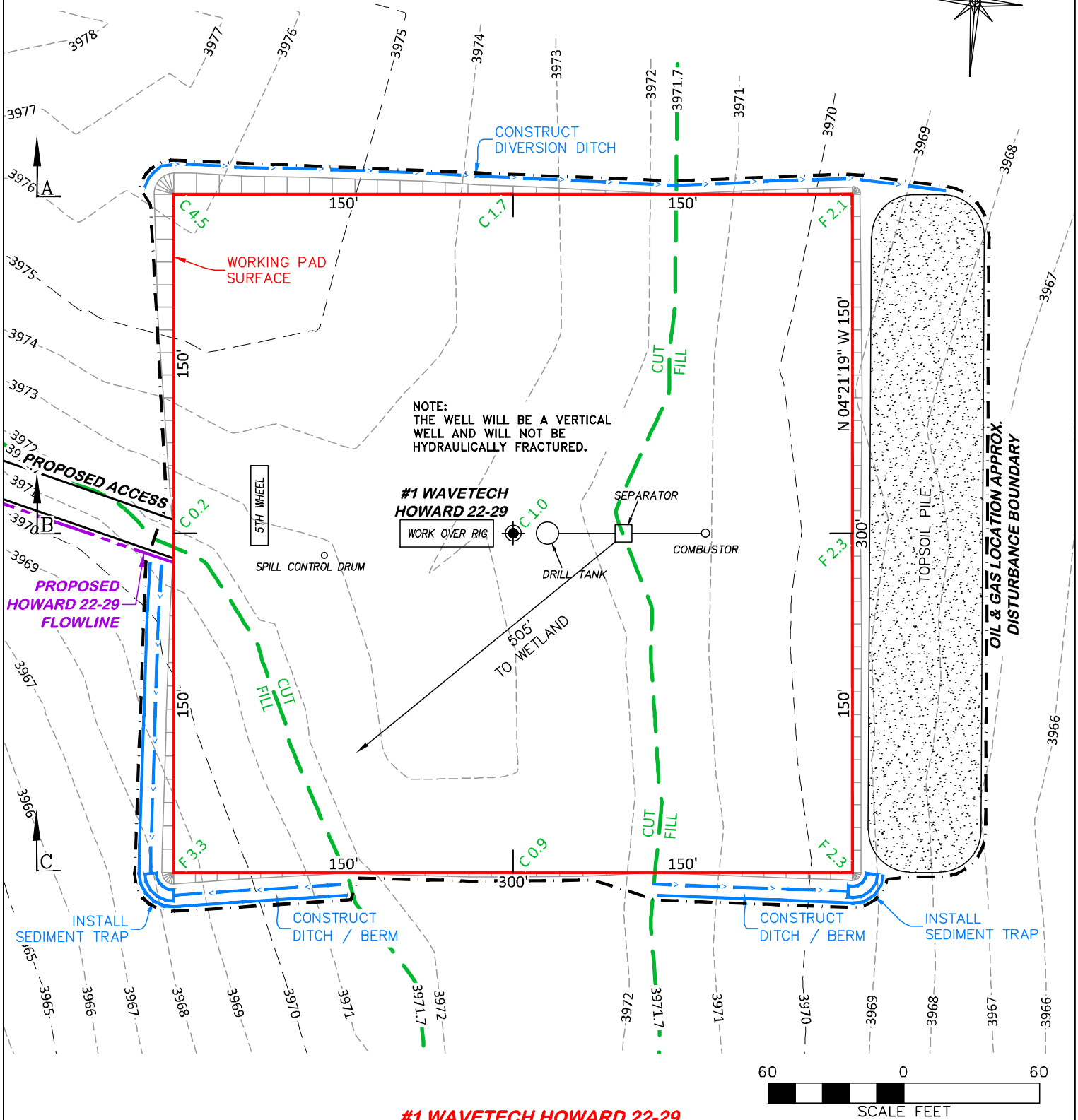
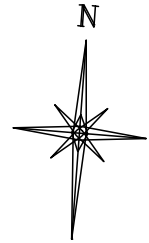
UNGRADED ELEVATION: 3972.7'

FINAL ELEVATION: 3971.7'

PROPOSED AREA OF DISTURBANCE: 2.7± ACRES

AREA OF WORKING PAD SURFACE: 2.1± ACRES

PROPOSED ACCESS DISTURBANCE: 5.4± ACRES



#1 WAVETECH HOWARD 22-29

CONSTRUCTION LAYOUT DRAWING 5 OF 6



DRIFIN & ASSOCIATES, INC.

(307) 362-5028

1414 ELK ST., ROCK SPRINGS, WY 82901

DRAWN: 11/16/22 - DWB/JMB

SCALE: 1" = 60'

REVISED: 8/21/24 - JMB

DRG JOB No. 22300

ECMC REVISIONS

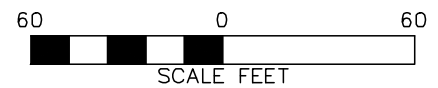
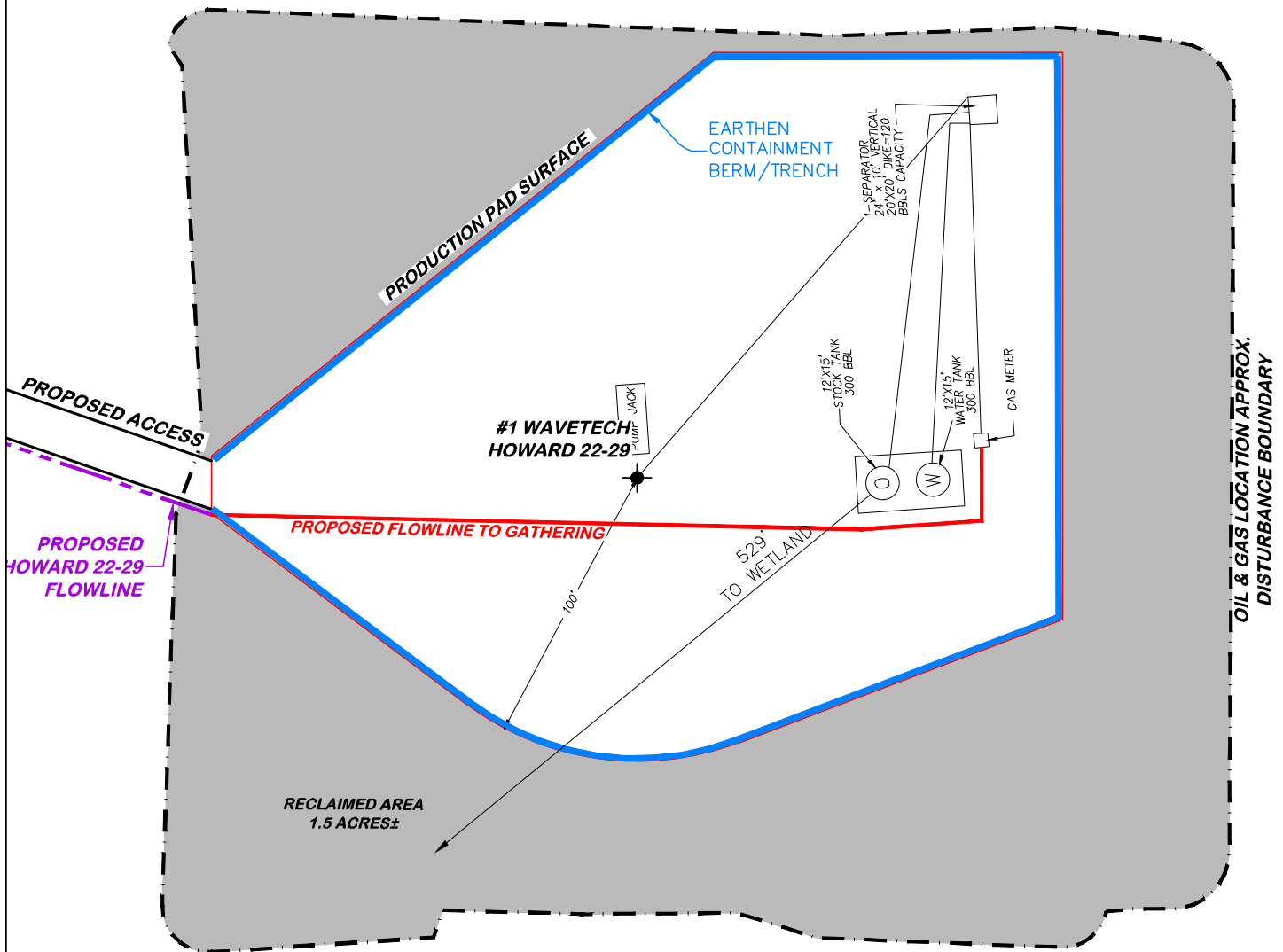
304b(7)Biii COMP

**PRELIMINARY WELL COMPLETIONS DRAWING
WAVETECH HELIUM, INC.**

#1 WAVETECH HOWARD 22-29

**SENW, SECTION 29, T. 13 S., R. 42 W., 6th P.M.,
CHEYENNE COUNTY, COLORADO**

APPROXIMATE DISTURBANCE AREA 2.7± ACRES
 PROPOSED RECLAMATION AREA: 1.5± ACRES
 INTERIM RECLAMATION DISTURBANCE: 1.2± ACRES



#1 WAVETECH HOWARD 22-29

CONSTRUCTION LAYOUT DRAWING 6 OF 6

DRG RIFFIN & ASSOCIATES, INC.
 (307) 362-5028 1414 ELK ST., ROCK SPRINGS, WY 82901

**FACILITY LAYOUT DRAWING
 WAVETECH HELIUM, INC.
 #1 WAVETECH HOWARD 22-29
 SENW, SECTION 29, T. 13 S., R. 42 W., 6th P.M.,
 CHEYENNE COUNTY, COLORADO**

DRAWN: 11/16/22 - DWB/JMB	SCALE: 1" = 60'
REVISED: 8/21/24 - JMB	DRG JOB No. 22300
ECMC REVISIONS	304b(7)Bv FACILITY