

UNGRADED ELEVATION: 4099.1'  
 FINAL ELEVATION: 4098.6'  
 AREA OF DISTURBANCE: 2.6± ACRES  
 AREA OF WORKING PAD SURFACE: 2.1± ACRES

#1 WAVETECH HADACHEK TRUST 21-23

SCALE FEET  
 BEFORE DIGGING  
 CALL FOR  
 UTILITY LINE LOCATION

**PAD LOCATION:**  
 LAT: N 38.912114  
 LONG: W 102.196203

HADACHEK JAMES  
 R & MARLA K  
 LIVING TRUST

HADACHEK JAMES  
 R & MARLA K  
 LIVING TRUST

HADACHEK JAMES  
 R & MARLA K  
 LIVING TRUST

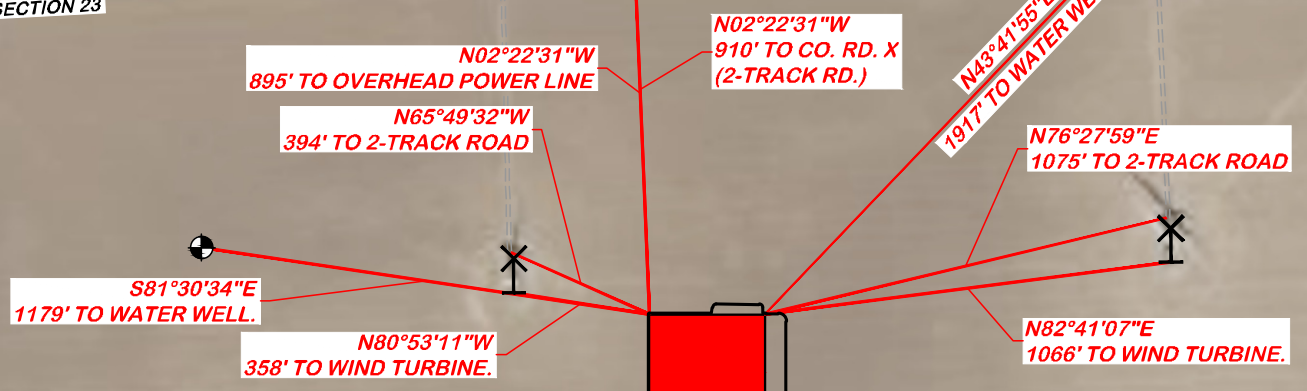
HADACHEK JAMES  
 R & MARLA K  
 LIVING TRUST

SECTION 15  
 SECTION 22

SECTION 14  
 SECTION 23

CO RD  
 X

CO RD  
 53



AGWAY FARMS 41-23  
 #1

PICKARD 34-14  
 #1

WORKING PAD SURFACE

PROPERTY LINE

2000' WORKING PAD SURFACE BUFFER

PROPOSED LOCATION DISTURBANCE

COUNTY ROAD / EXISTING 2-TRACK ROAD

OVERHEAD POWER LINE

WATER WELL

WIND TURBINE

PLUGGED OIL & GAS (P&A) WELL

LOCATION DRAWING

WAVETECH HELIUM, INC.  
 #1 WAVETECH HADACHEK TRUST 21-23  
 NEW, SECTION 23, T. 13 S., R. 43 W., 6th P.M.,  
 CHEYENNE COUNTY, COLORADO

**DRS RIFFIN & ASSOCIATES, INC.**  
 1414 ELK ST., ROCK SPRINGS, WY 82901  
 (307) 862-5028

SCALE: 1" = 500'

DRAWN: 11/18/22 - DWB/JMB

REVISED: 9/16/24 - JMB

DRG JOB No. 22302

304b(7)A LOC AERIAL

ECMC REVISIONS

LOCATION DRAWING FEATURES 304b(7)A	
FEATURE	DISTANCE
i BUILDING	3412' E
i BUILDING UNITS	3799' NW
ii PUBLICLY MAINTAINED ROADS AND TRAILS	910' N
iii FENCES	4076' S
iv ABOVE GROUND UTILITIES	AS SHOWN
v RAILROADS	5280' S
vi PIPELINES	5280' NW
vii MINES	5280' SE
viii OIL AND GAS WELLS AND PRODUCTION FACILITIES	5280' SE
ix INJECTION WELLS	5280' NE
x PLUGGED OIL AND GAS WELLS	2049' NE
xi KNOWN WATER WELLS	AS SHOWN
xii KNOWN SEWERS WITH MANHOLES	5280'

UNGRADED ELEVATION: 4099.1'  
 FINAL ELEVATION: 4098.6'  
 AREA OF DISTURBANCE: 2.6± ACRES  
 AREA OF WORKING PAD SURFACE: 2.1± ACRES

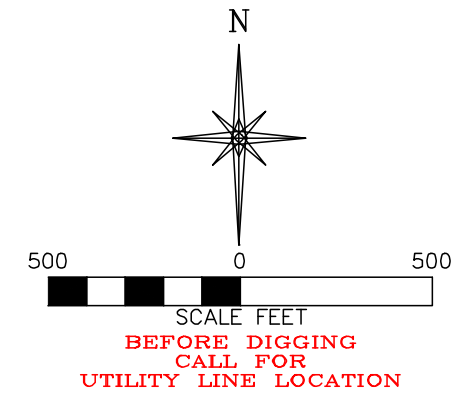
#1 WAVETECH HADACHEK TRUST 21-23

HADACHEK JAMES  
 R & MARLA K  
 LIVING TRUST

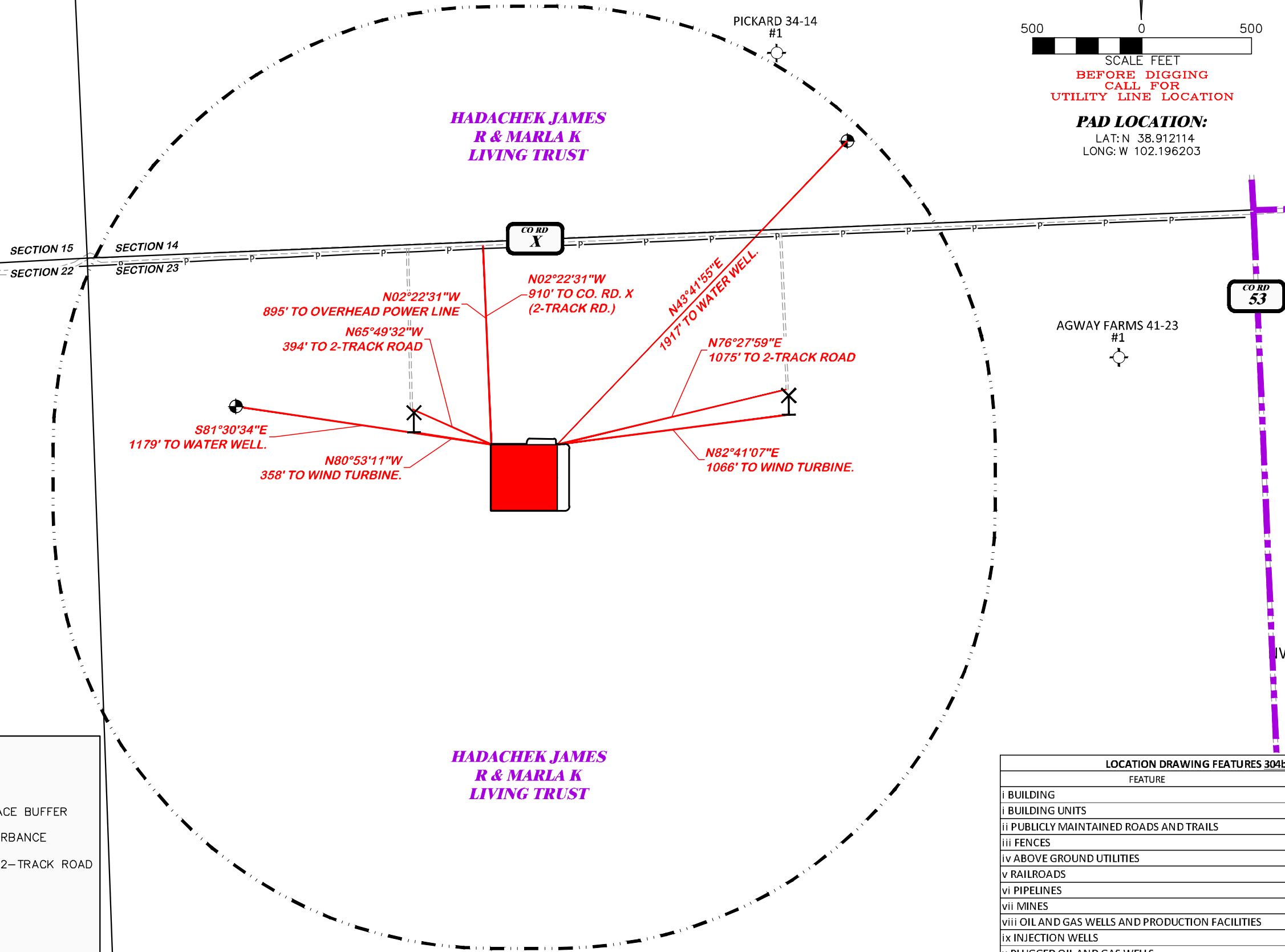
HADACHEK JAMES  
 R & MARLA K  
 LIVING TRUST

HADACHEK JAMES  
 R & MARLA K  
 LIVING TRUST

HADACHEK JAMES  
 R & MARLA K  
 LIVING TRUST



**PAD LOCATION:**  
 LAT: N 38.912114  
 LONG: W 102.196203



	WORKING PAD SURFACE
	PROPERTY LINE
	2000' WORKING PAD SURFACE BUFFER
	PROPOSED LOCATION DISTURBANCE
	COUNTY ROAD / EXISTING 2-TRACK ROAD
	OVERHEAD POWER LINE
	WATER WELL
	WIND TURBINE
	PLUGGED OIL & GAS (P&A) WELL

LOCATION DRAWING

WAVETECH HELIUM, INC.  
 #1 WAVETECH HADACHEK TRUST 21-23  
 NEW, SECTION 23, T.13 S., R.43 W., 6th P.M.,  
 CHEYENNE COUNTY, COLORADO

**DRS** RIFFIN & ASSOCIATES, INC.  
 1414 ELK ST., ROCK SPRINGS, WY 82901  
 (307) 862-5028

SCALE: 1" = 500'  
 DRAWN: 11/18/22 - DWB/JMB  
 REVISED: 9/16/24 - JMB  
 DRG JOB No. 22302  
 304b(7)A LOC DWG  
 ECMC REVISIONS

LOCATION DRAWING FEATURES 304b(7)A	
FEATURE	DISTANCE
i BUILDING	3412' E
ii BUILDING UNITS	3799' NW
iii PUBLICLY MAINTAINED ROADS AND TRAILS	910' N
iv FENCES	4076' S
v ABOVE GROUND UTILITIES	AS SHOWN
vi RAILROADS	5280' S
vii PIPELINES	5280' NW
viii MINES	5280' SE
ix OIL AND GAS WELLS AND PRODUCTION FACILITIES	5280' SE
x INJECTION WELLS	5280' NE
xi PLUGGED OIL AND GAS WELLS	2049' NE
xii KNOWN WATER WELLS	AS SHOWN
xiii KNOWN SEWERS WITH MANHOLES	5280'