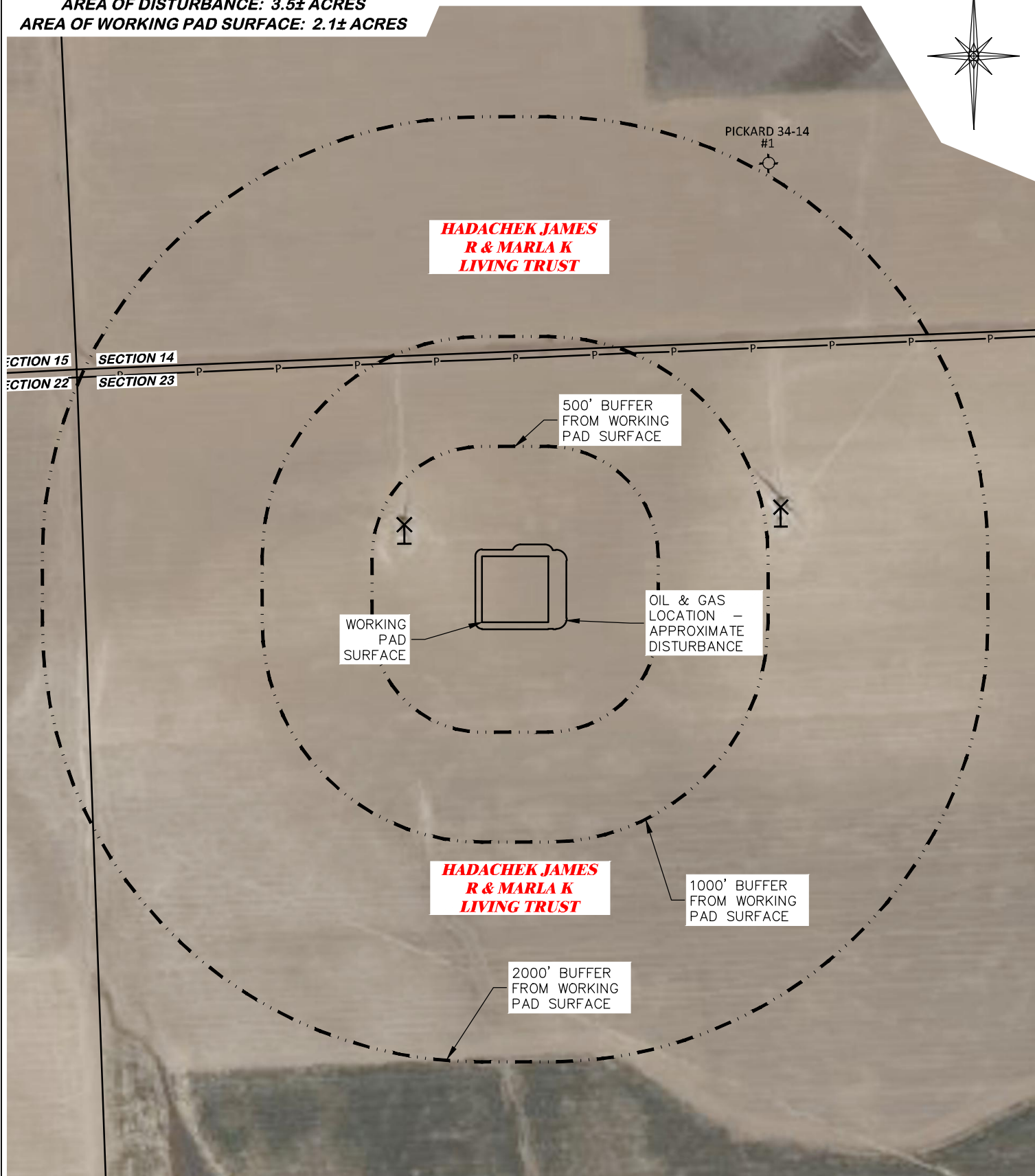
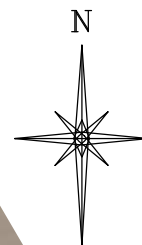


UNGRADED ELEVATION: 4099.1'
 FINAL ELEVATION: 4098.6'
 AREA OF DISTURBANCE: 3.5± ACRES
 AREA OF WORKING PAD SURFACE: 2.1± ACRES



CULTURAL ITEMS:	
MEASURED FROM NEAREST EDGE OF THE PROPOSED WORKING PAD SURFACE	
BUILDING	3412' E
RESIDENTIAL BUILDING	3799' NW
HIGH OCCUPANCY BUILDING	5280'+ N
DOAA	5280'+ N
PUBLIC ROAD	910' N
ABOVE GROUND UTILITY	AS SHOWN
RAILROAD	5280'+ S
PROPERTY LINE	3219' E
SCHOOL FACILITY	5280'+ N
SCHOOL PROPERTY LINE	5280'+ N
CHILDCARE FACILITY	5280'+ N
SCHOOL PROPERTY LINE	5280'+ N
DI COMMUNITY	5280'+ N

PRODUCTION FEATURE	CULTURAL FEATURE INFORMATION		
	0-500 FEET NUMBER	501 - 1,000 FEET NUMBER	1,001 - 2,000 FEET NUMBER
BUILDING	0	0	0
RESIDENTIAL BUILDING	0	0	0
HIGH OCCUPANCY BUILDING	0	0	0
SCHOOL PROPERTIES	0	0	0
SCHOOL FACILITIES	0	0	0
DOAA	0	0	0



#1 WAVETECH HADACHEK TRUST 21-23

DRG RIFFIN & ASSOCIATES, INC.
 (307) 362-5028 1414 ELK ST., ROCK SPRINGS, WY 82901

DRAWN: 11/18/22 - DWB/JMB	SCALE: 1" = 600'
REVISED: 12/5/23 - JMB	DRG JOB No. 22302
UPDATED TABLE	304b(3)C CULTURAL

CULTURAL DISTANCES DRAWING

**CULTURAL DISTANCES
 WAVETECH HELIUM, INC.
 #1 WAVETECH HADACHEK TRUST 21-23
 NENW, SECTION 23, T. 13 S., R. 43 W., 6th P.M.,
 CHEYENNE COUNTY, COLORADO**