

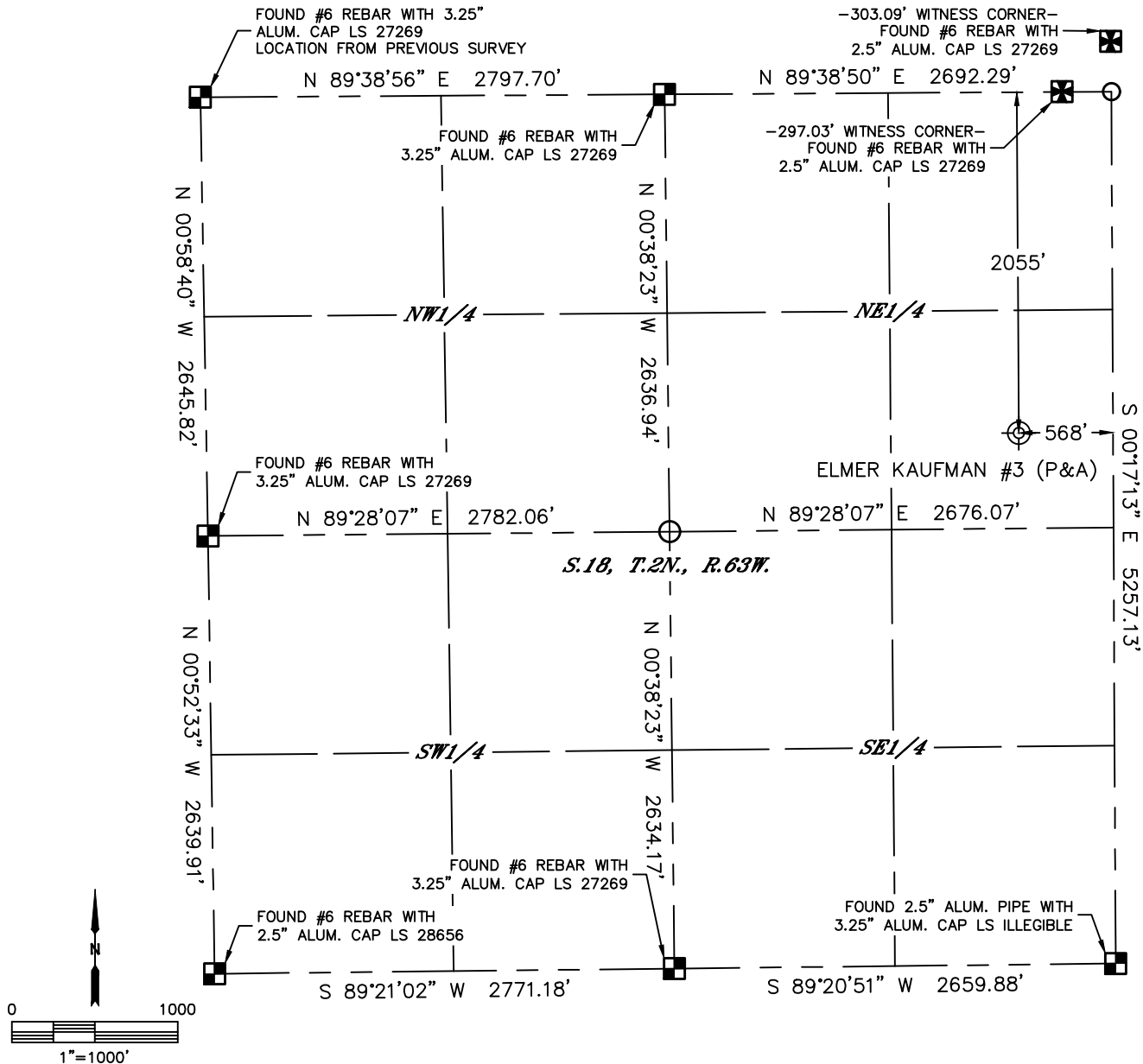


Lat40°, Inc. 6250 W. 10th Street, Unit 2, Greeley, CO 970-515-5294

# PLUGGED AND ABANDONED WELL EXHIBIT

ELMER KAUFMAN #3

SECTION: 18  
TOWNSHIP: 2N  
RANGE: 63W  
6TH. P.M.  
WELD COUNTY, CO



CLIENT: CHEVRON ROCKIES BUSINESS UNIT				LANDMAN: KADEN LIGHT		
INSTRUMENT OPERATOR: BRIAN ROTTINGHAUS				SURVEY DATE: 9/10/2024		SURFACE USE: RANGELAND
SHL FOOTAGE	SHL LAT °	SHL LONG °	SHL PDOP	SHL ELEV (FT.)	SHL 1/4/1/4	SHL S-T-R
2055 FNL 568 FEL	40.13993	-104.47287	0.9	4879	SENE	18-2-63
DESCRIPTION: LOCATED STAKE SET BY CLIENT. FOUND STRONG METAL DETECTOR RING AT MARKED LOCATION. ALSO FOUND GROUND ANCHORS, MISCELLANEOUS SCRAP PIPE, FITTINGS AND CAPS IN THE AREA.						

## NOTE:

- 1) Bearings shown are Grid Bearings of the Colorado State Plane Coordinate System, North Zone, North American Datum 1983. The lineal dimensions as contained herein are based upon the "U.S. Survey Foot."
- 2) Distances to section lines measured at 90 degrees from said section lines.
- 3) Ground elevations are based on an observed GPS elevation (NAVD 1988 DATUM).
- 4) Latitude and Longitude shown are (NAD 83 DATUM).
- 5) Sectional data as shown hereon is from previous surveys and was not verified for this P&A Exhibit.
- 6) This map does not represent a boundary survey.

## LEGEND

- = ALIQUOT MONUMENT AS DESCRIBED
- = CALCULATED POSITION
- ⊙ = ABANDONED WELL



SHEET 1 OF 2

Brian S. Rottinghaus—On behalf of Lat40°, Inc.  
Colorado Licensed Professional Land Surveyor No. 38571  
DATE: 9/24/2024  
PROJECT#: 2024254

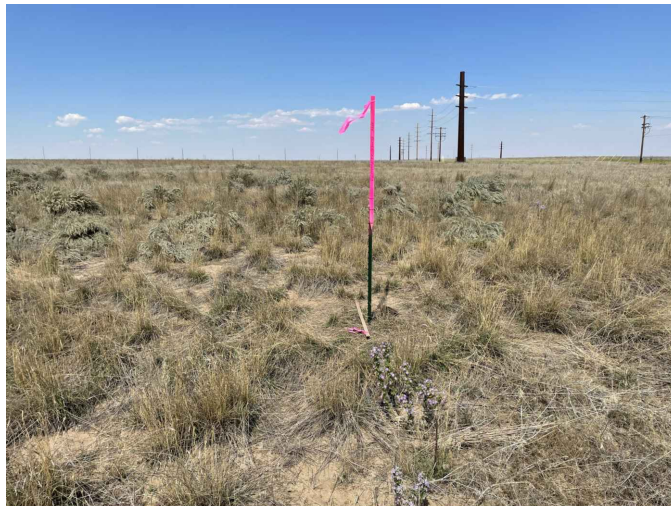


Lat40°, Inc. 6250 W. 10th Street, Unit 2, Greeley, CO 970-515-5294

## PLUGGED AND ABANDONED WELL EXHIBIT

**ELMER KAUFMAN #3**

SECTION: 18  
TOWNSHIP: 2N  
RANGE: 63W  
6TH. P.M.  
WELD COUNTY, CO  
DATE: 9/10/2024



VIEW NORTH



VIEW WEST



VIEW EAST



VIEW SOUTH