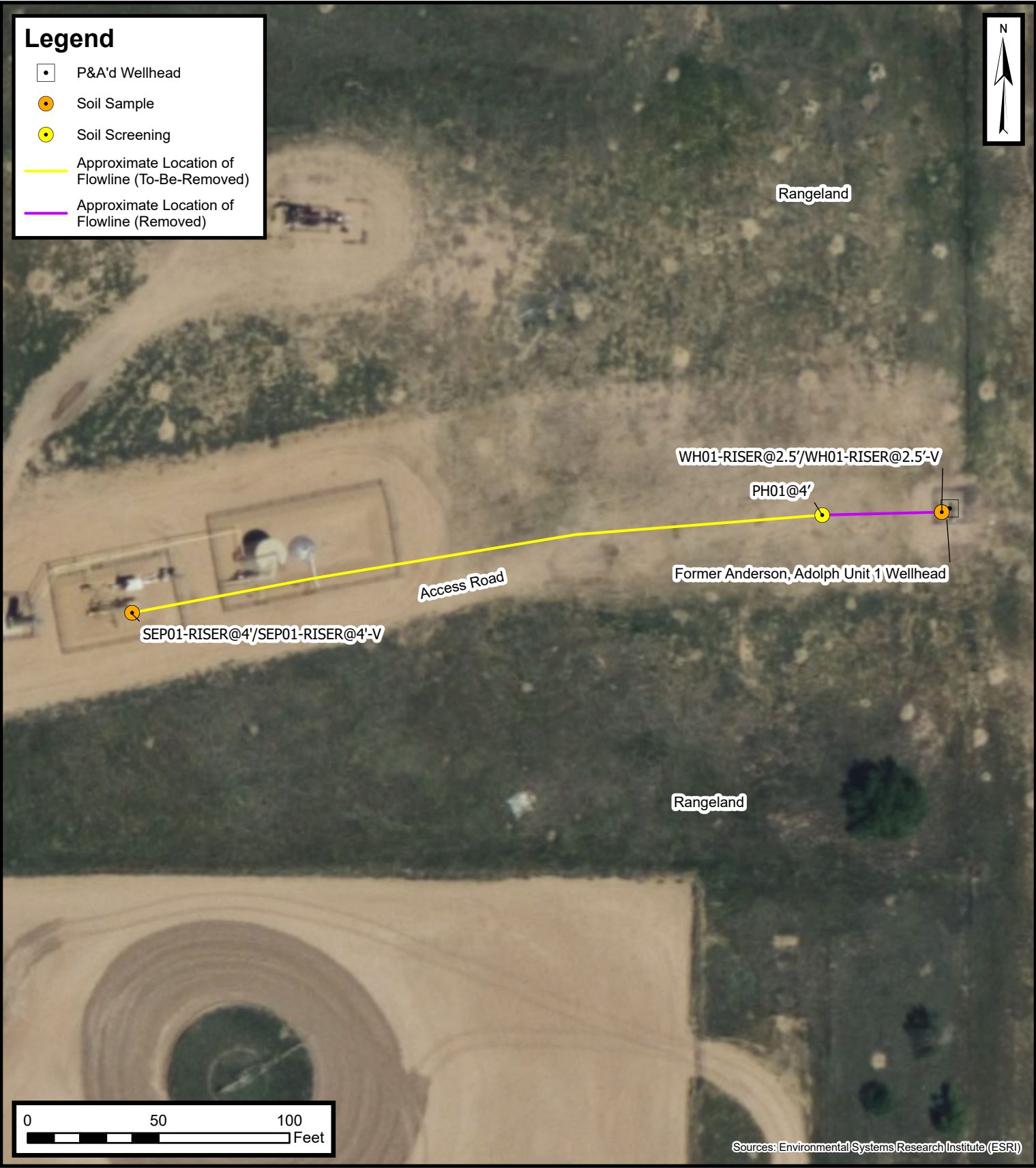


# Legend

- P&A'd Wellhead
- Soil Sample
- Soil Screening
- Approximate Location of Flowline (To-Be-Removed)
- Approximate Location of Flowline (Removed)



Default Folder: C:\Users\Margan Tai\OneDrive - ENSOLUM, LLC\Ensolum GIS

Sources: Environmental Systems Research Institute (ESRI)



## Flowline Excavation Site Map

Anderson, Adolph Unit 1 Flowline  
Kerr-McGee Oil & Gas Onshore, LP  
SWSW SEC 22-T2N-R66W  
Weld County, CO

Project Number: 09A1417745

FIGURE

2