

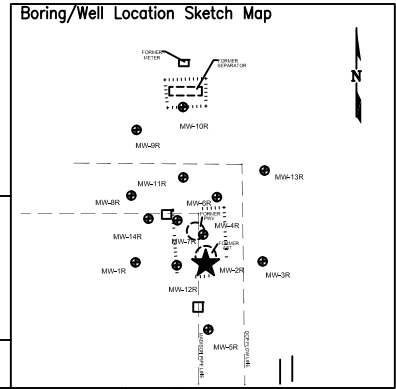




# BORING/WELL CONSTRUCTION LOG

Page 1 of 1

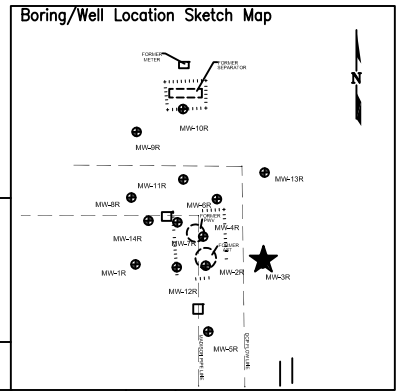
Boring/Well No. <b>MW-2/MW-2R</b>		Total Depth <b>12'</b>	Location <b>Noble Energy, Inc. HSR Fischer 6-23 NWNE, Sec 23, T4N, R65W, 6th P.M. Weld County, Colorado</b>		
Project No./Name <b>C024-016 / Noble HSR Fischer 6-23</b>			Approved By		
Drilling Contractor/Driller <b>DrillPro</b>			Geologist/Office <b>Paul Henehan / Fremont Environmental, Inc.</b>		
Drilling Equipment/Method <b>Geoprobe</b>			Size/Type of Bit <b>2.5" direct push</b>	Sampling Method <b>direct push</b>	Start/Finish Date <b>1/29/2024</b>
Well Installed? Yes <input checked="" type="checkbox"/> No <input type="checkbox"/>	Casing Mtrl./Dia. <b>PVC/1"</b>	Screen: Type <b>Slotted</b> Mtrl. <b>PVC</b> Length <b>10'</b> Dia. <b>1"</b> Slot Size <b>0.010"</b>			
Elevation of: (ft. above datum)	Ground Surface .	Top of Well Casing <b>5.08</b>	Top of Screen .	Bottom of Screen .	Ground Water Surface/Date Measured <b>2.86 1/29/2024</b>



DEPTH (feet)	WELL CONSTRUCTION		LITHOLOGY		Penetration Rate (blows/6")	Recovery (%)	Sample Interval (feet)	PID Values (ppm)
			GRAPHIC LOG	VISUAL DESCRIPTION				
				Fill, silty sand, moist, brown, no stain, no odor				
	Bentonite	1" Blank	SM					0
5	#10-20 Silica Sand	1" Screen		Silty sand to 7', medium to coarse sand, wet, no stain, no odor				0
10			SP	Medium to coarse sand to 10.5', then firm sandy silt, wet, no stain, no odor				0
			ML					0
				TD 12'				
15								
20								



# BORING/WELL CONSTRUCTION LOG



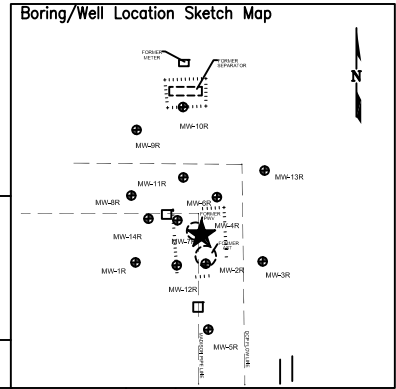
Page 1 of 1

Boring/Well No. <b>MW-3/MW-3R</b>	Total Depth <b>10'</b>	Location <b>Noble Energy, Inc. HSR Fischer 6-23 NWNE, Sec 23, T4N, R65W, 6th P.M. Weld County, Colorado</b>			
Project No./Name <b>C024-016 / Noble HSR Fischer 6-23</b>		Approved By			
Drilling Contractor/Driller <b>DrillPro</b>		Geologist/Office <b>Paul Henehan / Fremont Environmental, Inc.</b>			
Drilling Equipment/Method <b>Geoprobe</b>		Size/Type of Bit <b>2.5" direct push</b>	Sampling Method <b>direct push</b>	Start/Finish Date <b>1/29/2024</b>	
Well Installed? Yes <input checked="" type="checkbox"/> No <input type="checkbox"/>	Casing Mtrl./Dia. <b>PVC/1"</b>	Screen: Type <b>Slotted</b> Mtrl. <b>PVC</b>	Length <b>10'</b>	Dia. <b>1"</b>	Slot Size <b>0.010"</b>
Elevation of: (ft. above datum)	Ground Surface .	Top of Well Casing <b>4.95</b>	Top of Screen .	Bottom of Screen .	Ground Water Surface/Date Measured <b>2.97 1/29/2024</b>

DEPTH (feet)	WELL CONSTRUCTION		LITHOLOGY		Penetration Rate (blows/6")	Recovery (%)	Sample Interval (feet)	PID Values (ppm)
			GRAPHIC LOG	VISUAL DESCRIPTION				
5	<div><div>Bentonite</div><div>#10-20 Silica Sand</div></div>	<div><div>1" Blank</div><div>1" Screen</div></div>	SM	Silty sand, moist, light gray stain, no odor				0
				Silty sand to 7.5', then medium to coarse sand, wet, no stain, no odor				0
			SP	Sand to 9', then firm sandy silt				0
			ML	TD 10'				0
10								
15								
20								



# BORING/WELL CONSTRUCTION LOG



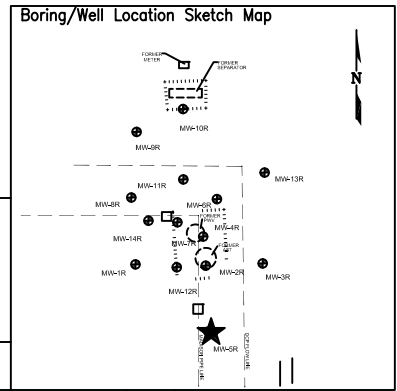
Page 1 of 1

Boring/Well No. <b>MW-4/MW-4R</b>	Total Depth <b>10'</b>	Location <b>Noble Energy, Inc. HSR Fischer 6-23 NWNE, Sec 23, T4N, R65W, 6th P.M. Weld County, Colorado</b>		
Project No./Name <b>C024-016 / Noble HSR Fischer 6-23</b>		Approved By		
Drilling Contractor/Driller <b>DrillPro</b>		Sampling Method <b>direct push</b>		
Geologist/Office <b>Paul Henehan / Fremont Environmental, Inc.</b>		Start/Finish Date <b>1/29/2024</b>		
Drilling Equipment/Method <b>Geoprobe</b>		Size/Type of Bit <b>2.5" direct push</b>	Start/Finish Date <b>1/29/2024</b>	
Well Installed? Yes <input checked="" type="checkbox"/> No <input type="checkbox"/>	Casing Mtrl./Dia. <b>PVC/1"</b>	Screen: Type <b>Slotted</b> Mtrl. <b>PVC</b> Length <b>10'</b> Dia. <b>1"</b> Slot Size <b>0.010"</b>		
Elevation of: (ft. above datum)	Ground Surface .	Top of Well Casing <b>1.87</b>	Top of Screen .	Bottom of Screen .
		Ground Water Surface/Date Measured <b>2.91</b>	<b>1/29/2024</b>	

DEPTH (feet)	WELL CONSTRUCTION		LITHOLOGY		Penetration Rate (blows/6")	Recovery (%)	Sample Interval (feet)	PID Values (ppm)
			GRAPHIC LOG	VISUAL DESCRIPTION				
5	<div>Bentonite</div> <div>#10-20 Silica Sand</div>	<div>1" Blank</div> <div>1" Screen</div>	SM	Silty sand, moist, no stain, no odor				0
				Silty sand to 7', then medium to coarse sand				0
			SP	Sand to 9', then firm sandy silt, dark gray stain				0
			ML	9' - 10', wet				
			TD 10'					14
10								
15								
20								



# BORING/WELL CONSTRUCTION LOG



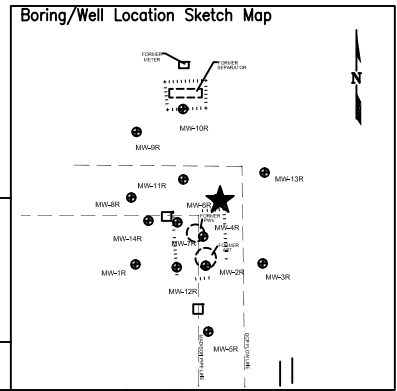
Page 1 of 1

Boring/Well No. <b>MW-5/MW-5R</b>		Total Depth <b>10'</b>	Location <b>Noble Energy, Inc. HSR Fischer 6-23 NWNE, Sec 23, T4N, R65W, 6th P.M. Weld County, Colorado</b>			
Project No./Name <b>C024-016 / Noble HSR Fischer 6-23</b>			Approved By			
Drilling Contractor/Driller <b>DrillPro</b>			Sampling Method <b>direct push</b>			
Geologist/Office <b>Paul Henehan / Fremont Environmental, Inc.</b>			Start/Finish Date <b>1/29/2024</b>			
Drilling Equipment/Method <b>Geoprobe</b>			Size/Type of Bit <b>2.5" direct push</b>		Sampling Method <b>direct push</b>	
Well Installed? Yes <input checked="" type="checkbox"/> No <input type="checkbox"/>		Casing Mtrl./Dia. <b>PVC/1"</b>	Screen: Type <b>Slotted</b> Mtrl. <b>PVC</b>		Length <b>10'</b> Dia. <b>1"</b> Slot Size <b>0.010"</b>	
Elevation of: (ft. above datum)		Ground Surface <b>.</b>	Top of Well Casing <b>5.06</b>	Top of Screen <b>.</b>	Bottom of Screen <b>.</b>	Ground Water Surface/Date Measured <b>5.96 1/29/2024</b>

DEPTH (feet)	WELL CONSTRUCTION		LITHOLOGY		Penetration Rate (blows/6")	Recovery (%)	Sample Interval (feet)	PID Values (ppm)
			GRAPHIC LOG	VISUAL DESCRIPTION				
5	<div>Bentonite</div> <div>#10-20 Silica Sand</div>	<div>1" Blank</div> <div>1" Screen</div>	ML	Sandy silt, moist, light brown, no stain, no odor				0
			SM	Silty sand, brown, wet at 5', no stain, no odor				0
			SP	Medium to coarse sand to 9', then firm sandy silt, brown, no stain, no odor				0
			ML	TD 10'				0
10								
15								
20								



# BORING/WELL CONSTRUCTION LOG



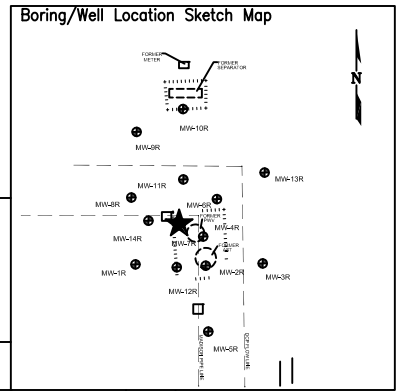
Page 1 of 1

Boring/Well No. <b>MW-6/MW-6R</b>		Total Depth <b>10'</b>	Location <b>Noble Energy, Inc. HSR Fischer 6-23 NWNE, Sec 23, T4N, R65W, 6th P.M. Weld County, Colorado</b>			
Project No./Name <b>C024-016 / Noble HSR Fischer 6-23</b>			Approved By			
Drilling Contractor/Driller <b>DrillPro</b>			Sampling Method <b>direct push</b>			
Geologist/Office <b>Paul Henehan / Fremont Environmental, Inc.</b>			Start/Finish Date <b>1/29/2024</b>			
Drilling Equipment/Method <b>Geoprobe</b>			Size/Type of Bit <b>2.5" direct push</b>		Sampling Method <b>direct push</b>	
Well Installed? Yes <input checked="" type="checkbox"/> No <input type="checkbox"/>		Casing Mtrl./Dia. <b>PVC/1"</b>	Screen: Type <b>Slotted</b> Mtrl. <b>PVC</b>		Length <b>10'</b> Dia. <b>1"</b> Slot Size <b>0.010"</b>	
Elevation of: (ft. above datum)		Ground Surface <b>.</b>	Top of Well Casing <b>2.19</b>	Top of Screen <b>.</b>	Bottom of Screen <b>.</b>	Ground Water Surface/Date Measured <b>5.80 1/29/2024</b>

DEPTH (feet)	WELL CONSTRUCTION		LITHOLOGY		Penetration Rate (blows/6")	Recovery (%)	Sample Interval (feet)	PID Values (ppm)
			GRAPHIC LOG	VISUAL DESCRIPTION				
5	<div><div>Bentonite</div><div>#10-20 Silica Sand</div></div>	<div><div>1" Blank</div><div>1" Screen</div></div>	ML	Sandy silt, moist, brown, no stain, no odor				0
			SM	Silty sand to 7.5', then firm sandy silt to 8', dark gray 6' - 7', moderate odor, wet				0
			ML	Silty sand to 9', then firm sandy silt, gray stain 8' - 9' with moderate odor				210
			ML	TD 10'				0
10								
15								
20								



# BORING/WELL CONSTRUCTION LOG



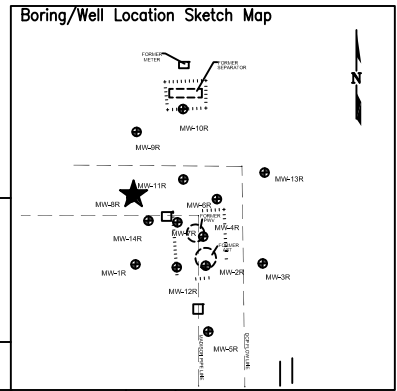
Page 1 of 1

Boring/Well No. <b>MW-7/MW-7R</b>	Total Depth <b>10'</b>	Location <b>Noble Energy, Inc. HSR Fischer 6-23 NWNE, Sec 23, T4N, R65W, 6th P.M. Weld County, Colorado</b>			
Project No./Name <b>C024-016 / Noble HSR Fischer 6-23</b>		Approved By			
Drilling Contractor/Driller <b>DrillPro</b>		Sampling Method <b>direct push</b>			
Geologist/Office <b>Paul Henehan / Fremont Environmental, Inc.</b>		Start/Finish Date <b>1/29/2024</b>			
Drilling Equipment/Method <b>Geoprobe</b>		Size/Type of Bit <b>2.5" direct push</b>		Start/Finish Date <b>1/29/2024</b>	
Well Installed? Yes <input checked="" type="checkbox"/> No <input type="checkbox"/>	Casing Mtrl./Dia. <b>PVC/1"</b>	Screen: Type <b>Slotted</b> Mtrl. <b>PVC</b> Length <b>10'</b> Dia. <b>1"</b> Slot Size <b>0.010"</b>			
Elevation of: (ft. above datum)	Ground Surface .	Top of Well Casing <b>1.84</b>	Top of Screen .	Bottom of Screen .	Ground Water Surface/Date Measured <b>6.14 1/29/2024</b>

DEPTH (feet)	WELL CONSTRUCTION		LITHOLOGY		Penetration Rate (blows/6")	Recovery (%)	Sample Interval (feet)	PID Values (ppm)
			GRAPHIC LOG	VISUAL DESCRIPTION				
5	<div>Bentonite</div> <div>#10-20 Silica Sand</div>	<div>1" Blank</div> <div>1" Screen</div>	ML	Sandy silt, brown, moist, gray stain from 3.5' - 4', light odor				0
			SM	Silty sand, dark gray, strong odor, wet, with moderate odor				2
			SP	Sand to 9', then firm sandy silt, dark gray with moderate odor				75
			ML					450
10			TD 10'					110
15								
20								



# BORING/WELL CONSTRUCTION LOG



Page 1 of 1

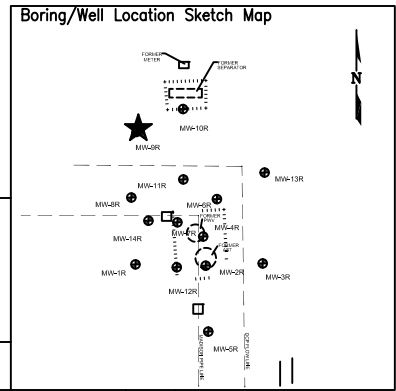
Boring/Well No. <b>MW-8/MW-8R</b>	Total Depth <b>10'</b>	Location <b>Noble Energy, Inc. HSR Fischer 6-23 NWNE, Sec 23, T4N, R65W, 6th P.M. Weld County, Colorado</b>		
Project No./Name <b>C024-016 / Noble HSR Fischer 6-23</b>		Approved By		
Drilling Contractor/Driller <b>DrillPro</b>		Sampling Method <b>direct push</b>		
Geologist/Office <b>Paul Henehan / Fremont Environmental, Inc.</b>		Start/Finish Date <b>1/29/2024</b>		
Drilling Equipment/Method <b>Geoprobe</b>		Size/Type of Bit <b>2.5" direct push</b>	Start/Finish Date <b>1/29/2024</b>	
Well Installed? Yes <input checked="" type="checkbox"/> No <input type="checkbox"/>	Casing Mtrl./Dia. <b>PVC/1"</b>	Screen: Type <b>Slotted</b> Mtrl. <b>PVC</b> Length <b>10'</b> Dia. <b>1"</b> Slot Size <b>0.010"</b>		
Elevation of: (ft. above datum)	Ground Surface .	Top of Well Casing <b>2.32</b>	Top of Screen .	Bottom of Screen .
		Ground Water Surface/Date Measured <b>5.77</b>	<b>1/29/2024</b>	

DEPTH (feet)	WELL CONSTRUCTION		LITHOLOGY		Penetration Rate (blows/6")	Recovery (%)	Sample Interval (feet)	PID Values (ppm)
			GRAPHIC LOG	VISUAL DESCRIPTION				
	Bentonite	1" Blank	SM	Silty sand, firm, brown, moist, no stain, no odor				
5	#10-20 Silica Sand	1" Screen	SP	Sand to 7', then sandy silt to 8'				0
			ML					0
			SP	Medium sand to 9', then firm sandy silt, no stain, no odor				0
10			ML	TD 10'				0
15								
20								





# BORING/WELL CONSTRUCTION LOG



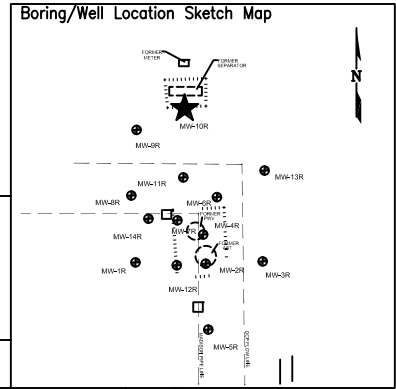
Page 1 of 1

Boring/Well No. <b>MW-9/MW-9R</b>	Total Depth <b>10'</b>	Location <b>Noble Energy, Inc. HSR Fischer 6-23 NWNE, Sec 23, T4N, R65W, 6th P.M. Weld County, Colorado</b>		
Project No./Name <b>C024-016 / Noble HSR Fischer 6-23</b>		Approved By		
Drilling Contractor/Driller <b>DrillPro</b>		Sampling Method <b>direct push</b>		
Geologist/Office <b>Paul Henehan / Fremont Environmental, Inc.</b>		Start/Finish Date <b>1/29/2024</b>		
Drilling Equipment/Method <b>Geoprobe</b>		Size/Type of Bit <b>2.5" direct push</b>	Start/Finish Date <b>1/29/2024</b>	
Well Installed? Yes <input checked="" type="checkbox"/> No <input type="checkbox"/>	Casing Mtrl./Dia. <b>PVC/1"</b>	Screen: Type <b>Slotted</b> Mtrl. <b>PVC</b> Length <b>10'</b> Dia. <b>1"</b> Slot Size <b>0.010"</b>		
Elevation of: (ft. above datum)	Ground Surface .	Top of Well Casing <b>1.75</b>	Top of Screen .	Bottom of Screen .
		Ground Water Surface/Date Measured <b>6.46</b> <b>1/29/2024</b>		

DEPTH (feet)	WELL CONSTRUCTION		LITHOLOGY		Penetration Rate (blows/6")	Recovery (%)	Sample Interval (feet)	PID Values (ppm)
			GRAPHIC LOG	VISUAL DESCRIPTION				
	Bentonite	1" Blank	SM	Silty sand, brown, moist, no stain, no odor				
5	#10-20 Silica Sand	1" Screen		Silty sand, brown, wet, no stain, no odor				0
10				Silty sand, brown, wet, no stain, no odor				0
15								
20				TD 10'				0



# BORING/WELL CONSTRUCTION LOG



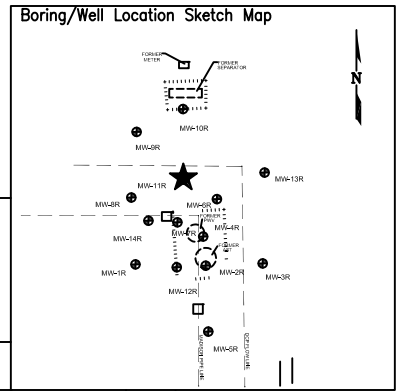
Page 1 of 1

Boring/Well No. <b>MW-10/MW-10R</b>		Total Depth <b>10'</b>	Location <b>Noble Energy, Inc. HSR Fischer 6-23 NWNE, Sec 23, T4N, R65W, 6th P.M. Weld County, Colorado</b>		
Project No./Name <b>C024-016 / Noble HSR Fischer 6-23</b>			Approved By		
Drilling Contractor/Driller <b>DrillPro</b>			Sampling Method <b>direct push</b>		
Geologist/Office <b>Paul Henehan / Fremont Environmental, Inc.</b>			Start/Finish Date <b>1/29/2024</b>		
Drilling Equipment/Method <b>Geoprobe</b>			Size/Type of Bit <b>2.5" direct push</b>		
Well Installed? Yes <input checked="" type="checkbox"/> No <input type="checkbox"/>	Casing Mtrl./Dia. <b>PVC/1"</b>	Screen: Type <b>Slotted</b> Mtrl. <b>PVC</b> Length <b>10'</b> Dia. <b>1"</b> Slot Size <b>0.010"</b>			
Elevation of: (ft. above datum)	Ground Surface .	Top of Well Casing <b>1.71</b>	Top of Screen .	Bottom of Screen .	Ground Water Surface/Date Measured <b>6.52</b> <b>1/29/2024</b>

DEPTH (feet)	WELL CONSTRUCTION		LITHOLOGY		Penetration Rate (blows/6")	Recovery (%)	Sample Interval (feet)	PID Values (ppm)
			GRAPHIC LOG	VISUAL DESCRIPTION				
	Bentonite	1" Blank	SM	Fill (silty sand, small gravel) brown, moist, no stain, no odor				
5	#10-20 Silica Sand	1" Screen		Silty sand, brown, wet, no stain, no odor				0
10				Silty sand, brown, wet, no stain, no odor				0
15								
20				TD 10'				0



# BORING/WELL CONSTRUCTION LOG



Page 1 of 1

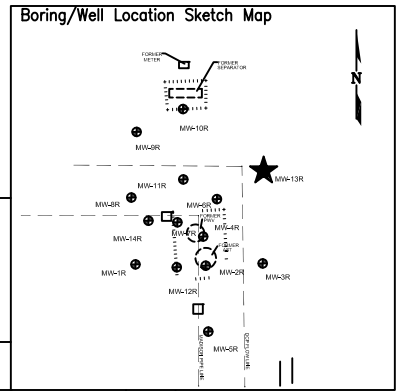
Boring/Well No. <b>MW-11/MW-11R</b>		Total Depth <b>10'</b>	Location <b>Noble Energy, Inc. HSR Fischer 6-23 NWNE, Sec 23, T4N, R65W, 6th P.M. Weld County, Colorado</b>		
Project No./Name <b>C024-016 / Noble HSR Fischer 6-23</b>		Approved By			
Drilling Contractor/Driller <b>DrillPro</b>					
Geologist/Office <b>Paul Henehan / Fremont Environmental, Inc.</b>					
Drilling Equipment/Method <b>Geoprobe</b>		Size/Type of Bit <b>2.5" direct push</b>	Sampling Method <b>direct push</b>	Start/Finish Date <b>1/29/2024</b>	
Well Installed? Yes <input checked="" type="checkbox"/> No <input type="checkbox"/>	Casing Mtrl./Dia. <b>PVC/1"</b>	Screen: Type <b>Slotted</b> Mtrl. <b>PVC</b> Length <b>10'</b> Dia. <b>1"</b> Slot Size <b>0.010"</b>			
Elevation of: (ft. above datum)	Ground Surface .	Top of Well Casing <b>2.66</b>	Top of Screen .	Bottom of Screen .	Ground Water Surface/Date Measured <b>5.39</b> <b>1/29/2024</b>

DEPTH (feet)	WELL CONSTRUCTION		LITHOLOGY		Penetration Rate (blows/6")	Recovery (%)	Sample Interval (feet)	PID Values (ppm)
			GRAPHIC LOG	VISUAL DESCRIPTION				
5	<div>Bentonite</div> <div>#10-20 Silica Sand</div>	<div>1" Blank</div> <div>1" Screen</div>	SM	Silty sand, moist, wet at 4', brown, no stain, no odor				0
			SP	Medium sand to 6.5', then silty sand, dark gray with moderate odor 6' to 7'				0
			SM	Silty sand, brown, wet, no stain, no odor				59
10				TD 10'				10
15								0
20								





# BORING/WELL CONSTRUCTION LOG



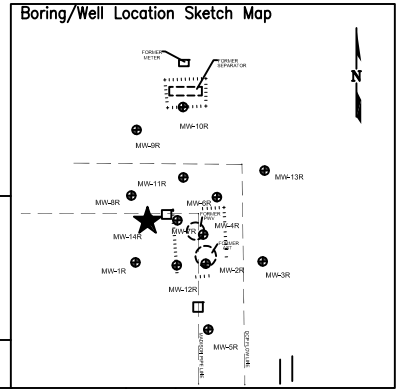
Page 1 of 1

Boring/Well No. <b>MW-13/MW-13R</b>	Total Depth <b>10'</b>	Location <b>Noble Energy, Inc. HSR Fischer 6-23 NWNE, Sec 23, T4N, R65W, 6th P.M. Weld County, Colorado</b>		
Project No./Name <b>C024-016 / Noble HSR Fischer 6-23</b>		Approved By		
Drilling Contractor/Driller <b>DrillPro</b>		Sampling Method <b>direct push</b>		
Geologist/Office <b>Paul Henehan / Fremont Environmental, Inc.</b>		Start/Finish Date <b>1/29/2024</b>		
Drilling Equipment/Method <b>Geoprobe</b>		Size/Type of Bit <b>2.5" direct push</b>	Start/Finish Date <b>1/29/2024</b>	
Well Installed? Yes <input checked="" type="checkbox"/> No <input type="checkbox"/>	Casing Mtrl./Dia. <b>PVC/1"</b>	Screen: Type <b>Slotted</b> Mtrl. <b>PVC</b> Length <b>10'</b> Dia. <b>1"</b> Slot Size <b>0.010"</b>		
Elevation of: (ft. above datum)	Ground Surface .	Top of Well Casing <b>2.42</b>	Top of Screen .	Bottom of Screen .
		Ground Water Surface/Date Measured <b>5.64</b>	<b>1/29/2024</b>	

DEPTH (feet)	WELL CONSTRUCTION		LITHOLOGY		Penetration Rate (blows/6")	Recovery (%)	Sample Interval (feet)	PID Values (ppm)
			GRAPHIC LOG	VISUAL DESCRIPTION				
5	<div>Bentonite</div> <div>#10-20 Silica Sand</div>	<div>1" Blank</div> <div>1" Screen</div>	ML	Sandy silt, brown, moist, no stain, no odor				0
			SM	Silty sand to 7', then firm sandy silt, brown, wet, no stain, no odor				0
			ML	Silty sand, brown, wet				0
			TD 12'					0
10								
15								
20								



# BORING/WELL CONSTRUCTION LOG



Page 1 of 1

Boring/Well No. <b>MW-14/MW-14R</b>		Total Depth <b>10'</b>	Location <b>Noble Energy, Inc. HSR Fischer 6-23 NWNE, Sec 23, T4N, R65W, 6th P.M. Weld County, Colorado</b>		
Project No./Name <b>C024-016 / Noble HSR Fischer 6-23</b>		Approved By			
Drilling Contractor/Driller <b>DrillPro</b>		Geologist/Office <b>Paul Henehan / Fremont Environmental, Inc.</b>			
Drilling Equipment/Method <b>Geoprobe</b>		Size/Type of Bit <b>2.5" direct push</b>	Sampling Method <b>direct push</b>	Start/Finish Date <b>1/29/2024</b>	
Well Installed? Yes <input checked="" type="checkbox"/> No <input type="checkbox"/>	Casing Mtrl./Dia. <b>PVC/1"</b>	Screen: Type <b>Slotted</b> Mtrl. <b>PVC</b> Length <b>10'</b> Dia. <b>1"</b> Slot Size <b>0.010"</b>			
Elevation of: (ft. above datum)	Ground Surface .	Top of Well Casing <b>1.53</b>	Top of Screen .	Bottom of Screen .	Ground Water Surface/Date Measured <b>6.52</b> <b>1/29/2024</b>

DEPTH (feet)	WELL CONSTRUCTION		LITHOLOGY		Penetration Rate (blows/6")	Recovery (%)	Sample Interval (feet)	PID Values (ppm)
			GRAPHIC LOG	VISUAL DESCRIPTION				
	Bentonite	1" Blank	SM	Silty sand, brown, moist, no stain, no odor				0
5	#10-20 Silica Sand	1" Screen	SP	Medium to coarse sand to 7', at 7' to 7.5' sandy silt, 7.5' to 8', medium sand, brown, wet, no stain, no odor				0
			SM SP	Sandy silt, brown, wet, no stain, no odor				0
10			ML	TD 12'				0
15								
20								