

GO WIRELINE LLC

RADIAL BOND LOG

Company Chevron

Well Johnson C32-735

Field Wattenberg

County Weld

State Colorado

Location: API #: 05-123-49295

Other Services NONE

Permanent Datum Ground Level Elevation 4775

Log Measured From KB

Drilling Measured From KB

Elevation K.B. 4805' D.F. 4775' G.L. 4775'

Date 11-NOV-2022

Run Number One

Depth Driller 17322 FT

Depth Logger 7276'

Bottom Logged Interval 7278'

Top Log Interval Surface

Open Hole Size 8.5"

Type Fluid Water

Density / Viscosity 8.34 lb/gal

Max. Recorded Temp. 245°

Estimated Cement Top 1130'

Time Well Ready ROA

Time Logger on Bottom 12:48

Equipment Number 24

Location Greeley, CO

Recorded By E. Decker

Witnessed By A. Dockins

dsat112222

Borehole Record

Tubing Record

Run Number Bit From To Size Weight From To

Casing Record

Surface String 9.625" 36" 1934 FT

Prod. String 5.5" 17" 17262 FT

Production String

Inner

<<< Fold Here >>>

All interpretations are opinions based on inferences from electrical or other measurements and we cannot and do not guarantee the accuracy or correctness of any interpretation, and we shall not, except in the case of gross or willful negligence on our part, be liable or responsible for any loss, costs, damages, or expenses incurred or sustained by anyone resulting from any interpretation made by any of our officers, agents or employees. These interpretations are also subject to our general terms and conditions set out in our current Price Sheet.

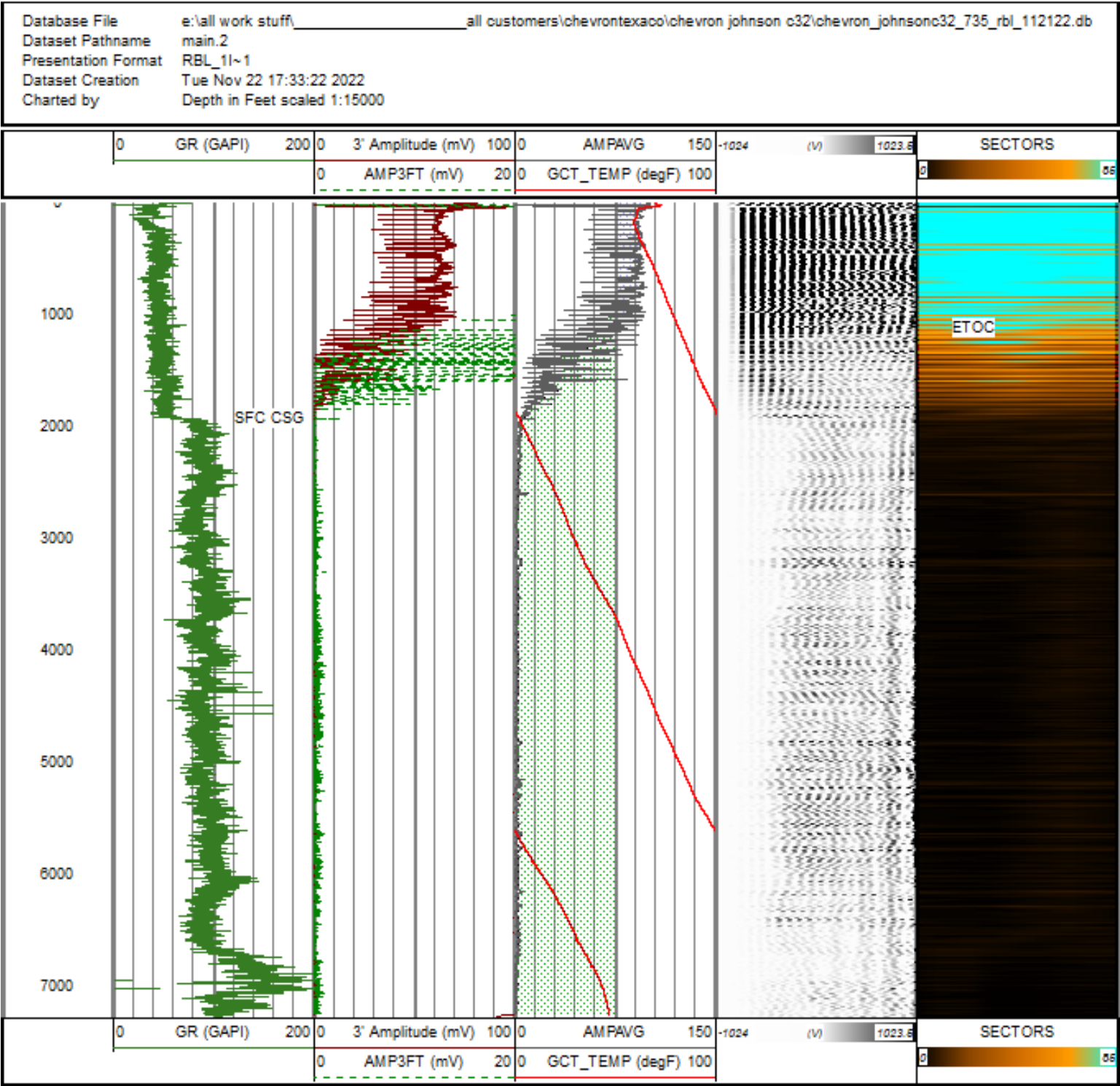
Comments

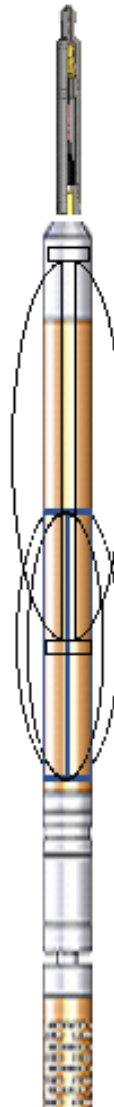
Correlated to Marker Joint @ 6,305.9'

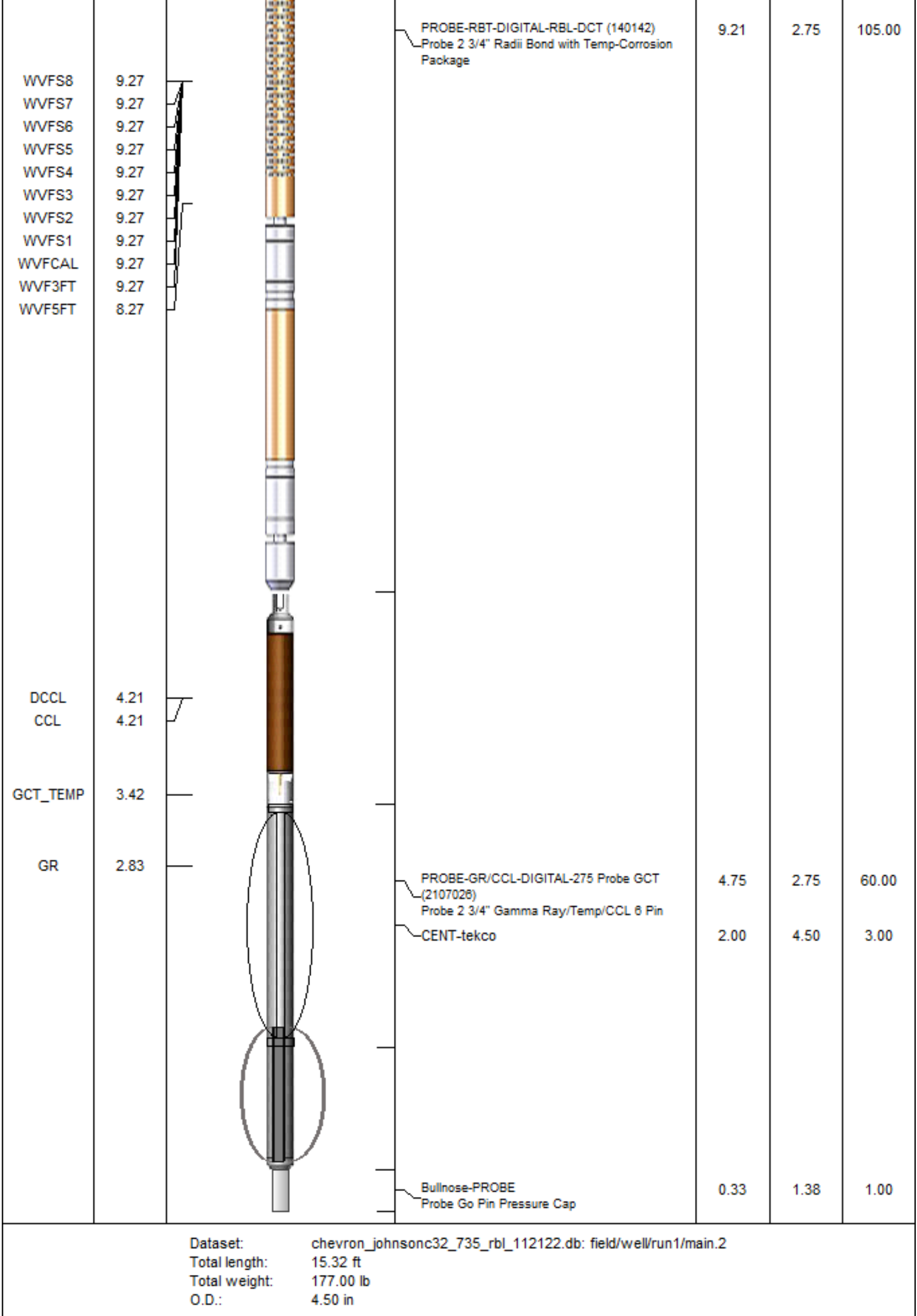
Estimated cement top @ 1130'

Ran with 2200 PSI

Thank You for choosing Go Wireline, LLC

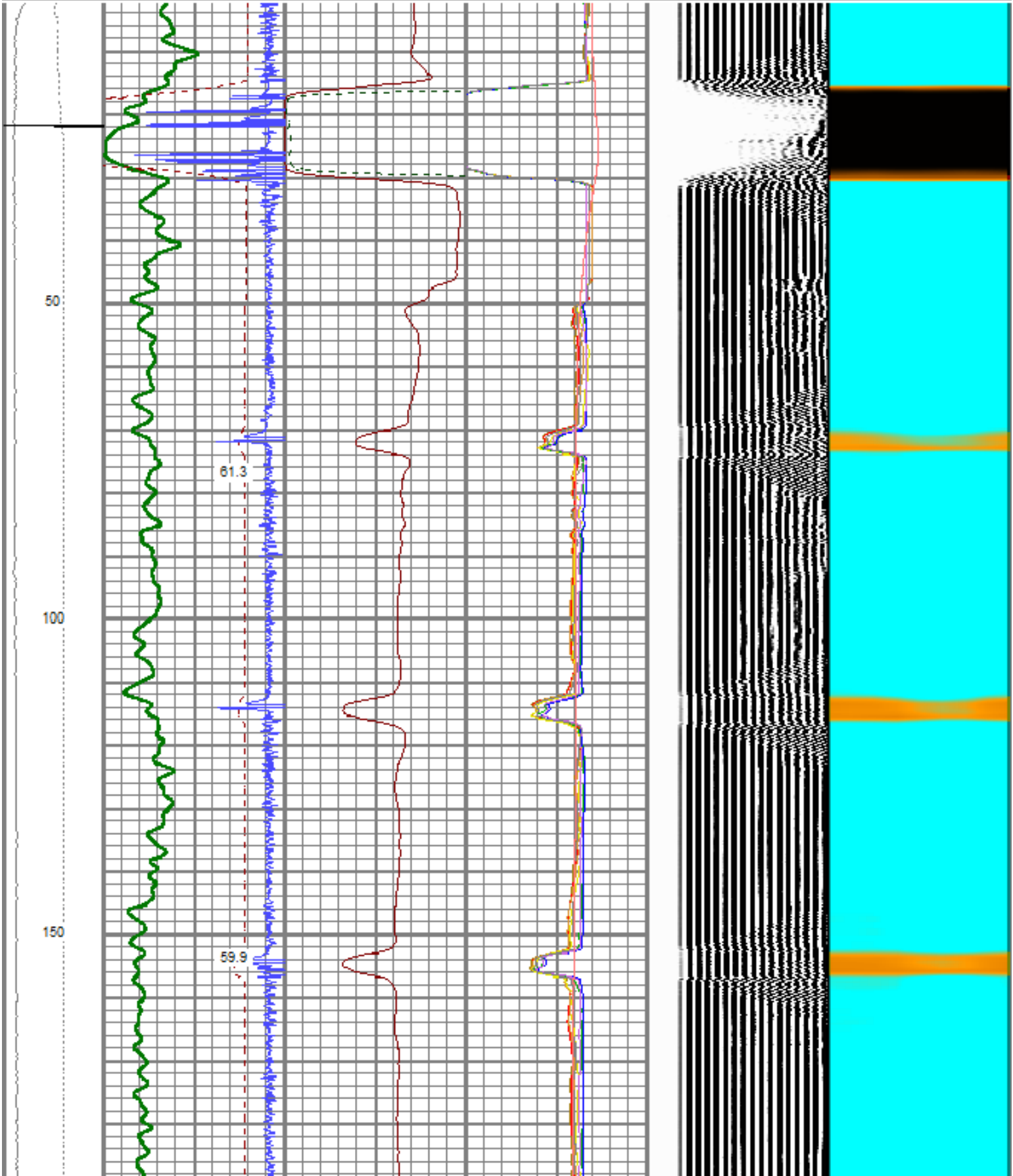


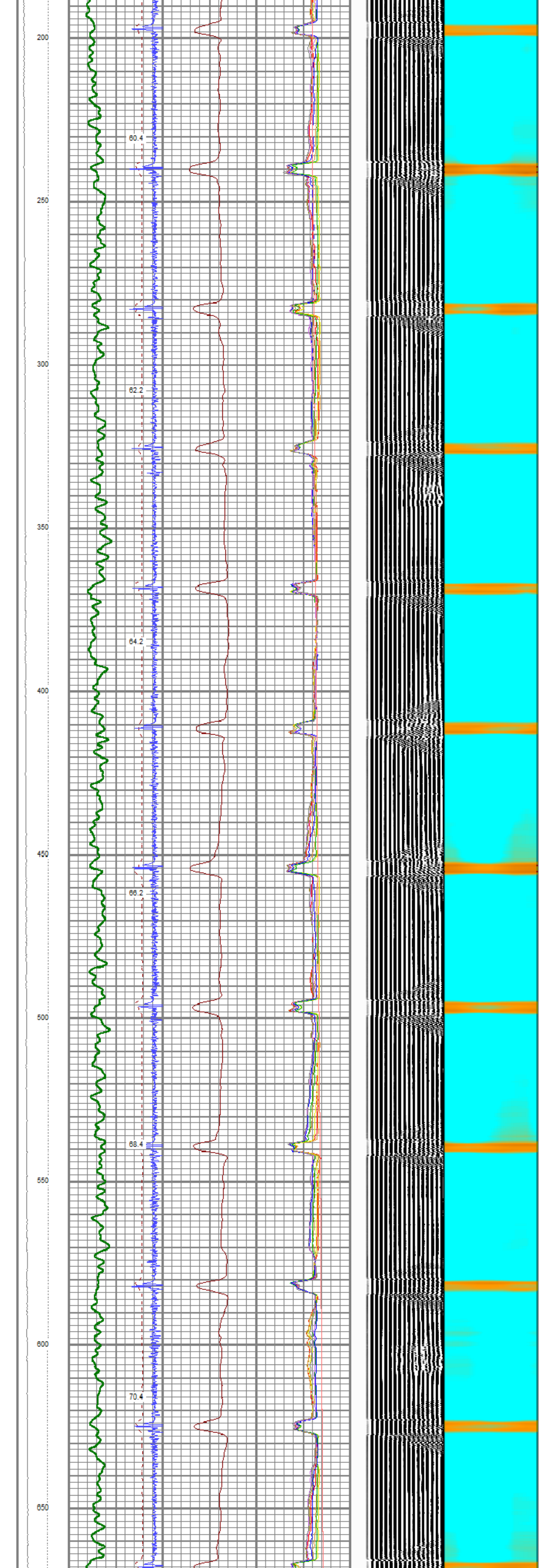
Sensor	Offset (ft)	Schematic	Description	Length (ft)	O.D. (in)	Weight (lb)
TEMP	11.57		Cable Head-Titan_144 1 7/16" Titan Cable Head	1.03	1.44	2.00
			CENT-Overbody	2.00	4.50	3.00

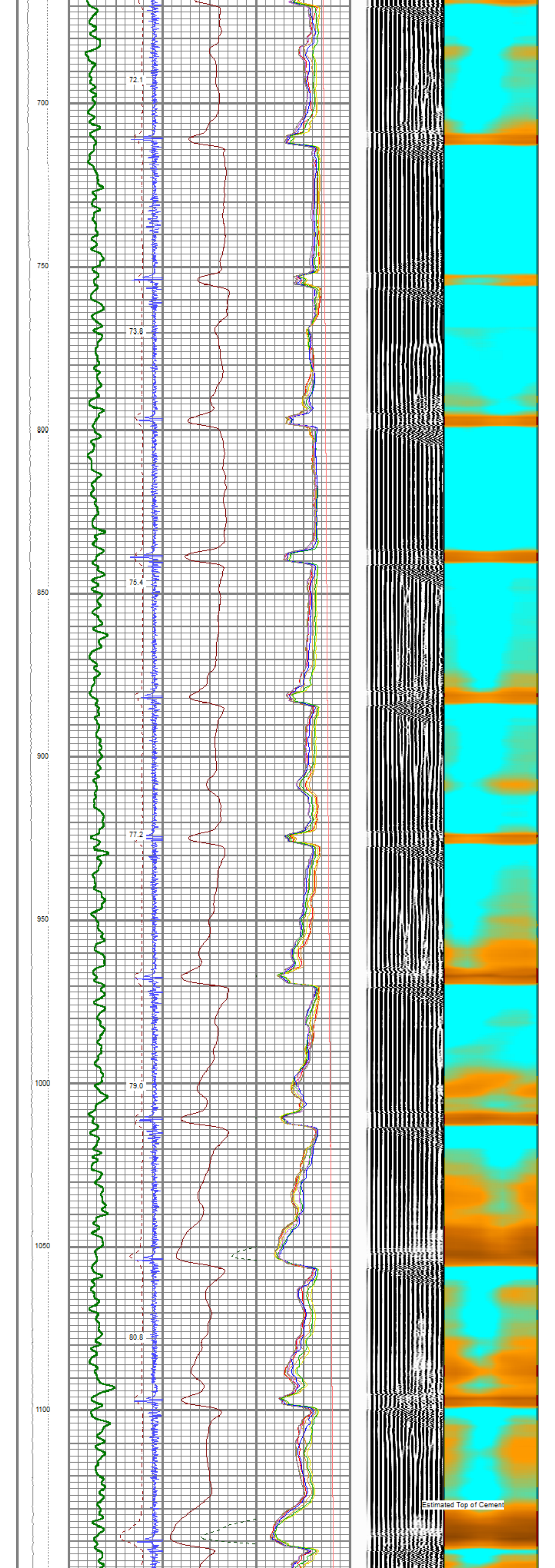


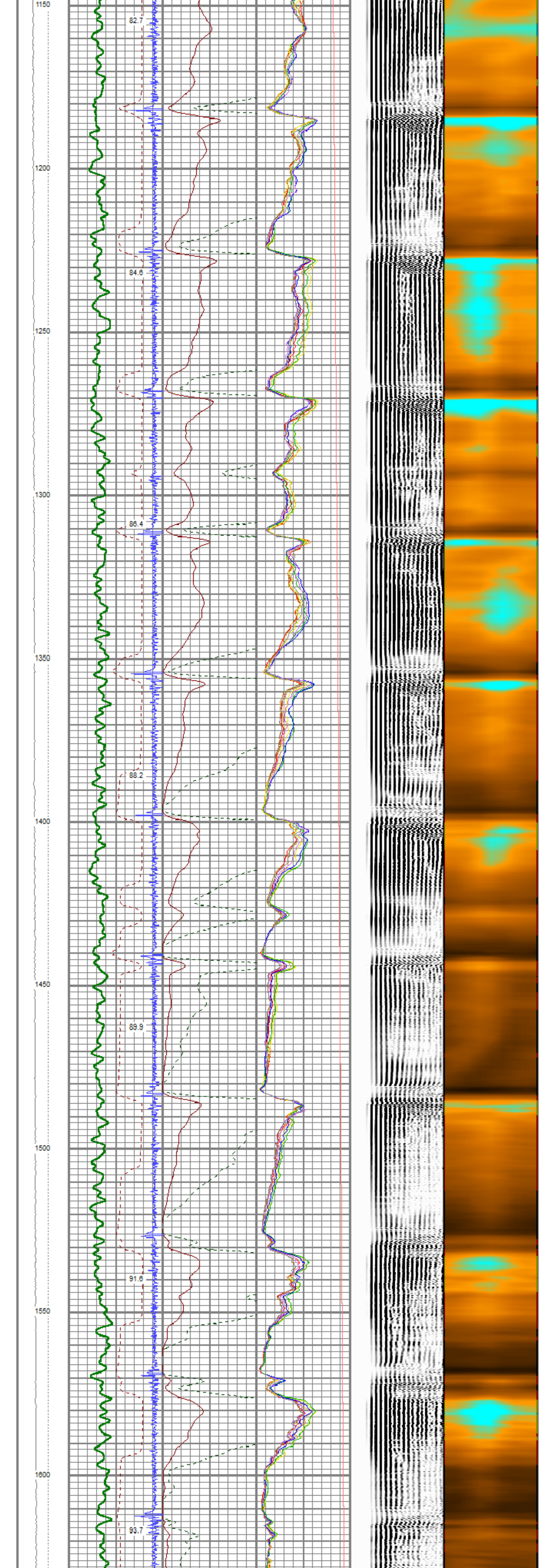
Database File	e:\all work stuff\all customers\chevrontexaco\chevron johnson c32\chevron_johnsonc32_735_rbl_112122.db
Dataset Pathname	main.2
Presentation Format	RBL_AL~1
Dataset Creation	Tue Nov 22 17:33:22 2022
Charted by	Depth in Feet scaled 1:240

LTEN	0	Gamma Ray (GAPI) 150	0	3' Amplitude (mV) 100	0	AMPS1	150	200	WVF5FT (usec) 1200	SECTORS
0	(lb) 1000	420	TT3FT (usec) 220	3' Amplified Amplitude	0	AMPS2	150		(V)	0
					0	AMPS3	150			
LSPD					0	AMPS4	150			
(ft/min)					0	AMPS5	150			
500	-500				0	AMPS6	150			
0	DCCL () 1				0	AMPS7	150			
					0	AMPS8	150			
					0	GCT_TEMP (degF) 100				

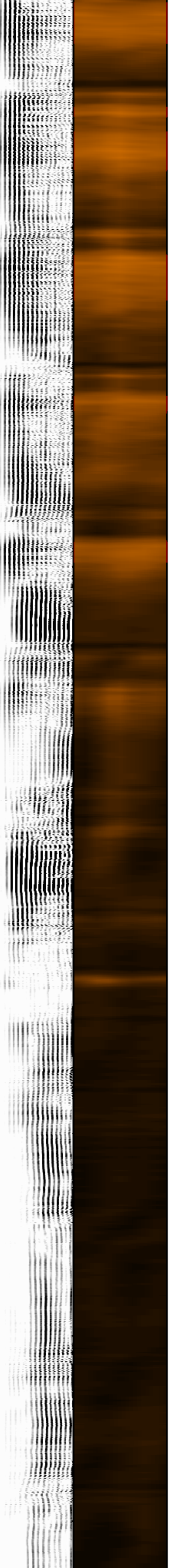
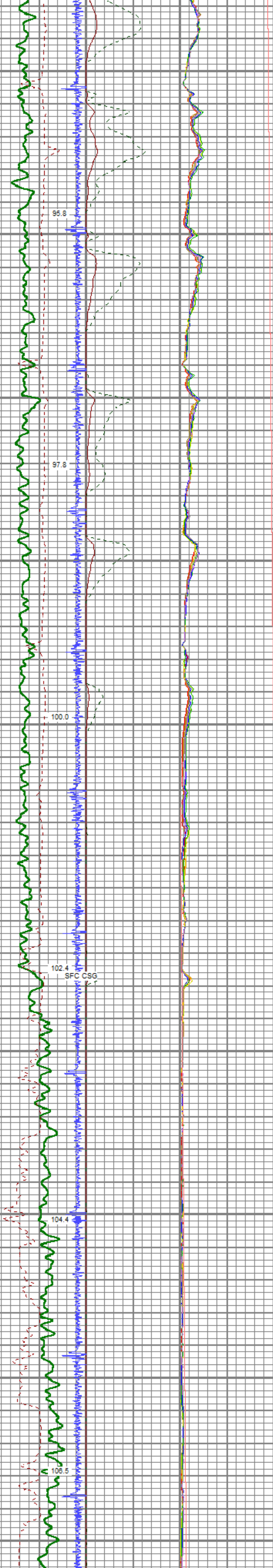








1650
1700
1750
1800
1850
1900
1950
2000
2050
2100



2150

2200

2250

2300

2350

2400

2450

2500

2550

108.6

110.6

112.6

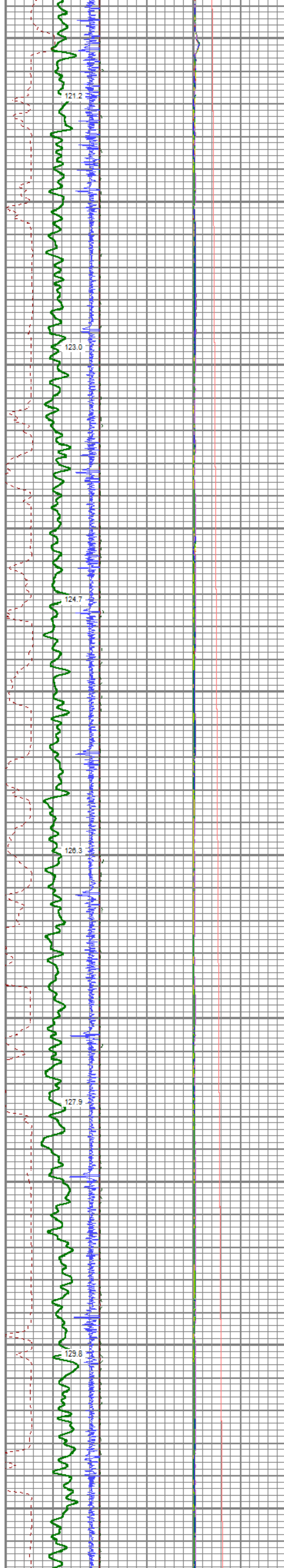
114.8

117.0

119.1

108.6 110.6 112.6 114.8 117.0 119.1

2600
2650
2700
2750
2800
2850
2900
2950
3000
3050



3100

3150

3200

3250

3300

3350

3400

3450

3500

131.8

133.7

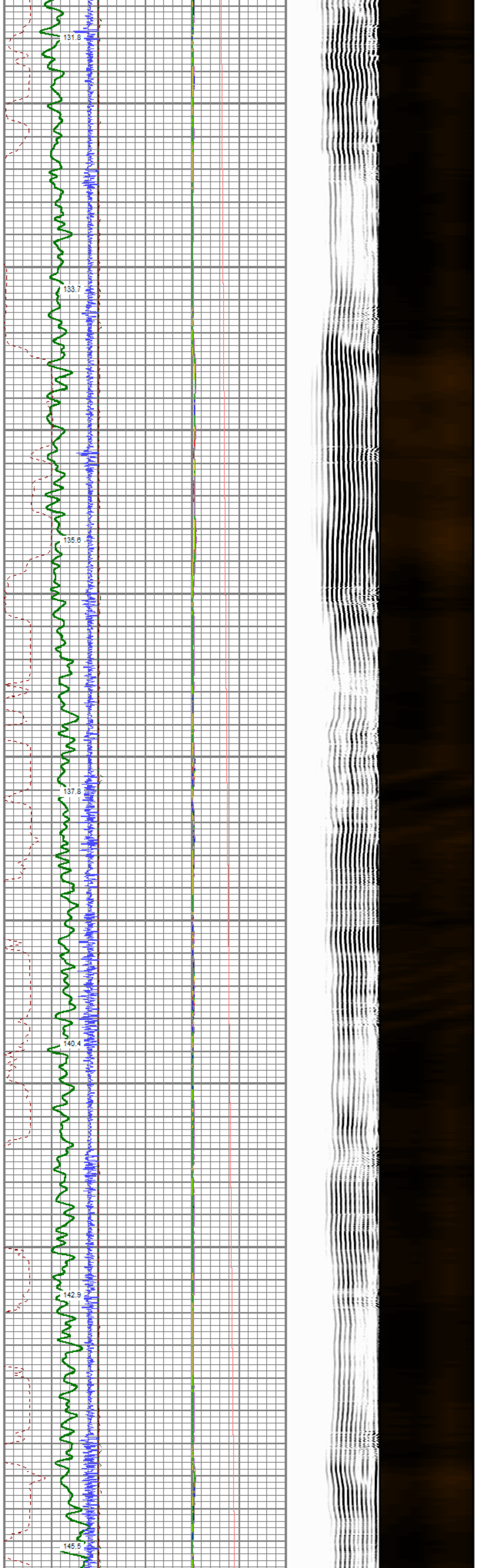
135.6

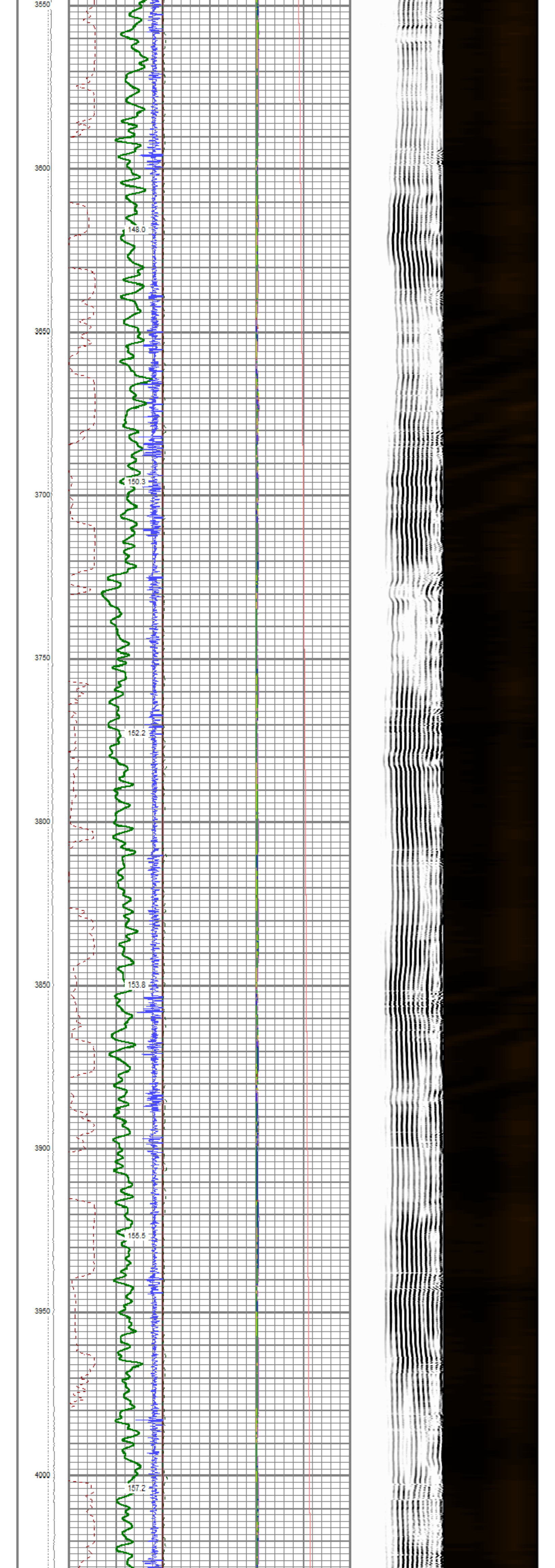
137.8

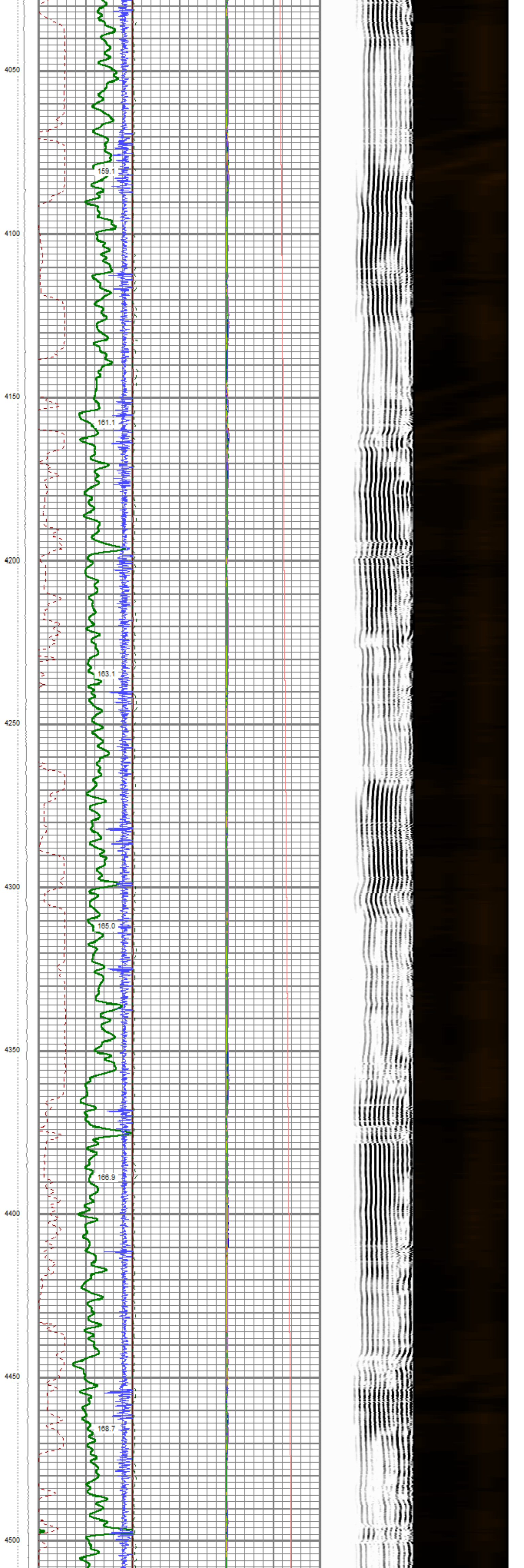
140.4

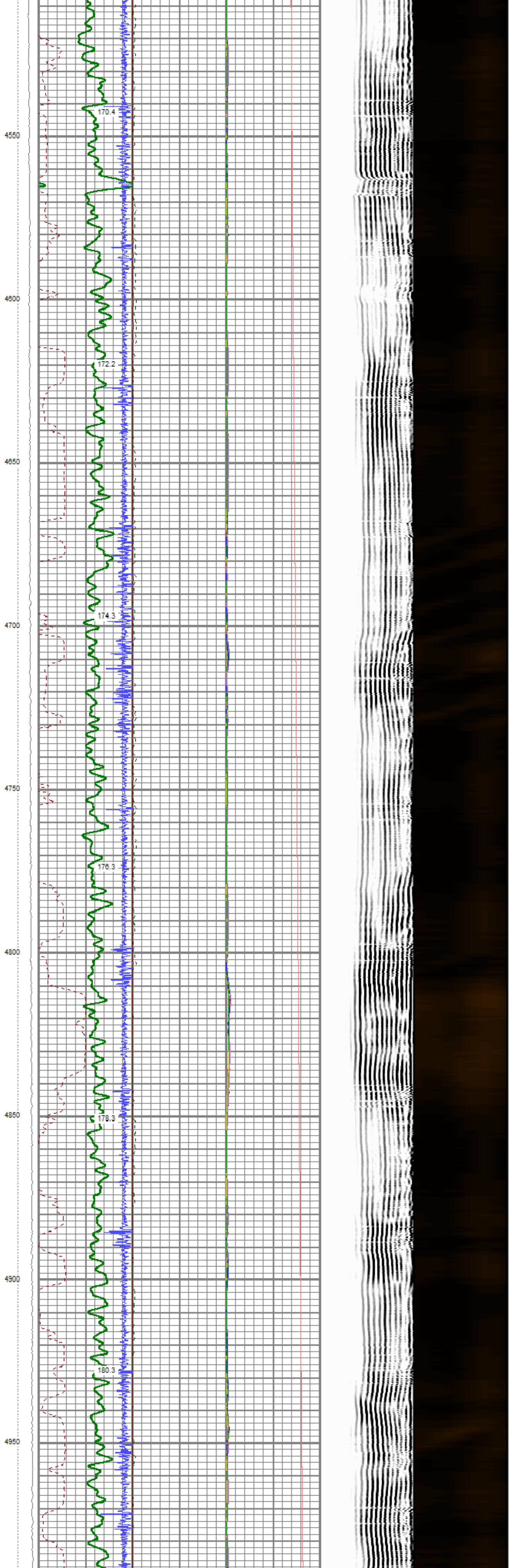
142.9

145.5

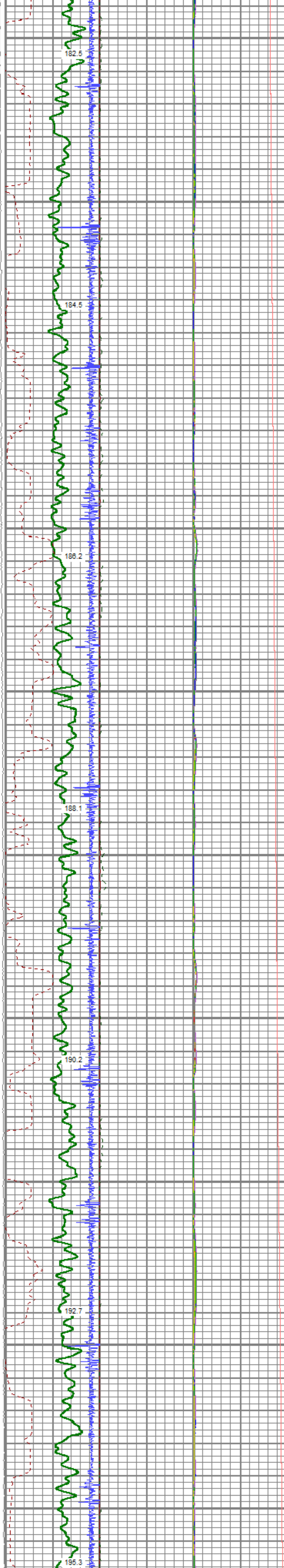




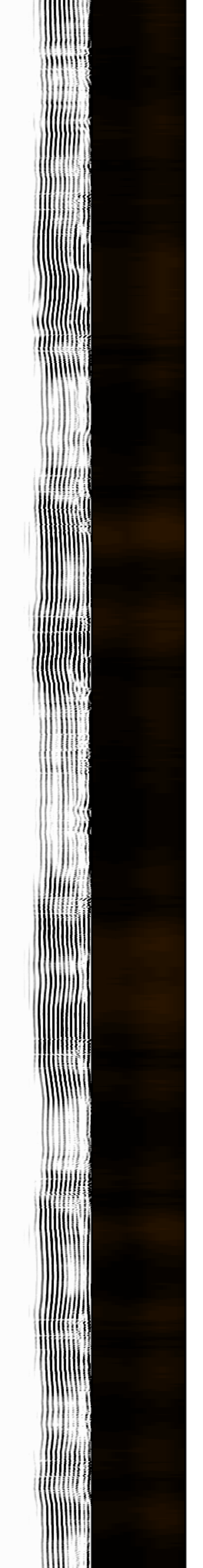
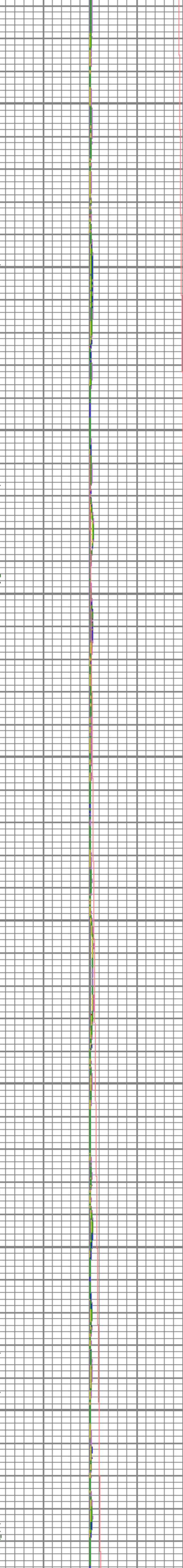
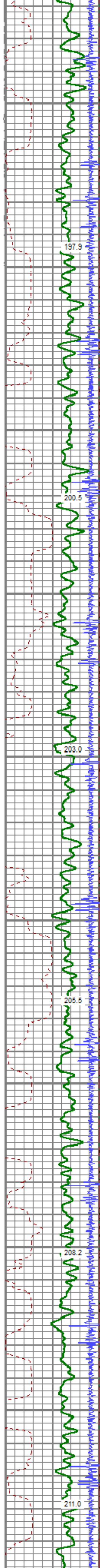


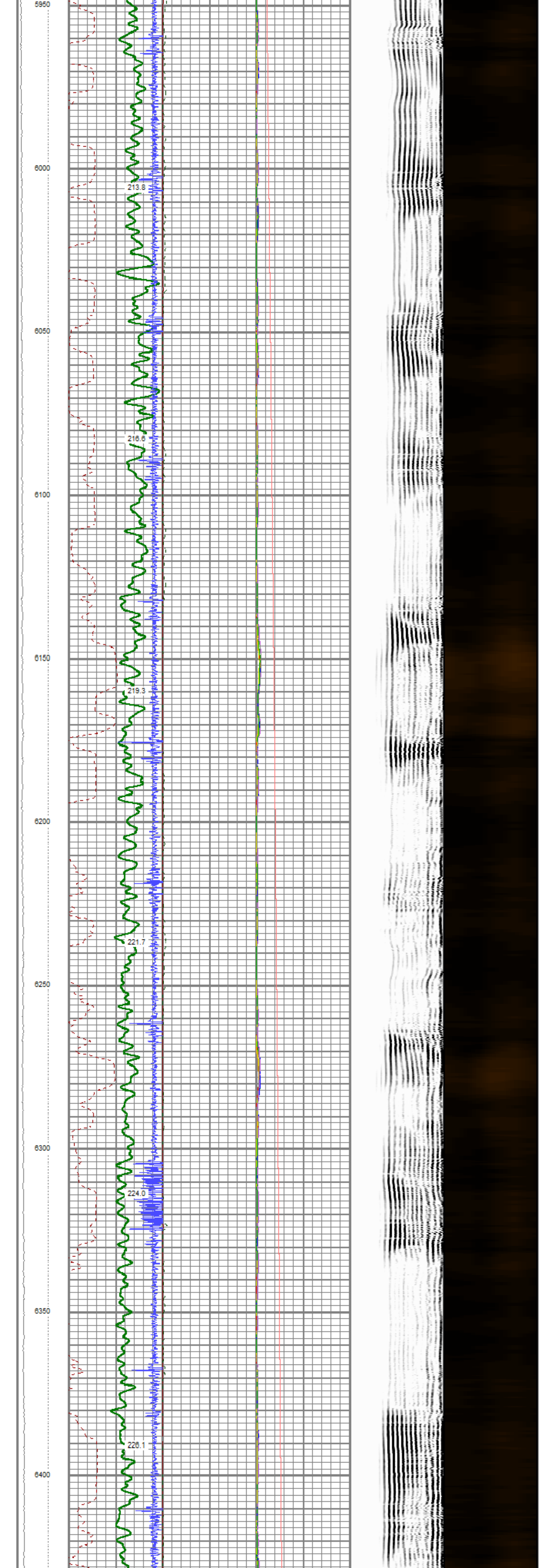


5000
5050
5100
5150
5200
5250
5300
5350
5400
5450

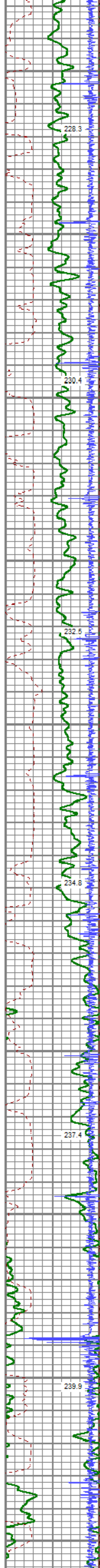


5500
5550
5600
5650
5700
5750
5800
5850
5900





6450
6500
6550
6600
6650
6700
6750
6800
6850
6900



228.3

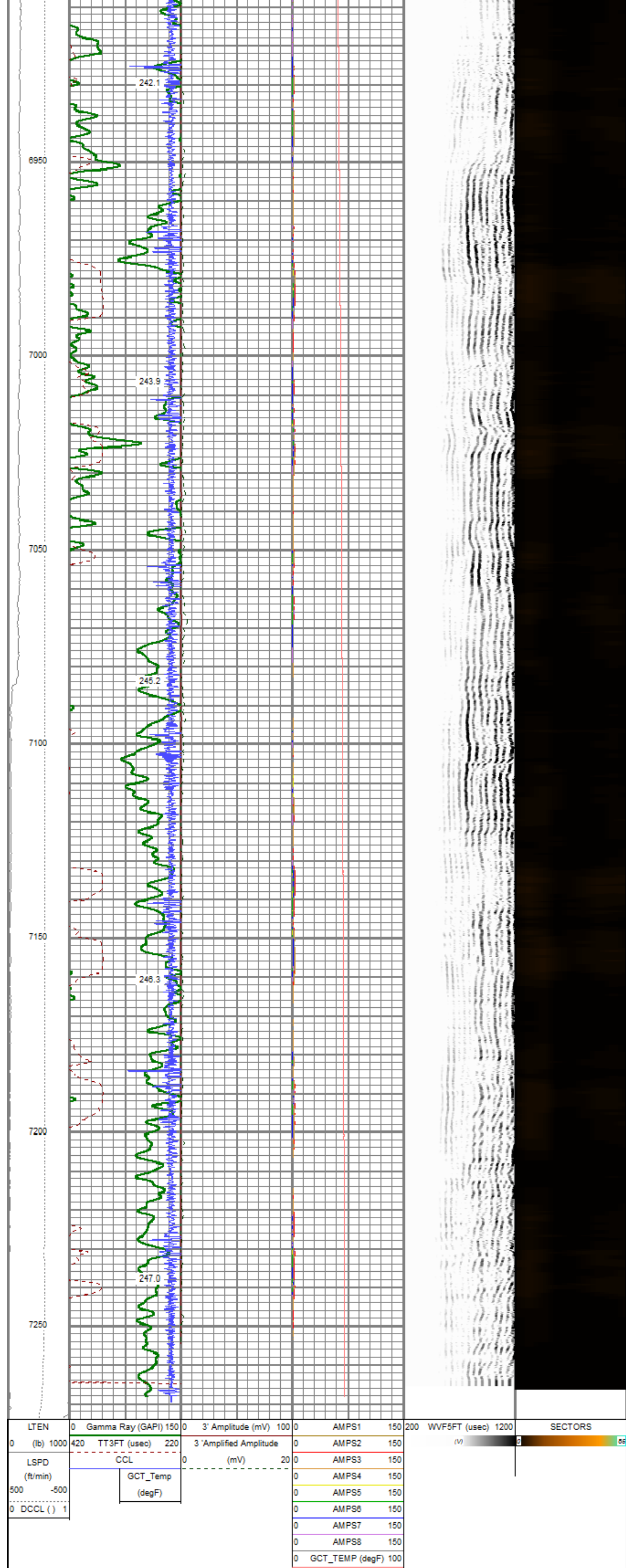
230.4

232.5

234.8

237.4

239.9



Calibration Report			
Database File	e:\all work stuff\all customers\chevrontexaco\chevron johnson c32\chevron_johnsonc32_735_rbl_112122.db		
Dataset Pathname	main.2		
Dataset Creation	Tue Nov 22 17:33:22 2022		
Gamma Ray Calibration Report			
Serial Number:	2107028		
Tool Model:	275 Probe GCT		
Performed:	Wed Sep 21 08:38:08 2022		
Calibrator Value:	200.0	GAPI	
Background Reading:	43.9	cps	
Calibrator Reading:	289.1	cps	
Sensitivity:	0.8881	GAPI/cps	
Temperature Calibration Report			
Serial Number:	140142		
Tool Model:	RBL-DCT		
Performed:	Tue Nov 15 11:02:58 2022		

	Reference		Reading	
Low Reference:	0.00	degF	0.00	degF
High Reference:	1.00	degF	1.00	degF
Gain:	1.00			
Offset:	0.00			
Delta Spacing	1			