

GO WIRELINE LLC

RADIAL BOND LOG

Company Chevron

Well Johnson C32-725

Field Wattenberg

County Weld

State Colorado

Location: API #: 05-123-49291

Other Services CNL LOG

Permanent Datum Ground Level Elevation 4774'

Log Measured From KB KB 4804'

Drilling Measured From KB G.L. 4774'

Date 11-NOV-2022

Run Number One

Depth Driller 17487 FT

Depth Logger 7295'

Bottom Logged Interval 7296'

Top Log Interval Surface

Open Hole Size 8.5"

Type Fluid Water

Density / Viscosity 8.34 lb/gal

Max. Recorded Temp. 245°

Estimated Cement Top 1340'

Time Well Ready ROA

Time Logger on Bottom 15:00

Equipment Number 24

Location Greeley, CO

Recorded By E. Decker

Witnessed By A. Rockins

dsat112222

Borehole Record

Bit From To

Size To

Weight From To

Casing Record

Surface String 9.625" 36" Top Surface Bottom 1938.7'

Prot. String 5.5" 17# Surface 17471 FT

Production String

Inner

<<< Fold Here >>>

All interpretations are opinions based on inferences from electrical or other measurements and we cannot and do not guarantee the accuracy or correctness of any interpretation, and we shall not, except in the case of gross or willful negligence on our part, be liable or responsible for any loss, costs, damages, or expenses incurred or sustained by anyone resulting from any interpretation made by any of our officers, agents or employees. These interpretations are also subject to our general terms and conditions set out in our current Price Sheet.

Comments

Correlated to Marker Joint @ 6,375.5'

Estimated cement top @ 1340'

Ran Log with 2200 PSI

Thank you for choosing GO Wireline, LLC

Database File e:\all work stuff\all customers\chevrontexaco\chevron johnson c32\chevron_johnson_c32_725_rbl_112122_db

Dataset Pathname JOHNSON725/RBL/MAIN

Presentation Format RBL_11~1

Dataset Creation Tue Nov 22 17:00:52 2022

Charted by Depth in Feet scaled 1:15000

0 GR (GAPI) 200

0 3' Amplitude (mV) 100

0 AMPAVG 150

-1024 (V) 1023.6

SECTORS

0 AMP3FT (mV) 20

0 GCT_TEMP (degF) 100

0 1000 2000 3000 4000 5000 6000 7000

SFC CSG

EDCTS

0 GR (GAPI) 200

0 3' Amplitude (mV) 100

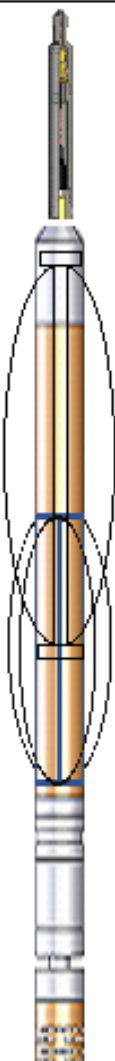
0 AMPAVG 150

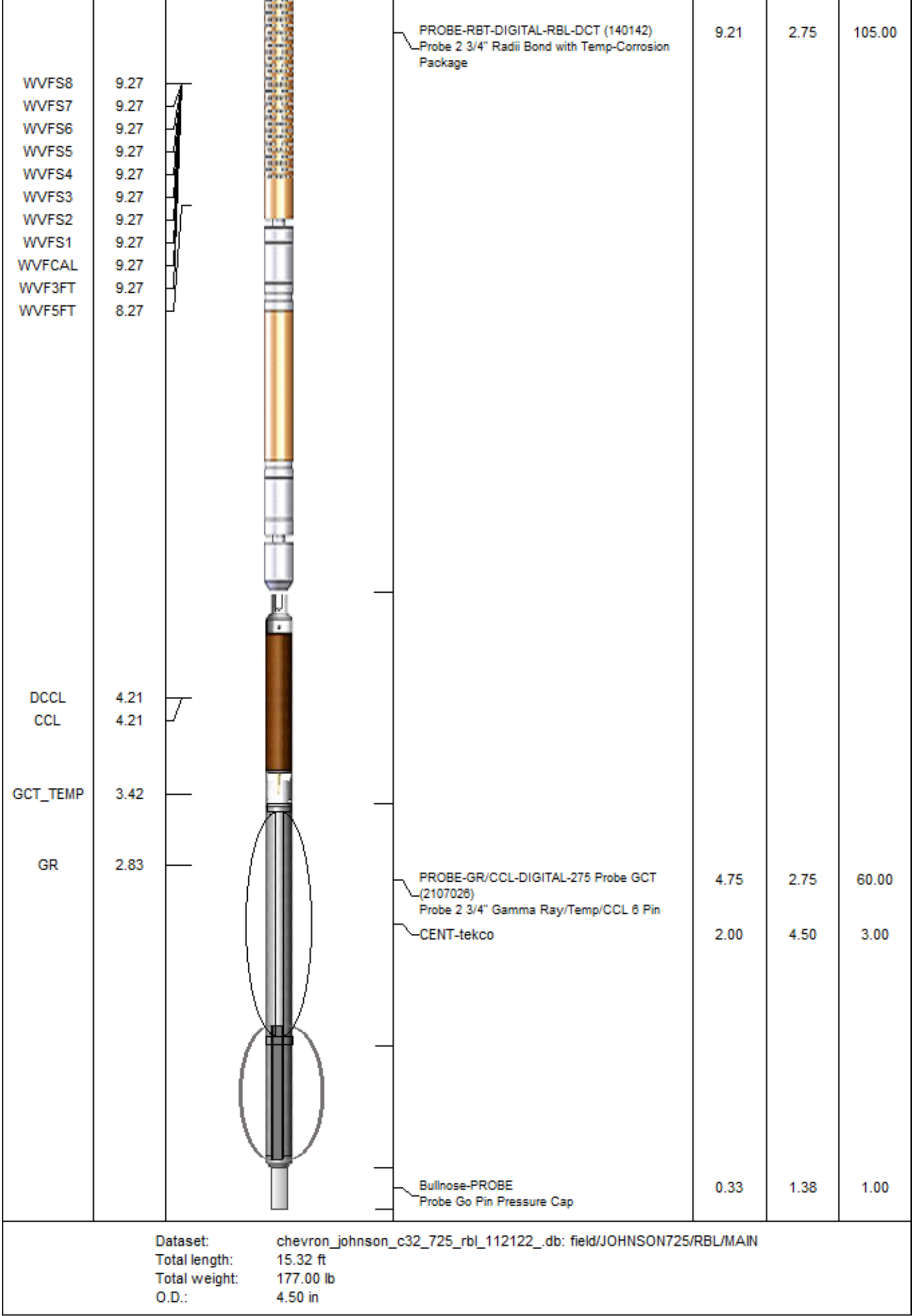
-1024 (V) 1023.6

SECTORS

0 AMP3FT (mV) 20

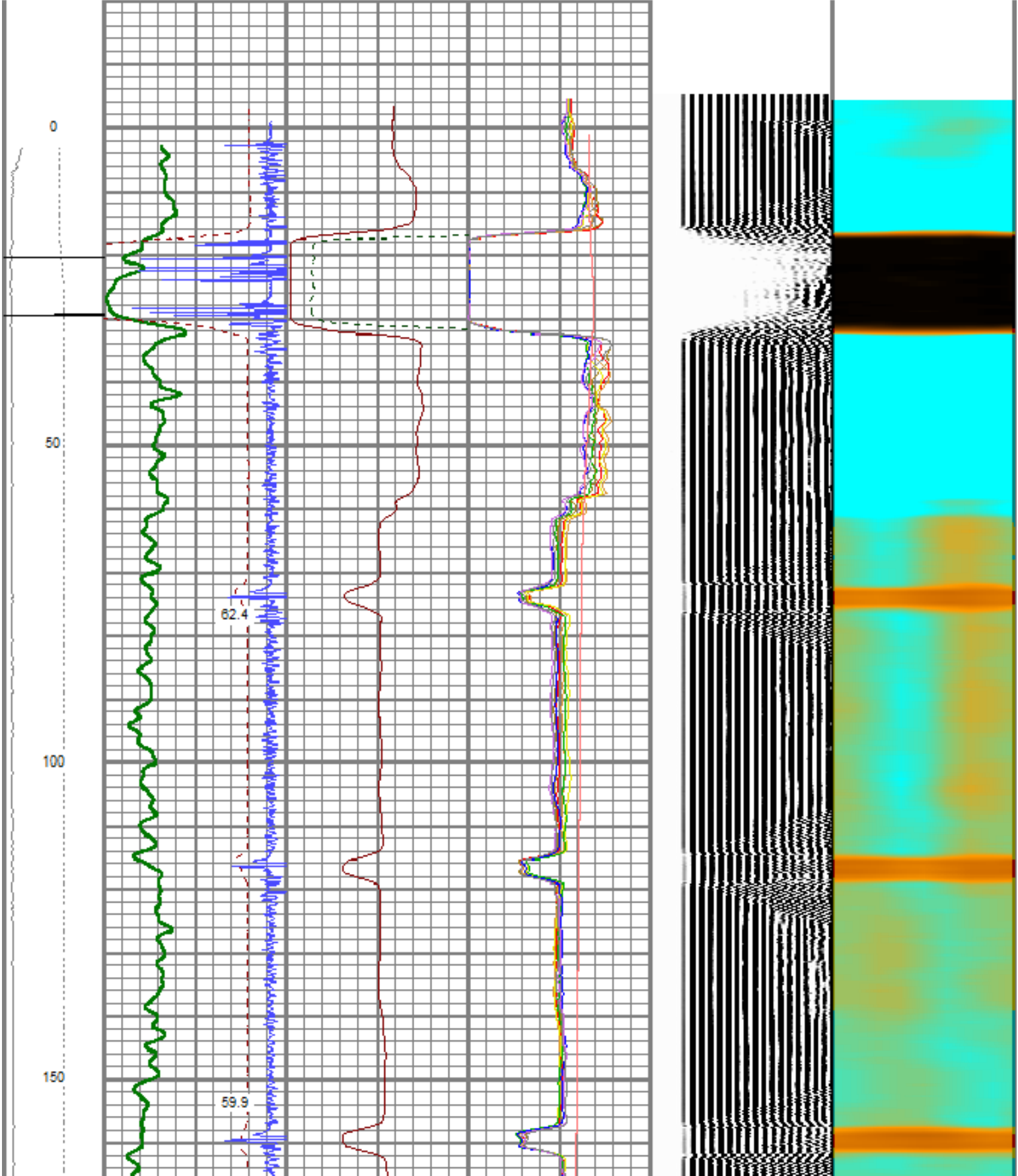
0 GCT_TEMP (degF) 100

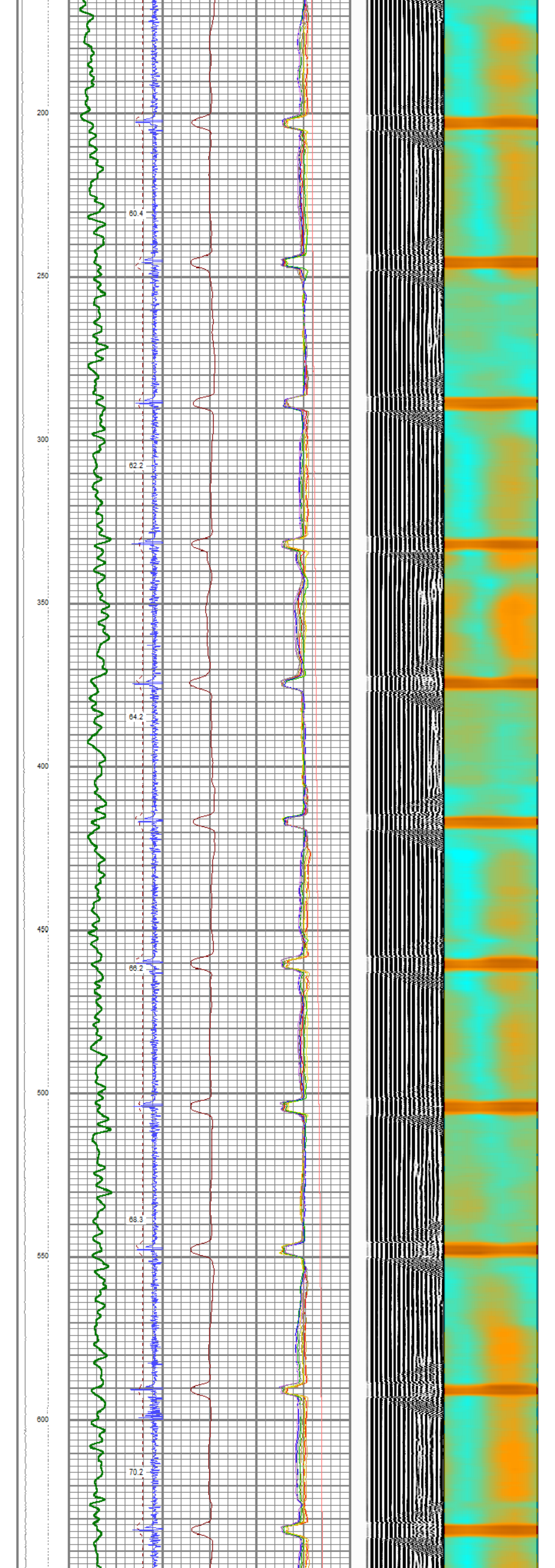
| Sensor | Offset (ft) | Schematic | Description | Length (ft) | O.D. (in) | Weight (lb) |
|--------|-------------|---|--|-------------|-----------|-------------|
| TEMP | 11.57 |  | Cable Head-Titan_144 1 7/16" Titan Cable Head | 1.03 | 1.44 | 2.00 |
| | | | CENT-Overbody | 2.00 | 4.50 | 3.00 |

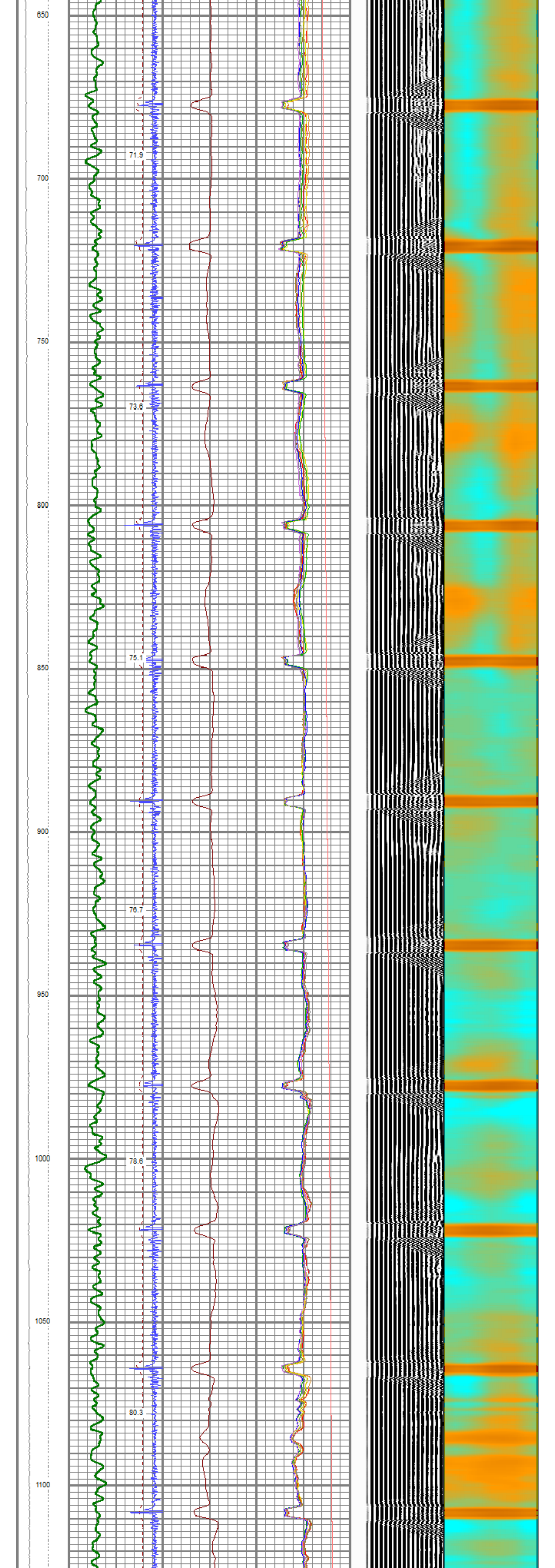


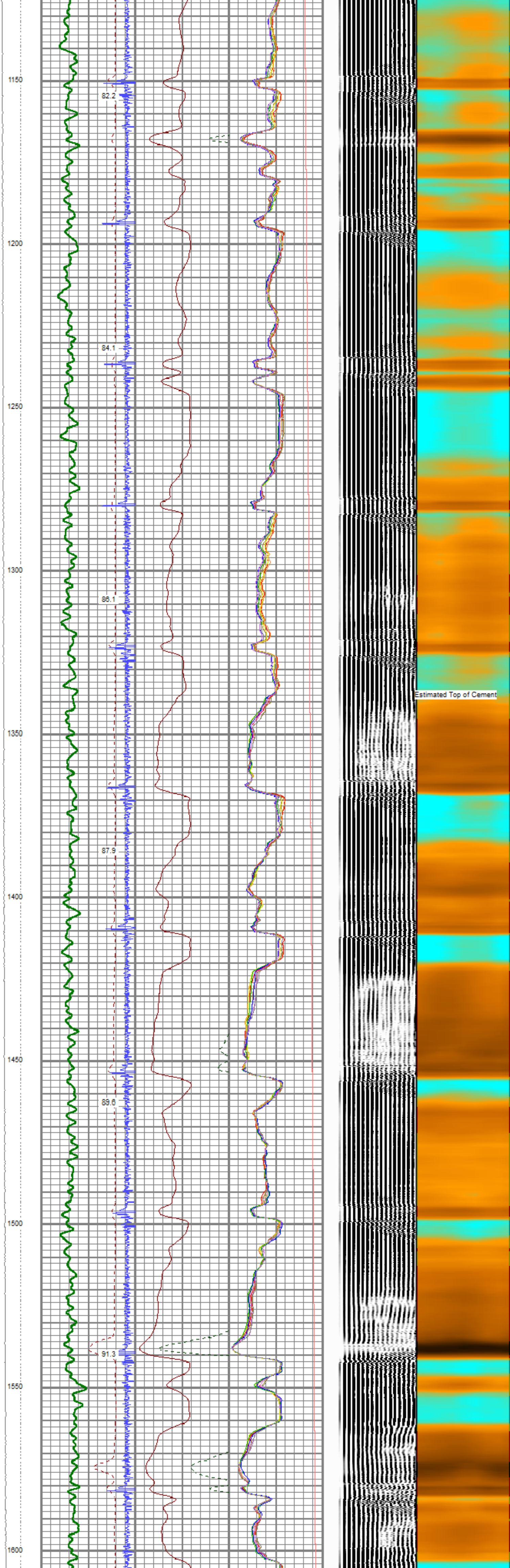
| | |
|---------------------|---|
| Database File | e:\all work stuff\all customers\chevrontexaco\chevron johnson c32\chevron_johnson_c32_725_rbl_112122_db |
| Dataset Pathname | JOHNSON725/RBL/MAIN |
| Presentation Format | RBL_AL~1 |
| Dataset Creation | Tue Nov 22 17:00:52 2022 |
| Charted by | Depth in Feet scaled 1:240 |

| | | | | | | | | | | | | | |
|----------|-----------|------------------|--------------|-----|------------------------|-----|-----------------|-------|-----|-----|---------------|------|---------|
| LTEN | 0 | Gamma Ray (GAPI) | 150 | 0 | 3' Amplitude (mV) | 100 | 0 | AMPS1 | 150 | 200 | WVF5FT (usec) | 1200 | SECTORS |
| 0 | (lb) 1000 | 420 | TT3FT (usec) | 220 | 3' Amplified Amplitude | 0 | AMPS2 | 150 | | | (V) | 0 | 95 |
| LSPD | | | CCL | 0 | (mV) | 20 | AMPS3 | 150 | | | | | |
| (ft/min) | | | GCT_Temp | | | | AMPS4 | 150 | | | | | |
| 500 | -500 | | (degF) | | | | AMPS5 | 150 | | | | | |
| 0 | DCCL () | 1 | | | | | AMPS6 | 150 | | | | | |
| | | | | | | | AMPS7 | 150 | | | | | |
| | | | | | | | AMPS8 | 150 | | | | | |
| | | | | | | | GCT_TEMP (degF) | 100 | | | | | |









1850

1700

1750

1800

1850

1900

1950

2000

2050

93.1

95.2

97.2

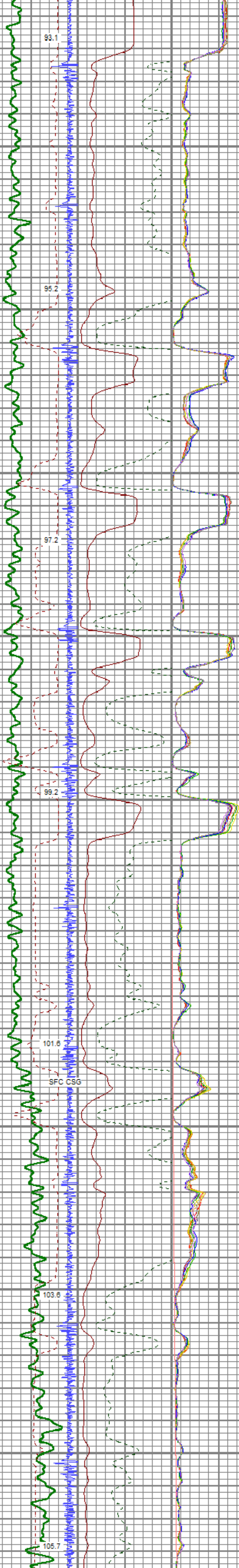
99.2

101.6

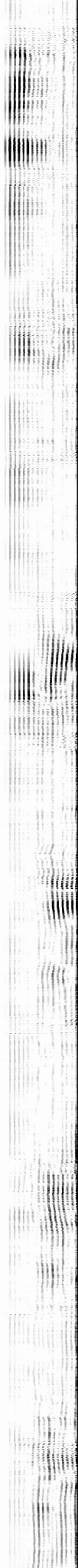
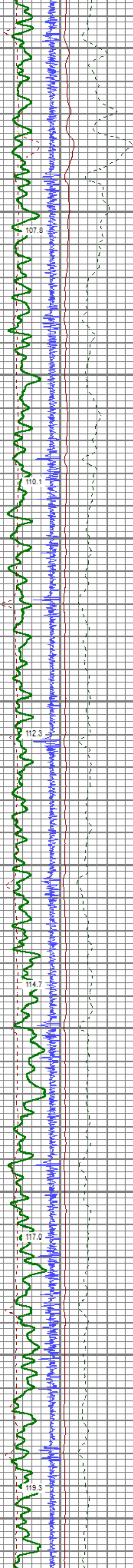
SFC CSG

103.6

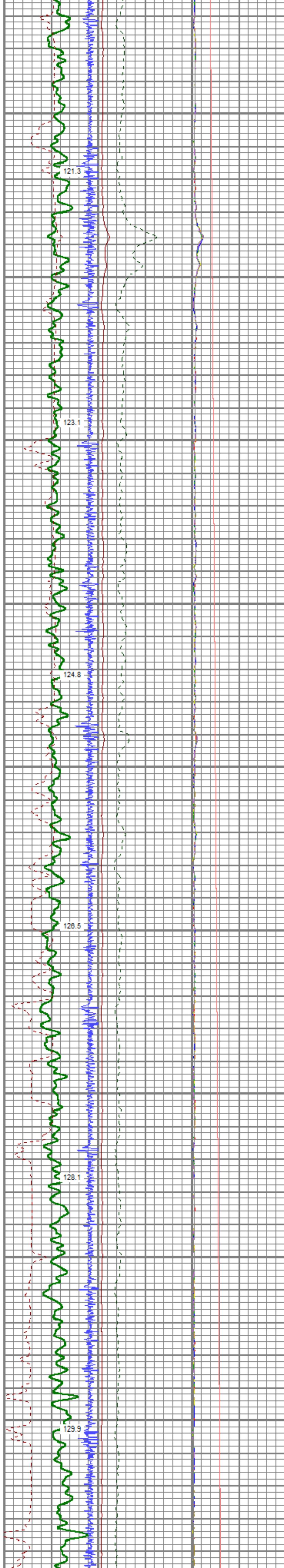
105.7



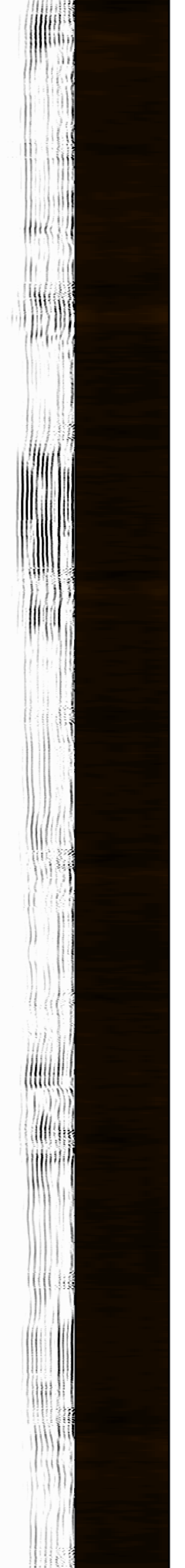
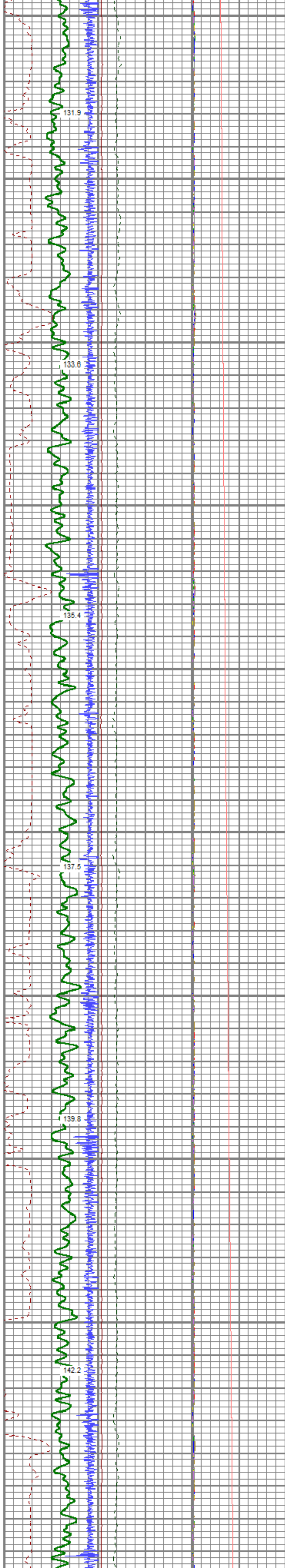
2100
2150
2200
2250
2300
2350
2400
2450
2500
2550

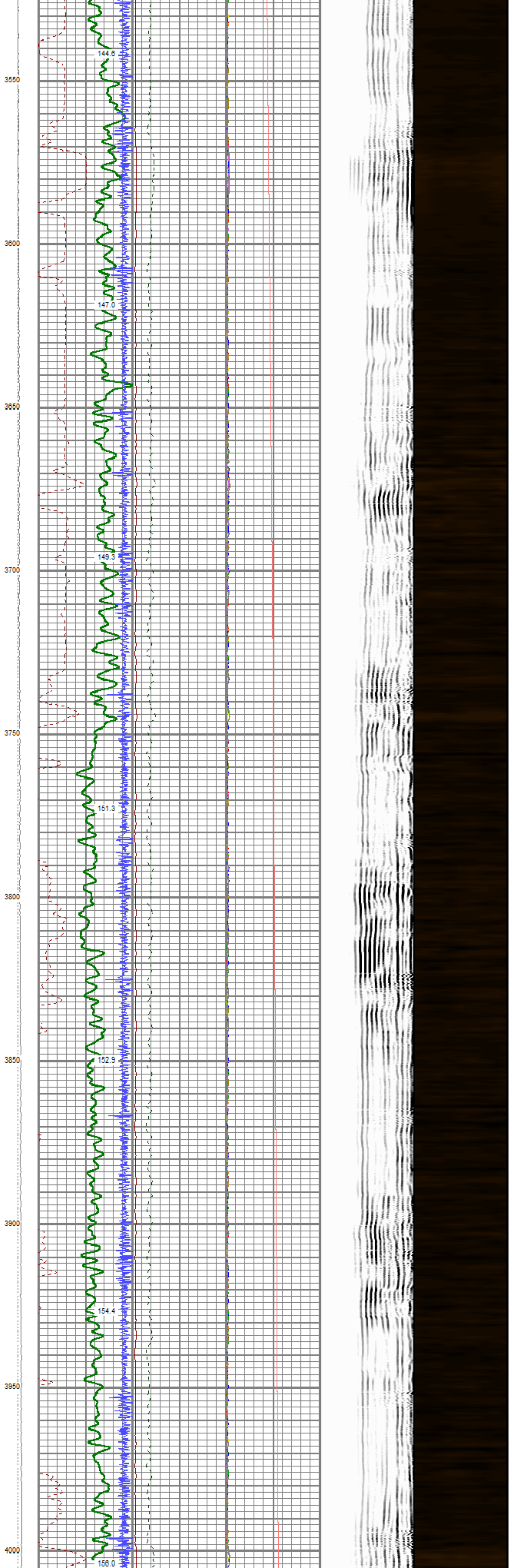


2600
2650
2700
2750
2800
2850
2900
2950
3000

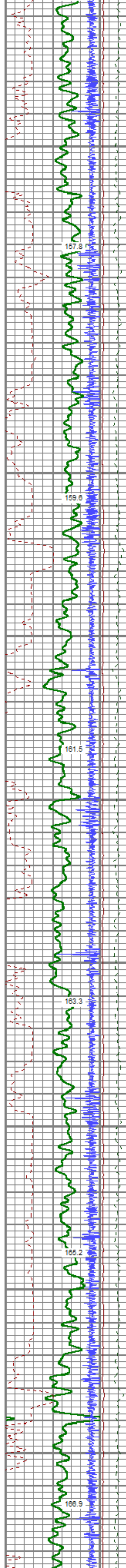


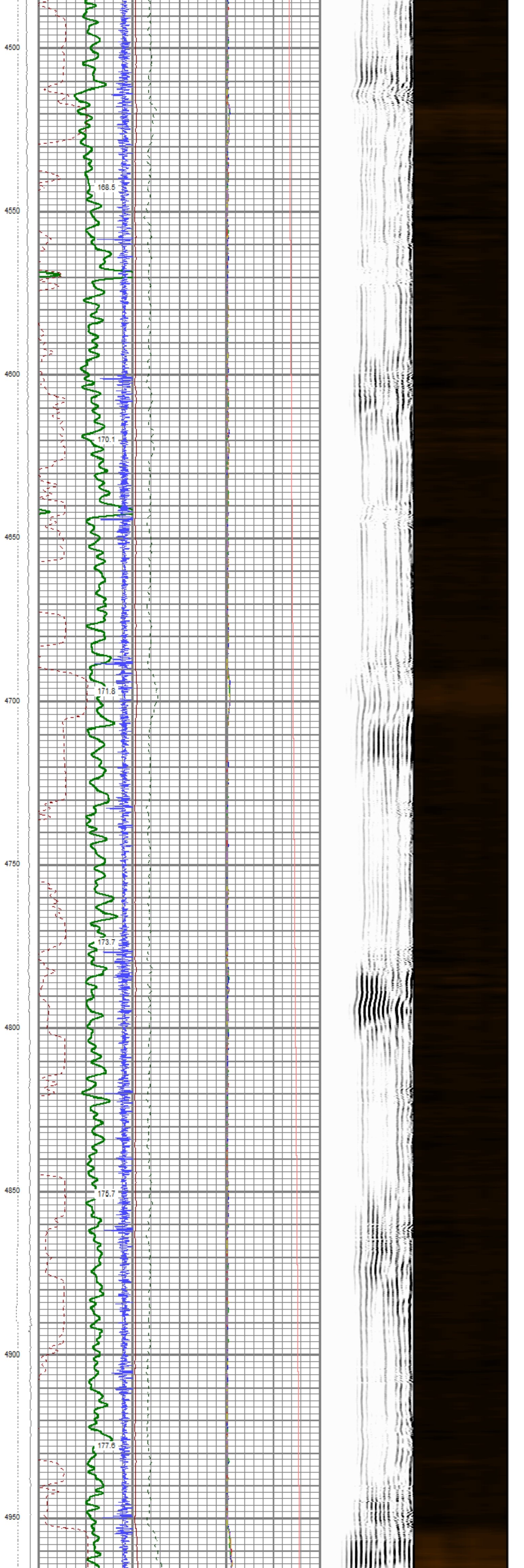
3050
3100
3150
3200
3250
3300
3350
3400
3450
3500



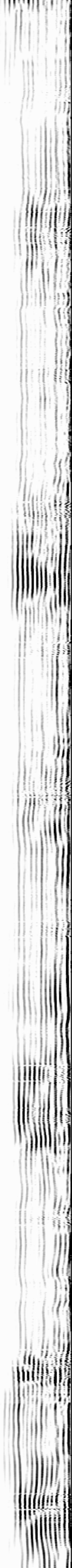
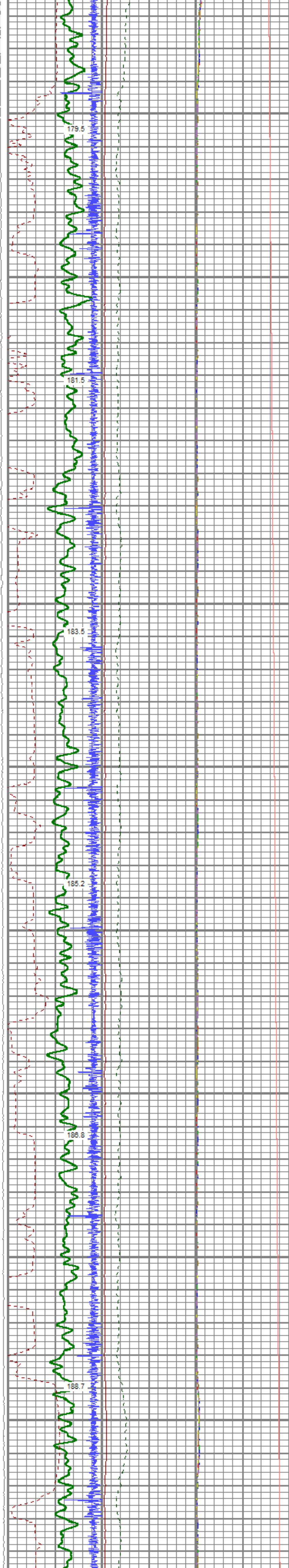


4050
4100
4150
4200
4250
4300
4350
4400
4450

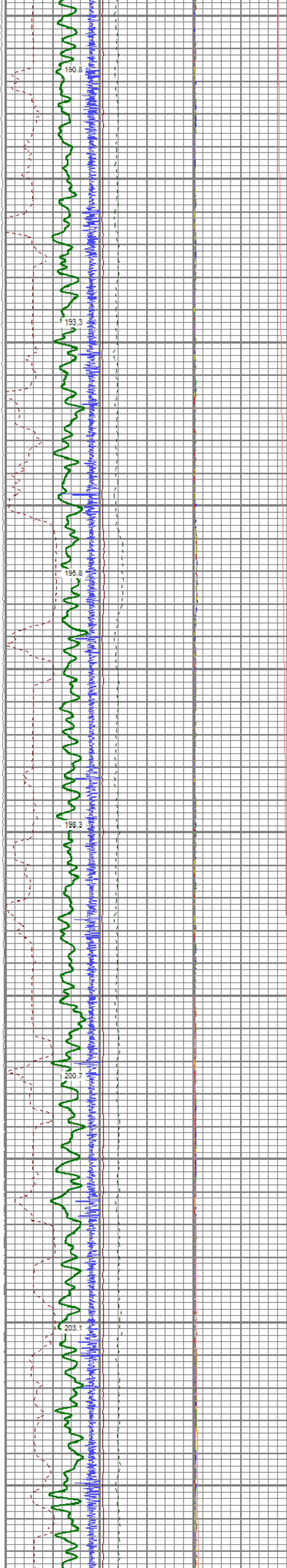




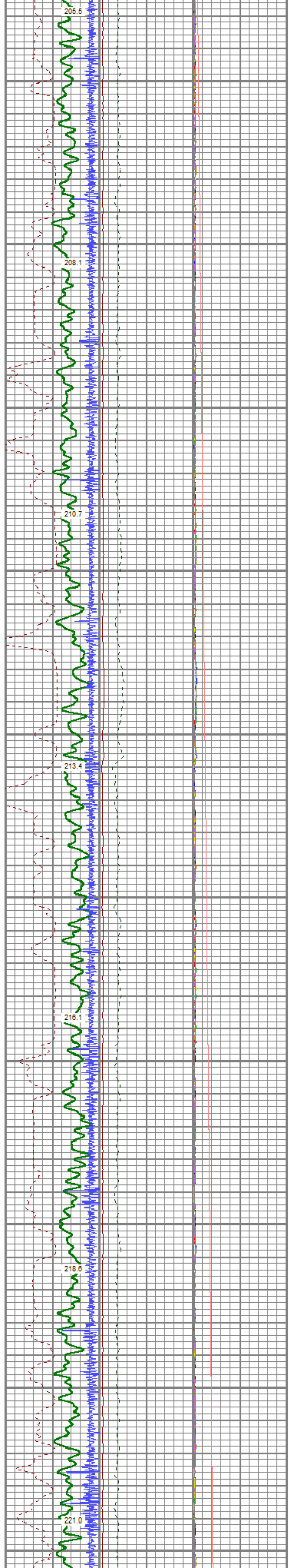
5000
5050
5100
5150
5200
5250
5300
5350
5400



5450
5500
5550
5600
5650
5700
5750
5800
5850
5900



5950
6000
6050
6100
6150
6200
6250
6300
6350
6400



6450

6500

6550

6600

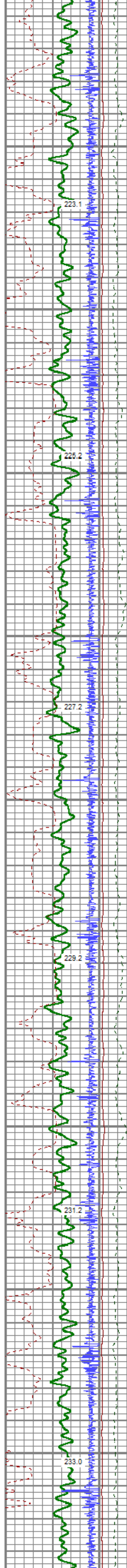
6650

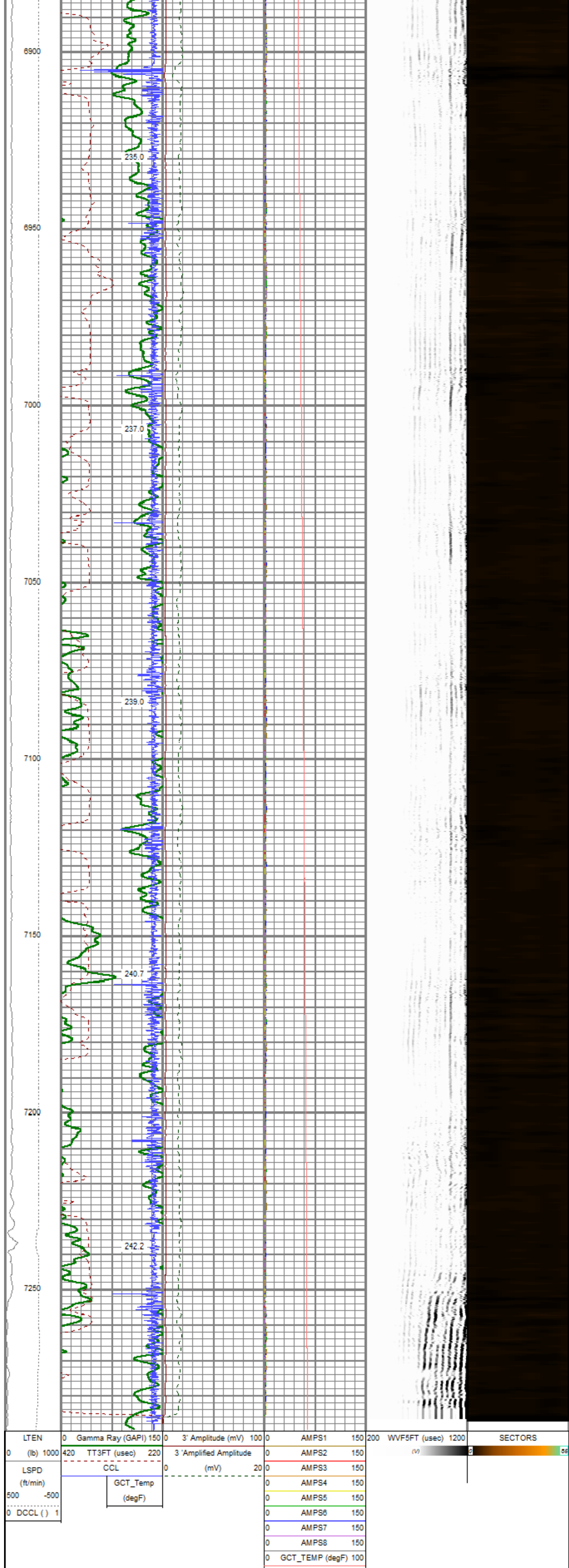
6700

6750

6800

6850





Calibration Report
 Database File: e:\all work stuff\all customers\chevrontexaco\chevron johnson c32\chevron_johnson_c32_725_rbl_112122_db
 Dataset Pathname: JOHNSON725/RBL/MAIN
 Dataset Creation: Tue Nov 22 17:00:52 2022

Gamma Ray Calibration Report

Serial Number: 2107026
 Tool Model: 275 Probe GCT
 Performed: Wed Sep 21 08:38:08 2022

| | | |
|---------------------|--------|----------|
| Calibrator Value: | 200.0 | GAPI |
| Background Reading: | 43.9 | cps |
| Calibrator Reading: | 269.1 | cps |
| Sensitivity: | 0.8881 | GAPI/cps |

| | | | | | |
|--------------------------------|--------------------------|------|---------|------|--|
| Temperature Calibration Report | | | | | |
| Serial Number: | 140142 | | | | |
| Tool Model: | RBL-DCT | | | | |
| Performed: | Tue Nov 15 11:02:56 2022 | | | | |
| | Reference | | Reading | | |
| Low Reference: | 0.00 | degF | 0.00 | degF | |
| High Reference: | 1.00 | degF | 1.00 | degF | |
| Gain: | 1.00 | | | | |
| Offset: | 0.00 | | | | |
| Delta Spacing | 1 | | | | |

| | | | |
|------------------------------|--|----------|--|
| Calibration Report | | | |
| Database File | e:\all work stuff\all customers\chevrontexaco\chevron johnson c32\chevron_johnsonc32_725_rbl_112122.db | | |
| Dataset Pathname | main.2 | | |
| Dataset Creation | Tue Nov 22 16:37:00 2022 | | |
| Gamma Ray Calibration Report | | | |
| Serial Number: | 2107026 | | |
| Tool Model: | 275 Probe GCT | | |
| Performed: | Wed Sep 21 08:38:08 2022 | | |
| Calibrator Value: | 200.0 | GAPI | |
| Background Reading: | 43.9 | cps | |
| Calibrator Reading: | 269.1 | cps | |
| Sensitivity: | 0.8881 | GAPI/cps | |

| | | | | | |
|--------------------------------|--------------------------|------|---------|------|--|
| Temperature Calibration Report | | | | | |
| Serial Number: | 140142 | | | | |
| Tool Model: | RBL-DCT | | | | |
| Performed: | Tue Nov 15 11:02:56 2022 | | | | |
| | Reference | | Reading | | |
| Low Reference: | 0.00 | degF | 0.00 | degF | |
| High Reference: | 1.00 | degF | 1.00 | degF | |
| Gain: | 1.00 | | | | |
| Offset: | 0.00 | | | | |
| Delta Spacing | 1 | | | | |