



1050

1100

1150

1200

1250

1300

1350

1400

1450

81.6

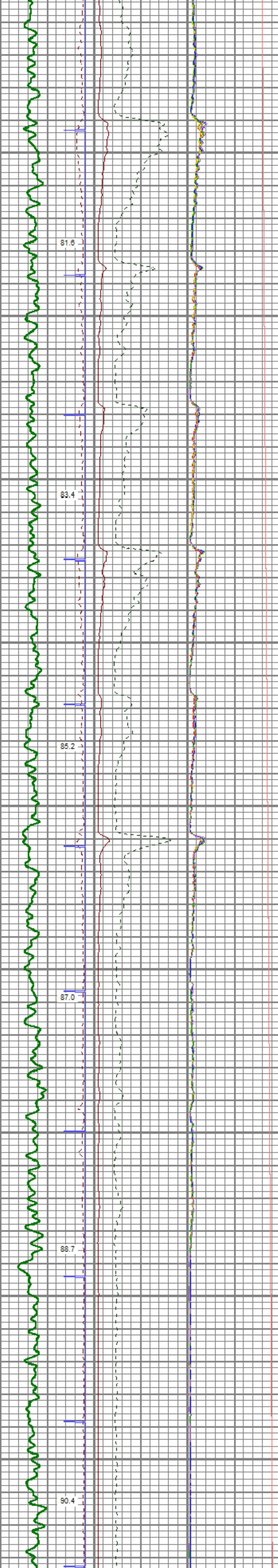
83.4

85.2

87.0

88.7

90.4



1500  
1550  
1600  
1650  
1700  
1750  
1800  
1850  
1900  
1950



92.1

94.0

96.1

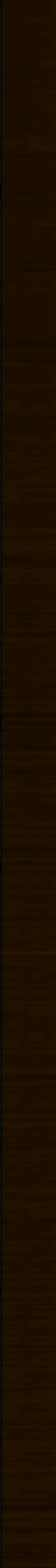
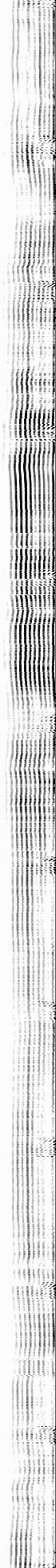
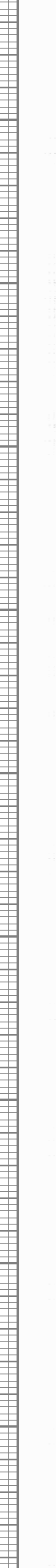
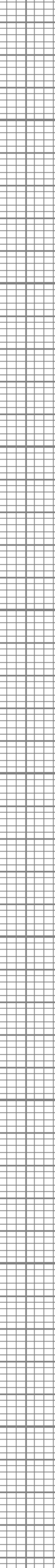
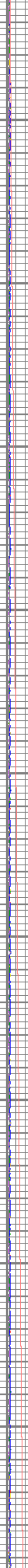
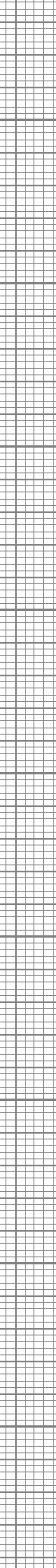
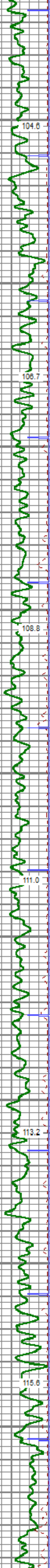
98.1

100.2

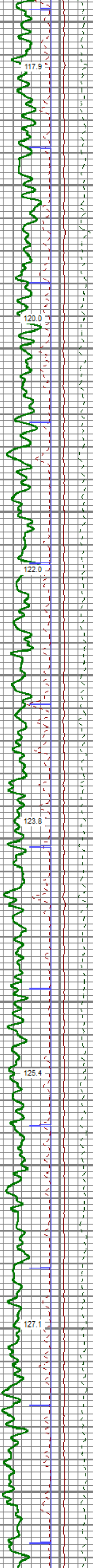
102.6



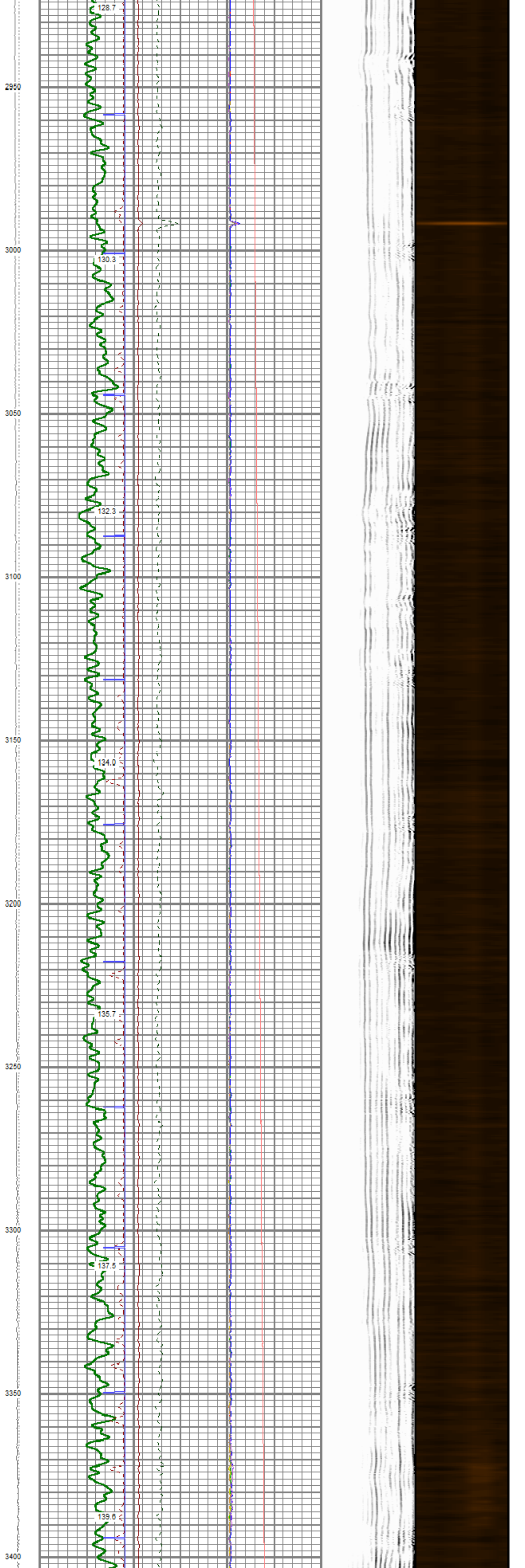
2000  
2050  
2100  
2150  
2200  
2250  
2300  
2350  
2400



2450  
2500  
2550  
2600  
2650  
2700  
2750  
2800  
2850  
2900









3450

3500

3550

3600

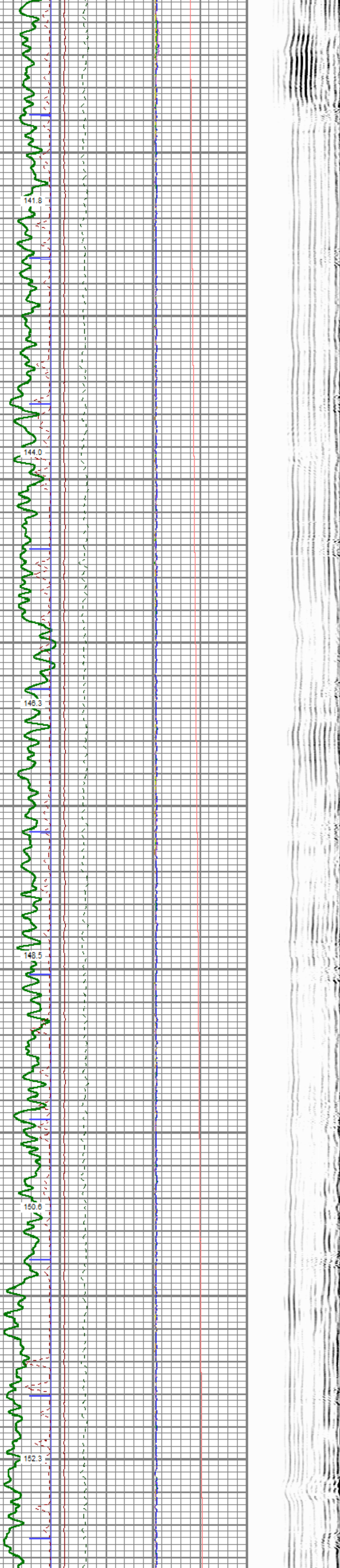
3650

3700

3750

3800

3850



3900

3950

4000

4050

4100

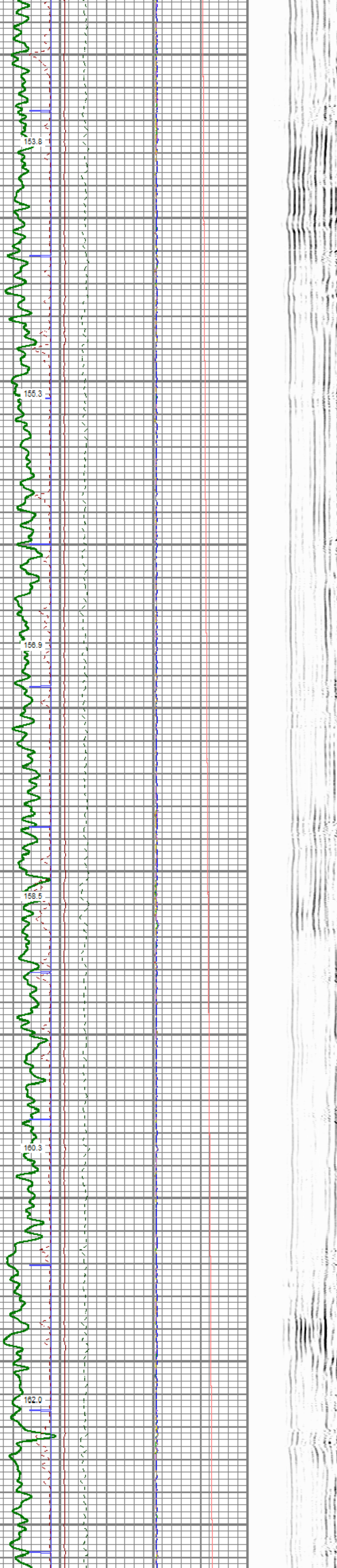
4150

4200

4250

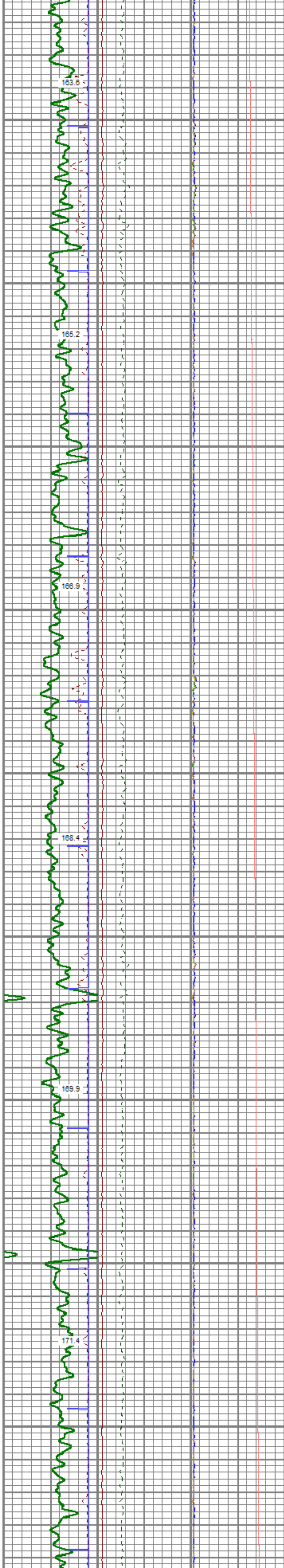
4300

4350

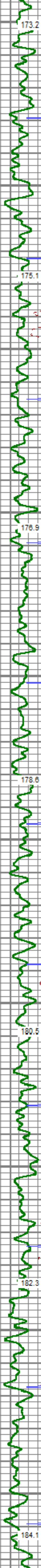




4400  
4450  
4500  
4550  
4600  
4650  
4700  
4750  
4800



4850  
4900  
4950  
5000  
5050  
5100  
5150  
5200  
5250  
5300





5350  
5400  
5450  
5500  
5550  
5600  
5650  
5700  
5750  
5800

185.7

187.3

189.2

191.2

193.6

195.9



5850

198.2

5900

200.5

5950

6000

202.7

6050

205.0

6100

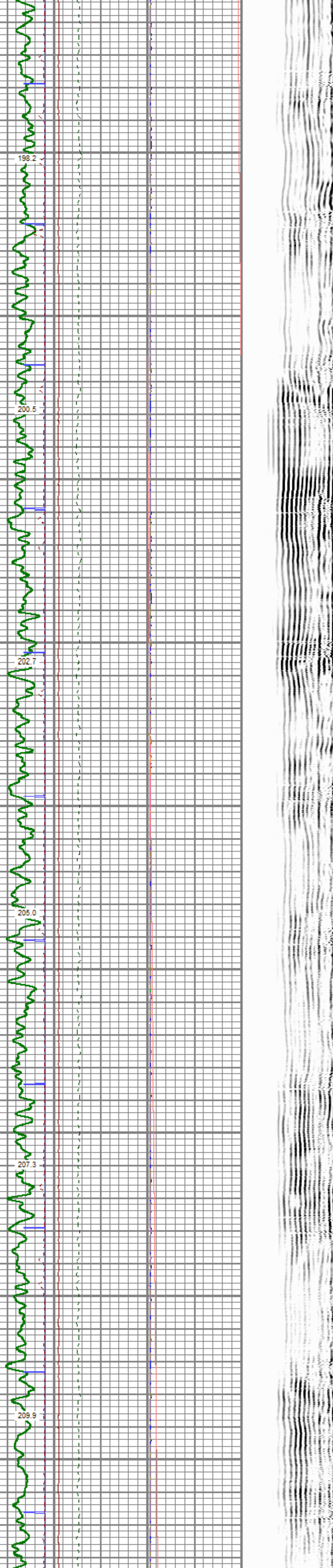
6150

207.3

6200

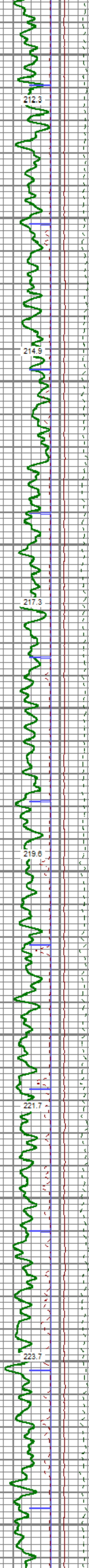
209.9

6250





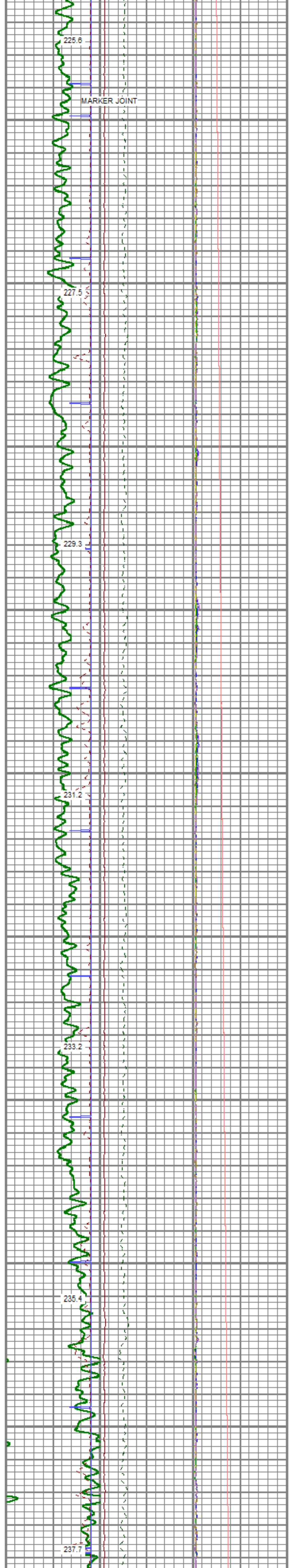
6300  
6350  
6400  
6450  
6500  
6550  
6600  
6650  
6700  
6750



6800  
6850  
6900  
6950  
7000  
7050  
7100  
7150  
7200

225.6  
227.5  
229.3  
231.2  
233.2  
235.4  
237.7

MARKER JOINT



1. The drawing is a cross-section of a road or embankment. The green line represents the ground surface, the red dashed line represents the proposed or existing grade, and the blue line represents the centerline or boundary. The drawing is set on a grid with horizontal and vertical axes. The vertical axis is labeled with elevations from 6800 to 7200. The horizontal axis is labeled with stationing from 225.6 to 237.7. A 'MARKER JOINT' is indicated at station 225.6. The profile line shows a series of peaks and valleys, while the red dashed line is a straight line. The blue line is a straight line that follows the general trend of the profile line.



